

# *When it snows, we respond!*

## Overhauling the City's Snow Plan

October 2017



# Informed Plan: Snow Survey

- April 2017 - Over 1,600 responses
- Citizen Feedback Based Recommendations -

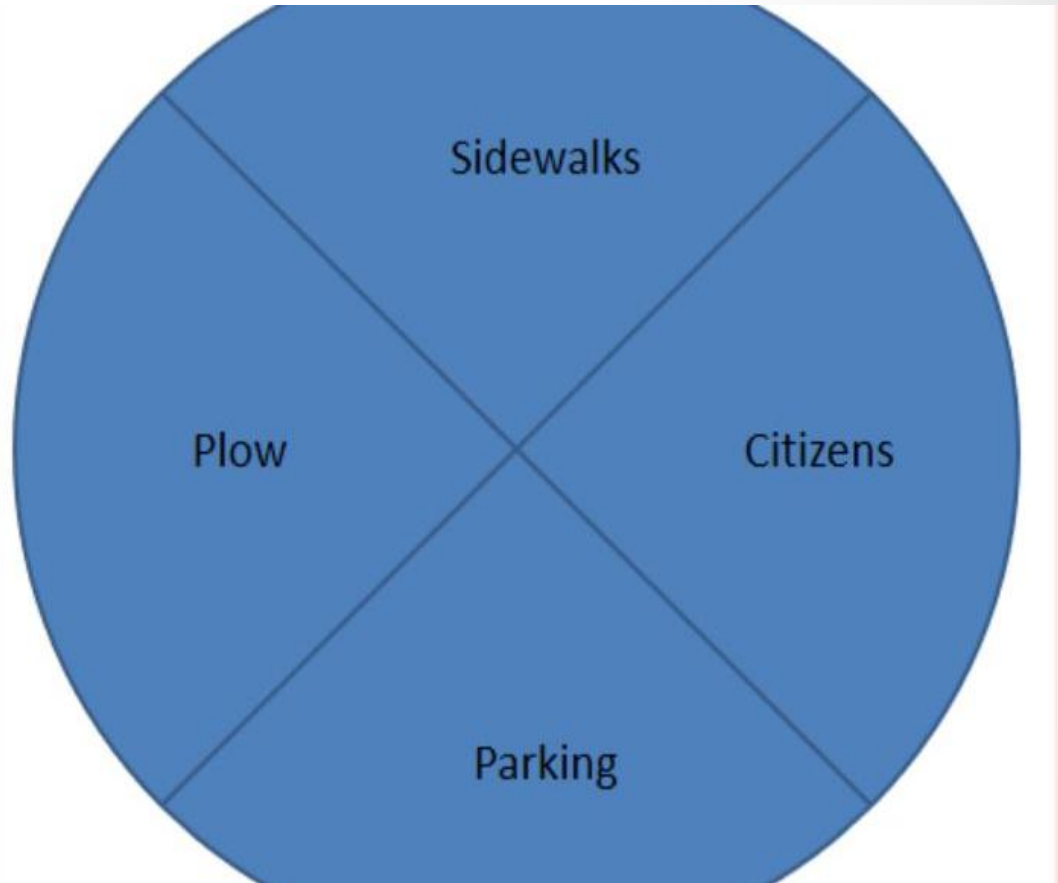
- 1) Complete *full-city plow* more *quickly*, starting at lower threshold
- 2) *Clearer communication* of expectations spread through *more channels* (e.g., social media, calling etc.)
- 3) Snow to be moved *away from driveways* and *sidewalks*
- 4) *Priority* given to *school routes* (buses and walking), *STA stops and routes*, and *medical facilities*

This presentation will cover changes to the plow, parking, and sidewalks for 2017-2018 snow season



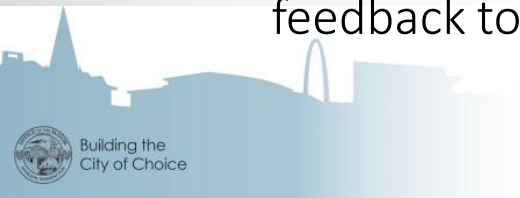
# Interrelated Components & A Holistic Approach

- Each of these components plays a vital role in our snow season
- There's a domino effect when any part of the plan is missing



# What's Different & New

- **Snow Season – November 15 to March 15**
  - Moving away from **event-based** and reactive approach to **proactive plan** for the season
- **Coordinated System**
  - Street Plowing
  - Sidewalk Snow Removal
  - Parking
- **Accountability and Collaboration**
  - Plowing changes will minimize impact to parking and sidewalks
  - City will maintain its sidewalks
  - Help others connect with resources and plan ahead
  - Help out by doing your part for parking and sidewalk snow removal
- **Phased Plan**
  - First phase of changes to the overall plan, future opportunities for feedback to adapt the program as need or inform future seasons





# Plowing

- When it snows, even if it's an inch or two, **crews will plow all the streets**, including residential streets.
  - As part of the regular work day, Monday through Friday, crews will clear snow throughout the City when there are small amounts of snow
  - Utility crews will supplement Street crews sooner.
  - More equipment will be available on a regular basis for plowing.
- When a **full-City plow** is needed, the City still will move to 24/7 operations
  - A full City plow should take about 3 days under the changed plan.



# Driveway Berms

- **New Equipment**

- Pilot program to test “gates” to keep snow out of driveways
- 7 gates to be deployed
- 4 will be used on new front-end loaders that will allow for more precise plowing
- 3 will be used on graders

- **Plowing Technique Changes**

- Plowing away from the curb to help keep snow out of driveways and off sidewalks.
- Snow also may be pushed to center medians on some arterials



# Parking Changes

- **Seasonal Parking (Nov. 15-March 15)**

- Parking on the odd side of the street, all season long with no ticketing or towing
  - RVs & Boats: Seasonal Restriction of parking on the street, tow away
    - Enforcement is pro-active & complaint based with an emphasized campaign before snow season & warnings
    - By Nov. 15, this enforcement will switch to towing
  - All areas outside the downtown will be treated the same
- Downtown: No on-street parking, Midnight-6 a.m. when snow present, tow away area
  - Options for off-street parking (next slide)

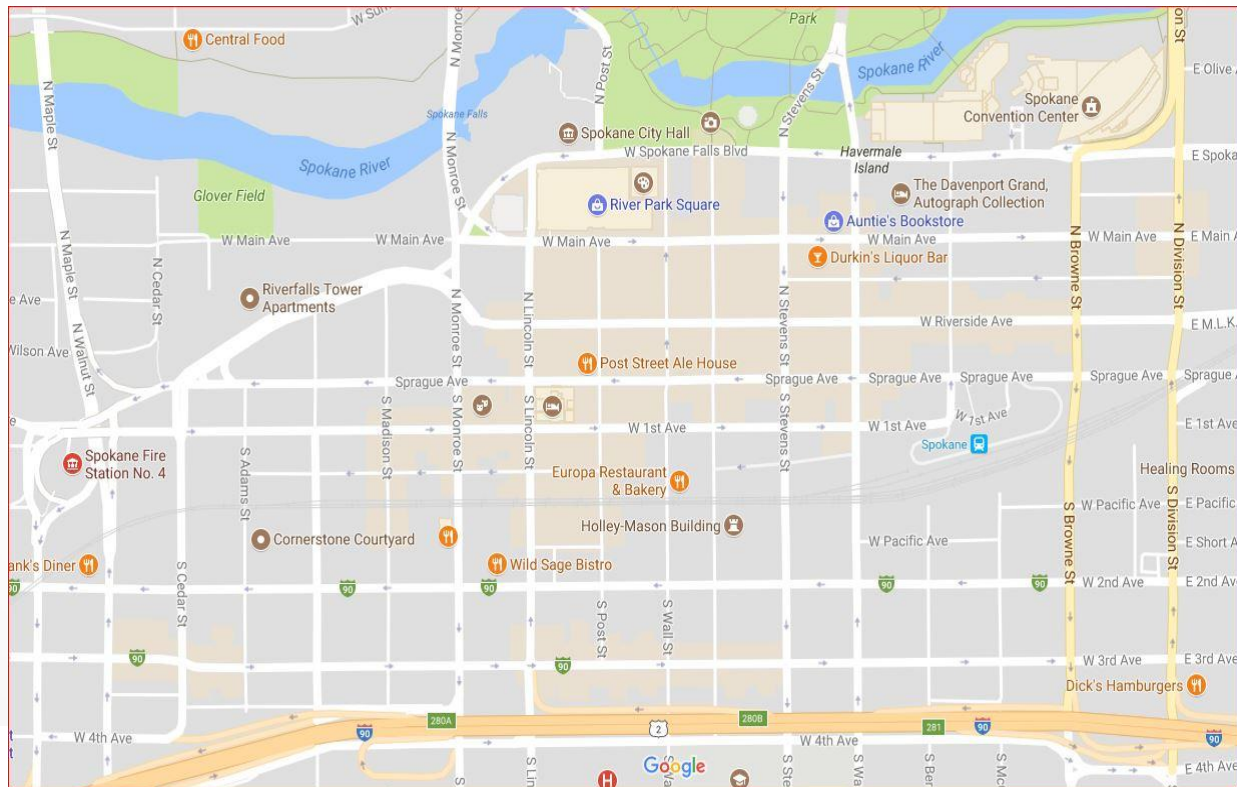


- **Messaging encouraging cooperation & providing options for parking**



# Downtown

- Mitigate Impacts
  - City offers parking areas within the downtown boundary for where residents can stow their vehicles in a manner that abides signage (most likely North and South of the core)
- Downtown boundary
  - Maple to Division; Spokane River to I-90





# Sidewalks Changes

- **Education Emphasis**

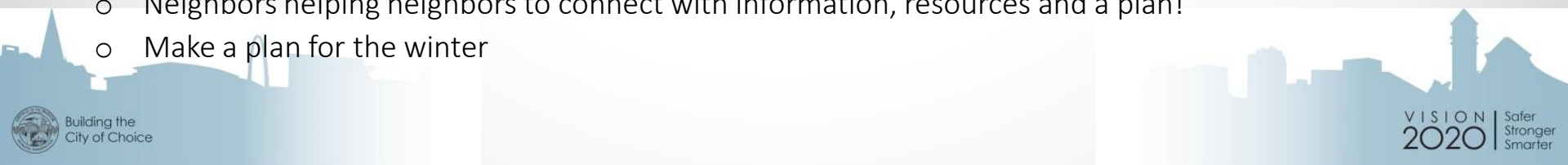
- Survey Results **Prioritized Areas**: schools, bus stops, hospital districts
- Community Partners: Emphasized **students and families walking in the streets** due to unclear sidewalks
- Courtesy Notice: Continue to **issue notice to property owners & residents** when City is notified of unclear sidewalk and pathways

- **Under Discussion**

- Amend SMC 12.01 Improvement, Maintenance of Public Ways:
  - Clarifies the **minimum walking area of 36" pedestrian pathway**, including areas that may have missing sidewalk in an effort to make all right of ways passable for all citizens
  - Clarifies the time snow is to be removed is by **9 a.m. the following day (property maintenance)**
  - Provides for City **removal of snow for priority walking routes & for blocking of the Public Right of Way**
  - Provides for notice similar to other snow actions by media announcement
  - Authorizes removal of snow and the cost for this to be put on the property's Utility Bill
- Removal vs Tickets: Propose snow removal due to survey feedback and ticketing does not guarantee snow removal

- **Mitigation Impacts**

- Pre-registration Options for Elderly and Disabled (Community Minded Enterprises and Catholic Charities)
- Early Season Education: Spokane Public Schools, STA, hospitals collaborating with the City on planning and disseminating information to their constituents
- Neighbors helping neighbors to connect with information, resources and a plan!
- Make a plan for the winter



# How Can We Collaborate?

- **Odd side Parking**
  - Helps the plow **minimize berms** and get to each **neighborhood** faster
- **Removing RVs (trailers, campers, flatbeds, boats, basketball hoops, etc.)**
  - Remove RV's from the right-of-way during the snow season (**Nov. 15-March 15**)
  - Allows plows to maneuver with **greater speed** and thoroughness
- **Connect Resources**
  - Get to know your neighbors! Pass along Community Minded Enterprise's information to those that are over 60 and/or over 18 and disabled, **pre-registration available**
  - Did you know that people can pre-register with private landscaping companies?
  - Neighbors helping neighbors!
- **Seasonal Approach, Phased In**
  - These changes to the plowing, parking and sidewalks are part of phasing in to make Spokane a more seasonal city
  - Thank you for your collaboration, and please feel free to submit a comment card so we can hear from you!



# Questions?

