



Parking @ Perry

Spokane Matters 2.0



Public Engagement Plan

Project Title	Analysis of Parking Inventory and Issues in the Perry District
Project Managers	Nicholas Hamad & Shauna Harshman
Date Prepared	4/17/2018

Project Purpose or Justification

The Perry neighborhood has experienced growing pains associated with the success of their neighborhood serving business district. Parking has repeatedly come up as a topic of concern for residents, who experience blocked driveways, and lack of on street parking in front of their homes. Through a diverse public engagement process that is inclusive of residents, business owners, community organizations and interested parties, this project will analyze parking in the business district and adjacent neighborhood. An issues and solutions workshop should provide an action plan created by the community to address needed improvements.

Project Scope

The project will seek to understand the current parking needs and expectations of those who live, work, and play in the Perry District; and based on that understanding work with the community to create an action plan to address issues.

Project Roles and Responsibilities

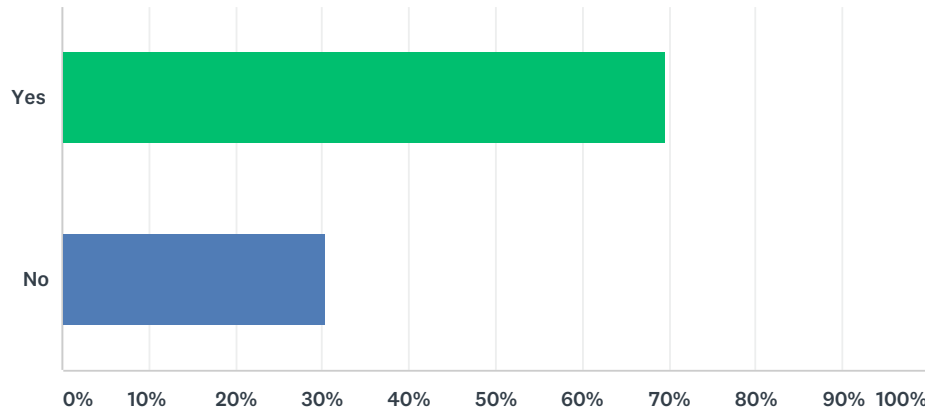
Role	Responsibility
Project Manager	The Project Manager is responsible for initiating, planning, executing, monitoring/controlling, and closing the project by taking corrective action if necessary to ensure that the project is successfully completed on time, within scope, and on budget. The Project Manager assigns and oversees the deliverables provided by team members.
Project Team Member	Executes tasks and produces deliverables as outlined in the project plan and directed by the Project Manager, at whatever level of effort or participation has been defined for them in the project plan.
Project Stakeholder	A person who has an interest in this project.

Stakeholders:

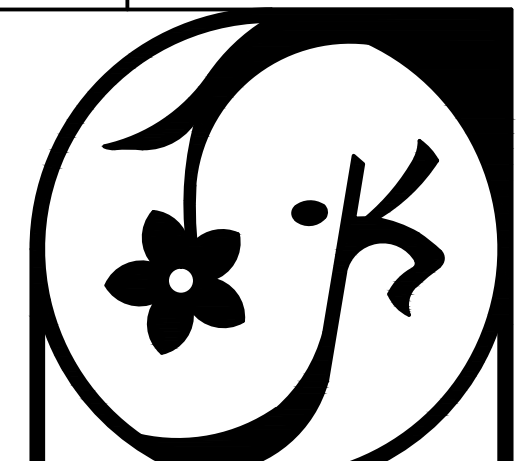
Name	Project Role	Contact	Affiliation
Nicholas Hamad	Project Manager	nhamad@spokanecity.org	City of Spokane - Parks
Shauna Harshman	Project Manager	sharshman@spokanecity.org	City of Spokane - Planning
CM Beggs	Team Member	bbeggs@spokanecity.org	City of Spokane City Council – District 2

Q1 Do you feel there is an additional public parking need for the Perry Business District/Grant Park area?

Answered: 188 Skipped: 0



ANSWER CHOICES	RESPONSES	
Yes	69.68%	131
No	30.32%	57
TOTAL		188



CITY OF
SPOKANE
PARKS
& RECREATION

GRANT PARK
PARKING STUDY

PARKING CONCEPT 1

BAR IS ONE INCH ON ORIGINAL
DRAWING. IF NOT ONE INCH ON
THIS SHEET, ADJUST SCALES
ACCORDINGLY

DATE: 2017.01.17

DRAWN BY: NAH

CHECKED BY: NAH

PROJECT NO: 201702

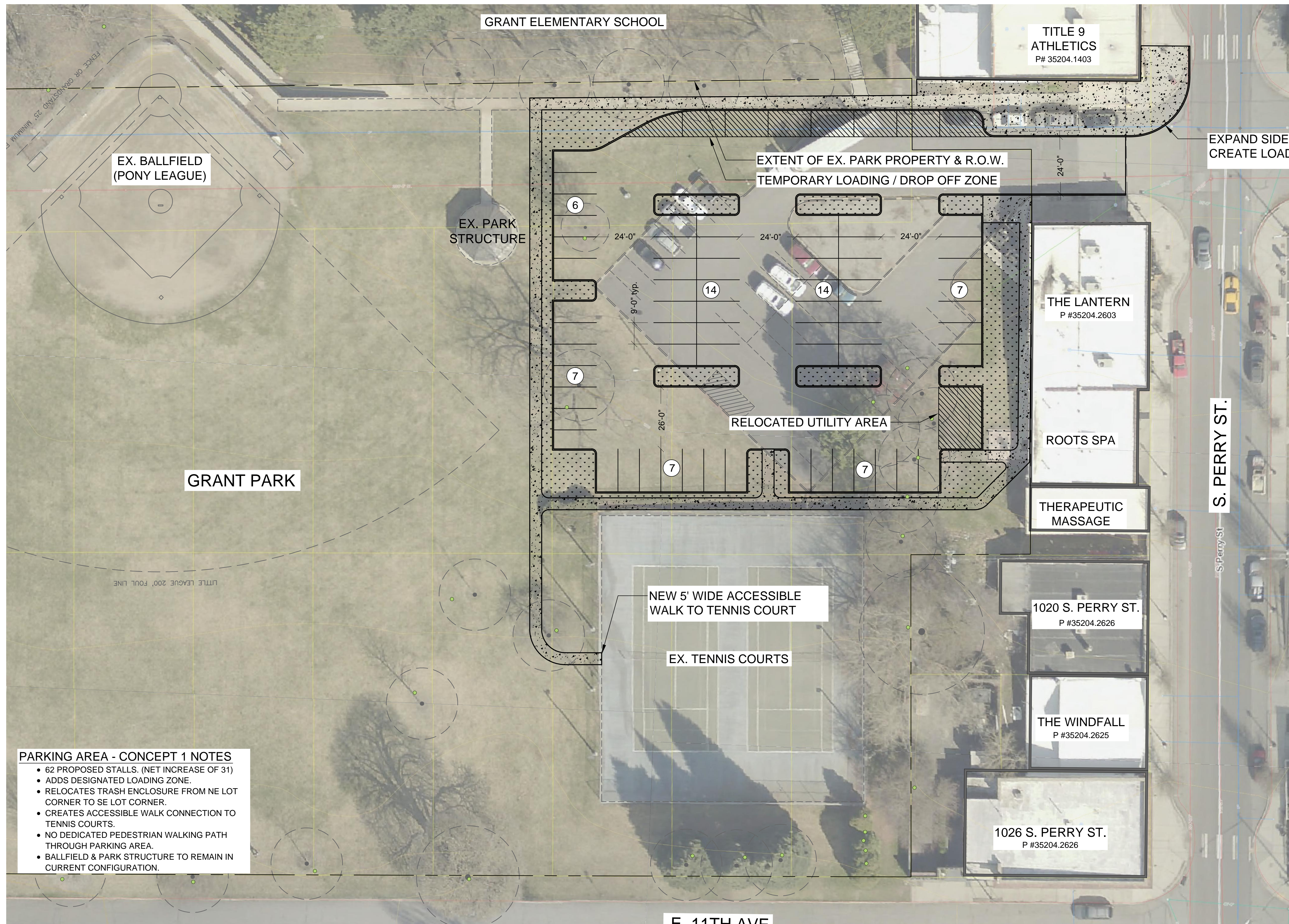
REVISION

1	3
2	4

SHEET 2 OF 3

L1.1

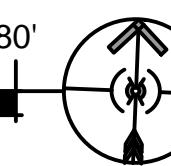
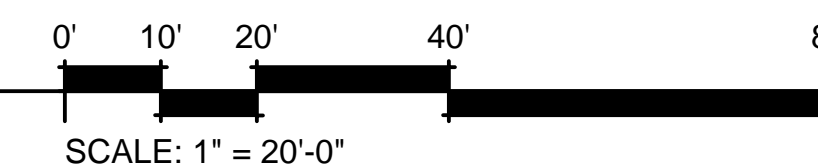
PARKING CONCEPT 1





PARKING AREA - CONCEPT 1 NOTES


- 62 PROPOSED STALLS. (NET INCREASE OF 31)
- ADDS DESIGNATED LOADING ZONE.
- RELOCATES TRASH ENCLOSURE FROM NE LOT CORNER TO SE LOT CORNER.
- CREATES ACCESSIBLE WALK CONNECTION TO TENNIS COURTS.
- NO DEDICATED PEDESTRIAN WALKING PATH THROUGH PARKING AREA.
- BALLFIELD & PARK STRUCTURE TO REMAIN IN CURRENT CONFIGURATION.

PROPOSED GRANT PARK PARKING AREA - CONCEPT 1

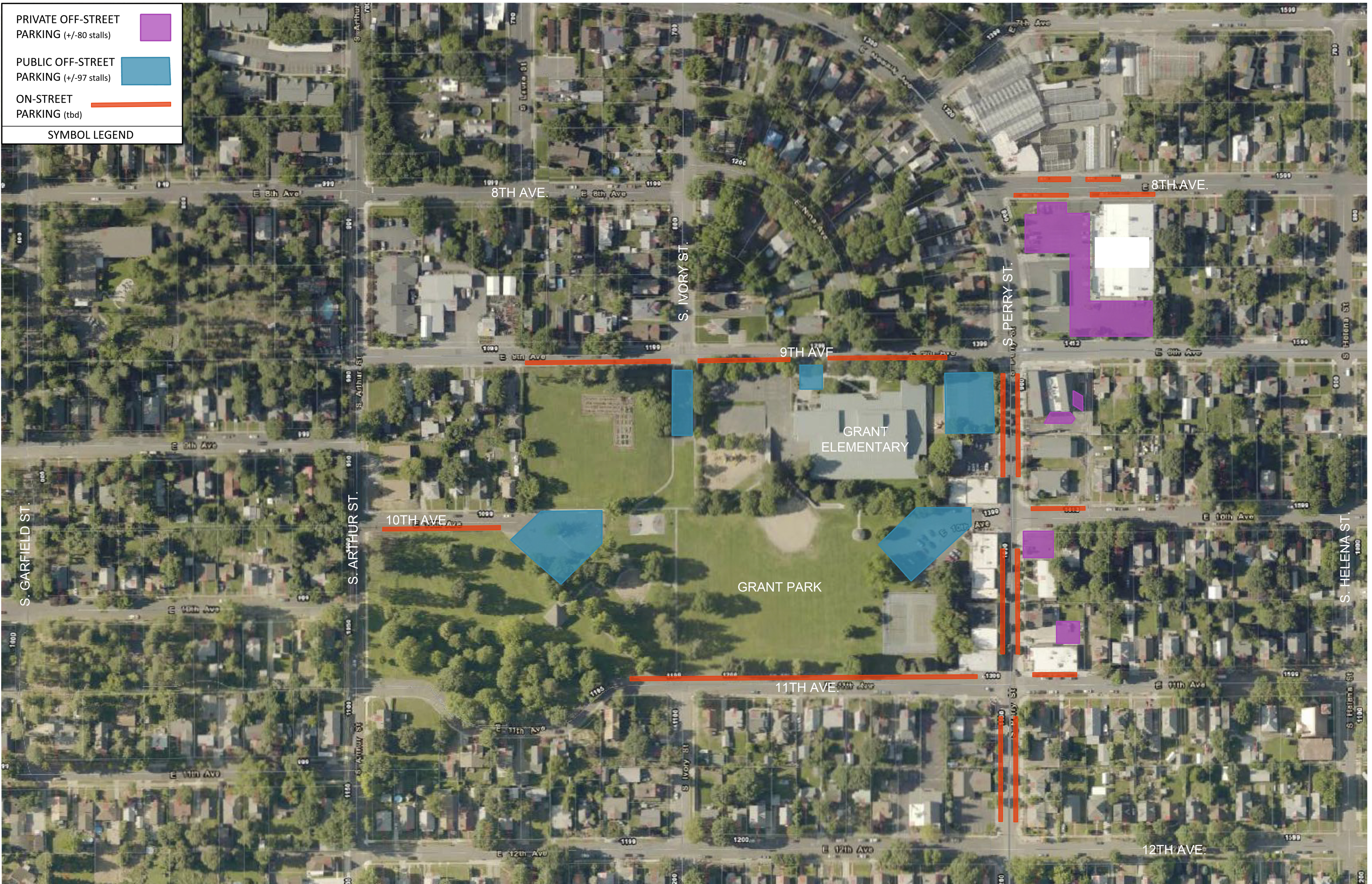


PRIVATE OFF-STREET
PARKING (+/-80 stalls) 

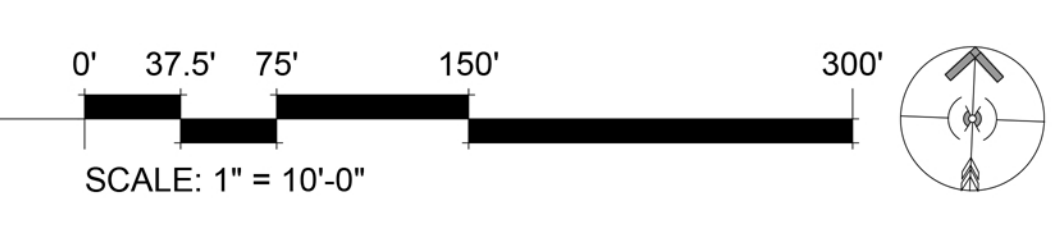
PUBLIC OFF-STREET
PARKING (+/-97 stalls) 

ON-STREET
PARKING (tbd) 

SYMBOL LEGEND



 EXISTING PERRY DISTRICT PARKING



Perry Parking Study

Messages and Shared Concerns

Main Message: The Perry neighborhood has experienced growing pains associated with the success of their neighborhood serving business district. Parking has repeatedly come up as a topic of concern for residents, who experience blocked driveways, and lack of on street parking in front of their homes. Through a diverse public engagement process that is inclusive of residents, business owners, community organizations and interested parties, this project will analyze parking in the business district and adjacent neighborhood. An issues and solutions workshop should provide an action plan created by the community to address needed improvements.

- The project will seek to understand the current parking needs and expectations of those who live, work, play, and worship in the Perry District; and based on that understanding work with the community to create an action plan to address identified issues.
- The engagement phase of the project will take place during the summer of 2018 and seek answers to the following questions:
 - How do you get there? Walk, bike, bus, drive, other
 - What are you doing? Dining, entertainment, shopping, working, worshipping, services, classes, other
 - Where do you Park in Perry? Map of parking areas – people will identify with dots based on how they are associated with the district (resident, business owner, working, worshipping, visitor)

Next Steps - Strategies and Timeline

	May				June				July					August			
Week of Sunday:	7	14	21	28	4	11	18	25	2	9	16	23	30	6	13	20	27
• CC Urban Exp. Committee briefing																	
• June Survey and pop-up at SPBNA meeting						12											
• June Survey and pop-up at SPBA group meeting						13											
• June Survey and pop-up at TEAM Grant Meeting																	
• Perry Street Fair (parking board and survey)											21						30
• August Thursday Market pop-ups (parking board and survey)												2	9	16	23	30	
• September – Solutions with SPBNA																	
• September – Solutions with SPBA																	
• September – Solutions with TEAM Grant																	
• October – Report creation																	
• November - Report out to Spokane Matters and neigh.																	
• Blog posts/social media/Email lists: Neighb. Councils, industry orgs., agencies, community orgs., City boards and commissions (ongoing)																	

BUILD

SETTINGS

PUBLISH

2 in Spokane Matters 2.0.

1 Question

NEXT →

When you come to the Perry District, how do you get here?

Walk

Bus

Bike

Drive

Other

← PREVIOUS

NEXT →

When do you visit the Perry District?

0 Question

← PREVIOUS

NEXT →

EDIT THANK YOU PAGE



Parking @ Perry

stay tuned!