



Chapter 2 - Implementation

Planning & Development Services | T: 509.625.6300 | E: shapingspokane@spokanecity.org | Web:



A New Chapter for Shaping Spokane

In order to provide a “living” connection between the Comprehensive Plan goals and policies and the everyday work of the City to improve the health, safety, and welfare of its citizens, Shaping Spokane introduces a new chapter to the Comprehensive Plan - Implementation.

Purpose

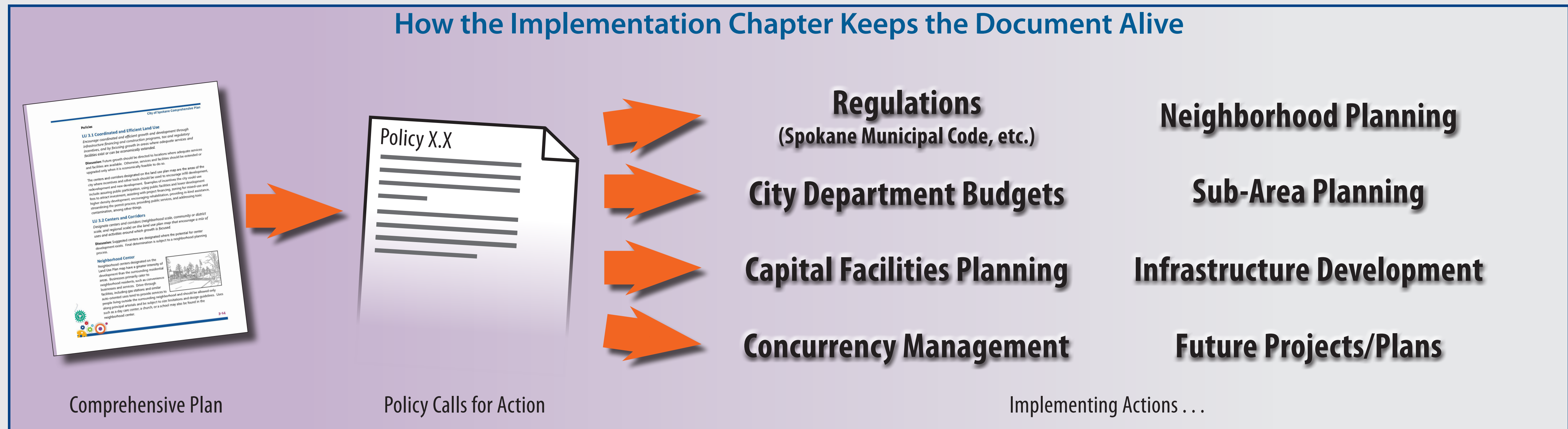
The purpose of the Implementation chapter is to:

- Provide a generalized list of programs and actions that can be helpful in accomplishing the goals and policies of the Comprehensive Plan.
- Identify goals or policies that call for direct, measurable, and/or terminable action.
- Identify corresponding actions, plans, or projects that directly implement those policies, either in the past or in the future.

How is this chapter different from the other chapters?

Unlike the other chapters in the Comprehensive Plan, Chapter 2 does not propose any new policies. Rather, it discusses many of the goals and policies of the other chapters and provides a detailed matrix for each, showing where the City has begun or completed work and also where work is still needed.

The Chapter is both a snapshot of how the City has implemented the Comprehensive Plan and how it will continue to do so in the future.



Join the Conversation - Lend Your Hand to the Implementation Chapter

CHAPTER 3 - LAND USE								
Action Item	Initiating Policy	Policy Text	Supporting Policies	Past Actions	Map ID#	Future Projects (Project Docket)	Requestor/Initiator for Future Action	Lead Agency
LU1	LU 1.7	<u>Neighborhood Mini-Centers</u> Create a neighborhood mini-center wherever an existing neighborhood retail area is larger than two acres.	LU 1.6, LU 3.1	Spokane Municipal Code	-	Study Possible Expansion of Mini-Center use in Land Use	Staff	City
LU2	LU 1.8	<u>General Commercial Uses</u> Contain general commercial areas within the boundaries occupied by existing business designations and within the boundaries of designated centers and corridors.	LU 3.1	Land Use Map (Map LU-1); Spokane Municipal Code	-	Study Possible Expansion of Neighborhood Retail	City Council Neighborhood Input	City
LU3	LU 1.9	<u>Downtown</u> Develop city wide plans and strategies that are designed to ensure a viable, economically strong downtown area.	LU 2.2, LU 3.1	Fast Forward Spokane - Downtown Plan	-	Update Downtown Plan (Possible Increased Residential Focus)	Staff	City



This is your opportunity to help drive the future of the Comprehensive Plan. Many small changes have been made to the Comprehensive Plan in coordination with several citizen groups and other public participants over the past three years of work. Even with all that work, we’re not done!

The Implementation chapter provides a unique opportunity for you to give input into the future work of the City. Please take a look at the draft matrices on this table. Where you see an opportunity for future projects or changes, please let us know by writing down your ideas on the paper provided!

LU3	LU 1.9	<u>Downtown</u> Develop city wide plans and strategies that are designed to ensure a viable, economically strong downtown area.	LU 2.2, LU 3.1	Fast Forward Spokane - Downtown Plan; University District	-	Update Downtown Plan (Possible Increased Residential Focus)	Staff	City
LU4	LU 3.2	<u>Centers and Corridors</u> Designate centers and corridors (neighborhood scale, community or district scale, and regional	LU 1.2, LU 1.3, LU 1.4, LU 1.5, LU 1.6, LU 3.1, LU 4.2, LU 4.4	Land Use Map (Map LU-1); Spokane Municipal Code	LU1 LU2	SubArea Planning for West Hills Neighborhood Center Lincoln Heights District Center Master Plan - Implementation Planning	Neighborhood Planning Neighborhood Planning Process	City City

