



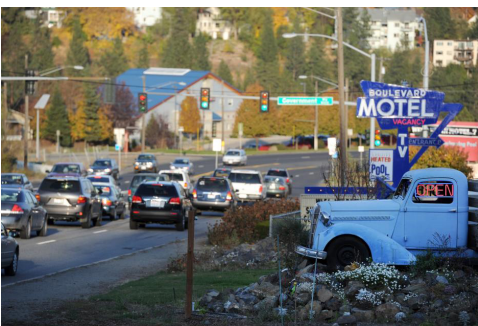
## West Hills - Days of Yore

The Spokane Tribe camped near Garden Springs Creek for its water source and close proximity to Spokane Falls. In the 1880s, Chinese gardeners used the land along the length of Garden Springs Creek for planting vegetables.

The Indian Canyon area was also used by Native Americans; Chief Spokane Garry died there in 1892. Well into the twentieth century, people would go there to see the teepees and camps.



The Fort George Wright army post was constructed in 1897. Eventually streetcars travelled along Government Way to Fort George Wright, and along Sunset to the end of what is now Finch Arboretum. In their 1913 Report of the Board of Park Commissioners, the Olmsted brothers noted Fort George Wright's reputation as "the most beautiful army post in the west." The report also called Indian Canyon Park "the most naturally picturesque park" in Spokane's system.



Whittier School originally opened in 1891 at 9th Avenue and "A" Street to serve the neighborhood. Then in 1913, a new Whittier School was constructed at 7th Avenue and "E" Street. The new building was considered one of the most beautiful in Spokane, built on a high bluff overlooking the city and in direct view of anyone leaving the city going west over the Latah Bridge on Sunset Highway. Children of the military commissioned officers at Fort Wright attended Whittier along with other neighborhood children.

Also in 1913, part of the land for the future Finch Arboretum was purchased from Daniel D. Dwight and John A. Finch including the Garden Springs Park. The Latah Creek Bridge was also completed that same year. The bridge was built in order to reach the dry-land wheat farming areas in neighboring counties and promote commerce and development.



Commissioned in 1926, U.S. 10 (Sunset Highway-Sprague Avenue) was one of the first major highways to cross the northwestern states. The majority of people and products coming in and out of Spokane used the highway or the railroad. Commercial development followed, with motels and diners serving the motoring public. In addition, the highway was convenient to a tourist destination campground in High Bridge Park that operated from the early 1920s until the 1950s. The park hosted various uses over the years including federal public housing for military families and veterans during World War II.

In 1935, Indian Canyon Golf Course was opened for play, and in 1947, plans for Finch Arboretum began to take form when Finch trust funds were given to the park.



In 1960, a portion of Fort Wright's former grounds were taken over by the Sisters of the Holy Name convent, who established Fort Wright College. After Fort Wright was closed by the military, attendance at Whittier School plummeted and it closed in 1972. U.S. 10 was decommissioned as the major route from Seattle to Spokane in 1969, but the High Bridge campsite experienced a brief revival during Expo '74. In 1981, Whittier School was demolished and new homes have been built in its place.

## Life in West Hills - Today



The West Hills Neighborhood is an established place with a friendly atmosphere that has attracted a variety of residents. A diverse group of professionals, artists, families and retirees call West Hills home. The neighborhood has several natural features including river access, bluffs, basalt rocks, and wildlife which have attracted outdoor recreation enthusiasts. Neighbors enjoy visiting parks, walking, biking and visiting the Spokane River. A strong sense of community precipitates neighborhood events such as block parties, yard sales, clean-up activities, and picnics. The low cost of living combined with pleasant aesthetics such as tree-lined streets add to the stability and safety of the neighborhood.

## West Hills - Treasures

- Finch Arboretum – gorgeous historic park and arboretum with a variety of trees and shrubs, perfect for picnicking, walking, and exploring.
- Fish Lake Trail – Beautiful, clean, and well maintained trail perfect for running and biking
- The Boulevard Motel – Local motel that is well maintained. Owners plant a garden every year around the motel premises.
- People's Park – Sandy beach at the confluence of Latah creek and the Spokane River.
- Riverside State Park – Gorgeous views, varied terrain with something for everyone



## West Hills - Natural & Built Identity

The West Hills neighborhood enjoys a variety of natural features that make it unique. Residents love access to the Spokane River and enjoy walking, biking, and hiking the Centennial trail. The neighborhood can be described as "outdoorsy," with basalt rock, hilly terrain, bluffs, rock outcrops, and wildlife in proximity to residential development. The neighborhood embodies Spokane's motto of "near nature, near perfect."

## West Hills - Annual Events or Activities

- Block parties
- Easter egg hunts
- Spring and fall picnics



# West Hills Neighborhood

