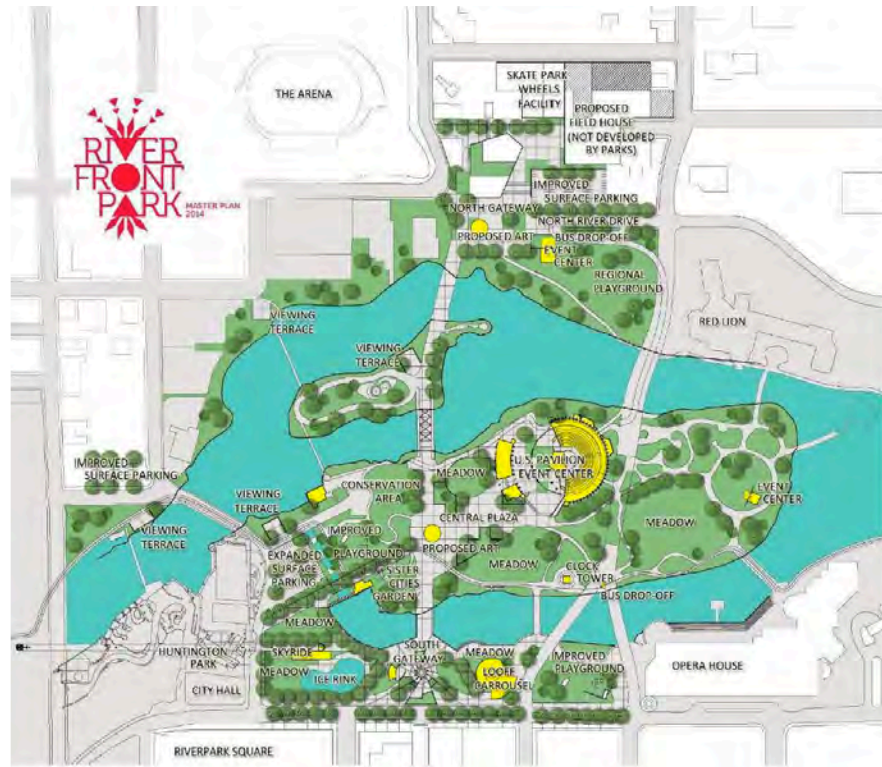




Redevelopment Update Winter 2020

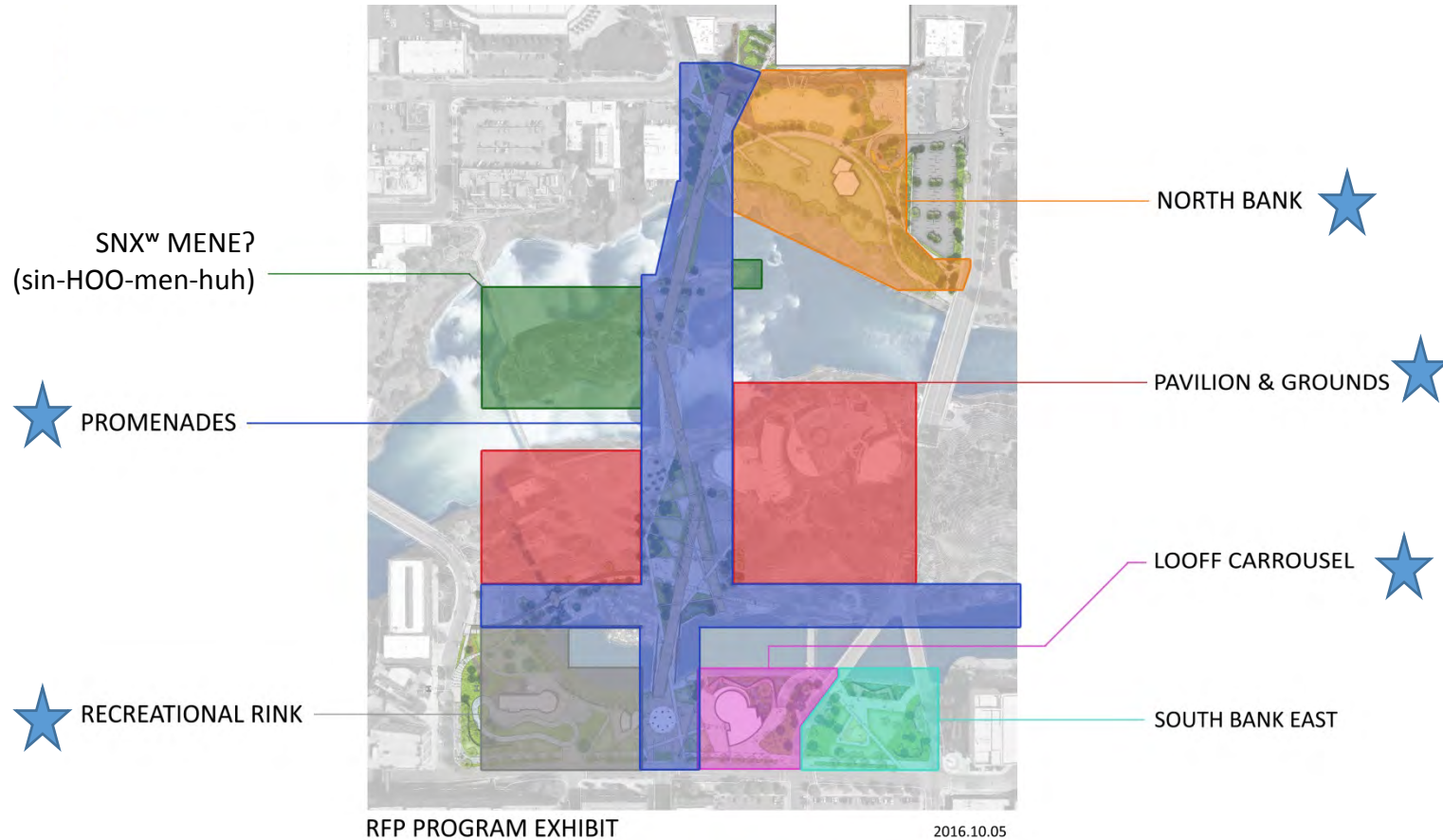
Garrett Jones, Director, Parks & Recreation
Berry Ellison, Program Manager
Jo-Lynn Brown, Program Coordinator

Building on the Master Plan



Voters approved a \$64 million bond for redevelopment that didn't raise taxes

Overview

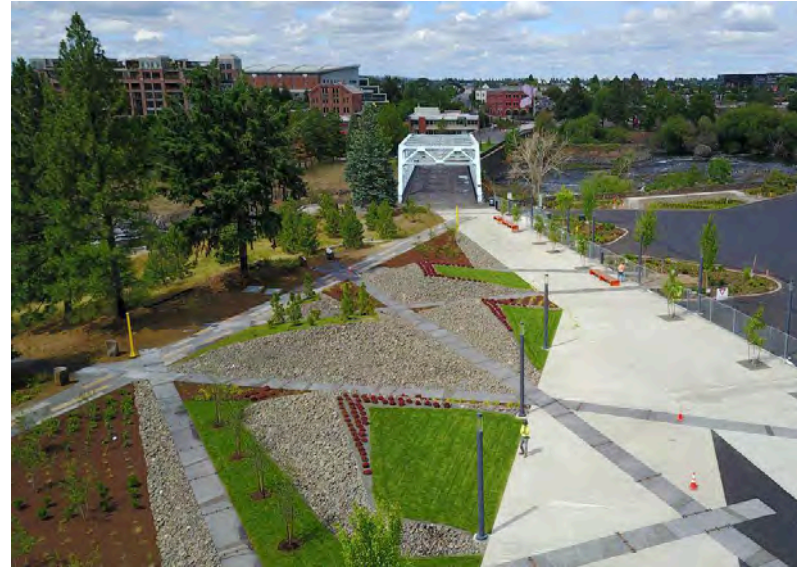


★ The 5 bond projects

Looff Carousel & Numerica Skate Ribbon *Completed*



Howard Street Promenade *Completed*



Pavilion Grand Opening

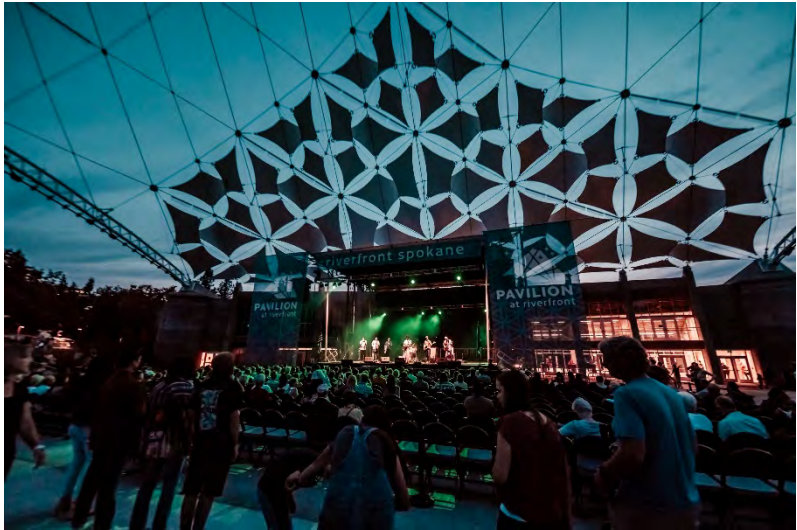


Pavilion During Construction



From Concept to Reality





North Bank Playground



Ice Age-themed playground with water feature, wheels park, and basketball court funded by Hooptown USA.
Spring 2021

West Havermale Island



Features an inclusive playground funded through a donation from Providence Health Care. Also, a restored Theme Stream from Expo '74, connectivity to the Centennial Trail, and a maintenance/operation yard.
Fall 2020



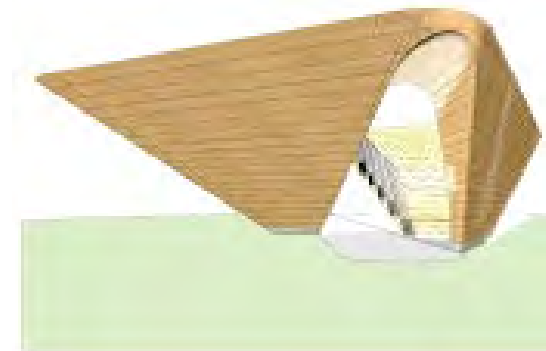
Stepwell art

Joint Art Committee recommended, and Park Board approved, signature art piece Stepwell.

Future site on Havermale Island.

Art Plan for the park also approved.

Fall 2020



Tree protections & removals



The Master Plan was designed to ensure trees of the highest significance and value remained.

We ensure a 2-for-1 replacement policy. The tree work for the Promenade and Pavilion project involved the removal of 128 trees, resulting in the planting of 256 new trees throughout the park system.

Softscape will make up about 65% of the new park. (Previously, it was about 58%.)

A cleaner park



An additional deliverable to the citizens is a cleaner park.

Tons of contaminated soils are being either removed or treated according to EPA regulations. Three EPA Brownfield grants totaling \$600,000 aid this effort.

Riverfront Spokane

Notice: Construction has started in Riverfront Park and may impact some bicycle and pedestrian routes. Before you visit, please see the latest [goodpublics.org](#) for the best routes around redevelopment zones. Some attractions are currently unavailable due to redevelopment.

A Cleaner Park

The redevelopment of Riverfront Park provides us with a fresh opportunity to bring the park up to a higher standard of environmentalism and sustainability befitting the former site of the first ever environmentally themed World's Fair. The journey to a cleaner park starts from the ground up, or in this case, below the ground, where help from EPA grants is allowing us to remove or safely encapsulate hundreds of tons of contaminated soil left from years of industry in the park prior to Expo '74.

EPA Brownfield Cleanup Grants for Riverfront Park Information

EPA has selected the City of Spokane for three brownfields cleanup grants totaling \$600,000. These hazardous substances grant funds will be used to clean up contaminated soils at Havenmale Island, Canada Island, and the North Bank Development Area - three sites in Riverfront Park, 100 acres of land and water in the heart of downtown Spokane and the location of the 1974 World's Fair.

Mayor: "We are growing Spokane's economic vitality one park, one employer, one job at a time," said Spokane Mayor David Condon. "Much of our strategic plan is built on partnerships, reinvestment and creative reuse of important neighborhood and community assets. The working relationship we have with the EPA is bringing that vision to life through the cleanup grants and past assistance in assessments, planning and technical guidance the agency has brought to the table for Spokane to further leverage the investments our citizens are making."

Chris Wright, Park Board: "These three cleanup grants are a great boost in our efforts to revitalize Riverfront Park and the downtown core," said Chris Wright, Park Board president for the City of Spokane. "With these grants we can spend fewer local tax dollars on environmental cleanup and more toward infrastructure and attractions in the new park - like a great food-themed playground."

What is a brownfield?

- A property wherein its expansion, redevelopment, or reuse may be complicated by the presence or potential presence of a hazardous substance, pollutant, or contaminant.
- These often abandoned sites can create safety and health risks to surrounding residents, increase unemployment, and are frequently tax delinquent.
- Brownfields include those sites once used for gas stations, dry cleaners, factories, warehouses, railroad switching yards, landfills, parking lots, etc.
- It is estimated that there are more than 480,000 brownfields in the U.S. and more than 2,000 in Washington.

Is the park safe?

Working budget

Project	Budget
Ice Ribbon and SkyRide Facility	\$ 10,412,530
Looff Carousel	\$ 11,744,616
Howard Street Bridge South (South Promenade)	\$ 0 <i>\$6.65M reimbursement from Utilities for utilities corridor work</i>
Howard Street Promenades	\$ 5,566,400
West Havermale Island*	\$ 2,740,873
U.S. Pavilion	\$22,386,073
snx™ mene? (formerly known as Canada Island)*	\$ 1,741
Regional Playground / North Bank	\$ 9,893,396
Red Wagon Meadow / South Bank East*	\$ 156,847
Program Level Owner Costs	\$ 5,492,815
Non-Bond Funds	\$ 5,689,488
Total	\$74,084,780 <i>Includes total bond amount of \$64.3m plus anticipated interest earned, grants, donations, Utility reimbursements, and other reimbursables.</i>

*Not one of the five promised bond projects.

Timeline

✓ Recreational Ice Ribbon & SkyRide Facility
Completed December 2017

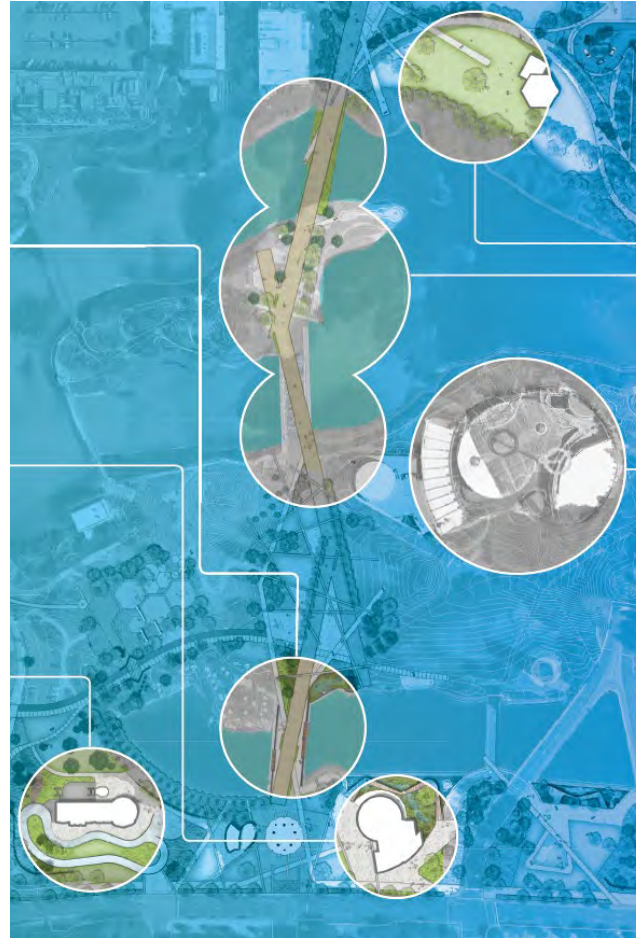
✓ Loeff Carrousel
Completed Spring 2018

✓ Howard Street Promenade
Completed Summer 2019

✓ U.S. Pavilion
Completed Fall 2019

West Havermale Island
Fall 2020

Regional Playground
Spring 2021



RIVERFRONT IS OPEN DURING CONSTRUCTION



riverfront
SPOKANE

Making Your Park Work for You During Construction and Events

- These bicycle and pedestrian detour routes are open for use.
 - Centennial Trail Detour.
- Learn more about the voter-approved renovation of Spokane's treasured downtown park

RIVERFRONTPARKNOW.COM



Construction schedule subject to change as project progresses.

Updated January 10, 2020



Photo: James Richman

Questions / Comments?
Thank you

