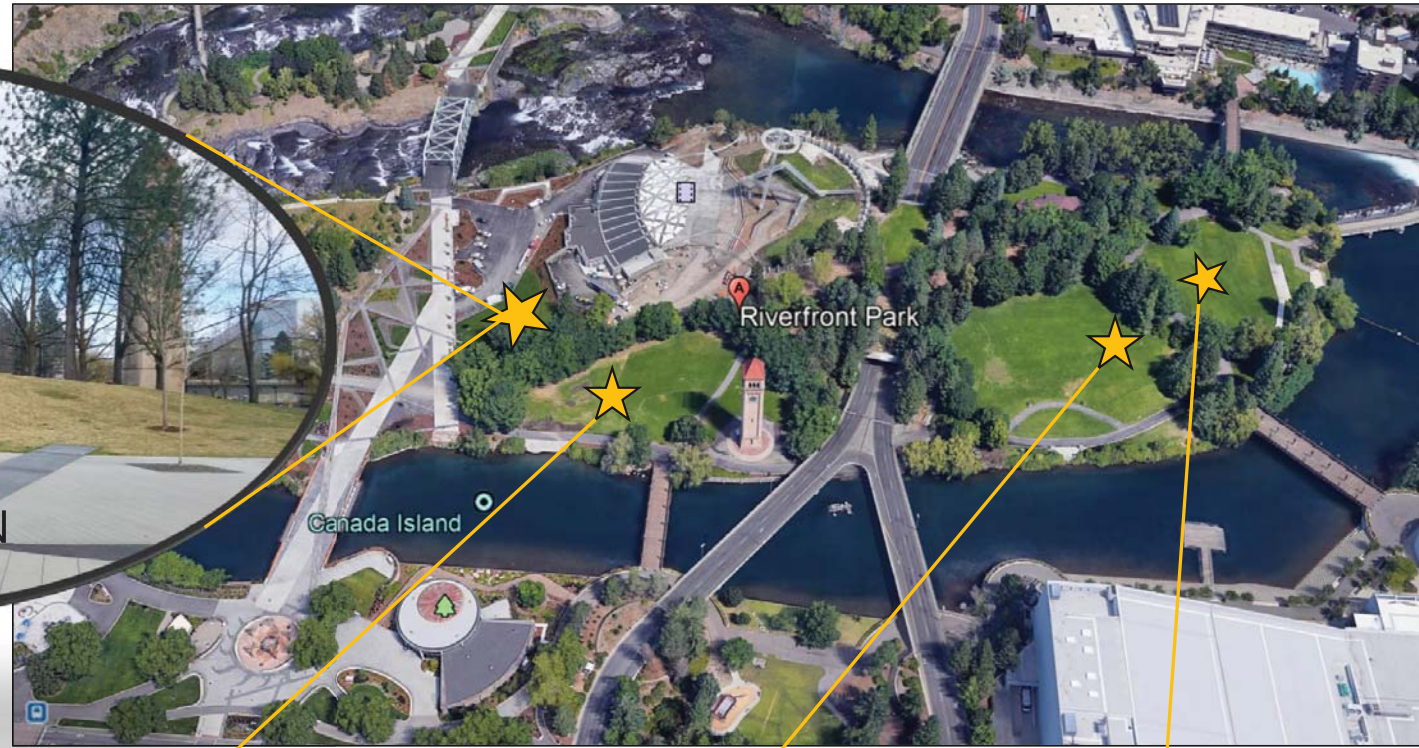


INITIAL SITE CONSIDERATION



CENTRAL GREEN



OTHER POTENTIALS:



Clock Tower Meadow



Lilac Bowl

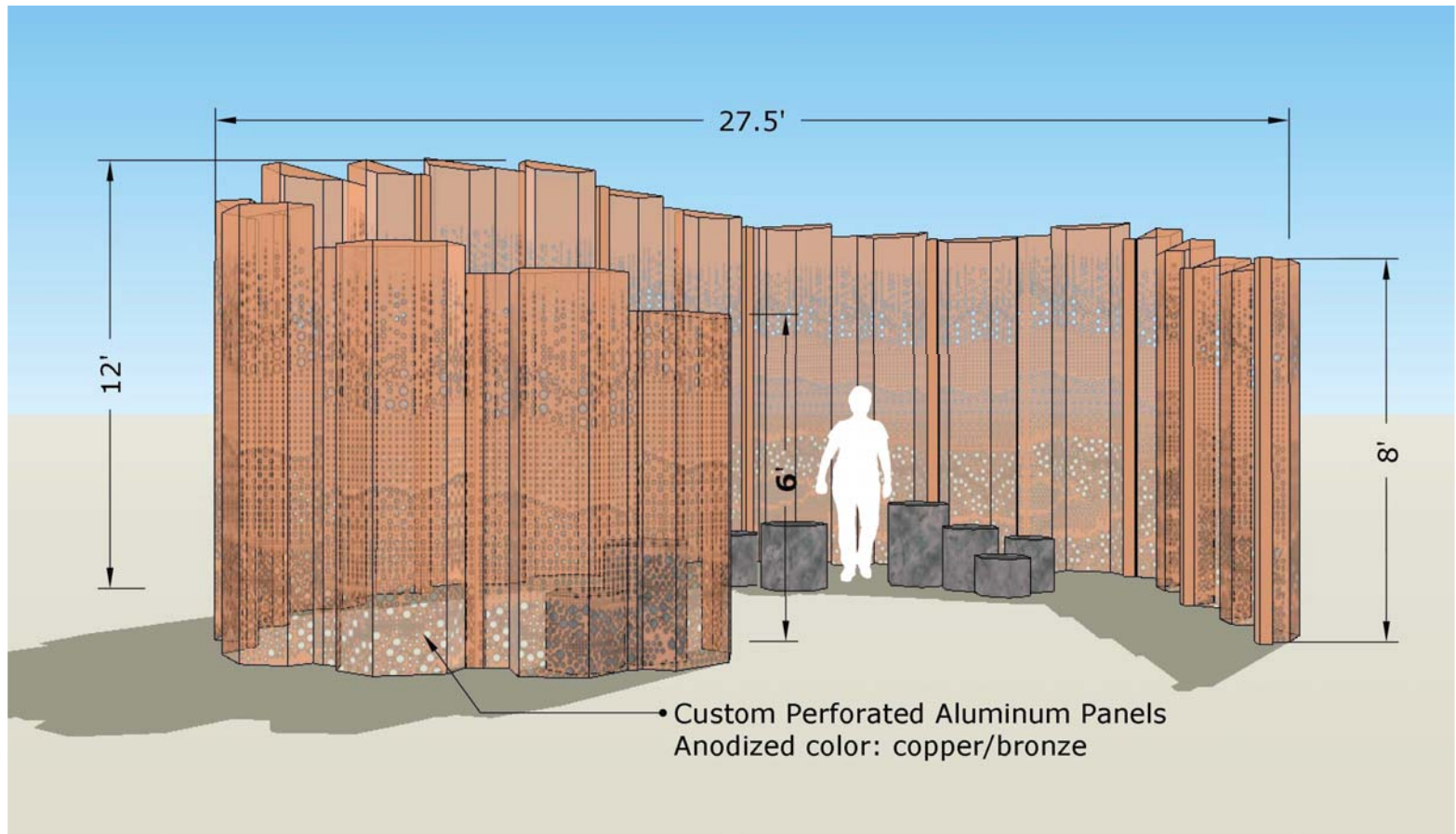


East Havermale

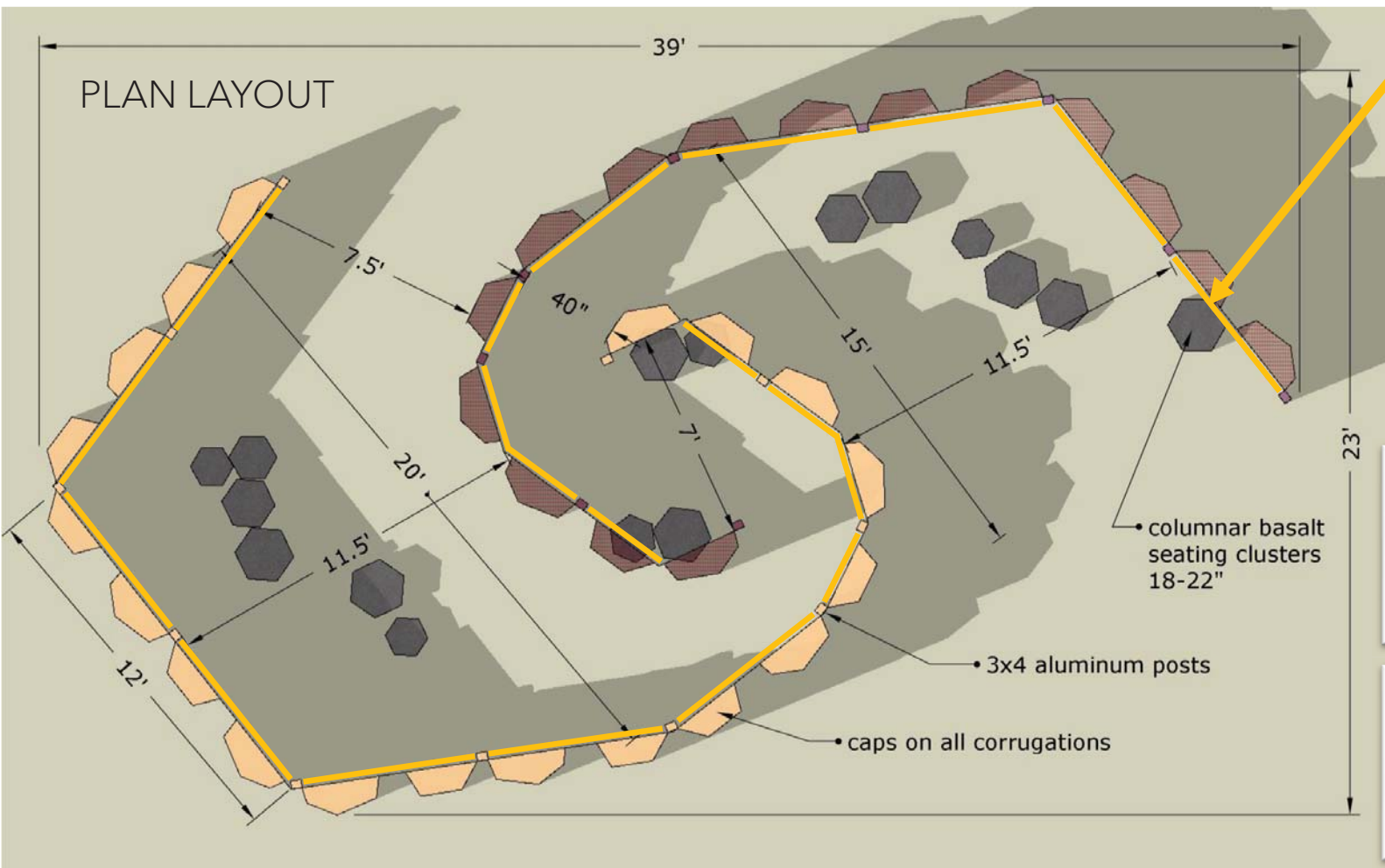
KEY DESIGN ELEMENTS FOR RIVERFRONT PARK

- INTERACTIVE- An inviting artwork that engages visitors to participate in a collaborative experience with art and Nature. Create a space that the public will want to visit often and stay a while.
 - Playful & Inspiring
 - Layered, Colorful & Textural
 - A new experience each time.
 - "Hashtag-able"
- SITE SPECIFIC
 - An artwork that relates to the rich geological history of our region.
 - Gives consideration to the park's design focus and existing artwork.
 - Designed at a scale that will draw visitors in from afar.
- ACCESSIBLE- An artwork that can be enjoyed by all, regardless of age, ability and background.
- FUNCTIONAL- Safe, durable & low maintenance- providing opportunities for rest and shade/protection.
- A BELOVED DESTINATION in Riverfront Park and Spokane for years to come- enjoyed by visitors and residents alike.

SIDE ONE

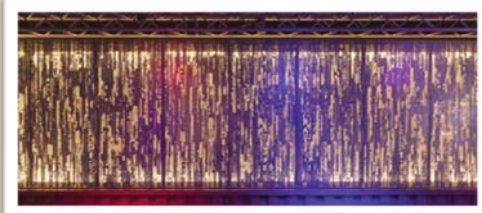


PLAN LAYOUT



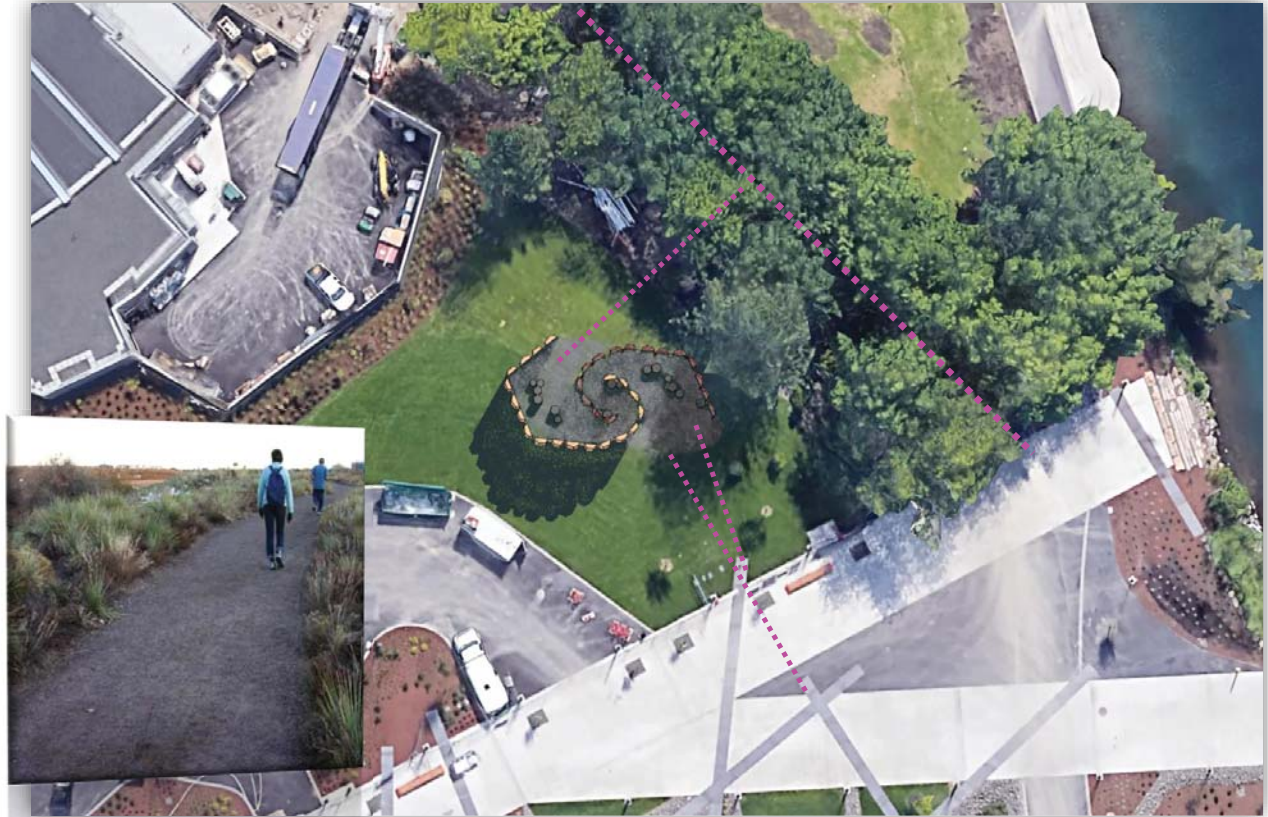
LIGHTING

- LED strip lighting mounted in a channel at top edge of corrugations.
- Casts light downward causing a glow from within.
- Keeps interior well-lit and highly visible at night.



FUNCTIONAL CONSIDERATIONS

- There are **two large entry points** to the interior of the sculpture. All pathways will be ADA compliant in width.
- Compacted crushed basalt is **ADA compliant** and will be a nice material for the interior floor of the sculpture.
- FOOTINGS: Will be required for the posts and will be poured to **engineered** specifications.
- FABRICATION: Custom perforated panels will be ordered, pre-formed and anodized (10 weeks lead time on order.) Final assembly/fabrication will be handled by myself or a fabrication facility in WA. Accurate Perforating & Precision Cutting Technologies have provided me with initial project estimates.



MAINTENANCE: Spray/wipe-on surface protectants are available and provide protection for 12 to 24 months in the harshest environments. They protect the finish & make subsequent maintenance easier. Subsequent maintenance may be reduced to simply flushing the surface with water, permitting it to dry, and wiping on a surface protectant every few years.

NO: Ammonia, Alkaline Cleaners, Lye, Strong Acids, contact with concrete or dissimilar metals

YES: Alcohol, Acetone, Mild Soap/detergent, MEK, organic solvents, aluminum or zinc coated stainless fasteners

