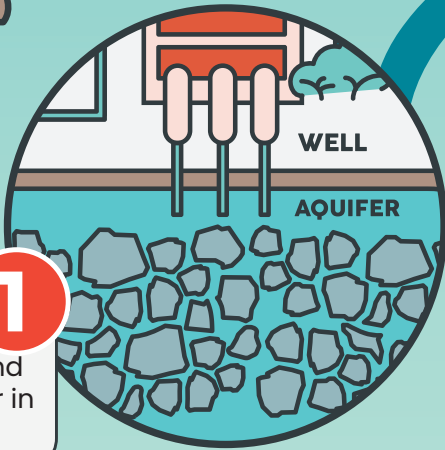


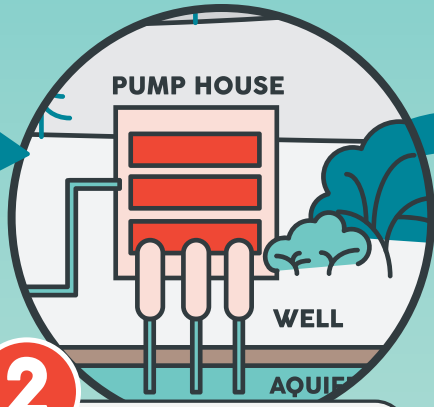
All of the water you drink, bathe in, and wash your hands with comes from the ground right below you! In Spokane, we get our water from an **aquifer** (underground layers of sand, gravel and rock that contain water). Super cool, right? Have you ever wondered how water gets to the sink or bathtub? It may seem like magic but it actually takes a lot of work and a lot of people to make that happen. Follow the steps below and I'll show you how our water works.



1 Deep holes are drilled underground to reach the water in the aquifer.



2 After the well is dug, big pumps are connected to move the water from under the ground to all around Spokane.



3 We store water in tanks around our City to make sure we always have water when it is needed.

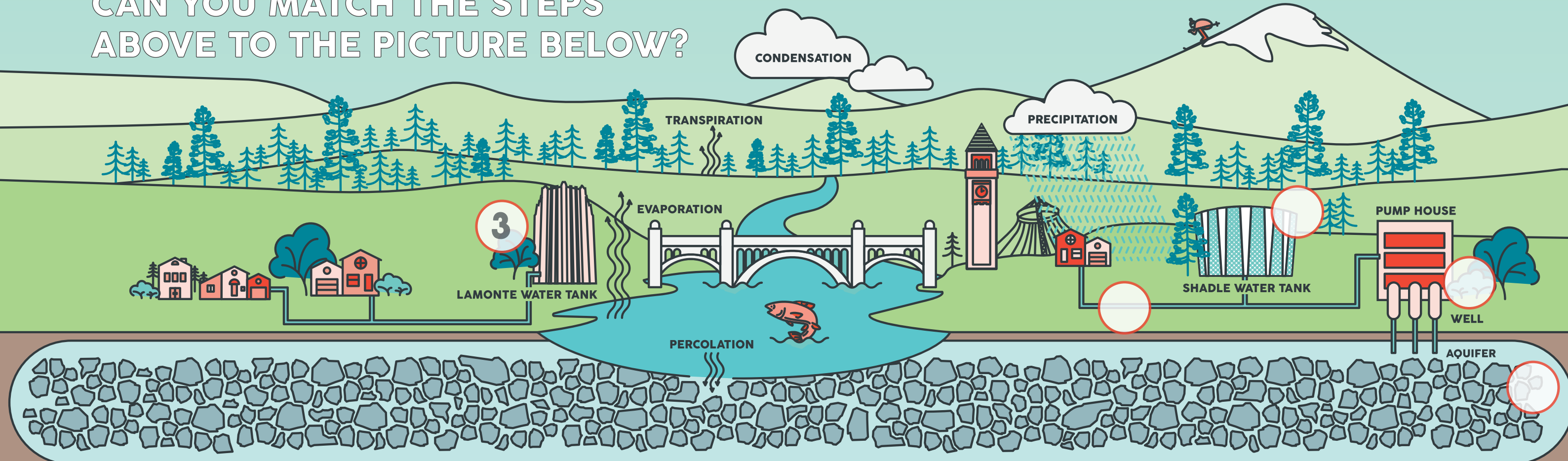


4 Water moves through hundreds of miles of underground pipes to get to your home!



It's always ready for you when you turn on the faucet to brush your teeth, take a shower or need a drink.

CAN YOU MATCH THE STEPS ABOVE TO THE PICTURE BELOW?



BE A WATER SUPERHERO!

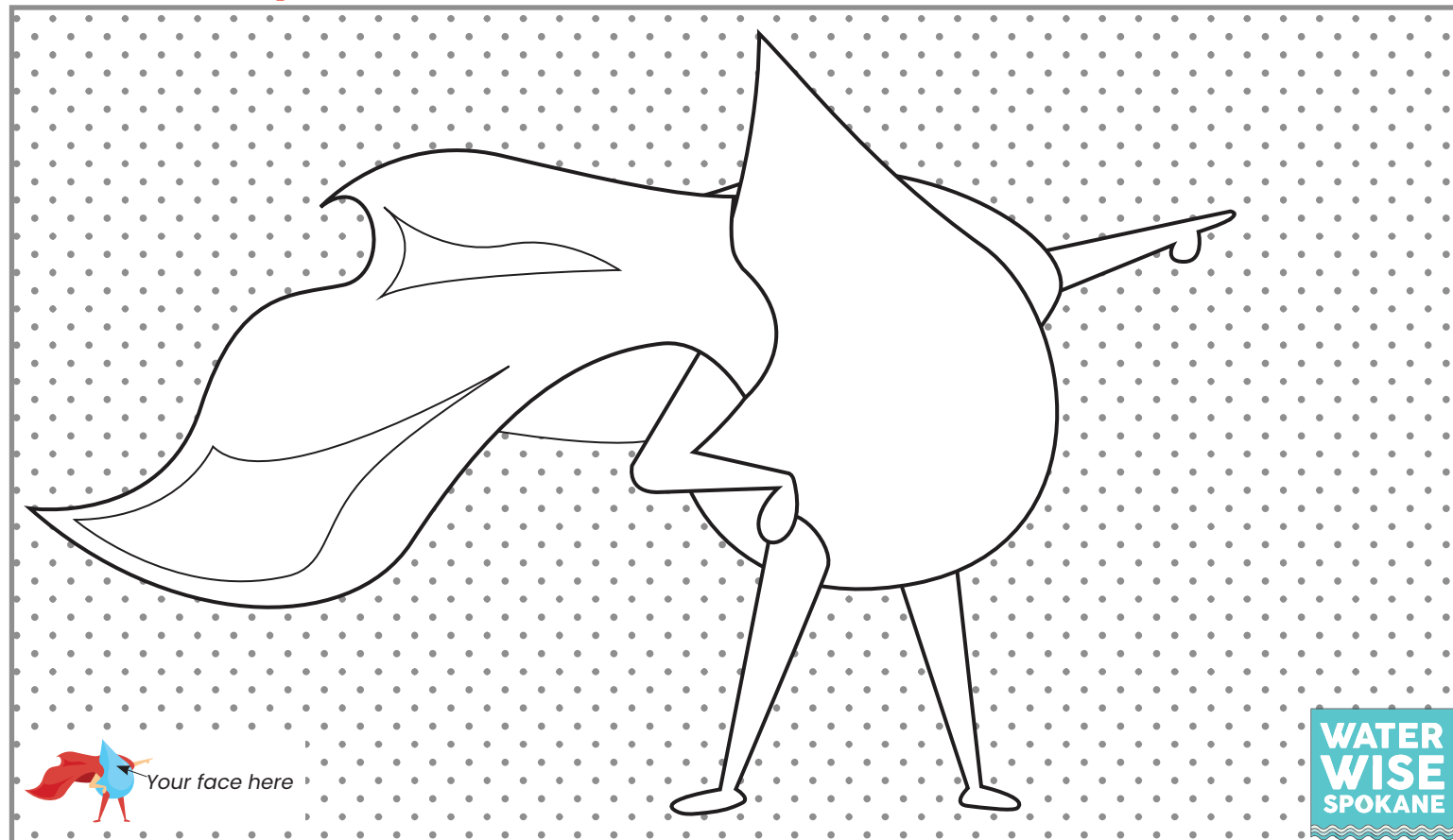
PICK YOUR SUPERHERO NAME & DRAW A SELF PORTRAIT

Pick Your Superhero Name

Use the First Letter of Your First Name			And the First Letter of Your Last Name		
A - Super	J - Captain	S - Wonder	A - River	J - Hurricane	S - Lake
B - Mighty	K - Doctor	T - Incredible	B - Snow	K - Ice	T - Rain
C - Fantastic	L - Brave	U - Amazing	C - Typhoon	L - Trout	U - Groundwater
D - Spectacular	M - Daring	V - Intergalactic	D - H ₂ O	M - Scientist	V - Percolation
E - Space	N - Terrific	W - Immense	E - Blizzard	N - Waterfall	W - Freshwater
F - Strong	O - Caped	X - Unstoppable	F - Pond	O - Tidal Wave	X - Defender
G - Universal	P - Sensational	Y - Astonishing	G - Warrior	P - Water Drop	Y - Ocean
H - Remarkable	Q - Mega	Z - Great	H - Storm	Q - Cloud	Z - Aquifer
I - Magnificent	R - Brilliant		I - Freeze	R - Protector	

My superhero name is: _____

Draw Your Superhero



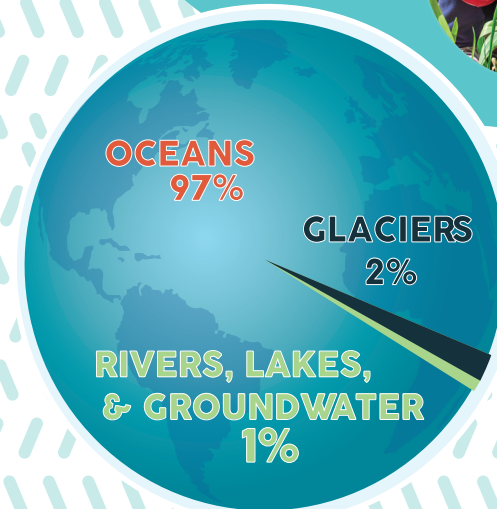
HOW OUR WATER WORKS

Every living thing on our planet needs water to survive and grow! That's why it is so important to keep waterways clean and use water wisely so we have plenty of clean water for a bright and healthy future. Can you think of some ways you use water every day?

DRAW A LINE FROM THE WATER DROP TO ALL THE THINGS YOU DO THAT USE WATER.



CIRCLE THE ROOM WE USE THE MOST WATER IN.



Did you know that the Earth is mostly water (71%)? Most of the water is found in oceans (97%) and some is in glaciers, lakes, rivers, and underground. Can you think of where you might see water in our community?

