

WHY ARE BEST MANAGEMENT PRACTICES (BMPs) IMPORTANT?

- ◇ Mobile wastewater is not just dirt and water, the wash waters may also contain soaps, debris, toxic chemicals, heavy metals, oils, and grease that are harmful to our sewer system.
- ◇ Pollutants that flow into the streets from mobile washing can enter the storm drain system that can flow to our river or contaminate soils in dry wells.

REQUIREMENTS

COMPLIANCE WITH LOCAL CODES

- ◇ All mobile washing operations that send wastewater to the sewer system must ensure their wastewater complies with all local codes and requirements.
- ◇ Only rain goes down the storm drain! Federal, state, and local regulations prohibit discharge of anything but rain water in the storm drain.
- ◇ For more information about local ordinance requirements, visit our agency websites for more information or call with any questions.

CONTACT US



City of Spokane
(509) 625-4600
my.spokanecity.org/pretreatment



Spokane County
(509) 477-3604
spokanecounty.gov/ipp



City of Airway Heights
(509) 939-7038
cawh.org/pretreatment

ADDITIONAL RESOURCES

HAZARDOUS WASTE HANDLING:

Department of Ecology
(509) 329-3400
www.ecy.wa.gov

Spokane Regional Health District
(509) 324-1560 ext. 3
www.srhd.org

For hazardous spills or any other emergencies, call 911

July 17, 2025

MOBILE WASHING OPERATIONS



COMMERCIAL WASTEWATER BEST MANAGEMENT PRACTICES (BMPs)

TIPS BEFORE YOU START CLEANING

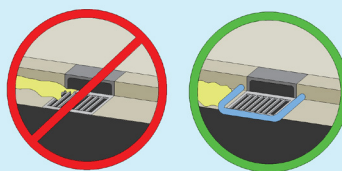
- ◇ Train your employees on best management practices before starting the job on-site and be prepared.
- ◇ Contact your local City or County to determine specific discharge requirements and prohibitions.
- ◇ Obtain permission to discharge wash waters to the property owner's sanitary sewer plumbing before starting the job.
- ◇ Develop a written spill response plan and keep spill clean up materials on-site to immediately clean up spills.
- ◇ Have materials and covers to protect the storm drains to prevent wash water from entering the storm sewer system.
- ◇ Dry sweep area to remove debris prior to washing.
- ◇ Walk the area where the washing activity is taking place to identify nearby storm drains prior to starting.
- ◇ To prevent solids from clogging the line, have strainers or filters for wash waters prior to discharge into the sanitary sewer.



BEST MANAGEMENT PRACTICES

BMPs are enforceable procedures that minimize pollutants before they enter the sewer system and help prevent pollutants from entering the environment.

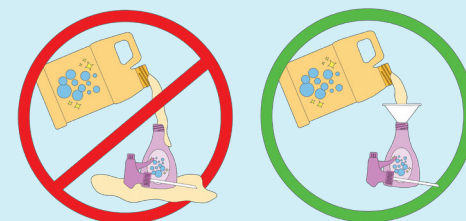
- ◇ After receiving approval from your City or County, small amounts of wash water may be diverted to landscape.
- ◇ After protecting storm drains, divert and collect wash waters (e.g., a shop vacuum) for easy disposal to the sewer (e.g., mop sink, toilet).
- ◇ Hazardous chemicals should never be poured down the sewer or storm drain.
- ◇ Oily waste must be treated as hazardous, or go through an oil-water separator.



- ◇ Have materials (e.g., berms, sand bags) to prevent untreated run off from entering the gutter or storm drain.
- ◇ Do not put any solids down the sewer or in the streets. This may cause clogs in our lines and lead to overflows.
- ◇ Do not release or discharge any wash water and/or wastewaters into the streets, gutters, or storm drains.

POLLUTION PREVENTION TIPS

- ◇ Use environmentally friendly cleaning products.
- ◇ Products may be labeled "nontoxic" or "biodegradable" but they can still harm wildlife and fish if improperly disposed of.
- ◇ Use a dry method like vacuuming or brushing prior to washing.
- ◇ Use spigots, pumps, and funnels when pouring solvents and cleaners.



- ◇ Contact your local hardware or construction material stores for available tools and materials for mobile businesses, including vacuum pumps, mats, sand or gravel bags, wattles, etc.
- ◇ Throw any solids or debris collected into a trash can.
- ◇ Check out our partner's website www.envirocertified.com for more best management practices and pollution prevention tips.