

WHY ARE BEST MANAGEMENT PRACTICES (BMPs) IMPORTANT?

BMPs are enforceable procedures, based on regulations, that minimize pollutants that are discharged to the sewer system or the environment. BMPs are needed at both industrial and commercial facilities that can produce wastewater containing higher levels of pollutants than what are typically found in residential wastewater.

REQUIREMENTS

COMPLIANCE WITH LOCAL CODES

- ◇ All clinical facility operations that send wastewater to the sewer system must ensure their wastewater complies with all local codes and requirements.

APPLY FOR A PERMIT IF NEEDED

- ◇ Clinical facilities must apply for a permit if they discharge over 25,000 gallons a day.

CONTACT US



City of Spokane
(509) 625-4600



Spokane County
(509) 477-7177



Airway Heights
(509) 443-5667

ADDITIONAL RESOURCES

HAZARDOUS WASTE HANDLING:

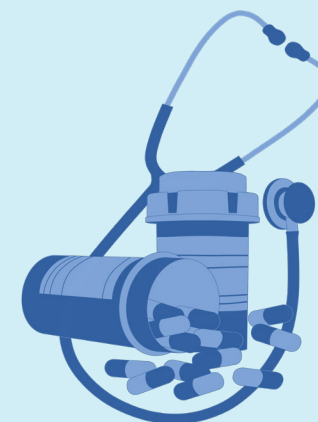
Department of Ecology
(509) 329-3400
www.ecy.wa.gov

Spokane Regional Health District
(509) 324-1560 ext. 3
www.srhd.org

For hazardous spills or any other
emergencies, call 911

April 17, 2025

CLINICAL FACILITY OPERATIONS



COMMERCIAL
WASTEWATER
BEST MANAGEMENT
PRACTICES (BMPs)

CLINICAL FACILITY BMPs

- ◇ Determine whether each waste material is hazardous using the guidelines in WAC 173-303-9903 and WAC 173-303-9904.
- ◇ Post signs above drains/sinks prohibiting the discharge of chemicals and oils.
- ◇ Make sure wash water does not run into the gutter or storm drain.
- ◇ Develop a written spill response plan, keep spill clean-up materials on site, immediately clean up any spills, train employees on clean up procedures, and replace leaking containers.
- ◇ Follow regulations from the Management Standards for Hazardous Waste Pharmaceuticals Ruling, 40 CFR 266 Subpart P.
- ◇ Proper waste disposal should also follow Resource Conservation and Recovery Act (RCRA) requirements.



- ◇ Dry sweep floors before mopping or hosing down.
- ◇ Do not flush anything containing the compounds listed in 40 CFR 261 Subparts C or D.

PLEASE DO NOT FLUSH ANY OF THE FOLLOWING MATERIALS:

- ◇ Vitamins, medicines, or other pharmaceuticals.
- ◇ Non-infectious medical waste, such as IV bags or tubing.
- ◇ Infectious medical waste, such as sharps or blood-saturated waste materials.
- ◇ Bandaging materials or examination gloves.
- ◇ Diapers, baby wipes, disinfectant wipes, or moist wipes; even if labeled "flushable."
- ◇ Sanitary napkins, tampons, condoms or any non-organic materials.
- ◇ Facial tissues, napkins, paper towels, wash cloths, towels or rags.
- ◇ Plastic of any kind, including X-ray or other diagnostic film media.
- ◇ Cotton swabs or other cotton products, dental floss, or hair.
- ◇ Storage and waste containers should have clear labels indicating their contents and hazards.

POLLUTION PREVENTION TIPS

These tips are not enforceable, but will help your business reduce its impact on the environment.

- ◇ Develop and follow a written Environmental Management Plan, periodically inspecting and repairing equipment.
- ◇ Use environmentally friendly cleaning products.
- ◇ Drain oil filters for 24 hours before disposing in the trash.
- ◇ Consult the "Best Management Practices for Hospital Waste" document published on the Spokane Aquifer Joint Board website.
- ◇ Consult the "Management of Hazardous Waste Pharmaceuticals" at the Environmental Protection Agency's website (www.epa.gov).



Isopropyl Alcohol