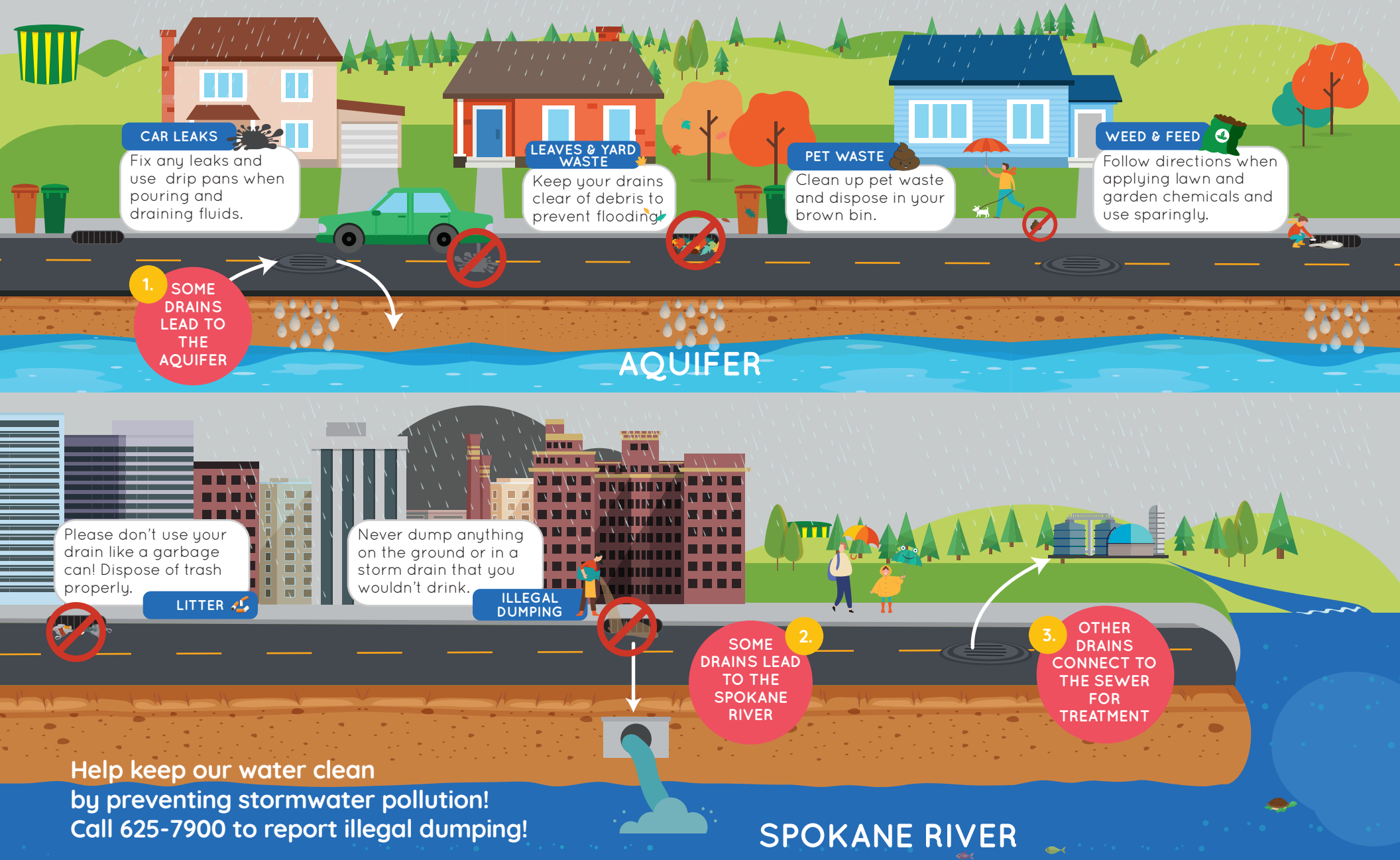


When It Rains, It Drains STORMWATER POLLUTION

When it rains and water hits hard surfaces, it creates stormwater runoff. This runoff picks up pollutants such as gasoline, motor oil, loose sediment, lawn chemicals, and pet waste and flows into the nearest storm drain or swale. Many storm drains discharge directly into the river or aquifer and stormwater pollution can cause serious negative impacts to them both. You can help keep the water in Spokane clean and healthy by following a few easy tips!



KNOW WHERE WATER FLOWS

The water that goes down a sink or toilet flows through a sewer system to a treatment facility where it is cleaned. Water that flows down a driveway or street into a gutter enters a storm drain.

Storm drains help prevent flooding by draining rainwater and melted snow off the streets and other hard surfaces. In Spokane, stormwater can:

- 💧 Drain directly to the Spokane River
- 💧 Drain into a drywell above the aquifer
- 💧 Mingle with sewage and flow to the Wastewater Treatment Plant
- 💧 Enter a grassy swale or rain garden

ONLY RAIN DOWN THE DRAIN

Regardless of where it flows, please remember that storm drains are only designed for stormwater.

YOU can help keep Spokane's water clean and healthy! Keep all hazardous material and waste out of storm drains - you'll be doing your part to reduce flooding and pollution of our river and aquifer.



Any liquids that enter stormwater drains other than rain are damaging to our waterways and are considered illicit discharges. Examples include:

- Car Soap
- Automotive Fluids
- RV Waste Tank Dumping
- Yardcare Products
- Hazardous Household Waste

**IF YOU SEE AN
ILLICIT DISCHARGE,
PLEASE CALL
625-7900**

FOR MORE INFORMATION, VISIT:

SpokaneStormwater.org

   @SpokaneCity



STORMWATER
from road to river



A Residential Guide