



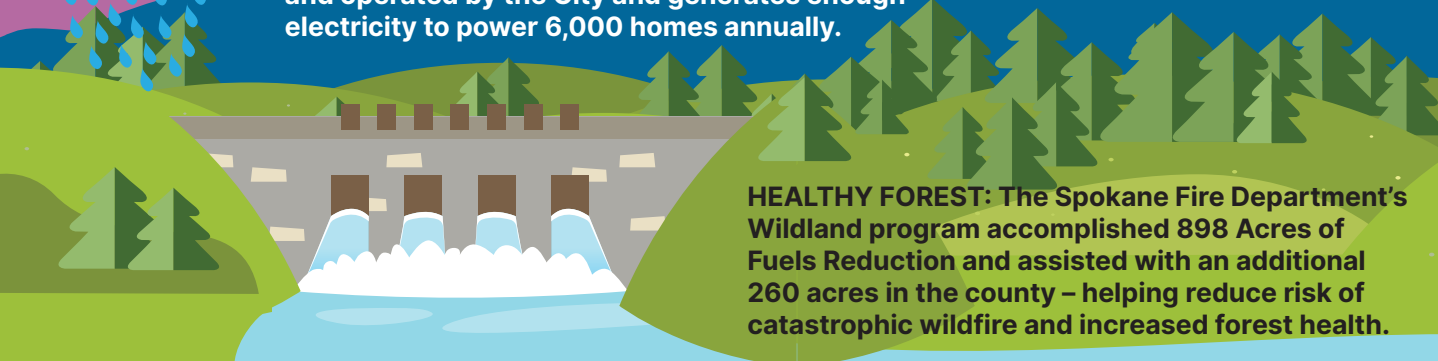
# City of Spokane 2025 Environmental Highlights

## Renewable Energy

**ELECTRICITY GENERATED:** Upriver Dam is owned and operated by the City and generates enough electricity to power 6,000 homes annually.

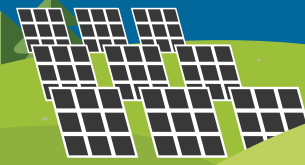


**HEALTHY FOREST:** The Spokane Fire Department's Wildland program accomplished 898 Acres of Fuels Reduction and assisted with an additional 260 acres in the county – helping reduce risk of catastrophic wildfire and increased forest health.



## Renewable Energy

**RENEWABLES PURCHASED:** As part of Avista's Solar Select Program, City Hall acquires enough solar power to charge an electric vehicle 16,000 times.



**ELECTRICITY GENERATED:** The volume of City garbage is reduced by 90% when it goes through the Waste to Energy facility and provides enough electricity to power 13,300 homes annually instead of going to landfills.



## Planning & Redevelopment

**ALTERNATIVES:** The City added 4.98 miles of bikeways, greenways, and shared use trails, giving us 135 miles.



**HEALTHY NEIGHBORHOODS:** Updated irrigation systems and SpokaneScape landscaping are being installed at various parks and other City properties to conserve water.

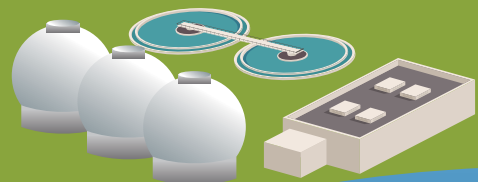


## Urban Forestry

**SPOCANOPY:** 891 trees and 2,132 tree seedlings were planted working toward the goal of having 30% canopy coverage in neighborhoods by 2030.



## Stormwater & Wastewater



**CLEANER RIVER:** The City's Combined Sewer Overflow tanks captured 89M gallons of wastewater from the combined sewer system, sending it to the Riverside Park Water Reclamation Facility for treatment. The treatment plant itself treated 12.5B gallons of wastewater overall.

## Water Department

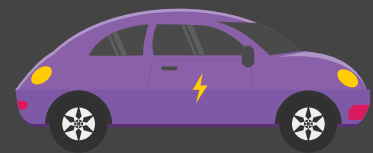
**WATER WISE:** The City continues to upgrade and replace outdated irrigation equipment, as well as install SpokaneScape across its properties to maximize water conservation.

<b>S</b> EVEN addresses	<b>TAKE A DAY OFF</b>	<b>T</b> ODD addresses	<b>TW</b> EVEN addresses	<b>T</b> ODD addresses	<b>F</b> EVEN addresses	<b>S</b> ODD addresses
← NO WATERING BETWEEN 10:00 a.m. – 6:00 p.m. →						

**WATER WISE:** Thank you for being Water Wise! The commercial efficiency program helped save 20.2M Gallons of water in 2025. The residential program provided 269 Water Saving Rebates and helped 6,200 community participants. Remember to water every other day before 10am or after 6pm between June and October!

## Infrastructure

**FLEET SERVICES:** 108 electric vehicle chargers (including active projects) including a solar array for 6 micro-grid chargers.



## Solid Waste

**MOVING FORWARD:** 73.7% of the Solid Waste Collections fleet operates on compressed natural gas (CNG). All non CNG collection vehicles are fueled with renewable diesel. The WTE processed 248,781 tons of trash. 30,629 tons of organic material and 17,230 tons of recyclable materials—including glass, paper, plastic, and metals—were diverted.



# LEADING THE WAY

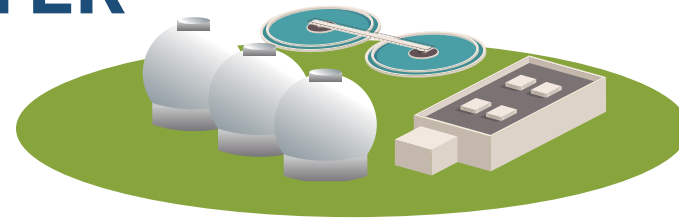
City of Spokane is unique. It **owns and operates most of its own utilities and services**. The operations of City facilities takes care of your daily needs while conserving materials, generating power, and saving citizens money. Many by generating and re-using their own energy!

- Riverside Park Water Reclamation Facility – **processes and treats an average of 34.3 million gallons of wastewater every day with Next Level of Treatment membrane technology** and digests solids to produce renewable biogas, returning energy to power the system.
- City-owned **Upriver Hydroelectric Dam harnesses the power** of the Spokane River to pump clean drinking water from the Spokane Valley Rathdrum Prairie Aquifer. The dam produces 61.6 million kWh annually. This **energy is used to deliver water to the community every day and the rest is purchased by Avista Utilities**, generating revenue for the City.
- Leading the region in diverse solid waste disposal, the City's **Waste to Energy Facility began operating in 1990**. It is the only facility of its kind in Washington and **processes all of the City's solid waste locally while generating 136 million kWh** at the same time – almost double the the dam's energy generation!



# A CLEANER RIVER FASTER

In 2014, the City committed to “a cleaner river, faster” through its **Integrated Clean Water Plan**. We continue to prioritize projects that have a greater impact on protecting the Spokane River by reducing pollution. Better stormwater management and improvements at our wastewater treatment plant provide environmental value. The



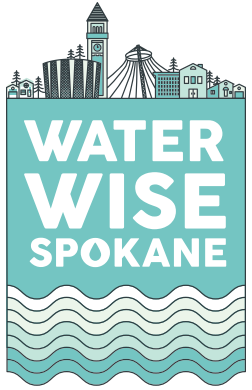
combined sewer overflow, advanced wastewater treatment, improving stormwater systems collectively provides **greater removal of solids, debris, oils, PCBs, heavy metals, and phosphorus** before going back into the ground and river. To further benefit the community, some of these facilities also provide recreational opportunities with river access, disc golf, and community festivals on site. Today, the City **cleans and treats over 99% of wastewater and stormwater before it is returned to the Spokane River. SWALE YEAH!**



# WATER WISE FROM AQUIFER TO FAUCET

City of Spokane owns and operates its own water distribution system. More than **1,100 miles of large and small water pipes make up a complex network**, bringing water from the depths of the Spokane Valley Rathdrum Prairie Aquifer to our homes and businesses.

- Delivers up to **180 million gallons** of clean, safe **drinking water** to more than **250,000 people every day**.
- With additional capacity under construction, the City's water system can **store 115 million gallons** of water in **37 towers and reservoirs** for on-demand drinking water and fire safety services.
- Operates and maintains **8 wells and 75 pumps to push water** through **25 pressure zones**.



# WHERE YOUR PATH TAKES YOU

The City's **Urban Forestry team and The Lands Council collaborate for SpoCanopy**. Every person in every neighborhood in Spokane has **easy access to trees and green space**. With the help of diverse community tree-planting volunteers, the City will meet the goal of 30% canopy cover by 2030 in every neighborhood.

The City's **WheelShare program provides alternatives** to “getting there” with **electric scooters and bikes** along with over **130 miles of bike paths, greenways and shared-use trails**. However you travel, you'll enjoy the trip and the view!



# THE POWER OF TRASH

Spokane's Waste to Energy (WTE) Facility is part of our community's overall comprehensive solid waste system. The City's solid waste system **encourages recycling and waste reduction—along with the recovery of energy**.

- The facility **burns municipal solid waste instead of utilizing landfills**.
- Enough steam is generated from combustion to make **electricity that is used to power the plant and provides about \$5 million in renewable energy revenue** annually.
- It's enough electricity to **power 13,300 homes every day and reduces solid waste by 90% in volume and 70% in weight!**



Learn more at [GreenSpokane.org](https://www.greenspokane.org)

