



City of Spokane 2022 Environmental Highlights



Water Department

ELECTRICITY GENERATED: Upriver Dam is owned and operated by the City and generates enough electricity to power 6,000 homes annually.

WATER WISE: 44M Gallons saved by replacing outdated irrigation equipment, turf and installing recirculating ponds throughout the City as part of the Spokane Water Wise program.



WATER WISE: City of Spokane begins education for Drought Response Measures Ordinance to prevent over-watering between June and Oct.



Urban Forestry

SPOCANOPY: Planted 1,408 trees towards the goal of having 30% coverage in neighborhoods by 2030.

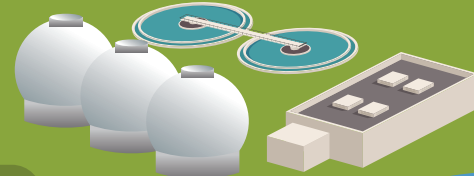


Infrastructure

ELECTRIC ACCESS: 20 electric vehicle chargers were installed city-wide, bringing the total to 33.



Stormwater & Wastewater



CLEANER RIVER: Riverside Park Water Reclamation Facility and the City's Combined Sewer Overflow tank system cleaned 99.6% of water before it goes back into the Spokane River.



Parks

WATER WISE: City Parks saved 73M Gallons of water with improved irrigation systems. That's enough to fill the Shadle Water Tower over 15 times.



Renewable Energy

ELECTRICITY GENERATED: As part of Avista's Solar Select Program, City Hall acquires enough solar power to charge an electric vehicle 16,000 times.



ELECTRICITY GENERATED: The volume of City garbage is reduced by 90% when it goes through the Waste to Energy facility and provides enough electricity to power 13,000 homes annually instead of going to landfills.



Planning & Redevelopment

EPA AWARD: Riverfront Park was recognized with the Phoenix Award for excellence for redeveloping a polluted Brownfield site into a regional outdoor asset.

ALTERNATIVES: The City added 7 miles of bikeways, greenways, and shared use trails, giving us over 108 miles.



Solid Waste

REDUCED EMISSIONS: Changes made to City garbage trucks eliminated CO2 emissions equal to 300 gasoline-powered passenger cars.

MOVING FORWARD: Reached 53% of garbage trucks being converted to compressed natural gas. The goal is 100% by 2027.

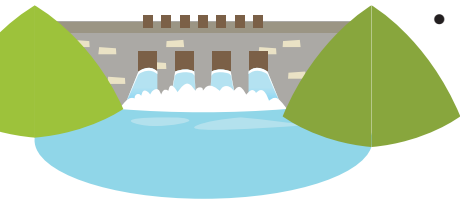
ALTERNATIVES: In partnership with Lime, car trips were reduced by 428,000.



LEADING THE WAY

City of Spokane is unique. It **owns and operates most of its own utilities and services**. The operations of City facilities takes care of your daily needs while conserving materials, generating power, and saving citizens money. Many by generating and re-using their own energy!

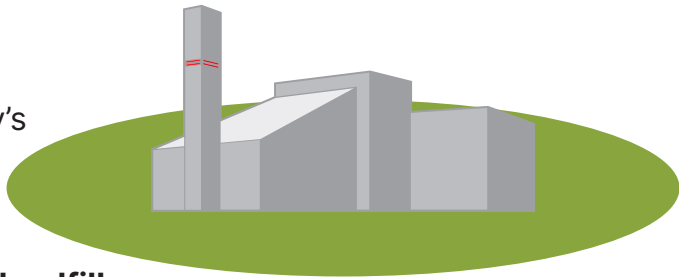
- Riverside Park Water Reclamation Facility – **processes and treats an average of 34 million gallons of wastewater every day with Next Level of Treatment membrane technology** and digests solids to produce renewable biogas, returning energy to power the system.
- City-owned **Upriver Hydroelectric Dam harnesses the power** of the Spokane River to pump clean drinking water from the Spokane Valley Rathdrum Prairie Aquifer. The dam produces 74 million kWh annually. This **energy is used to deliver water to the community every day and the rest is purchased by Avista Utilities**, generating revenue for the City.
- Leading the region in diverse solid waste disposal, the City’s **Waste to Energy Facility began operating in 1990**. It is the only facility of its kind in Washington and **processes all of the City’s solid waste locally while generating electricity** at the same time.



THE POWER OF TRASH

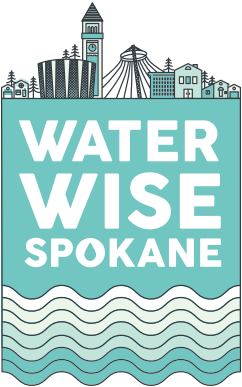
Spokane’s Waste to Energy (WTE) Facility is part of our community’s overall comprehensive solid waste system. The City’s solid waste system **encourages recycling and waste reduction—along with the recovery of energy**.

- The facility **burns municipal solid waste instead of utilizing landfills**.
- Enough steam is generated from combustion to make **electricity that is used to power the plant and provides about \$5 million in renewable energy revenue** annually.
- It’s enough electricity to **power 6,000 homes every day and reduces solid waste by 90% in volume and 70% in weight!**

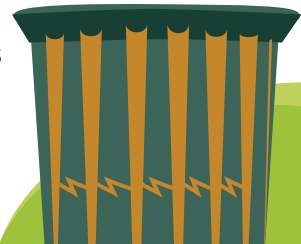


WATER WISE FROM AQUIFER TO FAUCET

City of Spokane owns and operates its own water distribution system. More than **1,100 miles of large and small water pipes make up a complex network**, bringing water from the depths of the Spokane Valley Rathdrum Prairie Aquifer to our homes and businesses.

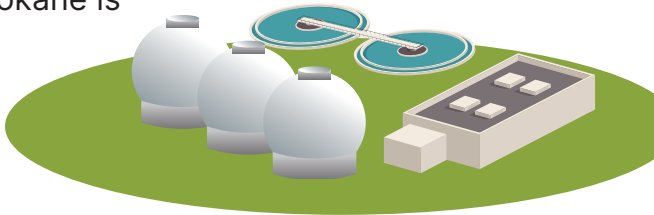


- Delivers up to **180 million gallons** of clean, safe **drinking water** to more than **250,000 people every day**
- **Stores 105 million gallons of water** in 34 towers and reservoirs throughout the City for on-demand and fire safety services
- Operates and maintains **14 wells and 72 pumps to push water** through **23 different pressure zones**
- The **Water Wise Program** has worked with City of Spokane Parks and Recreation, homeowners, and commercial businesses to **reduce water use of over 115 million gallons per year**

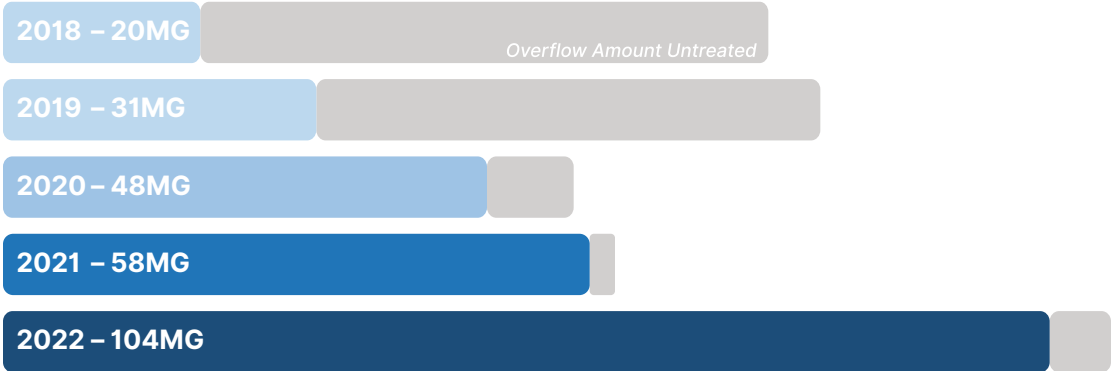


A CLEANER RIVER FASTER

The Integrated Clean Water Plan has completed a series of projects to **control overflows from combined sewers into the Spokane River**. Management of **stormwater coming from what’s commonly called the Cochran Basin** on the North Side of Spokane is nearly complete and continues to decrease pollution events. The projects provide greater removal of PCBs, heavy metals, total suspended solids, and phosphorus than these projects would on their own. The **Combined Sewer Overflow tank system cleaned 99.6% of water before it went back into the Spokane River**.



Millions of Gallons of Sewer and Run-Off*
Treated Before Reaching the Spokane River



**Annual rainfall volume and velocity measurements vary and impact number of overflow events.*

WHERE YOUR PATH TAKES YOU

The City’s **Urban Forestry team and The Lands Council collaborate for SpoCanopy**. Every person in every neighborhood in Spokane has **easy access to trees and green space**. With the help of diverse community tree-planting volunteers, the City will meet the goal of 30% canopy cover by 2030 in every neighborhood. The City’s **WheelShare program provides alternatives** to “getting there” with **electric scooters and bikes** along with over **108 miles of bike paths, greenways and shared-use trails**. However you travel, you’ll enjoy the trip and the view!



Learn more at GreenSpokane.org

