

2019 Environmental Report Card

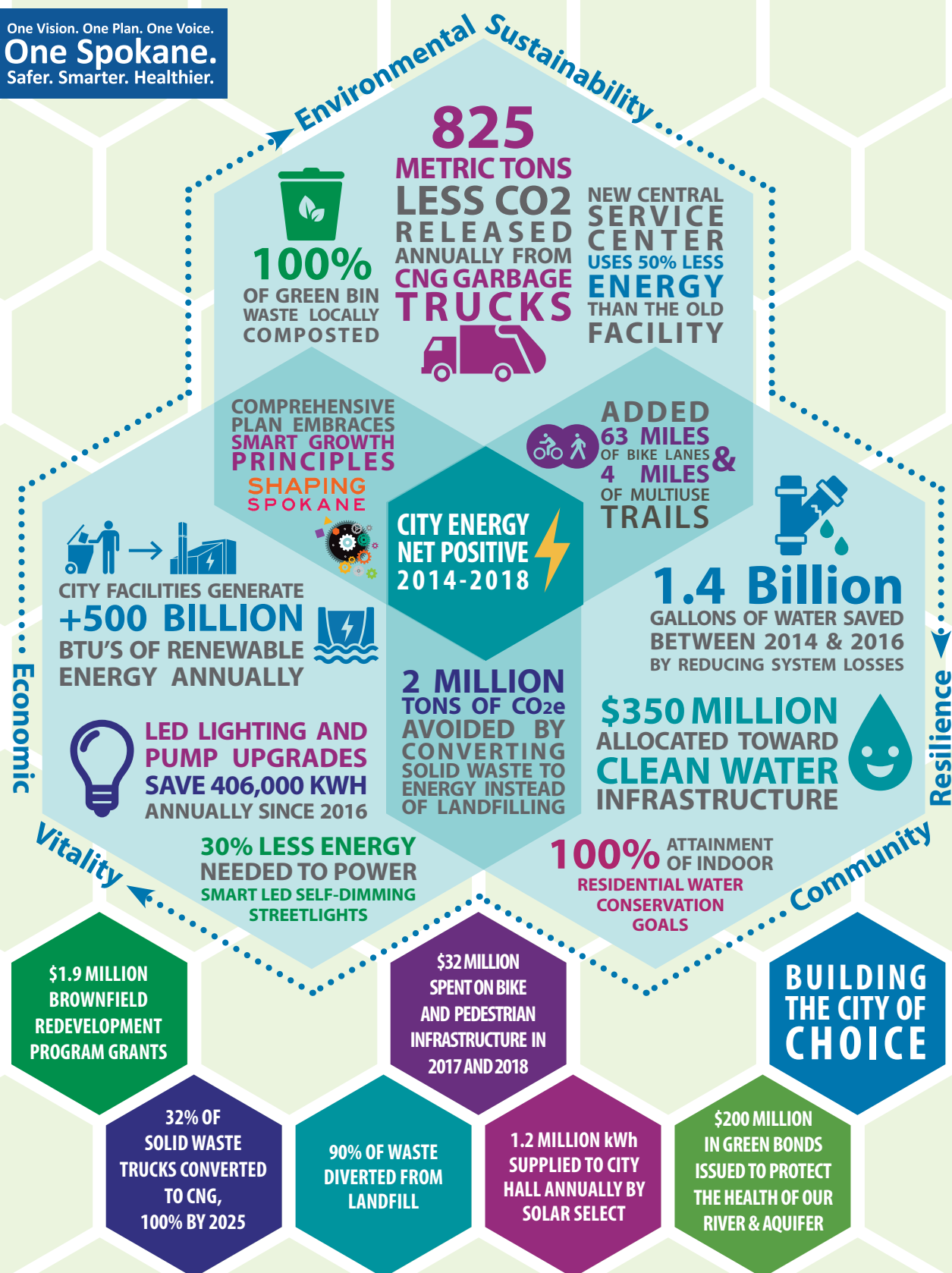


For nearly two decades, the City has been doing its part to build sustainable practices. Since 2012, the City has focused on actions that are environmentally and financially responsible. Based on a culture of continuous improvement and a desire to leave it better than we found it, the City has been quietly leading by example.



One Vision. One Plan. One Voice.

One Spokane.
Safer. Smarter. Healthier.



10 Implementation Plan




STEP

Sustainable Environmental and Financial Responsibility

For nearly two decades, the city has been doing its part to build sustainable practices. Today, the city is focused on actions that are environmentally and financially responsible. Based on a culture of continuous improvement and a philosophical desire to leave it better than we found it, the city has been quietly leading by example.

Progress Measure

- – No progress
- – Little Progress
- – Some Progress
- – Good Progress
- – Completion

1	Sustainable, Integrated, Resilient Infrastructure Build and effectively manage innovative infrastructure that promotes clean water, integrated streets, and emphasizes green infrastructure and low-impact development for stormwater. Leverage multiple benefits and partnerships through the ICWP, Urbanova, Smart Cities, University District, and Public Development Authorities.	Progress Measure ●●●●○ The “cleaner river faster” initiative is removing tens of millions of gallons of combined wastewater from the river for \$150 million less than originally anticipated. Green bonds, believed to be among the first sold by a municipality, have helped fund the improvements. The West Plains PDA Eco District was recently added to our portfolio.
2	Wise Land Stewardship Continue to aggressively carry out infill development strategies and optimize public land assets to drive green economic development. Infill development policies yield the highest impact to environmental challenges posed by climate change, including increasing energy security and reducing greenhouse gas emissions through efficient transportation, maintaining open space, integrated stormwater management, and carbon sequestration.	Progress Measure ●●●○○ Innovative approaches have put \$250 million of underutilized public land, assets and right of way to work to drive economic growth, jobs and income, while developing a net-zero energy business plan. Comprehensive Plan update is on schedule, Brownfield Redevelopment Program has demonstrated success in securing grants, and citizens and businesses are embracing Smart Growth principles.
3	 Clean Air Maximize our waste-to-energy infrastructure asset. Methane from landfilled trash is 25 times more potent than the carbon dioxide released from the city’s Waste to Energy Plant. Research ways to optimize use of city waste streams including ash and biosolids. 4th GHG inventory completed in 2019.	Progress Measure ●●●●○ The city has a track record of leveraging hydro and solid waste power generation assets and capacity in an innovative and integrated manner to grow jobs and income. Recycling goals are on track, GHG reporting is on schedule, air quality emission standards are being met, new studies to optimize waste stream utilization are under way, and plant efficiency continues to increase.
4	Save Water Conserve everywhere to preserve water for fish, animals and people. Continue to set, monitor and achieve measurable improvements in water conservation in the residential, business and industrial sectors, including reducing system losses.	Progress Measure ●●●●○ The city water resource business and marketing plan emphasizes conservation and stewardship. System losses dropped from 19.94% in 2012 to 11.68% in 2016 and are rapidly approaching state goal of 10%. Metering issues continue to challenge outdoor goals, launched key strategies including SpokaneScape.
5	 Right-Sized Transportation Realize greater commute trip reduction gains at City properties, support STA and alternate modes of transportation through planning and infrastructure.	Progress Measure ●●●○○ Centralizing the city’s fleet service center reduced city vehicle trips and increased operational efficiency. Central City Line, Monroe, East Sprague infrastructure projects implement integrated approach. Install employee charging stations.
6	Solid Waste, Zero Waste Continue education, outreach and management to achieve zero landfilled waste, and market this asset to recruit environmentally responsible businesses.	Progress Measure ●●●●○ The city is developing a net-zero landfill plan. Continued increase in recycling, composting and adoption of green waste containers. Explore re-use of ash and sustainable materials management.
7	Create Energy Security Evaluate and install distributed small-scale power technologies in city facilities, explore renewable options such as solar and biogas for water pumping and waste treatment. Partner for creative, forward-looking ways to manage the city’s energy generating ability and net-zero status.	Progress Measure ●●●○○ Maximizing hydro power generation, converting the city’s garbage fleet to CNG and replacing traffic signal lights citywide with LED bulbs are among the proactive steps that have helped the city become net energy positive 2014 – 2018. Feasibility studies under way, and grant applications in.
8	 Improve Environmentally Friendly Purchasing Policies Continue to improve existing policies and work with the state to leverage its practices.	Progress Measure ●●●●○ City policy requires existing vehicles to be replaced by more energy efficient vehicles. City is reviewing and updating existing policies to strengthen and incorporate state developments. City departments are achieving goals currently.
9	Collaborative Governance Invite public, community and business partners to work alongside us as we continue to aggressively implement the Sustainability Action Plan and finalize the joint Mayor-Council Strategic Plan.	Progress Measure ●●●○○ Successful regional partnership includes shipment of solid waste by other agencies to the city’s Waste to Energy facility. Initial efforts to develop citizen-led climate collaborative have begun. Engaging higher education partners to leverage community capacity.
10	Continuous Improvement Monitor and critically evaluate to incorporate best practices from all emerging fields.	

