



Photo 1 – View to West Showing West End of Falls Avenue
(#2209 West Falls Avenue to South)



Photo 2 – View to East Along South Edge of Falls Avenue (Site to South)



Photo 3 – View to East Across Flat Bench Showing Foundations of Former House
(Steep Slope to South Toward River Shoreline)



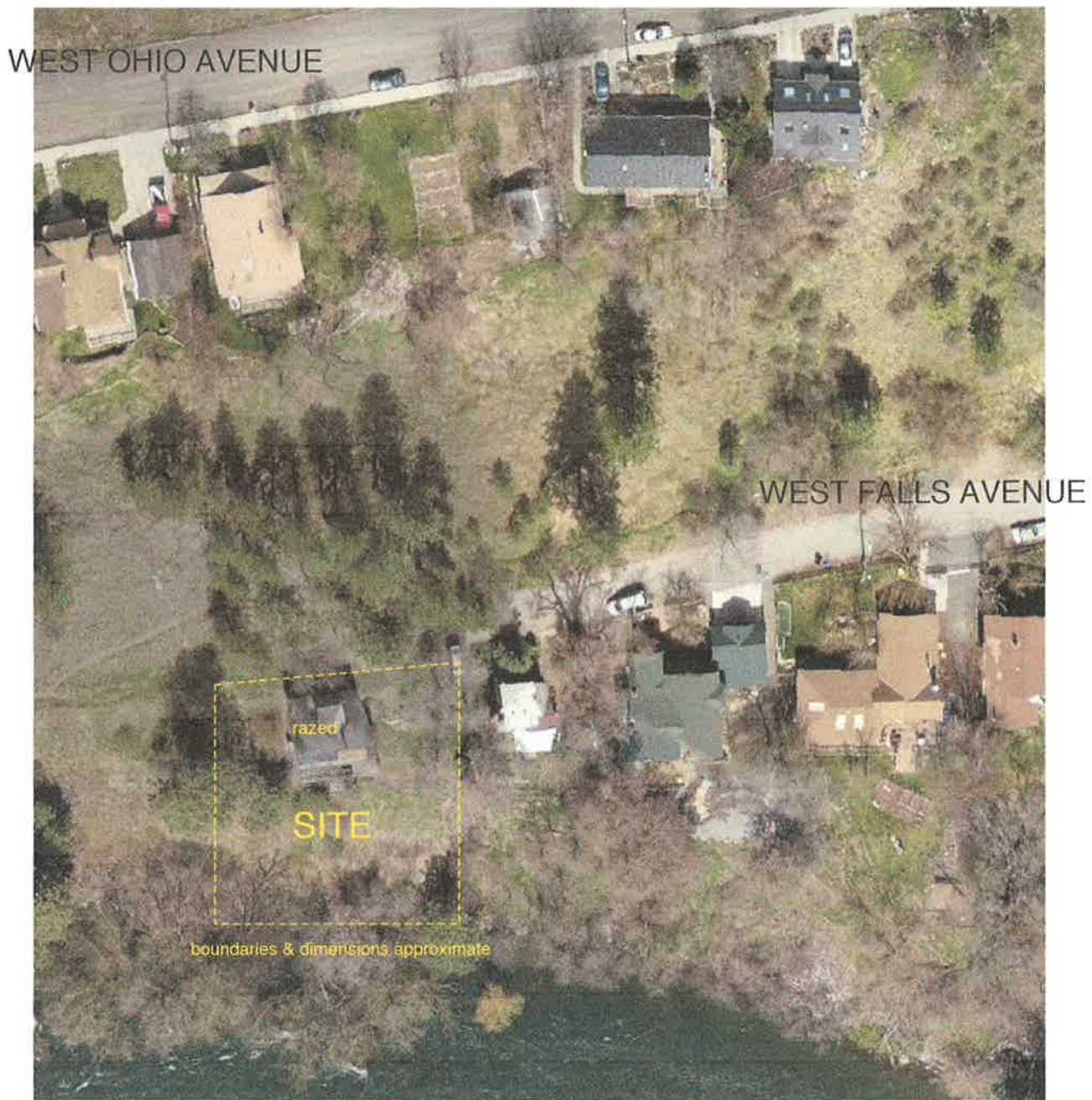
Photo 4 – View to West Across Site Showing Foundations and Slope Break on South



Photo 5 – View to West Showing Edge of Bench and Slope to River, Cistern and Footings/Slab/Walls of Former House and Porches



Photo 6 – View to Southeast Across East End of Site Showing Foundations and Area of Expansion for New House



City of Spokane MapSpokane Aerial Photo

2209 WEST FALLS AVENUE AERIAL PHOTO OF SITE VICINITY

↑
N
No scale