



## **Workshop - From Screenlines to Dreamlines**

*March 21, 2013*

Friday, March 22, 2013

# Tonight

Study scope

Existing conditions

Anticipated conditions

Exercises

Wrap up



**Workshop - From Screenlines to Dreamlines**

*March 21, 2013*

Friday, March 22, 2013

# Sponsors

WA Dept of Commerce

City of Spokane

City of Airway Heights

City of Medical Lake

City of Cheney

Spokane County

WSDOT

**Workshop - From Screenlines to Dreamlines**

*March 21, 2013*

Friday, March 22, 2013



# Scope

Updated arterial plan

Major highways

Arterial streets

Non-motorized routes

Character

Vision

**Workshop - From Screenlines to Dreamlines**

*March 21, 2013*

Friday, March 22, 2013



# Scope

Consider pathways

Consider alignments

Consider design



**Workshop - From Screenlines to Design**

*March 21, 2013*

Friday, March 22, 2013

# Existing Conditions



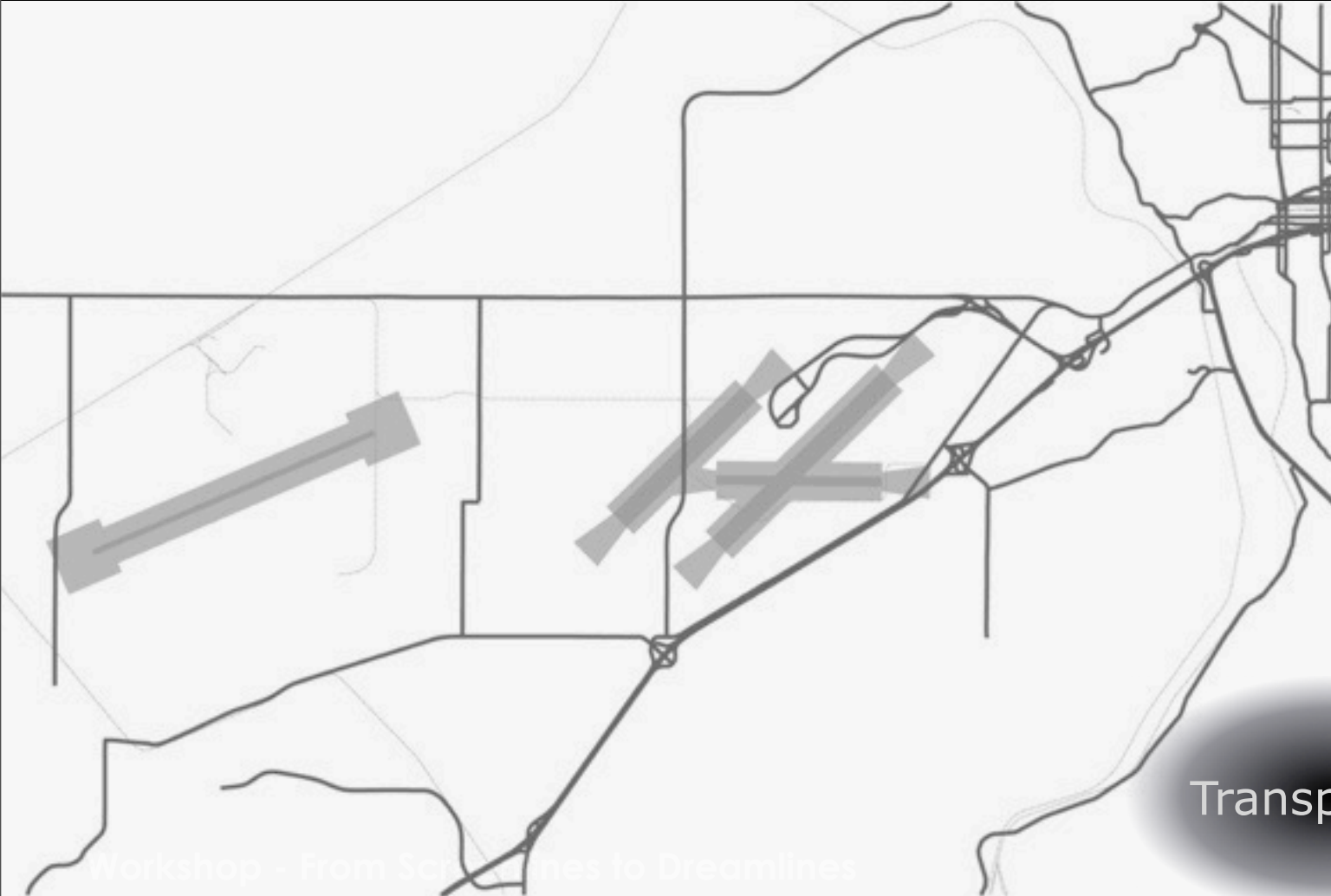
Topography

**Workshop - From Screenlines to Dreamlines**

*March 21, 2013*

Friday, March 22, 2013

# Existing Conditions



Transportation

Workshop - From Scenarios to Dreamlines

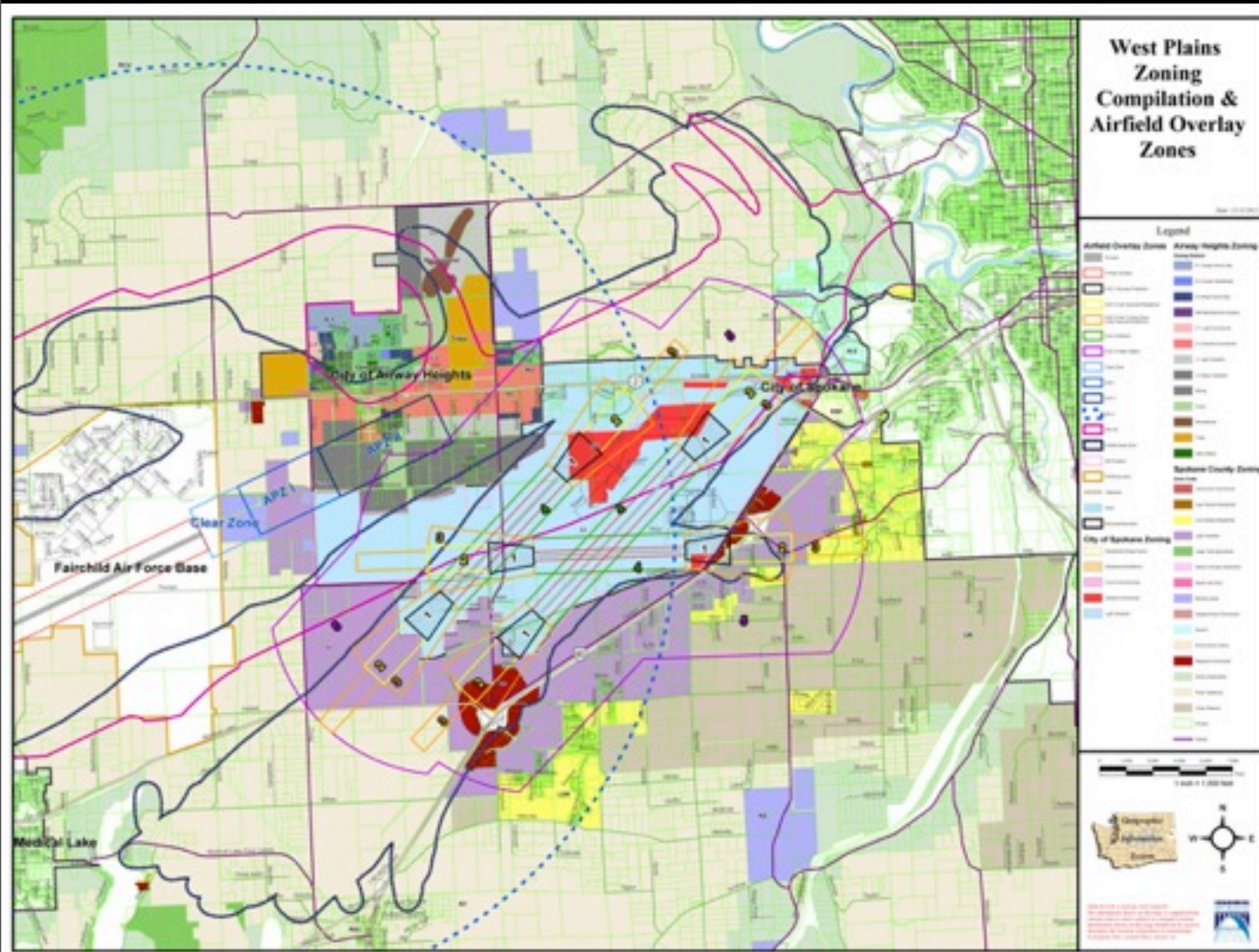
March 21, 2013

Friday, March 22, 2013



# Existing Conditions

Land use



# Existing Conditions

Land use



**Workshop - From Screenlines to Dreamlines**

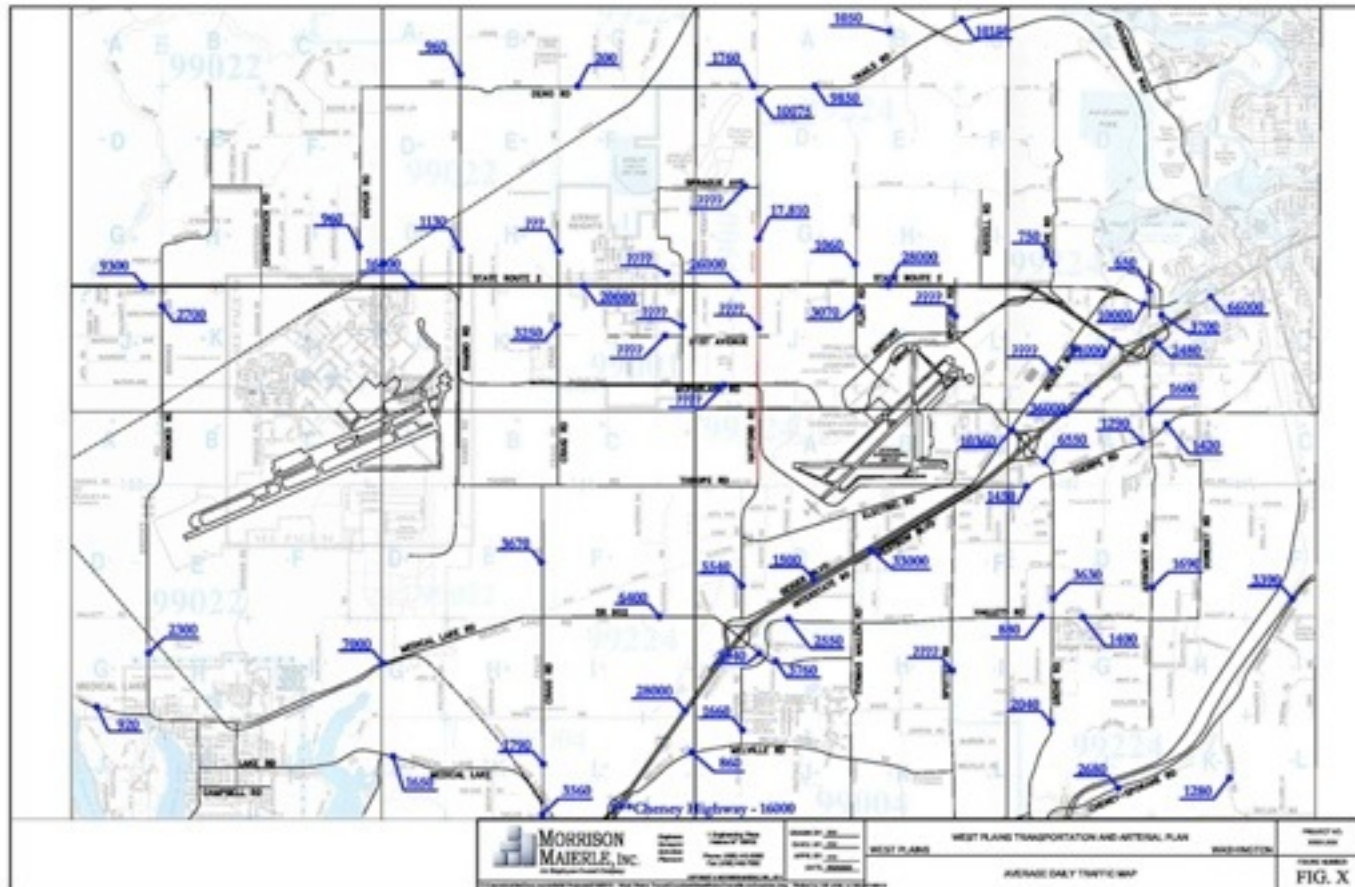
*March 21, 2013*

Friday, March 22, 2013



# Existing Conditions

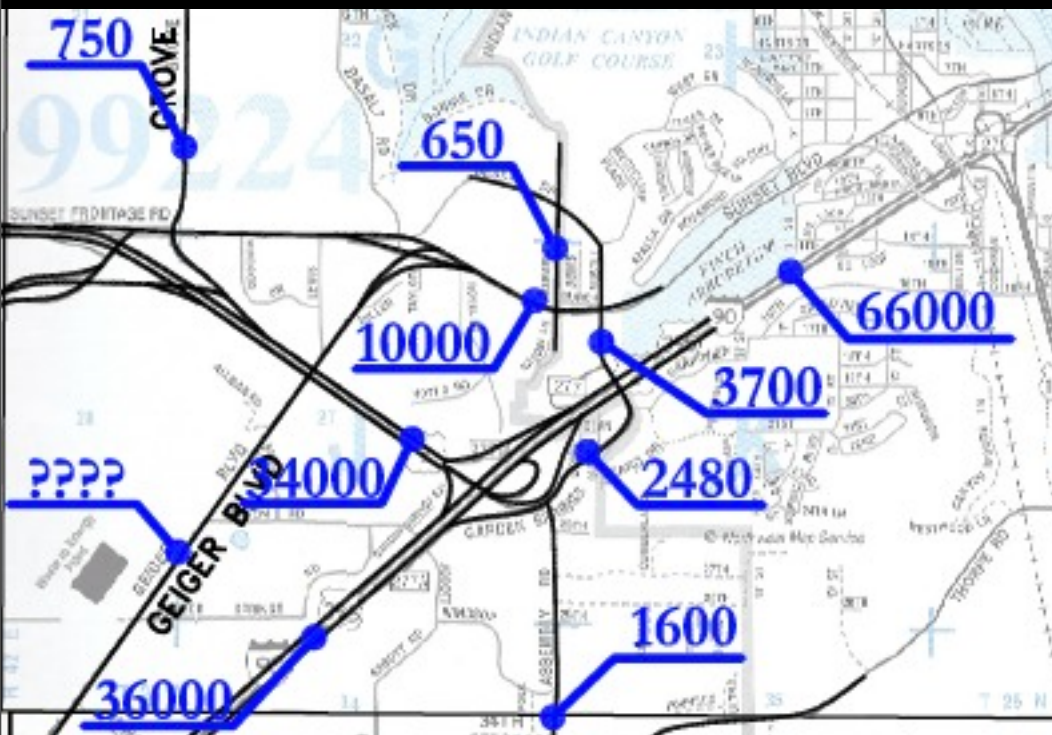
## Traffic volumes



# Existing Conditions

Traffic volumes

I-90



Workshop - From Screenlines to Dreamlines

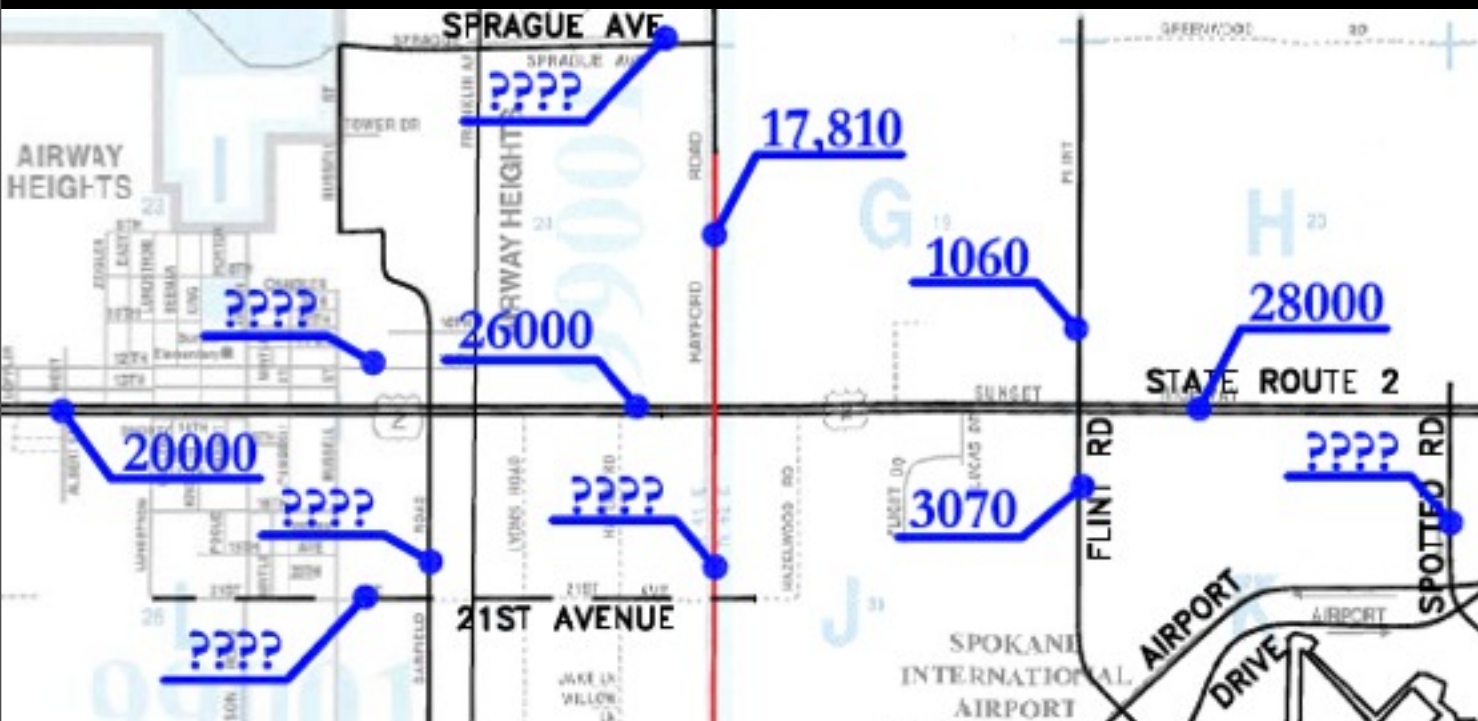
March 21, 2013

Friday, March 22, 2013

# Existing Conditions

# Traffic volumes

## Highway 2



## Workshop - From Screenlines to Dreamlines

March 21, 2013

Friday, March 22, 2013



# Existing Conditions

Traffic volumes  
I-90/SR 902



Workshop - From Screenlines to Dreamlines

March 21, 2013

Friday, March 22, 2013

# Existing Conditions

Traffic volumes  
SR 902



**Workshop - From Screenlines to Dreamlines**

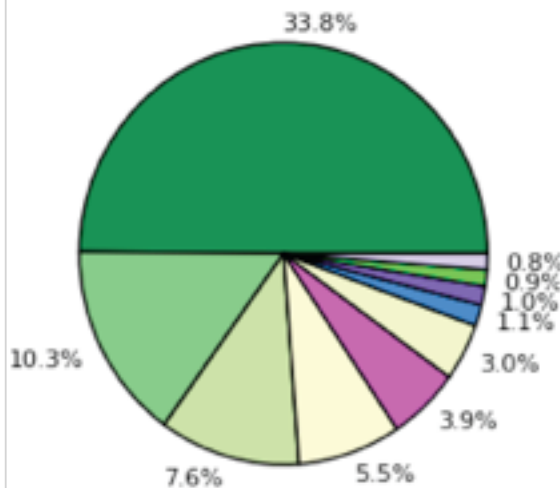
March 21, 2013

Friday, March 22, 2013

# Existing Conditions

Commute patterns -  
Where residents work

Job Counts by Work  
Places (Cities, CDPs, etc.) in 2010  
All Workers



Note: Jobs in All Other Locations  
(32.2%) are not shown in chart.

Jobs Counts by Places (Cities, CDPs,  
etc.) Where Workers are Employed -  
All Jobs

	2010	
	Count	Share
All Places (Cities, CDPs, etc.)	3,162	100.0%
Spokane city, WA	1,069	33.8%
Spokane Valley city, WA	326	10.3%
Airway Heights city, WA	239	7.6%
Seattle city, WA	175	5.5%
Cheney city, WA	122	3.9%
Medical Lake city, WA	94	3.0%
Kennewick city, WA	35	1.1%
Fairchild AFB CDP, WA	31	1.0%
Kent city, WA	27	0.9%
Liberty Lake city, WA	26	0.8%
All Other Locations	1,018	32.2%

Workshop - From Screenlines to Dreamlines

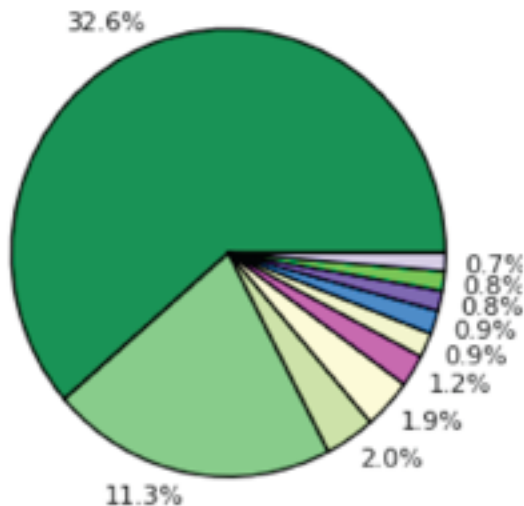
March 21, 2013

Friday, March 22, 2013

# Existing Conditions

Commute patterns -  
Where workers live

Job Counts by Home  
Places (Cities, CDPs, etc.) in 2010  
All Workers



Note: Jobs in All Other Locations  
(46.9%) are not shown in chart.

Jobs Counts by Places (Cities, CDPs,  
etc.) Where Workers Live - All Jobs

2010

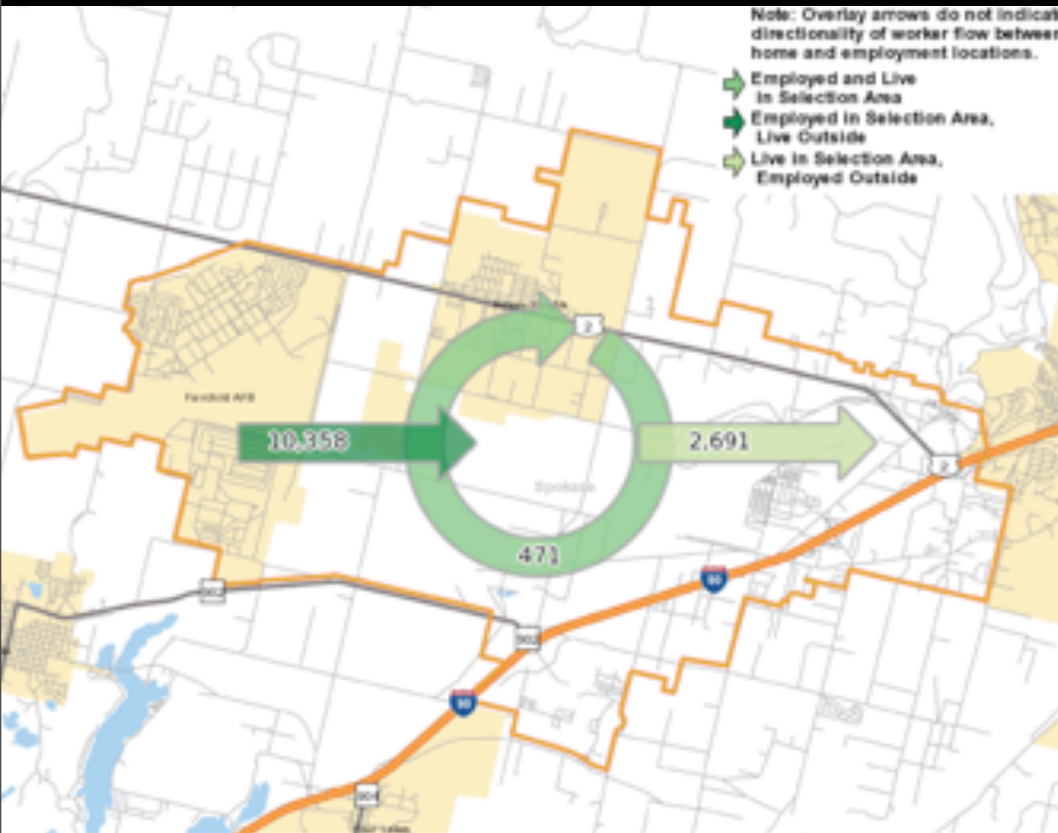
	Count	Share
All Places (Cities, CDPs, etc.)	10,829	100.0%
Spokane city, WA	3,530	32.6%
Spokane Valley city, WA	1,225	11.3%
Cheney city, WA	215	2.0%
Airway Heights city, WA	211	1.9%
Medical Lake city, WA	134	1.2%
Mead CDP, WA	102	0.9%
Fairwood CDP, WA	99	0.9%
Coeur d'Alene city, ID	83	0.8%
Post Falls city, ID	82	0.8%
Otis Orchards-East Farms CDP, WA	74	0.7%
All Other Locations	5,074	46.9%

Workshop - From Screenlines to Dreamlines

March 21, 2013

Friday, March 22, 2013

# Existing Conditions



Jobs/housing balance

Come here to work

Stay here to work

Leave to work

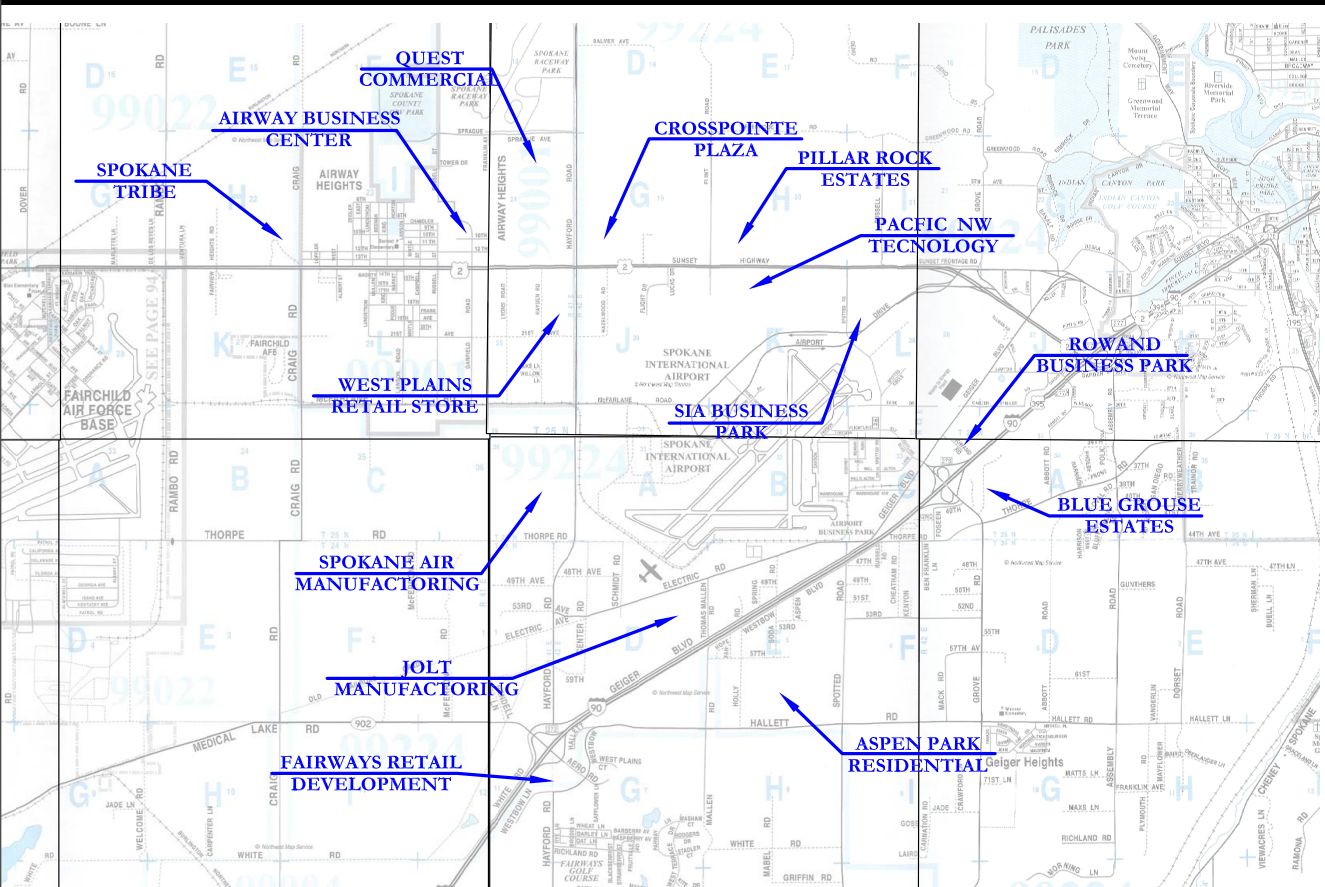
**Workshop - From Screenlines to Dreamlines**

March 21, 2013

Friday, March 22, 2013

# Future Conditions

## Development



Workshop - From Screenlines to Dreamlines

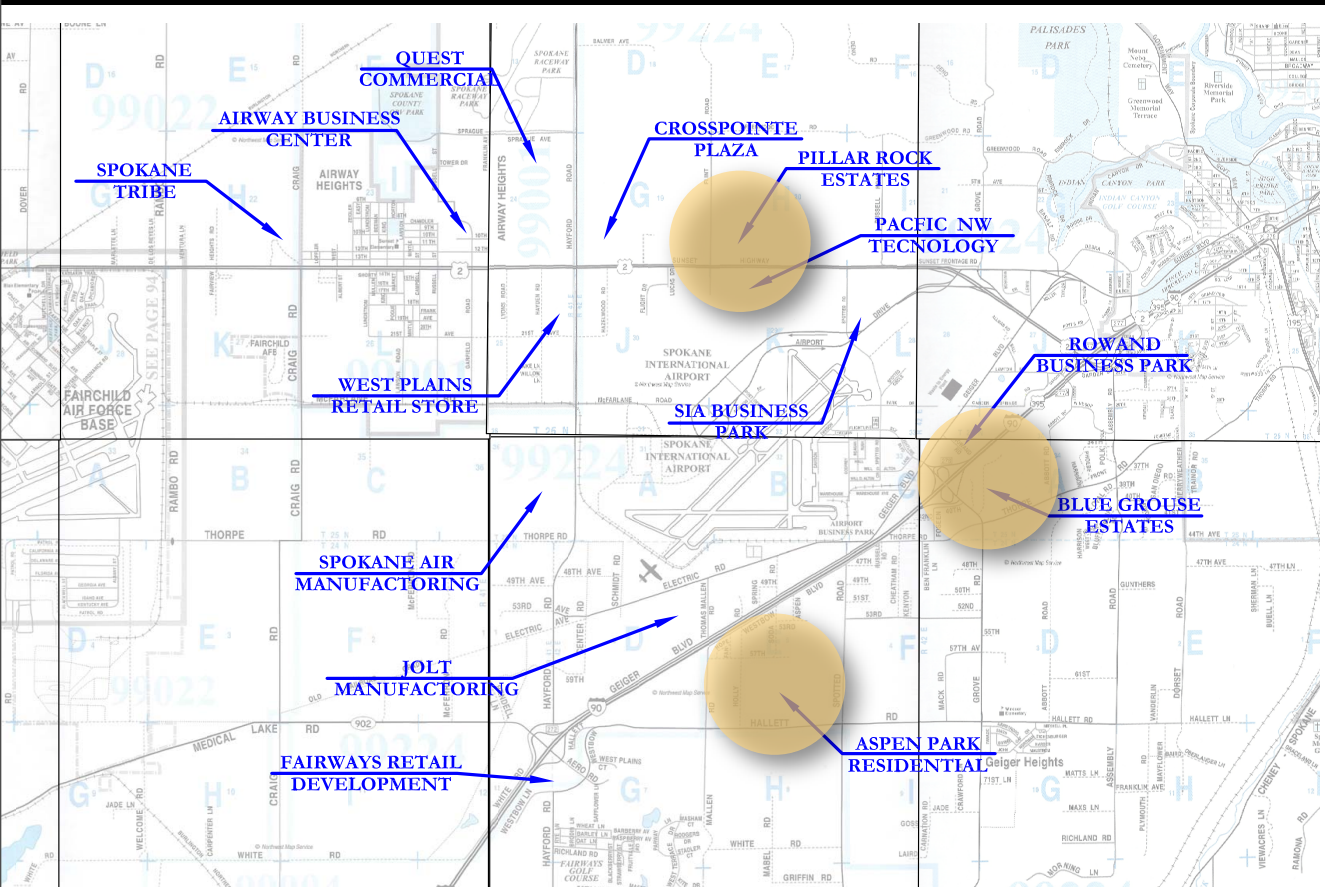
March 21, 2013

Friday, March 22, 2013



# Future Conditions

## Development



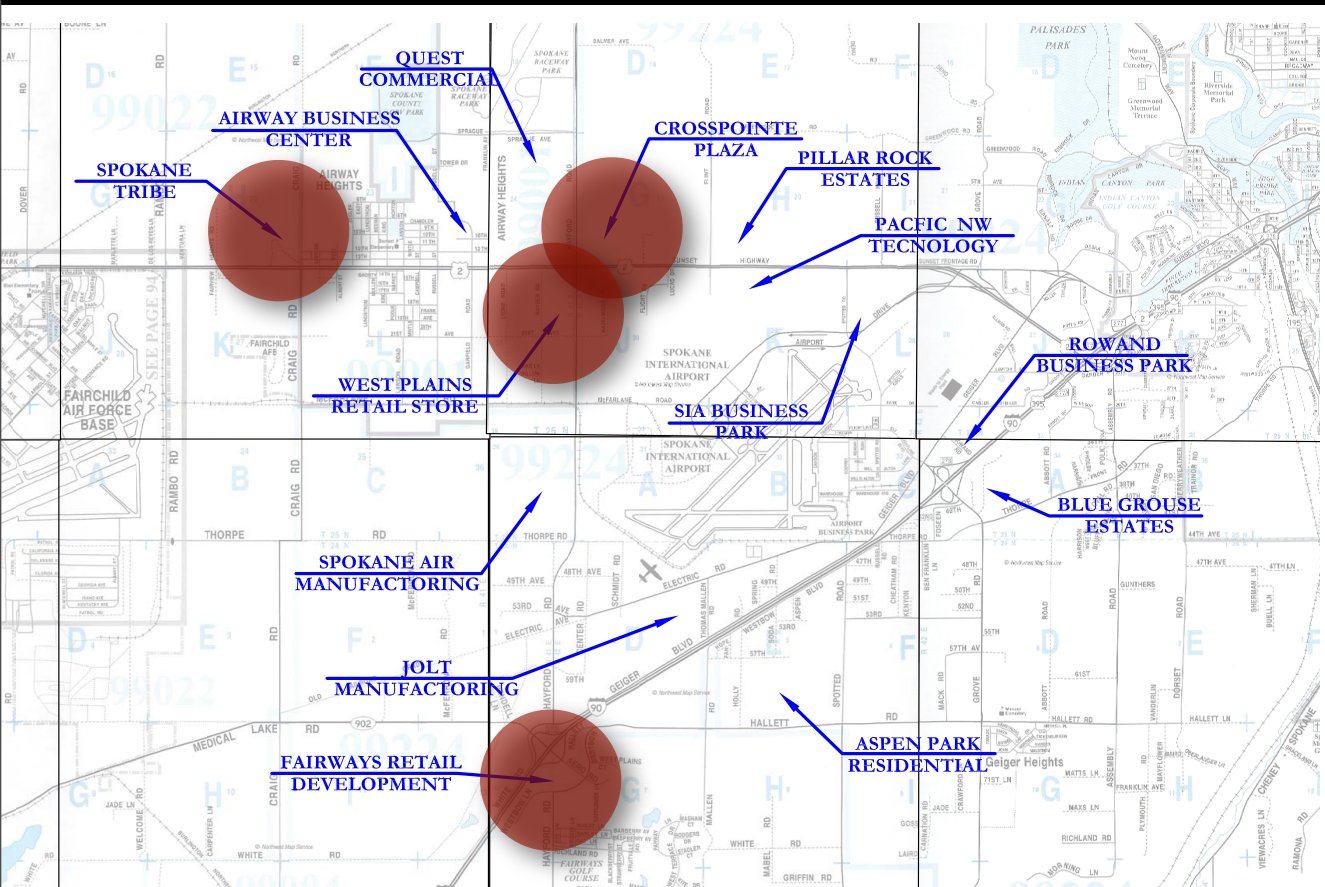
Workshop - From Screenlines to Dreamlines

March 21, 2013

Friday, March 22, 2013

# Future Conditions

## Development



Workshop - From Screenlines to Dreamlines

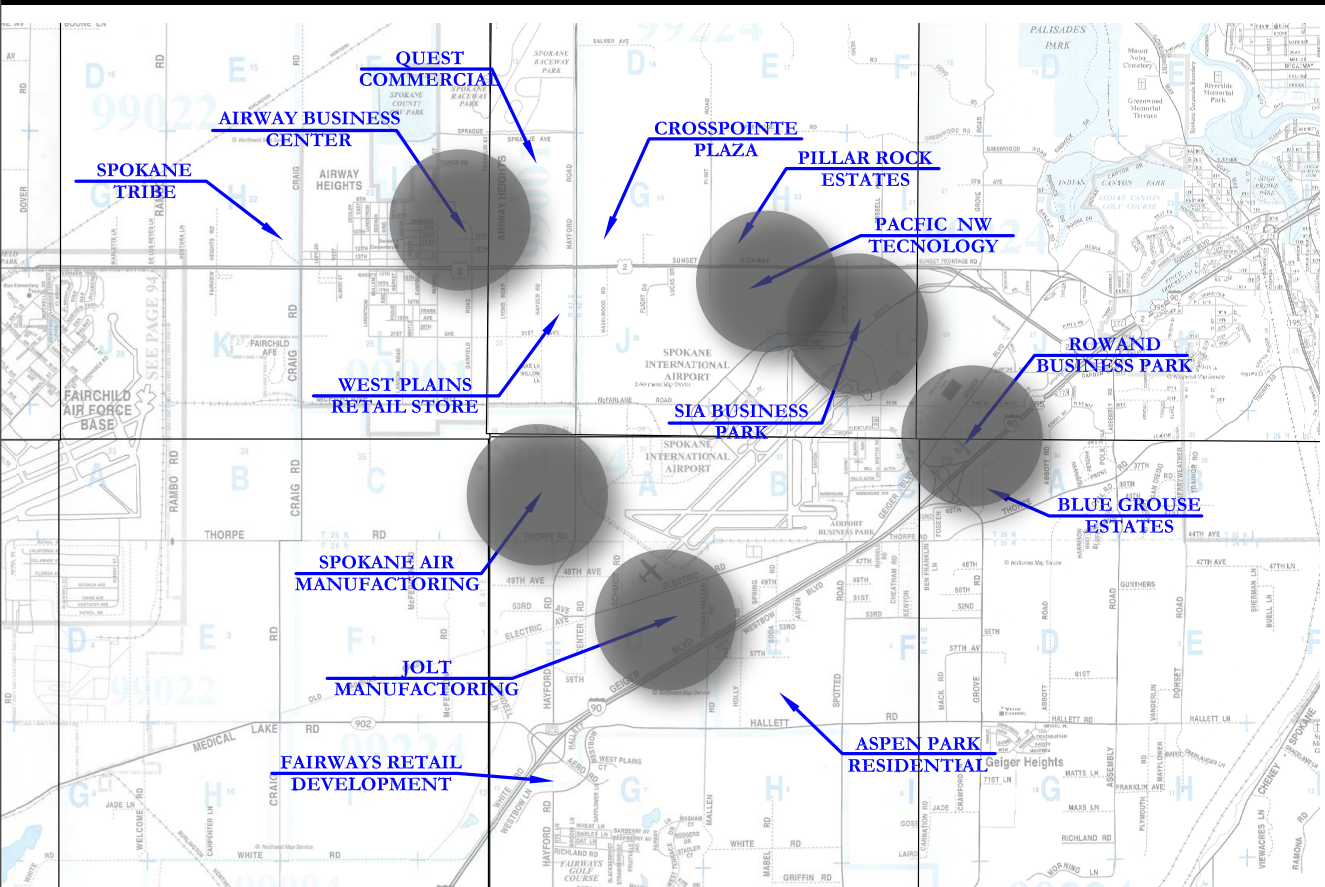
March 21, 2013

Friday, March 22, 2013



# Future Conditions

## Development



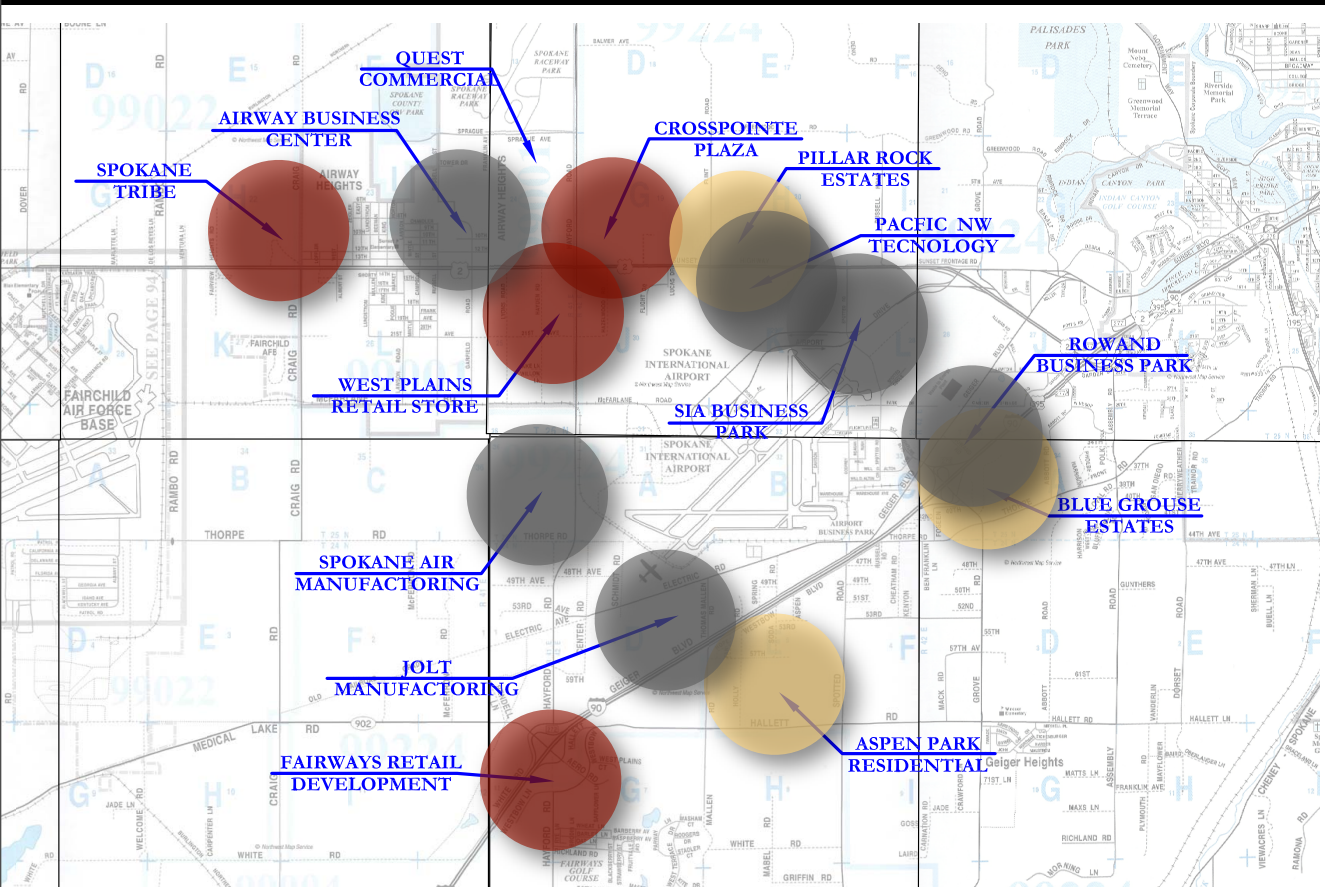
Workshop - From Screenlines to Dreamlines

March 21, 2013

Friday, March 22, 2013

# Future Conditions

## Development



Workshop - From Screenlines to Dreamlines

March 21, 2013

Friday, March 22, 2013

# Future Conditions



**Workshop - From Screenlines to Dreamlines**

March 21, 2013

Friday, March 22, 2013

# Policy Guidance

CWPP

County

Spokane

Airway Heights

Medical Lake

Cheney



**Workshop - From Screenlines to Dreamlines**

*March 21, 2013*

Friday, March 22, 2013



## Activity 1: Goal and Policy Review

The Cities of Spokane, Airway Heights, Cheney, Medical Lake, and Spokane County together with other state and local agencies are working to identify transportation facility needs on the West Plains. The project, funded by a grant from the Washington State Department of Commerce, will inform upcoming transportation planning work on the West Plains. To ensure transportation facilities meet the needs of residents and businesses, we need your help to review existing goals, policies, and recommendations. These goals, policies, and recommendations are important because they will help direct transportation projects throughout the West Plains.

We have provided goals, policies, and recommendations from various studies and plans related to transportation and the West Plains. Please review each, letting us know how important you believe them to be for mobility on the West Plains (**1 = Least Important, 3 = Important, and 5 = Most Important**). Anything missing? Add notes or new items for us to include.

Goals, Policies, and Recommendations	1	2	3	4	5	Notes
<b>Airway Heights Comprehensive Plan</b>						
Make US 2 a traffic corridor that supports the Airway Heights community, accommodates traffic volumes, enhances traffic safety, and makes it attractive to pedestrians.						
Encourage roadway design approaches on US 2 that include structural traffic calming elements, planting trees, or other techniques.						
Pursue ways to more effectively link areas north and south of US 2.						
Maintain adequate rail and highway access to the community's industrial areas.						
Ensure Hayford and Craig roads continue to serve as a north-south link and truck route between I-90, US 2 and SR 902.						
Use public investment along the US 2 corridor to create a strong pedestrian environment.						
<b>Spokane Comprehensive Plan</b>						
Plan for transportation on a regional basis.						
Provide a variety of transportation options, including walking, bicycling, taking the bus, carpooling, and driving private automobiles.						
Build streets with the minimum amount of street width needed to serve the street's purpose and calm traffic.						
Accommodate moving freight and commercial goods in ways that are safe, cost efficient, energy efficient, and environmentally friendly.						
Plan and construct transportation improvements with care, considering natural land forms, geographic, and nature corridors.						
<b>Spokane County Comprehensive Plan</b>						
Provide a safe and efficient system of rural roads.						
Develop and maintain safe and efficient transportation connections between urban population centers.						
Ensure that proposed rural collectors avoid significant natural areas or historic resources where possible.						
Ensure that the transportation system in the rural areas are consistent with their rural/resource character.						
Designate I-90, US 2, and SR 902 as aesthetic corridors to provide a positive image of the Spokane region.						
<b>Spokane Regional Transportation Council: West Plains - Spokane International Airport Study</b>						
Construct a new 3-lane minor arterial south of US 2 along 21st Ave.						
Construct a new transit park and ride facility near the Medical Lake Interchange.						
Develop a separated bike and pedestrian pathway along US 2 on the north and south side of US 2 from the Sunset/Airport Interchange to Fairchild Air Force Base.						
Build sidewalks along existing roadways and in gaps throughout the West Plains study area.						
<b>Washington State Department of Transportation: US 2 Route Development Plan</b>						
Improve the parallel 21st Ave corridor to relieve congestion on US 2.						
Include a separated pedestrian/bicycle pathway in conjunction with development along US 2 corridor.						
Support expansion of existing arterials such as 6th and 12th Avenues from Craig Rd. to Spotted Rd.						
<b>Additional goals, policies, or recommendations you'd add:</b>						

# Exercise 1 - Policy Relevance

Pair up

Review

Rate

Note

Add

Workshop - From Screenlines to Dreamlines

March 21, 2013

Friday, March 22, 2013

## Activity 1: Goal and Policy Review

The Cities of Spokane, Airway Heights, Cheney, Medical Lake, and Spokane County together with other state and local agencies are working to identify transportation facility needs on the West Plains. The project, funded by a grant from the Washington State Department of Commerce, will inform upcoming transportation planning work on the West Plains. To ensure transportation facilities meet the needs of residents and businesses, we need your help to review existing goals, policies, and recommendations. These goals, policies, and recommendations are important because they will help direct transportation projects throughout the West Plains.

We have provided goals, policies, and recommendations from various studies and plans related to transportation and the West Plains. Please review each, letting us know how important you believe them to be for mobility on the West Plains (**1 = Least Important, 3 = Important, and 5 = Most Important**). Anything missing? Add notes or new items for us to include.

Goals, Policies, and Recommendations	1	2	3	4	5	Notes
<b>Airway Heights Comprehensive Plan</b>						
Make US 2 a traffic corridor that supports the Airway Heights community, accommodates traffic volumes, enhances traffic safety, and makes it attractive to pedestrians.						
Encourage roadway design approaches on US 2 that include structural traffic calming elements, planting trees, or other techniques.						
Pursue ways to more effectively link areas north and south of US 2.						
Maintain adequate rail and highway access to the community's industrial areas.						
Ensure Hayford and Craig roads continue to serve as a north-south link and truck route between I-90, US 2 and SR 902.						
Use public investment along the US 2 corridor to create a strong pedestrian environment.						
<b>Spokane Comprehensive Plan</b>						
Plan for transportation on a regional basis.						
Provide a variety of transportation options, including walking, bicycling, taking the bus, carpooling, and driving private automobiles.						
Build streets with the minimum amount of street width needed to serve the street's purpose and calm traffic.						
Accommodate moving freight and commercial goods in ways that are safe, cost efficient, energy efficient, and environmentally friendly.						
Plan and construct transportation improvements with care, considering natural land forms, geographic, and nature corridors.						
<b>Spokane County Comprehensive Plan</b>						
Provide a safe and efficient system of rural roads.						
Develop and maintain safe and efficient transportation connections between urban population centers.						
Ensure that proposed rural collectors avoid significant natural areas or historic resources where possible.						
Ensure that the transportation system in the rural areas are consistent with their rural/resource character.						
Designate I-90, US 2, and SR 902 as aesthetic corridors to provide a positive image of the Spokane region.						
<b>Spokane Regional Transportation Council: West Plains - Spokane International Airport Study</b>						
Construct a new 3-lane minor arterial south of US 2 along 21st Ave.						
Construct a new transit park and ride facility near the Medical Lake interchange.						
Develop a separated bike and pedestrian pathway along US 2 on the north and south side of US 2 from the Sunset/Airport Interchange to Fairchild Air Force Base.						
Build sidewalks along existing roadways and in gaps throughout the West Plains study area.						
<b>Washington State Department of Transportation: US 2 Route Development Plan</b>						
Improve the parallel 21st Ave corridor to relieve congestion on US 2.						
Include a separated pedestrian/bicycle pathway in conjunction with development along US 2 corridor.						
Support expansion of existing arterials such as 6th and 12th Avenues from 12th to 14th St.						
<b>Additional goals, policies, or recommendations you'd add:</b>						

# Exercise 1 - Policy Relevance

Pair up  
Review  
Rate  
Note  
Add

## Workshop - From Screenlines to Dreamlines

March 21, 2013

Friday, March 22, 2013

## Activity 1: Goal and Policy Review

The Cities of Spokane, Airway Heights, Cheney, Medical Lake, and Spokane County together with other state and local agencies are working to identify transportation facility needs on the West Plains. The project, funded by a grant from the Washington State Department of Commerce, will inform upcoming transportation planning work on the West Plains. To ensure transportation facilities meet the needs of residents and businesses, we need your help to review existing goals, policies, and recommendations. These goals, policies, and recommendations are important because they will help direct transportation projects throughout the West Plains.

We have provided goals, policies, and recommendations from various studies and plans related to transportation and the West Plains. Please review each, letting us know how important you believe them to be for mobility on the West Plains (**1 = Least Important, 3 = Important, and 5 = Most Important**). Anything missing? Add notes or new items for us to include.

Goals, Policies, and Recommendations	1	2	3	4	5	Notes
<b>Airway Heights Comprehensive Plan</b>						
Make US 2 a traffic corridor that supports the Airway Heights community, accommodates traffic volumes, enhances traffic safety, and makes it attractive to pedestrians.						
Encourage roadway design approaches on US 2 that include structural traffic calming elements, planting trees, or other techniques.						
Pursue ways to more effectively link areas north and south of US 2.						
Maintain adequate rail and highway access to the community's industrial areas.						
Ensure Hayford and Craig roads continue to serve as a north-south link and truck route between I-90, US 2 and SR 902.						
Use public investment along the US 2 corridor to create a strong pedestrian environment.						
<b>Spokane Comprehensive Plan</b>						
Plan for transportation on a regional basis.						
Provide a variety of transportation options, including walking, bicycling, taking the bus, carpooling, and driving private automobiles.						
Build streets with the minimum amount of street width needed to serve the street's purpose and calm traffic.						
Accommodate moving freight and commercial goods in ways that are safe, cost efficient, energy efficient, and environmentally friendly.						
Plan and construct transportation improvements with care, considering natural land forms, geographic, and nature corridors.						
<b>Spokane County Comprehensive Plan</b>						
Provide a safe and efficient system of rural roads.						
Develop and maintain safe and efficient transportation connections between urban population centers.						
Ensure that proposed rural collectors avoid significant natural areas or historic resources where possible.						
Ensure that the transportation system in the rural areas are consistent with their rural/resource character.						
Designate I-90, US 2, and SR 902 as aesthetic corridors to provide a positive image of the Spokane region.						
<b>Spokane Regional Transportation Council: West Plains - Spokane International Airport Study</b>						
Construct a new 3-lane minor arterial south of US 2 along 21st Ave.						
Construct a new transit park and ride facility near the Medical Lake Interchange.						
Develop a separated bike and pedestrian pathway along US 2 on the north and south side of US 2 from the Sunset/Airport Interchange to Fairchild Air Force Base.						
Build sidewalks along existing roadways and in gaps throughout the West Plains study area.						
<b>Washington State Department of Transportation: US 2 Route Development Plan</b>						
Improve the parallel 21st Ave corridor to relieve congestion on US 2.						
Include a separated pedestrian/bicycle pathway in conjunction with development along US 2 corridor.						
Support expansion of existing arterials such as 6th and 12th Avenues from Craig Rd. to Spotted Rd.						
<b>Additional goals, policies, or recommendations you'd add:</b>						

# Exercise 1 - Policy Relevance

Pair up

Review

**Rate**

Note

Add

Workshop - From Screenlines to Dreamlines

March 21, 2013

Friday, March 22, 2013

## Activity 1: Goal and Policy Review

The Cities of Spokane, Airway Heights, Cheney, Medical Lake, and Spokane County together with other state and local agencies are working to identify transportation facility needs on the West Plains. The project, funded by a grant from the Washington State Department of Commerce, will inform upcoming transportation planning work on the West Plains. To ensure transportation facilities meet the needs of residents and businesses, we need your help to review existing goals, policies, and recommendations. These goals, policies, and recommendations are important because they will help direct transportation projects throughout the West Plains.

We have provided goals, policies, and recommendations from various studies and plans related to transportation and the West Plains. Please review each, letting us know how important you believe them to be for mobility on the West Plains (**1 = Least Important, 3 = Important, and 5 = Most Important**). Anything missing? Add notes or new items for us to include.

Goals, Policies, and Recommendations	1	2	3	4	5	Notes
<b>Airway Heights Comprehensive Plan</b>						
Make US 2 a traffic corridor that supports the Airway Heights community, accommodates traffic volumes, enhances traffic safety, and makes it attractive to pedestrians.						
Encourage roadway design approaches on US 2 that include structural traffic calming elements, planting trees, or other techniques.						
Pursue ways to more effectively link areas north and south of US 2.						
Maintain adequate rail and highway access to the community's industrial areas.						
Ensure Hayford and Craig roads continue to serve as a north-south link and truck route between I-90, US 2 and SR 902.						
Use public investment along the US 2 corridor to create a strong pedestrian environment.						
<b>Spokane Comprehensive Plan</b>						
Plan for transportation on a regional basis.						
Provide a variety of transportation options, including walking, bicycling, taking the bus, carpooling, and driving private automobiles.						
Build streets with the minimum amount of street width needed to serve the street's purpose and calm traffic.						
Accommodate moving freight and commercial goods in ways that are safe, cost efficient, energy efficient, and environmentally friendly.						
Plan and construct transportation improvements with care, considering natural land forms, geographic, and nature corridors.						
<b>Spokane County Comprehensive Plan</b>						
Provide a safe and efficient system of rural roads.						
Develop and maintain safe and efficient transportation connections between urban population centers.						
Ensure that proposed rural collectors avoid significant natural areas or historic resources where possible.						
Ensure that the transportation system in the rural areas are consistent with their rural/resource character.						
Designate I-90, US 2, and SR 902 as aesthetic corridors to provide a positive image of the Spokane region.						
<b>Spokane Regional Transportation Council: West Plains - Spokane International Airport Study</b>						
Construct a new 3-lane minor arterial south of US 2 along 21st Ave.						
Construct a new transit park and ride facility near the Medical Lake Interchange.						
Develop a separated bike and pedestrian pathway along US 2 on the north and south side of US 2 from the Sunset/Airport Interchange to Fairchild Air Force Base.						
Build sidewalks along existing roadways and in gaps throughout the West Plains study area.						
<b>Washington State Department of Transportation: US 2 Route Development Plan</b>						
Improve the parallel 21st Ave corridor to relieve congestion on US 2.						
Include a separated pedestrian/bicycle pathway in conjunction with development along US 2 corridor.						
Support expansion of existing arterials such as 6th and 12th Avenues from Craig Rd. to Spotted Rd.						
<b>Additional goals, policies, or recommendations you'd add:</b>						

# Exercise 1 - Policy Relevance

Pair up  
Review  
Rate  
**Note**  
Add

## Workshop - From Screenlines to Dreamlines

March 21, 2013

Friday, March 22, 2013



## Activity 1: Goal and Policy Review

The Cities of Spokane, Airway Heights, Cheney, Medical Lake, and Spokane County together with other state and local agencies are working to identify transportation facility needs on the West Plains. The project, funded by a grant from the Washington State Department of Commerce, will inform upcoming transportation planning work on the West Plains. To ensure transportation facilities meet the needs of residents and businesses, we need your help to review existing goals, policies, and recommendations. These goals, policies, and recommendations are important because they will help direct transportation projects throughout the West Plains.

We have provided goals, policies, and recommendations from various studies and plans related to transportation and the West Plains. Please review each, letting us know how important you believe them to be for mobility on the West Plains (**1 = Least Important, 3 = Important, and 5 = Most Important**). Anything missing? Add notes or new items for us to include.

Goals, Policies, and Recommendations	1	2	3	4	5	Notes
<b>Airway Heights Comprehensive Plan</b>						
Make US 2 a traffic corridor that supports the Airway Heights community, accommodates traffic volumes, enhances traffic safety, and makes it attractive to pedestrians.						
Encourage roadway design approaches on US 2 that include structural traffic calming elements, planting trees, or other techniques.						
Pursue ways to more effectively link areas north and south of US 2.						
Maintain adequate rail and highway access to the community's industrial areas.						
Ensure Hayford and Craig roads continue to serve as a north-south link and truck route between I-90, US 2 and SR 902.						
Use public investment along the US 2 corridor to create a strong pedestrian environment.						
<b>Spokane Comprehensive Plan</b>						
Plan for transportation on a regional basis.						
Provide a variety of transportation options, including walking, bicycling, taking the bus, carpooling, and driving private automobiles.						
Build streets with the minimum amount of street width needed to serve the street's purpose and calm traffic.						
Accommodate moving freight and commercial goods in ways that are safe, cost efficient, energy efficient, and environmentally friendly.						
Plan and construct transportation improvements with care, considering natural land forms, geographic, and nature corridors.						
<b>Spokane County Comprehensive Plan</b>						
Provide a safe and efficient system of rural roads.						
Develop and maintain safe and efficient transportation connections between urban population centers.						
Ensure that proposed rural collectors avoid significant natural areas or historic resources where possible.						
Ensure that the transportation system in the rural areas are consistent with their rural/resource character.						
Designate I-90, US 2, and SR 902 as aesthetic corridors to provide a positive image of the Spokane region.						
<b>Spokane Regional Transportation Council: West Plains - Spokane International Airport Study</b>						
Construct a new 3-lane minor arterial south of US 2 along 21st Ave.						
Construct a new transit park and ride facility near the Medical Lake Interchange.						
Develop a separated bike and pedestrian pathway along US 2 on the north and south side of US 2 from the Sunset/Airport Interchange to Fairchild Air Force Base.						
Build sidewalks along existing roadways and in gaps throughout the West Plains study area.						
<b>Washington State Department of Transportation: US 2 Route Development Plan</b>						
Improve the parallel 21st Ave corridor to relieve congestion on US 2.						
Include a separated pedestrian/bicycle pathway in conjunction with development along US 2 corridor.						
Support expansion of existing arterials such as 6th and 12th Avenues from Craig Rd. to Spotted Rd.						
<b>Additional goals, policies, or recommendations you'd add:</b>						

# Exercise 1 - Policy Relevance

Pair up  
Review  
Rate  
Note  
Add

## Workshop - From Screenlines to Dreamlines

March 21, 2013

Friday, March 22, 2013

## Activity 1: Goal and Policy Review

The Cities of Spokane, Airway Heights, Cheney, Medical Lake, and Spokane County together with other state and local agencies are working to identify transportation facility needs on the West Plains. The project, funded by a grant from the Washington State Department of Commerce, will inform upcoming transportation planning work on the West Plains. To ensure transportation facilities meet the needs of residents and businesses, we need your help to review existing goals, policies, and recommendations. These goals, policies, and recommendations are important because they will help direct transportation projects throughout the West Plains.

We have provided goals, policies, and recommendations from various studies and plans related to transportation and the West Plains. Please review each, letting us know how important you believe them to be for mobility on the West Plains (**1 = Least Important**, **5 = Most Important**). No other action is required or suggested for you to include.

Goals, Policies, and Recommendations	1	2	3	4	5	Notes
<b>Airway Heights Comprehensive Plan</b>						
Make US 2 a traffic corridor that supports the Airway Heights community, accommodates traffic volumes, enhances traffic safety, and makes it attractive to pedestrians.						
Encourage roadway design approaches on US 2 that include structural traffic calming elements, planting trees, or other techniques.						
Pursue ways to more effectively link areas north and south of US 2.						
Maintain adequate rail and highway access to the community's industrial areas.						
Ensure Hayford and Craig roads continue to serve as a north-south link and truck route between I-90, US 2 and SR 902.						
Use public investment along the US 2 corridor to create a strong pedestrian environment.						
<b>Spokane Comprehensive Plan</b>						
Plan for transportation on a regional basis.						
Provide a variety of transportation options, including walking, bicycling, taking the bus, carpooling, and driving private automobiles.						
Build streets with the minimum amount of street width needed to serve the street's purpose and calm traffic.						
Accommodate moving freight and commercial goods in ways that are safe, cost efficient, energy efficient, and environmentally friendly.						
Plan and construct transportation improvements with care, considering natural land forms, geographic, and nature corridors.						
<b>Spokane County Comprehensive Plan</b>						
Provide a safe and efficient system of rural roads.						
Develop and maintain safe and efficient transportation connections between urban population centers.						
Ensure that proposed rural collectors avoid significant natural areas or historic resources where possible.						
Ensure that the transportation system in the rural areas are consistent with their rural/resource character.						
Designate I-90, US 2, and SR 902 as aesthetic corridors to provide a positive image of the Spokane region.						
<b>Spokane Regional Transportation Council: West Plains - Spokane International Airport Study</b>						
Construct a new 3-lane minor arterial south of US 2 along 21st Ave.						
Construct a new transit park and ride facility near the Medical Lake Interchange.						
Develop a separated bike and pedestrian pathway along US 2 on the north and south side of US 2 from the Sunset/Airport Interchange to Rainchild Air Force Base.						
Build sidewalks along existing roadways and in gaps throughout the West Plains study area.						
<b>Washington State Department of Transportation: US 2 Route Development Plan</b>						
Improve the parallel 21st Ave corridor to relieve congestion on US 2.						
Include a separated pedestrian/bicycle pathway in conjunction with development along US 2 corridor.						
Support expansion of existing arterials such as 6th and 12th Avenues from Craig Rd. to Spotted Rd.						
<b>Additional goals, policies, or recommendations you'd add:</b>						

# Exercise 1 - Policy Relevance

GO!

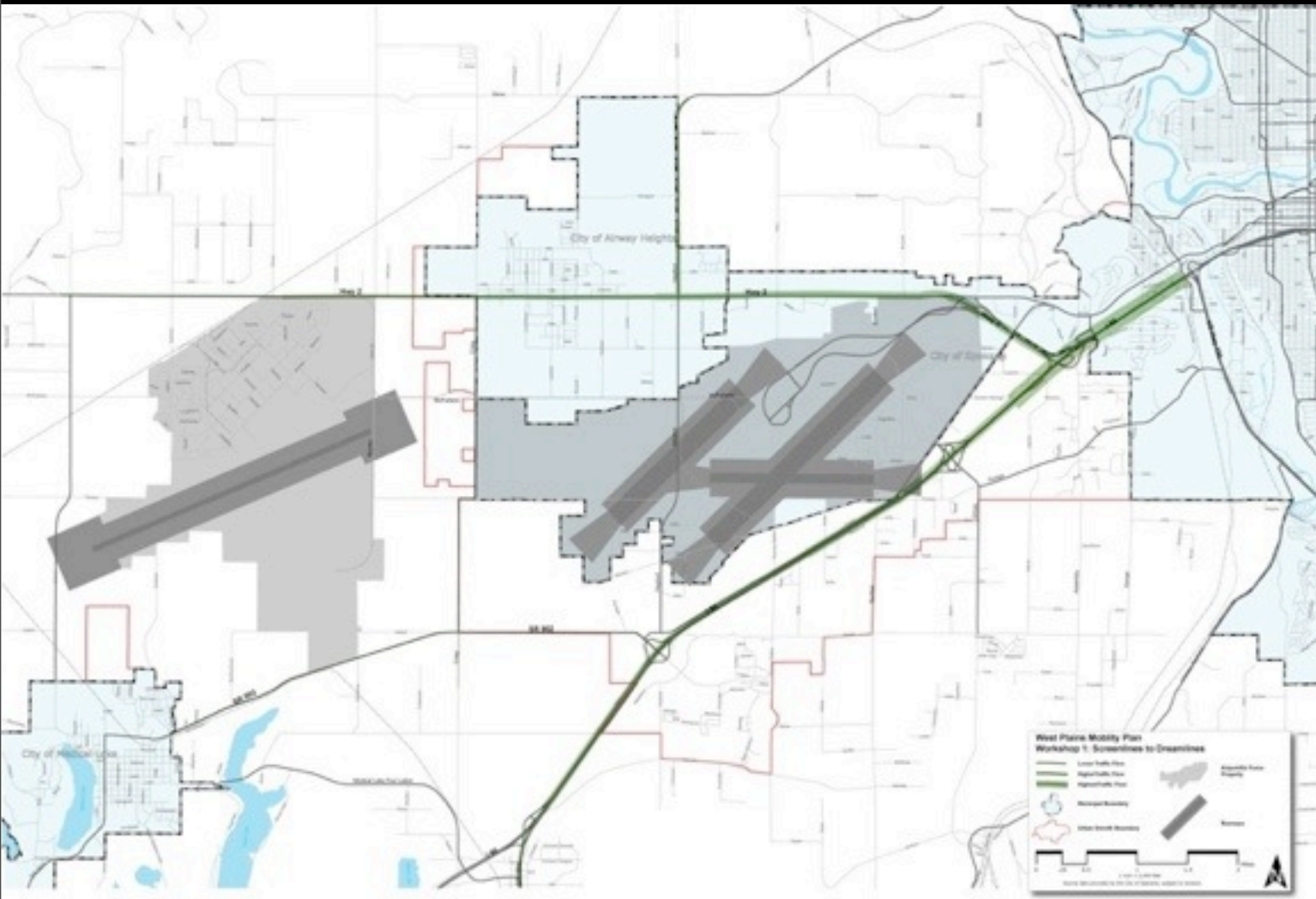
20 minutes

## Workshop - From Screenlines to Dreamlines

March 21, 2013

Friday, March 22, 2013

# Exercise 2 - Dreamlines

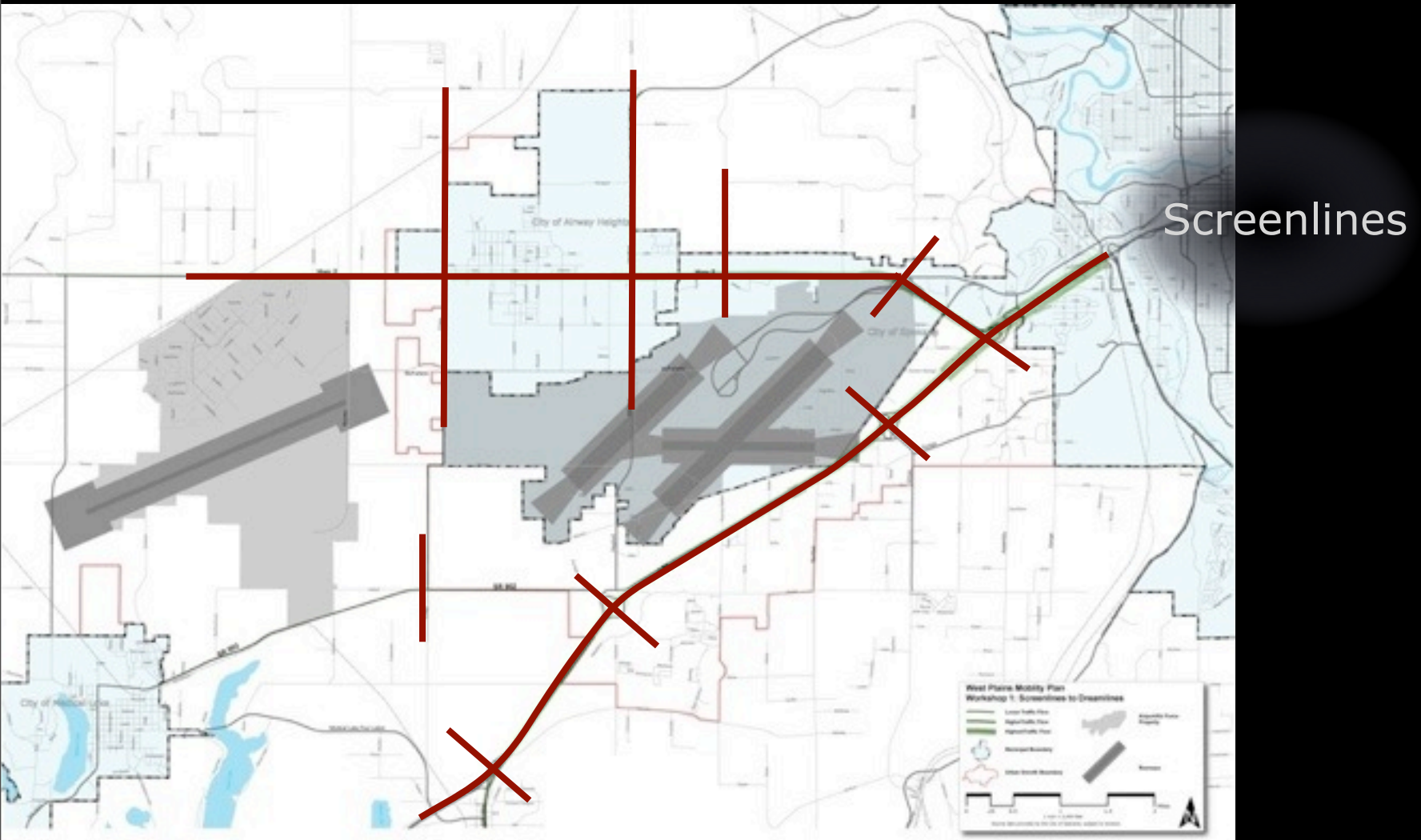


**Workshop - From Screenlines to Dreamlines**

*March 21, 2013*

Friday, March 22, 2013

# Exercise 2 - Dreamlines



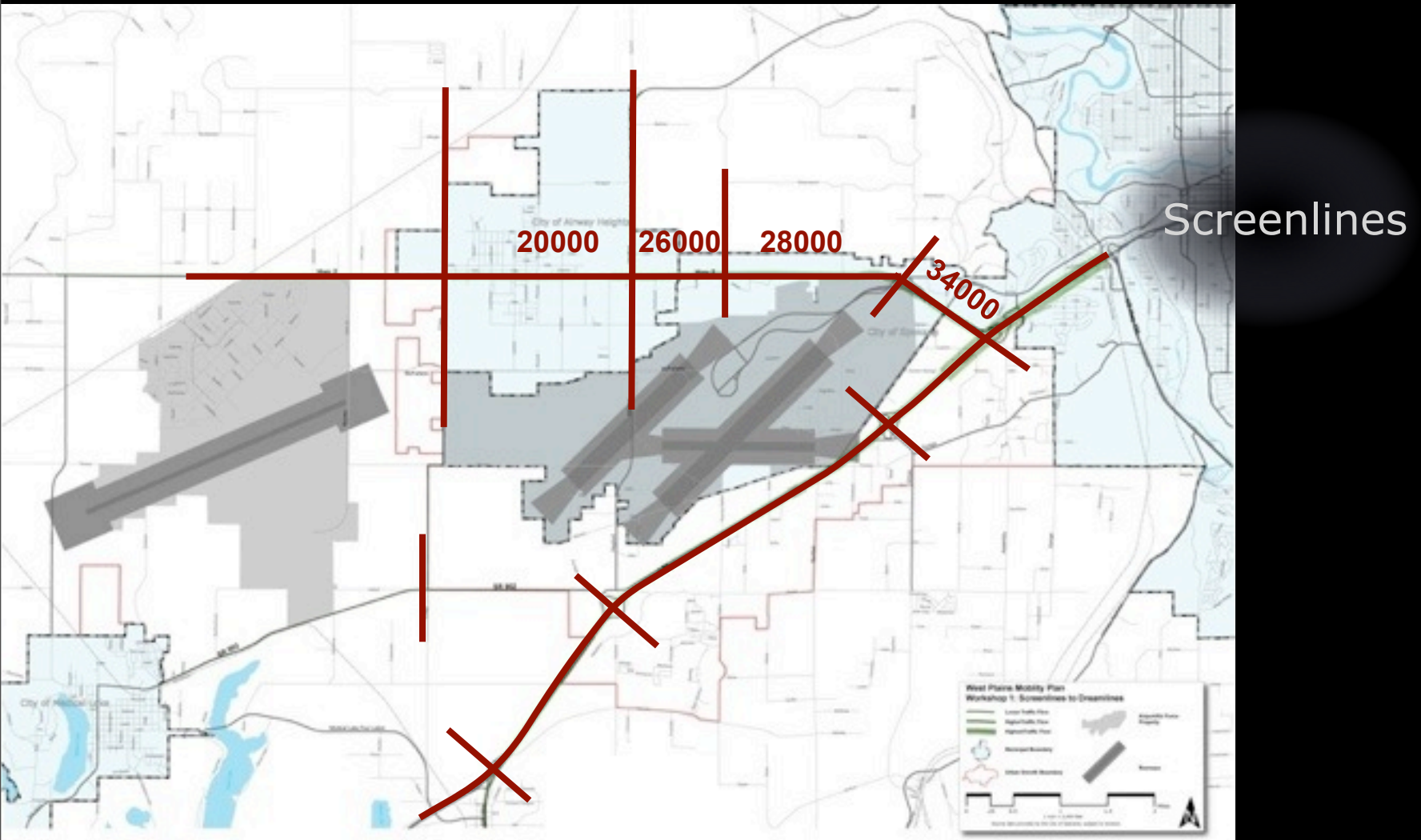
**Workshop - From Screenlines to Dreamlines**

*March 21, 2013*

Friday, March 22, 2013



# Exercise 2 - Dreamlines

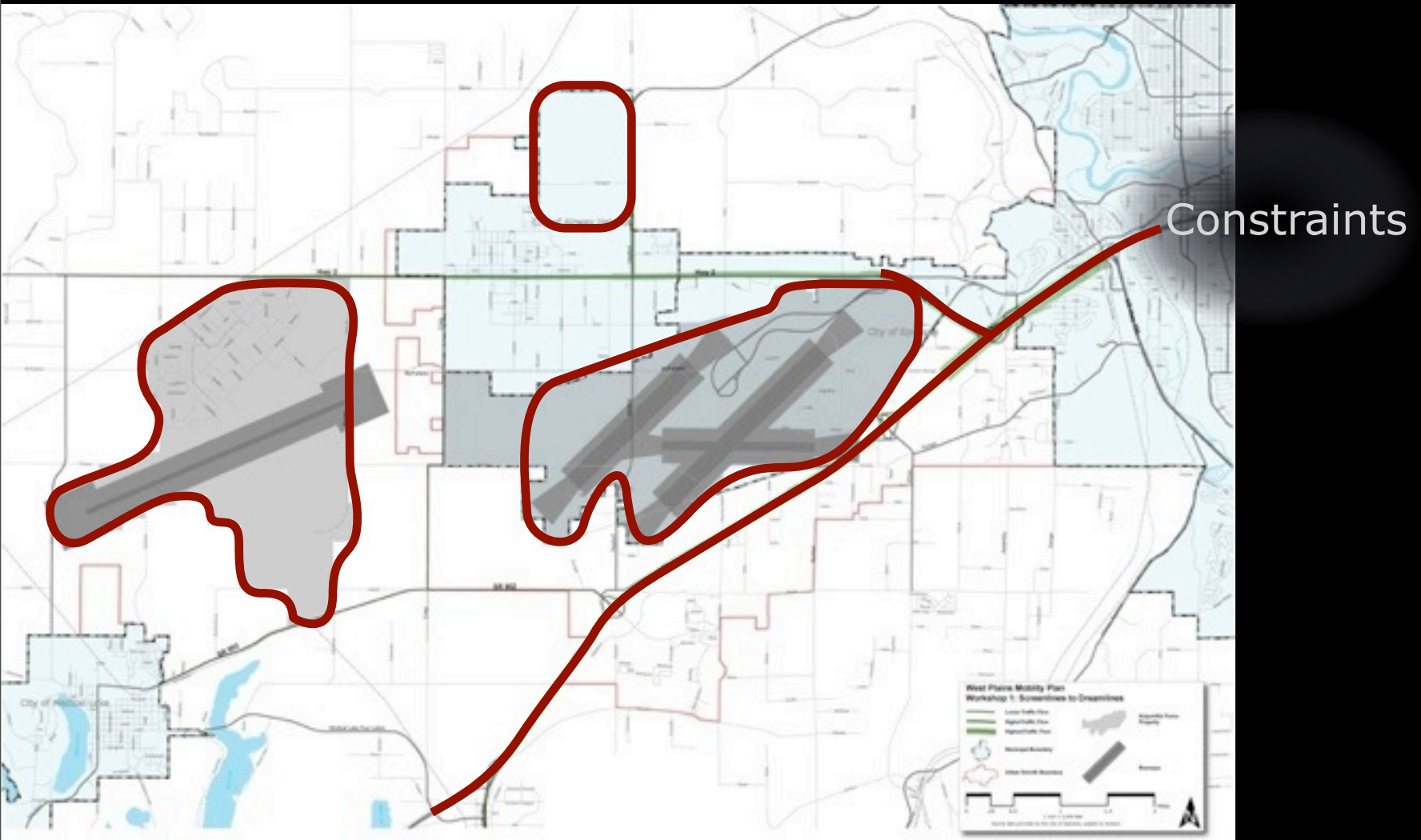


**Workshop - From Screenlines to Dreamlines**

*March 21, 2013*

Friday, March 22, 2013

# Exercise 2 - Dreamlines

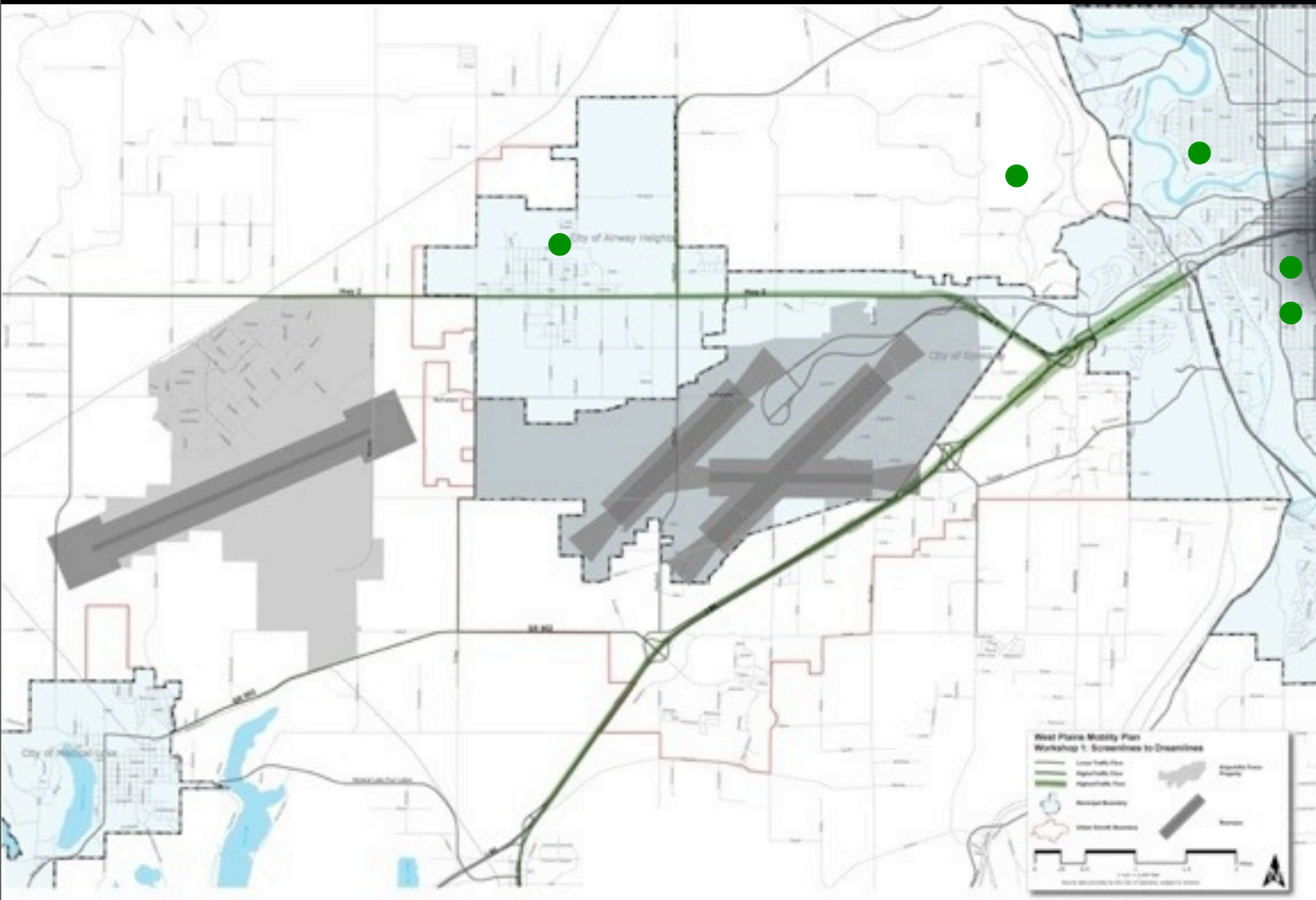


**Workshop - From Screenlines to Dreamlines**

*March 21, 2013*

Friday, March 22, 2013

## Exercise 2 - Dreamlines



# Origins

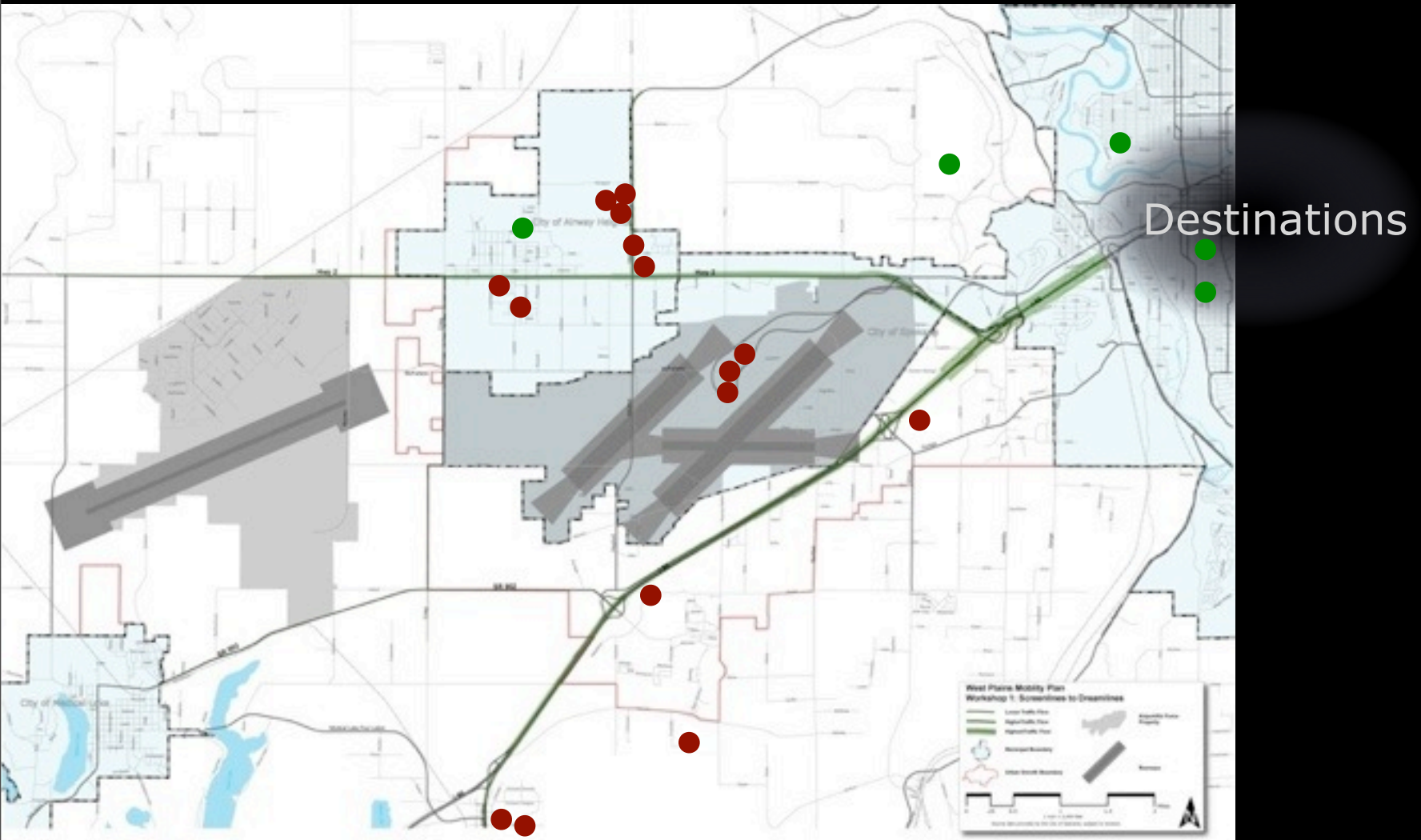
# Workshop - From Screenlines to Dreamlines

March 21, 2013

Friday, March 22, 2013



# Exercise 2 - Dreamlines



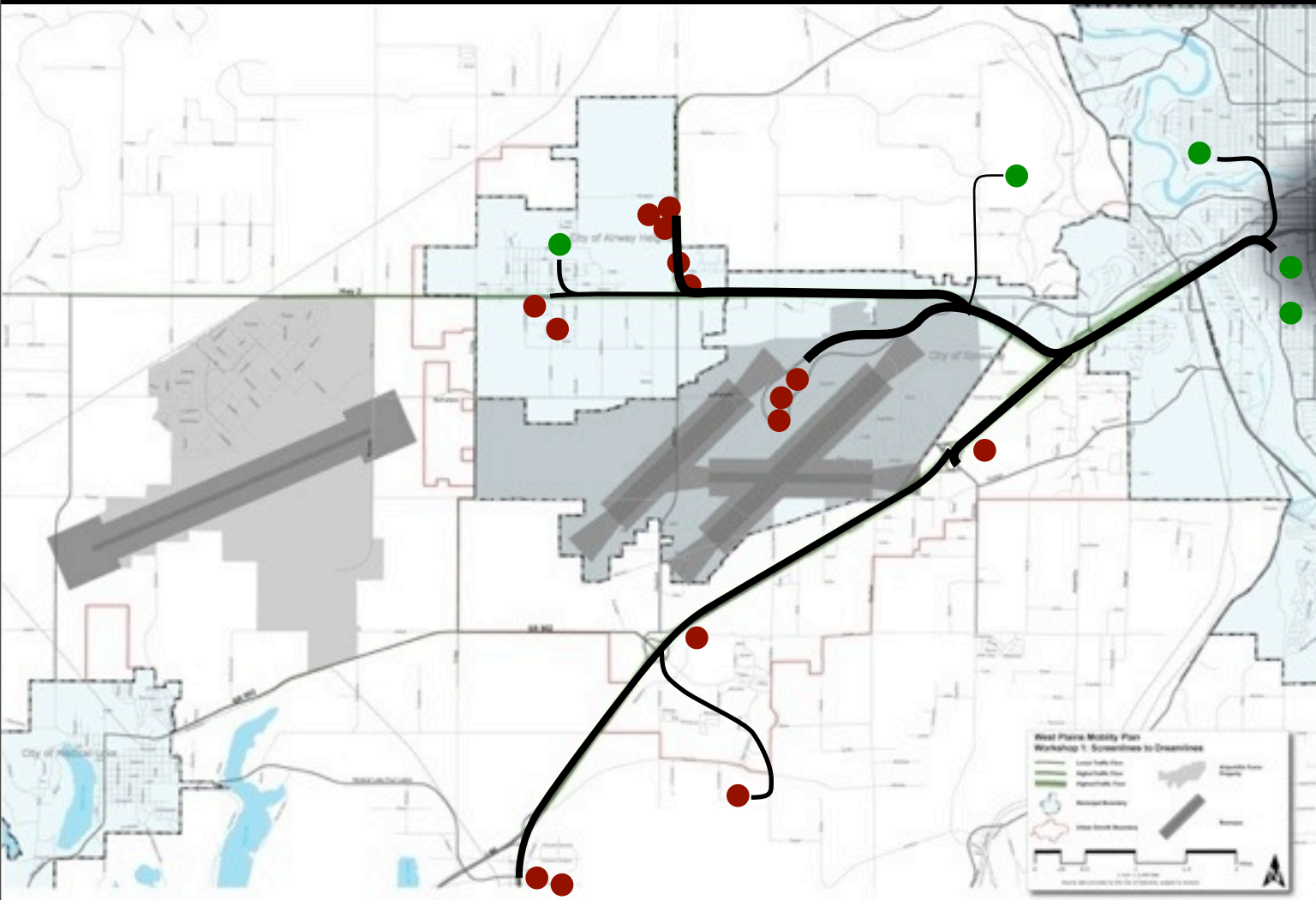
**Workshop - From Screenlines to Dreamlines**

*March 21, 2013*

Friday, March 22, 2013



# Exercise 2 - Dreamlines



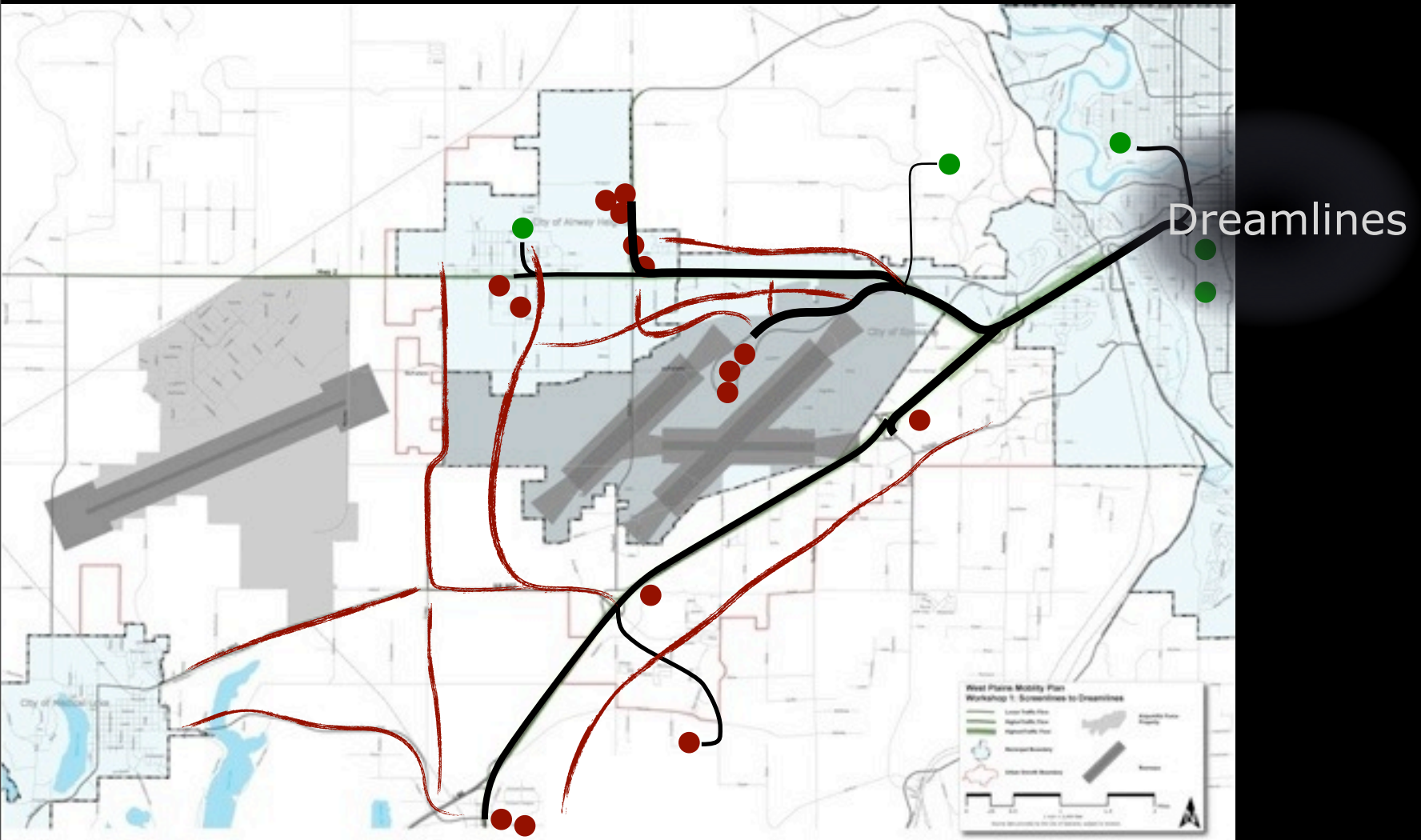
Today's

**Workshop - From Screenlines to Dreamlines**

March 21, 2013

Friday, March 22, 2013

# Exercise 2 - Dreamlines



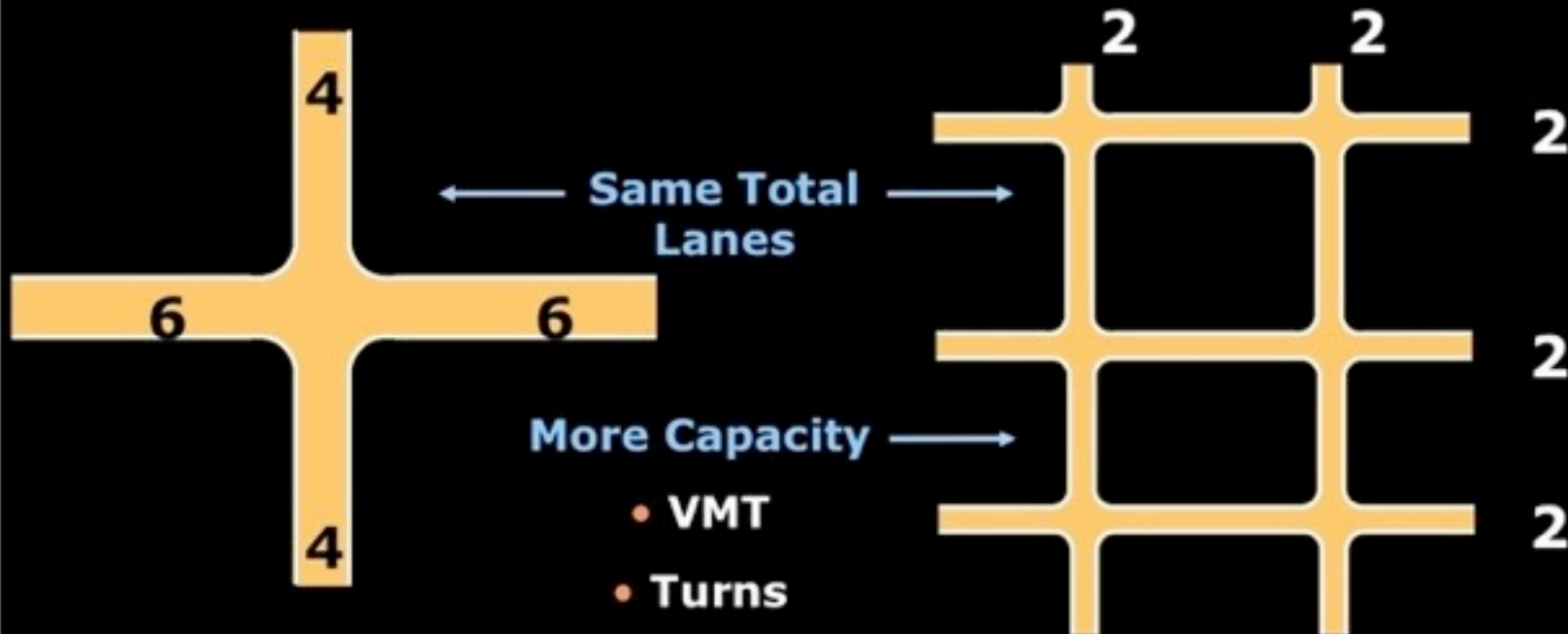
**Workshop - From Screenlines to Dreamlines**

March 21, 2013

Friday, March 22, 2013

# Exercise 2 - Dreamlines

Capacity options

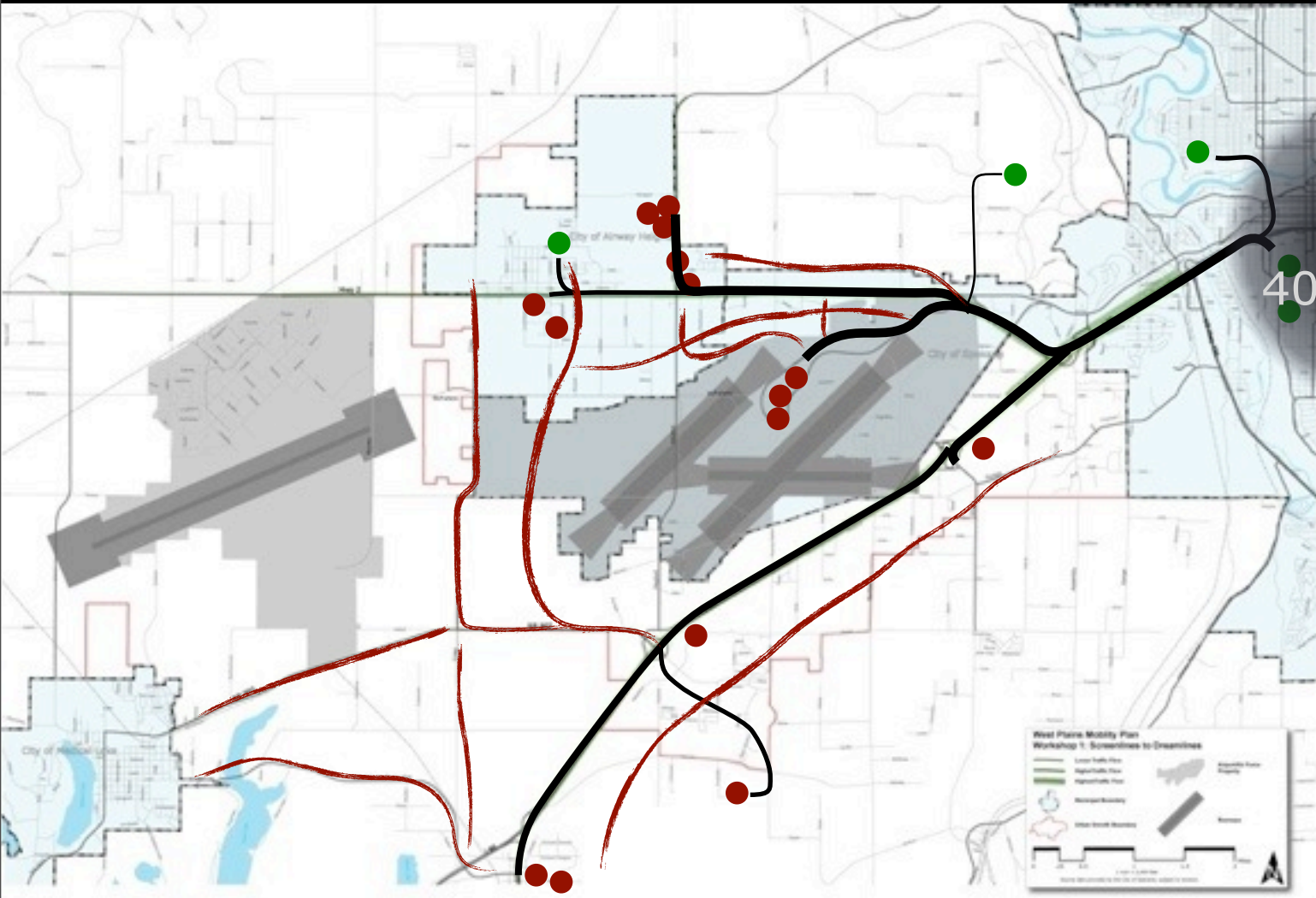


**Workshop - From Screenlines to Dreamlines**

March 21, 2013

Friday, March 22, 2013

## Exercise 2 - Dreamlines



GO!

40 minutes

# Workshop - From Screenlines to Dreamlines

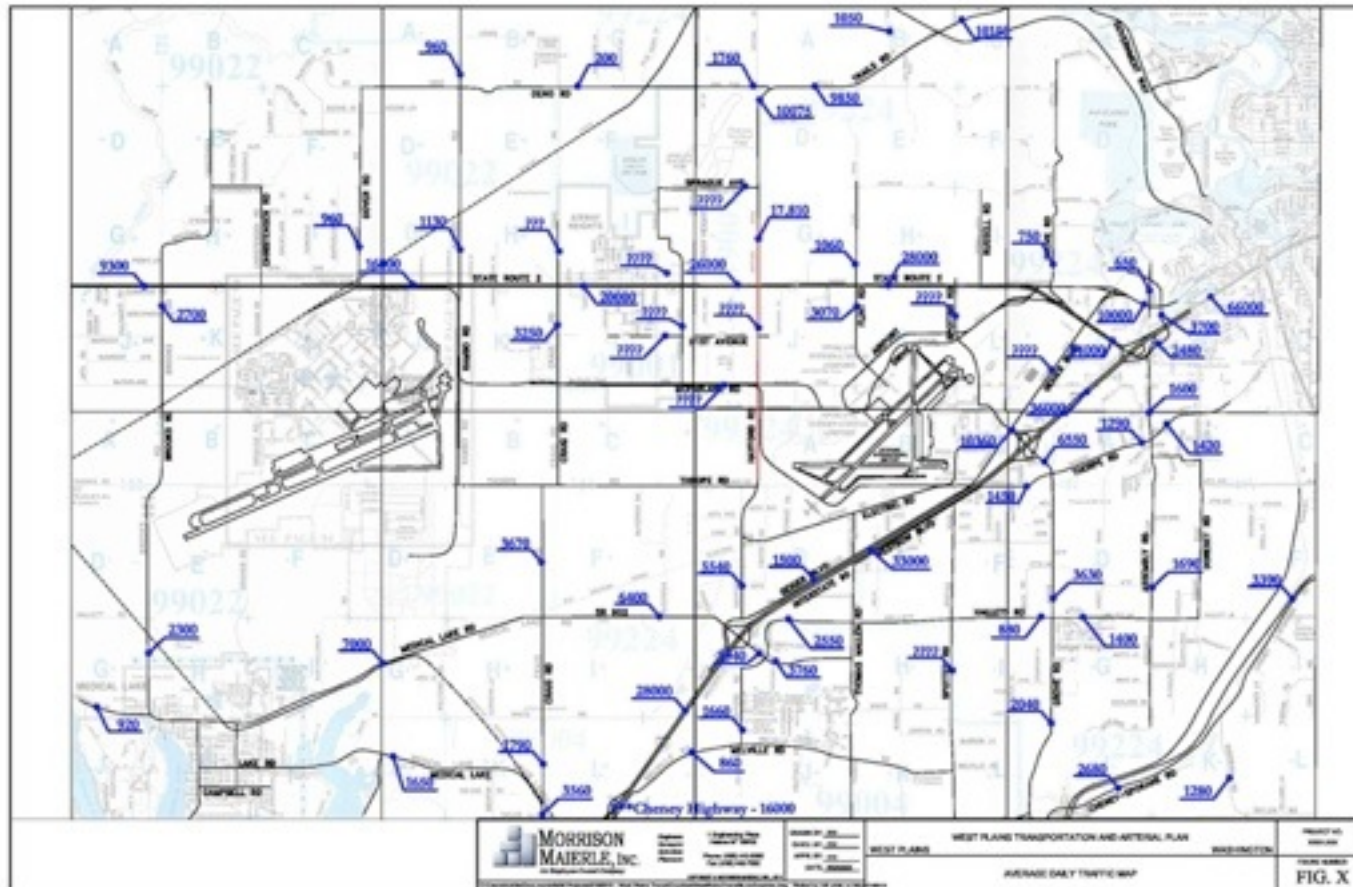
March 21, 2013

Friday, March 22, 2013

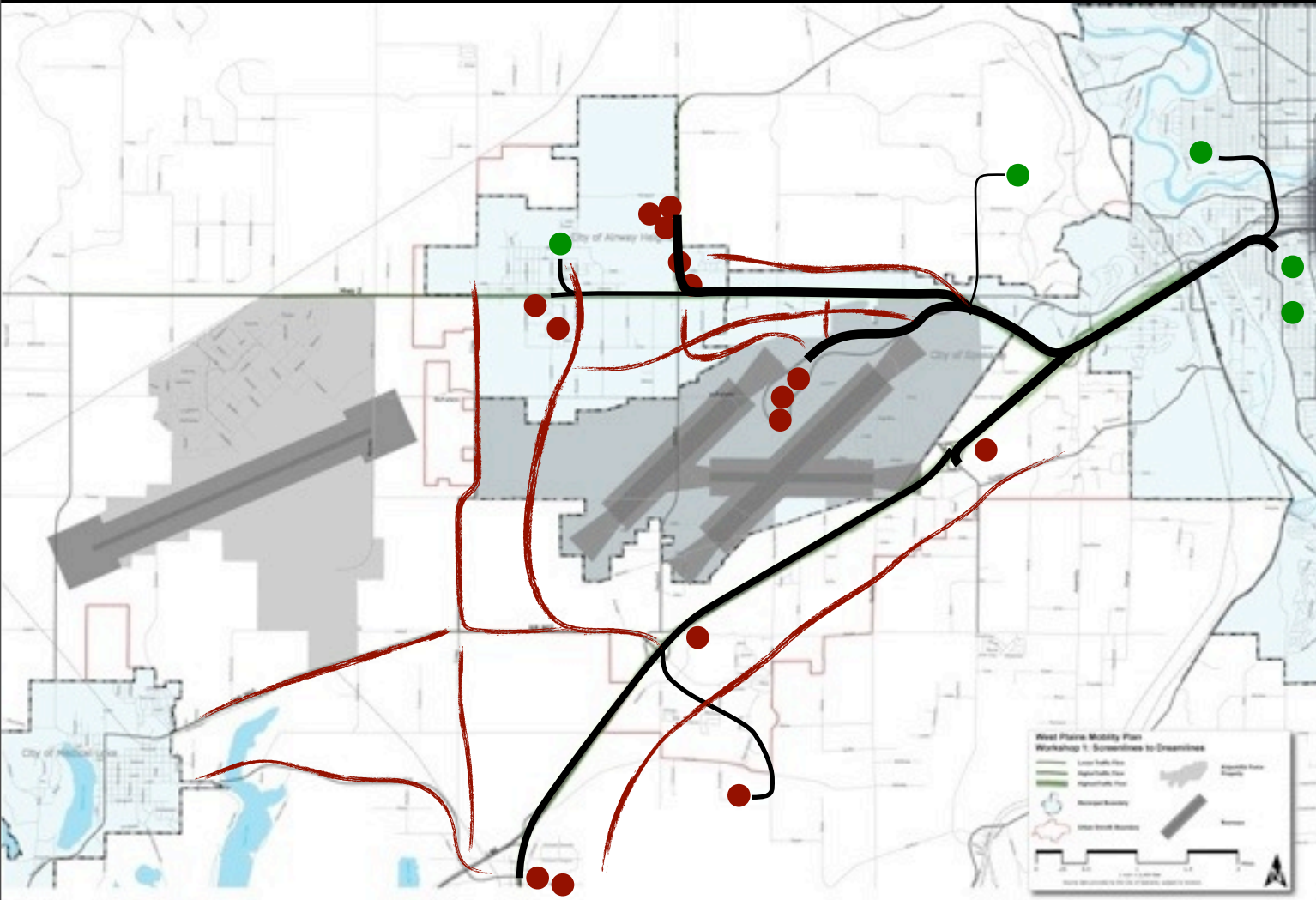


# Existing Conditions

# Traffic volumes



# Exercise 2 - Dreamlines



Report

**Workshop - From Screenlines to Dreamlines**

March 21, 2013

Friday, March 22, 2013

# Next Steps

Workshop May

June roll-out

Comprehensive plans

**Workshop - From Screenlines to Dreamlines**

*March 21, 2013*

Friday, March 22, 2013

# Thank you!

Kathleen Weinand, AICP  
*City of Spokane*  
509-625-6146

[kweinand@spokanecity.org](mailto:kweinand@spokanecity.org)



**Workshop - From Screenlines to Dreamlines**

*March 21, 2013*

Friday, March 22, 2013