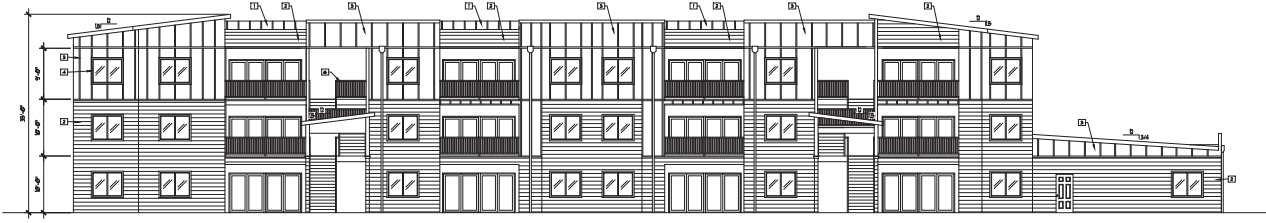


- EXTERIOR MATERIALS**
- 1 METAL CLAD (SPECIALLY FINISHED)
 - 2 EXTERIOR BRICK
 - 3 METAL CLAD (SPECIAL FINISH)
 - 4 METAL CLAD (SPECIAL FINISH)
 - 5 METAL CLAD (SPECIAL FINISH)
 - 6 METAL CLAD (SPECIAL FINISH)
 - 7 METAL CLAD (SPECIAL FINISH)
 - 8 METAL CLAD (SPECIAL FINISH)
 - 9 METAL CLAD (SPECIAL FINISH)
 - 10 METAL CLAD (SPECIAL FINISH)
 - 11 METAL CLAD (SPECIAL FINISH)
 - 12 METAL CLAD (SPECIAL FINISH)
 - 13 METAL CLAD (SPECIAL FINISH)
 - 14 METAL CLAD (SPECIAL FINISH)
 - 15 METAL CLAD (SPECIAL FINISH)
 - 16 METAL CLAD (SPECIAL FINISH)
 - 17 METAL CLAD (SPECIAL FINISH)
 - 18 METAL CLAD (SPECIAL FINISH)
 - 19 METAL CLAD (SPECIAL FINISH)
 - 20 METAL CLAD (SPECIAL FINISH)
 - 21 METAL CLAD (SPECIAL FINISH)
 - 22 METAL CLAD (SPECIAL FINISH)
 - 23 METAL CLAD (SPECIAL FINISH)
 - 24 METAL CLAD (SPECIAL FINISH)
 - 25 METAL CLAD (SPECIAL FINISH)
 - 26 METAL CLAD (SPECIAL FINISH)
 - 27 METAL CLAD (SPECIAL FINISH)
 - 28 METAL CLAD (SPECIAL FINISH)
 - 29 METAL CLAD (SPECIAL FINISH)
 - 30 METAL CLAD (SPECIAL FINISH)
 - 31 METAL CLAD (SPECIAL FINISH)
 - 32 METAL CLAD (SPECIAL FINISH)
 - 33 METAL CLAD (SPECIAL FINISH)
 - 34 METAL CLAD (SPECIAL FINISH)
 - 35 METAL CLAD (SPECIAL FINISH)
 - 36 METAL CLAD (SPECIAL FINISH)
 - 37 METAL CLAD (SPECIAL FINISH)
 - 38 METAL CLAD (SPECIAL FINISH)
 - 39 METAL CLAD (SPECIAL FINISH)
 - 40 METAL CLAD (SPECIAL FINISH)
 - 41 METAL CLAD (SPECIAL FINISH)
 - 42 METAL CLAD (SPECIAL FINISH)
 - 43 METAL CLAD (SPECIAL FINISH)
 - 44 METAL CLAD (SPECIAL FINISH)
 - 45 METAL CLAD (SPECIAL FINISH)
 - 46 METAL CLAD (SPECIAL FINISH)
 - 47 METAL CLAD (SPECIAL FINISH)
 - 48 METAL CLAD (SPECIAL FINISH)
 - 49 METAL CLAD (SPECIAL FINISH)
 - 50 METAL CLAD (SPECIAL FINISH)
 - 51 METAL CLAD (SPECIAL FINISH)
 - 52 METAL CLAD (SPECIAL FINISH)
 - 53 METAL CLAD (SPECIAL FINISH)
 - 54 METAL CLAD (SPECIAL FINISH)
 - 55 METAL CLAD (SPECIAL FINISH)
 - 56 METAL CLAD (SPECIAL FINISH)
 - 57 METAL CLAD (SPECIAL FINISH)
 - 58 METAL CLAD (SPECIAL FINISH)
 - 59 METAL CLAD (SPECIAL FINISH)
 - 60 METAL CLAD (SPECIAL FINISH)
 - 61 METAL CLAD (SPECIAL FINISH)
 - 62 METAL CLAD (SPECIAL FINISH)
 - 63 METAL CLAD (SPECIAL FINISH)
 - 64 METAL CLAD (SPECIAL FINISH)
 - 65 METAL CLAD (SPECIAL FINISH)
 - 66 METAL CLAD (SPECIAL FINISH)
 - 67 METAL CLAD (SPECIAL FINISH)
 - 68 METAL CLAD (SPECIAL FINISH)
 - 69 METAL CLAD (SPECIAL FINISH)
 - 70 METAL CLAD (SPECIAL FINISH)
 - 71 METAL CLAD (SPECIAL FINISH)
 - 72 METAL CLAD (SPECIAL FINISH)
 - 73 METAL CLAD (SPECIAL FINISH)
 - 74 METAL CLAD (SPECIAL FINISH)
 - 75 METAL CLAD (SPECIAL FINISH)
 - 76 METAL CLAD (SPECIAL FINISH)
 - 77 METAL CLAD (SPECIAL FINISH)
 - 78 METAL CLAD (SPECIAL FINISH)
 - 79 METAL CLAD (SPECIAL FINISH)
 - 80 METAL CLAD (SPECIAL FINISH)
 - 81 METAL CLAD (SPECIAL FINISH)
 - 82 METAL CLAD (SPECIAL FINISH)
 - 83 METAL CLAD (SPECIAL FINISH)
 - 84 METAL CLAD (SPECIAL FINISH)
 - 85 METAL CLAD (SPECIAL FINISH)
 - 86 METAL CLAD (SPECIAL FINISH)
 - 87 METAL CLAD (SPECIAL FINISH)
 - 88 METAL CLAD (SPECIAL FINISH)
 - 89 METAL CLAD (SPECIAL FINISH)
 - 90 METAL CLAD (SPECIAL FINISH)
 - 91 METAL CLAD (SPECIAL FINISH)
 - 92 METAL CLAD (SPECIAL FINISH)
 - 93 METAL CLAD (SPECIAL FINISH)
 - 94 METAL CLAD (SPECIAL FINISH)
 - 95 METAL CLAD (SPECIAL FINISH)
 - 96 METAL CLAD (SPECIAL FINISH)
 - 97 METAL CLAD (SPECIAL FINISH)
 - 98 METAL CLAD (SPECIAL FINISH)
 - 99 METAL CLAD (SPECIAL FINISH)
 - 100 METAL CLAD (SPECIAL FINISH)



SOUTH ELEVATION
1/8" = 1'-0"



WEST ELEVATION
1/8" = 1'-0"

The undersigned has provided building enclosure documents that, in my professional judgment, are appropriate to satisfy the requirements of RCQ 2-10-009 through 2-10-010.

Project or multiple reference:
New 12000sqft

by:
[Signature]

REVISIONS:
1 LIGHTING REVISION

RCQ Russell C. Page ARCHITECTS
1101 N. ALLEGRAH SUITE 107
SPRINGFIELD VA 22154
TEL: 540-833-1111 FAX: 540-833-1112

PROJECT: **THE METAS AT BEACON HILL**
RUSSELL C. PAGE ARCHITECTS
4000 W. WASHINGTON
SPRINGFIELD VA

DRAWING: **EXTERIOR ELEVATIONS**

DATE: 02-22-2022
PLOT SCALE: 1/8" = 1'-0"
DRAWN BY: GJW
JOB NO.: 22-167
SHEET NO.:

A3.0

