

**EXTERIOR MATERIALS**

- 1 METAL SIDING (SPECIFICALLY MENTIONED)
- 2 BRICKWORK
- 3 VINYL SIDING (UPPER PORTION)
- 4 CONCRETE (UPPER PORTION)
- 5 BRICKWORK (UPPER PORTION)
- 6 BRICKWORK (UPPER PORTION)
- 7 BRICKWORK (UPPER PORTION)
- 8 BRICKWORK (UPPER PORTION)
- 9 BRICKWORK (UPPER PORTION)
- 10 BRICKWORK (UPPER PORTION)
- 11 BRICKWORK (UPPER PORTION)
- 12 BRICKWORK (UPPER PORTION)
- 13 BRICKWORK (UPPER PORTION)
- 14 BRICKWORK (UPPER PORTION)
- 15 BRICKWORK (UPPER PORTION)
- 16 BRICKWORK (UPPER PORTION)
- 17 BRICKWORK (UPPER PORTION)
- 18 BRICKWORK (UPPER PORTION)
- 19 BRICKWORK (UPPER PORTION)
- 20 BRICKWORK (UPPER PORTION)
- 21 BRICKWORK (UPPER PORTION)
- 22 BRICKWORK (UPPER PORTION)
- 23 BRICKWORK (UPPER PORTION)
- 24 BRICKWORK (UPPER PORTION)
- 25 BRICKWORK (UPPER PORTION)
- 26 BRICKWORK (UPPER PORTION)
- 27 BRICKWORK (UPPER PORTION)
- 28 BRICKWORK (UPPER PORTION)
- 29 BRICKWORK (UPPER PORTION)
- 30 BRICKWORK (UPPER PORTION)
- 31 BRICKWORK (UPPER PORTION)
- 32 BRICKWORK (UPPER PORTION)
- 33 BRICKWORK (UPPER PORTION)
- 34 BRICKWORK (UPPER PORTION)
- 35 BRICKWORK (UPPER PORTION)
- 36 BRICKWORK (UPPER PORTION)
- 37 BRICKWORK (UPPER PORTION)
- 38 BRICKWORK (UPPER PORTION)
- 39 BRICKWORK (UPPER PORTION)
- 40 BRICKWORK (UPPER PORTION)
- 41 BRICKWORK (UPPER PORTION)
- 42 BRICKWORK (UPPER PORTION)
- 43 BRICKWORK (UPPER PORTION)
- 44 BRICKWORK (UPPER PORTION)
- 45 BRICKWORK (UPPER PORTION)
- 46 BRICKWORK (UPPER PORTION)
- 47 BRICKWORK (UPPER PORTION)
- 48 BRICKWORK (UPPER PORTION)
- 49 BRICKWORK (UPPER PORTION)
- 50 BRICKWORK (UPPER PORTION)
- 51 BRICKWORK (UPPER PORTION)
- 52 BRICKWORK (UPPER PORTION)
- 53 BRICKWORK (UPPER PORTION)
- 54 BRICKWORK (UPPER PORTION)
- 55 BRICKWORK (UPPER PORTION)
- 56 BRICKWORK (UPPER PORTION)
- 57 BRICKWORK (UPPER PORTION)
- 58 BRICKWORK (UPPER PORTION)
- 59 BRICKWORK (UPPER PORTION)
- 60 BRICKWORK (UPPER PORTION)
- 61 BRICKWORK (UPPER PORTION)
- 62 BRICKWORK (UPPER PORTION)
- 63 BRICKWORK (UPPER PORTION)
- 64 BRICKWORK (UPPER PORTION)
- 65 BRICKWORK (UPPER PORTION)
- 66 BRICKWORK (UPPER PORTION)
- 67 BRICKWORK (UPPER PORTION)
- 68 BRICKWORK (UPPER PORTION)
- 69 BRICKWORK (UPPER PORTION)
- 70 BRICKWORK (UPPER PORTION)
- 71 BRICKWORK (UPPER PORTION)
- 72 BRICKWORK (UPPER PORTION)
- 73 BRICKWORK (UPPER PORTION)
- 74 BRICKWORK (UPPER PORTION)
- 75 BRICKWORK (UPPER PORTION)
- 76 BRICKWORK (UPPER PORTION)
- 77 BRICKWORK (UPPER PORTION)
- 78 BRICKWORK (UPPER PORTION)
- 79 BRICKWORK (UPPER PORTION)
- 80 BRICKWORK (UPPER PORTION)
- 81 BRICKWORK (UPPER PORTION)
- 82 BRICKWORK (UPPER PORTION)
- 83 BRICKWORK (UPPER PORTION)
- 84 BRICKWORK (UPPER PORTION)
- 85 BRICKWORK (UPPER PORTION)
- 86 BRICKWORK (UPPER PORTION)
- 87 BRICKWORK (UPPER PORTION)
- 88 BRICKWORK (UPPER PORTION)
- 89 BRICKWORK (UPPER PORTION)
- 90 BRICKWORK (UPPER PORTION)
- 91 BRICKWORK (UPPER PORTION)
- 92 BRICKWORK (UPPER PORTION)
- 93 BRICKWORK (UPPER PORTION)
- 94 BRICKWORK (UPPER PORTION)
- 95 BRICKWORK (UPPER PORTION)
- 96 BRICKWORK (UPPER PORTION)
- 97 BRICKWORK (UPPER PORTION)
- 98 BRICKWORK (UPPER PORTION)
- 99 BRICKWORK (UPPER PORTION)
- 100 BRICKWORK (UPPER PORTION)

**EAST ELEVATION**  
1/8" = 1'-0"

**EAST ELEVATION**  
1/8" = 1'-0"

**THE METROS AT BEACON HILL**  
 4000 N. WINDY HILL  
 SPokane, WA  
 EXTERIOR ELEVATIONS

**RCP Russell C. Page ARCHITECTS**  
 1101 N. ALBANY STREET, SUITE 107  
 SPokane, WA 99201  
 TEL: 509.325.1100  
 FAX: 509.325.1101  
 WWW.RCPARCHITECTS.COM

DATE: 08-22-2022  
 PLOT SCALE: 1/8" = 1'-0"  
 DRAWN BY: GTR  
 JOB NO.: 22-167  
 SHEET NO.: A3.0

REVISIONS:  
 1. 08/22/22  
 2. 08/22/22  
 3. 08/22/22  
 4. 08/22/22  
 5. 08/22/22  
 6. 08/22/22  
 7. 08/22/22  
 8. 08/22/22  
 9. 08/22/22  
 10. 08/22/22  
 11. 08/22/22  
 12. 08/22/22  
 13. 08/22/22  
 14. 08/22/22  
 15. 08/22/22  
 16. 08/22/22  
 17. 08/22/22  
 18. 08/22/22  
 19. 08/22/22  
 20. 08/22/22  
 21. 08/22/22  
 22. 08/22/22  
 23. 08/22/22  
 24. 08/22/22  
 25. 08/22/22  
 26. 08/22/22  
 27. 08/22/22  
 28. 08/22/22  
 29. 08/22/22  
 30. 08/22/22  
 31. 08/22/22  
 32. 08/22/22  
 33. 08/22/22  
 34. 08/22/22  
 35. 08/22/22  
 36. 08/22/22  
 37. 08/22/22  
 38. 08/22/22  
 39. 08/22/22  
 40. 08/22/22  
 41. 08/22/22  
 42. 08/22/22  
 43. 08/22/22  
 44. 08/22/22  
 45. 08/22/22  
 46. 08/22/22  
 47. 08/22/22  
 48. 08/22/22  
 49. 08/22/22  
 50. 08/22/22  
 51. 08/22/22  
 52. 08/22/22  
 53. 08/22/22  
 54. 08/22/22  
 55. 08/22/22  
 56. 08/22/22  
 57. 08/22/22  
 58. 08/22/22  
 59. 08/22/22  
 60. 08/22/22  
 61. 08/22/22  
 62. 08/22/22  
 63. 08/22/22  
 64. 08/22/22  
 65. 08/22/22  
 66. 08/22/22  
 67. 08/22/22  
 68. 08/22/22  
 69. 08/22/22  
 70. 08/22/22  
 71. 08/22/22  
 72. 08/22/22  
 73. 08/22/22  
 74. 08/22/22  
 75. 08/22/22  
 76. 08/22/22  
 77. 08/22/22  
 78. 08/22/22  
 79. 08/22/22  
 80. 08/22/22  
 81. 08/22/22  
 82. 08/22/22  
 83. 08/22/22  
 84. 08/22/22  
 85. 08/22/22  
 86. 08/22/22  
 87. 08/22/22  
 88. 08/22/22  
 89. 08/22/22  
 90. 08/22/22  
 91. 08/22/22  
 92. 08/22/22  
 93. 08/22/22  
 94. 08/22/22  
 95. 08/22/22  
 96. 08/22/22  
 97. 08/22/22  
 98. 08/22/22  
 99. 08/22/22  
 100. 08/22/22

ARCHITECTURAL DRAWING FOR THE METROS AT BEACON HILL EXTERIOR ELEVATIONS, 08/22/22, 1/8" = 1'-0", OWNED BY RCP

**EXTERIOR MATERIALS**

- METAL CLADDING (HORIZONTAL)
- BRICKWORK
- GLASS CURTAIN WALL
- TERRAZZO
- CONCRETE
- STONE
- WOOD
- PLASTER
- GYPSUM BOARD
- INSULATION
- ROOFING
- PAINT
- FINISH

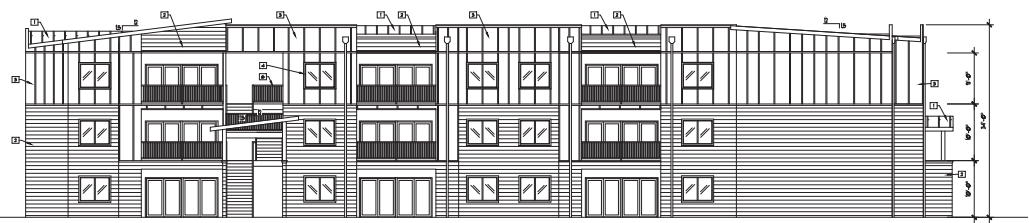
1. ALL MATERIALS TO BE USED SHALL BE APPROVED BY THE ARCHITECT PRIOR TO ORDERING.

2. ALL MATERIALS TO BE USED SHALL BE APPROVED BY THE ARCHITECT PRIOR TO ORDERING.

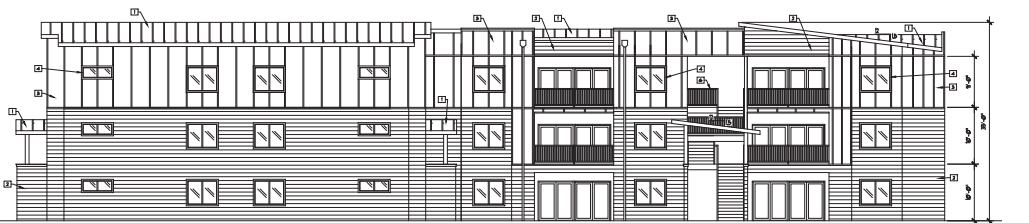
3. ALL MATERIALS TO BE USED SHALL BE APPROVED BY THE ARCHITECT PRIOR TO ORDERING.

4. ALL MATERIALS TO BE USED SHALL BE APPROVED BY THE ARCHITECT PRIOR TO ORDERING.

5. ALL MATERIALS TO BE USED SHALL BE APPROVED BY THE ARCHITECT PRIOR TO ORDERING.



**NORTH ELEVATION**  
18' - 0"



**SOUTH ELEVATION**  
18' - 0"

PROJECT: **THE METAS AT BEACON HILL**  
 4000 HAWAIIAN AVENUE  
 SEASIDE, WA 97138

DRAWINGS: **EXTERIOR ELEVATIONS**

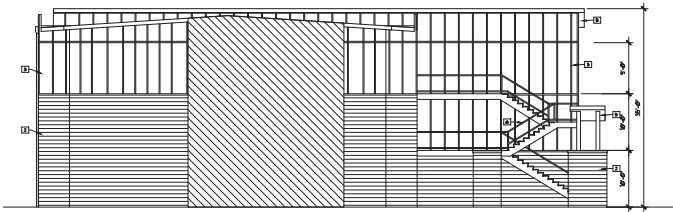
DATE: 11-22-2022  
 PLOT SCALE: 1/8" = 1'-0"  
 DRAWN BY: GTW  
 JOB NO.: 22-167  
 SHEET NO.:

**RCP** Russell C. Page  
**ARCHITECTS**  
 1131 N. ALBERMARLE STREET, 107  
 SEASIDE, WA 97138  
 (503) 738-7777

I, **Russell C. Page**, ARCHITECT, hereby certify that the undersigned has prepared the drawings shown on this sheet and that the same are true and correct copies of the original drawings.

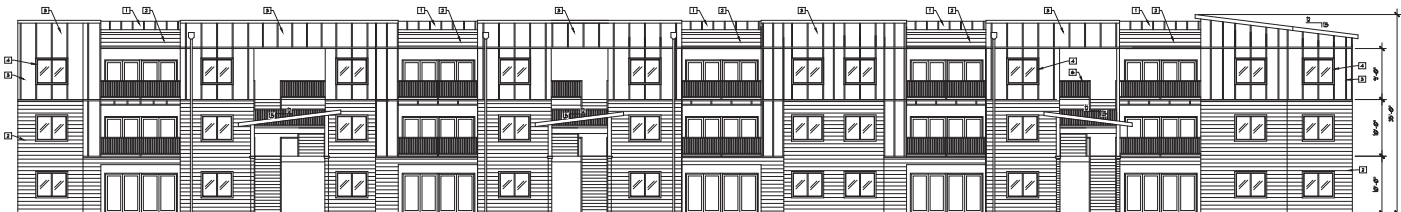
The undersigned has prepared the drawings shown on this sheet and that the same are true and correct copies of the original drawings.

WCP ARCHITECTURE ASSOCIATES FOR THE ARCHITECT. ALL RIGHTS RESERVED. EXTERIOR ELEVATIONS. 11-22-2022. 11-22-2022. DWT to RCP



**WEST ELEVATION**  
1/8" = 1'-0"

- EXTERIOR MATERIALS**
- (1) METAL MESH MECHANICALLY FASTENED
  - (2) BRICKWORK
  - (3) METAL PANELS
  - (4) METAL PANELS WITH GLASS
  - (5) METAL PANELS WITH GLASS AND METAL MESH
  - (6) METAL PANELS WITH GLASS AND METAL MESH WITH METAL MESH
  - (7) METAL PANELS WITH GLASS AND METAL MESH WITH METAL MESH AND METAL MESH
  - (8) METAL PANELS WITH GLASS AND METAL MESH WITH METAL MESH AND METAL MESH AND METAL MESH
  - (9) METAL PANELS WITH GLASS AND METAL MESH WITH METAL MESH AND METAL MESH AND METAL MESH AND METAL MESH
  - (10) METAL PANELS WITH GLASS AND METAL MESH WITH METAL MESH AND METAL MESH AND METAL MESH AND METAL MESH AND METAL MESH
  - (11) METAL PANELS WITH GLASS AND METAL MESH WITH METAL MESH AND METAL MESH AND METAL MESH AND METAL MESH AND METAL MESH AND METAL MESH
  - (12) METAL PANELS WITH GLASS AND METAL MESH WITH METAL MESH AND METAL MESH AND METAL MESH AND METAL MESH AND METAL MESH AND METAL MESH AND METAL MESH
  - (13) METAL PANELS WITH GLASS AND METAL MESH WITH METAL MESH AND METAL MESH AND METAL MESH AND METAL MESH AND METAL MESH AND METAL MESH AND METAL MESH AND METAL MESH
  - (14) METAL PANELS WITH GLASS AND METAL MESH WITH METAL MESH AND METAL MESH AND METAL MESH AND METAL MESH AND METAL MESH AND METAL MESH AND METAL MESH AND METAL MESH AND METAL MESH
  - (15) METAL PANELS WITH GLASS AND METAL MESH WITH METAL MESH AND METAL MESH AND METAL MESH AND METAL MESH AND METAL MESH AND METAL MESH AND METAL MESH AND METAL MESH AND METAL MESH AND METAL MESH
  - (16) METAL PANELS WITH GLASS AND METAL MESH WITH METAL MESH AND METAL MESH AND METAL MESH AND METAL MESH AND METAL MESH AND METAL MESH AND METAL MESH AND METAL MESH AND METAL MESH AND METAL MESH AND METAL MESH
  - (17) METAL PANELS WITH GLASS AND METAL MESH WITH METAL MESH AND METAL MESH AND METAL MESH AND METAL MESH AND METAL MESH AND METAL MESH AND METAL MESH AND METAL MESH AND METAL MESH AND METAL MESH AND METAL MESH AND METAL MESH
  - (18) METAL PANELS WITH GLASS AND METAL MESH WITH METAL MESH AND METAL MESH AND METAL MESH AND METAL MESH AND METAL MESH AND METAL MESH AND METAL MESH AND METAL MESH AND METAL MESH AND METAL MESH AND METAL MESH AND METAL MESH AND METAL MESH
  - (19) METAL PANELS WITH GLASS AND METAL MESH WITH METAL MESH AND METAL MESH AND METAL MESH AND METAL MESH AND METAL MESH AND METAL MESH AND METAL MESH AND METAL MESH AND METAL MESH AND METAL MESH AND METAL MESH AND METAL MESH AND METAL MESH AND METAL MESH
  - (20) METAL PANELS WITH GLASS AND METAL MESH WITH METAL MESH AND METAL MESH AND METAL MESH AND METAL MESH AND METAL MESH AND METAL MESH AND METAL MESH AND METAL MESH AND METAL MESH AND METAL MESH AND METAL MESH AND METAL MESH AND METAL MESH AND METAL MESH AND METAL MESH



**WEST ELEVATION**  
1/8" = 1'-0"

PROJECT: THE METAS AT BEACON HILL  
 4000 WYOMING AVE  
 SPokane, WA  
 DRAWING: EXTERIOR ELEVATIONS, BLDG. 2

DATE: 08-22-2022  
 PLOT SCALE: 1/8" = 1'-0"  
 DRAWN BY: QTV  
 JOB NO.: 22-167  
 SHEET NO.:

**A3.2**

RCP ARCHITECTS  
 1101 N. ALLEGRA ST. SUITE 107  
 SPokane, WA 99201  
 TEL: 509.325.1111  
 WWW.RCPARCHITECTS.COM

REVISIONS:  
 1. LIGHT REVISIONS

THE UNDERSIGNED HAS PROVIDED THESE EXTERIOR ELEVATIONS TO THE CLIENT AS A SERVICE. THE CLIENT IS RESPONSIBLE FOR OBTAINING ALL NECESSARY PERMITS AND APPROVALS FROM THE LOCAL AUTHORITIES. THE UNDERSIGNED IS NOT RESPONSIBLE FOR ANY DELAYS OR COSTS INCURRED BY THE CLIENT IN OBTAINING SUCH PERMITS AND APPROVALS.

RCP ARCHITECTS 2022. ALL RIGHTS RESERVED. EXTERIOR ELEVATIONS, BLDG. 2, 08-22-2022. DWG. NO. A3.2