

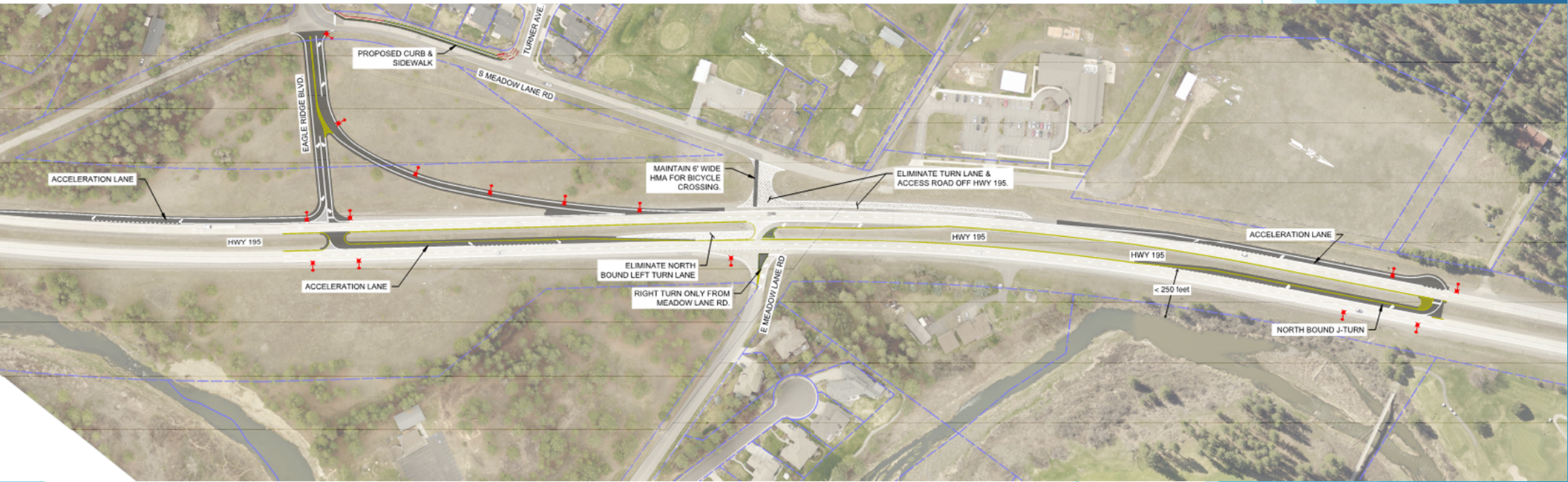
US 195 MEADOWLANE J-TURN

Public Meeting
Mullan Rd Elementary
12/6/2023





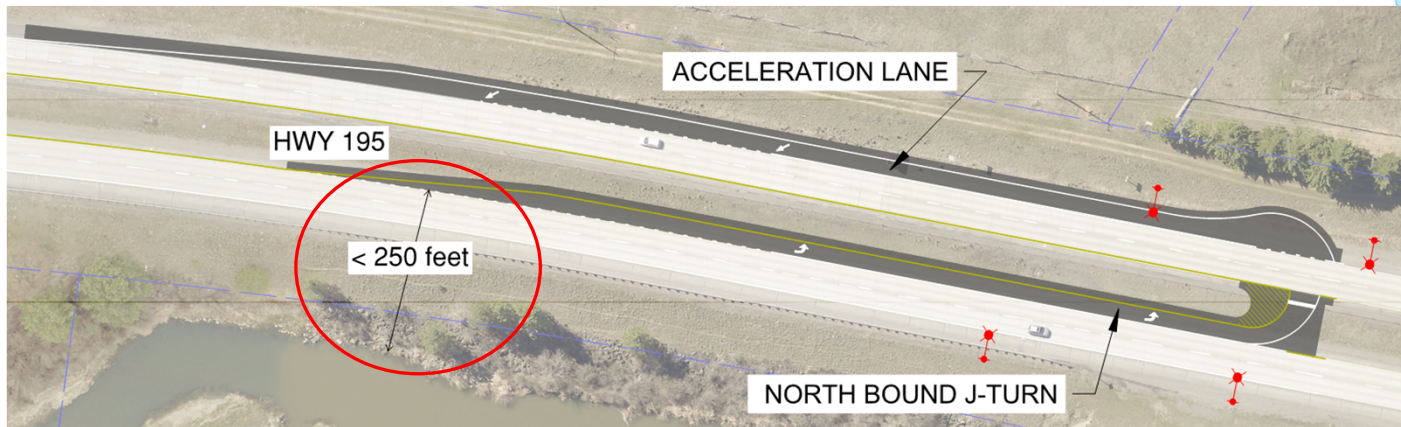
PROJECT AREA





WHY ARE WE HERE TONIGHT

- Environmental permit for work within 250 feet of the creek requires a public meeting
- **NO IMPACT TO THE STREAM**





WHY ARE WE HERE TONIGHT?

- Environmental permit for work within 250 feet of the creek requires a public meeting
 - NO IMPACT TO THE STREAM
- To share key elements of the project as it stands today





PROJECT OBJECTIVES

- Improve access to HWY 195
- Improve safety entering and exiting the highway

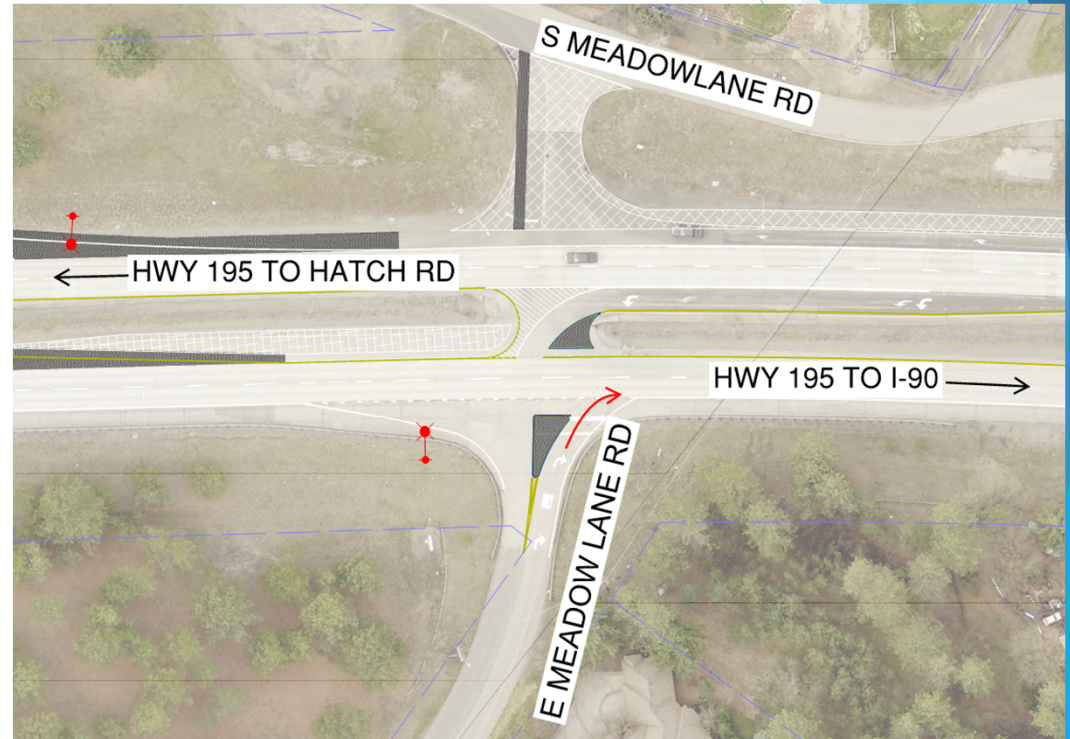




PROJECT OVERVIEW

E MEADOWLANE RD

- Right turn from E Meadowlane Rd onto HWY 195 toward I-90

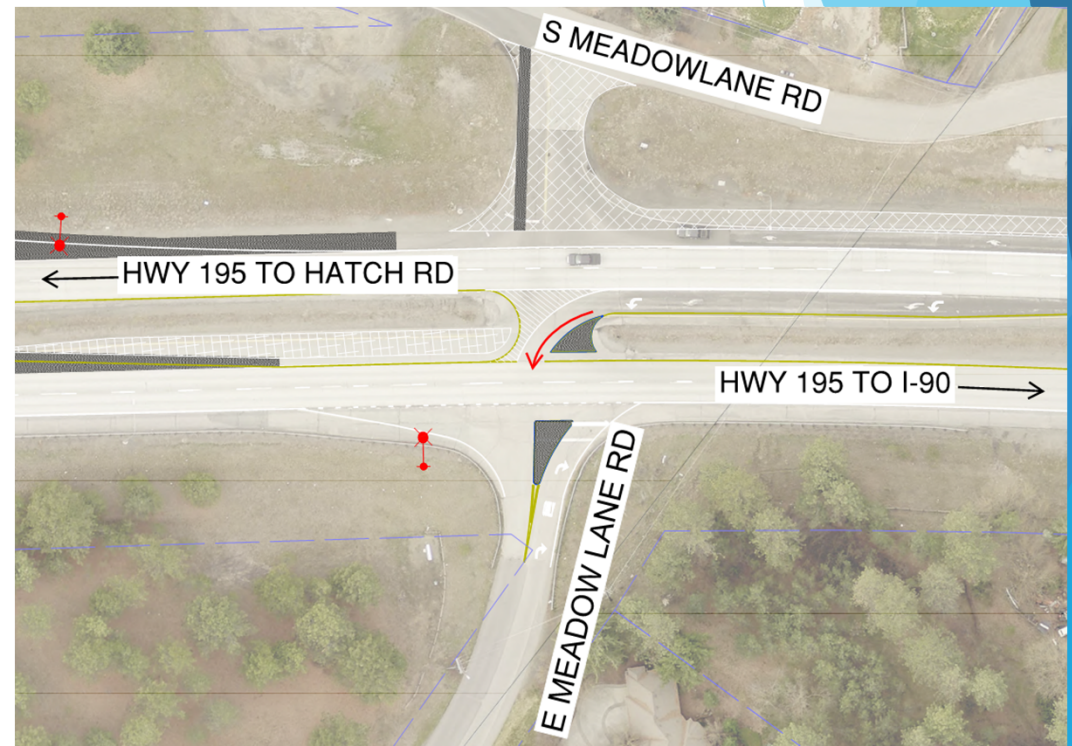




PROJECT OVERVIEW

E MEADOWLANE RD

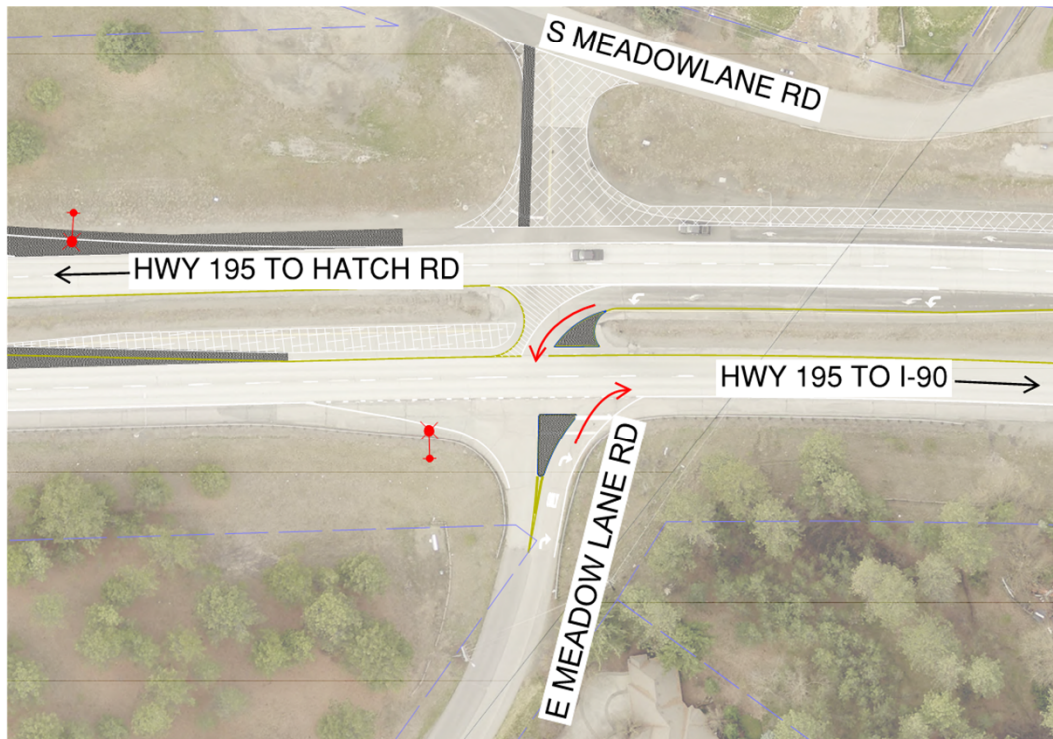
- Left turn from HWY 195 onto E Meadowlane Rd





PROJECT OVERVIEW

E MEADOWLANE RD

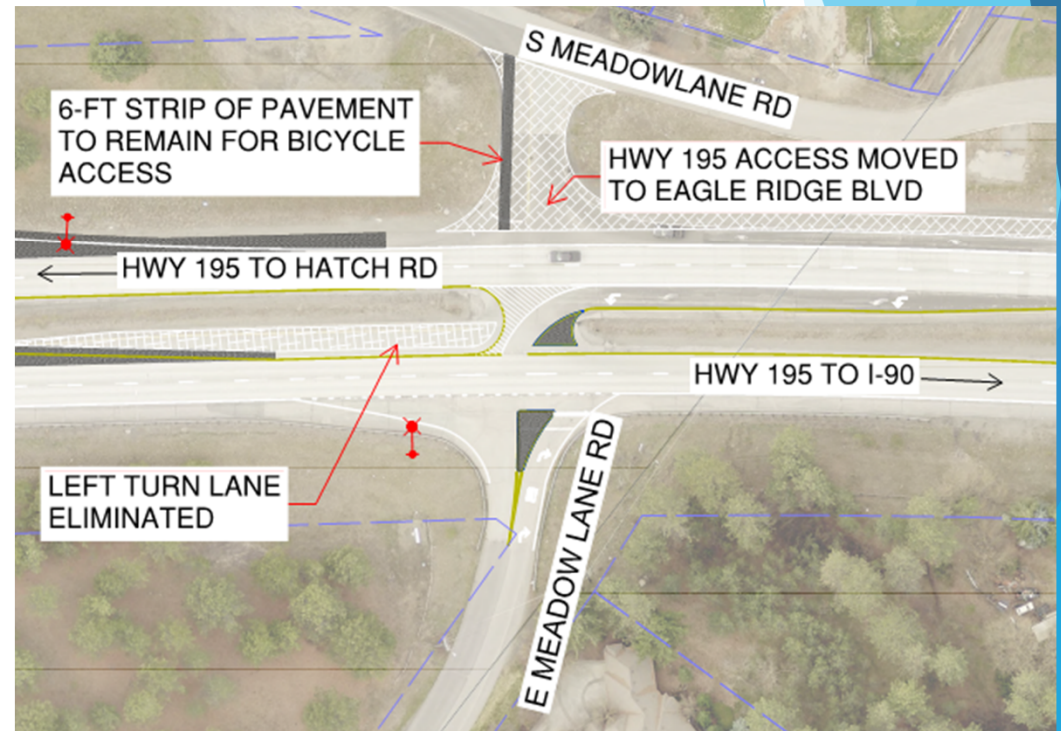




PROJECT OVERVIEW

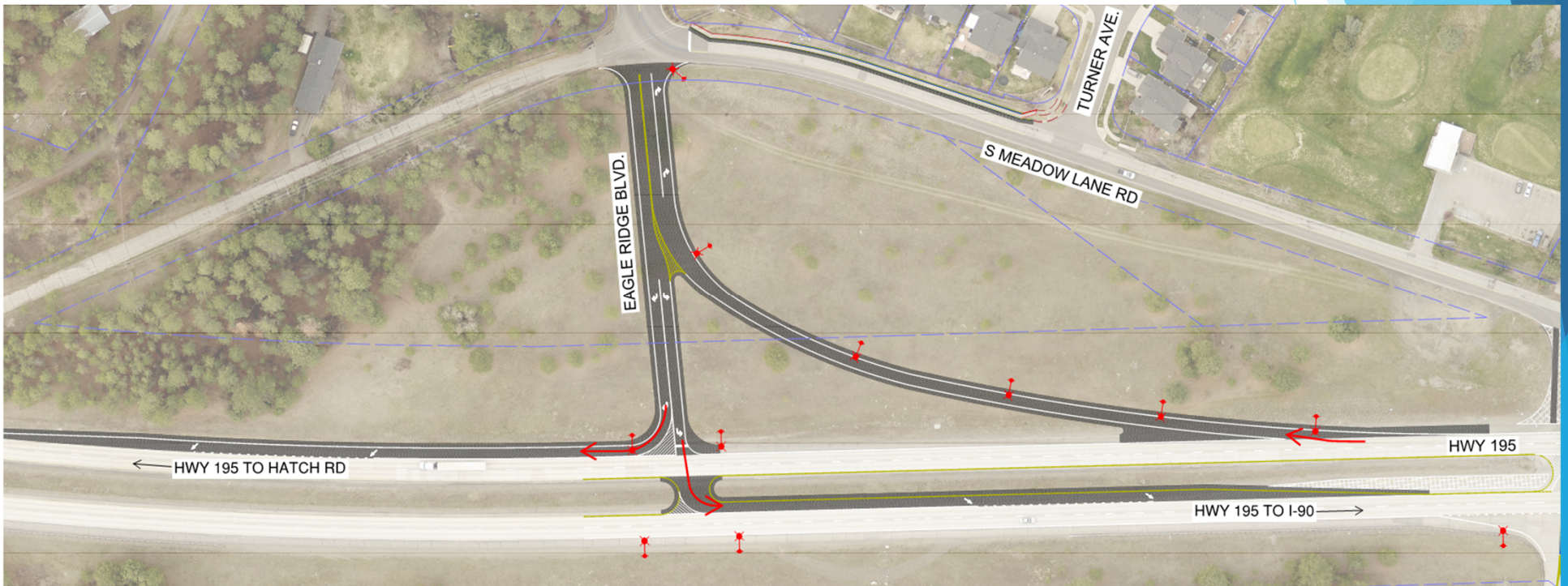
S MEADOWLANE RD

- Vehicle access to HWY 195 moves to extended W Eagle Ridge Blvd
- 6-ft strip of pavement remains to allow bicycle access to HWY 195
- Left turn lane on NB HWY 195 eliminated





PROJECT OVERVIEW W EAGLE RIDGE BLVD

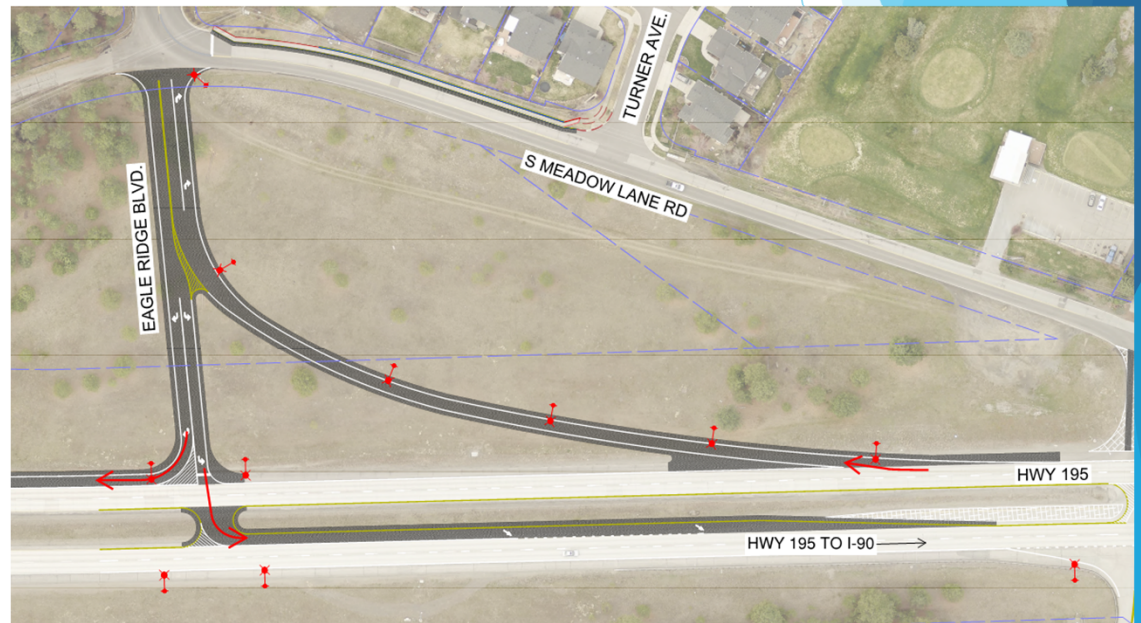




PROJECT OVERVIEW

W EAGLE RIDGE BLVD

- Dedicated off ramp from SB HWY 195 (right turn)

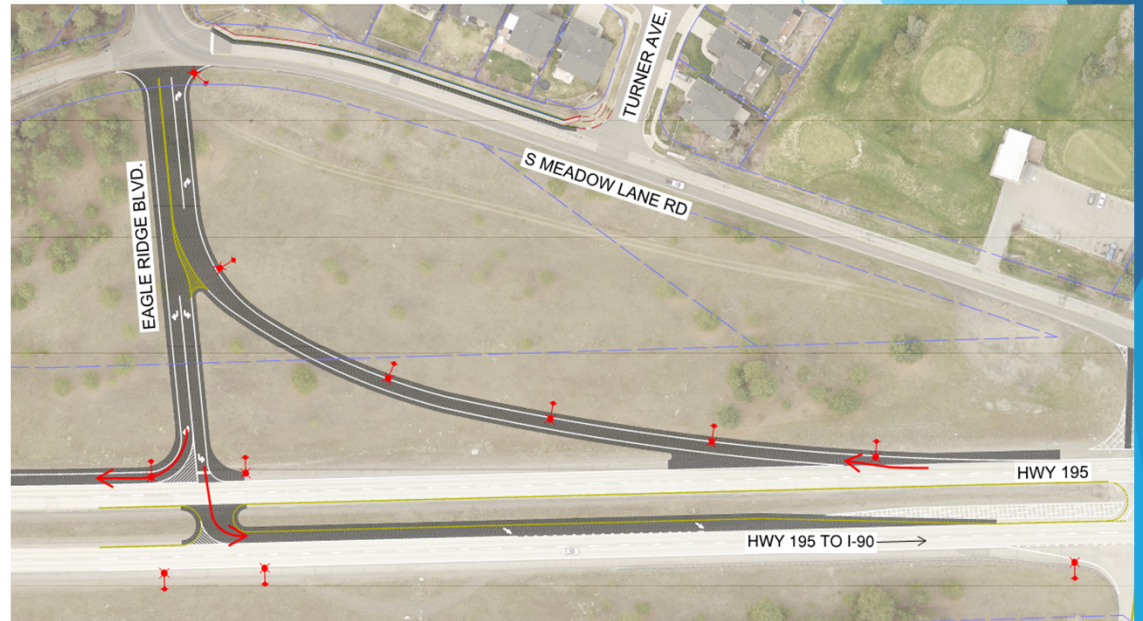




PROJECT OVERVIEW

W EAGLE RIDGE BLVD

- Left turn from W Eagle Ridge Blvd to HWY 195 (toward I-90) with an acceleration lane

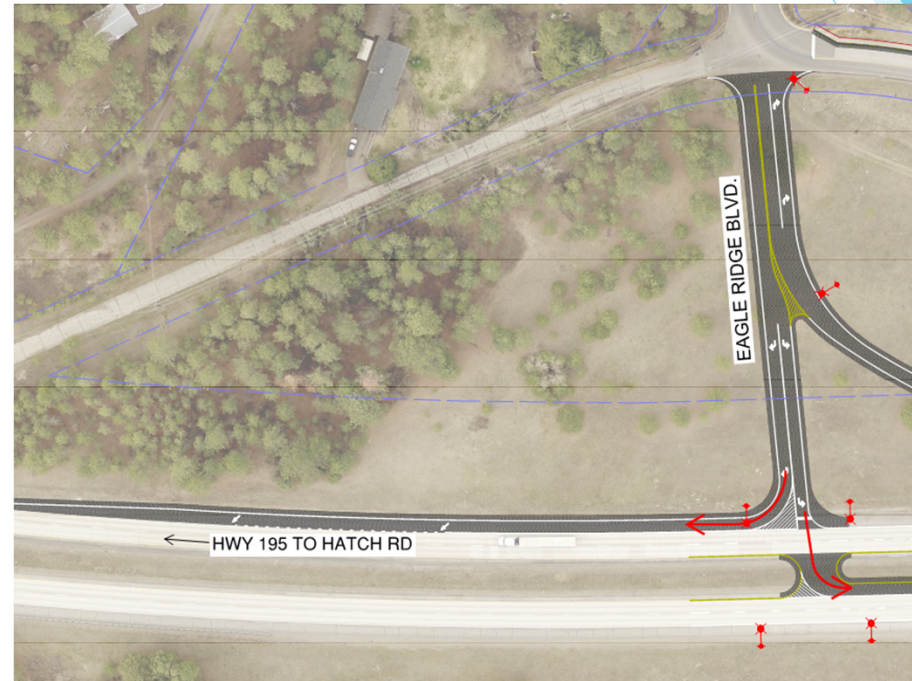




PROJECT OVERVIEW

W EAGLE RIDGE BLVD

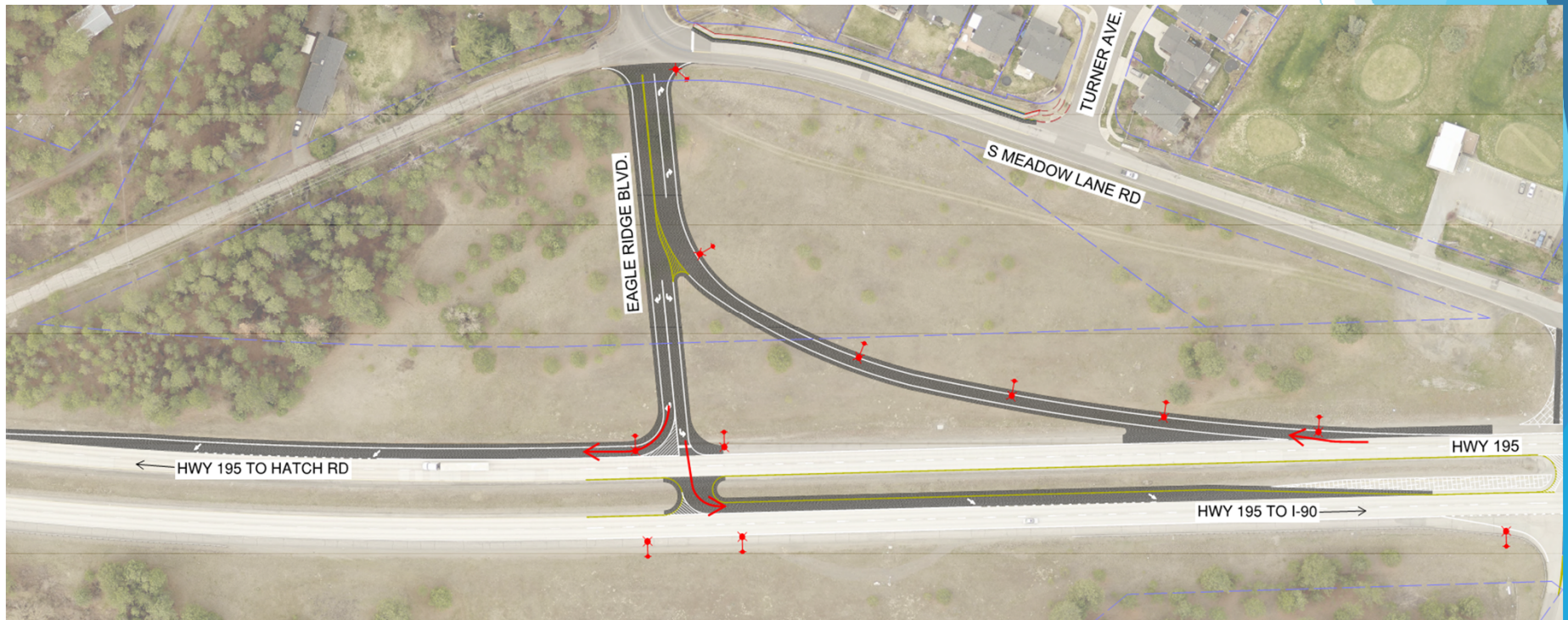
- Right turn from W Eagle Ridge Blvd to HWY 195 (toward Hatch Rd), with a possible acceleration lane





PROJECT OVERVIEW

W EAGLE RIDGE BLVD





SAFETY IMPROVEMENTS

- Fewer conflict points
- Vehicles turning right from SB HWY 195 will queue on the off ramp, away from highway traffic
- Acceleration lanes allow vehicles to reach highway speed before entering traffic



Questions/Comments

Contact:
Ben Ward
Senior Engineer
509-625-6303 or bward@spokanecity.org





WHY NO J-TURN SOUTH OF MEADOWLANE?

- NB and SB not at same elevation
- Environmental complications—work would be much closer to the stream
- Additional J-turn is not a significant improvement over proposed intersection

