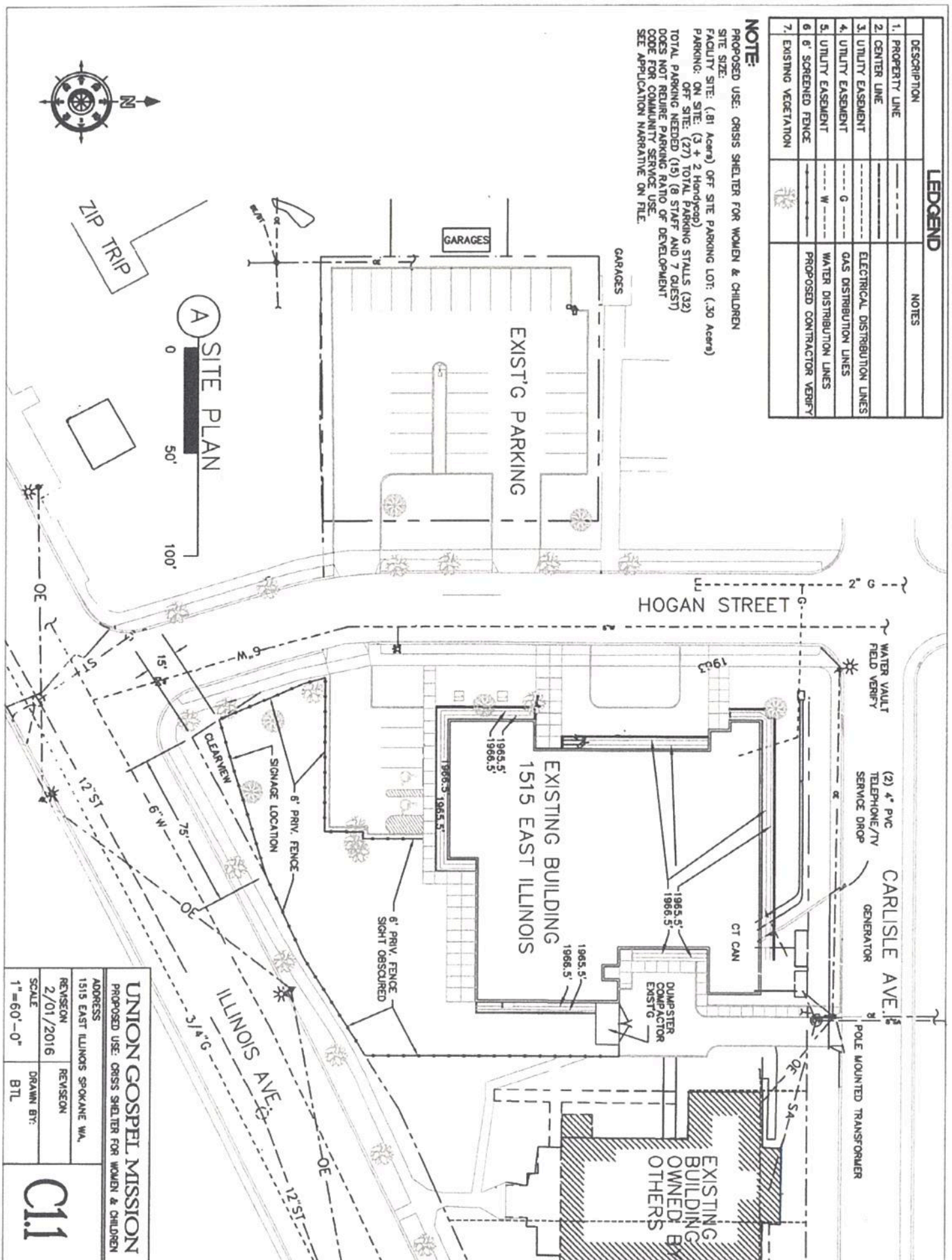


LEGEND	
DESCRIPTION	NOTES
1. PROPERTY LINE	
2. CENTER LINE	
3. UTILITY EASEMENT	ELECTRICAL DISTRIBUTION LINES
4. UTILITY EASEMENT	GAS DISTRIBUTION LINES
5. UTILITY EASEMENT	WATER DISTRIBUTION LINES
6. 6' SCREENED FENCE	PROPOSED CONTRACTOR VERIFY
7. EXISTING VEGETATION	

NOTE:

PROPOSED USE: CRISIS SHELTER FOR WOMEN & CHILDREN
 SITE SIZE:
 FACILITY SITE: (.81 Acres) OFF SITE PARKING LOT: (.30 Acres)
 PARKING: ON SITE: (3 + 2 Handicap) TOTAL PARKING STALLS (32)
 OFF SITE: (27) TOTAL PARKING STALLS (32)
 TOTAL PARKING NEEDED (15) (8 STAFF AND 7 GUEST)
 DOES NOT REQUIRE PARKING RATIO OF DEVELOPMENT
 CODE FOR COMMUNITY SERVICE USE.
 SEE APPLICATION NARRATIVE ON FILE.



A SITE PLAN



ZIP TRIP

UNION GOSPEL MISSION	
PROPOSED USE: CRISIS SHELTER FOR WOMEN & CHILDREN	
ADDRESS	1515 EAST ILLINOIS SPOKANE WA.
REVISION	2/01/2016
SCALE	1"=60'-0"
DRAWN BY:	BTL
C11	