

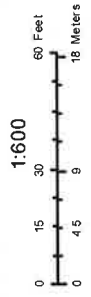
## Project Narrative

This application is for the use of an existing residentially zoned structure as a temporary fire station for a period of 3-5 years. This project will utilize an existing site that has already been developed with a large gravel turnaround and a garage of suitable depth to allow a single fire apparatus to be housed without structural additions or modifications to the existing building. The only modifications foreseen at this time will be the installation of a standard garage door that had been removed, the addition of ADA accessibility accommodations, the installation of a trench drain in the garage, the installation of a suitable fire suppression sprinkler, and the potential paving of a portion of the existing parking area.

This site will be staffed 24 hours a day, seven days a week and will reduce emergency response times in the area from over 10 minutes to less than 5 minutes. It is anticipated that this location will only receive 1-2 emergency calls per week. There will be a 2 man crew at this location until staffing allows for a standard crew of 3 men.



City of Spokane GIS



**THIS IS NOT A LEGAL DOCUMENT:**  
 The information shown on this map is compiled from various sources and is subject to constant revision. Information shown on this map should not be used to determine the location of facilities in relationship to property lines, section lines, streets, etc.

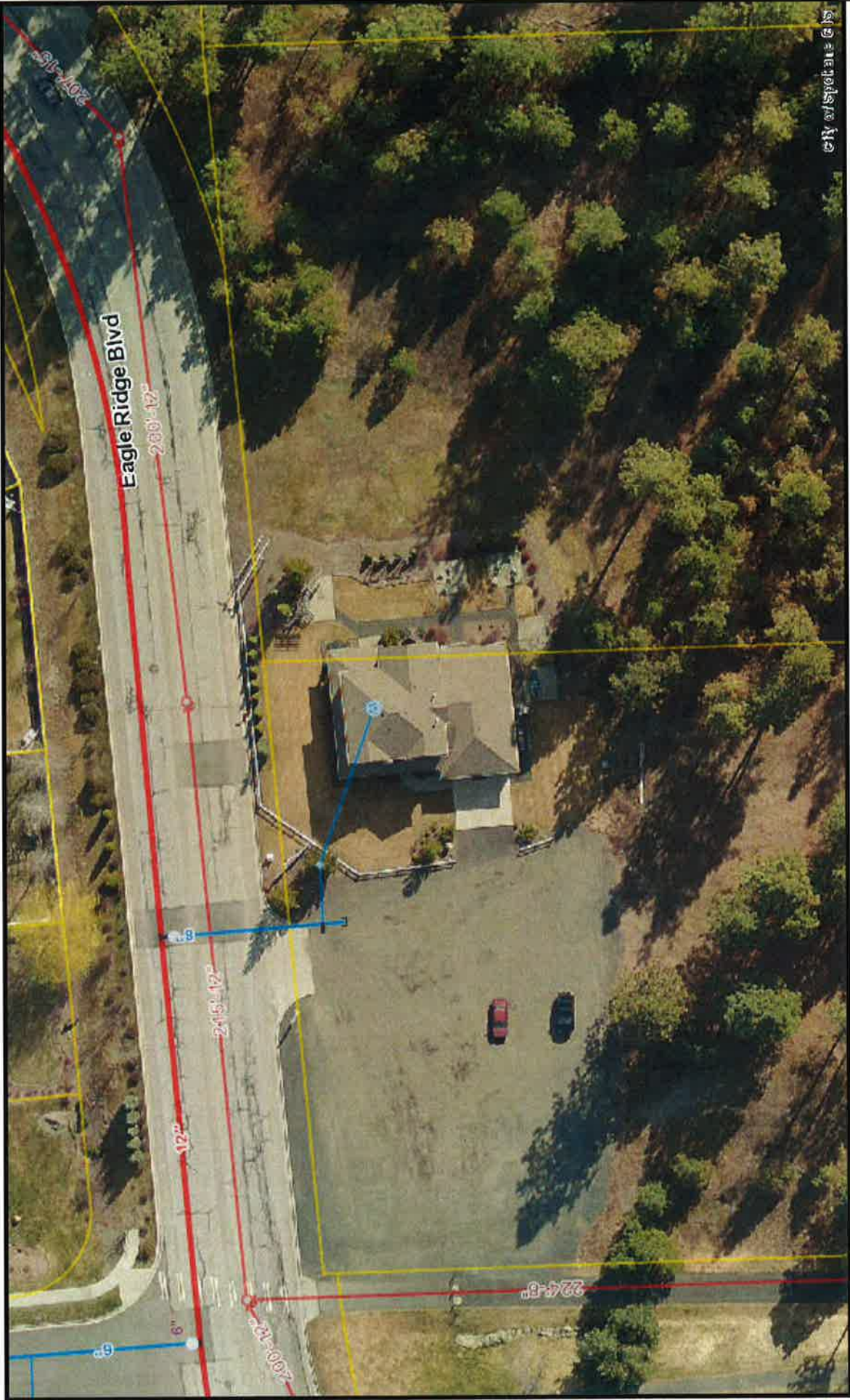
**Legend**

- Curb Stop Valves
- AirControl
- Altitude
- Blowoff
- Pressure Relief
- Simple Check
- Ball Valve
- Butterfly Valve
- Gate Valve
- Ball Valve
- Butterfly Valve
- Gate Valve
- Ball Valve
- Butterfly Valve
- Gate Valve
- Ball Valve
- System Change
- Pressure Reducing Valves
- Meter
- Critical Service
- Butterfly Valve
- Gate Valve
- Temporary Open Valve
- Normally Closed Valve
- Temporary Closed Valve

**Eagle Ridge Temp Fire Station**

May 14, 2015





City of Spokane GIS



**THIS IS NOT A LEGAL DOCUMENT:**  
 The information shown on this map is compiled from various sources and is subject to constant revision. Information shown on this map should not be used to determine the location of facilities in relationship to property lines, section lines, streets, etc.

**Legend**

- Curb Stop Valves
- Air Control
- Altitude
- Blowoff
- Pressure Relief
- Simple Check
- Ball Valve
- Butterfly Valve
- Gate Valve
- Ball Valve
- Butterfly Valve
- Gate Valve
- Ball Valve
- Butterfly Valve
- Gate Valve
- Gate Valve
- Ball Valve
- System Change
- Pressure Reducing Valves
- Meter
- Critical Service
- Butterfly Valve
- Gate Valve
- Temporary Open Valve
- Normally Closed Valve
- Temporary Closed Valve

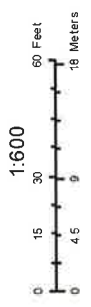
**Eagle Ridge Temp Fire Station**

May 14, 2015





City of Spokane



**THIS IS NOT A LEGAL DOCUMENT:**  
 The information shown on this map is compiled from various sources and is subject to constant revision. Information shown on this map should not be used to determine the location of facilities in relationship to property lines, section lines, streets, etc.

- Legend**
- System Change
  - Pressure Reducing Valves
  - Meter
  - Critical Service

- Butterfly Valve
- Gate Valve
- Temporary Open Valve
- Normally Closed Valve
- Temporary Closed Valve
- Simple Check
- Ball Valve
- Butterfly Valve
- Gate Valve
- Ball Valve
- Curb Stop Valves
- Air Control
- Altitude
- Blowoff
- Pressure Relief

# Eagle Ridge Temp Fire Station

May 14, 2015

