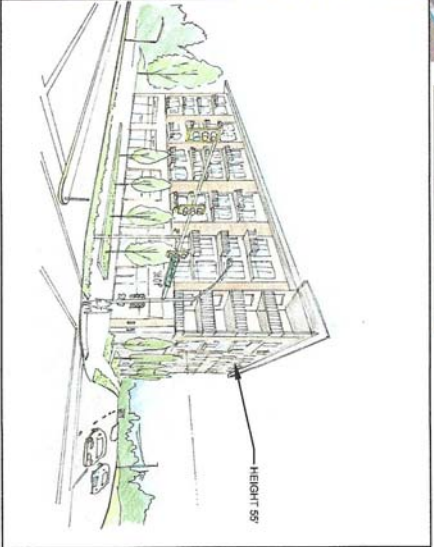


- LEGEND**
- SUBJECT PARCEL (1.43 ACRES)
 - WATER
 - SANITARY SEWER
 - POWER
 - STORM SEWER
 - ELEVATOR (2)
 - UNDERGROUND PARKING GARAGE
 - FIRE LANE
 - LANDSCAPING/STORM WATER FEATURES
 - POTENTIAL ENTRANCE/EXIT FOR GARAGE
 - SIDEWALK
 - POWER POLE
 - FIRE DEPARTMENT CONNECTION (FDC)
 - EXISTING FIRE HYDRANT
 - FIRE DEPARTMENT CONNECTION (FDC)



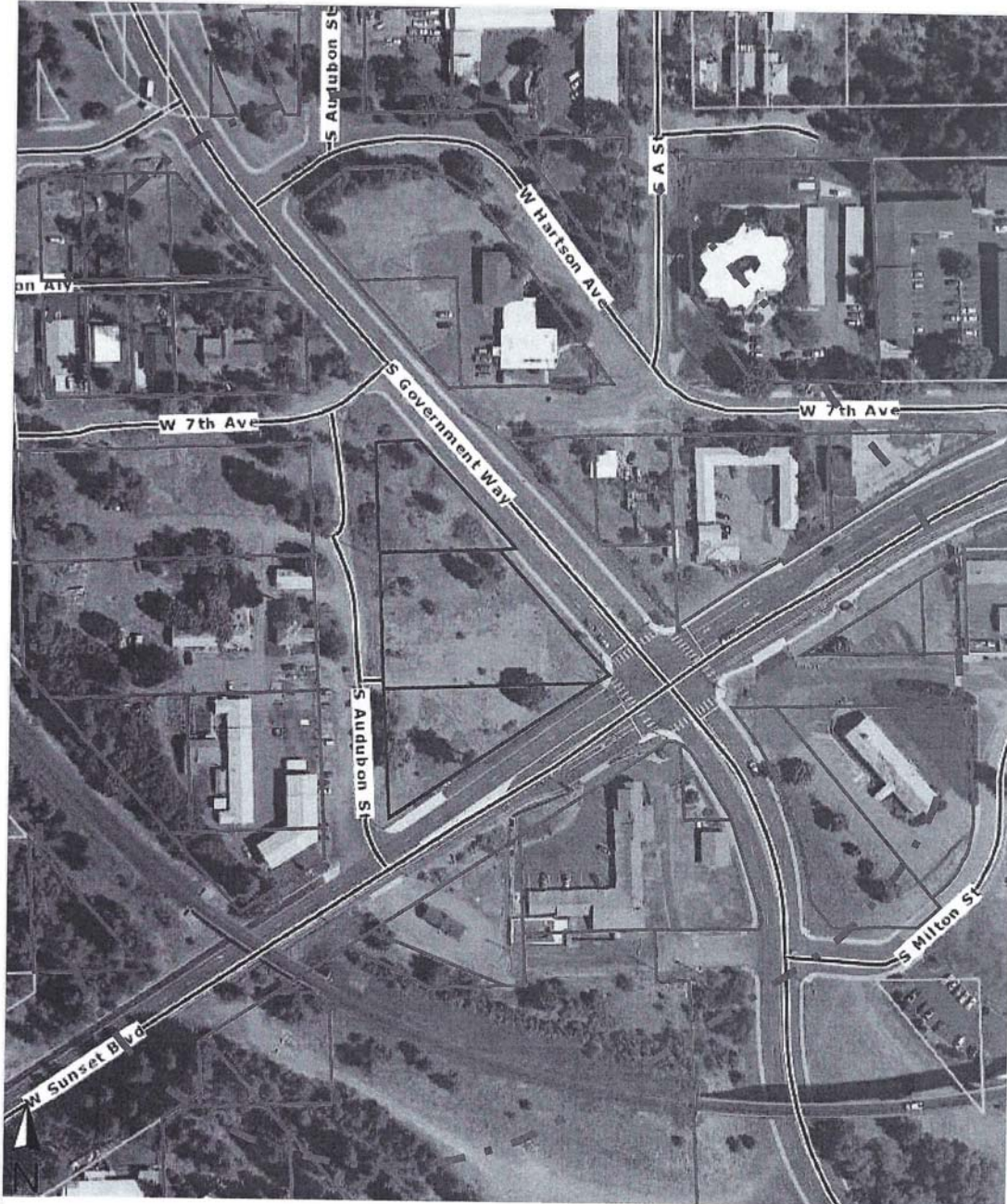
SUNSET WEST CONCEPTUAL SITE EXHIBIT

BUILDING FOOTPRINT: 25,850 SF
 SECTION A FOOTPRINT: 20,600 SF
 SECTION B (B1+B2) FOOTPRINT: 3,250 SF
 44 OUTDOOR PARKING SPACES
 92 GARAGE PARKING SPACES



CONCEPTUAL HAND RENDERING

T-O ENGINEERS
 1717 S. RUSTLE STREET SUITE 201
 SPOKANE, WA 99224
 WWW.T-O-ENGINEERS.COM
 PHONE: (509) 319-2980
 FAX: (509) 319-2980
 DATE: 08/20/2018



40 E. Spokane Falls Blvd
 Spokane, WA 99202
 Phone: 509-456-0550
 Fax: 866-537-9602

This map/plat is being furnished as an aid in locating the herein described land in relation to adjoining streets, natural boundaries and other land, and is not a survey of the land depicted. Except to the extent a policy of title insurance is expressly modified by endorsement, if any, the company does not insure dimensions, distances, location of easements, acreage or other matters shown thereon.