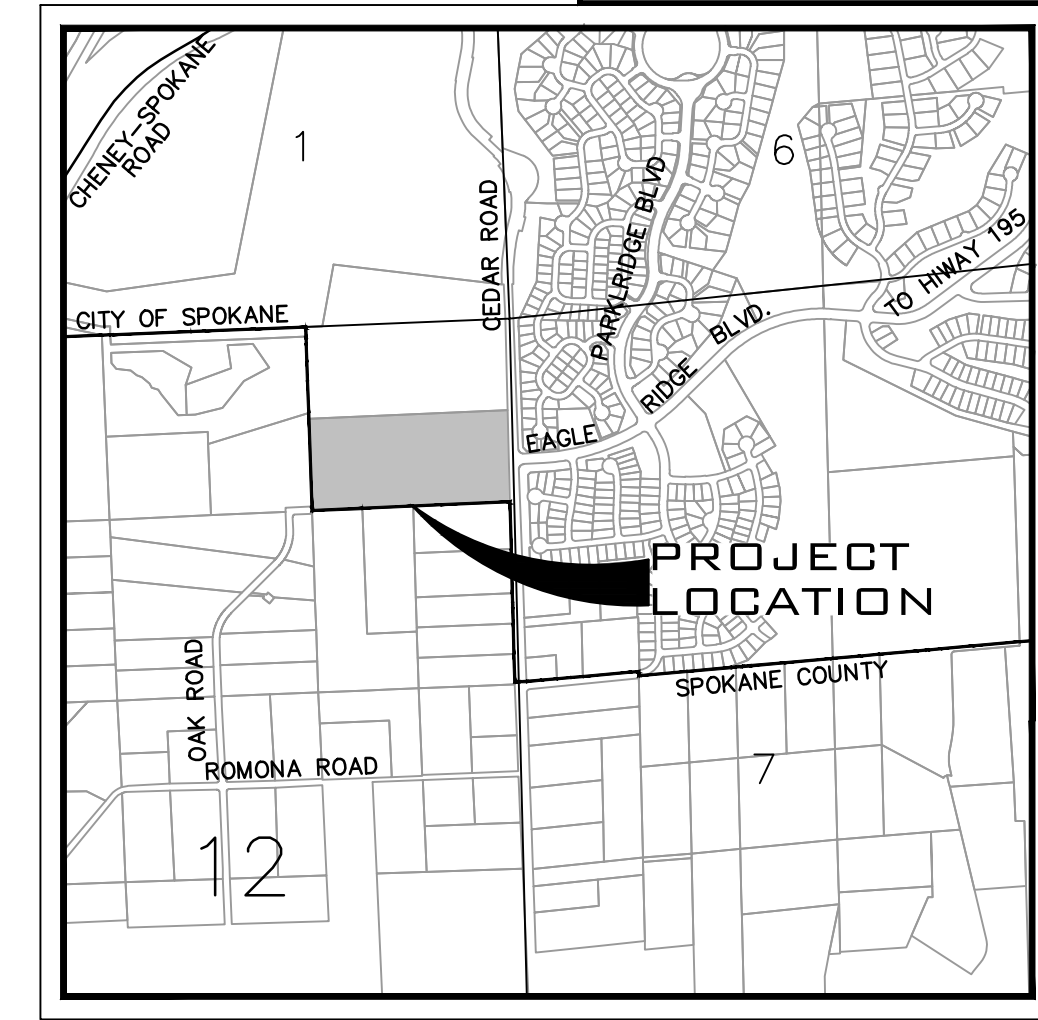
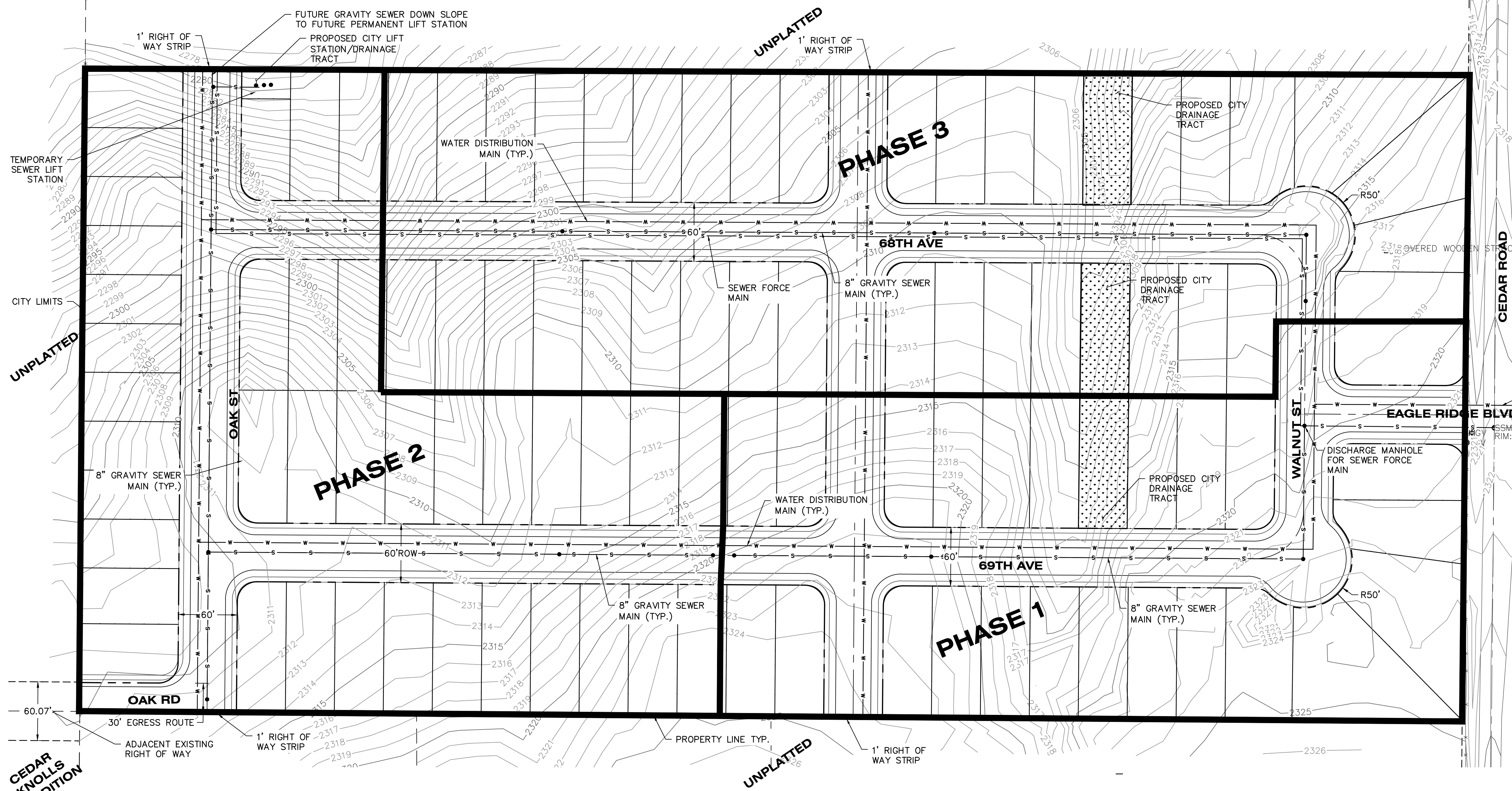


NE 1/4 OF THE NE 1/4 OF SEC 12 T 24 N., R 42 E. W.M.

PRELIMINARY UTILITY PLAN FOR "THE SUMMIT"

**UNDERGROUND SERVICE ALERT
ONE-CALL NUMBER**
 **811**
 CALL TWO BUSINESS DAYS
BEFORE YOU DIG



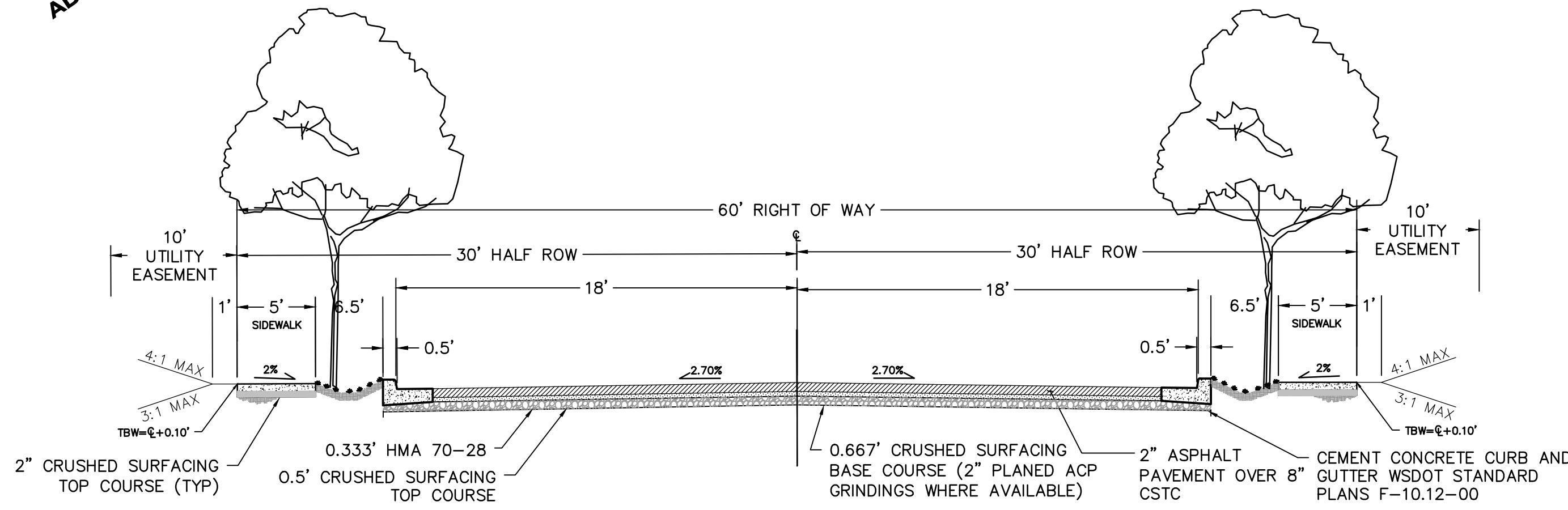
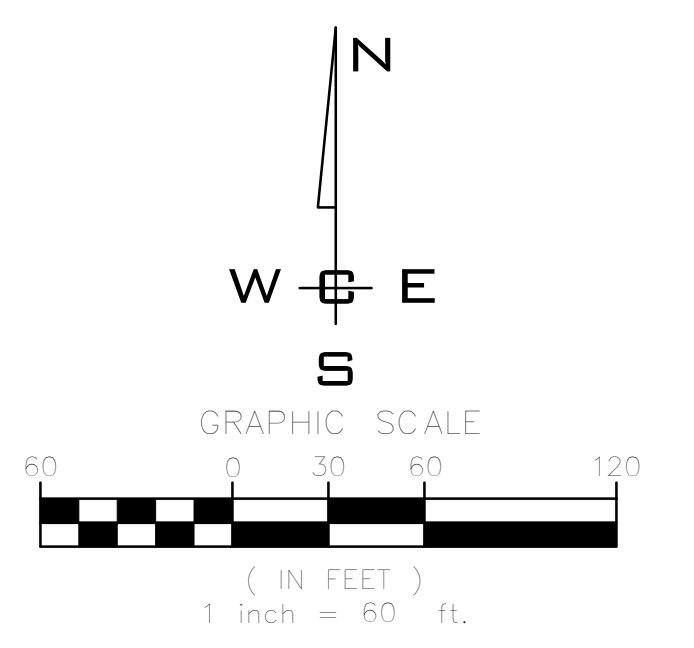
VICINITY MAP

PHASING
 PHASE 1: 27 LOTS
 PHASE 2: 33 LOTS
 PHASE 3: 38 LOTS

SURVEYOR/CONTACT
 WHIPPLE CONSULTING ENGINEERS
 21 S. PINES ROAD
 SPOKANE VALLEY, WA 99216
 PHONE: 509-893-2617
 CONTACT: DAVID COWELL P.L.S.
 DCOWELL@WHIPPLECE.COM

ENGINEER/CONTACT
 WHIPPLE CONSULTING ENGINEERS
 21 S. PINES ROAD
 SPOKANE VALLEY, WA 99216
 PHONE: 509-893-2617
 CONTACT: RAY KIMBALL, P.E.
 RKIMBALL@WHIPPLECE.COM

PROPERTY OWNER
 OO LAND HOLDINGS, LLC
 19425 E BROADWAY AVE
 SPOKANE VALLEY, WA 99016
 509.241.3555 SCOTT KRAJACK



PRELIMINARY STREET SECTION

NAVD - 88
XXXX

NO.	DATE	BY	REVISIONS

SCALE:	PROJ #: 18-2178
HORIZONTAL:	DATE: 3/12/19
1"=60'	DRAWN: RDK
VERTICAL:	REVIEWED: TRW

WCE
 WHIPPLE CONSULTING ENGINEERS
 21 SOUTH PINES ROAD
 SPOKANE VALLEY, WA 99206
 PH: 509-893-2617 FAX: 509-926-0227

**THE SUMMIT
PRELIMINARY LONG PLAT
LATAH VALLEY
SPOKANE, WA**



**SHEET
2 OF 2**
 JOB NUMBER
18-2178