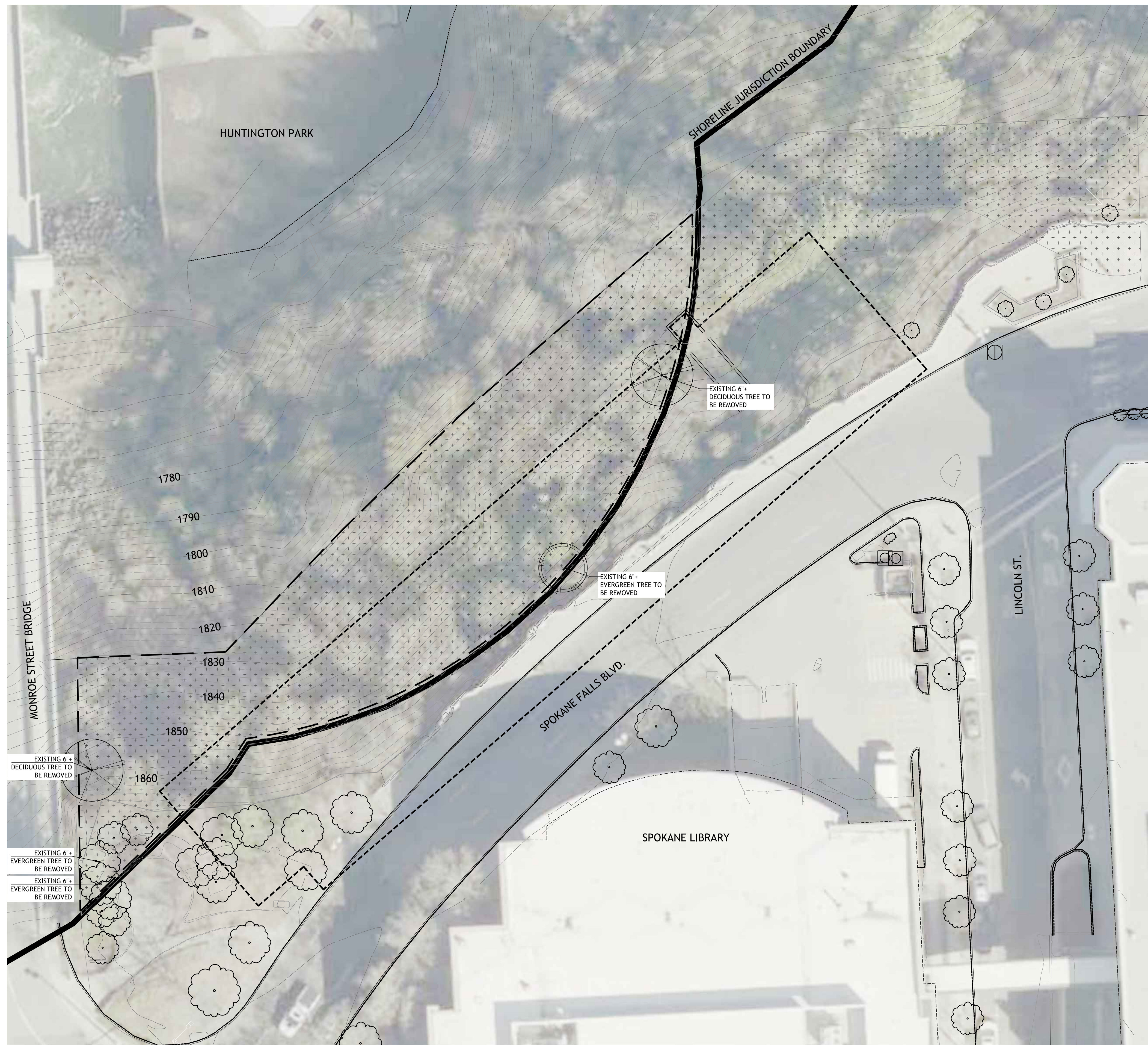


8/5/2016 3:44 PM P:\2016\16-210 CSO Tank 26 Plaza\dwg\16-8-4 CSO 26 Restoration Plan.dwg



RESTORATION PLAN

SHORELINE VEGETATION REPLACEMENT RATIOS				
VEGETATION REMOVED	REQUIRED REPLACEMENT RATIO	SITE VEGETATION TO BE REMOVED/DISTURBED	PROPOSED RATIO	QTY.
NATIVE DECIDUOUS TREES LESS THAN 6" CALIPER	1:1 REPLACEMENT RATIO; REPLACEMENT TREE(S) MUST BE A MINIMUM 2.5" CALIPER	NUMBER OF NATIVE DECIDUOUS TREES LESS THAN 6" CALIPER WITHIN THE SHORELINE JURISDICTION DISTURBANCE AREA IS ASSUMED AS (50) TREES	INSTALL 4 NEW NATIVE DECIDUOUS TREE PLUGS FOR EVERY ONE DECIDUOUS TREE LESS THAN 6" CALIPER REMOVED - (50) REMOVED = 200 NEW DECIDUOUS TREE PLUGS (SEE PLANT SCHEDULE FOR TYPES AND QUANTITIES) *NOTE: WHERE SOIL CONDITIONS ALLOW, 1" CALIPER TREES MAY REPLACE 4 TREE PLUGS.	200 PLUGS
NATIVE DECIDUOUS TREES OVER 6" CALIPER	2:1 REPLACEMENT RATIO; REPLACEMENT TREE(S) MUST BE A MINIMUM 2.5" CALIPER	(2) NATIVE DECIDUOUS TREES OVER 6" WERE INVENTORIED WITHIN THE SHORELINE JURISDICTION DISTURBANCE AREA	INSTALL 8 NEW NATIVE DECIDUOUS TREE PLUGS FOR EVERY ONE DECIDUOUS TREE OVER 6" CALIPER REMOVED - (2) REMOVED = 16 NEW DECIDUOUS TREE PLUGS (SEE PLANT SCHEDULE FOR TYPES AND QUANTITIES) *NOTE: WHERE SOIL CONDITIONS ALLOW, 1" CALIPER TREES MAY REPLACE 4 TREE PLUGS.	16 PLUGS
NATIVE EVERGREEN TREES LESS THAN 6" CALIPER	1:1 REPLACEMENT RATIO; REPLACEMENT TREES MUST BE A MINIMUM 4" CALIPER	NUMBER OF NATIVE EVERGREEN TREES LESS THAN 6" CALIPER WITHIN THE SHORELINE JURISDICTION DISTURBANCE AREA IS ASSUMED AS (0)	INSTALL 4 NEW NATIVE EVERGREEN TREE PLUGS FOR EVERY ONE EVERGREEN TREE LESS THAN 6" CALIPER REMOVED - (0) REMOVED = 0 NEW DECIDUOUS TREE PLUGS (SEE PLANT SCHEDULE FOR TYPES AND QUANTITIES) *NOTE: WHERE SOIL CONDITIONS ALLOW, 1" CALIPER TREES MAY REPLACE 4 TREE PLUGS.	0 PLUGS
NATIVE EVERGREEN TREES OVER 6" CALIPER	2:1 REPLACEMENT RATIO; REPLACEMENT TREES MUST BE A MINIMUM OF 4" CALIPER	(3) NATIVE EVERGREEN TREES OVER 6" WERE INVENTORIED WITHIN THE SHORELINE JURISDICTION DISTURBANCE AREA	INSTALL 8 NEW NATIVE EVERGREEN TREE PLUGS FOR EVERY ONE EVERGREEN TREE OVER 6" CALIPER REMOVED - (3) REMOVED = 24 NEW EVERGREEN TREE PLUGS (SEE PLANT SCHEDULE FOR TYPES AND QUANTITIES) *NOTE: WHERE SOIL CONDITIONS ALLOW, 1" CALIPER TREES MAY REPLACE 4 TREE PLUGS.	24 PLUGS
NATIVE SHRUBS	1:1 REPLACEMENT RATIO; REPLACEMENT SHRUB(S) MUST BE AT A MINIMUM 12"-18" IN DIAMETER (AT HEAD)	NUMBER OF NATIVE SHRUBS WITHIN THE SHORELINE JURISDICTION DISTURBANCE AREA IS ASSUMED AS 1 SHRUB EVERY 50 SQ. FT.	INSTALL 1 NEW NATIVE SHRUB EVERY 50 SQ. FT. OF DISTURBED AREA WITHIN THE SHORELINE JURISDICTION - DISTURBED AREA IS 18,756 SQ. FT. = 375 NEW SHRUBS (SEE PLANT SCHEDULE FOR TYPES AND QUANTITIES) *NOTE: WHERE SOIL CONDITIONS ALLOW, 1 GALLON PLANTS MAY REPLACE PLUGS AND 4" POTS.	375 PLUGS OR 4" POTS
NATIVE GROUNDCOVER	1:1 REPLACEMENT RATIO; REPLACEMENT GROUNDCOVER(S) MUST BE AT A MINIMUM 4" IN DIAMETER (AT POT)	NATIVE GROUNDCOVER WITHIN THE SHORELINE JURISDICTION DISTURBANCE AREA IS PRIMARILY BUNCHGRASS	ENTIRE DISTURBED AREA WITHIN THE SHORELINE JURISDICTION WILL BE SEEDED WITH AN EROSION CONTROL MIX. (SEE PLANT SCHEDULE FOR TYPES AND QUANTITIES).	

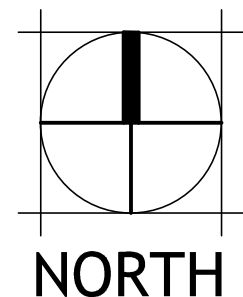
PLANT REPLACEMENT SCHEDULE

QTY.	DECIDUOUS TREES: TOTAL TREES 216		
125	AG ACER GINNALA	AMUR MAPLE	40 CI PLUG OR 1" CAL.
91	RG RHUS GLABRA	SUMAC	40 CI PLUG OR 1" CAL.
QTY.	EVERGREEN TREES: TOTAL TREES 24		
24	PP PINUS PONDEROSA	PONDEROSA PINE	40 CI PLUG
QTY.	SHRUBS: TOTAL SHRUBS 375		
60	AA AMELANCHIER ALNIFOLIA	SASKATOON SERVICEBERRY	40 CI PLUG
30	CR CALAMAGROSTIS RUBESCENS	PINEGRASS	4" POT
20	CS CORNUS SERICEUS	REDOSIER DOGWOOD	40 CI PLUG
50	HD HOLODISCUS DISCOLOR	OCEAN SPRAY	40 CI PLUG
30	MR MAHONIA REPENS	CREeping MAHONIA	4" POT
50	PL PHILADELPHUS LEWISII	MOCK ORANGE	40 CI PLUG
60	PM PHYSOCARPUS OPULIFOLIUS	MALLOW NINEBARK	40 CI PLUG
40	RW ROSA WOODSII	WOODS ROSE	40 CI PLUG
35	SA SYMPHORICARPOS ALBUS	COMMON SNOWBERRY	40 CI PLUG
QTY.	GROUNDCOVER		
	SEED MIX - EROSION CONTROL MIX - PLANTS OF THE WILD		

*EXTENTS OF SEEDING APPROXIMATELY 26,341 SQ. FT. AT A RATE OF 2 POUNDS PER 1000 SQ. FT.

LEGEND

- EXTENT OF DISTURBANCE WITHIN THE SHORELINE JURISDICTION (APPROXIMATELY 18,756 SQ. FT.)
- DESIGNATED VEGETATION RESTORATION AREA AND EXTENTS OF SEEDING
- SHORELINE JURISDICTION BOUNDARY
- LOCATION OF PROPOSED TANK
- EXISTING TOPOGRAPHY



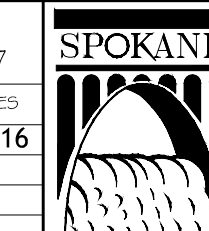
1 VEGETATION RESTORATION PLAN

SCALE: 1" = 20'-0"



DATE	BY	PROJ.	DESCRIPTION	DATE	BY	PROJ.	E.F.N.	U.S.N.	FROM	TO	COUNCIL ACCEPT DATE	FROM	TO	ORD. NO.	DATE	FILE NO.
			REVISIONS						AS BUILT							

NAVDS# ELEV: 926.46	AS OF JANUARY, 2000 USE NORTH AMERICAN VERTICAL DATUM OF 1988 (NAVDS#)	CURRENT C.O.S. DRAFTING STANDARDS ADOPTED FEB. 2007
BAR IS ONE INCH ON ORIGINAL DRAWING	HORIZONTAL PLAN/PROFILE	BY: JC
IF NOT ONE INCH ON THIS SHEET, ADJUST SCALES ACCORDINGLY	VERTICAL PROFILE ONLY	REVISED: 8/5/16
	SCALE	DESIGN: JC
		APPROVED:



CITY OF SPOKANE, WASHINGTON
DEPARTMENT OF ENGINEERING SERVICES
808 WEST SPOKANE FALLS BLVD.
SPOKANE, WASHINGTON 99201-3343
(509) 625-6700



PROJECT NAME: SPOKANE FALLS CSO 26 CONTROL FACILITY	
SEGMENT LIMITS:	TYPE OF IMPROVEMENT:
PROJECT LIMITS:	CITY PROJECT NUMBER: 2010088
	CITY PLAN NUMBER: SPOKA B(1)2 18-25-43
CALL BEFORE YOU DIG 1-800-424-5555	

L1.0
1 OF 1