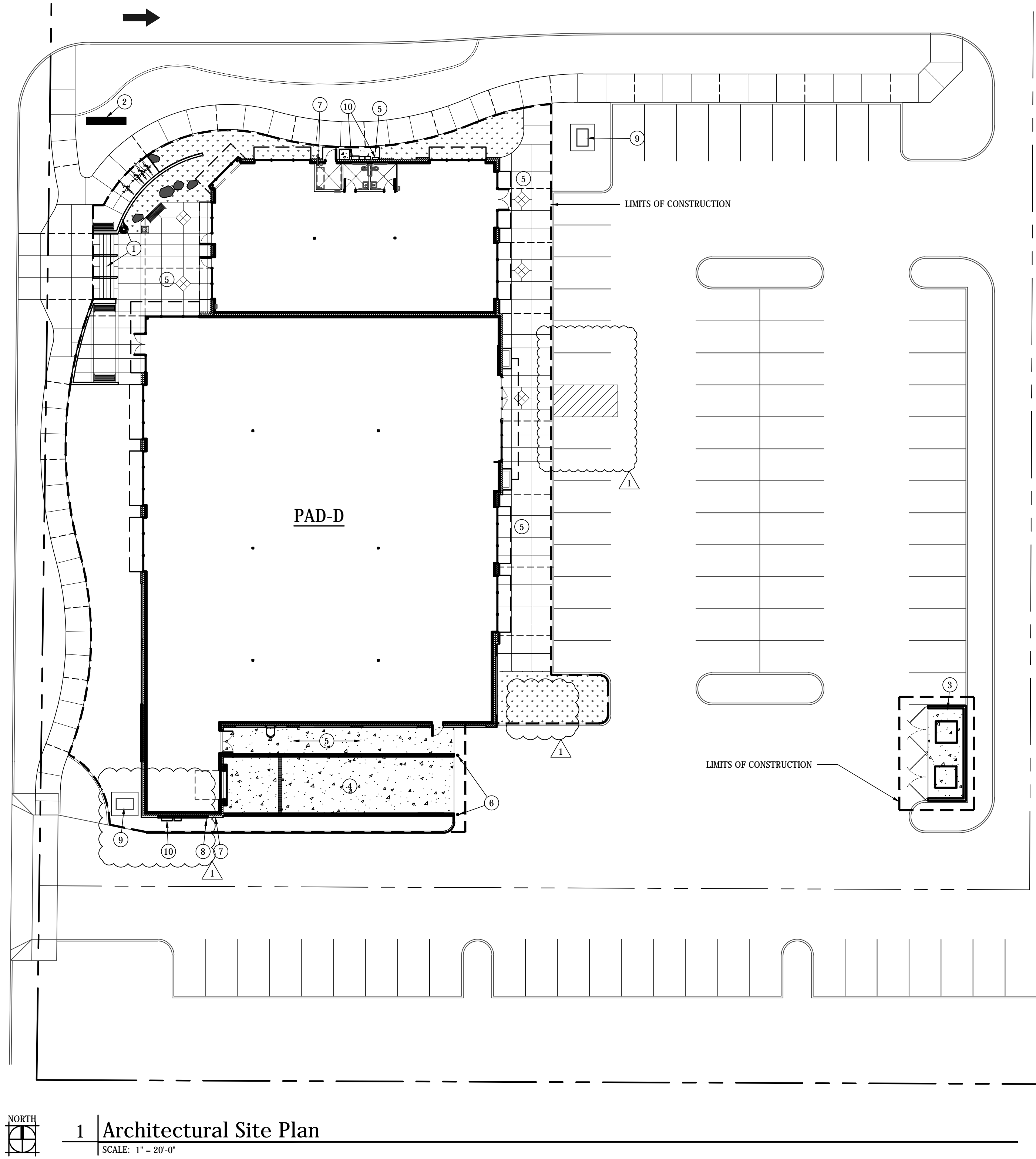


Site Plan Keyed Notes

1. RETAINING WALL & STAIRS , SEE LANDSCAPE.
2. SHOPPING CENTER IDENTIFICATION SIGN UNDER SEPARATE PERMIT
3. TRASH ENCLOSURE w/ RECYCLING COLLECTION, SEE 12/A1.2. FURNISH & INSTALL 2" PRIMED FLOOR DRAIN, TIGHTLINE TO SANITARY SEWER, SEE CIVIL.
4. 6" THICK CONCRETE TRUCK APRON.
5. CONC. WALK w/ SLOPE & SIDESLOPE IN ACCORDANCE WITH ANSI-117.1-2003 & ADA.
6. 6" CONC. FILLED STL. PIPE BOLLARD. PAINT AND LOCATE PER TENANT SPECIFICATION, COORDINATE w/ TENANT PRIOR TO CONSTRUCTION. SEE 19/A1.2.
7. WATER EQUIPMENT. COORDINATE TYPE, SIZE & LOCATION w/ UTILITY PROVIDER PRIOR TO PRODUCT ORDER AND INSTALLATION, SEE CIVIL.
8. GAS METER & EQUIPMENT. COORDINATE TYPE, SIZE & LOCATION w/ UTILITY PROVIDER PRIOR TO PRODUCT ORDER AND INSTALLATION.
9. GROUND MOUNTED ELECTRICAL TRANSFORMER & REQ'D CONC. PAD. COORDINATE TYPE, SIZE & LOCATION w/ UTILITY PROVIDER PRIOR TO PRODUCT ORDER AND INSTALLATION, SEE CIVIL.
10. ELECTRICAL METER & EQUIP. COORDINATE TYPE, SIZE & LOCATION w/ UTILITY PROVIDER PRIOR TO PRODUCT ORDER AND INSTALLATION, SEE ELECTRICAL.

Graphic Legend

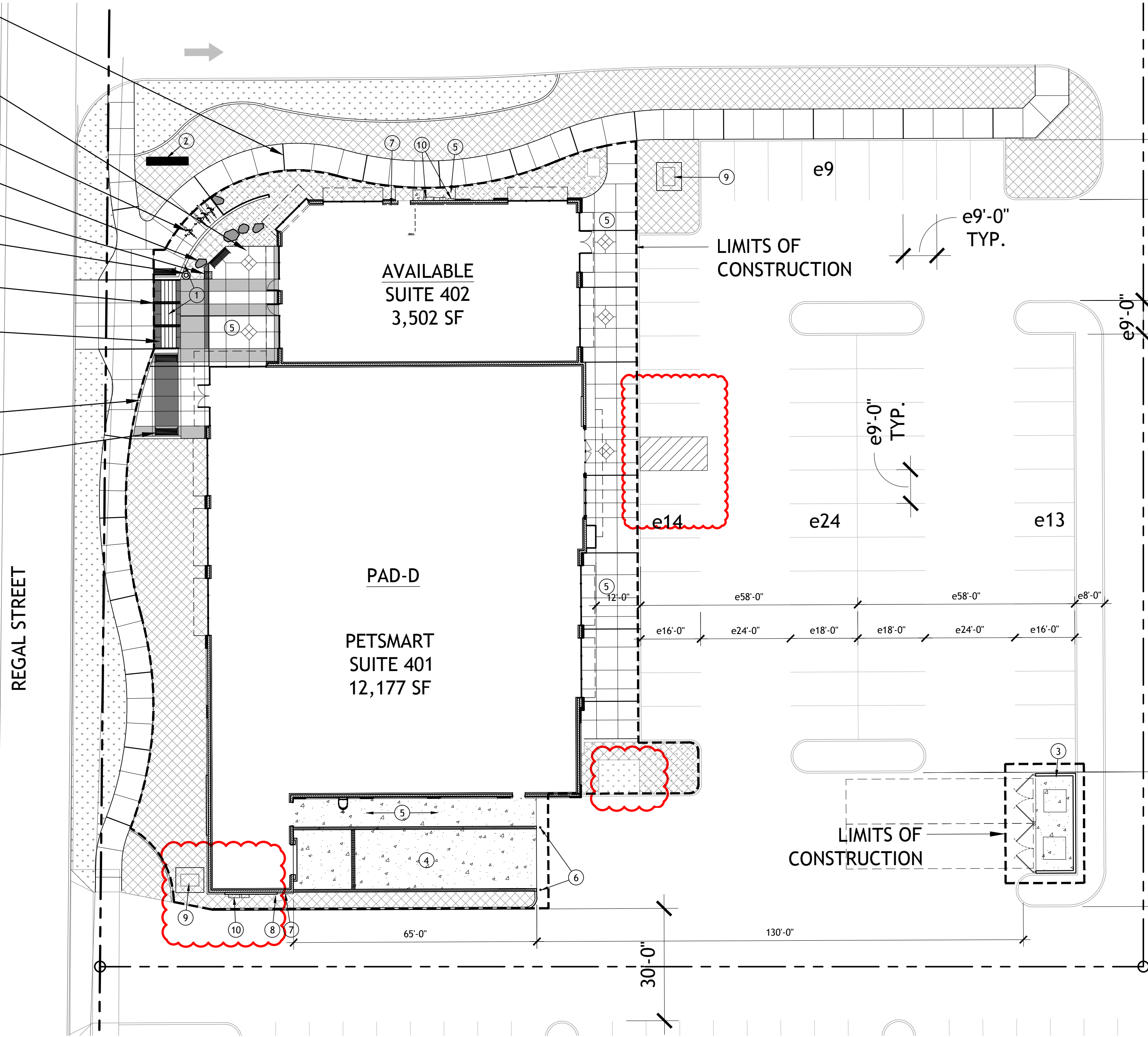
- LANDSCAPED AREA, SEE LANDSCAPE PLAN
- STANDARD BROOM FINISH CONCRETE
- STAMPED/PATTERN FINISH CONCRETE
- LIMITS OF CONSTRUCTION



UTILITY STATEMENT  
LOCATION OF EXISTING UNDERGROUND UTILITIES  
HAVE BEEN TAKEN FROM DRAWINGS AND FIELD  
LOCATES SUPPLIED BY THE APPROPRIATE  
UTILITY COMPANIES. UTILITY LOCATIONS  
SHOWN ON THIS DRAWING ARE APPROXIMATE  
ONLY. PRIOR TO BEGINNING ANY  
CONSTRUCTION, THE CONTRACTOR SHALL  
VERIFY THE EXACT LOCATION OF EACH UTILITY.

UNDERGROUND SERVICE ALERT  
ONE-CALL NUMBER  
811  
CALL TWO BUSINESS DAYS  
BEFORE YOU DIG

- 4 EXPANSION & CONTRACTION JOINTS L-5
- 5 CONCRETE FLATWORK L-5
- 3 BIKE RACK L-7
- 3 BOULDER DETAIL L-5
- 4 TRASH RECEPTACLE L-7
- 2 LIGHT COLUMN L-7
- 6 STAIRWAY MIDDLE HANDRAILS L-5
- 7 STAIRWAY L-5
- 5 RETAINING WALL/GUARDRAIL L-7
- 1 BENCH L-7



NORTH  
Materials Plan  
SCALE: 1" = 20'-0"

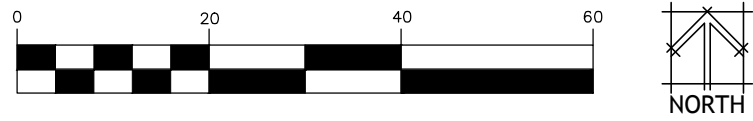
- Legend
- COLORED CONCRETE FLATWORK  
COLOR:
  - COLORED CONCRETE FLATWORK  
COLOR:
  - LAWN AREA, (NIC) PER TARGET DEVELOPMENT
  - LANDSCAPE PLANTING BED -  
TOPDRESSING - OF "TUSCAN PATHWAY". BY WITTKOPF OR EQUAL.  
FRACTURED BASALT BOULDERS. APPROVAL BY LANDSCAPE  
ARCHITECT REQUIRED PRIOR TO DELIVERY TO SITE. SIZE  
SHALL BE EQUALLY DIVIDED INTO 3 SIZE RANGES: 2"-3",  
3"-4", AND 4"-5". USED DRAWINGS AS GUIDE TO SIZE  
PLACEMENT ON SITE.
  - BENCH
  - TRASH RECEPTACLE
  - LIGHT COLUMN
  - EXPANSION JOINT, SEE JOINT DETAIL #6 ON SHT L-5
  - CONTROL JOINT, SEE JOINT DETAIL #6 ON SHT L-5
  - 2 L6  
DETAIL NUMBER  
PAGE NUMBER  
DETAIL CALLOUT

- General Notes
- CONTRACTOR TO VERIFY LOCATION OF ALL UTILITIES PRIOR TO INITIATION OF ANY DEMOLITION OR CONSTRUCTION OPERATIONS. ANY DAMAGE TO EXISTING UTILITIES ON SITE OR ADJACENT PROPERTY SHALL BE CONTRACTOR'S RESPONSIBILITY TO CORRECT.
  - COORDINATE ALL DEMOLITION AND CONSTRUCTION OPERATION WITH ARCHITECTURAL, CIVIL, AND ELECTRICAL ENGINEERING SHEETS.
  - COORDINATE INSTALLATION OF ELECTRICAL AND IRRIGATION CONDUIT AND SLEEVES WITH RESPECTIVE CONTRACTORS
  - WHEREVER CONCRETE FLATWORK ABUTS BUILDING, WALL OR COLUMNS IT SHALL HAVE AN EXPANSION JOINT.
  - PROVIDE TOOLED SCORE JOINTS AS SHOWN ON PLANS. SCORE JOINTS ARE AN INTEGRAL PART OF THE DESIGN AND SHALL NOT VARY FROM PATTERNS AND LOCATIONS SHOWN. CONTRACTOR SHALL REMOVE ANY FLATWORK THAT DOES NOT CONFORM TO DESIGN.
  - CONTRACTOR SHALL REFER TO SPECIFICATIONS FOR ADDITIONAL REQUIREMENTS.
  - CONTRACTOR RESPONSIBLE FOR CORRECTING ANY DAMAGE TO NEW OR EXISTING CONCRETE FLATWORK, ASPHALT, TURF AREAS OR ANY OTHER EXISTING ELEMENTS AS A RESULT OF CONSTRUCTION ACTIVITIES.
  - IN THE EVENT OF A DISCREPANCY, IMMEDIATELY NOTIFY LANDSCAPE ARCHITECT.
  - REFER TO PLANTING PLANS FOR "SOFT" MATERIAL LOCATIONS.
  - REFER TO DETAIL DRAWINGS AND SPECIFICATIONS FOR ACTUAL CONSTRUCTION REQUIREMENTS.
  - COLORED CONCRETE SHALL BE "COLOR GROUP: PREMIUM" @ 4# PER SACK
  - IN THE EVENT OF A DISCREPANCY, IMMEDIATELY NOTIFY LANDSCAPE ARCHITECT.
  - ALL RETAINING WALLS AND SEAT CAPS SHOWN ON PLANS SHALL RECEIVE ANTI-GRAFFITI COATING



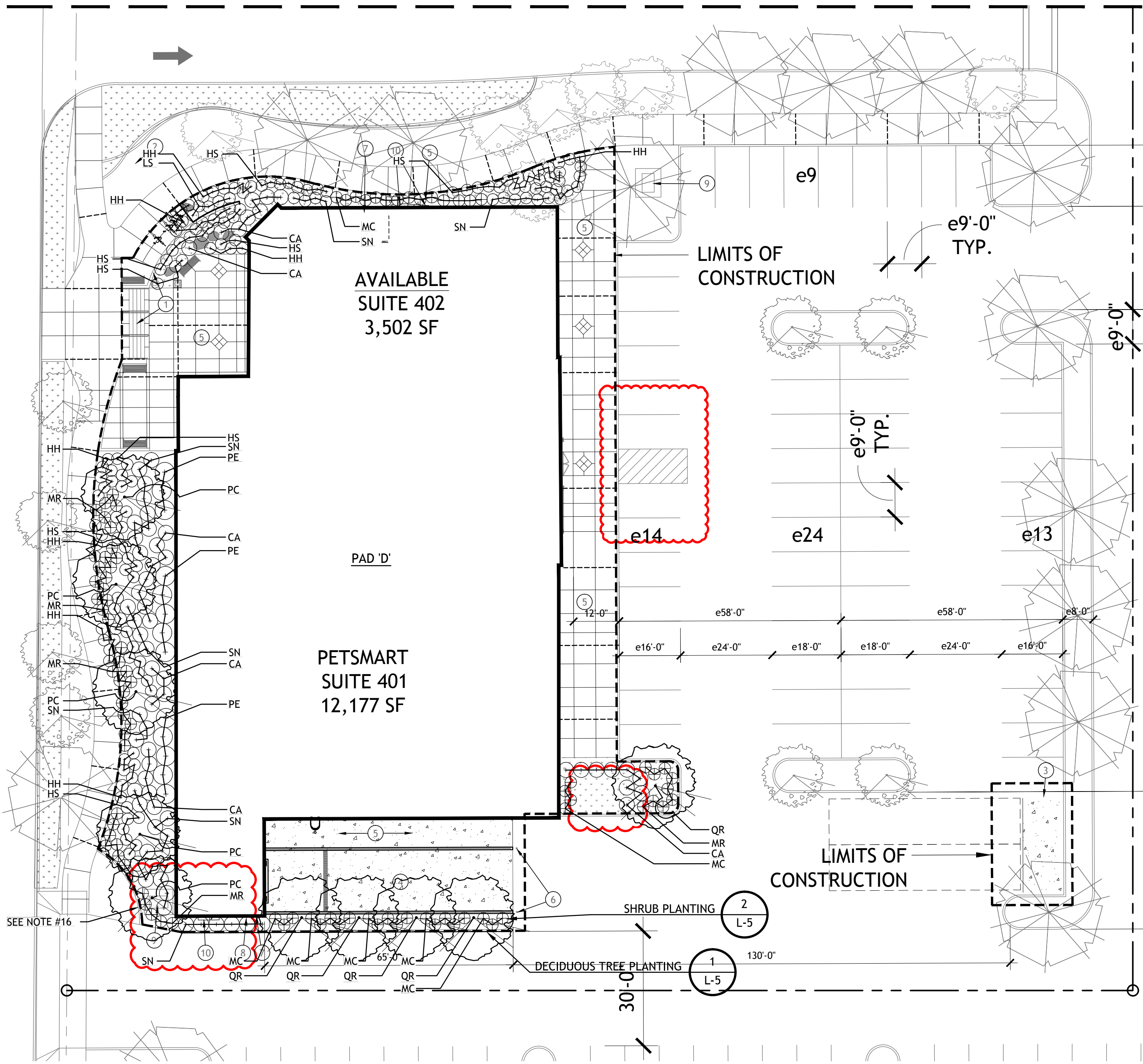
UTILITY STATEMENT  
LOCATION OF EXISTING UNDERGROUND UTILITIES HAVE BEEN TAKEN FROM DRAWINGS AND FIELD LOCATES SUPPLIED BY THE APPROPRIATE UTILITY COMPANIES. UTILITY LOCATIONS SHOWN ON THIS DRAWING ARE APPROXIMATE ONLY. PRIOR TO BEGINNING ANY CONSTRUCTION, THE CONTRACTOR SHALL VERIFY THE EXACT LOCATION OF EACH UTILITY.

UNDERGROUND SERVICE ALERT  
ONE-CALL NUMBER  
811  
CALL TWO BUSINESS DAYS BEFORE YOU DIG

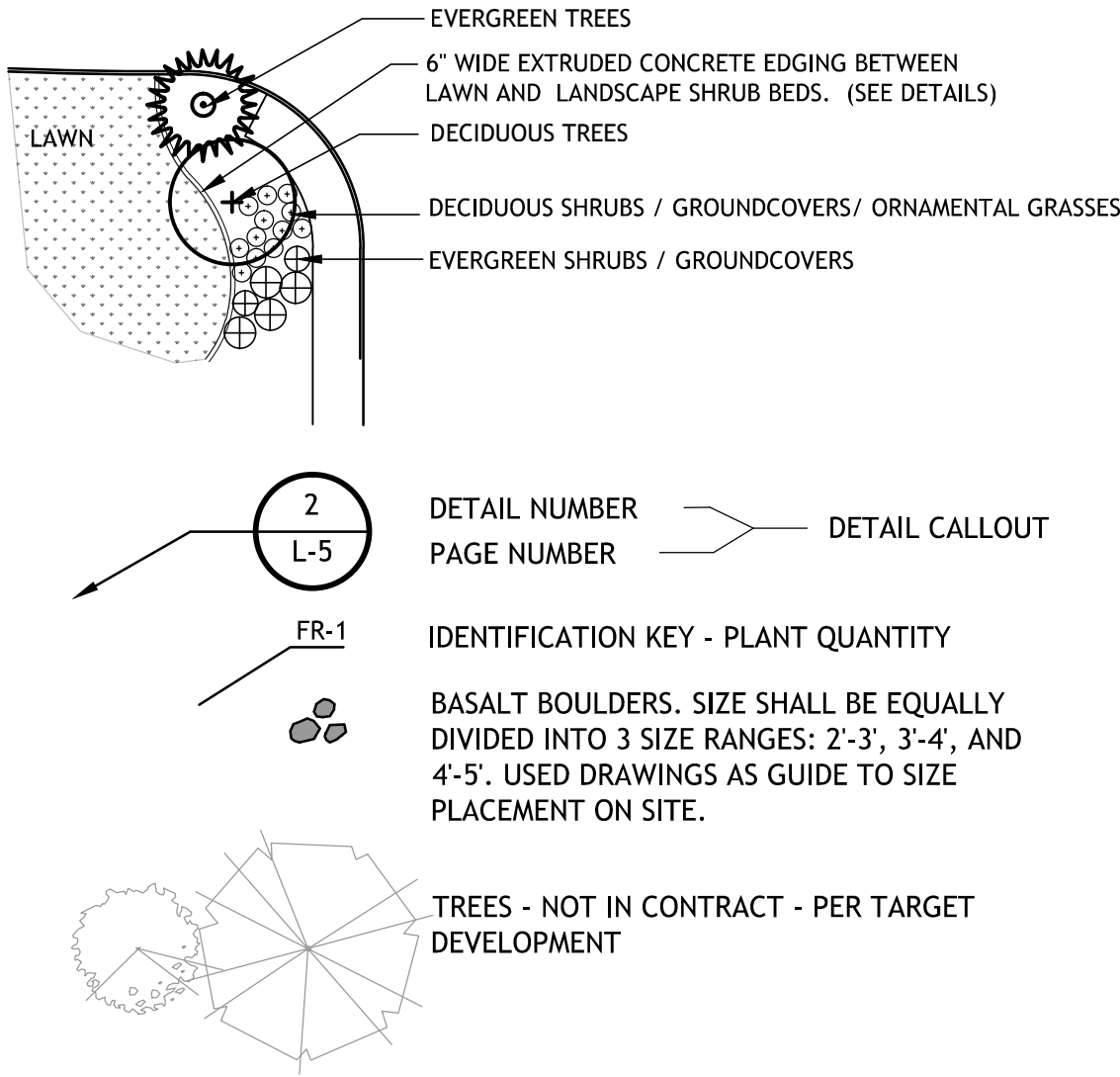


Landscape Planting Plan

SCALE: 1" = 20'-0"



LEGEND



PLANT LIST - TREES					
KEY	NO.	BOTANICAL - COMMON NAME	SIZE	TYPE	REMARKS
LARGE TREES					
QS	-	QUERCUS ROBUR X Q. ALBA - CRIMSON SPIRE OAK	3" CAL.	B&B	MATCHED
SMALL & FLOWERING TREES					
PC	-	PRUNUS SARGENTII 'COLUMNARIS' - COLUMNAR SARGENT CHERRY	2.5" CAL.	B&B	MATCHED

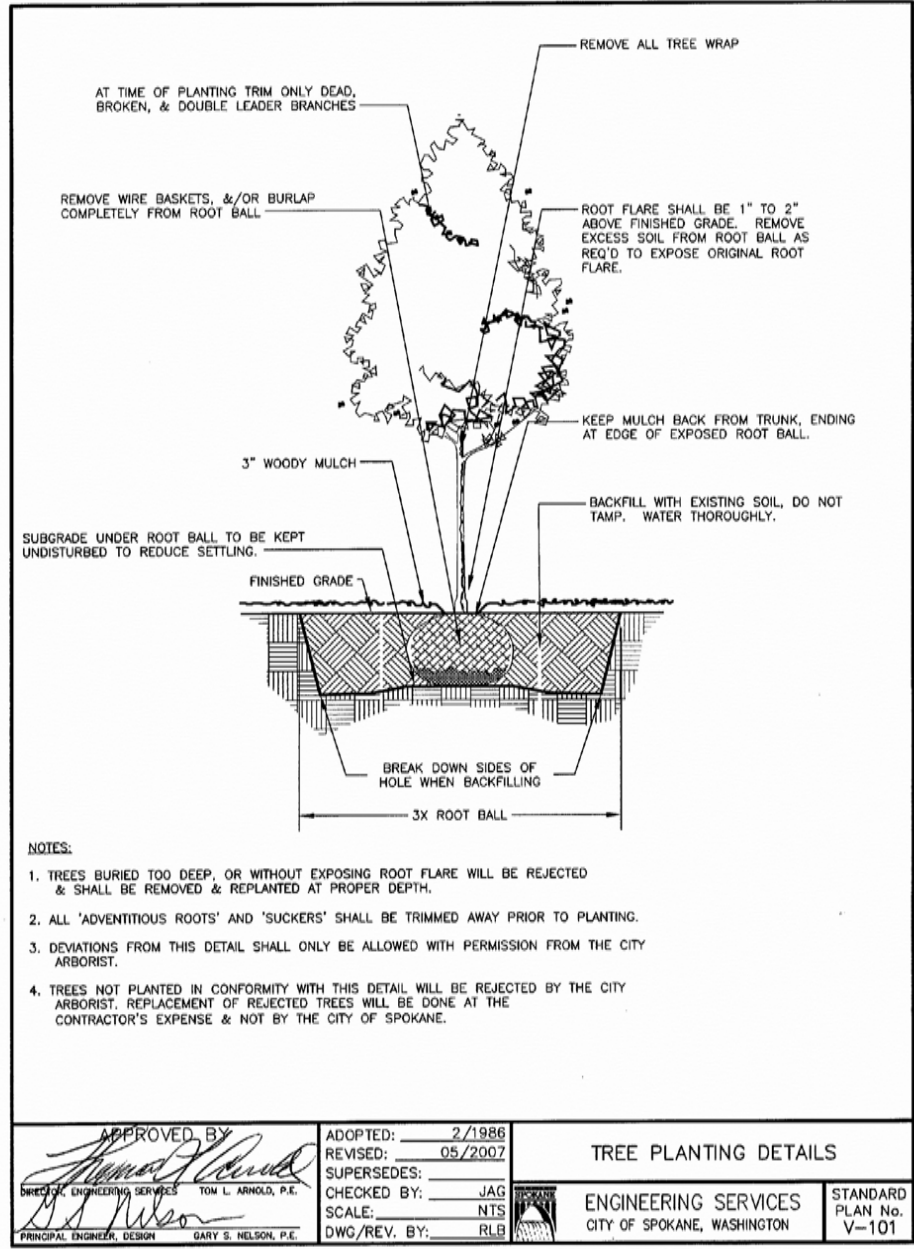
45H X 15W  
30H X 15W

PLANT LIST - SHRUBS / GROUNDCOVERS					
KEY	TOTAL NO.	BOTANICAL - COMMON NAME	SIZE	TYPE	REMARKS
SHRUBS					
HH	-	HEMEROCALLIS X 'STELLA DE ORO' - STELLA DE ORO DWARF DAYLILLY	1 GAL.	CONT.	MATCHED
LS	-	LAVANDULA STOECHAS 'LARKMAN HAZEL' - HAZEL SPANISH LAVENDER	2 GAL.	CONT.	MATCHED
MC	-	MAHONIA AQUIFOLIUM 'COMPACTA' - COMPACT OREGON GRAPE	2 GAL.	CONT.	MATCHED
PE	-	PHYSOCARPUS OPULIFOLIUS 'SEWARD' - SUMMER WINE NINEBARK	5 GAL.	CONT.	MATCHED
SN	-	SPIRAEA NIPPONICA 'SNOWMOUND' - SNOWMOUND SPIREA	2 GAL.	CONT.	MATCHED
GROUNDCOVERS					
MR	-	MAHONIA REPENS - CREEPING MAHONIA	1 GAL.	CONT.	MATCHED
ORNAMENTAL GRASSES					
CA	-	CALAMAGROSTIS X ACUTIFLORA 'KARL FOERSTER' - FEATHER REED GRASS	2 GAL.	CONT.	MATCHED
HS	-	HELICOTRICHON SEMPERVIRENS - BLUE OAT GRASS	2 GAL.	CONT.	MATCHED
TURF GRASS					
-	-	SOD - NOT IN CONTRACT - PER TARGET DEVELOPMENT			

NOTES

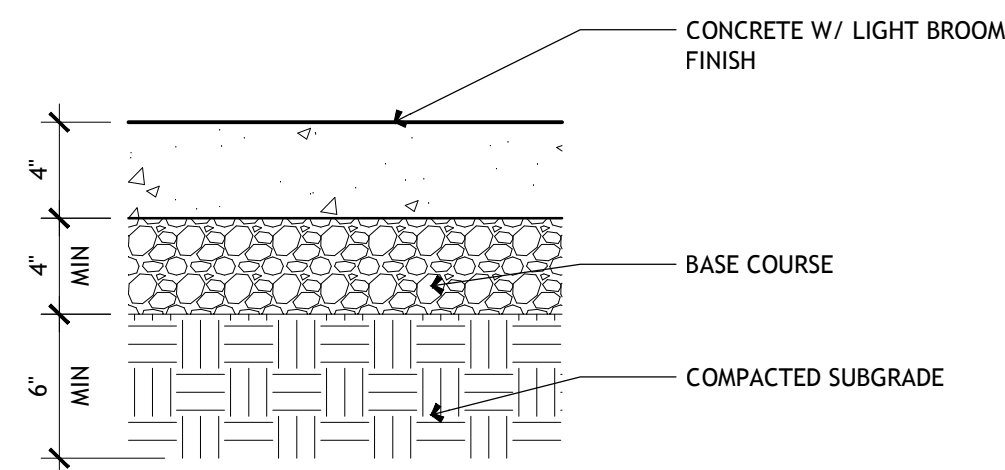
- CONTRACTOR TO VERIFY LOCATION OF ALL UTILITIES PRIOR TO INITIATION OF ANY DEMOLITION OR CONSTRUCTION OPERATIONS.
- ANY DAMAGE TO EXISTING UTILITIES ON SITE OR ADJACENT PROPERTY SHALL BE CONTRACTOR'S RESPONSIBILITY.
- ALL PLANT MATERIAL SHALL CONFORM TO THE AMERICAN ASSOCIATION OF NURSERYMANS; AMERICAN STANDARD FOR NURSERY STOCK, ANSI Z60.1-2004, FOR ADDITIONAL PLANT REQUIREMENTS.
- ALL PLANT MATERIAL SHALL BE INSTALLED AS PER DETAILS.
- CONTRACTOR SHALL VERIFY ALL QUANTITIES. IN THE CASE OF A DISCREPANCY BETWEEN THE PLANT SCHEDULE AND PLAN, THE PLAN LOCATIONS SHALL DICTATE COUNT.
- CONTRACTOR SHALL COORDINATE PLANTING WITH IRRIGATION CONTRACTOR.
- NO SUBSTITUTIONS WILL BE ALLOWED WITHOUT THE WRITTEN CONSENT OF THE LANDSCAPE ARCHITECT.
- THE TOP SOIL LAYER OF ALL TURF AREAS SHALL RECEIVE (4") OF TOPSOIL MIX (COMPOST MIXED WITH NATIVE SOIL AT A RATE OF 25% COMPOST TO NATIVE SOIL).
- ALL PLANTING BEDS SHALL HAVE AN 18" DEPTH OF TOPSOIL MIX (COMPOST MIXED WITH NATIVE SOIL AT A RATE OF 25% COMPOST TO NATIVE SOIL).
- ALL SHRUB BEDS SHALL RECEIVE A MIN. OF 3" DEPTH OF "TUSCAN PATHWAY". BY WITTKOPF OR EQUAL.
- SHRUB BED EDGING SHALL BE 6" X 6" EXTRUDED CONCRETE. IT SHALL SEPARATE ALL TURF AREAS FROM PLANTING BED LOCATIONS. SEE PLANS FOR SPECIFIC LOCATIONS.
- ALL PLANTS AND PLANT STAKES SHALL BE SET PLUMB UNLESS OTHERWISE NOTED.
- ALL ROOT WRAPPING MATERIAL MADE OF SYNTHETICS SHALL BE REMOVED AT THE TIME OF PLANTING.
- NO BARE ROOT STOCK SHALL BE USED UNLESS OTHERWISE NOTED IN CONTRACT DOCUMENTS.
- CONTRACTOR IS RESPONSIBLE FOR LOCATING PROPERTY LINES AND WORKING WITHIN THE PROPERTY BOUNDARY AND PROJECT LIMITS.
- REMOVE AND DISPOSE OF MOW CURB OFFSITE, WITH THE DEVELOPMENT OF THE LANDSCAPE AT PAD 'D'.
- ALL EXISTING LANDSCAPE SHALL BE PROTECTED THROUGHOUT THE CONSTRUCTION PROCESS. ANY LANDSCAPE DAMAGED DURING CONSTRUCTION SHALL BE REPLACED WITH SAME SIZE, TYPE, AND QUALITY PLANT AT NO ADDITIONAL COST TO THE OWNER.
- IN THE EVENT OF A DISCREPANCY, NOTIFY THE LANDSCAPE ARCHITECT IMMEDIATELY.





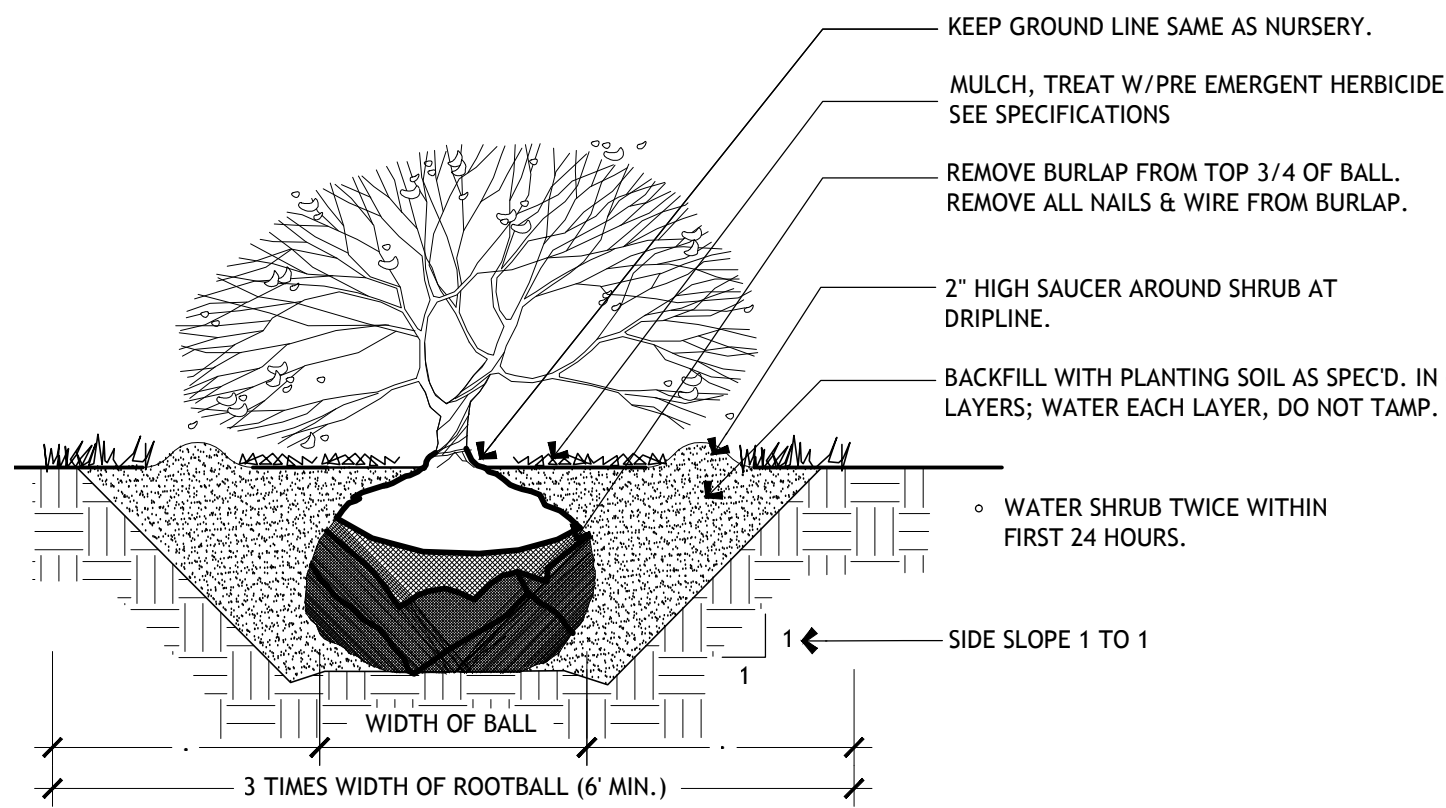
## 1 DECIDUOUS TREE PLANTING

SCALE: NTS



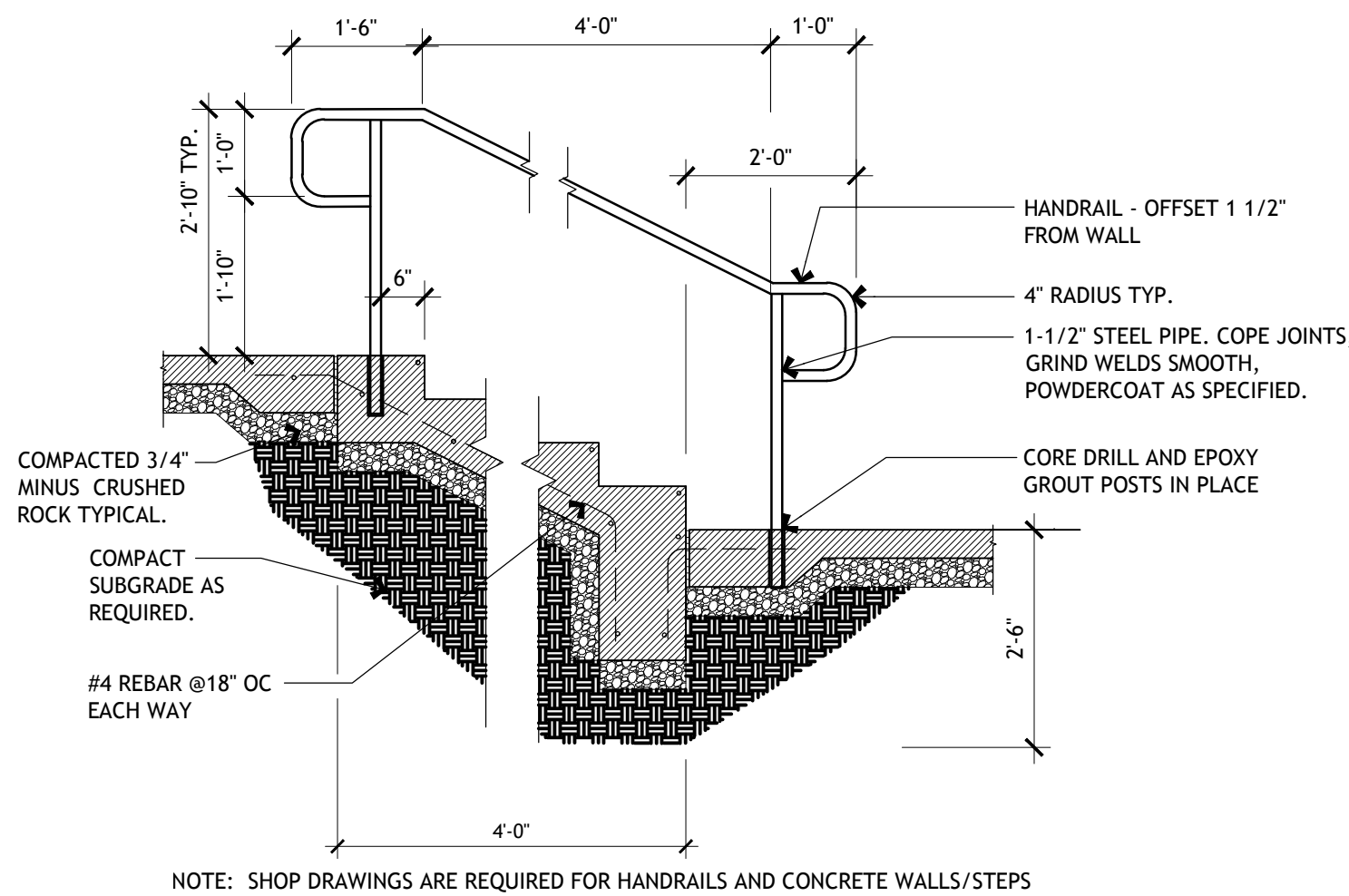
## 5 CONCRETE FLATWORK

SCALE: 1 1/2" = 1'-0"



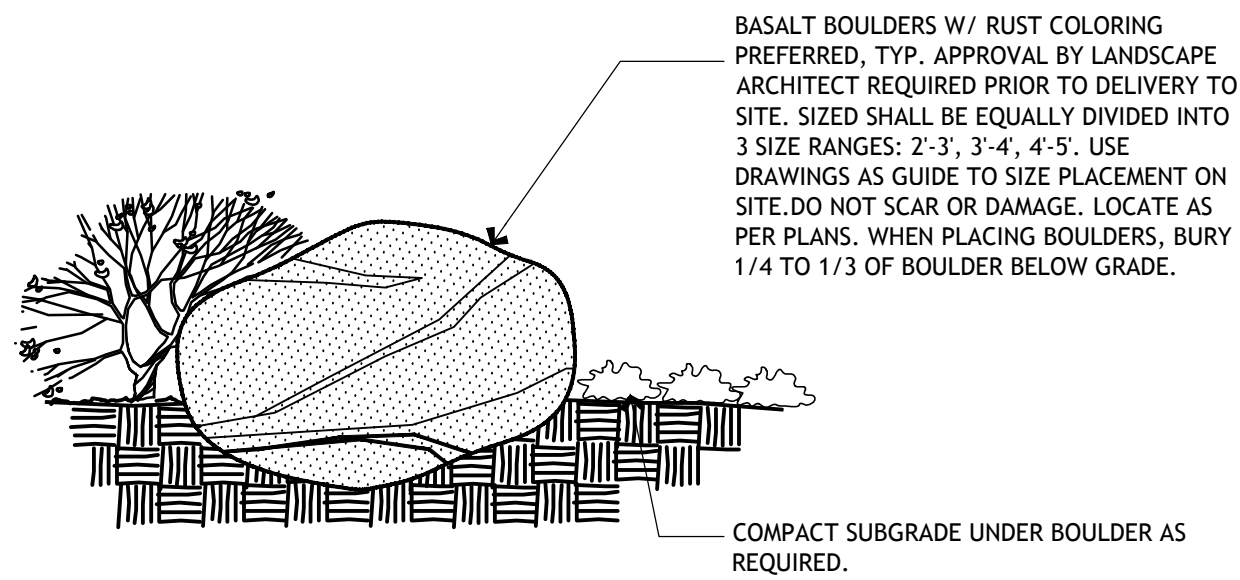
## 2 SHRUB PLANTING DETAIL

SCALE: NTS



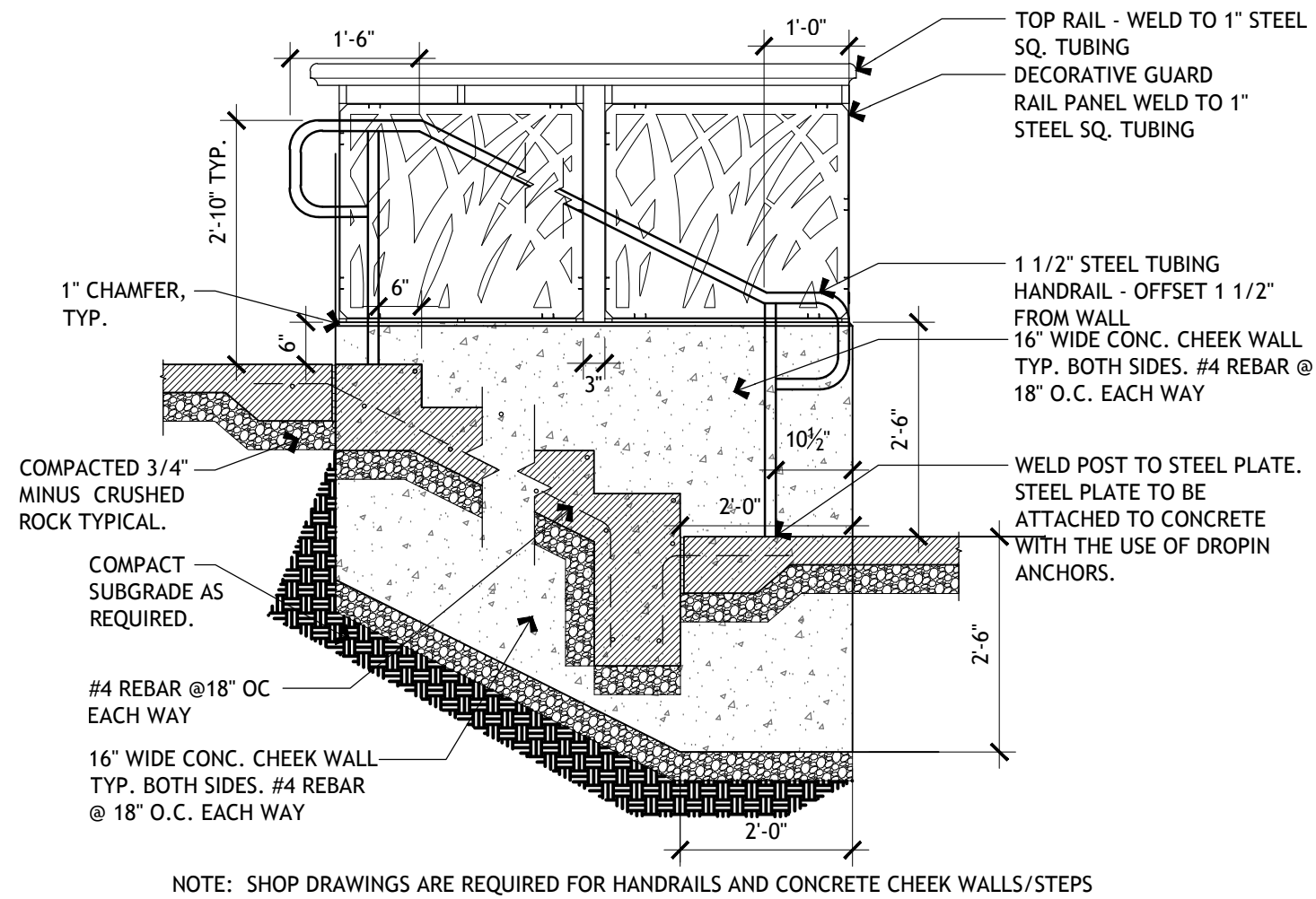
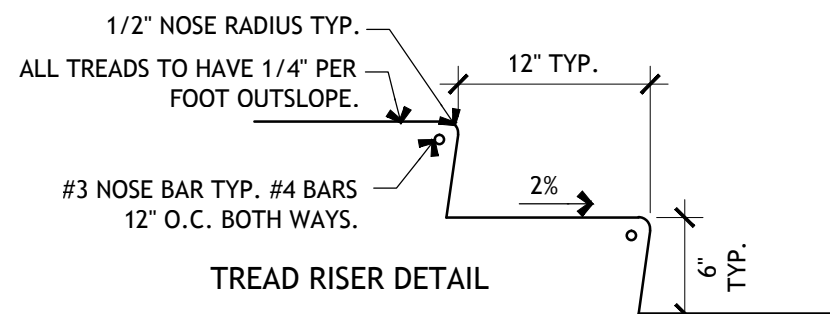
## 6 STAIRWAY - MIDDLE HANDRAILS

SCALE: 1/2" = 1'-0"



## 3 BOULDER PLACEMENT DETAIL

SCALE: NTS



## 7 STAIRWAY ELEVATION - SIDE HANDRAILS

SCALE: 1/2" = 1'-0"

## Construction Notes

### LANDSCAPE:

#### A. TOPSOIL AND FINE GRADING REQUIREMENTS:

- 1) Grading contractor must stockpile existing topsoil clean and debris free suitable for reuse.
- 2) Contractor must submit representative samples of the reserved topsoil, and soil in which the landscaping is to be installed, to a certified soil and plant laboratory for analysis. Take a minimum of two samples each from landscape areas adjacent to all four sides of building(s). The soil and plant laboratory report must provide recommendations for fertilizer and soil amendments that may be required to ensure healthy growth of turf and plant materials to be installed in the respective areas from which the soil samples were taken. Provide two copies of the report to the project landscape architect.
- 3) Grading contractor must spread minimum 6-inch topsoil layer to finish site grade, and 12-inch topsoil layer in sidewalk planters. Topsoil must:
  - a) Meet requirements of ASTM D5268;
  - b) Contain no more than 5% deleterious material by weight.
  - c) Contain not less than 80% material by weight that will pass a #10 sieve; and
  - d) Be free of clods, rocks, or debris greater than 1-inch diameter.

- 4) Landscape contractor must perform fine grading and soil amendments to the topsoil and/or approved import soil for all lawn and landscape areas as recommended by the soil analysis. Fine grading must:
  - a) Be within one-tenth of a foot of grades shown on the Site Construction Documents Grading Plan;
  - b) Transition smoothly between differing gradients.

- 5) If suitable topsoil is not available on site, imported topsoil shall meet specifications and shall be amended to meet recommendations from the certified soil and plant lab analysis.

- 6) Grades behind curbs for areas to receive mulch must be held 3 inches below top of curb and 2 inches below top of curb for sod. In well-draining soils island, and planter grades must be slightly concave sloping downward at not less than 5% and no greater than 20% from perimeter toward the middle. In poorly draining soils, island and planter grades must be slightly mounded sloping downward at not less than 5%, and no greater than 20%, from middle toward the perimeter.

#### B. PLANTING PITS:

- 1) Width of all planting pits must be two times the diameter of the root ball, or container of the plant being installed. Depth of all planting pits must be from the bottom of the root ball to the root flare, or container of the plant being installed, and must maintain a firm setting bed in the bottom of the planting pit to avoid settling;
- 2) Soil used in planting pits must be free of all construction materials, concrete, and rocks in excess of 1 inch diameter, and consist of 50% of the soil removed and 50% suitable amended soil or topsoil;
- 3) Place soil firmly in the planting pit around the root ball creating a shallow saucer of approximately 2 inches deep to hold water around the plant;
- 4) Install each plant with the crown of the root ball set at the same grade at which it was grown. Top of finish grade must be at trunk flare.
- 5) Water plants thoroughly upon installation. Backfill any settling of soil around root ball to re-establish initial grade and saucer.

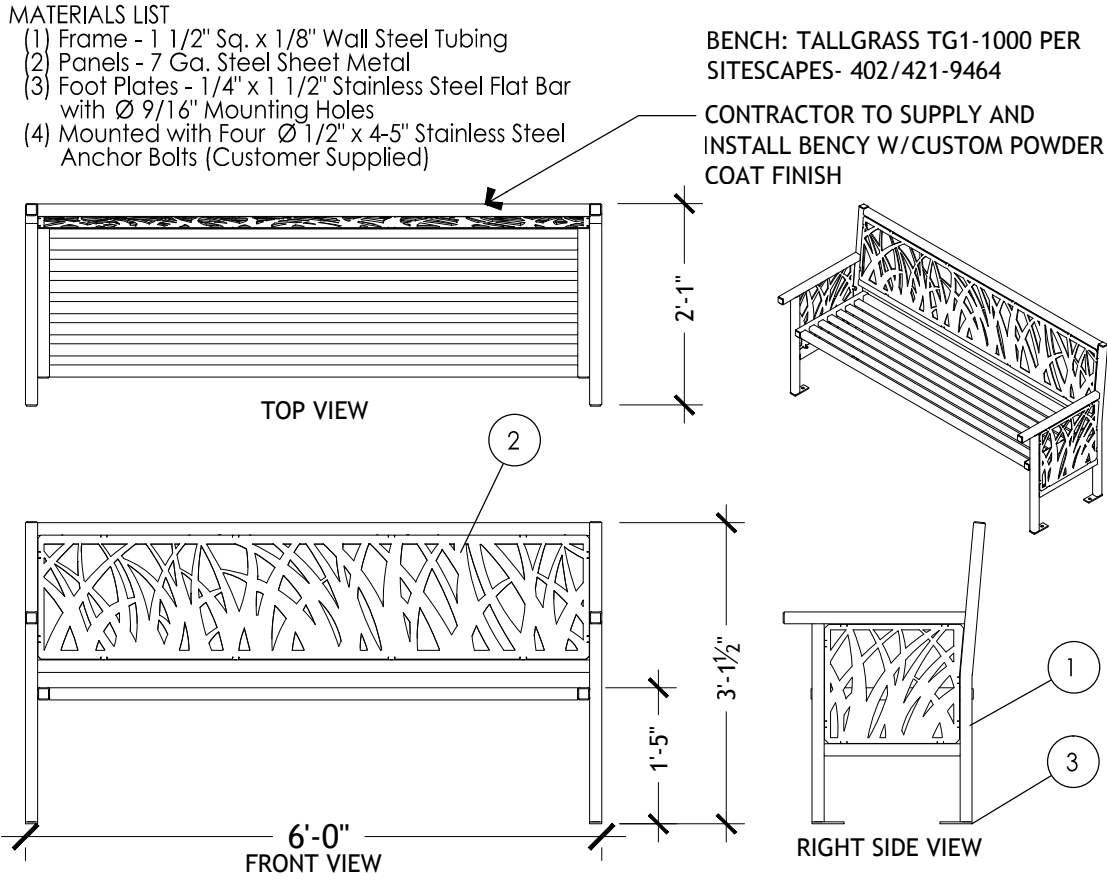
#### C. LAWN AREAS:

- 1) Install sod in all grass areas shown on plans. Sod must be placed in accordance with generally accepted installation practices including, but not limited to:
  - a) Place sod over minimum 6-inch topsoil layer;
  - b) Lay sod parallel to finished contours;
  - c) Stagger sod end seams so adjacent seams are not aligned;
  - d) Tightly abut all seams together;
  - e) Anchor sod with stakes or staples on slopes 3:1 or greater;
  - f) Roll all sod areas after installation; and
  - g) Commence watering installed sod until irrigation is operational.

- 2) Coordinate seasonal installation timing for maximum growth and appearance before store opening. Activate irrigation system upon completion of lawn areas.

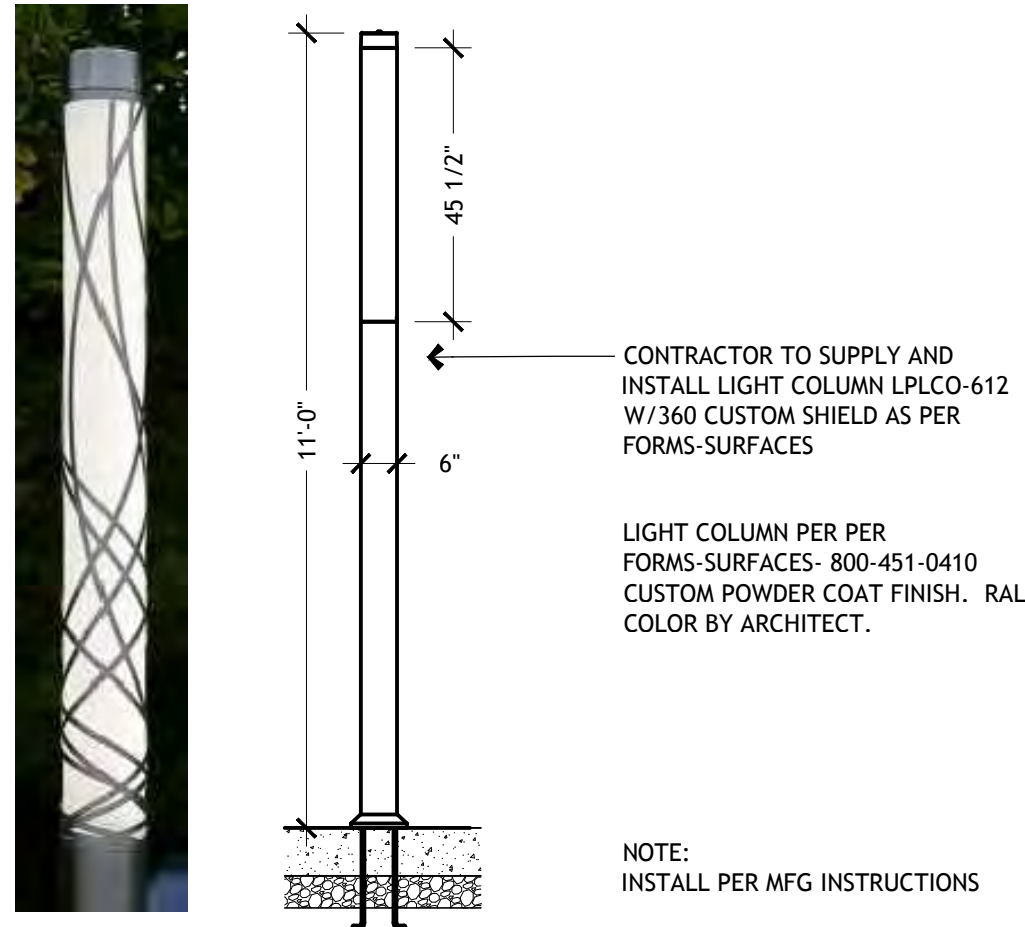
#### D. PLANT MATERIALS:

- 1) Plant material must comply with the latest edition of the American Standard for Nursery Stock, ANSI Z60.1.
  - a) SITE LANDSCAPING REQUIREMENTS:
    - (i) Field collected plants must not be used.
    - (ii) Thorn or fruit bearing trees or shrubs must not be used immediately adjacent to pedestrian areas including parking lot islands.
    - (iii) Double stake trees as shown on plans to ensure an initial plumb position. Contractor shall install plastic chain-lock tree ties, no wire ties shall be used. Wood staking must not contain chromated copper arsenate (CCA).
    - (iv) Do not wrap tree trunks.
  - b) PERIMETER LANDSCAPING:
    - (i) Install shade trees to define site and adhere to local screening and landscape requirements.
    - (ii) Ensure that sight lines to building signs and pylon signs are not hindered by landscape materials at mature growth. Maintain visibility of building and site signs from all street and drive intersections.
    - (iii) See planting plan for tree caliper.
    - (iv) Planting beds mulch must be clean, non-dyed, toxic free, bark fines, and free of disease and weed materials. Install to a uniform minimum 3-inch depth covering the root ball areas of all trees and shrubs. Pine straw, crushed rock, and pea gravel or similar materials are not acceptable as ground cover. Avoid placing mulch over utility boxes, sewer clean-outs, in-ground lights, etc.



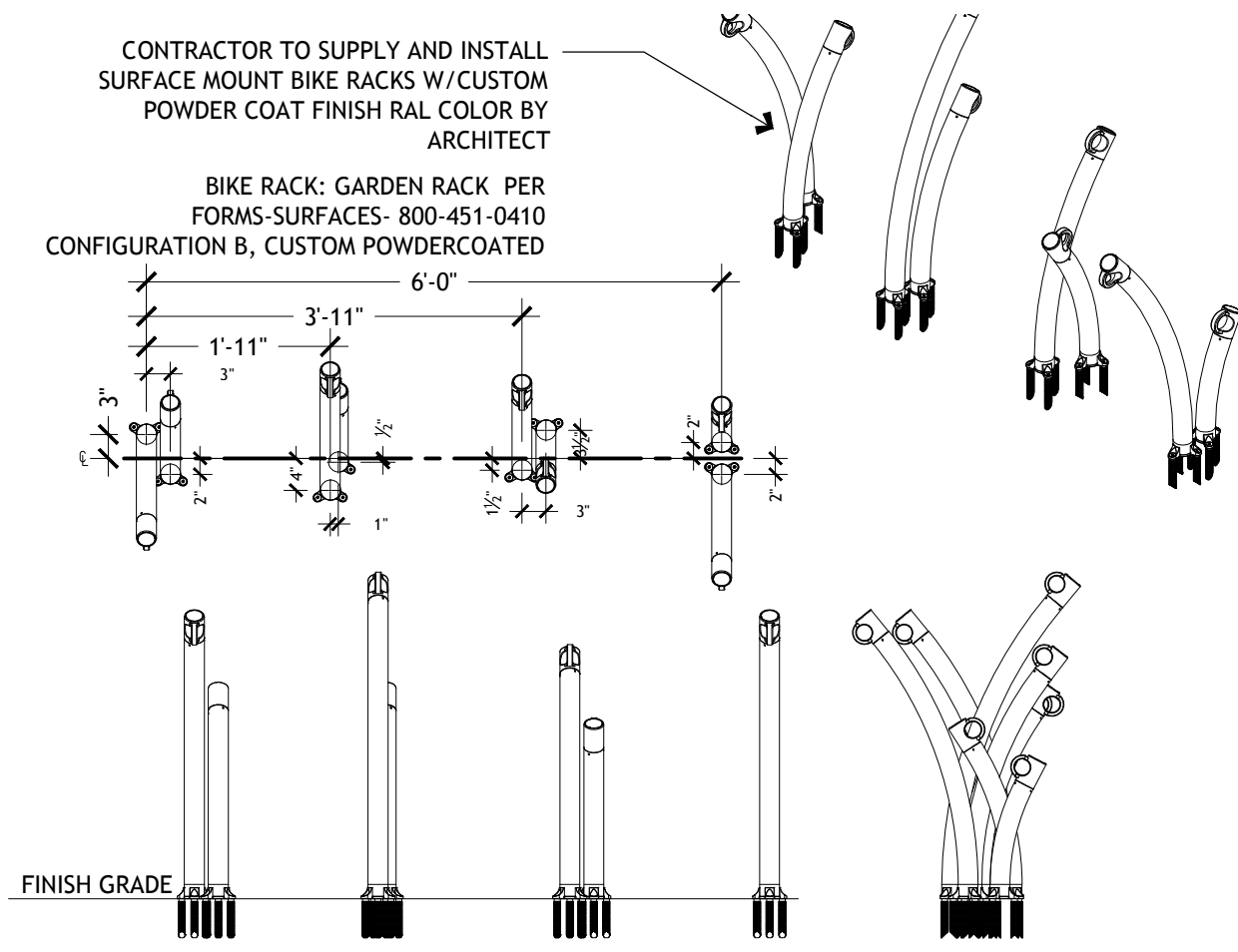
#### 1 BENCH

SCALE: 1/2" = 1'-0"



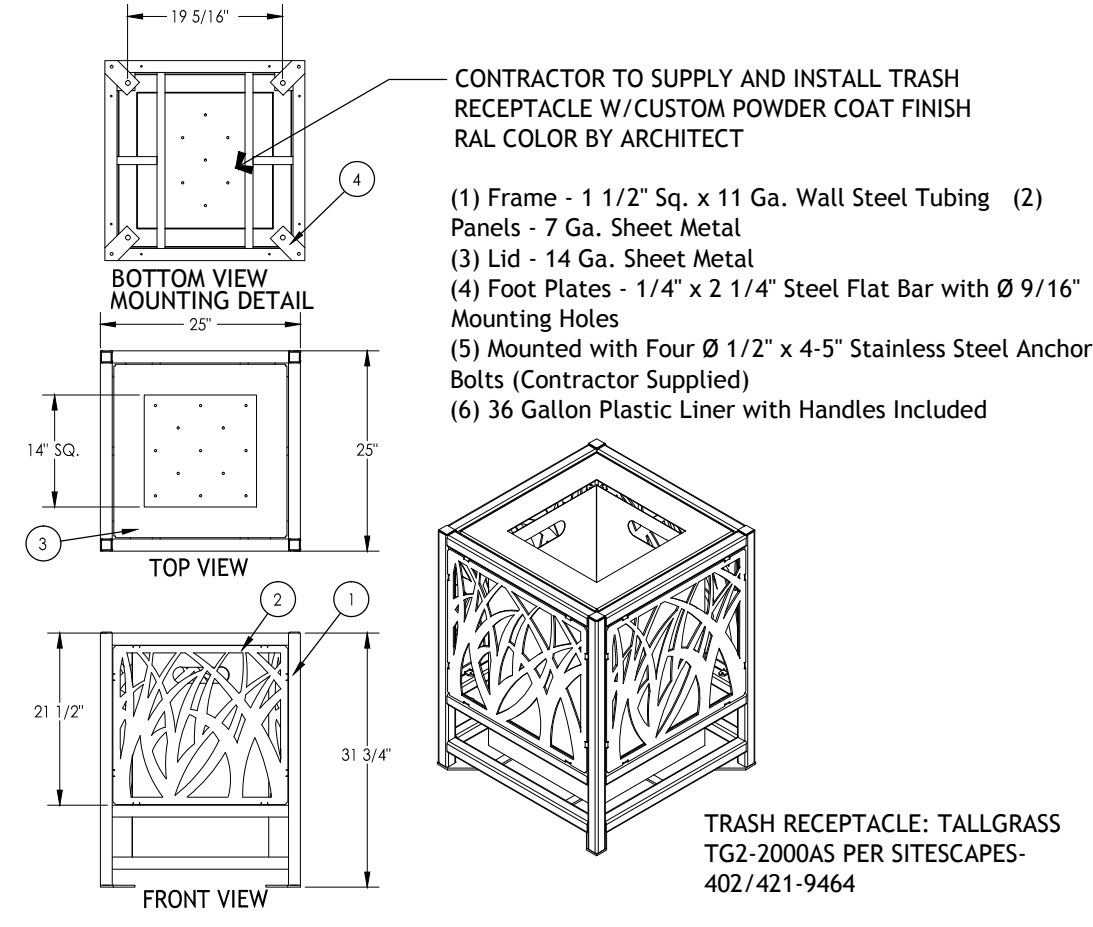
#### 2 LIGHT COLUMN

SCALE: 1/2" = 1'-0"



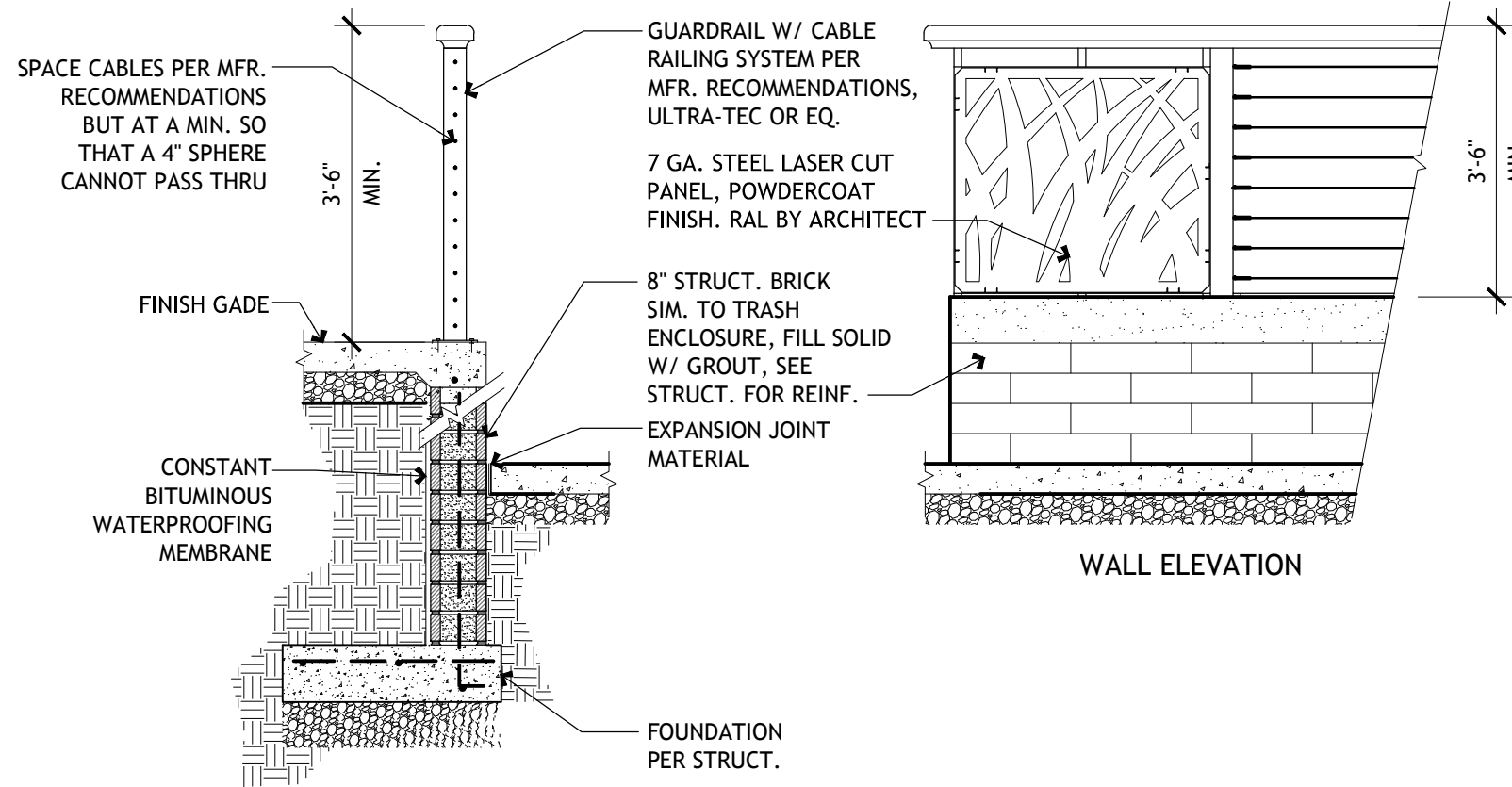
#### 3 BIKE RACK

SCALE: 1/2" = 1'-0"



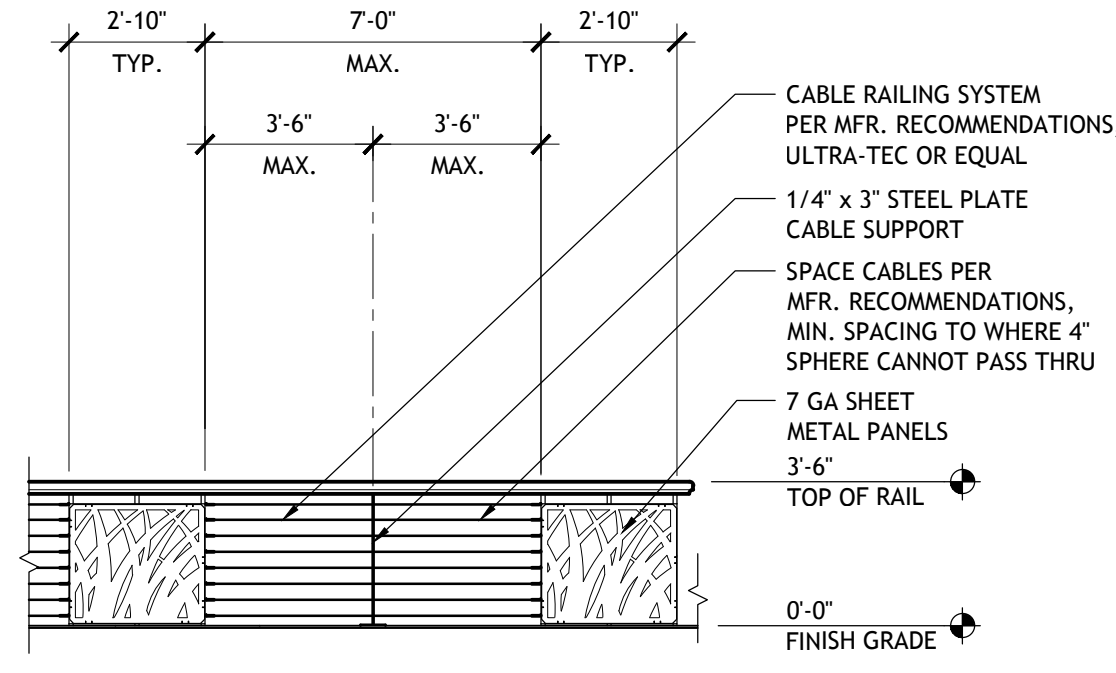
#### 4 TRASH RECEPTACLE

SCALE: 1/2" = 1'-0"



#### 5 RETAINING WALL/W GUARDRAIL

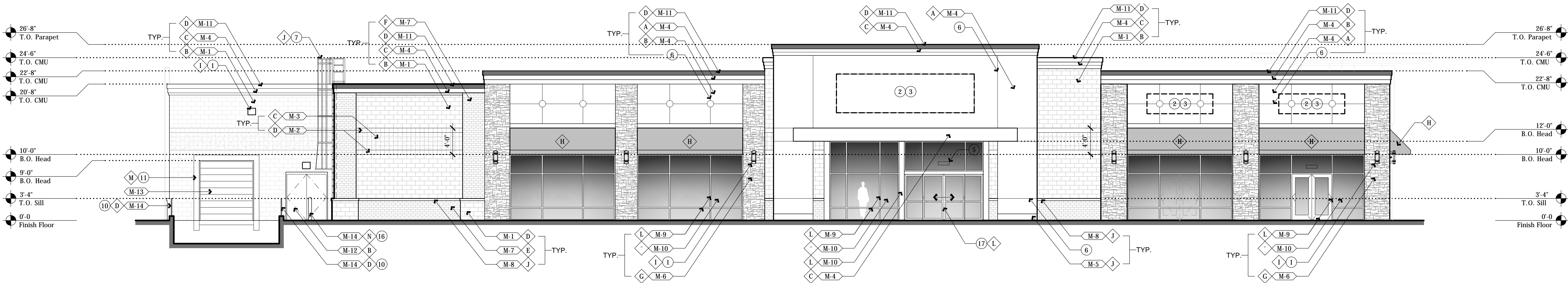
SCALE: 1/2" = 1'-0"



#### 6 GUARD RAILING

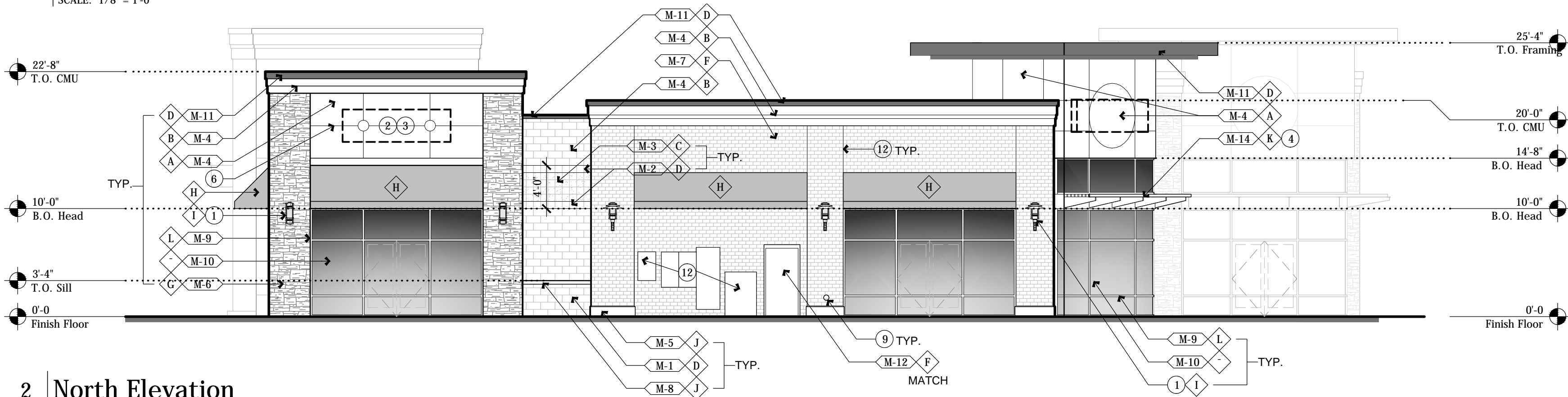
SCALE: 1/4" = 1'-0"





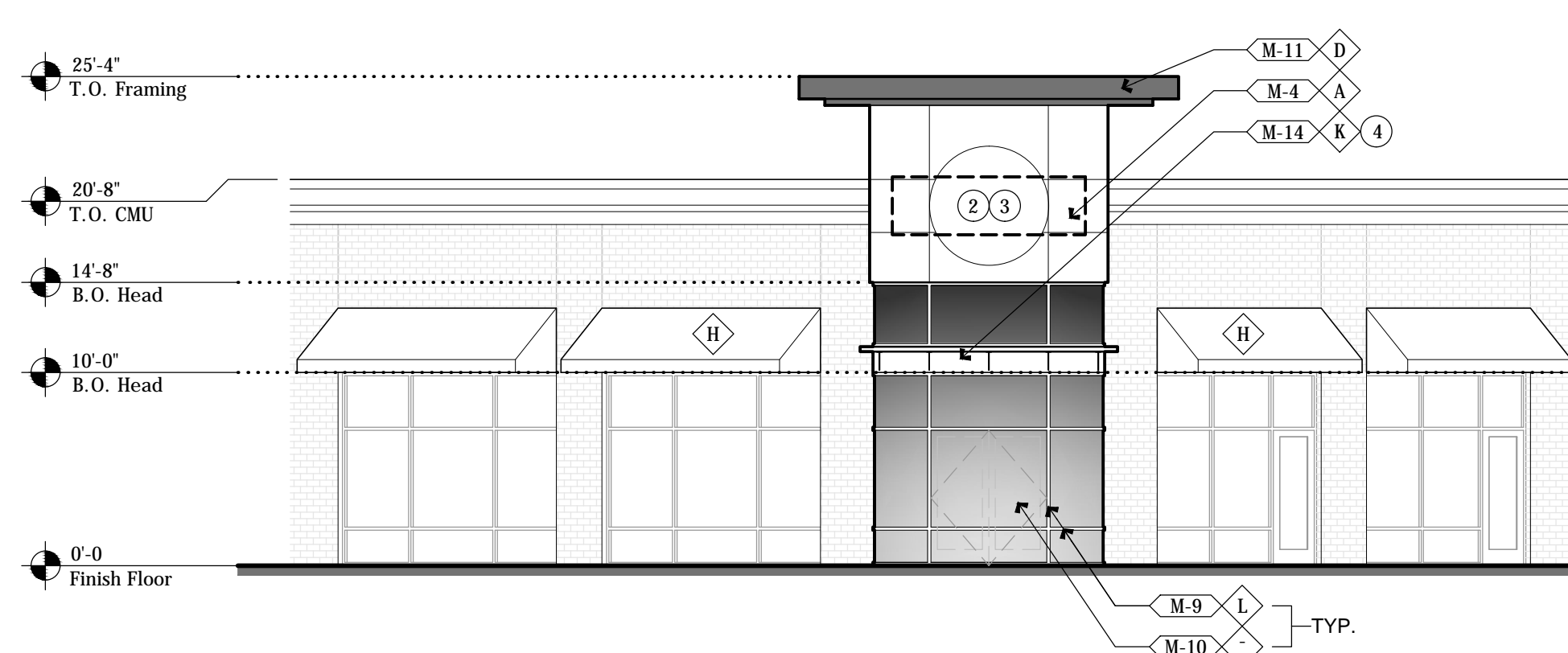
1 East Elevation

SCALE: 1/8" = 1'-0"



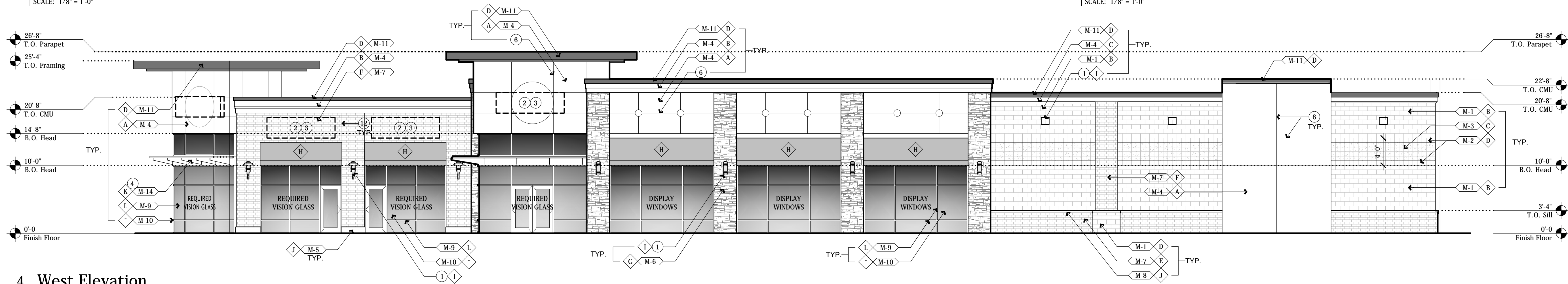
2 North Elevation

SCALE: 1/8" = 1'-0"



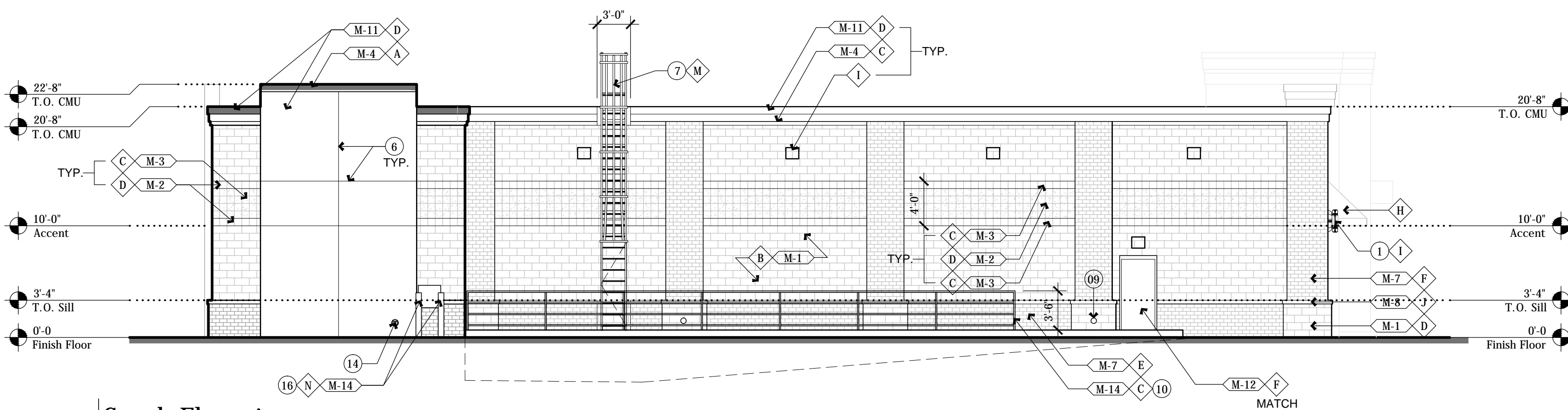
3 Northwest Elevation

SCALE: 1/8" = 1'-0"



4 West Elevation

SCALE: 1/8" = 1'-0"



5 South Elevation

SCALE: 1/8" = 1'-0"

Elevation Notes:

1. LIGHT FIXTURE, SEE ELECTRICAL
2. POSSIBLE TENANT SIGNAGE LOCATION. TENANT SIGNAGE N.I.C., UNDER SEPARATE PERMIT BY OTHERS. PROVIDE J-BOX BEHIND SIGNAGE SURFACE AND WIRING IN CONCEALED CONDUIT TYP. EACH LOCATION. SEE DETAIL \_\_\_/AX.X & \_\_\_/AX.X. SEE ELECTRICAL.
3. SIGN MOUNTING BRACKETS, SEE DETAIL \_\_\_/AX.X. CENTER ON STOREFRONT DOOR
4. STEEL CANOPY, SEE STRUCTURAL.
5. 6" WHITE VINYL ADDRESS LETTERING CENTERED ABOVE DOOR ON GLASS TRANSOM. COORDINATE W/ FIRE DEPARTMENT FOR LETTERING FONT, STROKE & COLOR
6. 3/4" E.I.F.S. "V" GROOVE
7. ROOF ACCESS LADDER, PER TENANT PROTOTYPES
8. ALIGN CONC. PLINTH, TYP.
9. ROOF OVERFLOW w/ CALVES TONGUE ESCUTCHEON
10. GUARDRAIL, PAINT
11. DOCK SEAL & BUMPER PER TENANT REQUIREMENTS
12. ELECTRICAL METER & EQUIPMENT, SEE ELECTRICAL
13. GAS METER & EQUIPMENT, SEE MECHANICAL
14. FIRE DEPT CONNECTION, SEE FIRE PLANS (BY CONTRACTOR)
15. OMIT E.I.F.S. PROFILE & WAINSCOT AT LADDER.
16. BOLLARD, PAINT
17. TENANT ENTRY SYSTEM, PER PROTOTYPE

Exterior Materials

- |      |   |
|------|---|
| M-1  | SMOOTH FACE CMU, PAINT                            |
| M-2  | SPLIT FACE SINGLE SCORE CMU, PAINT                |
| M-3  | SMOOTH FACE SINGLE SCORE CMU, PAINT               |
| M-4  | EXTERIOR INSULATION & FINISH SYSTEM               |
| M-5  | PRE-CAST CONC. PLINTH w/ 1" CHAMFER TOP & CORNERS |
| M-6  | ASHLAR STONE                                      |
| M-7  | BRICK   |
| M-8  | PRE-CAST SILL                                     |
| M-9  | THERMALLY BROKEN ALUMINUM FRAME GLAZING SYSTEM    |
| M-10 | GLAZING   |
| M-11 | PRE-FINISHED METAL COPING                         |
| M-12 | HOLLOW METAL DOOR & FRAME, PAINT                  |
| M-13 | PRE-FINISHED INSULATED OVERHEAD LIFT DOOR         |
| M-14 | FABRICATED STEEL                                  |

Exterior Colors & Finishes

- |    |   |
|----|---|
| A. | MATCH: BENJAMIN MOORE, #1038 'EVERLASTING'    |
| B. | MATCH: BENJAMIN MOORE, #1039 'STONE HOUSE'    |
| C. | MATCH: BENJAMIN MOORE, HC-46 'JACKSON TAN'    |
| D. | MATCH: BENJAMIN MOORE, #2164-20 'MARSH BROWN' |
| E. | MATCH: ENDICOTT BRICK COPPERTONE'             |
| F. | MATCH: ENDICOTT BRICK MEDIUM IRONSPOT 77      |
| G. | MATCH: OLDCASTLE, PRAIRIE STONE - BUFF        |
| H. | CLOTH AWNINGS: TBD                            |
| I. | BRONZE  |
| J. | NATURAL                                       |
| K. | GALVANIZED                                    |
| L. | CLEAR ANODIZED                                |
| M. | FACTORY FINISH                                |
| N. | 'TRAFFIC YELLOW'                              |

THIS SHEET REVISED IN ITS ENTIRETY