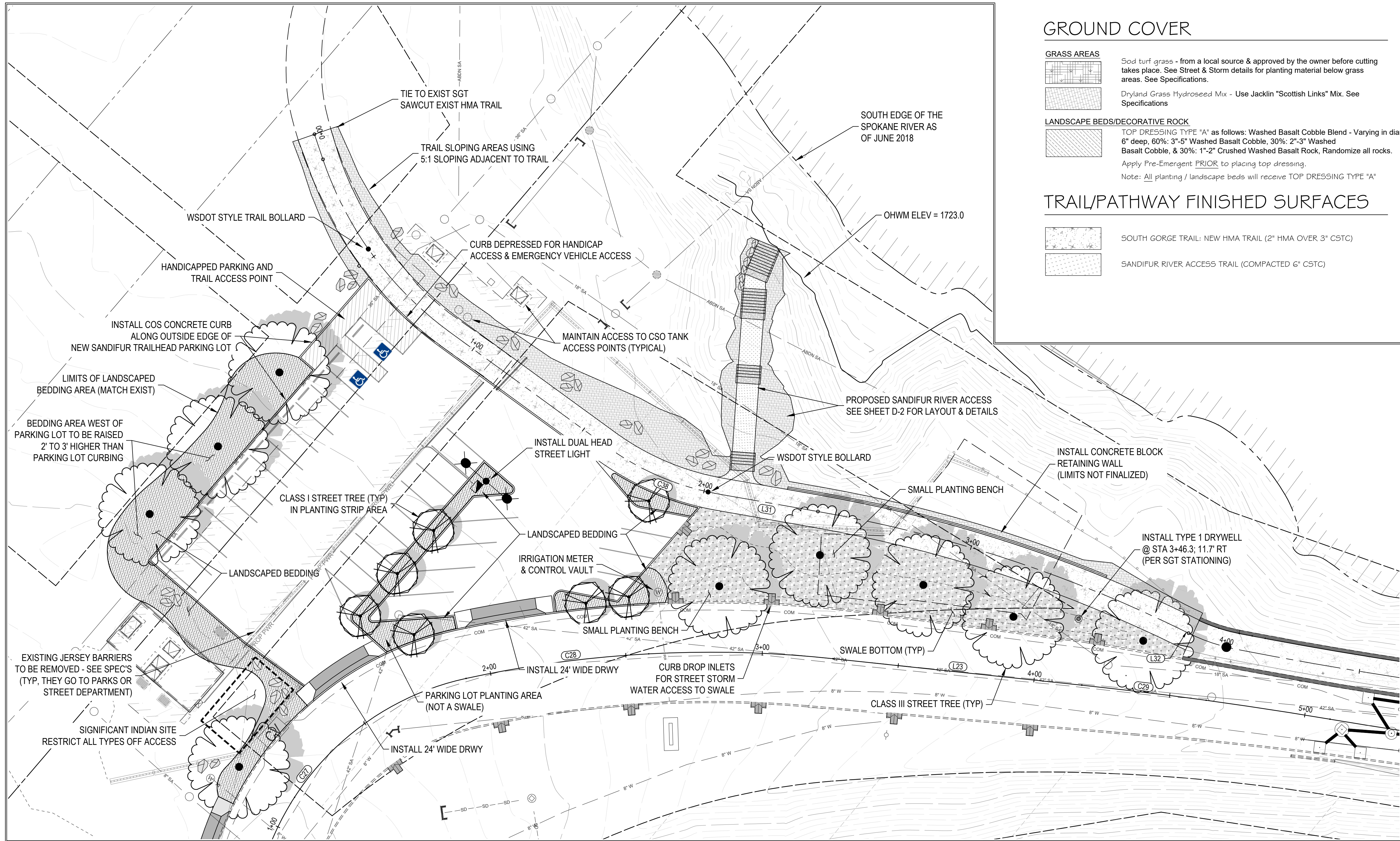


P:\Team\PROJECTS-Team 2019-138 - South Gorge Trail Ph2\03_CAD WORLD\05_PRODUCTION DRAWINGS - DESIGN\2019138_MA_Road_v2.dwg PLOT DATE: Nov 19, 2019 - 9:53AM



GROUND COVER

GRASS AREAS
 Sod turf grass - from a local source & approved by the owner before cutting takes place. See Street & Storm details for planting material below grass areas. See Specifications.
 Dryland Grass Hydroseed Mix - Use Jacklin "Scottish Links" Mix. See Specifications.

LANDSCAPE BEDS/DECORATIVE ROCK
 TOP DRESSING TYPE "A" as follows: Washed Basalt Cobble Blend - Varying in diameter, 6" deep, 60%: 3"-5" Washed Basalt Cobble, 30%: 2"-3" Washed Basalt Cobble, & 30%: 1"-2" Crushed Washed Basalt Rock, Randomize all rocks.
 Apply Pre-Emergent PRIOR to placing top dressing.
 Note: All planting / landscape beds will receive TOP DRESSING TYPE "A"

TRAIL/PATHWAY FINISHED SURFACES

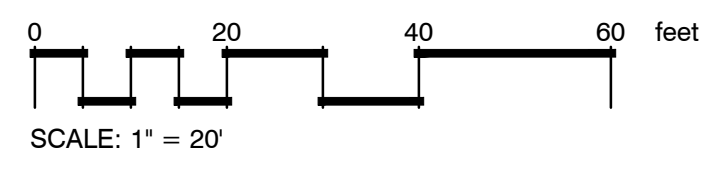
SOUTH GORGE TRAIL: NEW HMA TRAIL (2" HMA OVER 3" C5TC)
 SANDIFUR RIVER ACCESS TRAIL (COMPACTED 6" C5TC)

SOUTH GORGE TRAIL & SANDIFUR BRIDGE TRAILHEAD PLANTING PLAN

SCALE: 1" = 20'

PLANT SCHEDULE

TREES	CODE	BOTANICAL NAME / COMMON NAME	CONT.	CAL	DETAIL	SHRUBS	CODE	BOTANICAL NAME / COMMON NAME	SIZE	SPACING	DETAIL	BOULDERS	DESCRIPTION	SIZE
	AGA	Amelanchier grandiflora 'Autumn Brilliance' / Autumn Brilliance Serviceberry	You Pick	2" Cal.	Sht. L14, #1		ASB	Gaillardia x grandiflora 'Arizona Sun' / Arizona Sun Blanket Flower	4" Pot	12" O.C.	Sht. L14, #2		Group (3) Basalt Boulders	Three Man & Four Man Rocks
							CTD	Coloneaster dammeri 'Coral Beauty' / Bearberry Coloneaster	5 Gal.	60" O.C.	Sht. L14, #2		Single (1) Basalt Boulder	Five Man Rocks
							DLL	Hemerocallis 'Pardon Me' / Pardon Me Daylily	4" Pot	12" O.C.	Sht. L14, #2			
							EAC	Euonymus alatus 'Compactus' / Dwarf Winged Euonymus	5 Gal.	72" O.C.	Sht. L14, #2			
							FRG	Calamagrostis x acutiflora 'Karl Foerster' / Feathered Reed Grass	5 Gal.	48" O.C.	Sht. L14, #2			
							PAH	Pennisetum alopecuroides 'Hameln' / Hameln Dwarf Fountain Grass	1 Gal.	18" O.C.	Sht. L14, #2			
	QIS	Quercus imbricaria / Shingle Oak	You Pick	2" Cal.	Sht. L14, #1									



**PRELIMINARY ONLY
NOT FOR CONSTRUCTION**

**CONSTRUCTION DRAWING
NOT AS-BUILT**

DATE: _____

PROJECT NAME: SOUTH GORGE TRAIL PH. 2 & CSO 22B BASIN

SEGMENT LIMITS: SANDIFUR TRAILHEAD PARKING LOT
RIVERSIDE AVE. & CLARKE ST.

PROJECT LIMITS: SPRUCE to CEDAR/WILSON to WATER

TYPE OF IMPROVEMENT: DETAIL

PROJECT NO.: 2019138/2018111

PLAN NO.: CLARK V (1) 3
24-25-42

L-1
1 of ??

REVISIONS		NAVD88 = (OLD CBM ELEV.) - (13.13)	AS OF JANUARY, 2000 USE NORTH AMERICAN VERTICAL DATUM OF 1988 (NAVD88)	BENCH MARK LOCATION: NWLY COR. RIVERSIDE AVE. & "A" ST. 61.8' NE OF MARNE BRIDGE; 36.3' NW OF CL OF RIVERSIDE NOTE: BOOK ELEV. OF 1755.41. PROJECT ELEV = 1755.34		CURRENT C.O.S. DESIGN STANDARDS ADOPTED FEB, 2007	CITY OF SPOKANE	CITY OF SPOKANE, WASHINGTON DEPARTMENT OF ENGINEERING SERVICES 808 WEST SPOKANE FALLS BLVD. SPOKANE, WASHINGTON 99201-3343 (509) 625-6700
DATE	BY	PROJECT	DESCRIPTION	SCALE	HORIZONTAL SCALE (22 x 34) PLAN & PROFILE 1"= 20' VERTICAL SCALE (22 x 34) 1"= 10'	DRAWN: RJS 06/2019 APPROVED: RKP		