

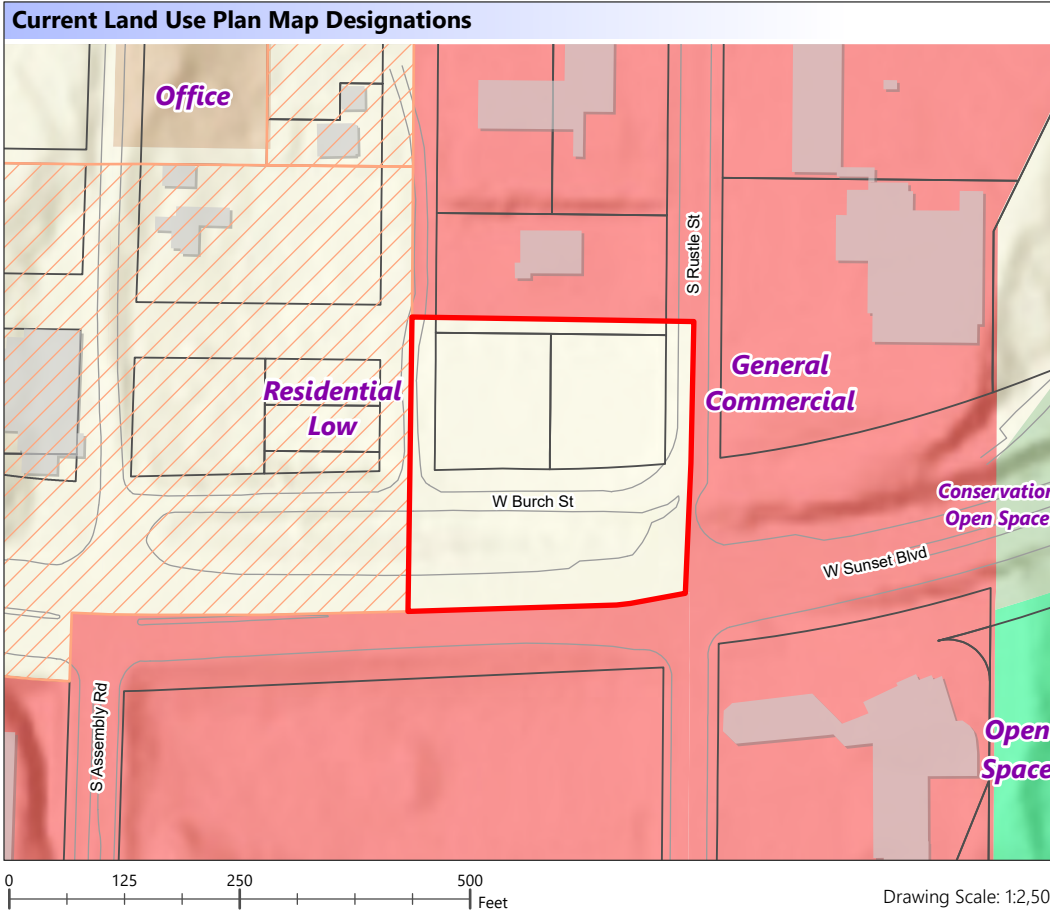


Exhibit B: Land Use Plan Map Changes

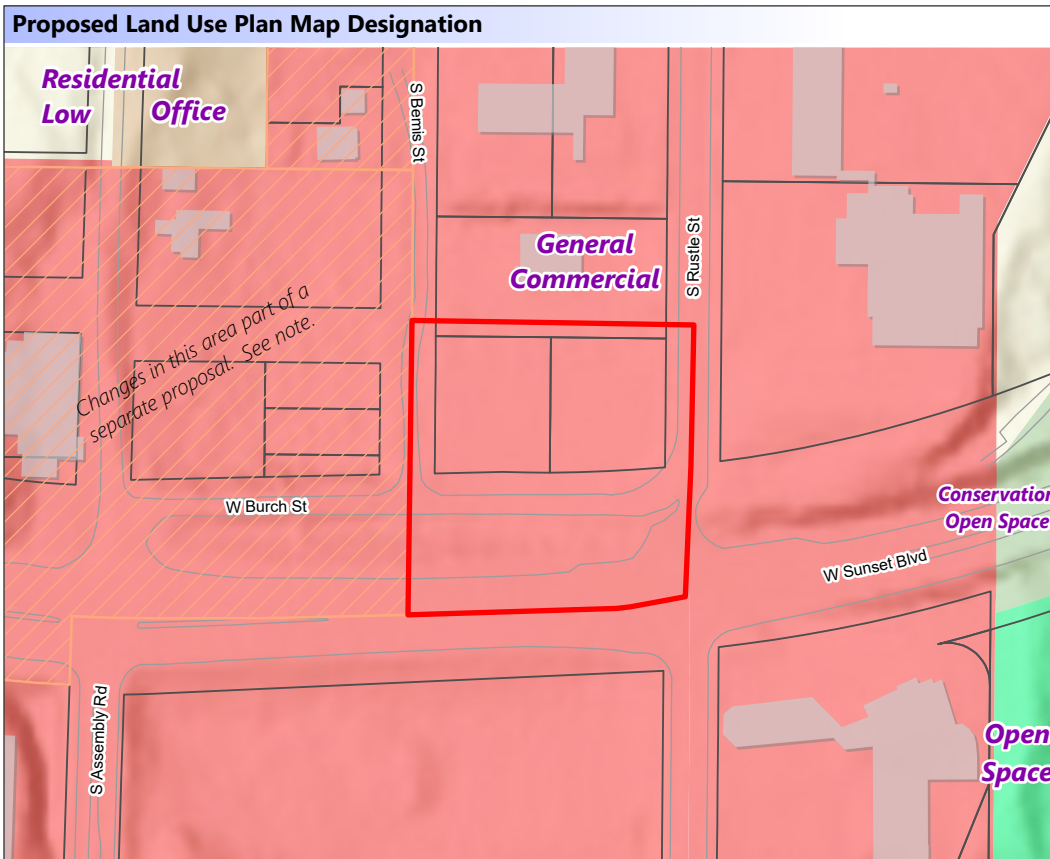
Department of Planning & Economic Development



THIS IS NOT A LEGAL DOCUMENT
The information shown on this map is compiled from various sources and is subject to constant revision. Information shown on this map should not be used to determine the location of facilities in relationship to property lines, section lines, streets, etc.



- Z23-477COMP
 - Other Application
 - Parcel
 - Buildings
 - Curb Line
- Land Use Plan Designation**
- Conservation Open Space
 - Open Space
 - Residential Low
 - Office
 - General Commercial



Agent: Storhaug Engineering
Parcels: 25262.0108
 25262.0505
Size: 0.84 acres
 (Size is Approximate)

Note: This application is located adjacent to another proposal by a another applicant. See **File Z23-478COMP** for details as to the adjacent application.

