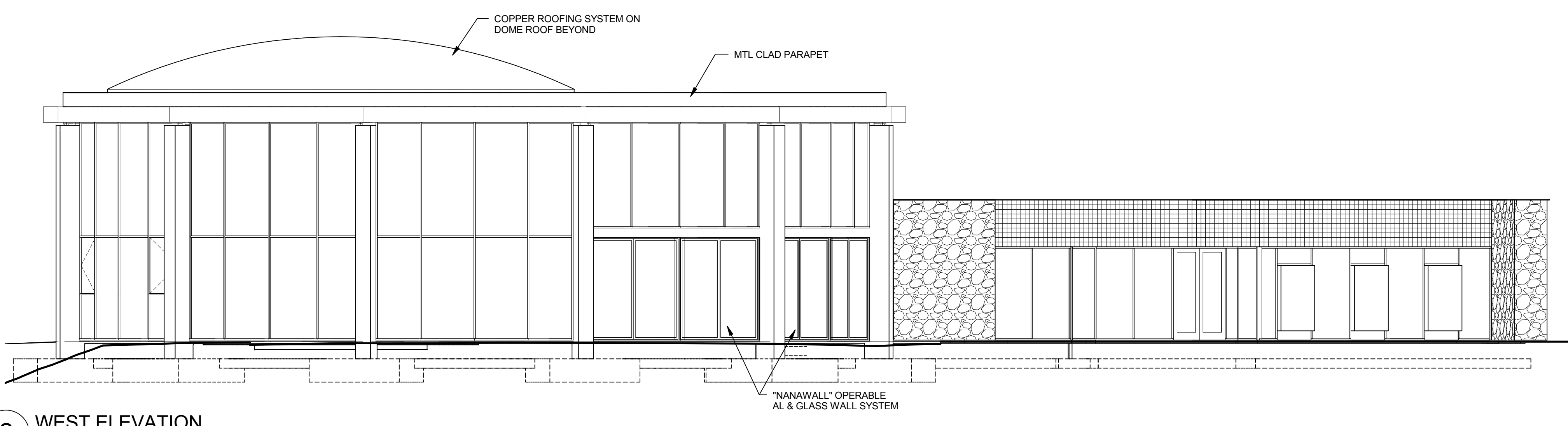
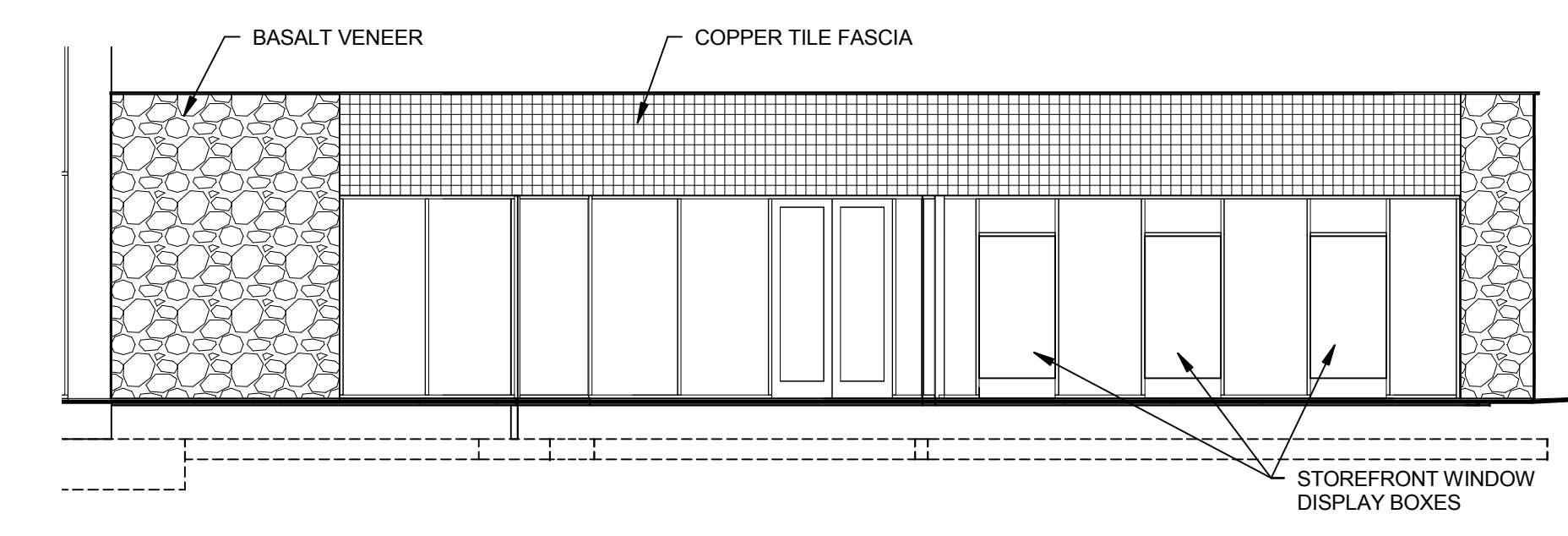


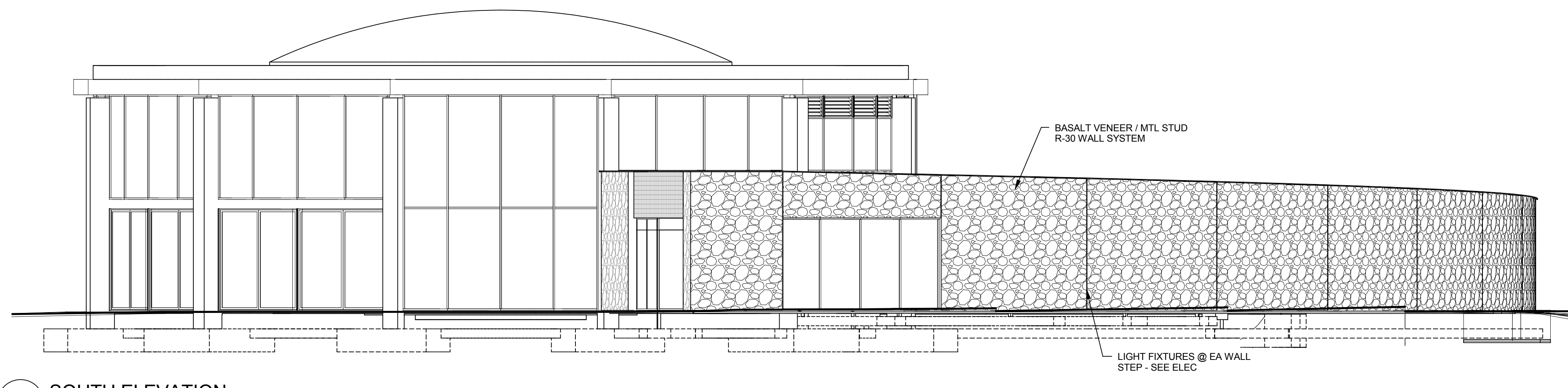
1 NORTH ELEVATION
Scale: 1/8" = 1'-0"



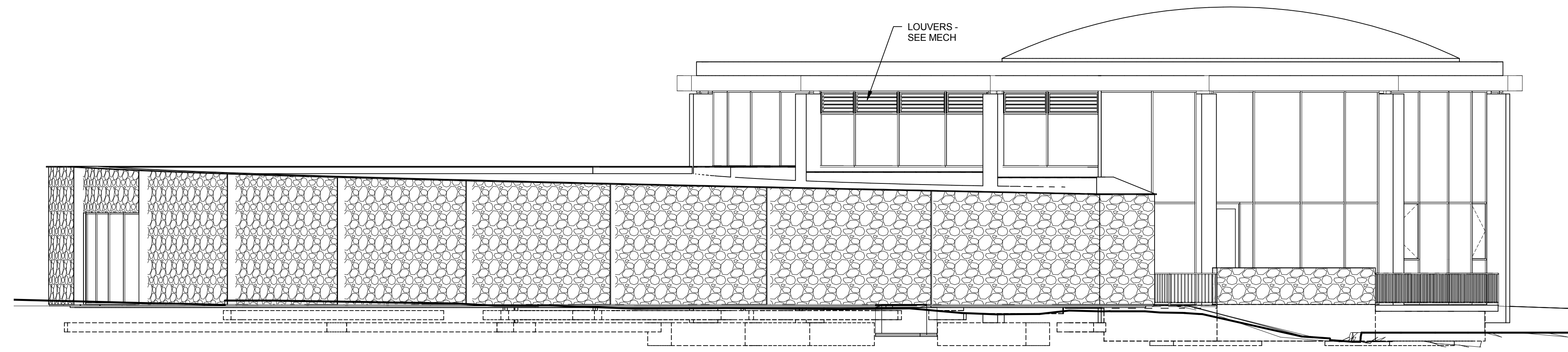
2 WEST ELEVATION
Scale: 1/8" = 1'-0"



5 SOUTHWEST ELEVATION
Scale: 1/8" = 1'-0"



3 SOUTH ELEVATION
Scale: 1/8" = 1'-0"



4 EAST ELEVATION
Scale: 1/8" = 1'-0"