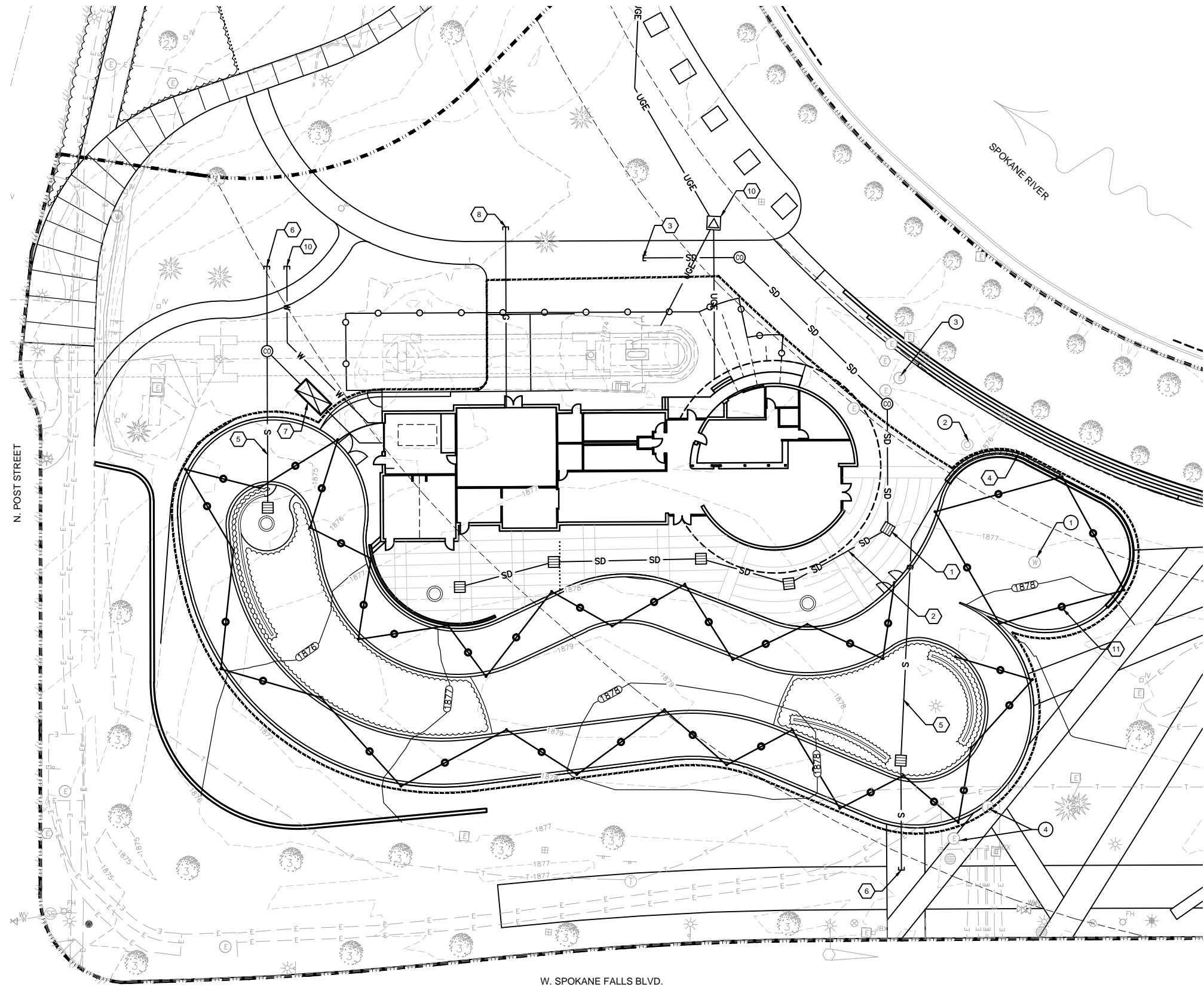


GENERAL NOTES:

- EXISTING UTILITIES SHALL BE CONFIRMED WITH AVISTA UTILITIES AT TIME OF BUILDING CONNECTION.
- REFER TO EXHIBIT B FOR UTILITY CONNECTIONS OUTSIDE OF SITE LIMITS.
- ICE RIBBON IS A CONTAINED SYSTEM THAT WILL BE DIRECTED TO CITY STORM SEWER.
- ICE MELT CHAMBER WILL BE DIRECTED TO CITY STORM SEWER.
- BUILDING AND SITE PAVING WILL BE COLLECTED ONSITE AND DIRECTED SWALES NOTED ON EXHIBIT B.
- EXISTING ONSITE DRYWELL (KEYNOTE 2) RECEIVES FLOW FROM AREAS THAT WILL BE REPLACED BY THE ICE RIBBON. FLOW OUTSIDE THE RIBBON WILL BE DIRECTED TOWARD SWALES NOTED ON EXHIBIT B.



LEGEND

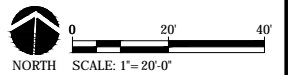
- LIMIT OF WORK
- SHORELINE SETBACK
- BUILDING AND ICE RIBBON LIMIT OF WORK
- ☐ CATCH BASIN
- ⊙ CLEANOUT
- ⊠ TRANSFORMER
- UGE — ELECTRICAL
- G — GAS LINE
- SD — STORM DRAIN
- S — STORM SEWER
- W — WATER LINE
- FENCE

KEYNOTES

- STORM CB (TYP)
- 8" STORM PIPE (TYP)
- TO SITE SWALE
- TRENCH DRAIN
- 8" STORM SEWER
- CONNECT TO CITY SEWER
- GREASE TRAP
- GAS CONNECTION
- 2" WATER SERVICE
- TRANSFORMER (480/277)
- RIBBON LIGHTING (TYP)

EXISTING UTILITIES KEYNOTES

- RELOCATE IRRIGATION
- ABANDON DRYWELL
- REMOVE ELECTRICAL
- PROTECT ELECTRICAL VAULT IN PLACE



DIGITALLY SIGNED:	
TYPE OF IMPROVEMENT:	PARK
CITY PURCHASING NUMBER	DRAWING NUMBER
	EXHIBIT B.1
FILE NAME:	REVISION NO.:

BY	REVISIONS	DATE



LOCATION: BRASS CAP #CP9 N50002.85 E20081.44 (WGS 84) NOTE: FOR CONVERSION TO HISTORICAL CITY DATUM ADD 13.13'	CURRENT DESIGN STANDARDS: CCS - ADOPTED 2/95
ELEVATION: 1734.64 @ CAP #CP9	HORIZONTAL: BAR IS ONE INCH ON ORIGINAL DRAWING.
CRM NO.: 43N 44W	VERTICAL: IF NOT ONE INCH ON THIS SHEET, ADJUST SCALES ACCORDINGLY
NAVIG 88	
CITY DATUM	SCALE

CITY OF SPOKANE, WASHINGTON
 DEPARTMENT OF ENGINEERING SERVICES
 808 WEST SPOKANE FALLS BLVD.
 SPOKANE, WASHINGTON 99201-3343
 (509) 625-6300

PROJECT TITLE:	RIVERFRONT PARK SOUTH BANK WEST RECREATIONAL RINK & SKYRIDE
SHEET TITLE:	STORMWATER & UTILITIES PLAN (ICE RIBBON AND BUILDING SITE LIMITS)
DATE:	Mar 01, 2016 - 5:38pm by: zsargent