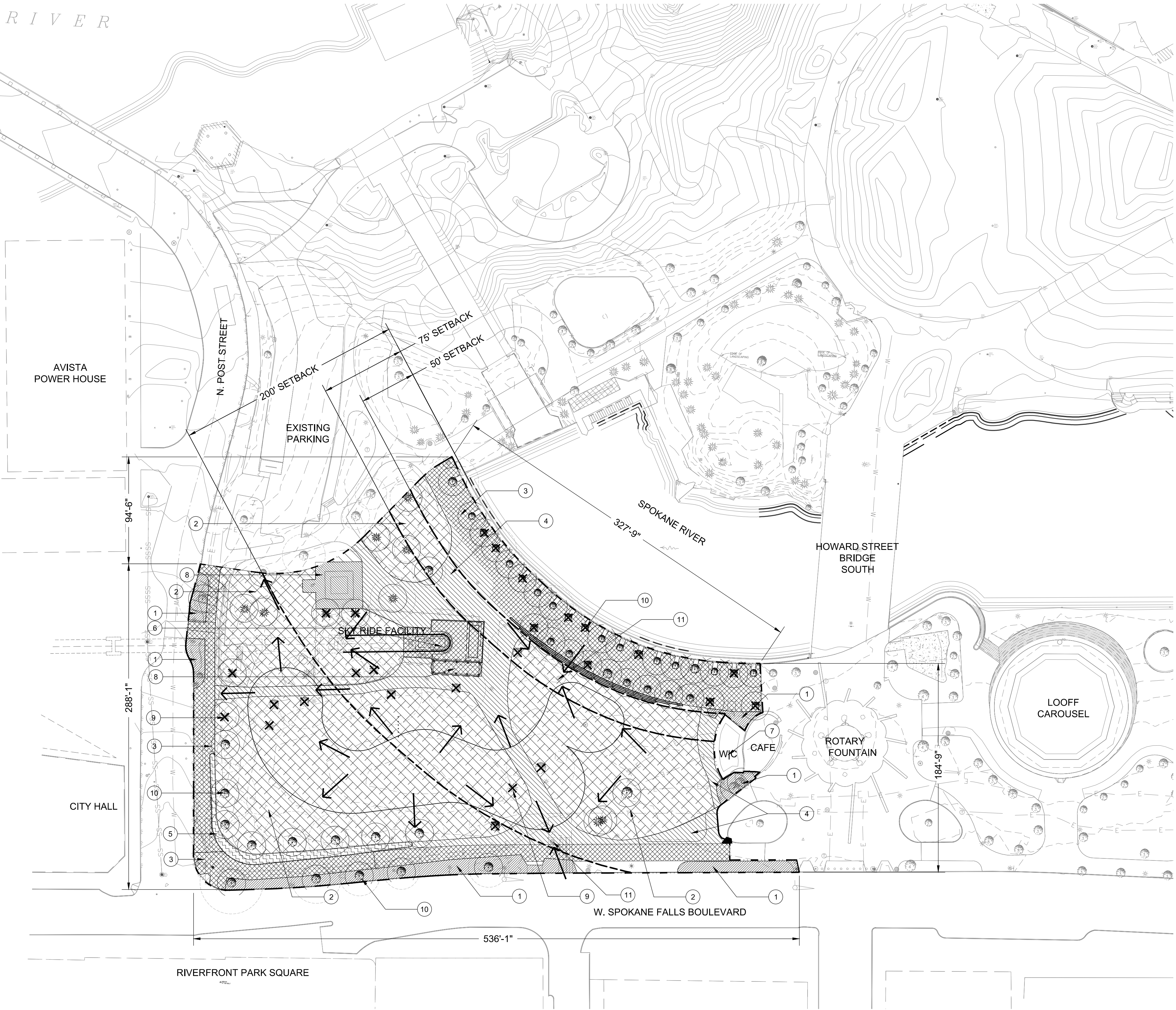


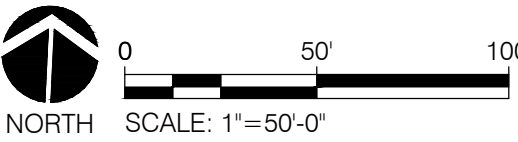
GENERAL EXISTING CONDITIONS & REMOVAL NOTES:

- 1. TOTAL AREA WITHIN SITE BOUNDARY: 125,864 SQUARE FEET
- 2. TOTAL HARDSCAPE TO REMAIN: 26,197 SQUARE FEET
- 3. TOTAL HARDSCAPE TO REMOVE: 19,214 SQUARE FEET
- 4. TOTAL LANDSCAPE TO REMAIN: 6490 SQUARE FEET
- 5. TOTAL LANDSCAPE TO REMOVE: 73,963 SQUARE FEET



- LEGEND
- — — LIMIT OF WORK
 - — — PROPERTY LINE (NOW SHOWN ON ADAMS & CLARK SURVEY)
 - — — SHORELINE SETBACK
 - EX. TREE TO REMAIN
 - ✱ EX. TREE TO BE REMOVED
 - ← EXISTING SURFACE WATER FLOW

- EXISTING CONDITIONS KEYNOTES
- 1. LANDSCAPE AREA TO REMAIN
 - 2. LANDSCAPE AREA TO REMOVE
 - 3. HARDSCAPE TO REMAIN
 - 4. HARDSCAPE TO REMOVE
 - 5. SCULPTURE | ART TO REMAIN
 - 6. SKYRIDE/GONDOLA STRUCTURE TO REMAIN
 - 7. BUILDING TO REMAIN
 - 8. BUILDING TO BE DEMOLISHED
 - 9. TREE TO REMOVE
 - 10. TREE TO REMAIN
 - 11. EXISTING STORM STRUCTURE (DRY WELL)



BY	REVISIONS	DATE



LOCATION: BRASS CAP #CP9 N50002.85 E20081.44 (WGS 84) NOTE: FOR CONVERSION TO HISTORICAL CITY DATUM ADD 13.13'	
ELEVATION: 1734.64' @ CAP #CP9	HORIZONTAL
CBM NO. 43N 44W NAVD 88	VERTICAL
CITY DATUM	SCALE

CURRENT DESIGN STANDARDS
CCS - ADOPTED 2/95

DRAWN
DESIGNED
CHECKED
APPROVED



CITY OF SPOKANE, WASHINGTON
DEPARTMENT OF PARKS AND RECREATION
808 WEST SPOKANE FALLS BLVD.
SPOKANE, WASHINGTON 99201-3343
(509) 625-6200

PROJECT TITLE:	RIVERFRONT PARK SOUTH BANK WEST RECREATIONAL RINK & SKYRIDE
SHEET TITLE:	CUP SUBMITTAL EXISTING CONDITIONS & DEMOLITION

DATE: Feb 26, 2016 - 6:38pm by: toddb

DIGITALLY SIGNED:	
TYPE OF IMPROVEMENT:	PARK
CITY PURCHASING NUMBER	DRAWING NUMBER
FILE NAME:	EXHIBIT A
REVISION NO.:	