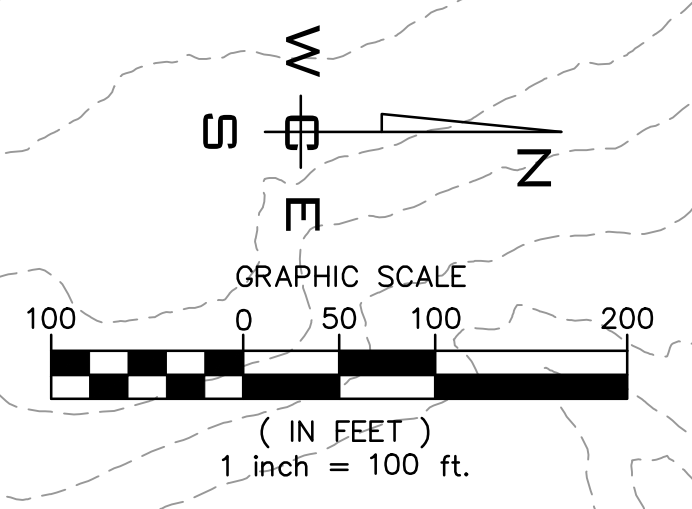
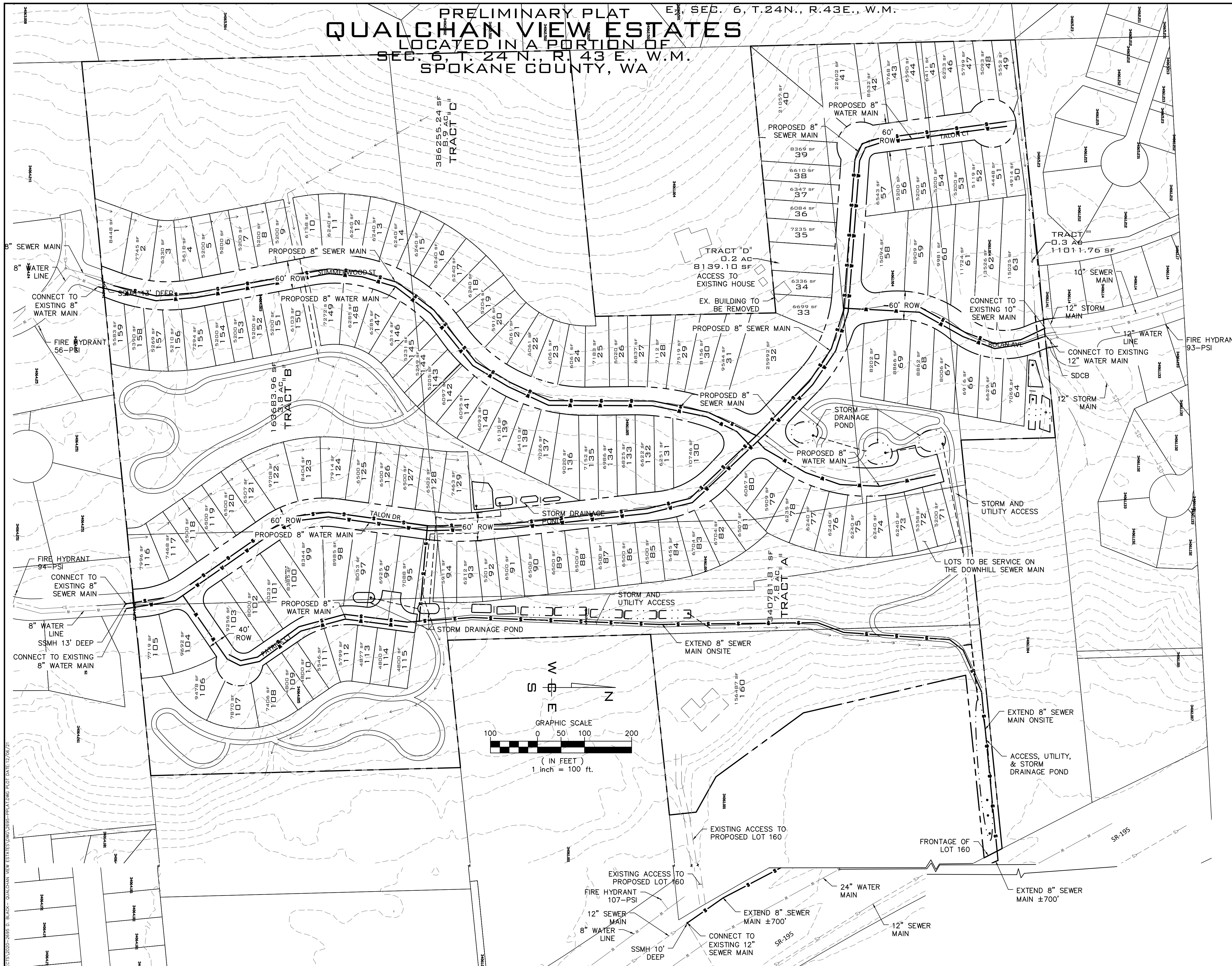
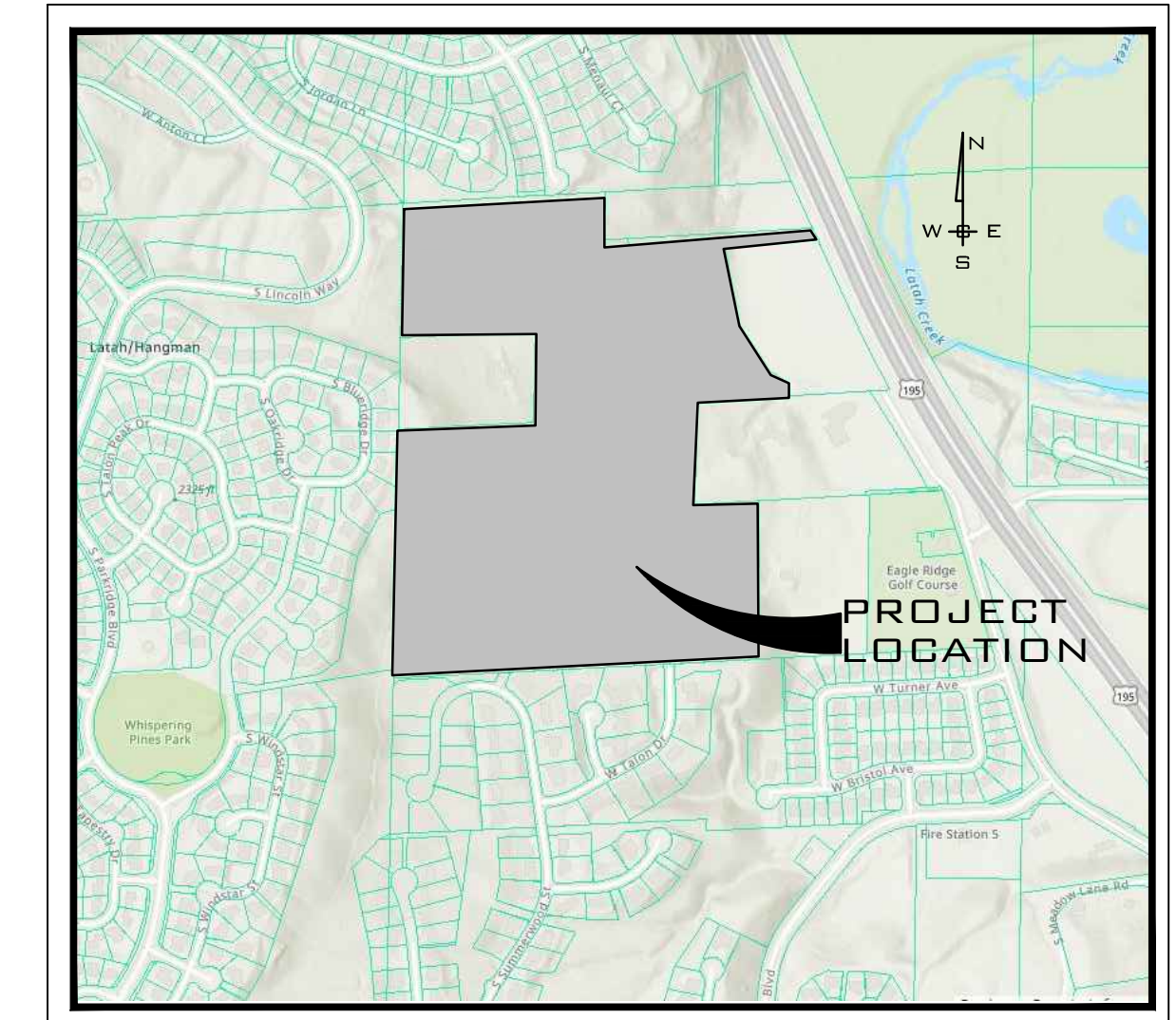


PRELIMINARY PLAT SEC. 6, T.24N., R.43E., W.M.
QUALCHAN VIEW ESTATES
 LOCATED IN A PORTION OF
 SEC. 6, T. 24 N., R. 43 E., W.M.
 SPOKANE COUNTY, WA

UNDERGROUND SERVICE ALERT
ONE-CALL NUMBER
811
 CALL TWO BUSINESS DAYS BEFORE YOU DIG

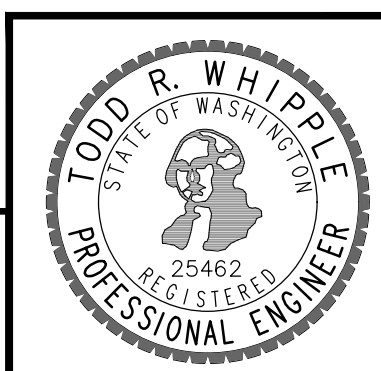


SURVEYOR
 WHIPPLE CONSULTING ENGINEERS
 21 SOUTH PINES ROAD
 SPOKANE VALLEY, WA 99206
 PHONE: 893-2617
 CONTACT: DAVID COWELL, P.L.S.

ENGINEERING
 WHIPPLE CONSULTING ENGINEERS
 21 SOUTH PINES ROAD
 SPOKANE VALLEY, WA 99206
 PHONE: 893-2617
 CONTACT: TODD WHIPPLE, P.E.

OWNER
 BLACK REALTY INC
 801 W RIVERSIDE AVE STE 300
 SPOKANE, WA. 99201

PLANS NOT APPROVED BY AGENCY



COUNTY DATUM
 XXX

NO.	DATE	BY	REVISIONS

SCALE:	PROJ #: 20-2695
HORIZONTAL:	DATE: 11/18/21
VERTICAL:	DRAWN: JPP
N/A	REVIEWED: TRW

WCE
 WHIPPLE CONSULTING ENGINEERS
 21 S. PINES ROAD
 SPOKANE VALLEY, WA 99206
 PH: 509-893-2617 FAX: 509-926-0227

QUALCHAN VIEW ESTATES
PRELIMINARY UTILITY PLAN
5708 S. MEADOW LANE
SPOKANE, WA

SHEET 1 OF 1
 JOB NUMBER
20-2695