

# ACCESS TO RIVERFRONT & CITY HALL

## POST STREET BRIDGE & RIVERFRONT CONSTRUCTION



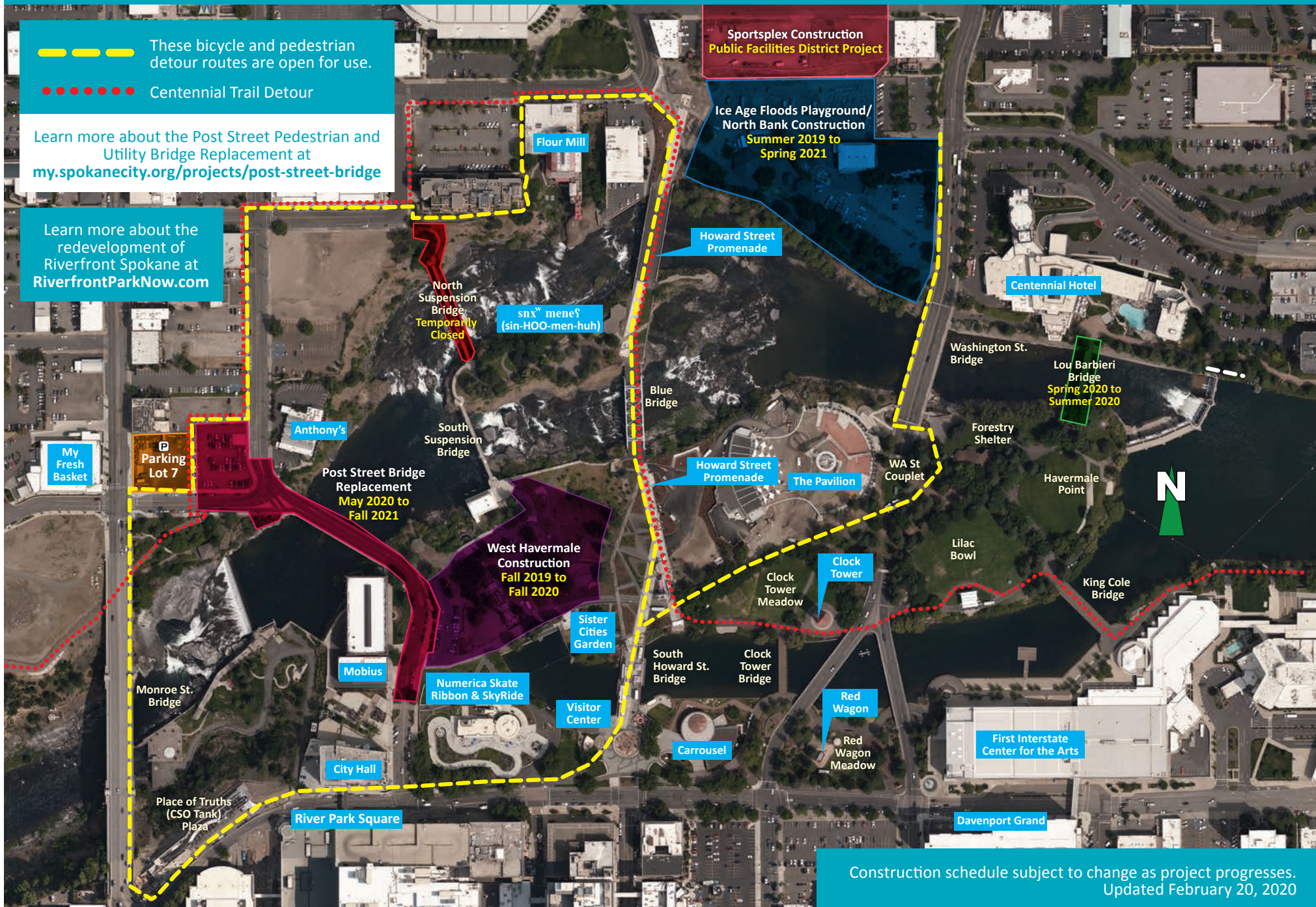
These bicycle and pedestrian  
detour routes are open for use.



Centennial Trail Detour

Learn more about the Post Street Pedestrian and  
Utility Bridge Replacement at  
[my.spokanecity.org/projects/post-street-bridge](http://my.spokanecity.org/projects/post-street-bridge)

Learn more about the  
redevelopment of  
Riverfront Spokane at  
[RiverfrontParkNow.com](http://RiverfrontParkNow.com)



Construction schedule subject to change as project progresses.  
Updated February 20, 2020