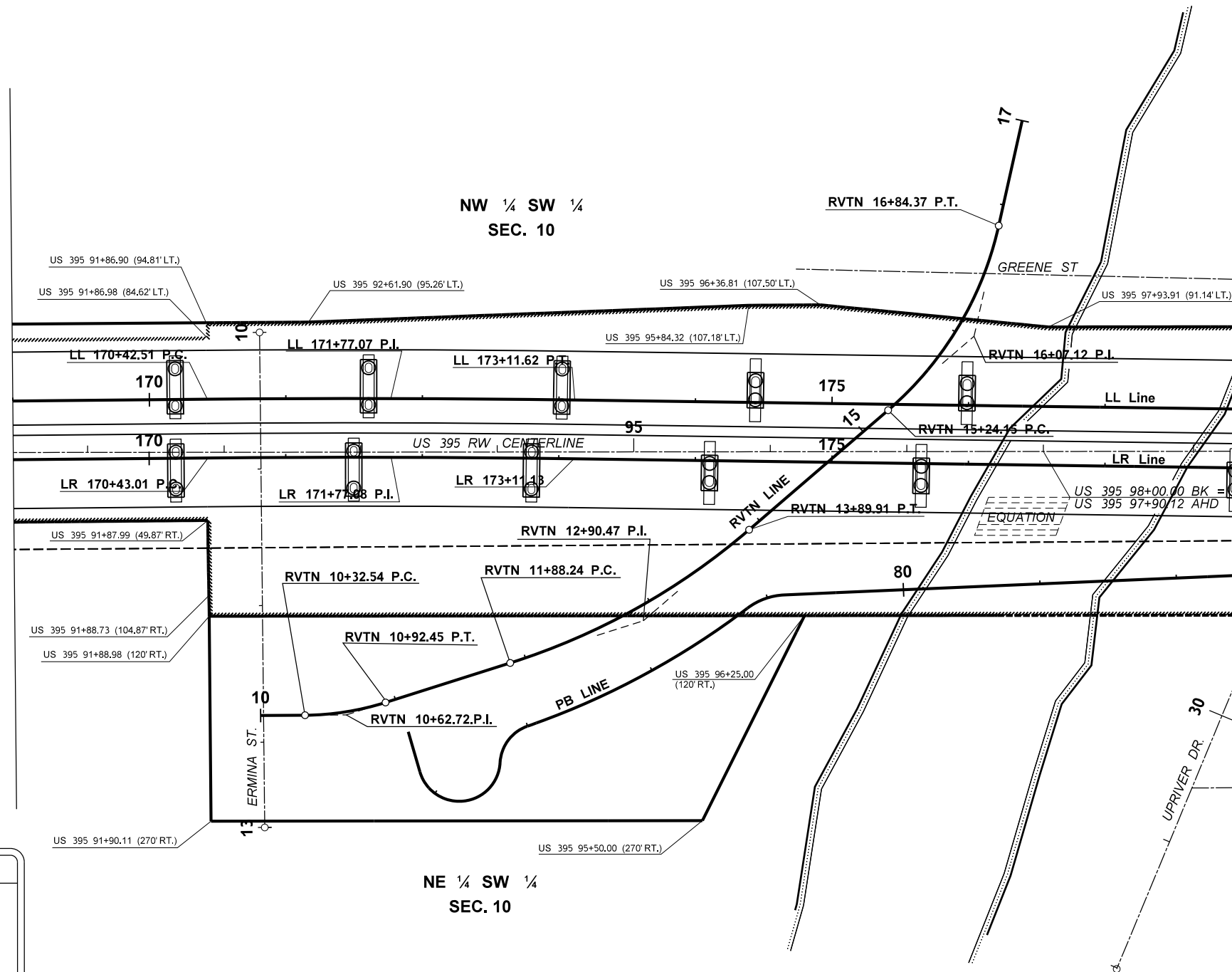


CURVE DATA				
P.I. STATION	DELTA	RADIUS	TANGENT	LENGTH
LL 171+77.07	1°18'15.38" RT.	11,821.50'	134.56'	269.10'
LL 171+77.08	1°18'15.38" RT.	11,778.50'	134.07'	268.12'
RVTN 10+62.72	17°09'49.70" LT.	200.00'	30.20'	60.00'
RVTN 12+90.47	23°06'35.24" LT.	500.00'	102.26'	201.67'
RVTN 16+07.12	36°43'18.64" LT.	250.00'	82.98'	160.23'

T.25N. R.43E. W.M.
CITY OF SPOKANE



LEGEND	
LIMITED ACCESS	
RIGHT OF WAY	
SIXTEENTH SECTION LINE	
ALIGNMENT	
EXISTING ALIGNMENT	

FILE NAME	G:\462503\XL5293 - US395 NSC Spokane River Crossing\04 Environmental\To Dustin\PS_AL_01.dgn			REGION NO.	STATE	FED.AID PROJ.NO.	Washington State Department of Transportation	US 395 / NSC SPOKANE RIVER CROSSING	PLAN REF NO
TIME	8:53:03 AM			10	WASH				AL1
DATE	2/4/2020			JOB NUMBER					
PLOTTED BY	lecatta			CONTRACT NO.		LOCATION NO.			
DESIGNED BY	N. McCafferty					XL5293			
ENTERED BY	L. PALOMINO								
CHECKED BY	T. LECATES								
PROJ. ENGR.	B. HILMES, P.E.								
REGIONAL ADM.	M. GRIBNER, P.E.			REVISION	DATE	BY	P.E. STAMP BOX	ALIGNMENT PLAN	SHEET 1 OF ?? SHEETS