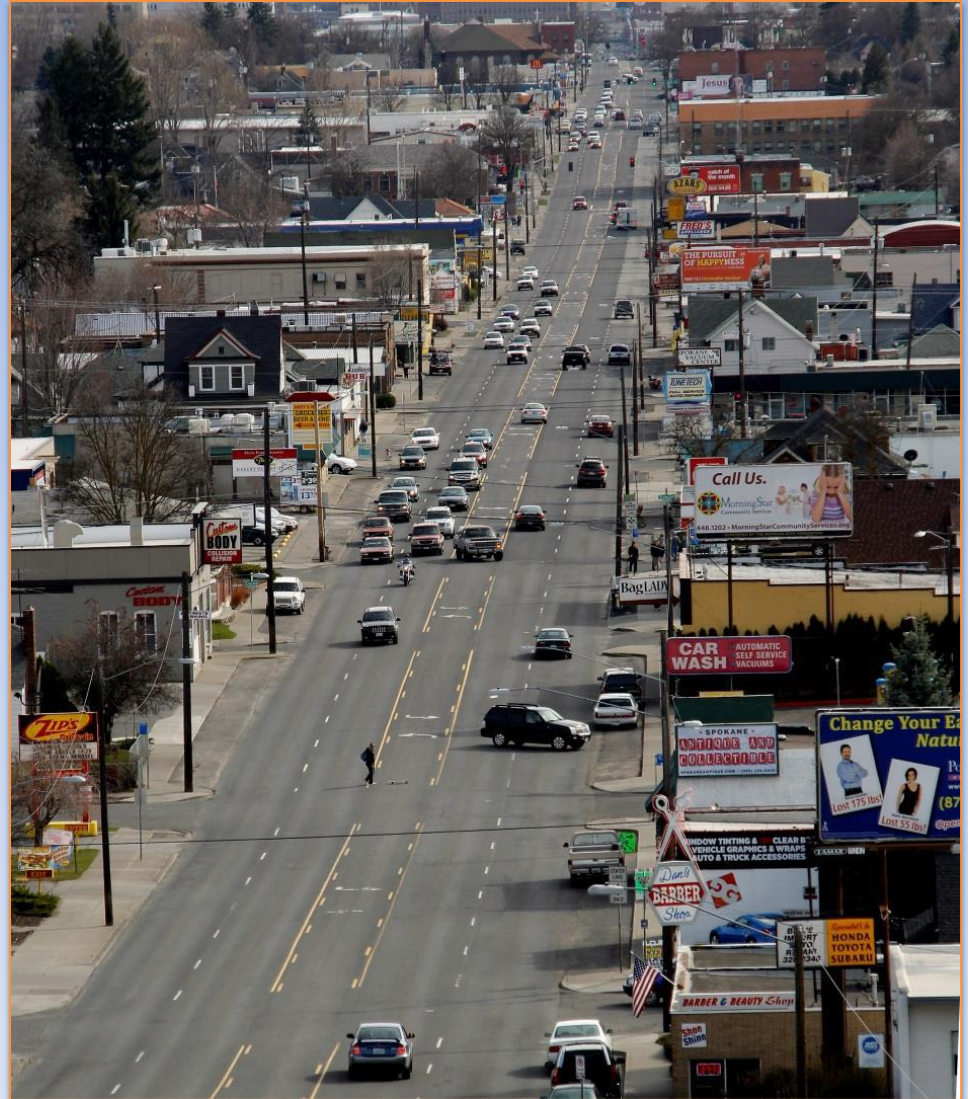
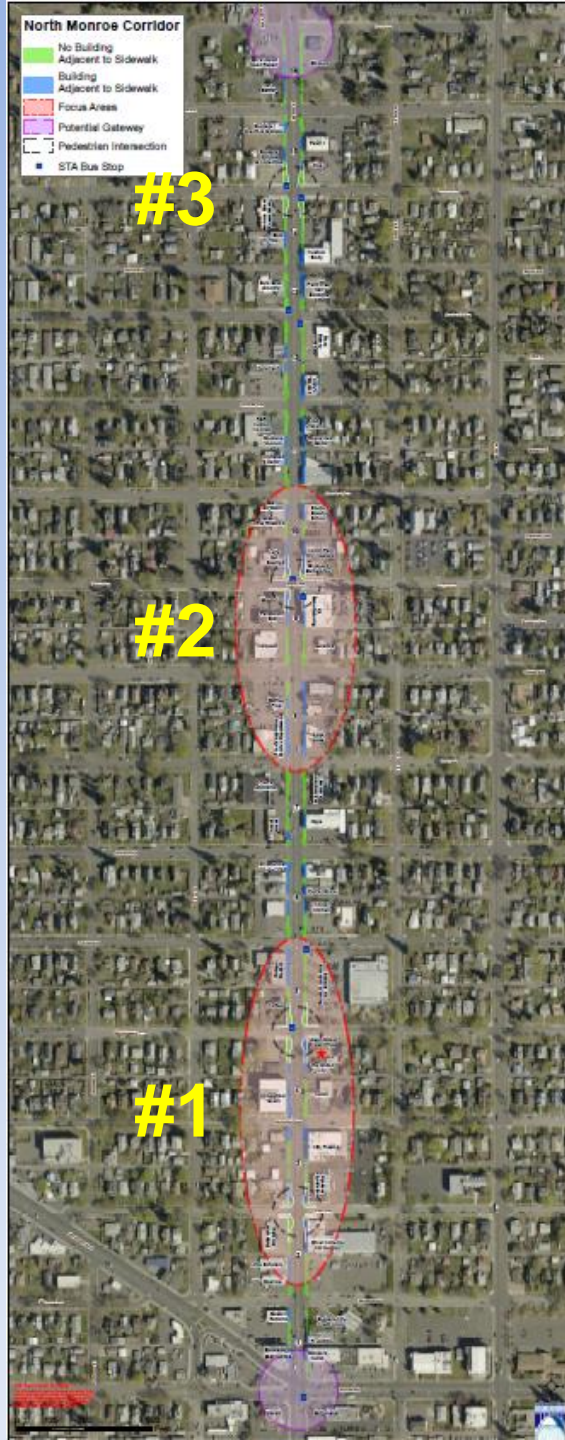


Monroe Street Project

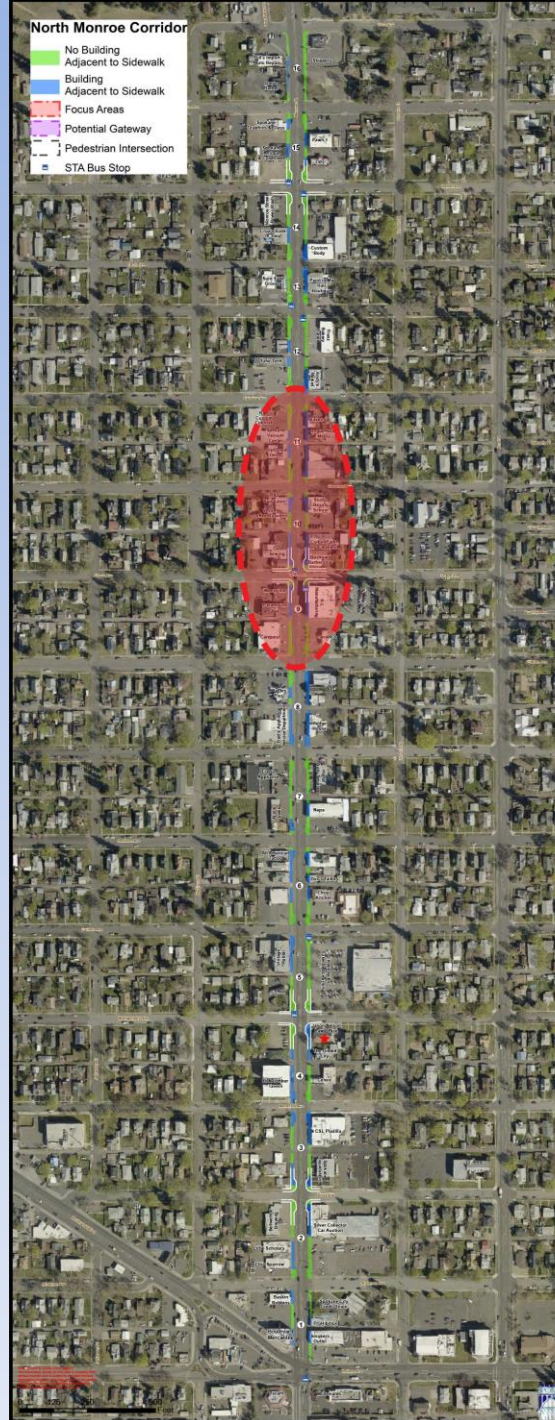
November 16, 2016



September 22, 2016



November 17, 2016



Focus Area

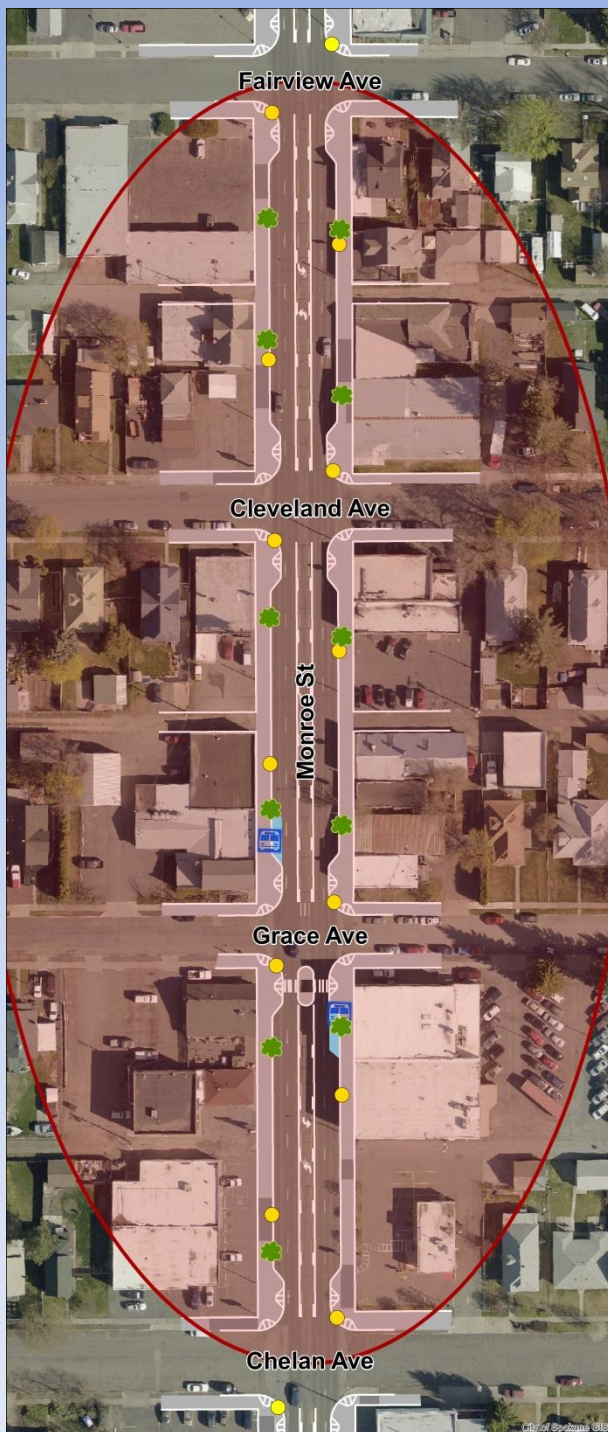
Dalton Ave

Grace Ave

Montgomery Ave

Standard

- Same throughout corridor
- 2 Pedestrian Lights per intersection with Street Lights
- Minimum Street Trees
- No furniture



● Street Lights

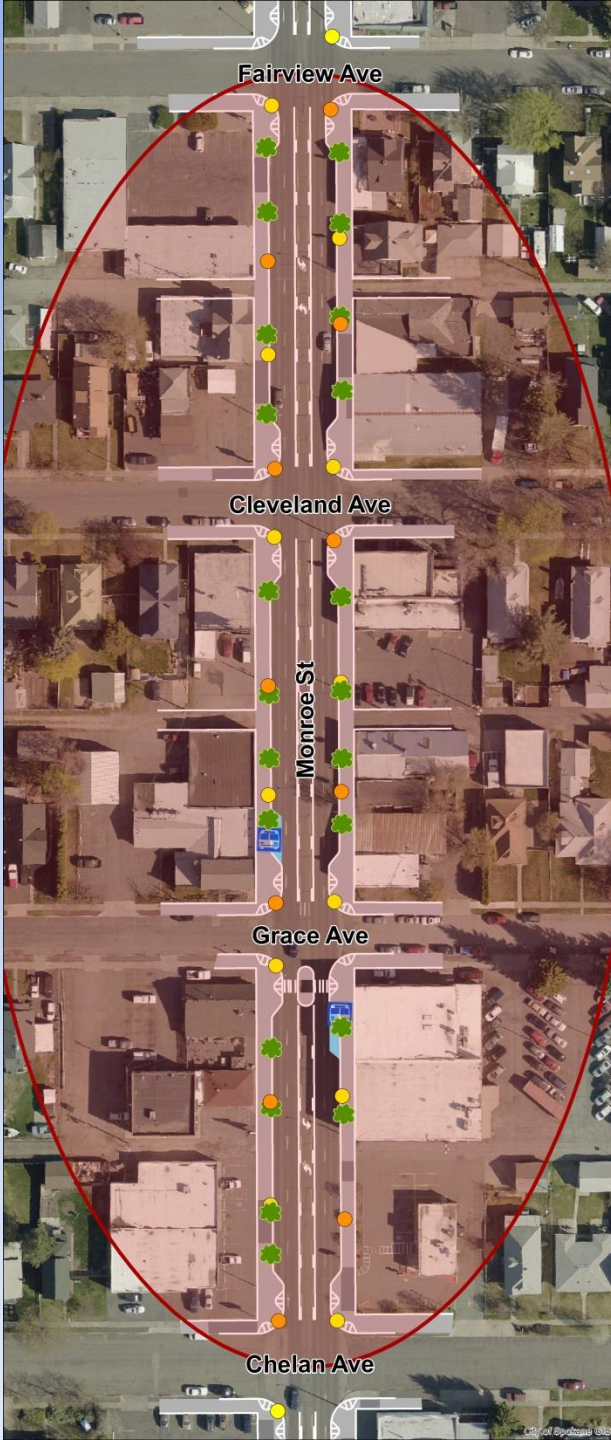
★ Trees



Bus Stop

Focus Area Options

- Pedestrian Lights Each Corner
- More Intense Tree and Ground Planting
- Color/Texture Sidewalk
- Street furniture



- Pedestrian Lights
- Street Lights
- ★ Trees
-  Bus Stop

Pedestrian Light Options



Street Furniture Options



Sidewalk Options



Stamped Concrete

Colored Concrete



Enhanced Pedestrian Crossings

Dalton Ave

Grace Ave

Other locations?

Montgomery Ave

North Monroe Corridor

- No Building
- Adjacent to Sidewalk
- Building
- Adjacent to Sidewalk
- Focus Areas
- Potential Gateway
- Pedestrian Intersection
- STA Bus Stop

Safety through Conflict Reduction

Safety comes through Reducing Conflicts

- 5-lane to 3-lane reduces:
 - Multi-lane weave
 - Blinding of pedestrians/vehicles
 - Number of lanes to cross
- Enhanced Crosswalks through:
 - Rectangular Rapid Flash Beacon
 - Pedestrian Refuge (limits LH turns for one dir.)
 - HAWK Signal (limits ALL left-hand turns)

Raised Medians



Beacon



Montgomery Intersection with Hawk Light



Montgomery Intersection with Beacon





Grace Intersection Standard



Grace Intersection with Focus Area Options



Transit Curb Height



Dalton Intersection



Lane Transition



Glass Hill Stormwater Swales



Glass Hill Swale

Existing Condition

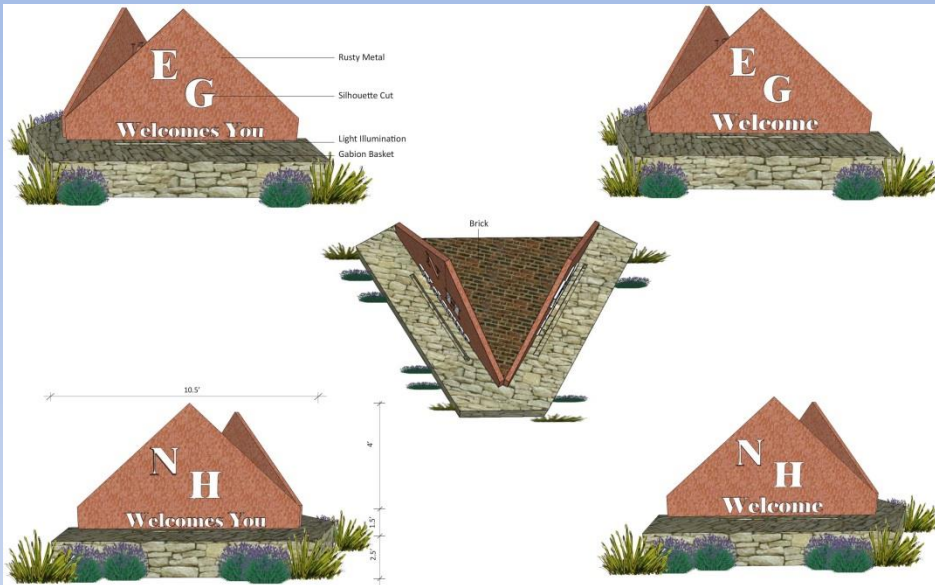


Proposed Swaleland

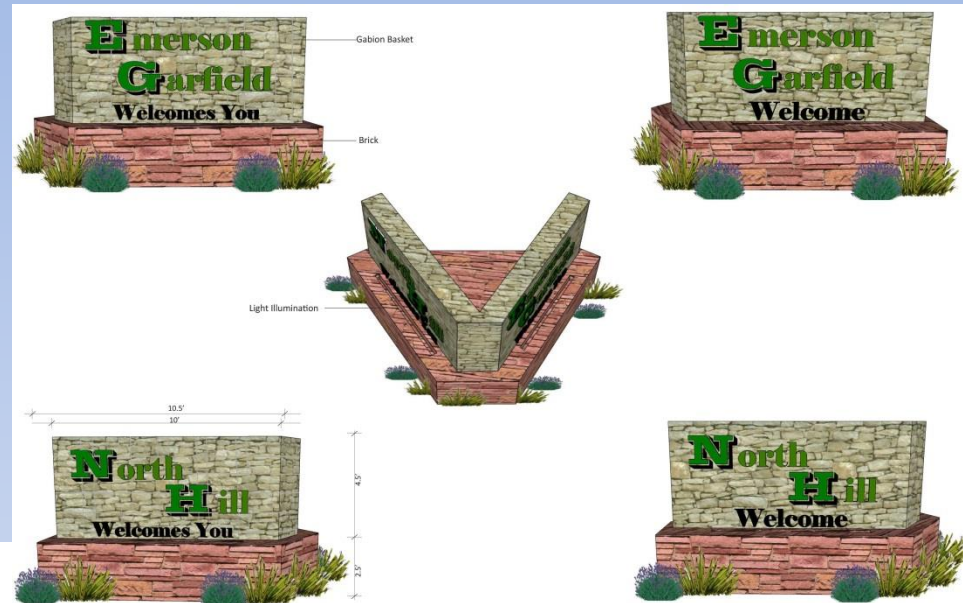


North Hill & Emerson Garfield Sign Design

Option 1



Option 2



Next Steps

- Feedback on options from Advisory Board
- Meet in 2 weeks to review updated visuals
- Online Open House, December 2016
- Public Meeting, January 2016

