

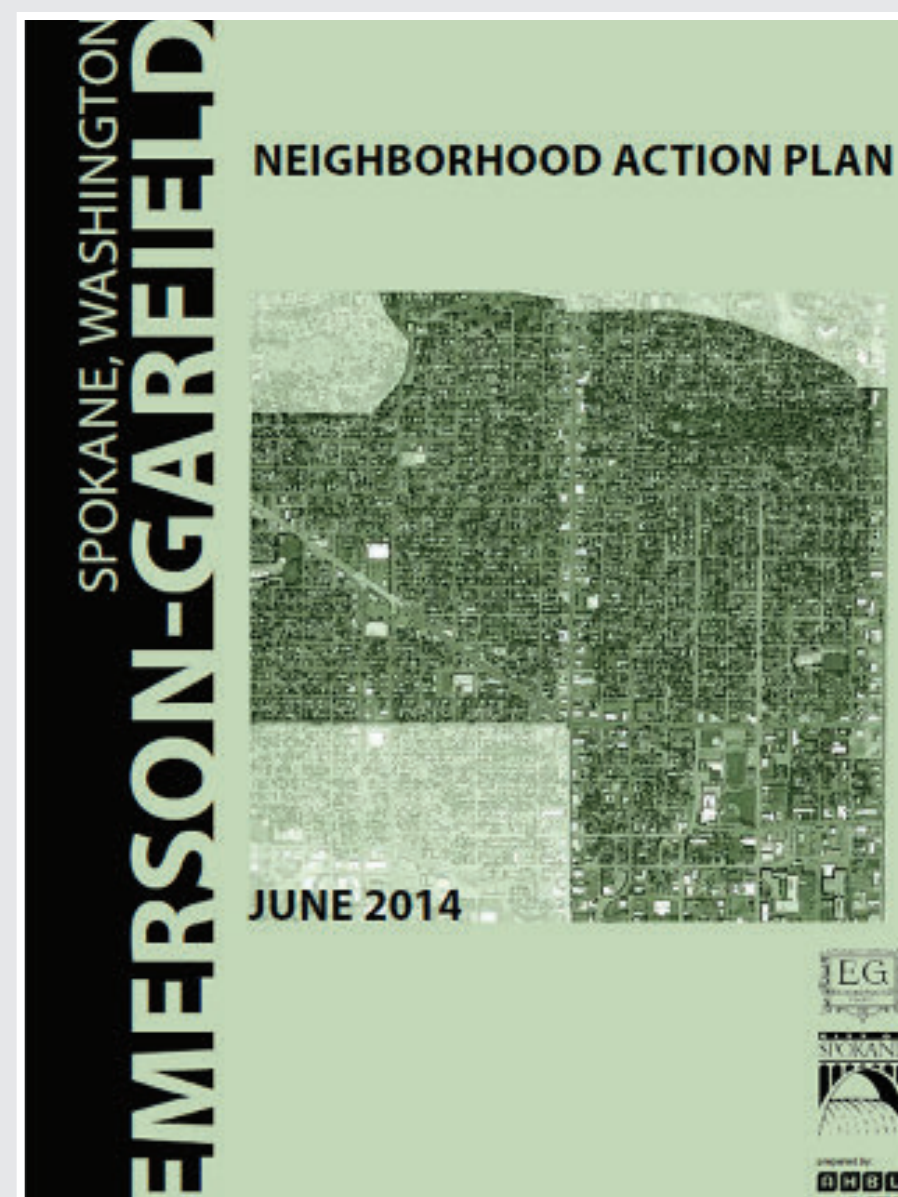
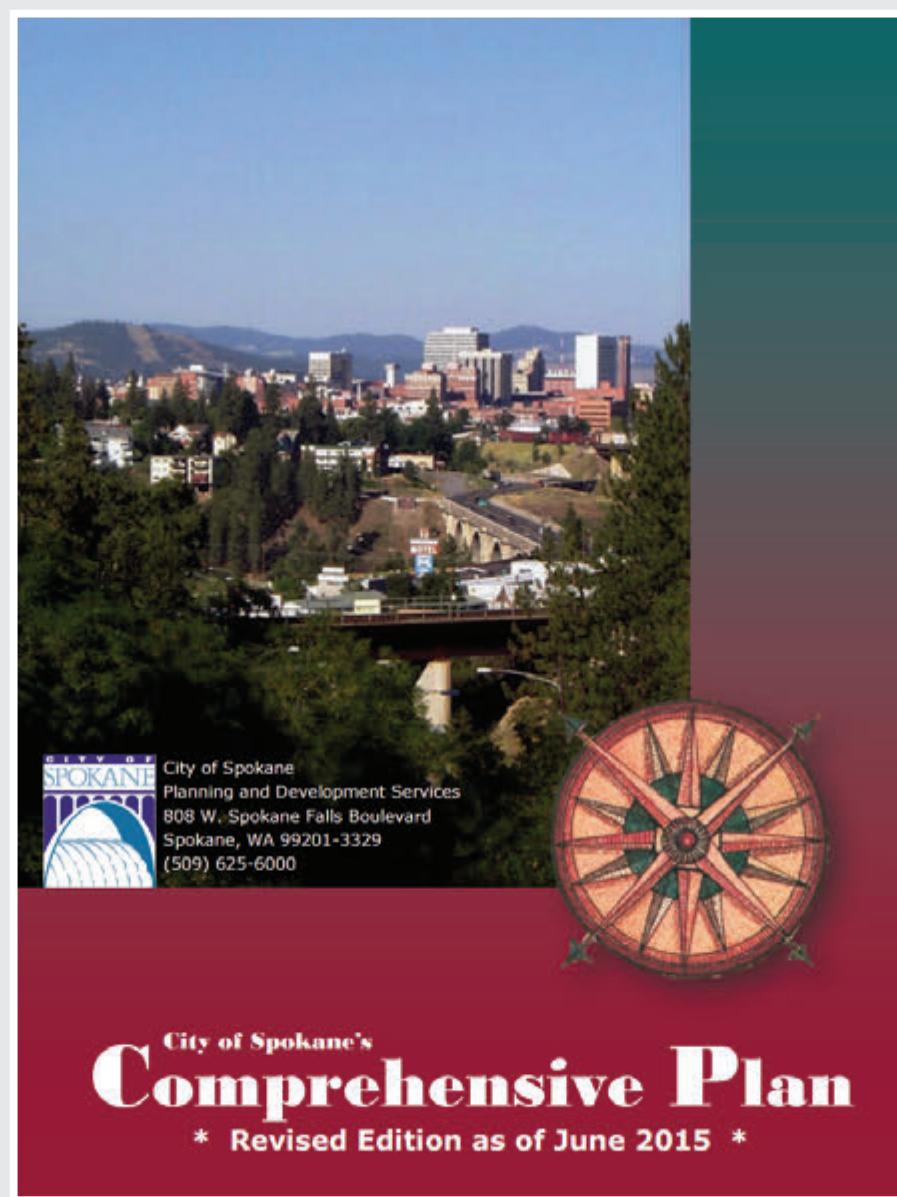


# North Monroe Corridor Project TRANSPORTATION

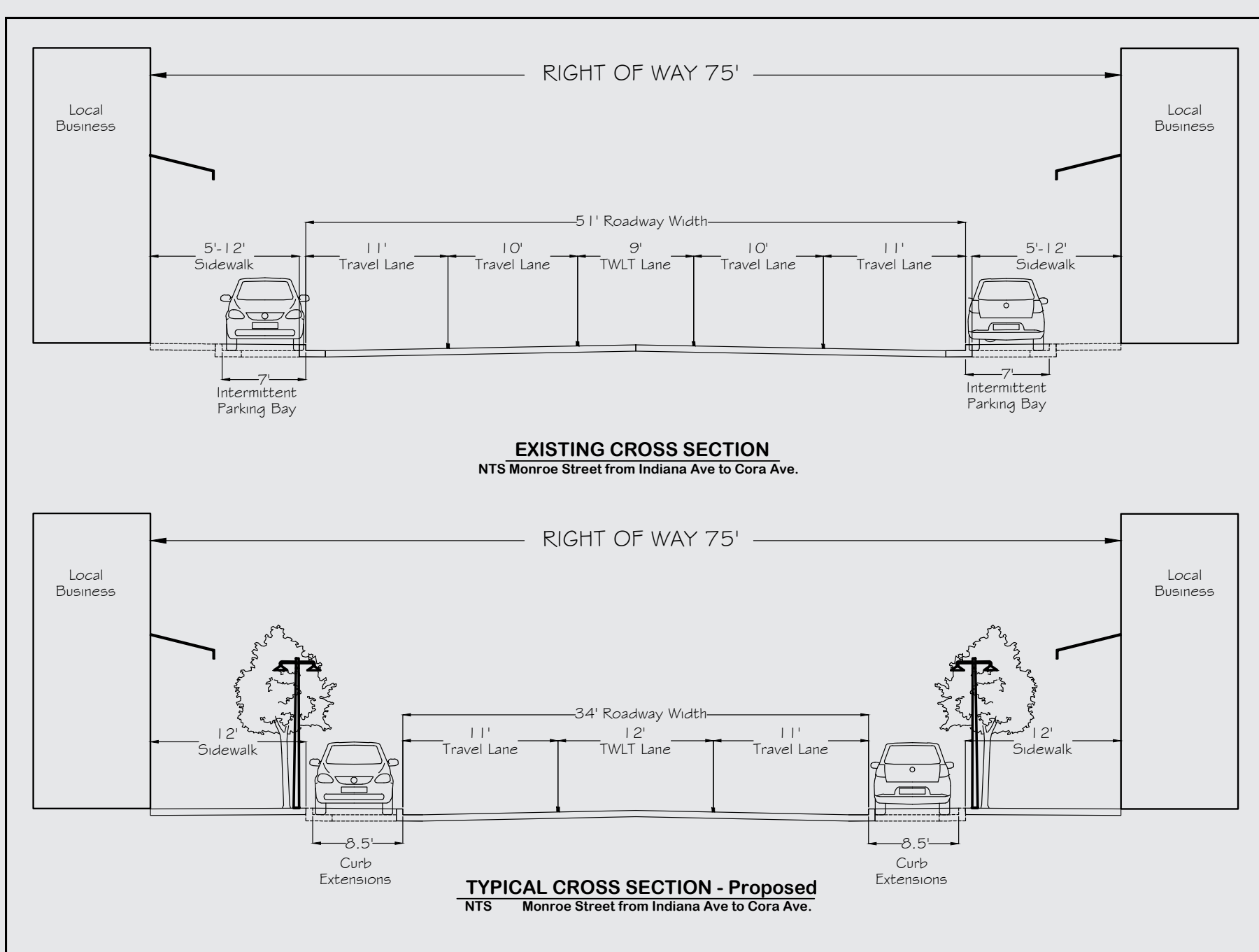
**\$4.6 million** Safety grant funds received for project

**\$2.5 million** Local funds added to project

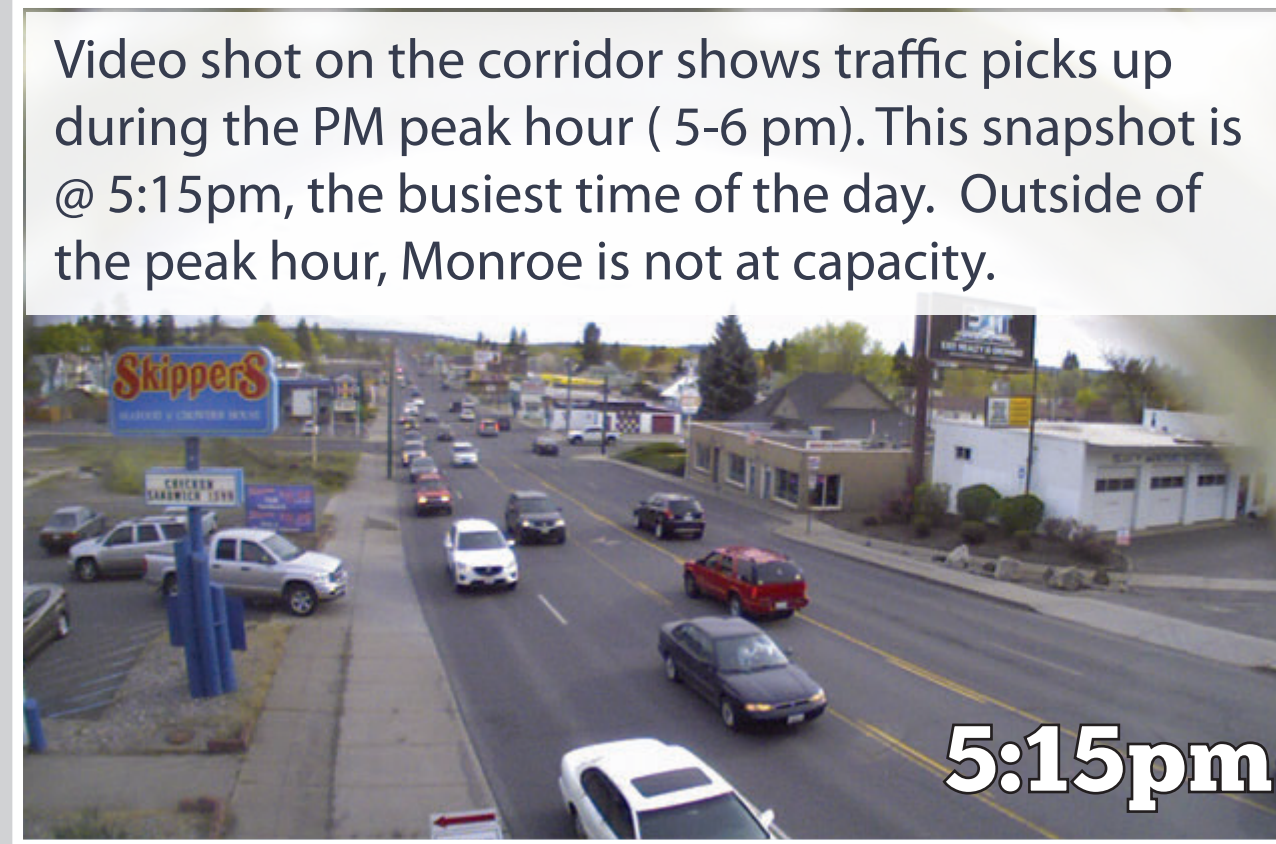
**\$7.1 million** total



The grant funding was applied for based on Council approved Comprehensive Plan and The Emerson-Garfield Neighborhood Plan.



To enhance safety, reduce points of conflict, create room for wider sidewalks, and roomier parking stalls, the project will configure Monroe from 5 lanes to 3 lanes.



Video shot on the corridor shows traffic picks up during the PM peak hour ( 5-6 pm). This snapshot is @ 5:15pm, the busiest time of the day. Outside of the peak hour, Monroe is not at capacity.



5:16pm



5:17pm

Two minutes later traffic picks up again. Notice, cars are not side-by-side. The narrow lanes make it uncomfortable to drive close to cars in adjacent lanes.



5:17:49pm



5:17:59pm

Traffic ebbs and flows in waves. Notice, between waves the roadway is fairly open. As a driver if you are in the wave, Monroe will definitely feel full. However, this does not mean the road is at capacity all of the time.

**How Will This Impact My Experience?** It depends on what you are planning to do on Monroe and how you get there.



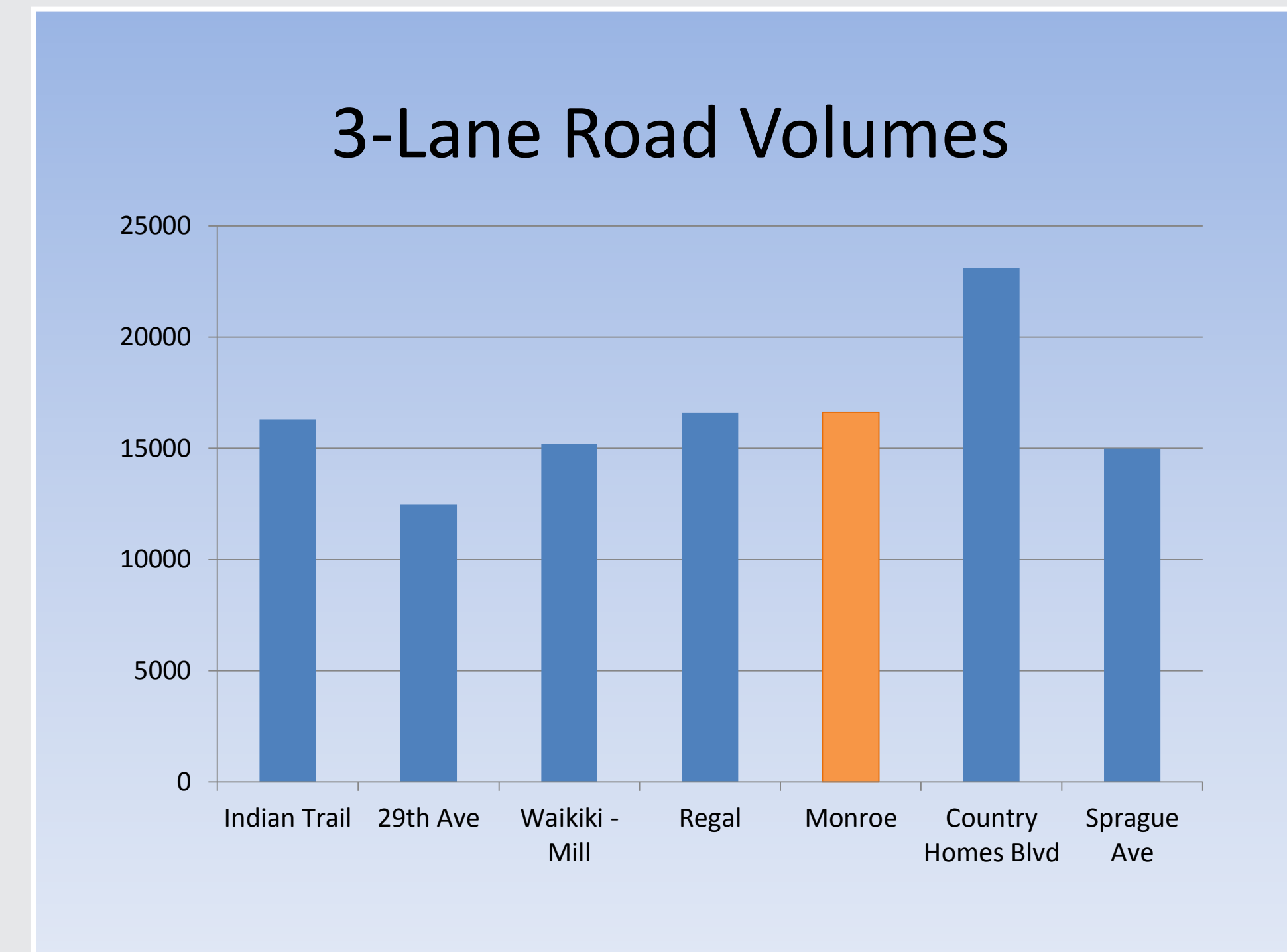
**Neighborhood Livability and Transit**  
Residents will experience a safer and more inviting shopping district. Bus users should see more efficient transit service with upgraded amenities.



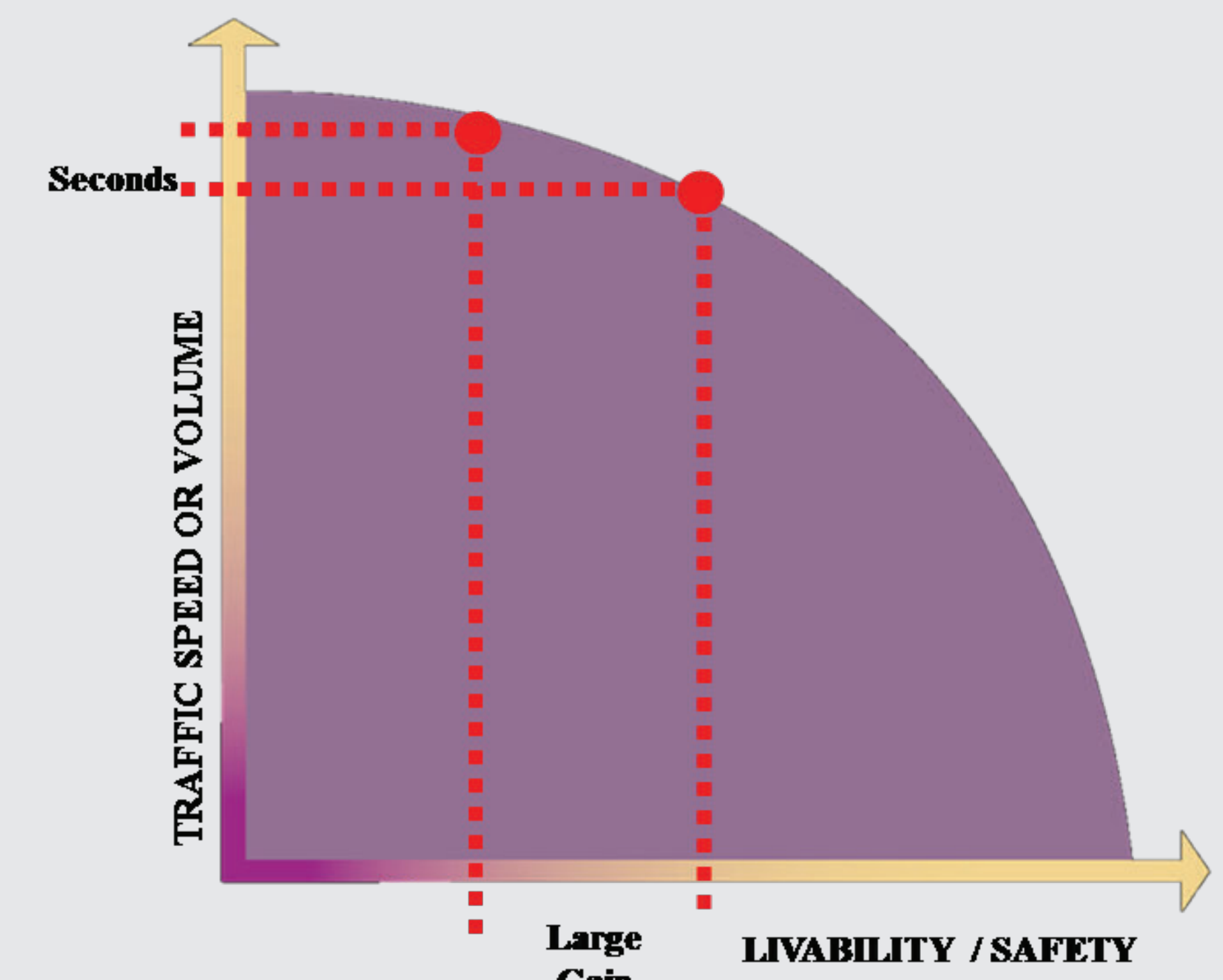
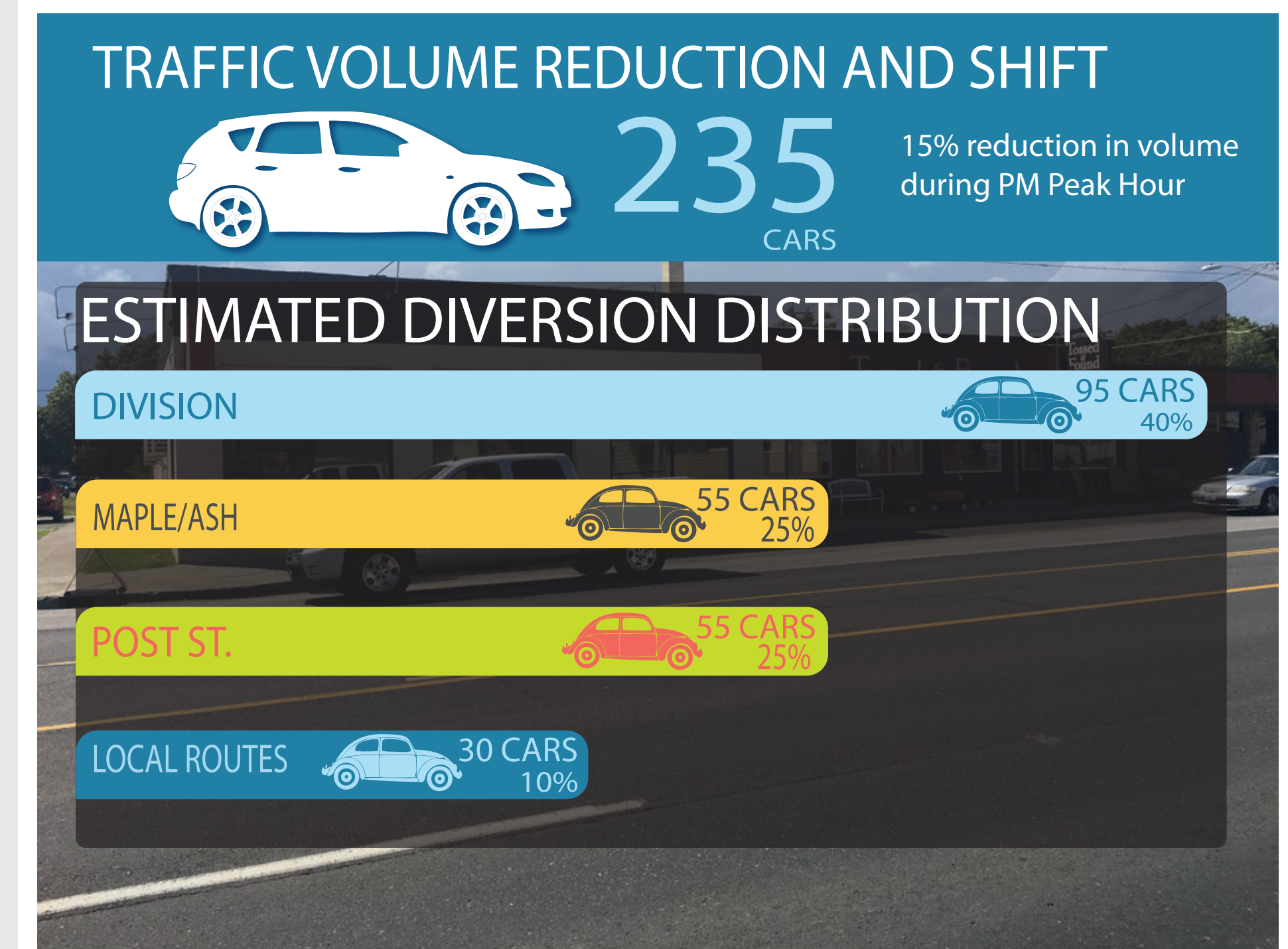
**Business & Retail Environment**  
If you visit the district for shopping and dining, your experience will greatly improve. The retail environment will benefit from an improved pedestrian realm and more visibility with traffic contained in single lanes.



**Commuting & Safety**  
Those who primarily commute through the neighborhood may experience a slight increase in travel time during the PM Peak Hour. This is part of the trade-off. We are trading a small amount of travel time for some users between 5-6pm to significantly increase safety, install wider parking stalls, new sidewalks, improve the walking experience, and make the neighborhood much more livable by connecting surrounding residential to the commercial corridor throughout the day.



**What Does a 3 Lane Monroe Do To Traffic?**  
Other communities have used 3 lane road configurations to accommodate up to 25,000 vehicles per day. Spokane has several 3-lane sections and is comfortable using this configuration on roads with up to 20,000 vehicles per day.



**When speed goes down, livability and safety go up**