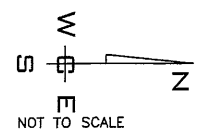
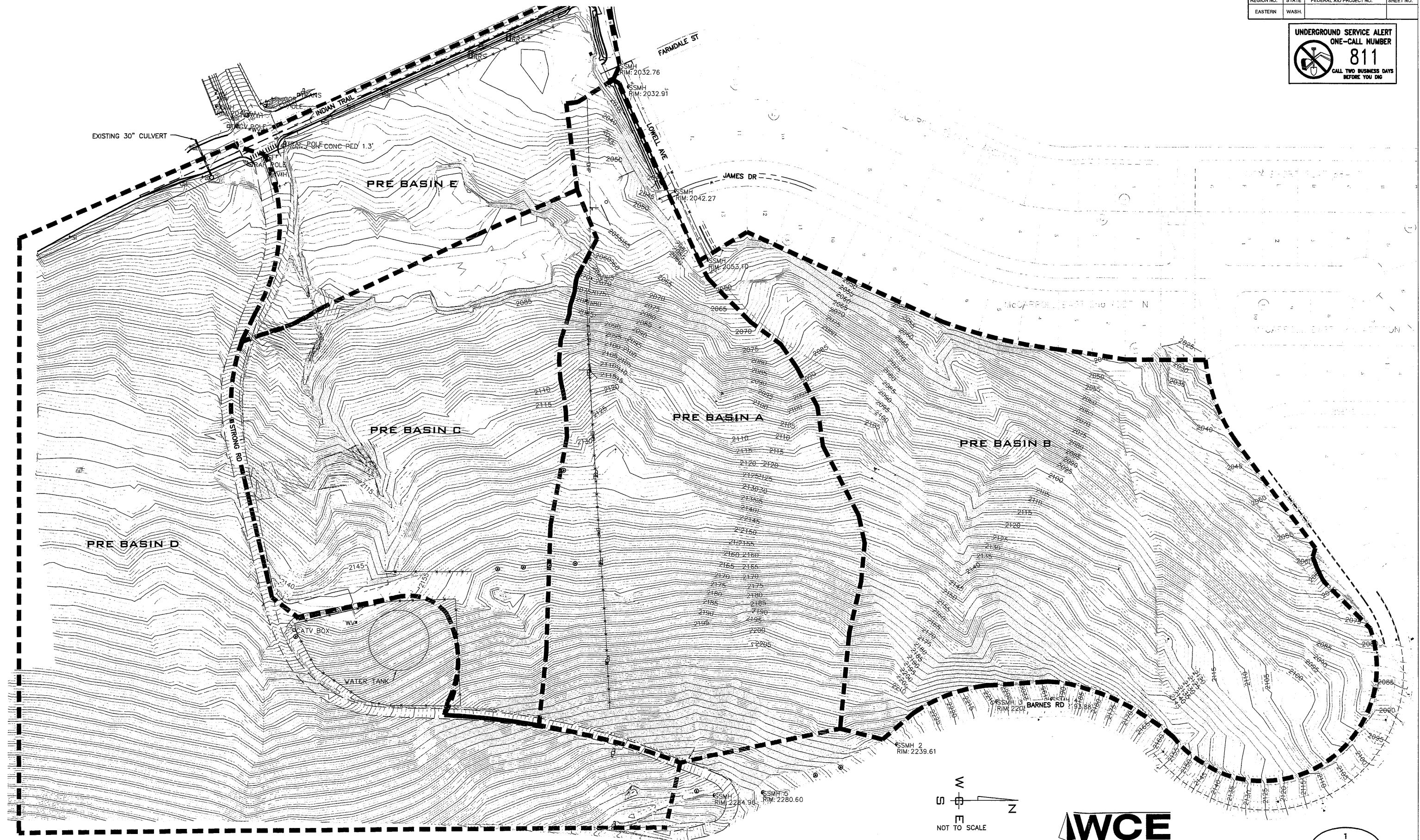


**UNDERGROUND SERVICE ALERT  
ONE-CALL NUMBER**

**811**

CALL TWO BUSINESS DAYS  
BEFORE YOU DIG



**IWCE**  
WHIPPLE CONSULTING ENGINEERS  
2525 NORTH SULLIVAN ROAD  
SPOKANE VALLEY, WA 99216  
PH: 509-893-2617 FAX: 509-926-0227

DATE	BY	PROJ.	DESCRIPTION	DATE	BY	PROJ.	E.F.N. - U.S.N.	FROM	TO	COUNCIL ACCEPT DATE	FROM	TO	ORD. NO.	DATE	FILE NO.
REVISIONS															
AS BUILT															
GRADE ORDINANCE LIST															

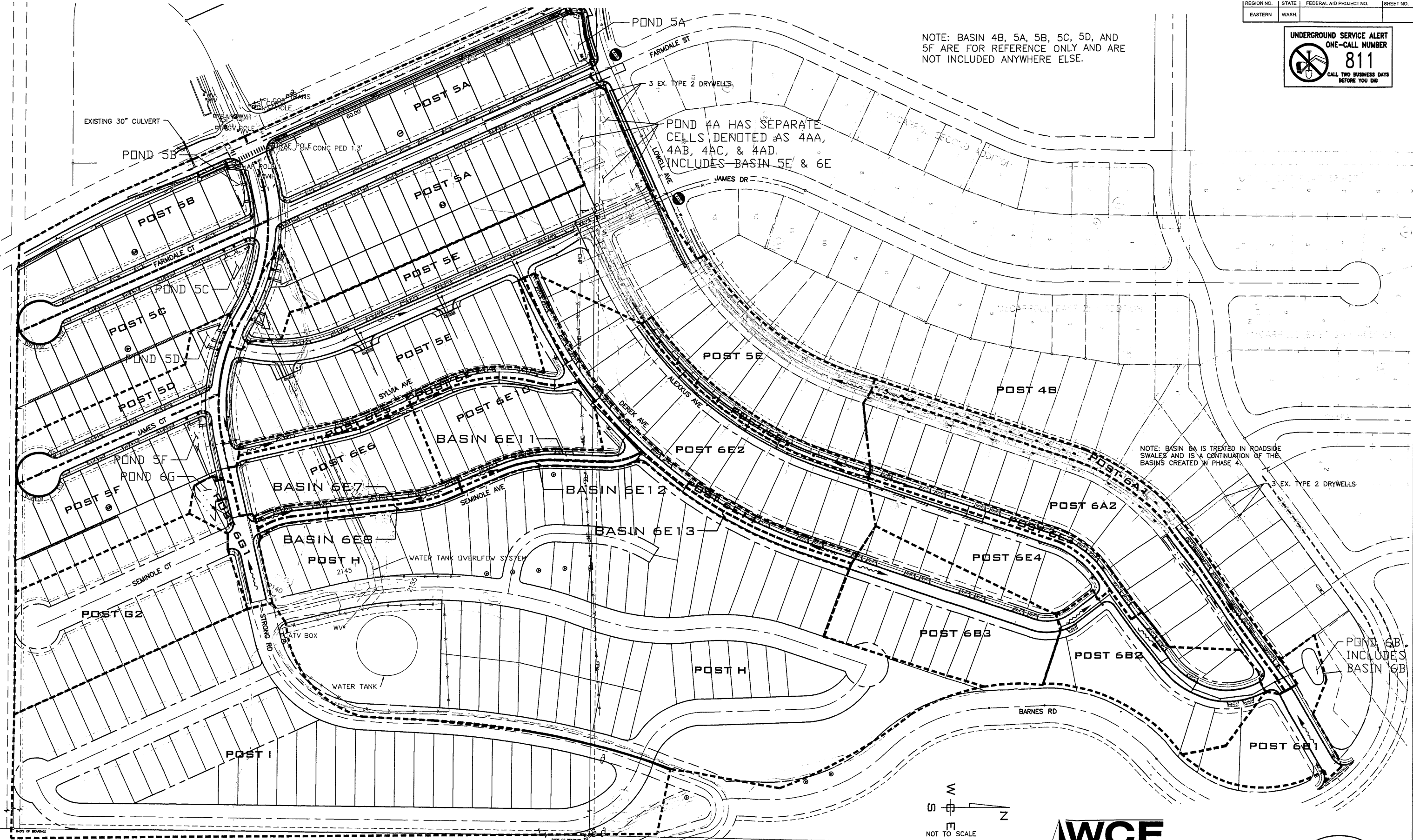
NAVDS8 = (OLD CBM ELEV.) - (13.13) AS OF JANUARY, 2000 USE NORTH AMERICAN VERTICAL DATUM OF 1988 (NAVDS8)	BENCHMARK LOCATION ARROWHEAD AND SHAWNEE NE CORNER 19.7 NWM, 1.2 EEC	CURRENT CITY/COUNTY DESIGN STANDARDS ADOPTED FEB. 2007
NAVDS8 ELEV. 1918.84	DAR IS ONE INCH ON ORIGINAL DRAWING.	HORIZONTAL PLAN/PROFILE N/A
CBM NO. 9S 7E	IF NOT ONE INCH ON THIS SHEET, ADJUST SCALES ACCORDINGLY	VERTICAL PROFILE ONLY N/A
NAVDS8 DATUM	SCALE	

**SPOKANE**  
CITY OF SPOKANE, WASHINGTON  
DEPARTMENT OF ENGINEERING SERVICES  
808 WEST SPOKANE FALLS BLVD.  
SPOKANE, WASHINGTON 99201-3343  
(509) 625-6300

PROJECT NAME: MCCARROLLS EAST 6TH ADDITION		TYPE OF IMPROVEMENT: STORM	
SEGMENT LIMITS: OVERALL PRE-BASIN MAP		CITY PROJECT NUMBER: CITY PLAN NUMBER	
PROJECT LIMITS: INDIAN TRAIL RD AND BARNES RD		BASIN MAP 22-26-42	

**UNDERGROUND SERVICE ALERT**  
**ONE-CALL NUMBER**  
**811**  
CALL TWO BUSINESS DAYS BEFORE YOU DIG

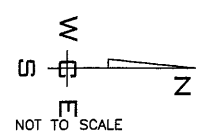
NOTE: BASIN 4B, 5A, 5B, 5C, 5D, AND 5F ARE FOR REFERENCE ONLY AND ARE NOT INCLUDED ANYWHERE ELSE.



POND 4A HAS SEPARATE CELLS DENOTED AS 4AA, 4AB, 4AC, & 4AD. INCLUDES BASIN 5E & 6E

NOTE: BASIN 6A IS TREATED IN ROADSIDE SWALES AND IS A CONTINUATION OF THE BASINS CREATED IN PHASE 4.

POND 6B INCLUDES BASIN 6B



**WCE**  
WHIPPLE CONSULTING ENGINEERS  
2528 NORTH SULLIVAN ROAD  
SPOKANE VALLEY, WA 99216  
PH: 509-893-2617 FAX: 509-926-0227

2  
2 OF 2

<p>NAV88 = (OLD CSM ELEV.) - (13.13) AS OF JANUARY, 2000 USE NORTH AMERICAN VERTICAL DATUM OF 1988 (NAVD88)</p> <p>BENCH MARK LOCATION: ARROWHEAD AND SHAWNEE NE CORNER 19.7 NWM, 1.2 EEC</p> <p>NAV88 ELEV: 918.84</p> <p>CSM NO: 9S 7E</p> <p>NAV88 DATUM</p>										<p>CURRENT CITY/COUNTY DESIGN STANDARDS ADOPTED FEB, 2007</p> <p>BY: JPP 01/05/17</p> <p>REVISIONS: TRW 01/08/17</p> <p>APPROVED: TRW 01/08/17</p>										<p><b>SPOKANE</b></p> <p><b>CITY OF SPOKANE, WASHINGTON</b></p> <p>DEPARTMENT OF ENGINEERING SERVICES</p> <p>808 WEST SPOKANE FALLS BLVD. SPOKANE, WASHINGTON 99201-3343 (509) 625-6300</p>										<p>PROJECT NAME: <b>MCCARROLLS EAST 6TH ADDITION</b></p> <p>SEGMENT LIMITS: <b>5TH ADDITION POST-BASIN MAP</b></p> <p>PROJECT LIMITS: INDIAN TRAIL RD AND BARNES RD</p>										<p>TYPE OF IMPROVEMENT: <b>STORM</b></p> <p>CITY PROJECT NUMBER: <b>BASIN MAP 22-26-42</b></p> <p>CITY PLAN NUMBER: <b>22-26-42</b></p>									
<p>DATE BY PROJ DESCRIPTION DATE BY PROJ E.F.N. U.S.N. FROM TO COUNCIL ACCEPT DATE FROM TO ORD. NO. DATE FILE NO.</p>										<p>REVISIONS AS BUILT GRADE ORDINANCE LIST</p>										<p>SCALE: HORIZONTAL PLAN: 1"=100' VERTICAL PROFILE ONLY: N/A</p>										<p>IF NOT ONE INCH ON THIS SHEET, ADJUST SCALES ACCORDINGLY</p>																			