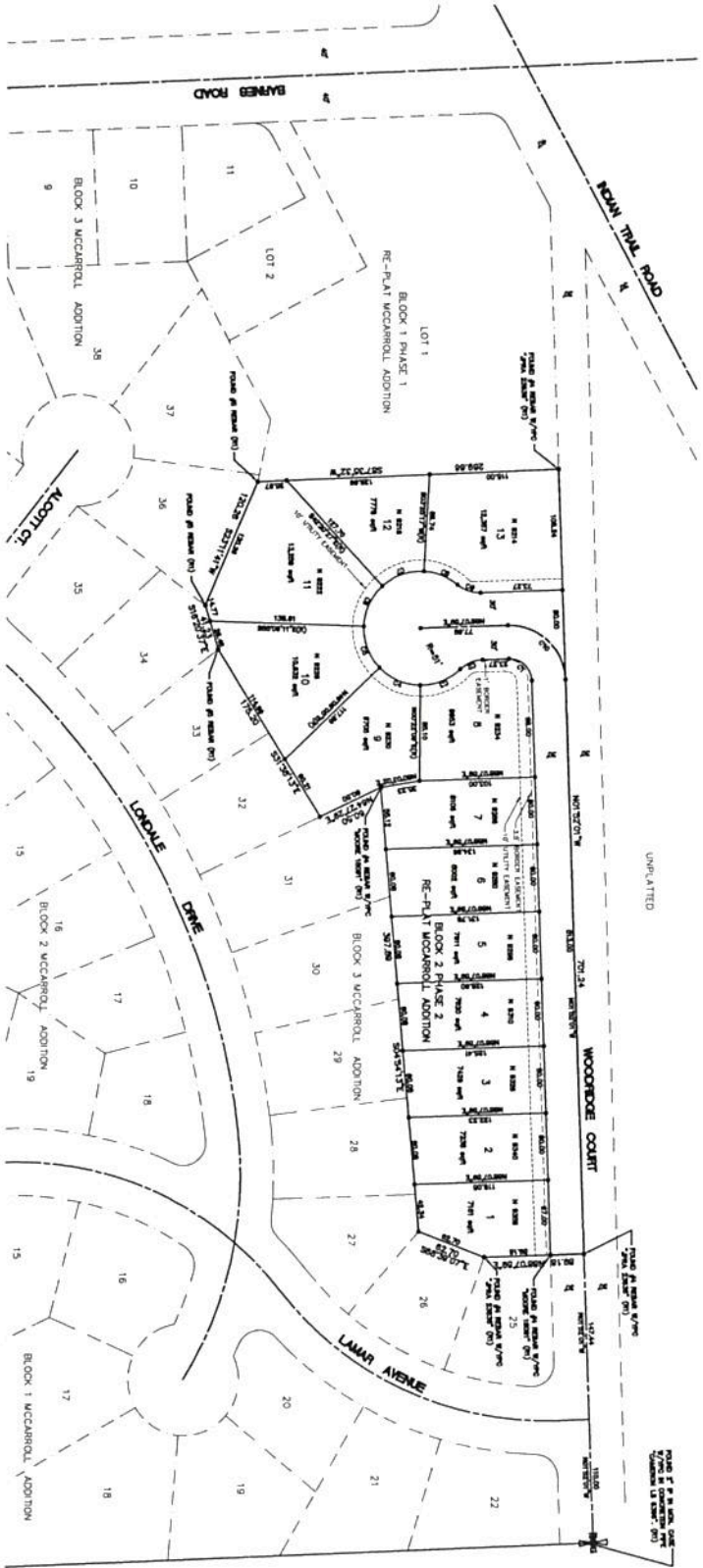


# FINAL PLAT OF RE-PLAT MCCARROLL ADDITION - PHASE 2

LOCATED IN THE NORTH EAST QUARTER OF  
SECTION 22, TOWNSHIP 28 NORTH, RANGE 42 EAST W1M,  
CITY OF SPOKANE, SPOKANE COUNTY, WASHINGTON  
FILE # 1 Z5900087P1LT



**SPOKANE COUNTY ASSessor'S OFFICE**  
FILED FOR RECORD IN THE CLERK'S OFFICE OF SPOKANE COUNTY, WASHINGTON, THIS 15TH DAY OF JUNE 2015.  
AT THE REQUEST OF \_\_\_\_\_  
SPOKANE COUNTY CLERK BY DEPUTY

**NOTICE OF RECORDING**  
THIS PLAT OF RE-PLAT MCCARROLL ADDITION - PHASE 2, FILED FOR RECORD IN THE CLERK'S OFFICE OF SPOKANE COUNTY, WASHINGTON, ON JUNE 15, 2015, AT 10:00 AM. THE PLAT IS SUBJECT TO THE SPOKANE COUNTY PLAT ACT, RCW 65A.02.010, WHICH PROVIDES THAT A PLAT IS NOT VALID UNLESS IT IS FILED FOR RECORD IN THE CLERK'S OFFICE OF SPOKANE COUNTY, WASHINGTON, AND IS SUBJECT TO THE SPOKANE COUNTY PLAT ACT, RCW 65A.02.010.

**EXEMPTION & PROVISIONS**  
THIS PLAT IS EXEMPT FROM THE REQUIREMENTS OF RCW 65A.02.010, RCW 65A.02.020, RCW 65A.02.030, RCW 65A.02.040, RCW 65A.02.050, RCW 65A.02.060, RCW 65A.02.070, RCW 65A.02.080, RCW 65A.02.090, RCW 65A.02.100, RCW 65A.02.110, RCW 65A.02.120, RCW 65A.02.130, RCW 65A.02.140, RCW 65A.02.150, RCW 65A.02.160, RCW 65A.02.170, RCW 65A.02.180, RCW 65A.02.190, RCW 65A.02.200, RCW 65A.02.210, RCW 65A.02.220, RCW 65A.02.230, RCW 65A.02.240, RCW 65A.02.250, RCW 65A.02.260, RCW 65A.02.270, RCW 65A.02.280, RCW 65A.02.290, RCW 65A.02.300, RCW 65A.02.310, RCW 65A.02.320, RCW 65A.02.330, RCW 65A.02.340, RCW 65A.02.350, RCW 65A.02.360, RCW 65A.02.370, RCW 65A.02.380, RCW 65A.02.390, RCW 65A.02.400, RCW 65A.02.410, RCW 65A.02.420, RCW 65A.02.430, RCW 65A.02.440, RCW 65A.02.450, RCW 65A.02.460, RCW 65A.02.470, RCW 65A.02.480, RCW 65A.02.490, RCW 65A.02.500, RCW 65A.02.510, RCW 65A.02.520, RCW 65A.02.530, RCW 65A.02.540, RCW 65A.02.550, RCW 65A.02.560, RCW 65A.02.570, RCW 65A.02.580, RCW 65A.02.590, RCW 65A.02.600, RCW 65A.02.610, RCW 65A.02.620, RCW 65A.02.630, RCW 65A.02.640, RCW 65A.02.650, RCW 65A.02.660, RCW 65A.02.670, RCW 65A.02.680, RCW 65A.02.690, RCW 65A.02.700, RCW 65A.02.710, RCW 65A.02.720, RCW 65A.02.730, RCW 65A.02.740, RCW 65A.02.750, RCW 65A.02.760, RCW 65A.02.770, RCW 65A.02.780, RCW 65A.02.790, RCW 65A.02.800, RCW 65A.02.810, RCW 65A.02.820, RCW 65A.02.830, RCW 65A.02.840, RCW 65A.02.850, RCW 65A.02.860, RCW 65A.02.870, RCW 65A.02.880, RCW 65A.02.890, RCW 65A.02.900, RCW 65A.02.910, RCW 65A.02.920, RCW 65A.02.930, RCW 65A.02.940, RCW 65A.02.950, RCW 65A.02.960, RCW 65A.02.970, RCW 65A.02.980, RCW 65A.02.990, RCW 65A.02.1000.

BLK	LOT	AREA (SQ FT)	PERCENT
1	1	10,000	100
1	2	10,000	100
1	3	10,000	100
1	4	10,000	100
1	5	10,000	100
1	6	10,000	100
1	7	10,000	100
1	8	10,000	100
1	9	10,000	100
1	10	10,000	100
1	11	10,000	100
1	12	10,000	100
2	13	10,000	100
2	14	10,000	100
2	15	10,000	100
2	16	10,000	100
2	17	10,000	100
2	18	10,000	100
2	19	10,000	100
2	20	10,000	100
2	21	10,000	100
2	22	10,000	100
3	23	10,000	100
3	24	10,000	100
3	25	10,000	100
3	26	10,000	100
3	27	10,000	100
3	28	10,000	100
3	29	10,000	100
3	30	10,000	100
3	31	10,000	100
3	32	10,000	100
3	33	10,000	100
3	34	10,000	100
3	35	10,000	100
3	36	10,000	100
3	37	10,000	100
3	38	10,000	100



**STATEMENT OF WORK**  
THIS PLAT IS THE RESULT OF THE PROFESSIONAL SERVICE PROVIDED BY THE ENGINEER AND ARCHITECT IN ACCORDANCE WITH THE PROFESSIONAL STANDARDS OF THE ENGINEERING AND ARCHITECTURAL BOARDS OF THE STATE OF WASHINGTON. THE ENGINEER AND ARCHITECT ASSUME NO LIABILITY FOR THE ACCURACY OR COMPLETION OF THE PLAT AND STREET DIMENSIONS.

**CONTRACT NO. 15-01-001**  
SPOKANE COUNTY AND LAND SERVICES

**LEGEND**

- 1/4 Section Boundary
- Block Boundary
- Lot Boundary
- Utility Boundary
- Other Boundary
- Easement Boundary

**SPANGON ARCHITECTS, INC.**  
REGISTERED PROFESSIONAL ARCHITECTS  
CIVIL ENGINEERS & LAND SURVEYORS  
N. 909 ARCADE ROAD, SPOKANE VALLEY, WA, 99312-2789  
PHONE (509) 898-1282 FAX (509) 898-1283

