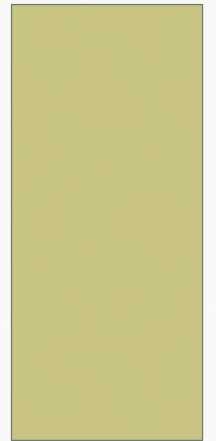


MAYOR'S HOUSING QUALITY TASK FORCE

SPOKANE'S HOUSING



HQT Online Resource

- [Housing Quality Task Force](#)
- Charter
- Work Plan
- Timeline
- Task Force Members
 - Sub-committees

Housing Stock Average in Spokane

Total Housing	
Total Housing Units	95,394
Single Family	65,521
Duplex	3,140
3-4 units	5,112
5 or more units	20,994
Mobile Home	1,691

*Data from U.S. Census Data (2010-2014 ACS 5 year estimates)

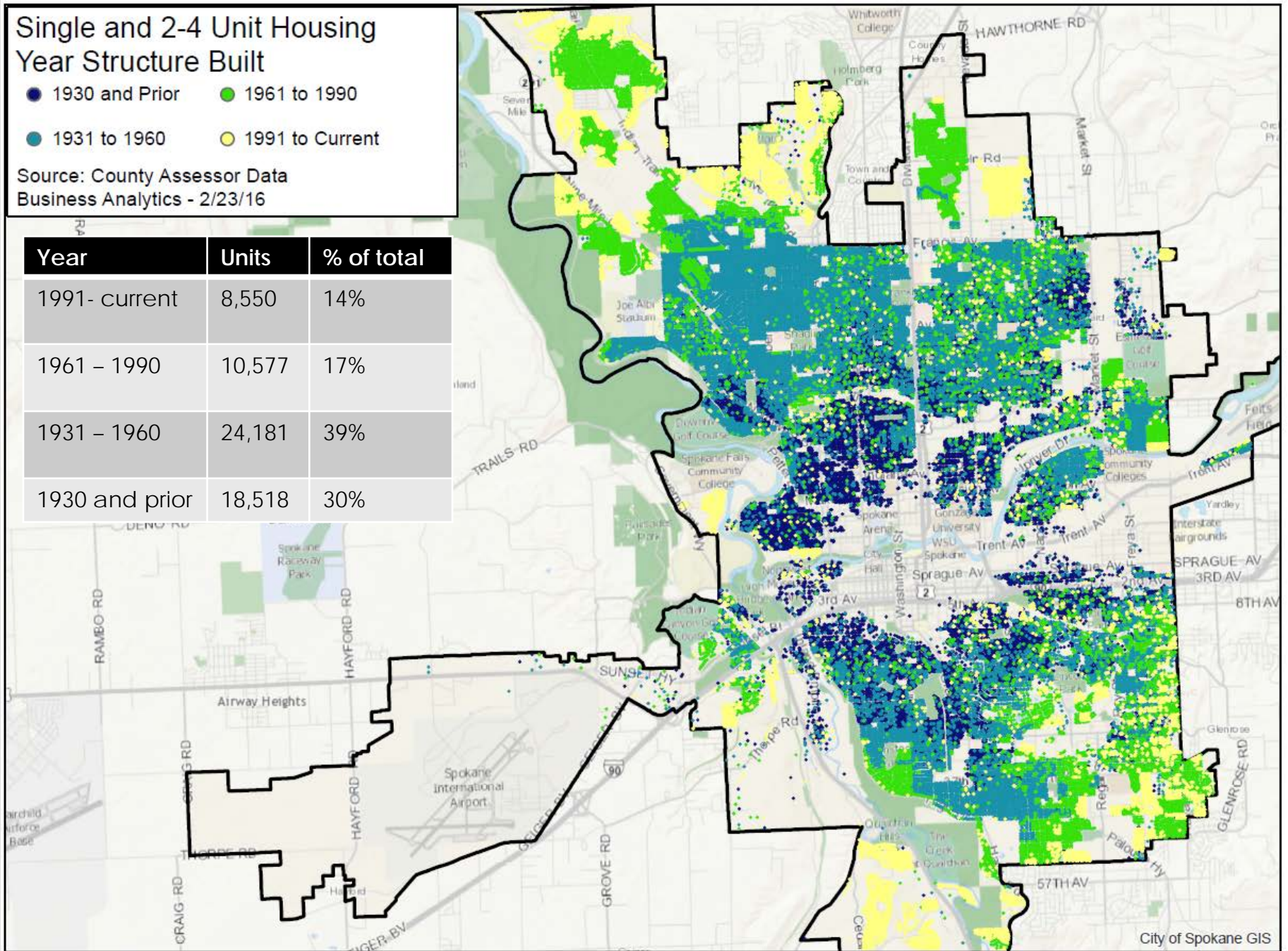
Occupied Housing		
Occupied Housing Units	87,235	
Owner Occupied	49,037	56%
Renter Occupied	38,198	44%

Single and 2-4 Unit Housing Year Structure Built

- 1930 and Prior
- 1931 to 1960
- 1961 to 1990
- 1991 to Current

Source: County Assessor Data
Business Analytics - 2/23/16

Year	Units	% of total
1991- current	8,550	14%
1961 – 1990	10,577	17%
1931 – 1960	24,181	39%
1930 and prior	18,518	30%



County Assessor Data

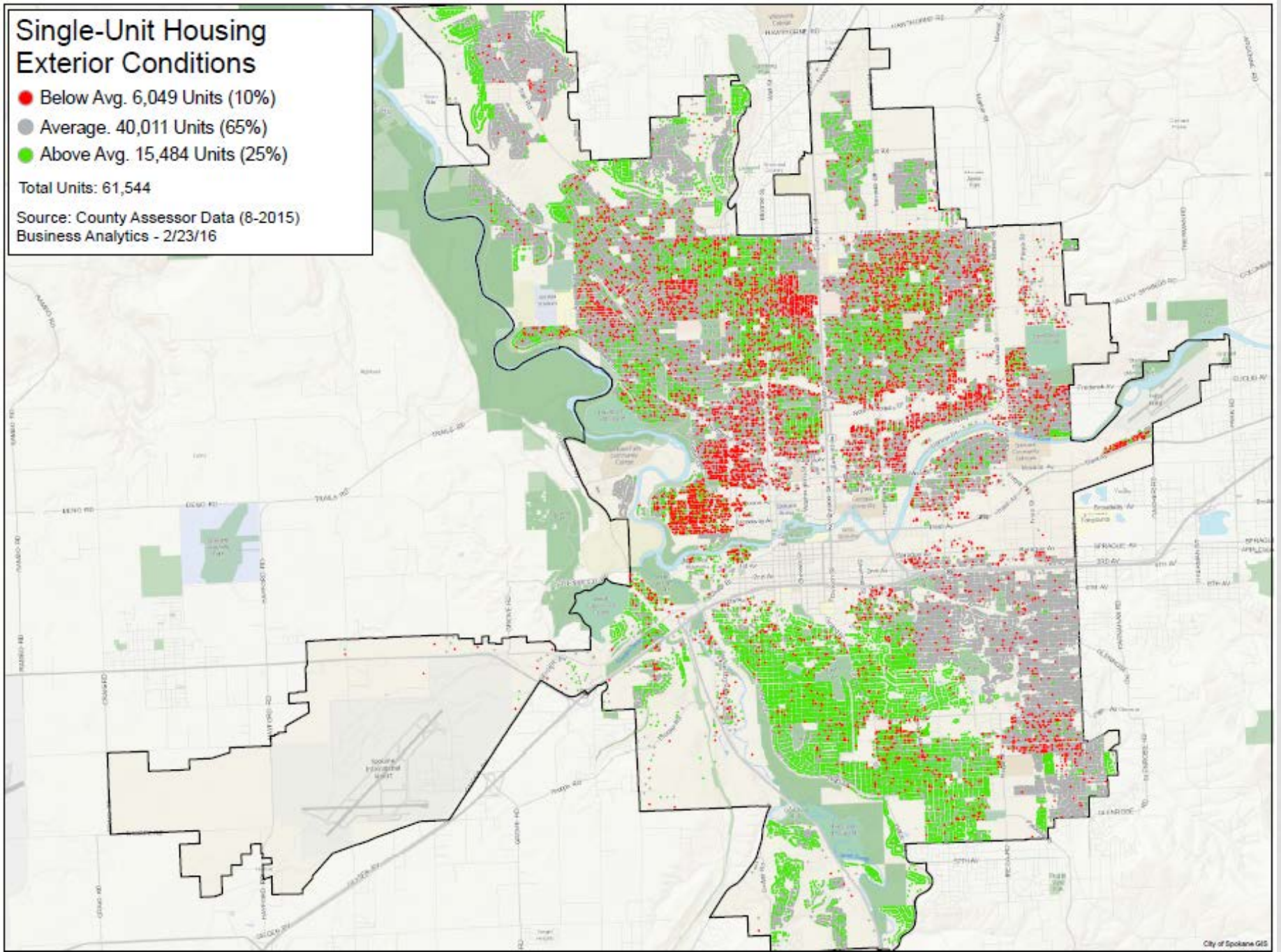
- **Exterior Condition** Exterior condition of structures is noted by assessors when they visit a property.
- **Limitations:** Data can be out of date by several years due to the inspection cycles.
 - For example, if a significant remodel were to improve the condition, it would presumably be noted when the remodel triggers a physical inspection by the assessors.
- **Rating Scale:** Curb-side exterior physical condition
 - Very Poor: undesirable, unoccupied
 - Poor: Un-attractive; excessive turnover
 - Average: Still somewhat attractive & desirable
 - Good: Quite attractive and desirable
 - Excellent: Extremely attractive & highly desirable

Single-Unit Housing Exterior Conditions

- Below Avg. 6,049 Units (10%)
- Average. 40,011 Units (65%)
- Above Avg. 15,484 Units (25%)

Total Units: 61,544

Source: County Assessor Data (8-2015)
Business Analytics - 2/23/16



HQT SCHEDULE

- May 2nd:
 - Substandard Properties
 - Homes in Foreclosures
 - Abandoned Homes
- May 18th:
 - Chronic Nuisance Properties
 - Vacant Residential Lots
 - Housing Affordability