

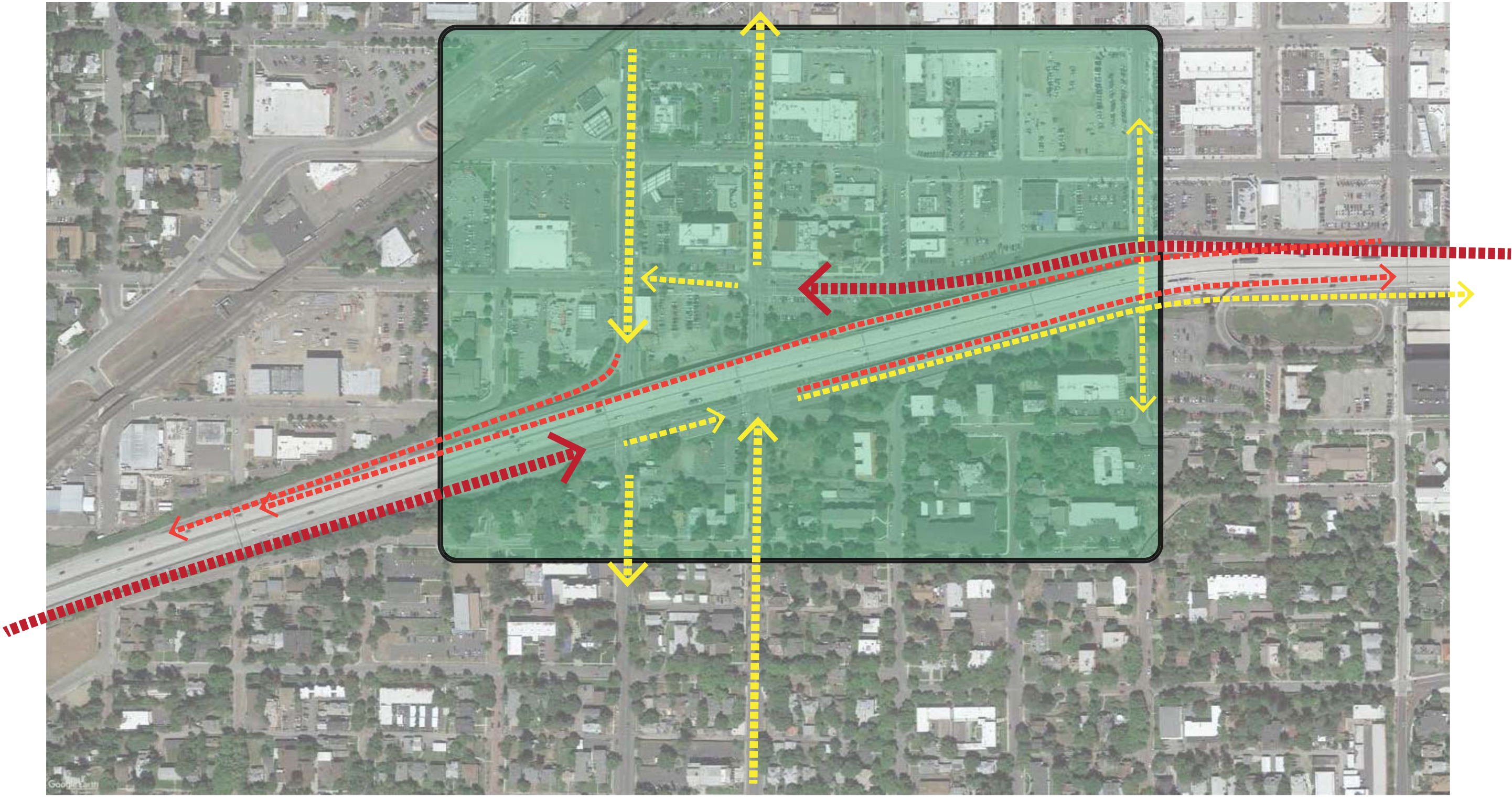
agenda

1. what we heard
2. universal design elements
3. design option A - Weave
4. design option B - Flow
5. priorities and goals

Maple Jefferson Stakeholder Meeting #3

4.3.2018

Experience







Philadelphia



Sydney



Chicago



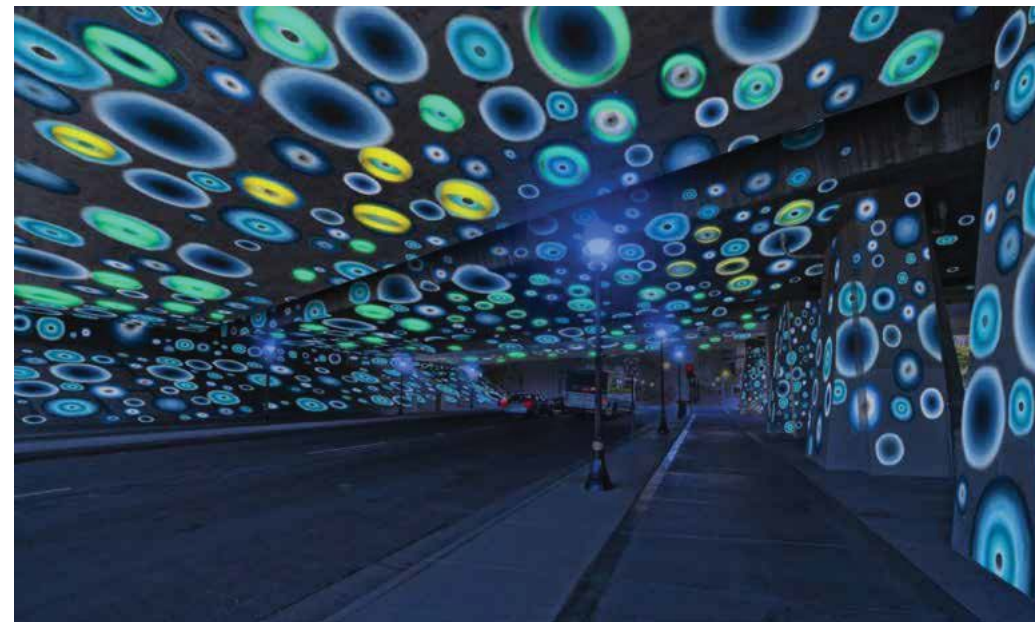
San Antonio



Seattle



London



San Jose

Maple to Lincoln

MAPLE
City Exit/
Entrance

WALNUT
City Exit/
Entrance

Cedar

Adams

JEFFERSON
City Exit



I-90 Exit/Entrance Ramps Gateways to Downtown Spokane

Architectural Master Plan
December 2013

Revised:
October 2016
August 2017





Standard Aesthetic Barrier and planter on Division. Texture and surface stain.



Recently installed basalt wall at Kendall Yards.

Color Palette

Stain colors have been selected to accent and enhance existing brick, stone and concrete. In the future, it may be desirable to add complementary colors and/or designate a color for the underside of the freeway deck.



Spokane is brick, basalt, granite. Big pines.



SPOKANE COUNTY, WA
WAYFINDING & GATEWAY FEATURE PLACEMENT
& DESIGN PLAN

VOLUME 1 - WAYFINDING ANALYSIS

FEBRUARY 18, 2016

Client : Downtown Spokane Partnership and Spokane County



merje

MERJE | ENVIRONMENTS & EXPERIENCES

120 North Church Street

Suite 208

West Chester, PA 19380

T 484.266.0648

www.merjedesign.com



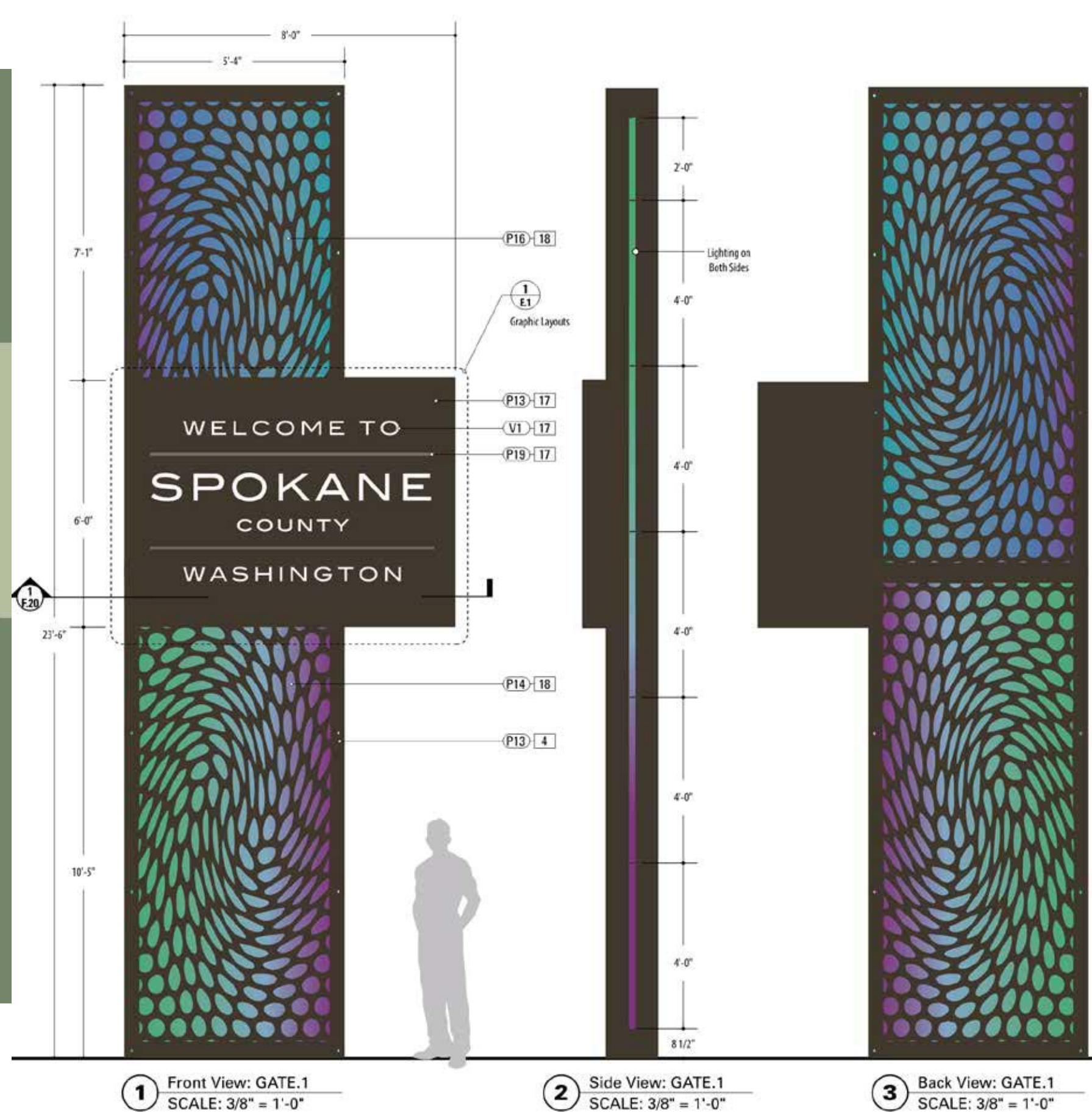
STANTEC

621 West Mallon Avenue, Suite 309

Spokane, Washington 99201

T 509.326.5139

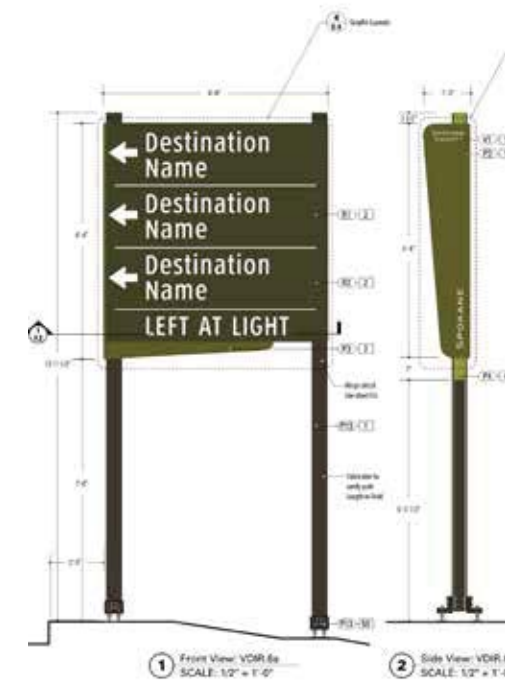
www.stantec.com



1 Front View: GATE.1
SCALE: 3/8" = 1'-0"

2 Side View: GATE.1
SCALE: 3/8" = 1'-0"

3 Back View: GATE.1
SCALE: 3/8" = 1'-0"



1 Front View: VDR 6a
SCALE: 1/2" = 1'-0"

2 Side View: VDR
SCALE: 1/2" = 1'-0"

SCHEMATIC DESIGN 1



13'-6" REGIONAL

SPOKANE - DISTRICTS

ALTERNATE DISTRICT SHAPE

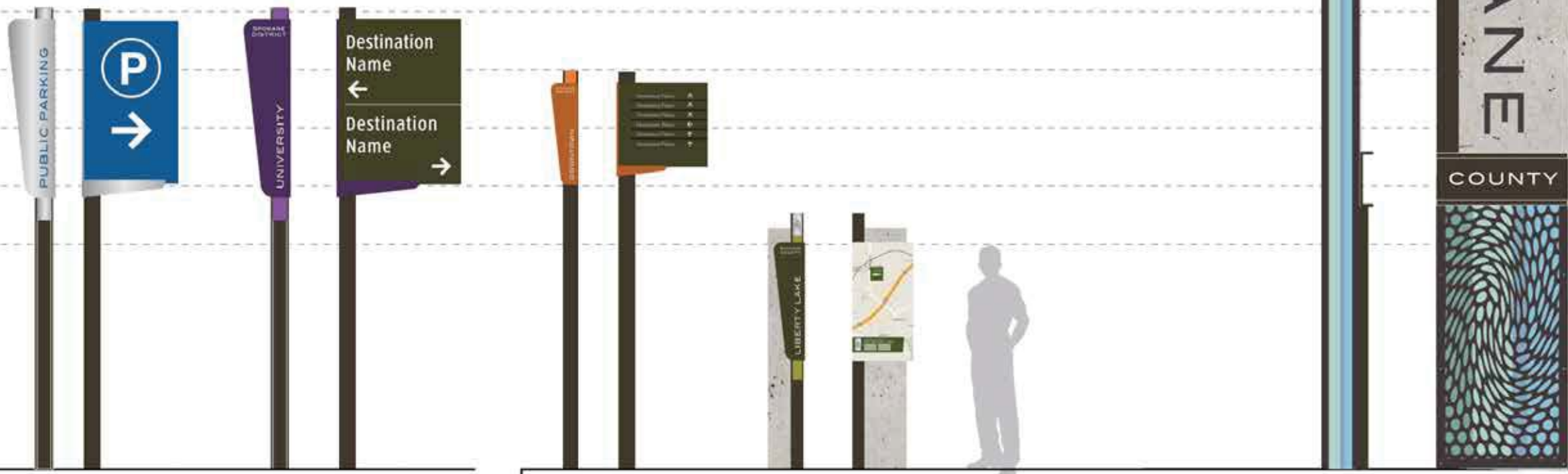
12'-0"

10'-6"

9'-0"

7'-6"

6'-0"



SIDE

PARK.1
Parking Lot Trailblazer
(SS Strap-mounted)

SIDE

VDIR.2
Vehicular Directional
(4" Message - 25MPH or Less)

SIDE

PED.1
Pedestrian Directional

SIDE

KIOSK.1
Pedestrian Kiosk

SIDE

COUNTY GATE.1
County Gateway Large

SCALE: 3/4" = 1'-0"



merJe

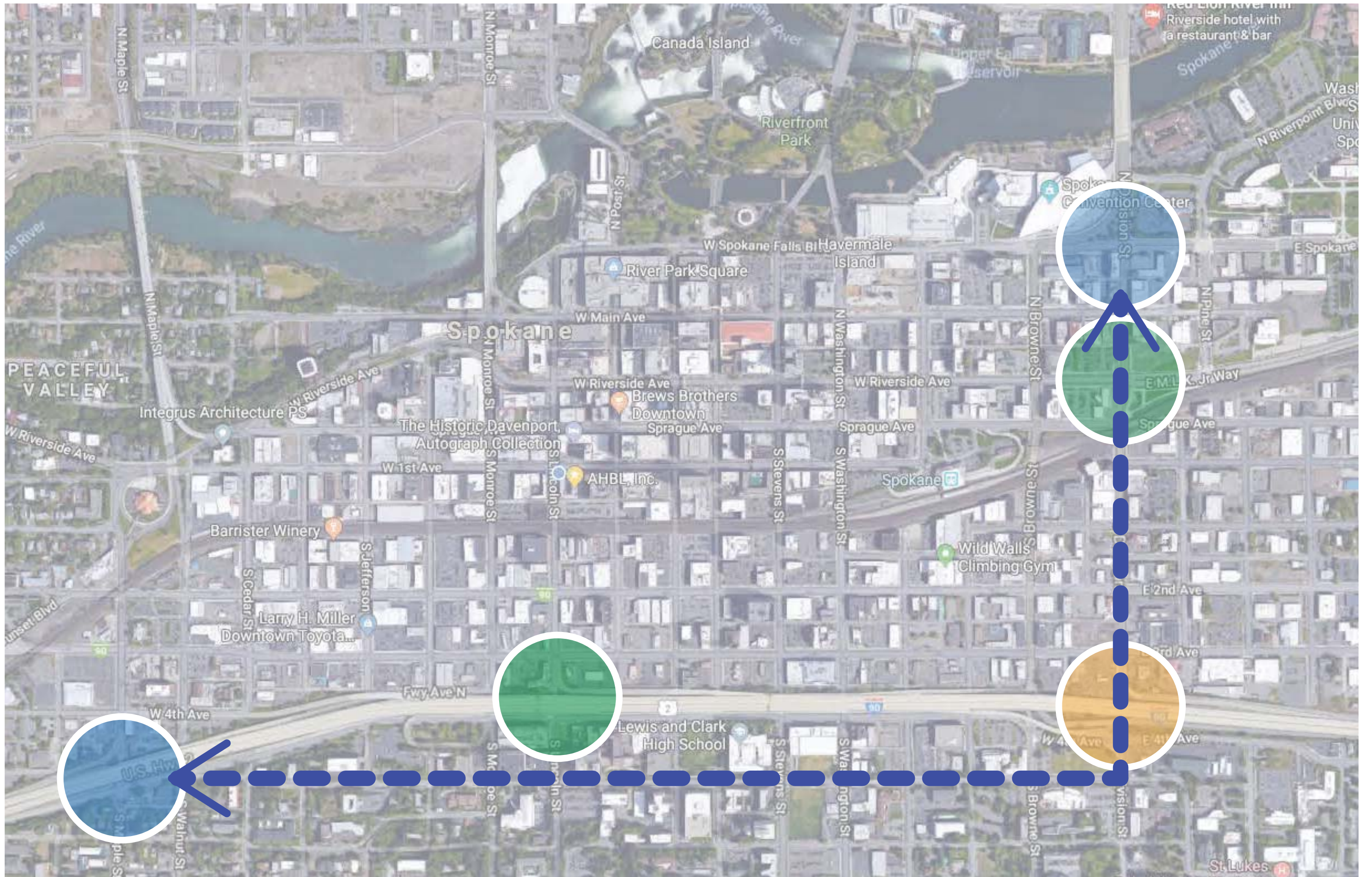






did we miss anything?

universal design elements

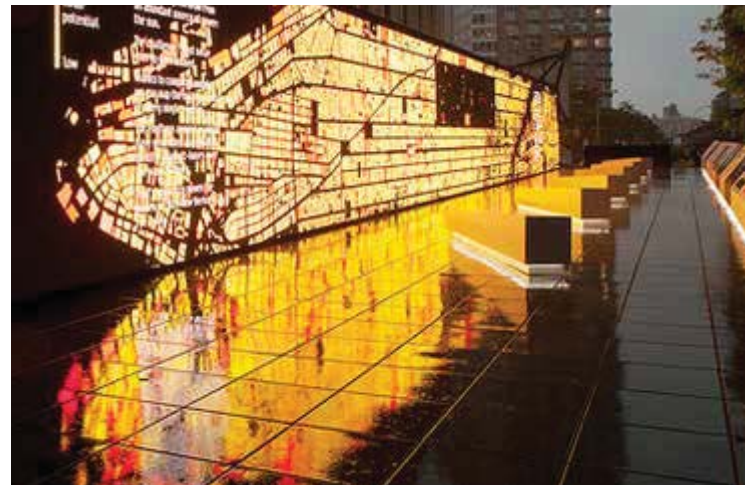




lighting



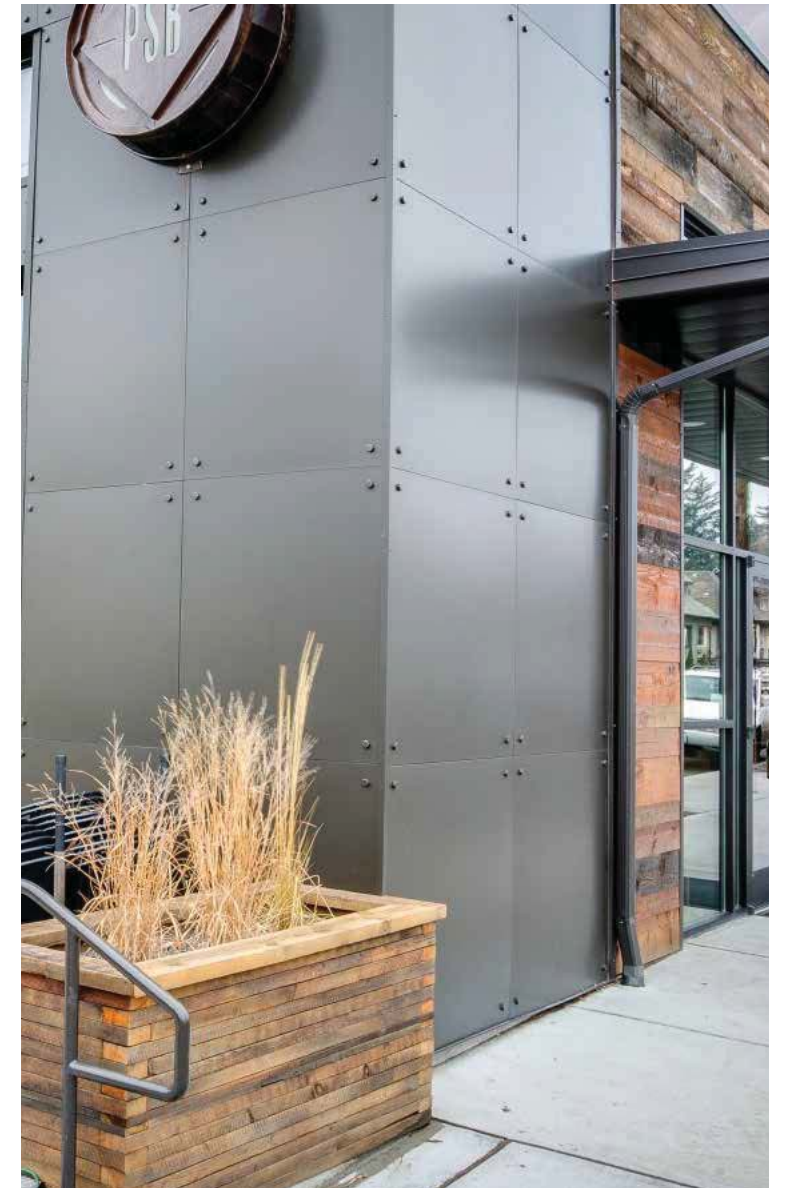
digital media



flexible artwork



timeless materials

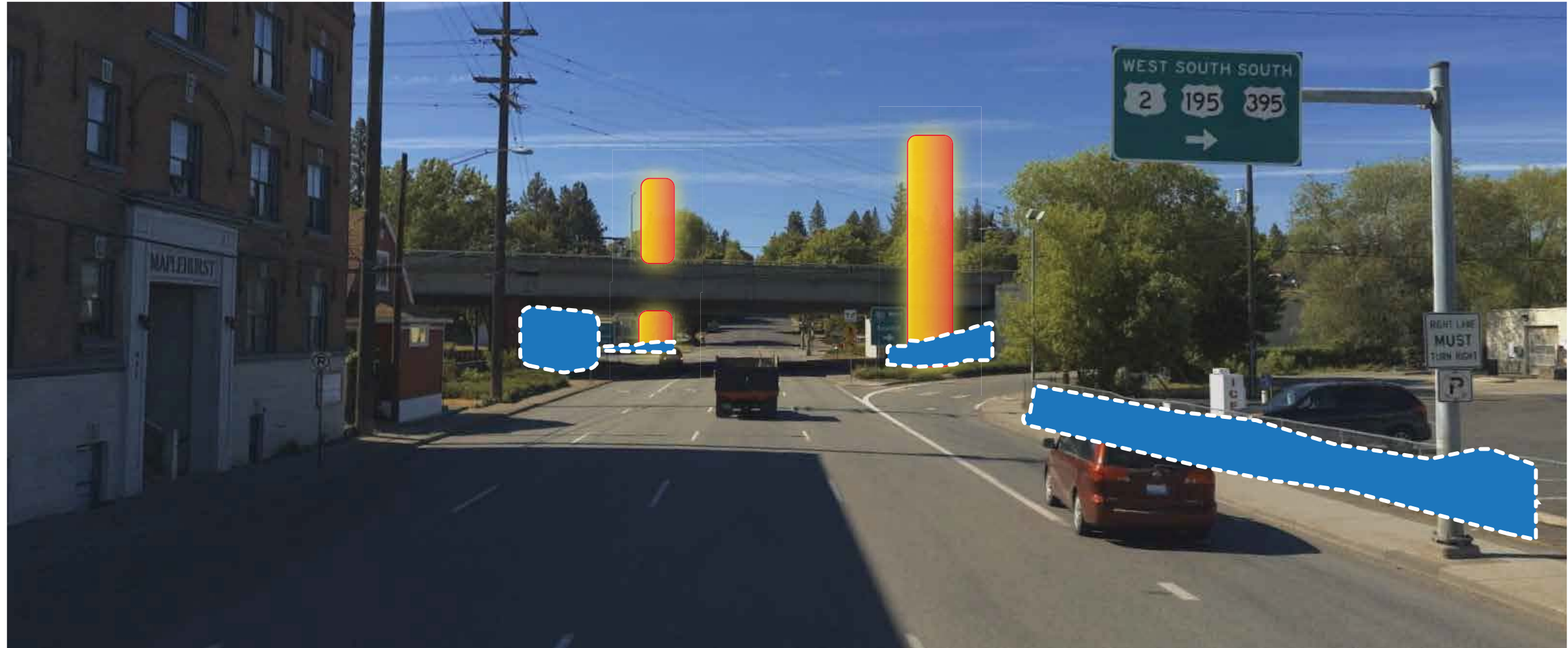


design character

	Universal characteristics	Opt A. (built environment)	Opt. B (natural environment)
I-90 experience	<ul style="list-style-type: none">- welcoming- improved wayfinding- improved lighting	<ul style="list-style-type: none">- city skyline- iconic entry	<ul style="list-style-type: none">- valley and mountains horizon- landforms
local experience	<ul style="list-style-type: none">- going home / to work / to play- access to services and business- access to parking- improved lighting	<ul style="list-style-type: none">- block level character- landmark buildings- streetscape	<ul style="list-style-type: none">- river and gorge- parks and open spaces
pedestrian experience	<ul style="list-style-type: none">- safe- inviting- improved lighting- active and exciting spaces	<ul style="list-style-type: none">- streetscapes and boulevards- homeless' services and safety	<ul style="list-style-type: none">- natural materials and forms- activating scent- natural sounds- deterrants to homeless / panhandlers





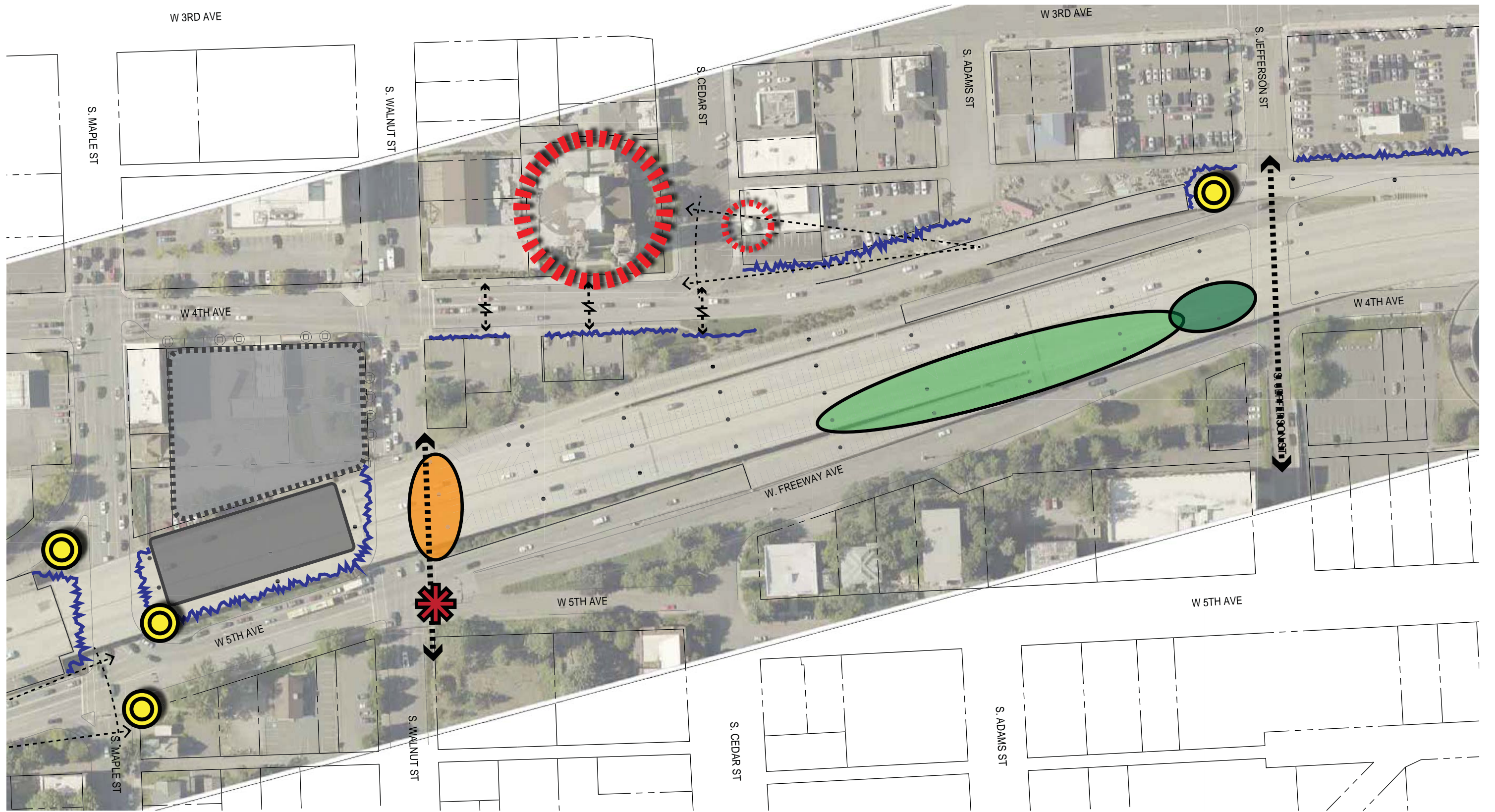


WEST SOUTH SOUTH
2 195 395
→

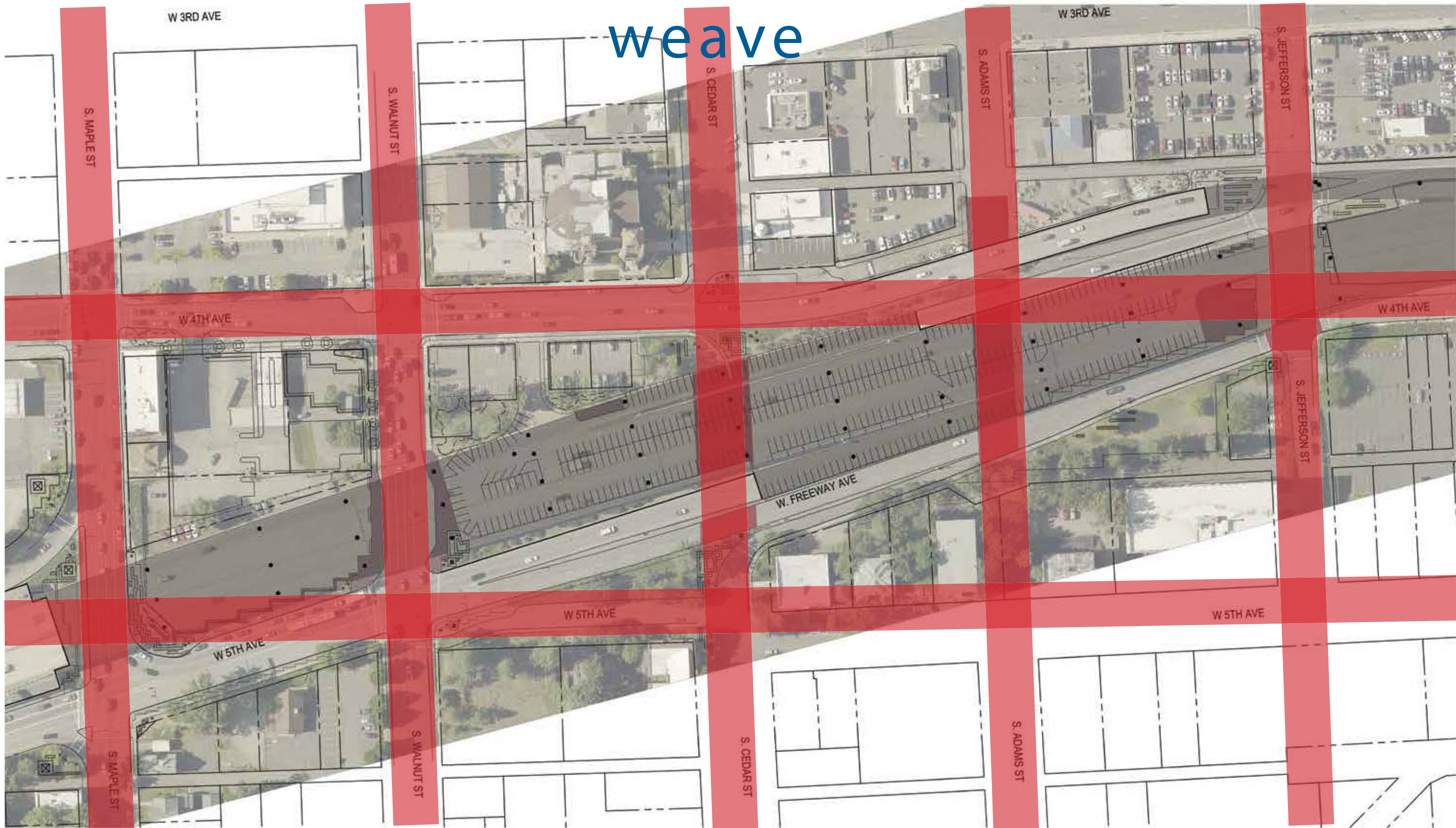
RIGHT LANE
MUST
TURN RIGHT
P







weave

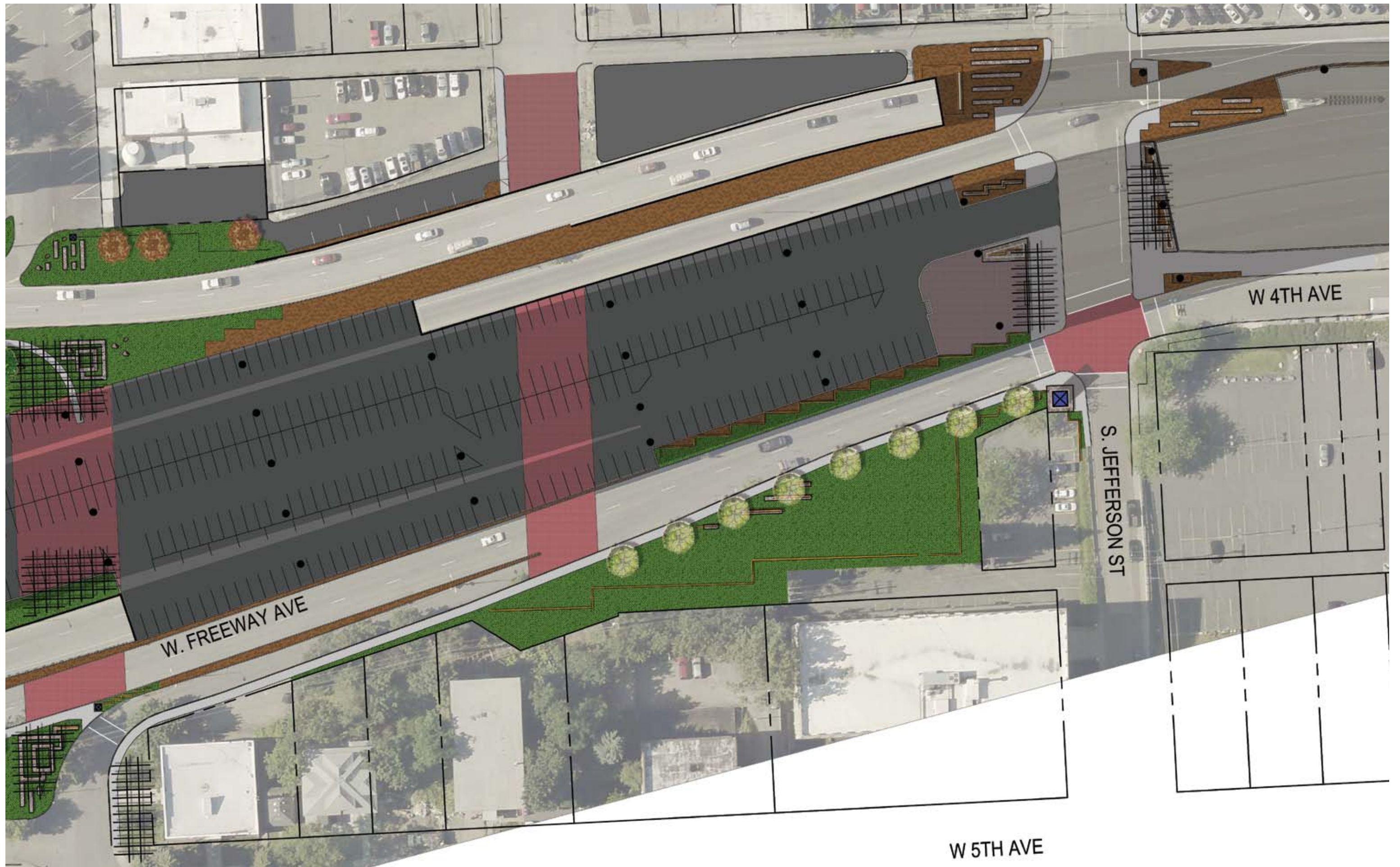






MAPLE TO JEFFERSON GATEWAY - WEAVE



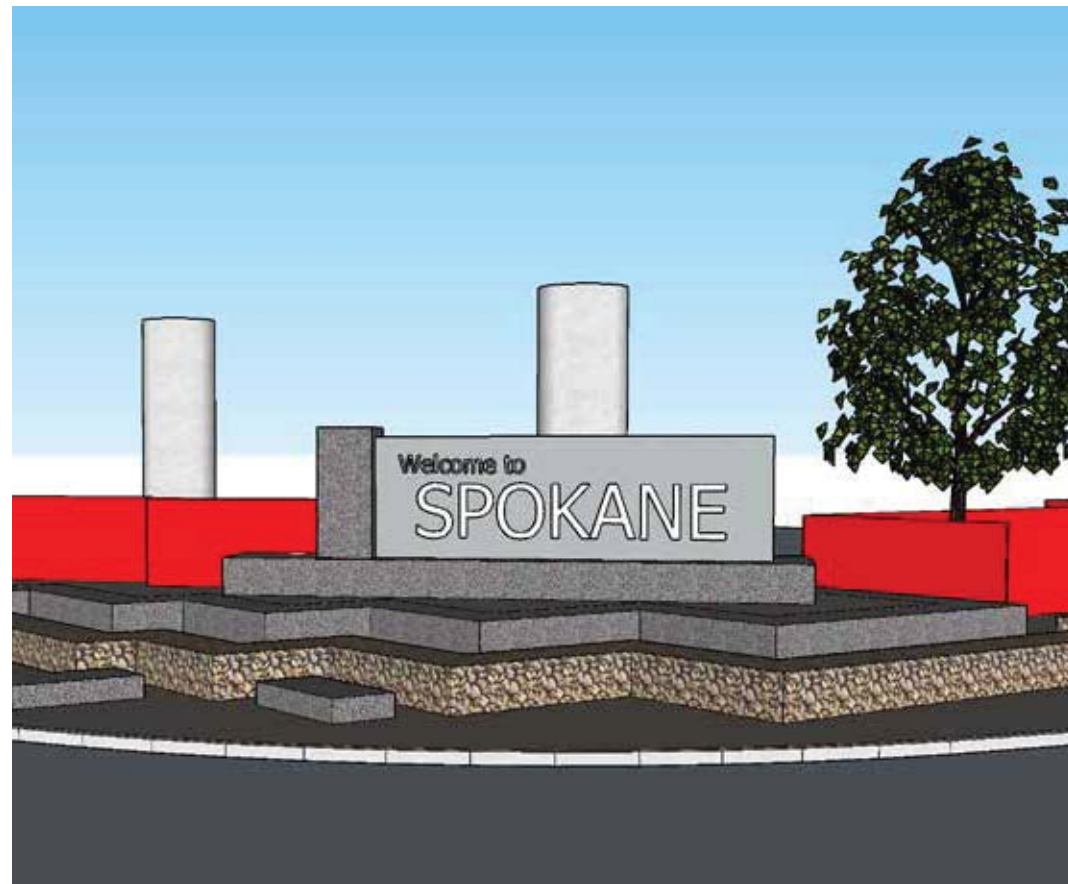
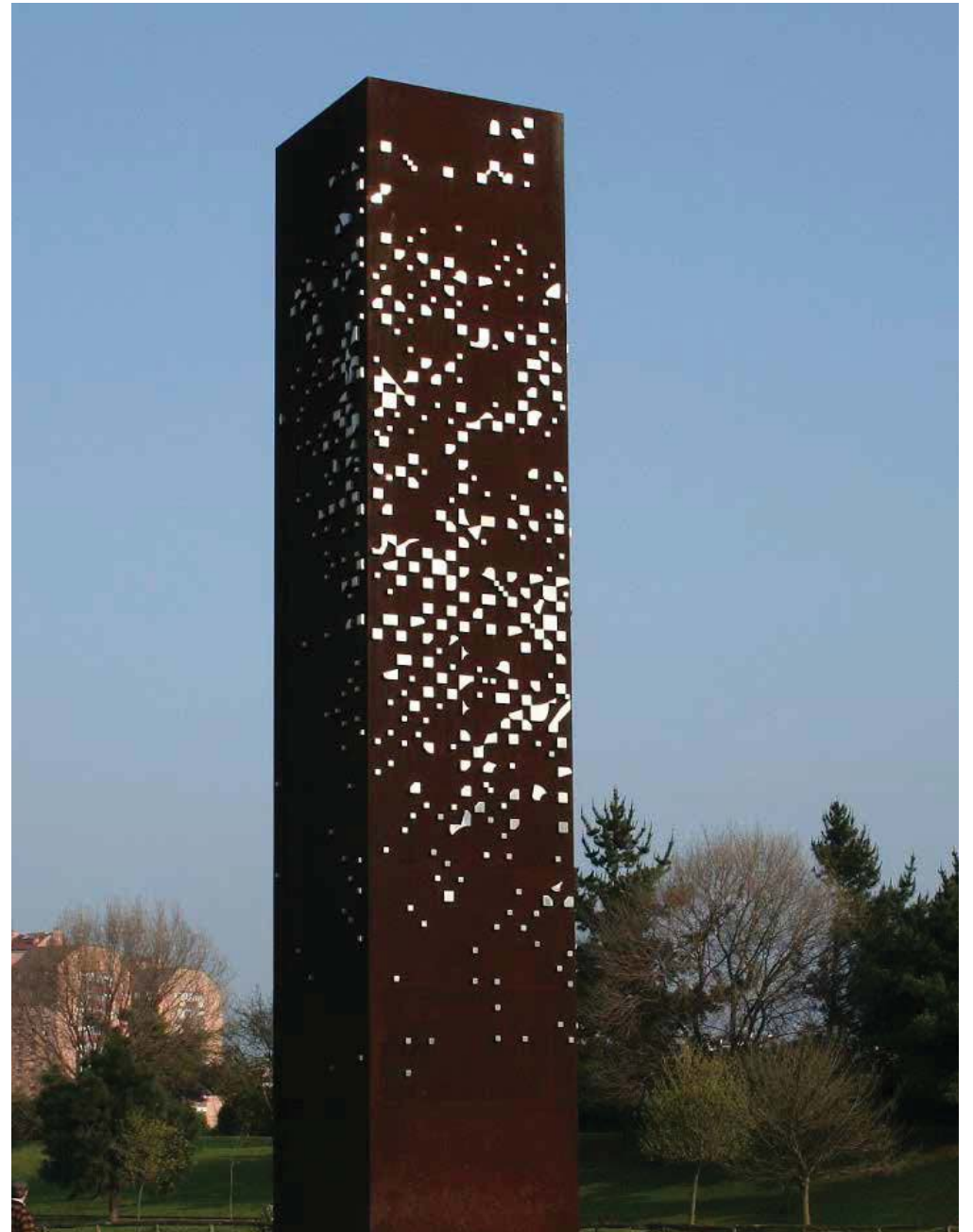


W. FREEWAY AVE

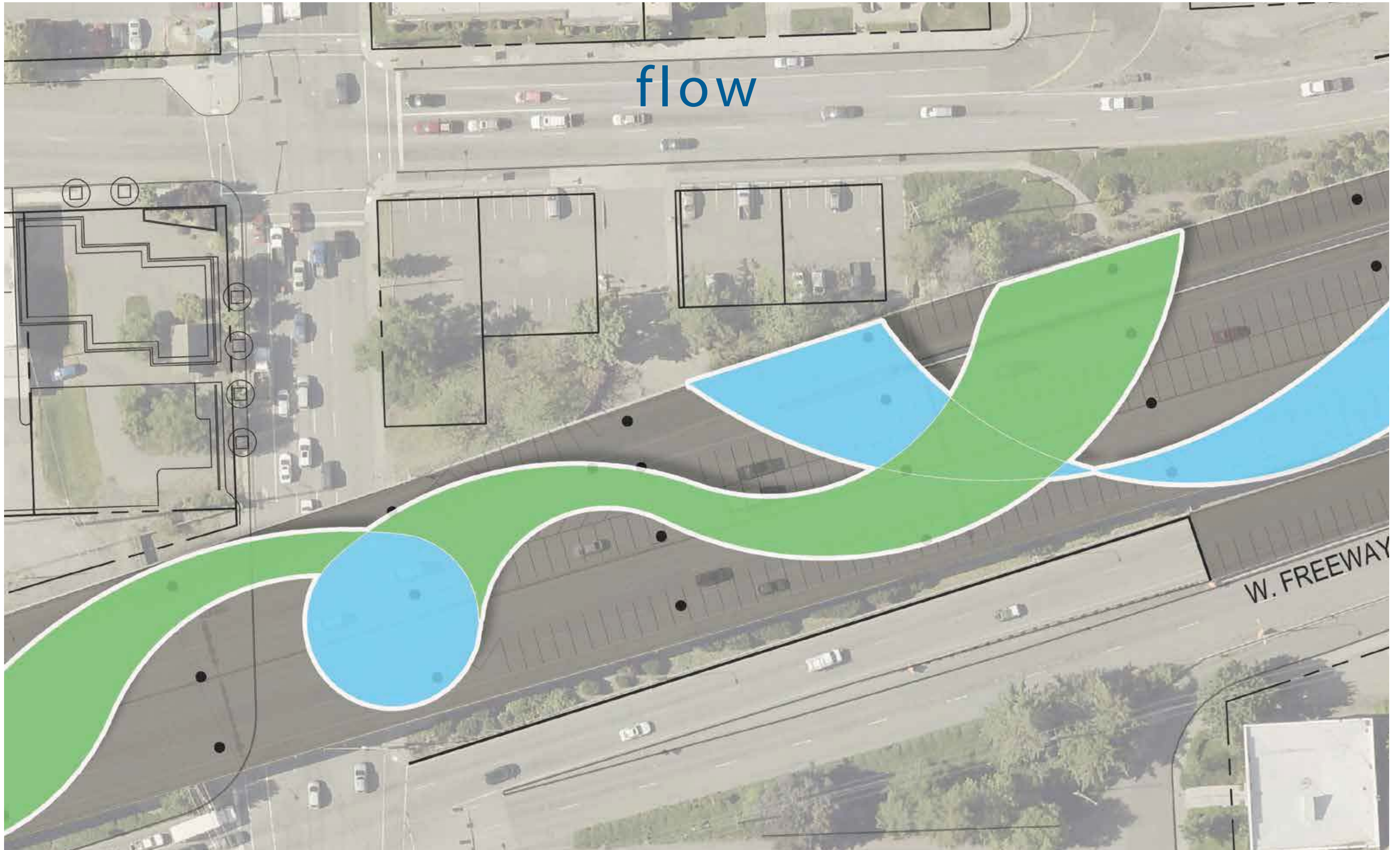
W 4TH AVE

S. JEFFERSON ST

W 5TH AVE



flow







MAPLE TO JEFFERSON GATEWAY - FLOW

W 4TH AVE

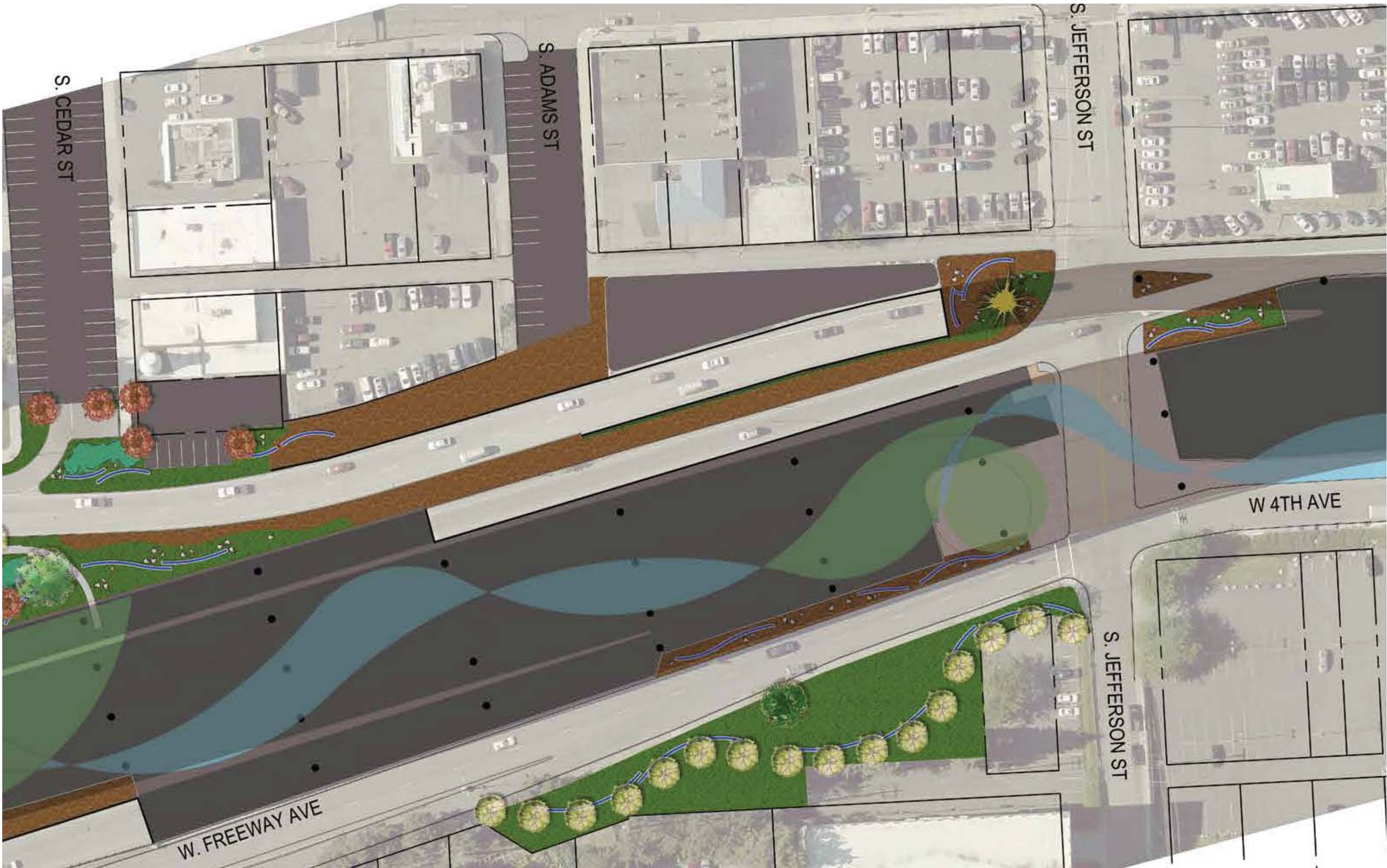
W 5TH AVE

W 5TH AVE

S. MAP

S. WALNUT





S. CEDAR ST

S. ADAMS ST

S. JEFFERSON ST

W 4TH AVE

W. FREEWAY AVE

S. JEFFERSON ST



priorities and goals exercise

next steps