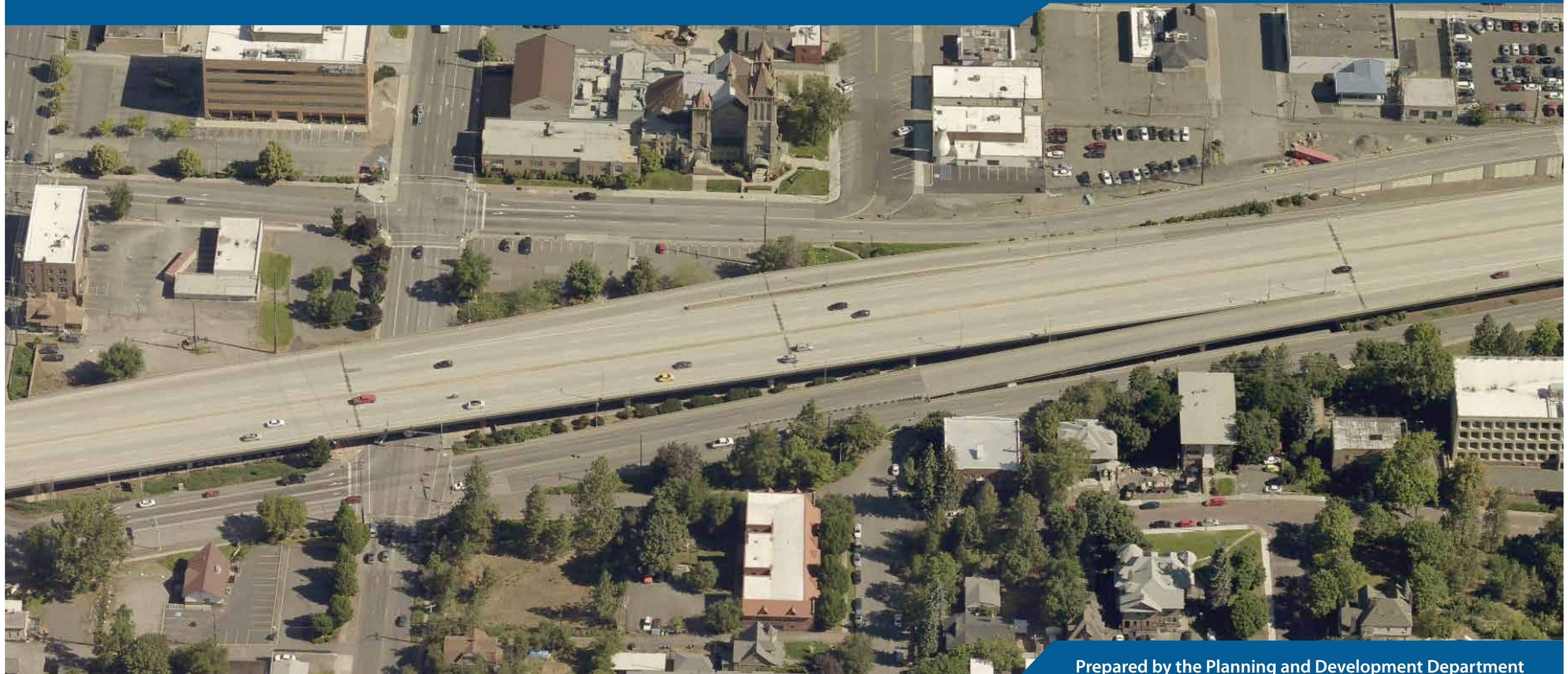




MAPLE STREET TO JEFFERSON STREET GATEWAYS MASTER PLAN

Stakeholder Meeting #2

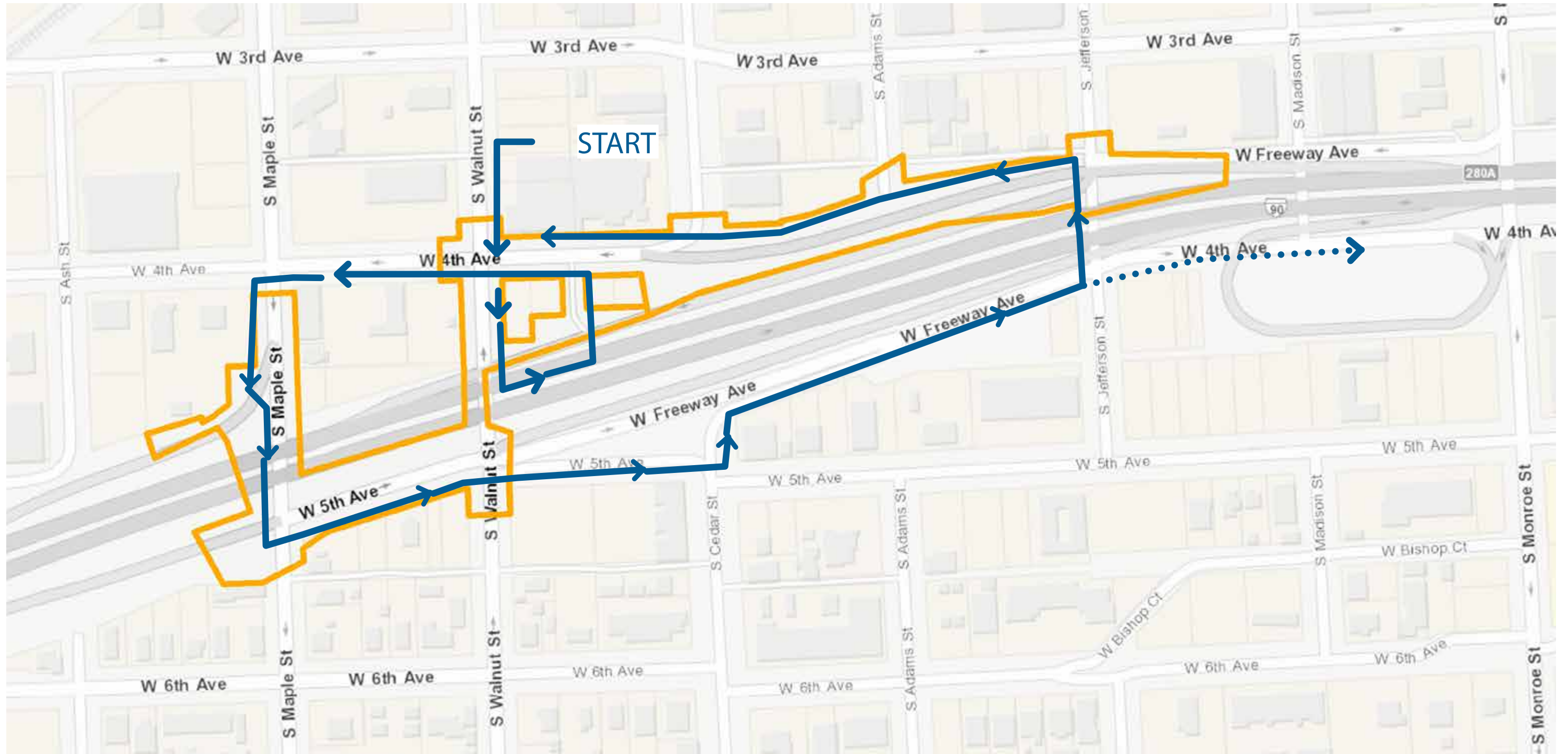
March 6, 2018



Prepared by the Planning and Development Department

STEERING COMMITTEE MEETING #2

Site Tour Map



Map Key



SITE BOUNDARY



DOUBLE BACK TOUR ROUTE



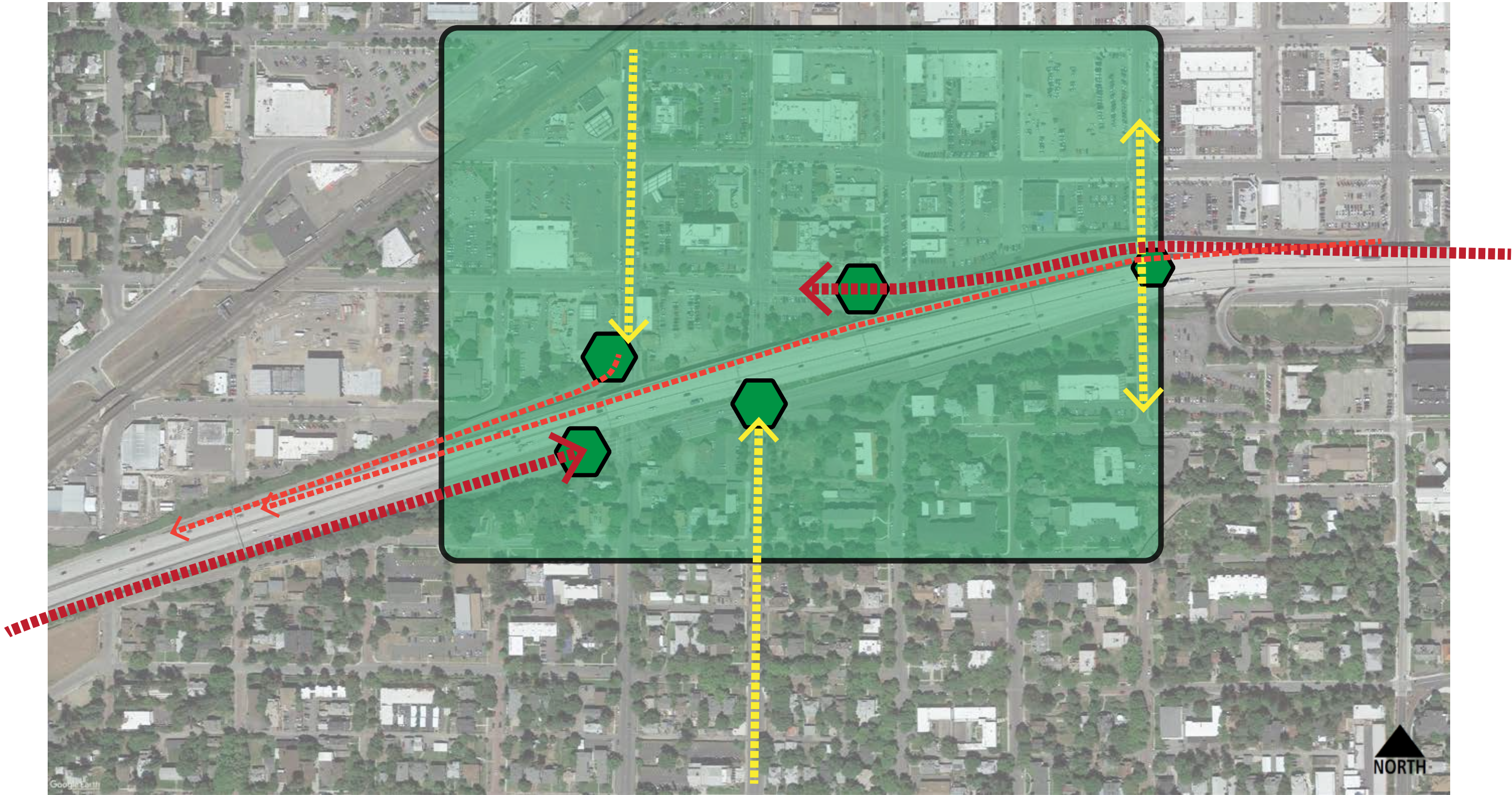
TOUR ROUTE



Freeway Experience

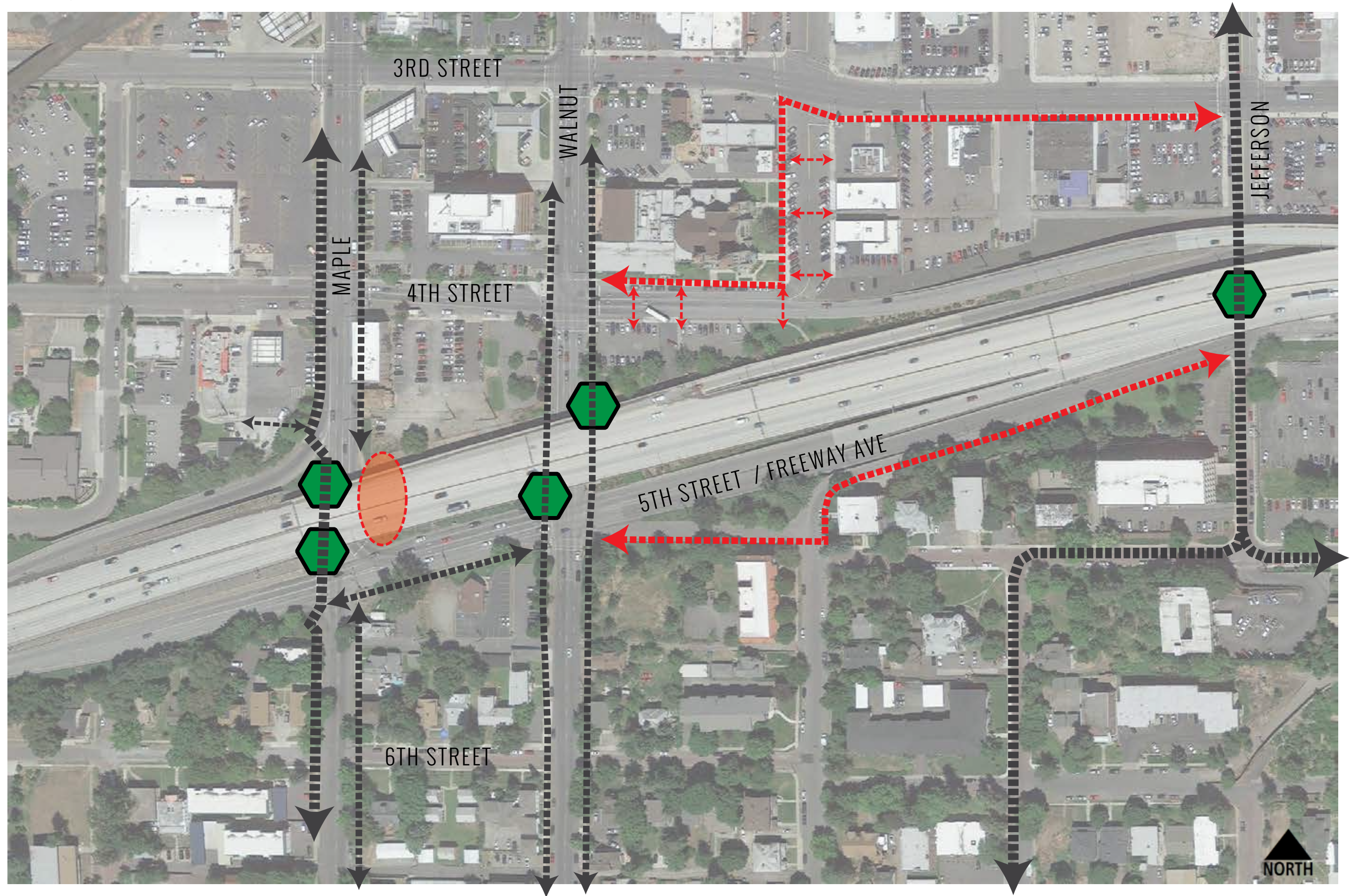


Local Vehicular Experience





Pedestrian Experience



Signage Gateways

LIBERTY LAKE



MEDICAL LAKE

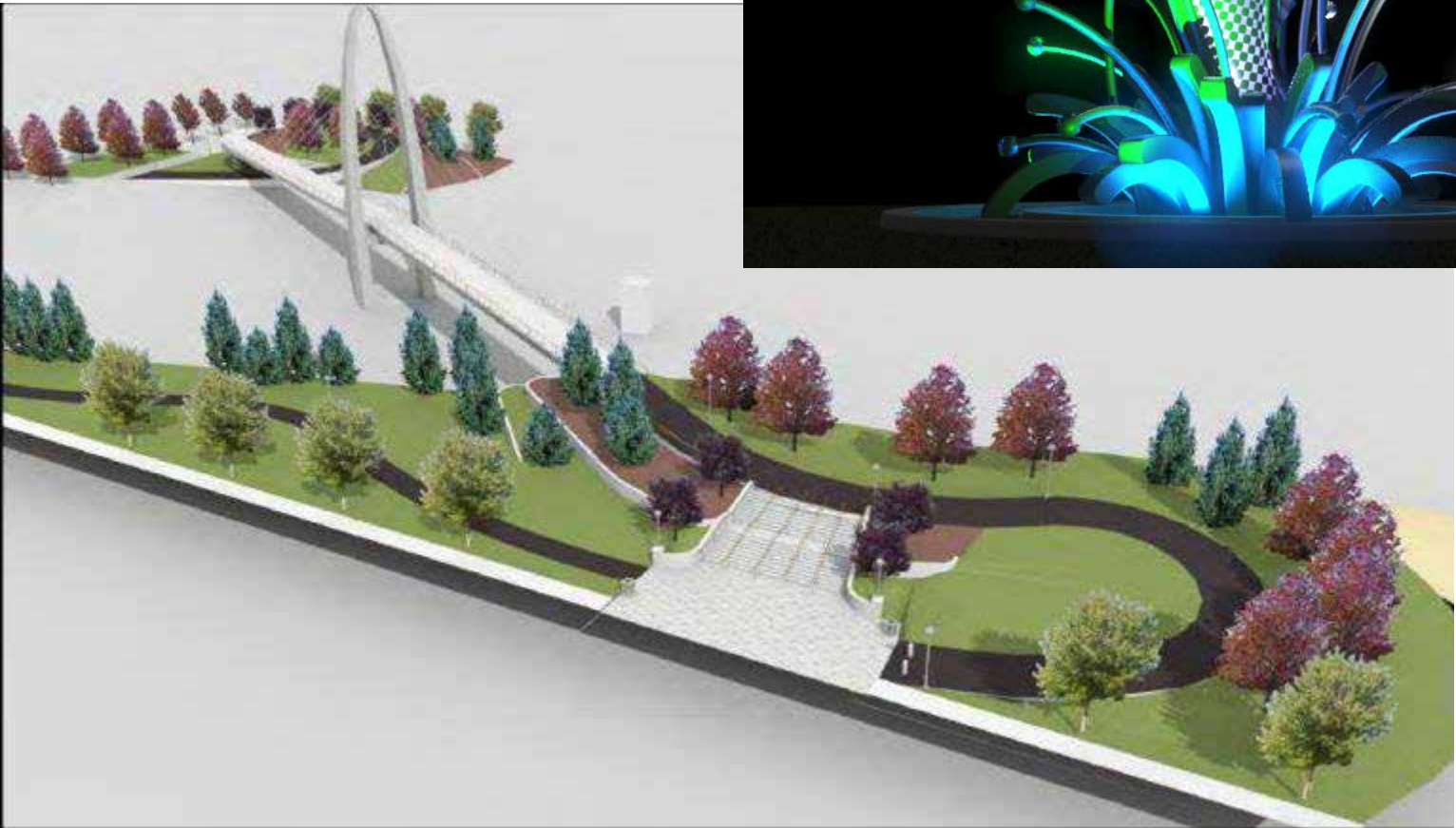


SPOKANE

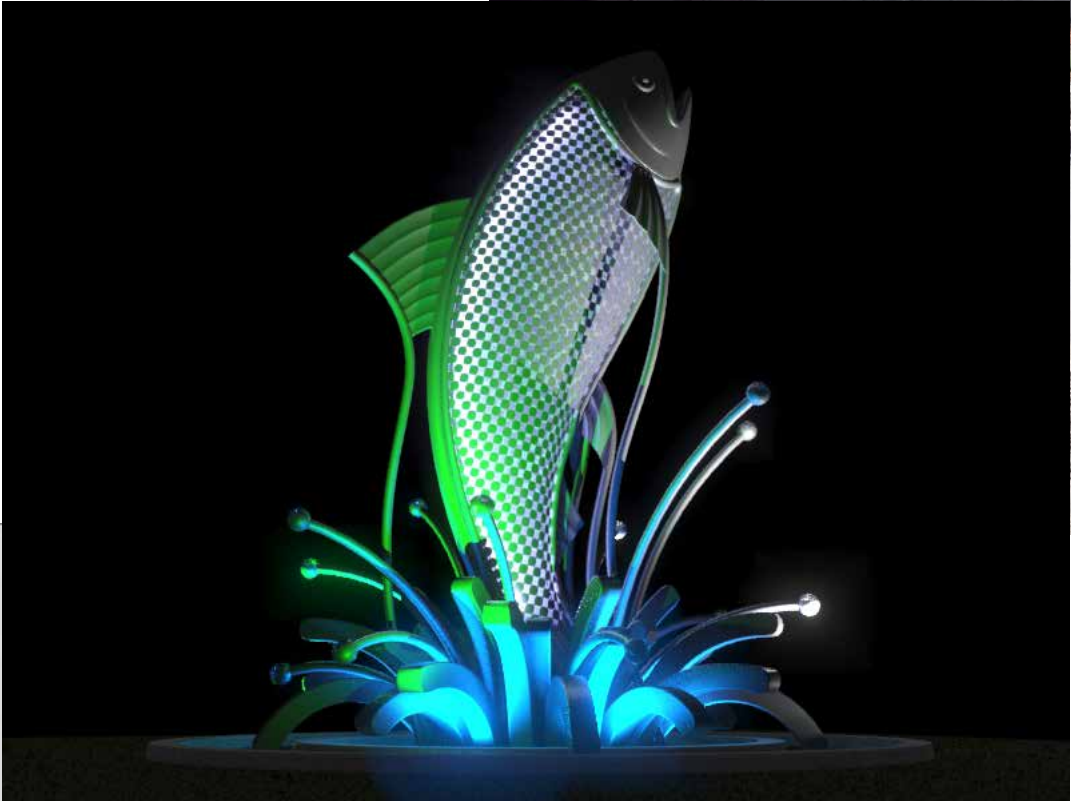


SPOKANE VALLEY





Experience Gateways



Wayfinding Guidelines

SPOKANE COUNTY, WA
WAYFINDING & GATEWAY FEATURE PLACEMENT
& DESIGN PLAN

VOLUME 1 - WAYFINDING ANALYSIS

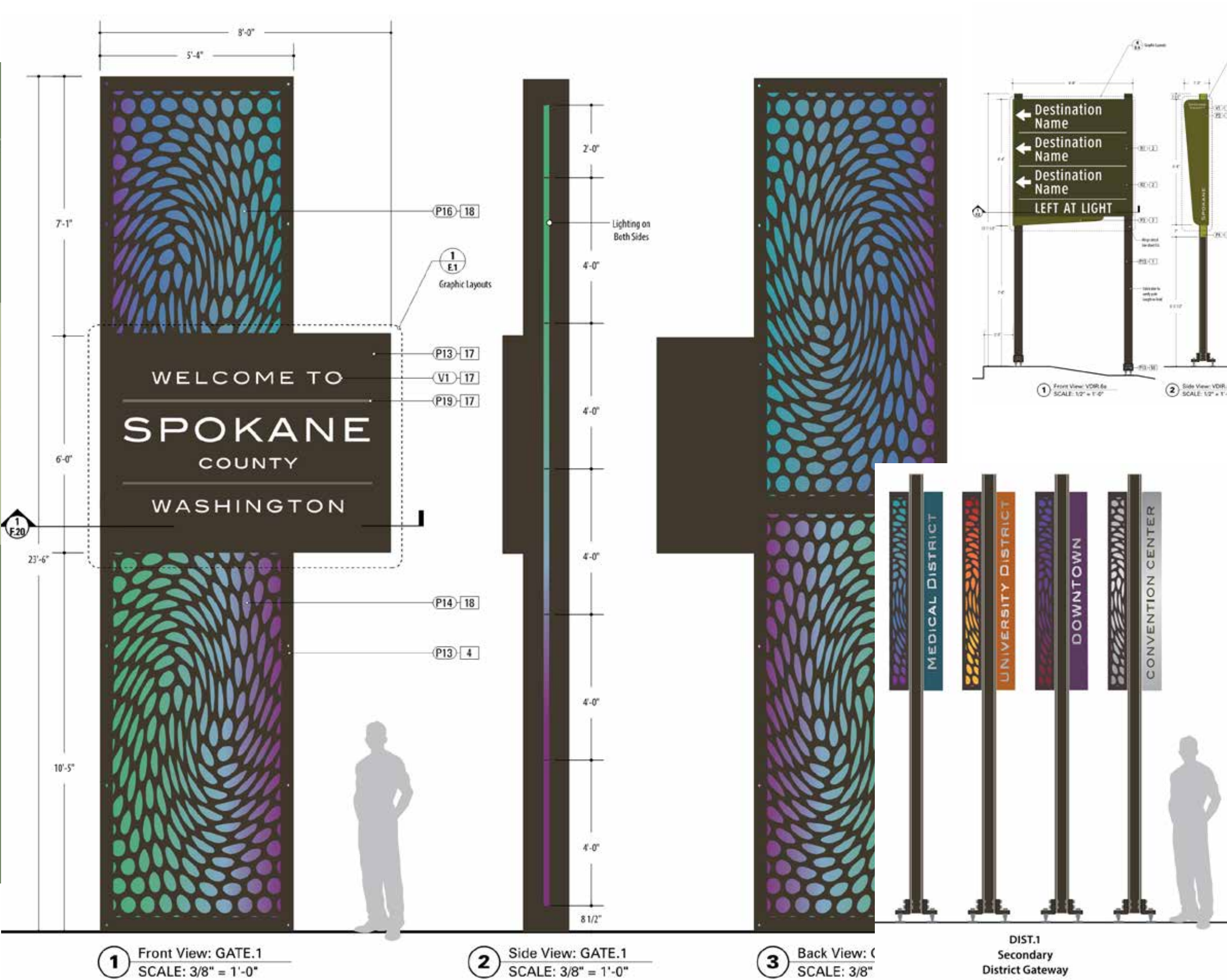
FEBRUARY 18, 2016
Client : Downtown Spokane Partnership and Spokane County



merJe

MERJE | ENVIRONMENTS & EXPERIENCES
120 North Church Street
Suite 208
West Chester, PA 19380
T 484.266.0648
www.merjedesign.com

STANTEC
621 West Mallon Avenue, Suite 309
Spokane, Washington 99201
T 509.326.5139
www.stantec.com



Maple to Lincoln


MAPLE
City Exit/
Entrance

WALNUT
City Exit/
Entrance

Cedar

Adams

JEFFERSON
City Exit




I-90 Exit/Entrance Ramps

Gateways to Downtown Spokane

Architectural Master Plan
December 2013

Revised:
October 2016
August 2017





“ Themes ” or Stories to Tell

Spokane is *a community thoroughly engaged with a wild and scenic river.*

The theme for the Division entrance is the Spokane River. Art, landscape and accent features in the public right of way will help tell the story of the city’s relationship to the Spokane River. Adjacent businesses and property owners are encouraged to consider following through on this theme.



Theme Options

Rivers and Gorges

- | | |
|---------------|-----------------------|
| Spokane River | Latah Creek |
| Water | Forests |
| Basalt | Haystacks and Columns |
| Steep Slopes | Flat River Channels |

A Place Near Nature

- | | | |
|---------|--------------|--------------------------|
| Palouse | Pine Forests | Westslope of the Rockies |
| Rivers | Access | |

A Confluence of People

- | | |
|------------|-----------|
| Tribes | Pioneers |
| Miners | Railroads |
| Power | Industry |
| Family | Friendly |
| Homecoming | |

Driver's Visual Experience



10-15 mph



20-25 mph



30-35 mph



40 mph and greater

Adapted from the NACTO Urban Street Design Guide

<https://nacto.org/publication/urban-street-design-guide/design-controls/design-speed/>

Distinct Themes

Ideation

