

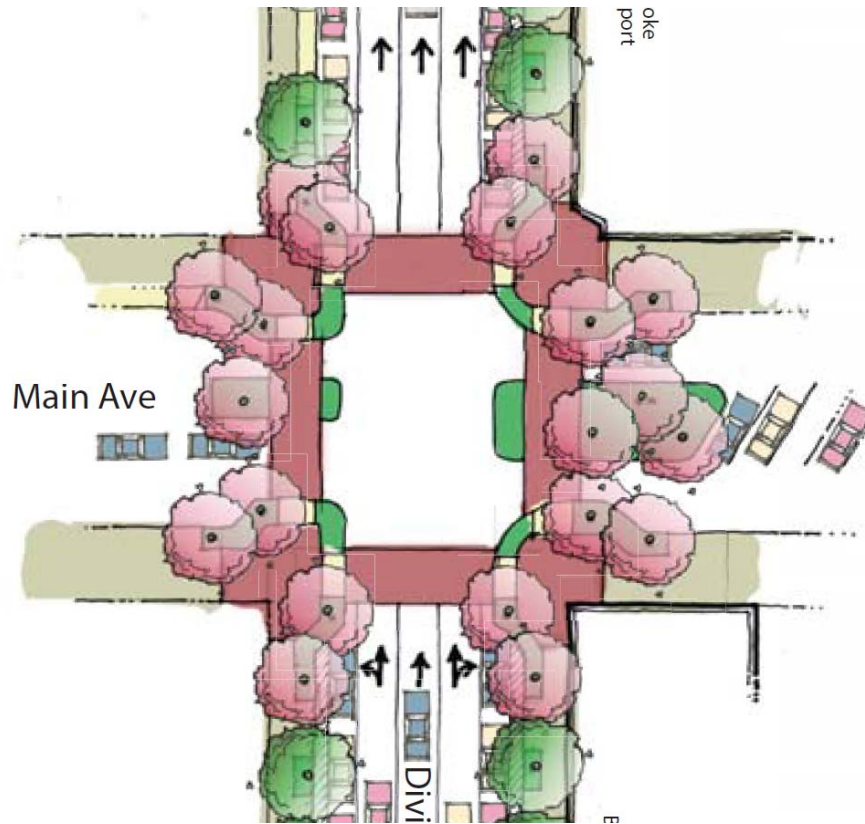
# Main Avenue Pilot

## **AGENDA – Oct. 13, 2015**

- Project Recap
  - Overview of Current Design
  - Cover comments received
- Parking System Change Overview
- On-street vehicle movement options
- Streetscape, Landscaping and Lighting options
- Loading zones and Deliveries

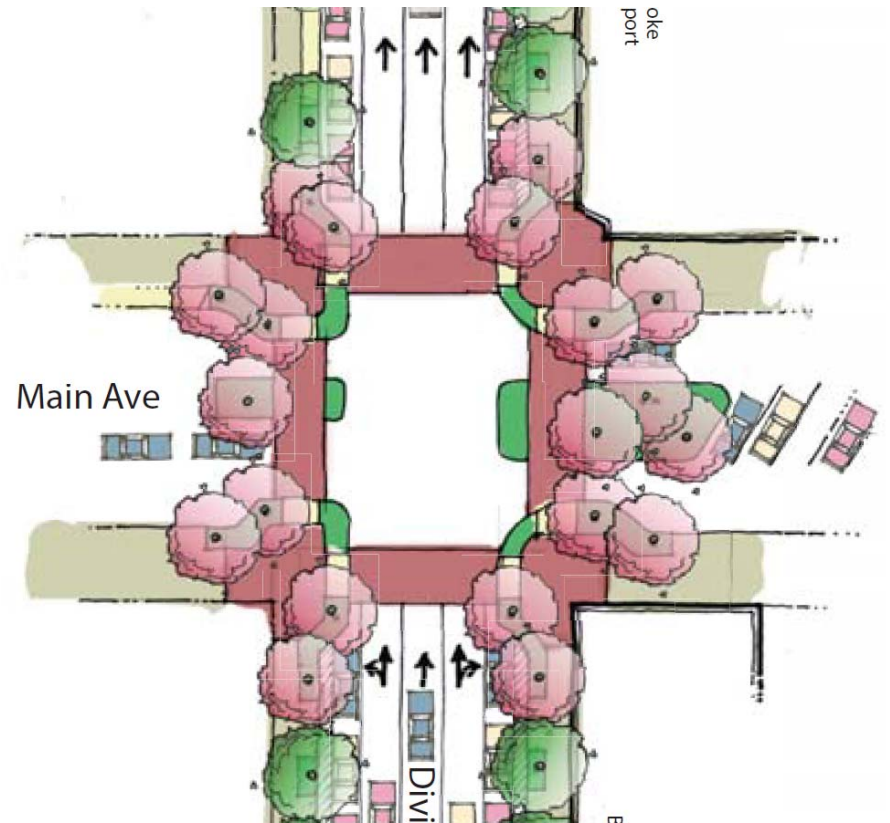
# Main Avenue Parking *Concept*

Concept came from  
Gateway Study  
Process from  
2012 - 2013



# Division Street Gateway Project Implementation

- Main and Division intersection bulb-outs
- Division Street – Repaving and Restriping 2017



# Division Street Gateway Study showed desire for Main Ave to be Multi-function

- Improve Streetscape
- Strengthen east-west connectivity
- Enhance visual image
- Improve safety for all modes
- Add Parking - Bicycle, Pedestrian, and Auto

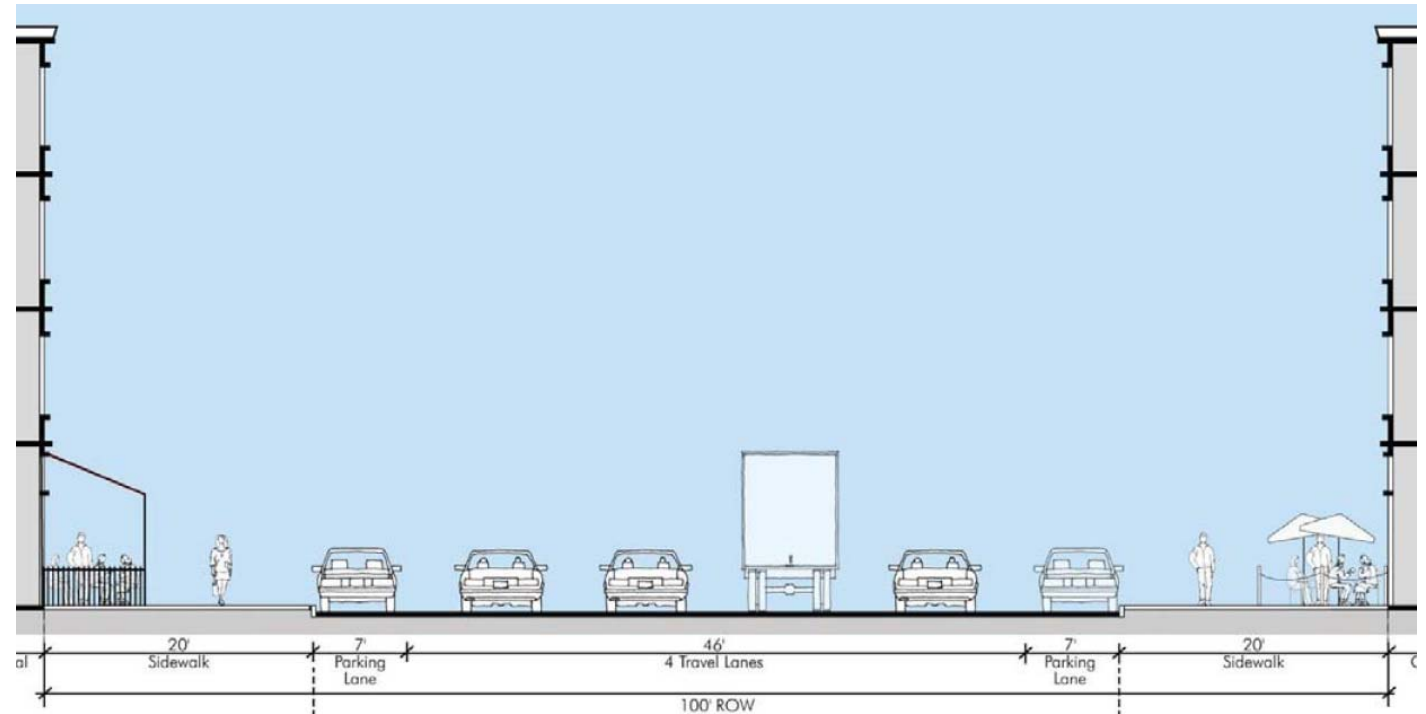




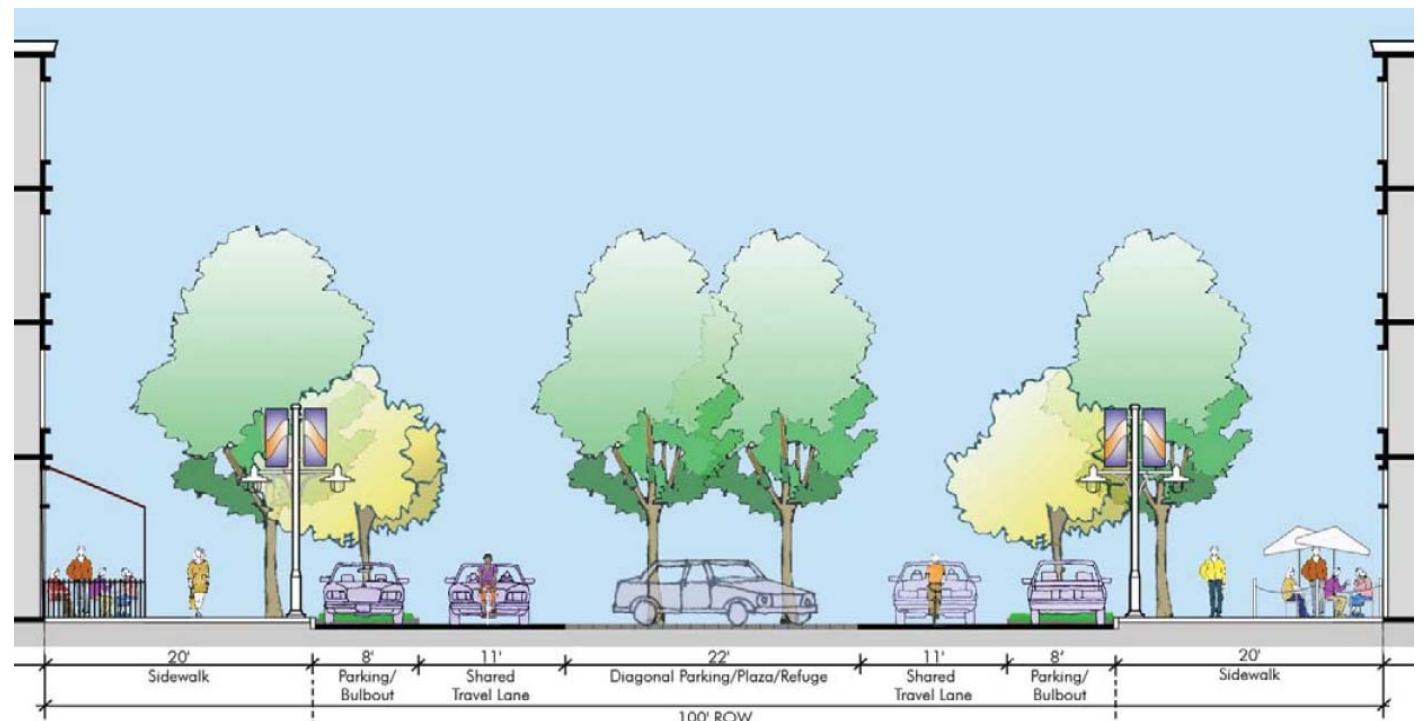
# Center Additional Parking Concept from 2013



Main  
Today



Original  
2-Way  
Concept





Main  
Today



Original  
2-Way  
Concept





“Ramblas”  
Convertible  
Festivals  
“Place to  
Be Seen”





# Current Pilot Project Scope

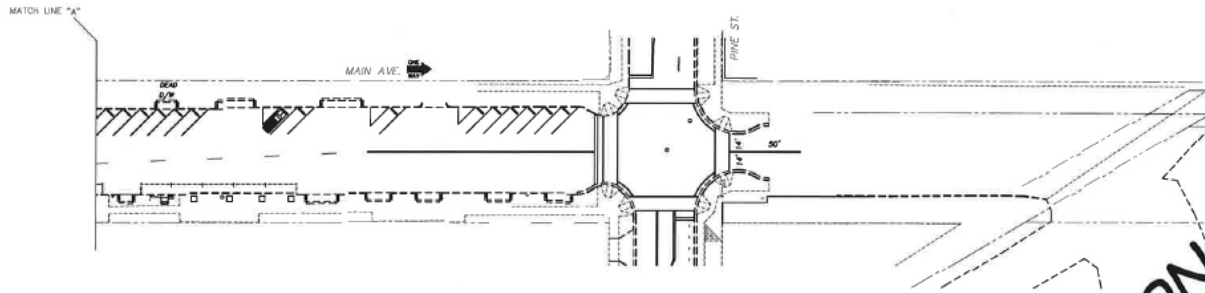
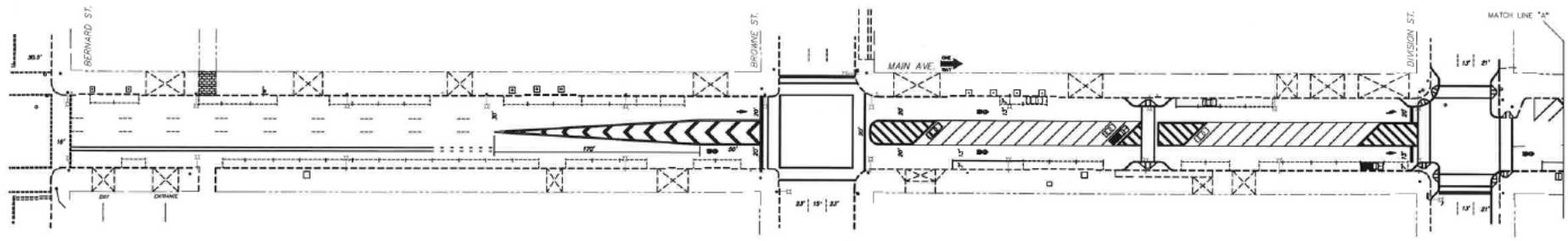
Concept Pilot Project – Maintains 1-Way Street

Does not preclude future changes

Project Goals:

“Rambla” – Ramble / Public Space / Promenade

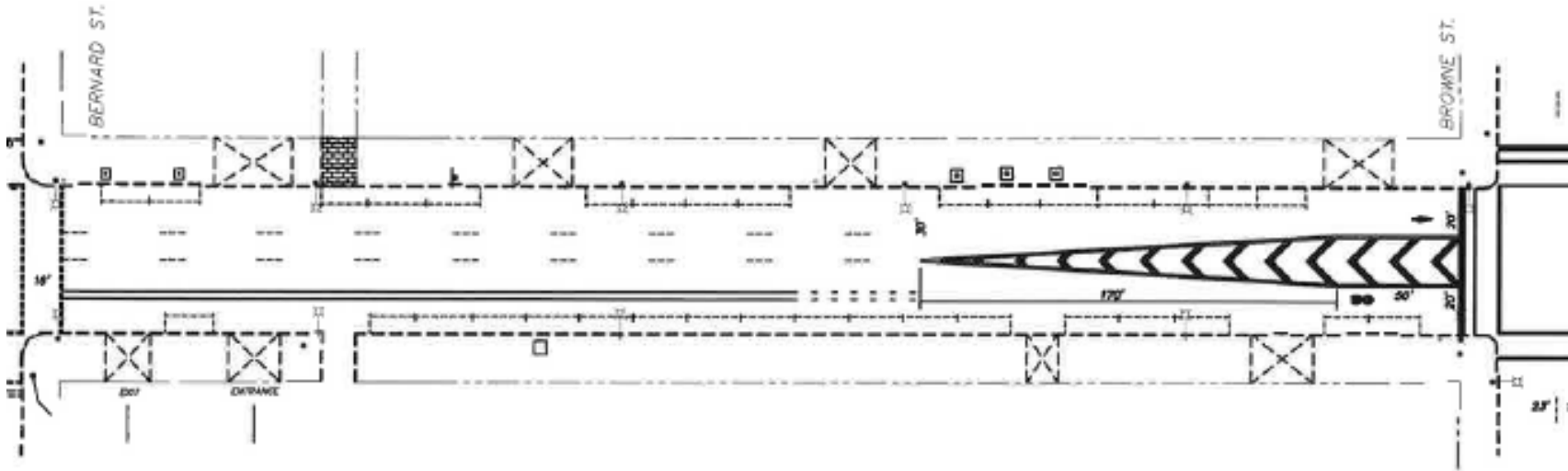
- Walkable place in order to ‘be seen’
- Convertible / Festival Street
- Pedestrian Oriented – Slow Traffic
- Mid-block crossing
- Bicycle Friendly – Slow Autos, Sharrows, Bicycle Parking



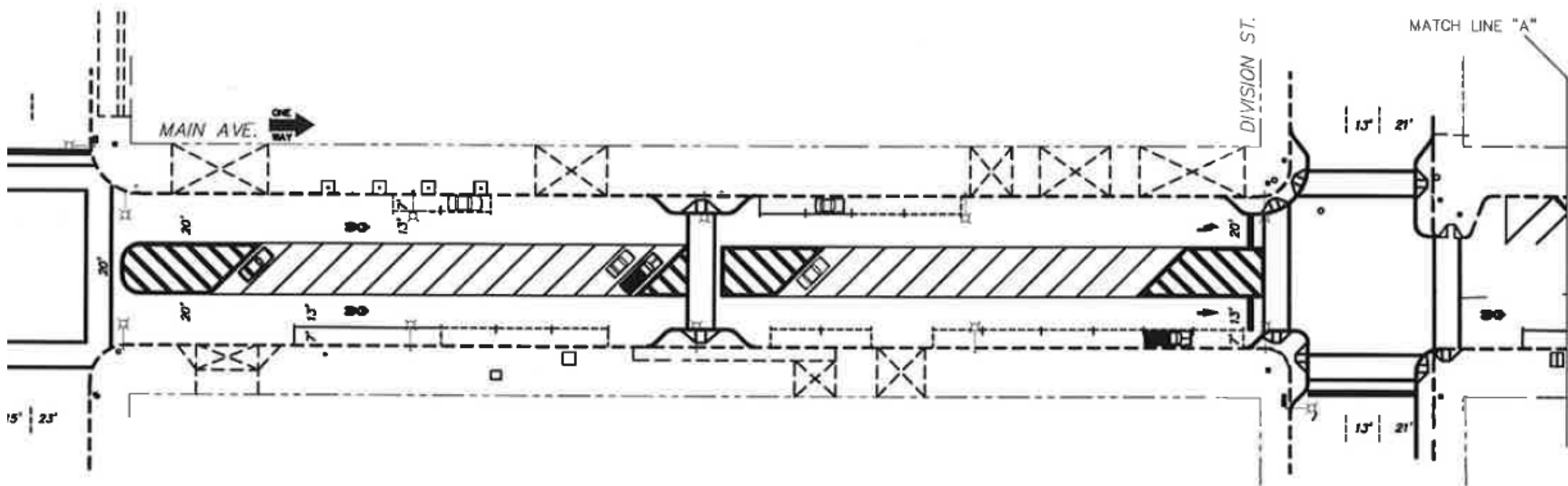
CONCEPT DRAWING ONLY  
NOT FOR CONSTRUCTION

# Main Avenue Roadway Design

Striping, Signage, Small Scale Landscaping

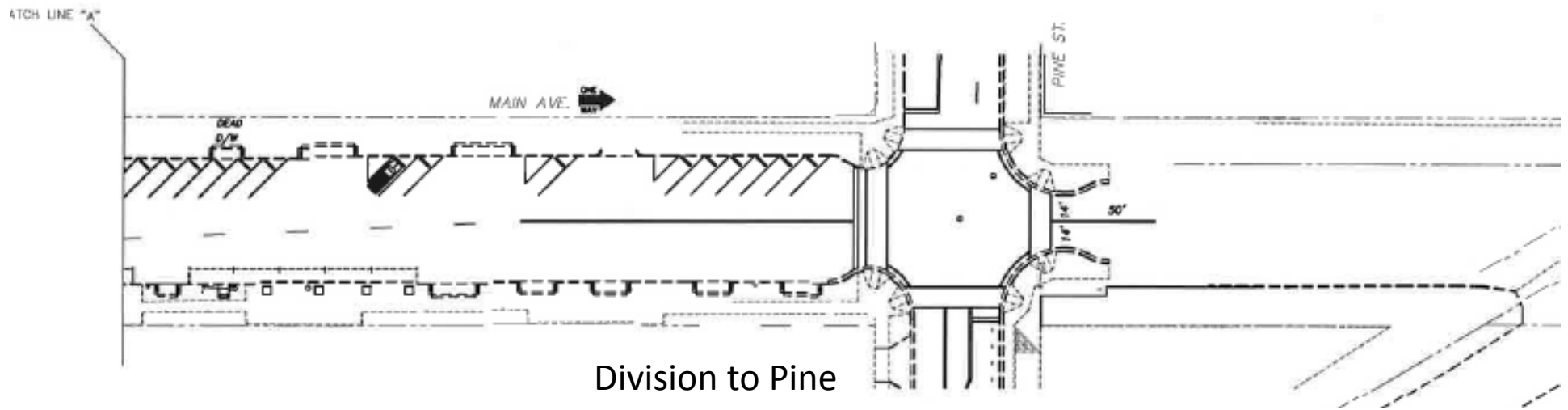


Bernard to Browne



Browne to Division





# Questions received so far

- Will you be able to turn left onto Division from the far right lane of Main Avenue?
- How would pedestrian right of way work with a center parking lane? (Same as crosswalk or mid-block crossing)
- Can a speed bump be added to slow down traffic and ensure safety of those in the middle parking strip? (Street configured to slow traffic)
- What will the speed limit be? (20 MPH – Maybe 15 if allowed)
- Will the loading zones remain?
- Where will trees be added near parking strip?
- Will trees be placed on both sidewalks, where existing tree locations need to be balanced?
- Will banner lighting be added across the block?
- Will there be additional trash and recycling bins added?
- In the future will Main be restored to a two way street?
- Who will be in charge of maintenance, City or business owners? (i.e. provide power to lights, change bulbs over the street, water trees, empty trash, etc.)
- Has consideration been given to managing the block if we have a major snow event? (Yes – snow plowed to middle parking area)
- How much additional parking from Browne to Division, and Division to Pine? (Depends on Final Design. (Center Parking adds by far the largest amount)

# Comments received multiple times

1. Concern: Ped & Bike share lane safety concerns & bike lane requests
  - Focus on for Design phase. Concept works in other Bike & Ped Environments
2. Two-way Main Street - Ensure pilot does not preclude future changes
3. Free parking - Pay by Plate parking system
4. Truck deliveries & maintaining loading zones – Yes, Agenda item
5. Portable potted trees - Agenda item
6. Too focused on cars - Agenda item
7. Concerns about transition to two lanes - Agenda item
8. Sustainable irrigation (via reclaimed water from Saranac building)
  - Agenda item
9. Keep center lane open and angle parking on each side of the street
  - Adds little parking & not as safe for Bike & Peds
10. More kiosk parking - Agenda item
11. How will snow removal work? - Plow to the middle – Desire less on sidewalks

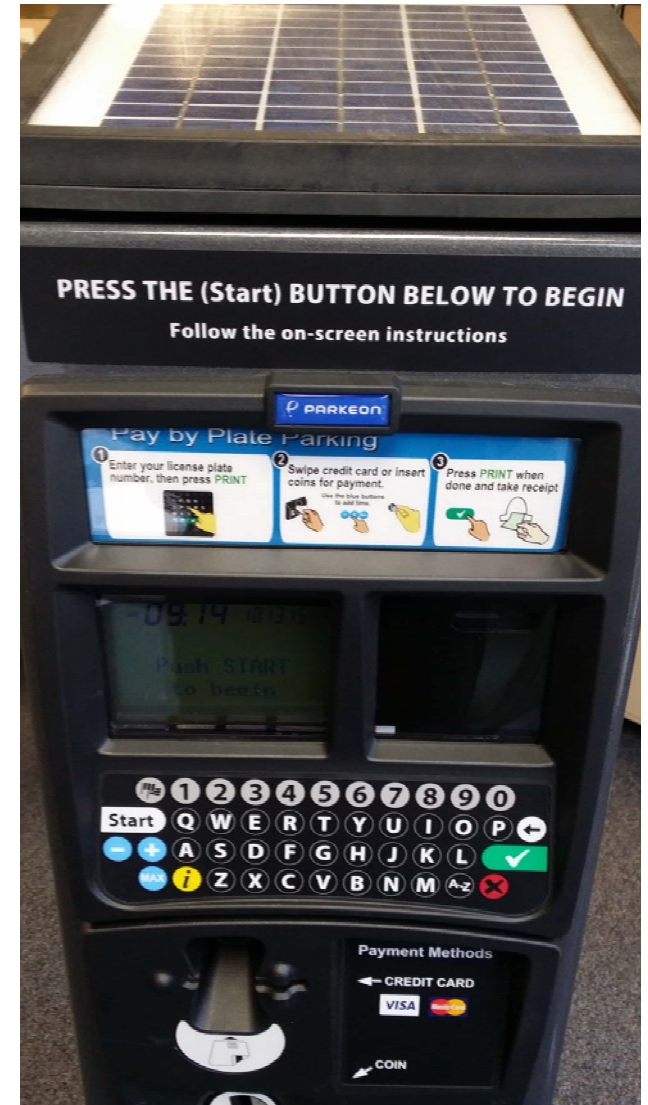


# Process Steps

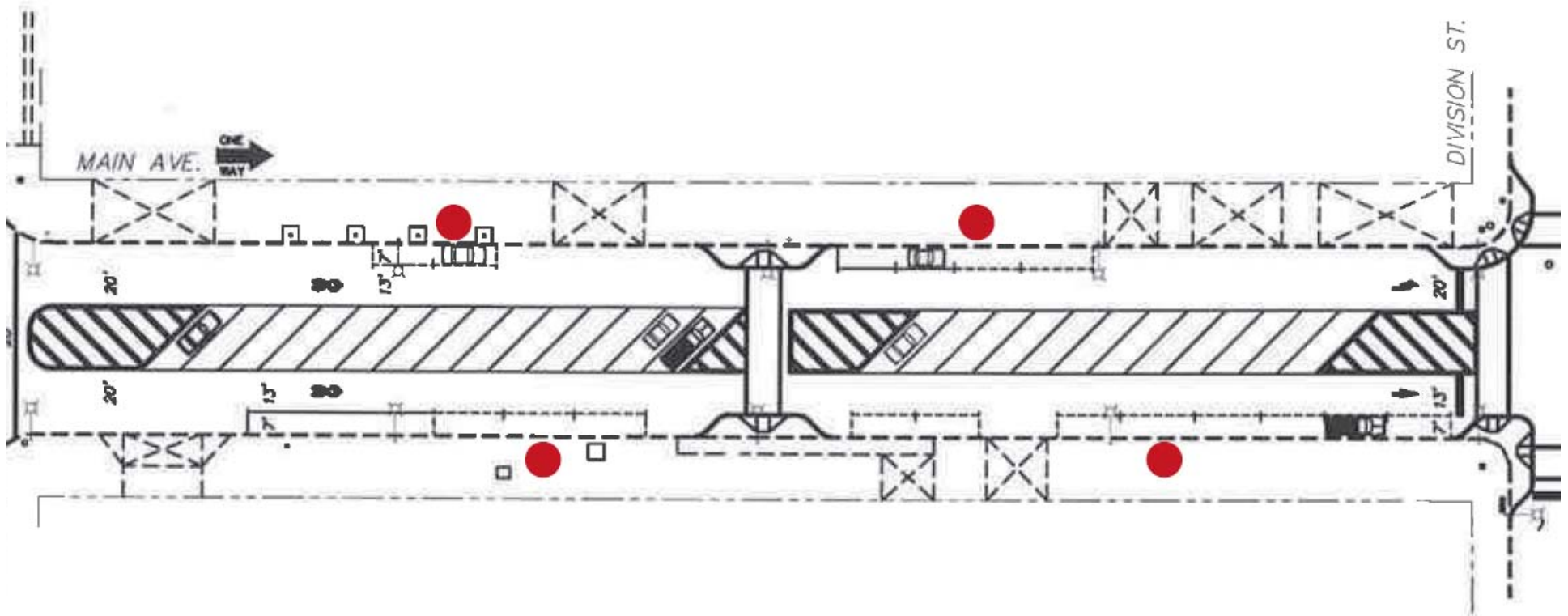
- Today – Review Feedback and explore design details
- Next – Complete 60% Design - **Feedback**
- Finalize Design – Advertise / Bid / Construct
  - Consistently 50+ Degrees out (Paint requirement)

# Parking System Change

- Kiosks in a “Pay by Plate” format
  - Mobile Phone app.



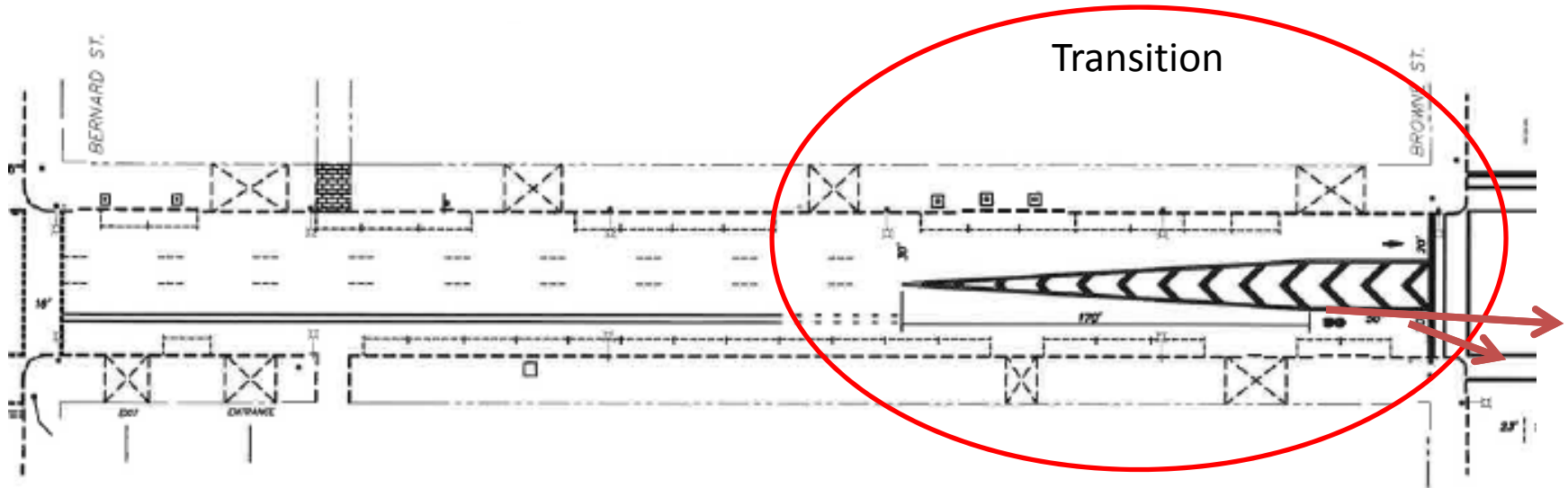
# Feedback on Kiosk Locations



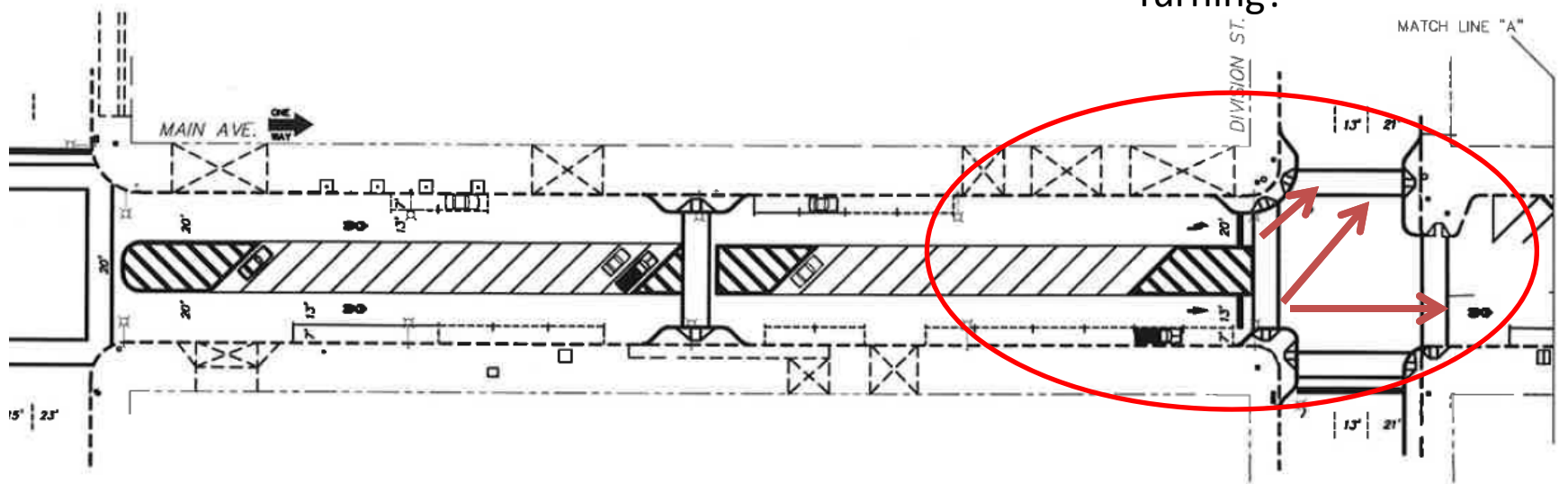
● PROPOSED KIOSK LOCATIONS



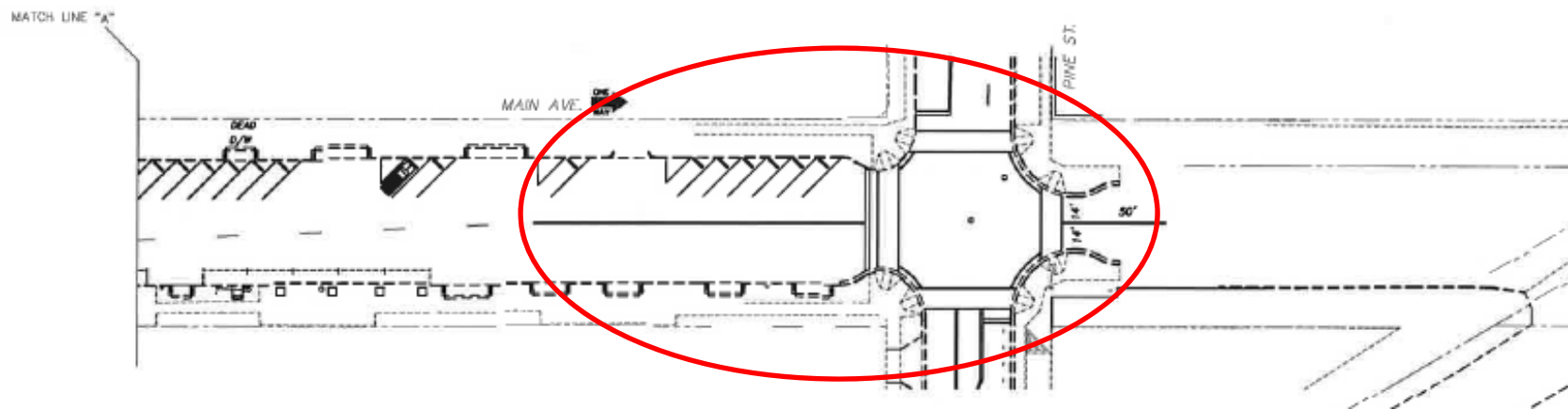
# Turning Movement Needs



Bernard to Browne



Browne to Division



Division to Pine

# Landscaping and Lighting

- Lighting
  - Vaulted Sidewalks
  - Power
- Sidewalk and Street Planters
  - Tree Replacement
- Street Furniture
- Bicycle Parking and other Facilities

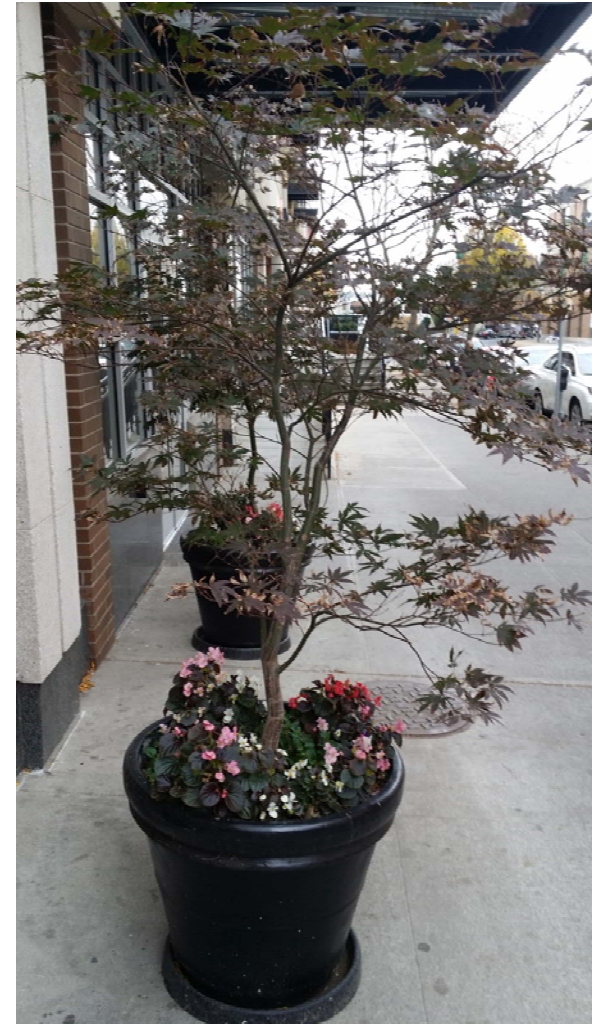
Maintenance options



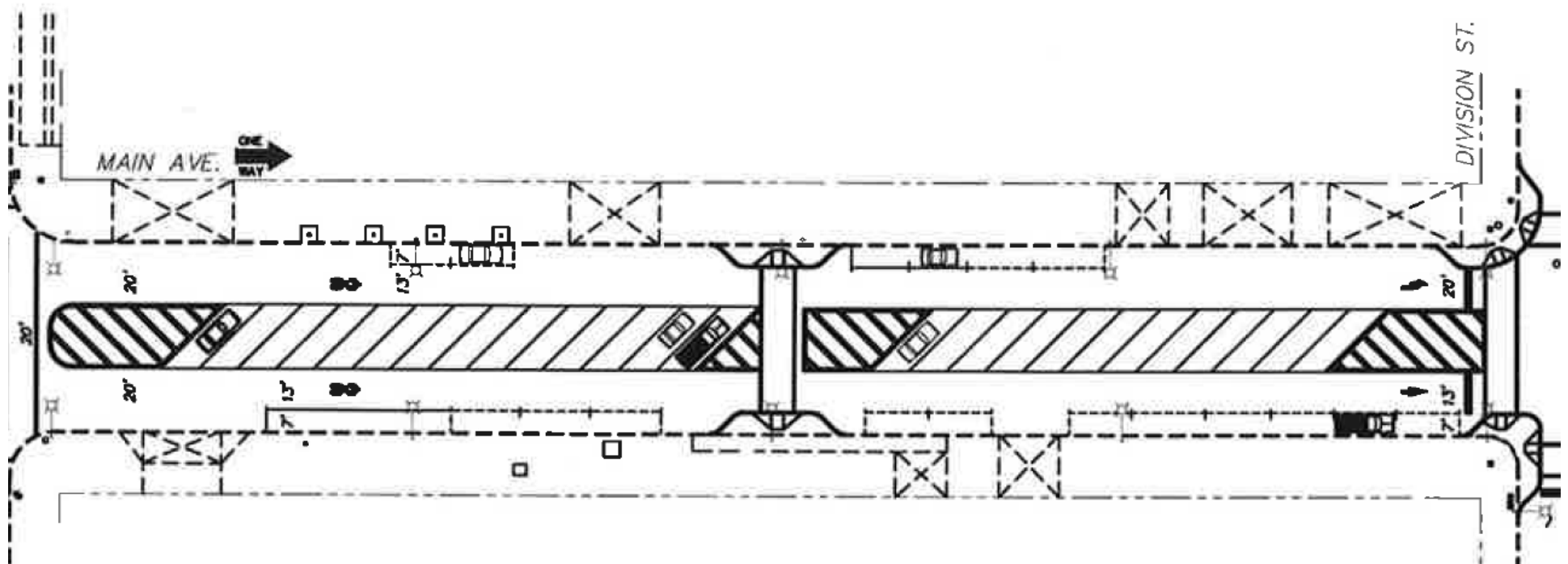
# Planters





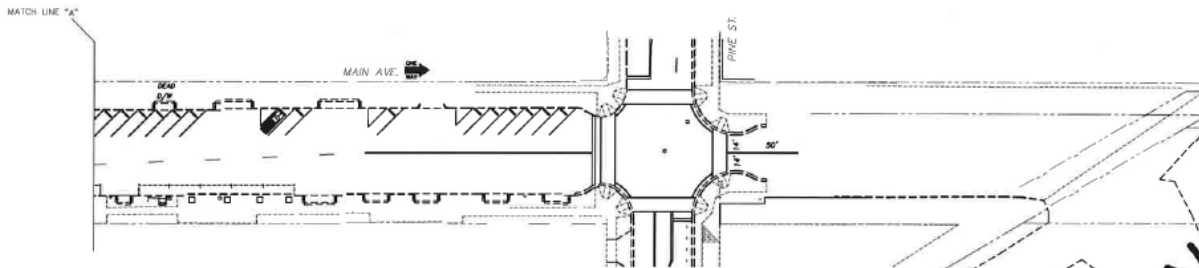
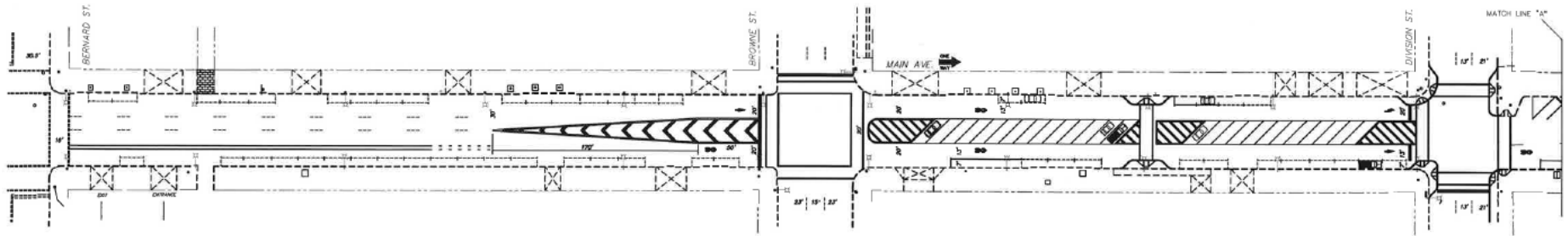


# Delivery Needs & Loading Zones



- Sidewalk Parallel Parking restricted until 10 a.m. or other?
- After 10 a.m. maintain existing loading zones
- Alleys?

# Questions / Feedback?



CONCEPT DRAWING ONLY  
NOT FOR CONSTRUCTION