



MAIN AVENUE STREETSCAPE PILOT PROJECT - PROJECT OVERVIEW

Planning & Development Services | P: 509.625.6300 | E: bdsinfo@spokanecity.org

▼ Aerial Photo of Project Area

Project Summary

The new streetscape design aims to promote this vibrancy through flexible streetscape elements that are both functional and provide creative community gathering opportunities. Over \$160,000 will be invested on W Main Ave. The project calls for the restriping of W Main Ave between Washington St and Pine St.

In addition to restriping the following amenities are proposed on Main Ave between Browne and Division Streets:

- Planted entry feature
- Creation of a flexible multi-purpose space in the center of the street that can be used for different purposes during different times. During the weekday it will be a space for diagonal car parking. During special events, it can serve as a gathering area for people as well as parking.
- Mid-block crossing with curb extensions and planting
- Mid-block planters and benches
- Pay-by-Plate parking system with four kiosks



Washington St. Northern lane becomes left turn only. The other three lanes remain unchanged. The existing bike lane is maintained.

Browne St.

Angled back-in parking added on north side of street and traffic is shifted to outside lane approaching Browne St. The bike lane transitions to sharrow on this block.

Division St.

Parallel parking is maintained, but will be restricted from 6am to 10am for deliveries. Angled parking replaces two middle lanes. Other streetscape amenities include a entry feature, mid-block crossing, and installation of planters and benches mid-block.

Pine St.

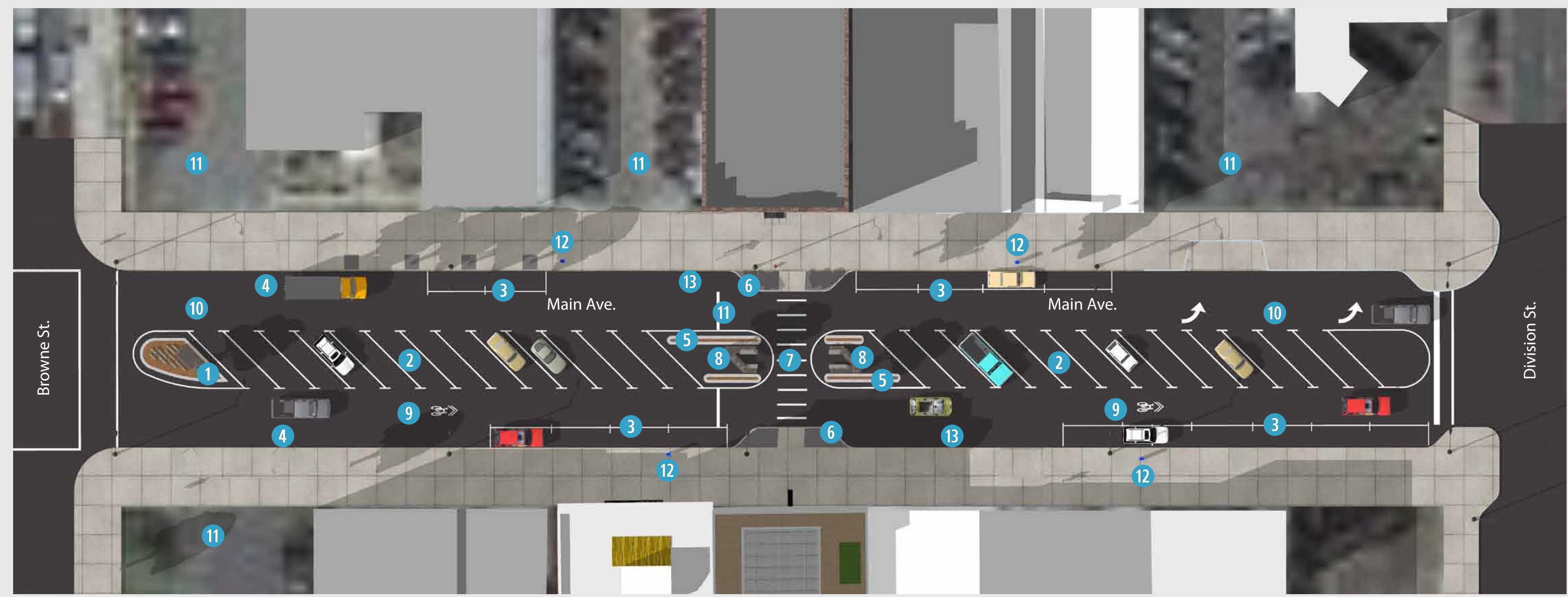
The left turn lane is shifted south to accommodate added angled parking on the north side of Main Ave. The eastern traffic island is removed. Southern lane becomes a through / right turn.



▲ Entry Feature



▲ Mid-block Crossing



- 1 Entry Feature
- 2 Angled Parking
- 3 Parallel Parking
- 4 Maintained Loading Zone
- 5 Protective Curbing
- 6 Curb Extension
- 7 Mid-block Crossing
- 8 Planters + Benches
- 9 Sharrow Lane
- 10 Left Turn Only Lane
- 11 Existing Parking Lot
- 12 Pay-by-Plate Kiosk
- 13 Fire Lane Zone

▲ Browne St. to Division St. Enlargement Map

These are conceptual graphics based on drawings dated 02.25.2016. Designs are subject to change.

STREET PROJECT # 2015160



MAIN AVENUE STREETScape PILOT PROJECT - DESIGN DETAILS

Planning & Development Services | P: 509.625.6300 | E: bdsinfo@spokanecity.org

▼ Entry Feature



Drought Tolerant Plants



Corten Steel



Road Bricks



Granite Curbs



▼ Mid-block Benches and Planters



Drought Tolerant Plants



Corten Steel



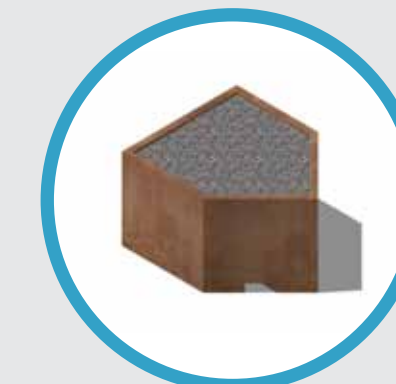
Road Bricks



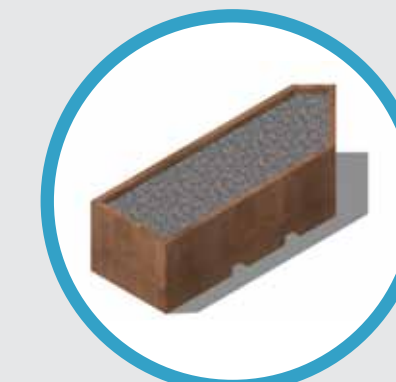
Granite Curbs



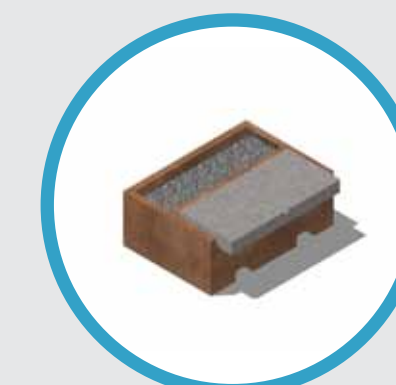
30" Tree Planter



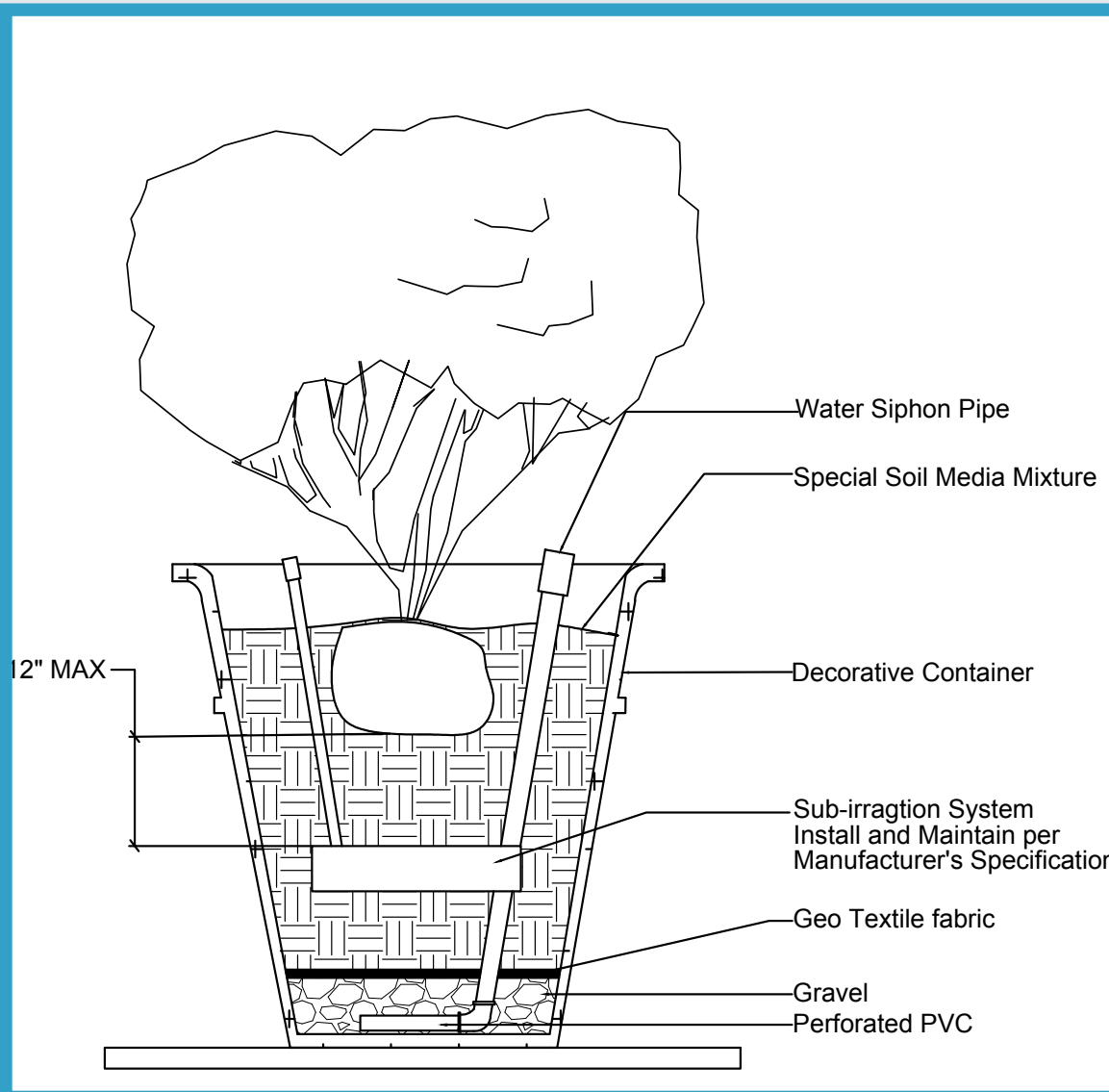
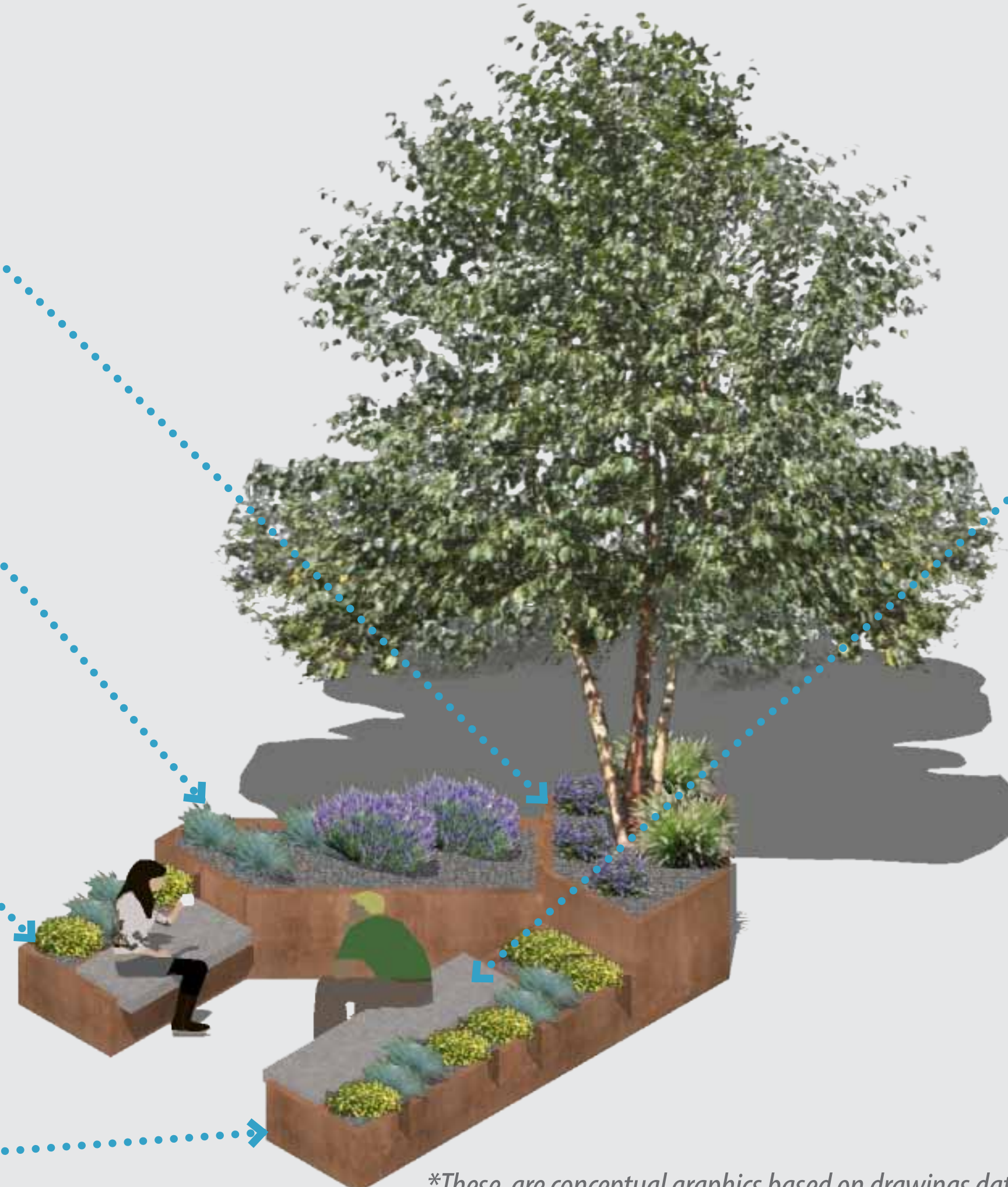
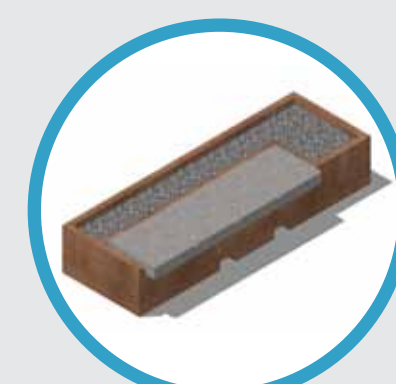
24" Planter



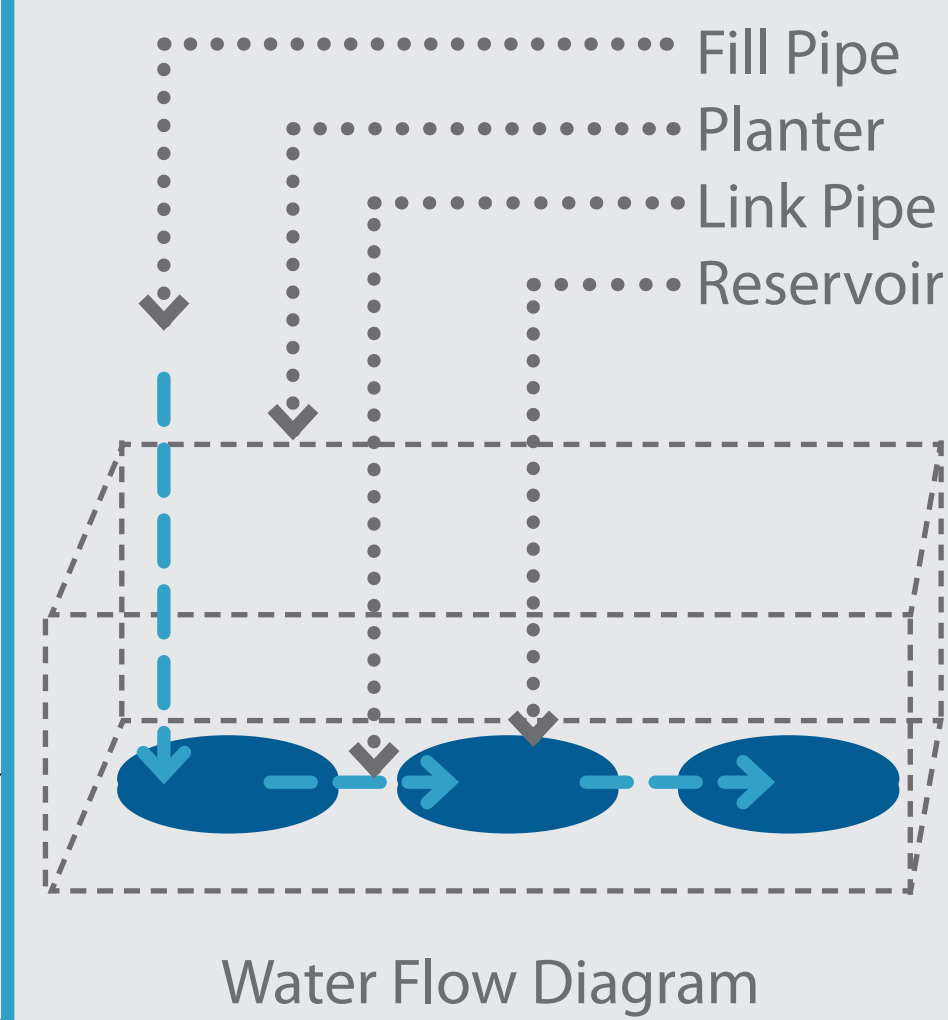
18" Short Bench Planter



18" Long Bench Planter



Sub Surface Irrigation Section Detail



Water Flow Diagram



Round Reservoir



Rectangle Reservoir

▲ Sub Surface Irrigation System

These are conceptual graphics based on drawings dated 02.25.2016. Designs are subject to change.