



Horizon 2040

Freight and Goods Mobility Work Group

February 19, 2015

HORIZON 2040

Spokane Metropolitan
Transportation Plan



Population & Employment



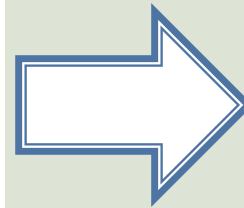
2010

- Pop. = 471,221
- Emp. = 194,456



2040

- Pop. = 636,000
- Emp. = 262,576



- Strategies
- Investment Priorities
- Performance Measures and Targets

Requirements

- ▶ Transportation Air Quality Conformity
- ▶ Financial constraint

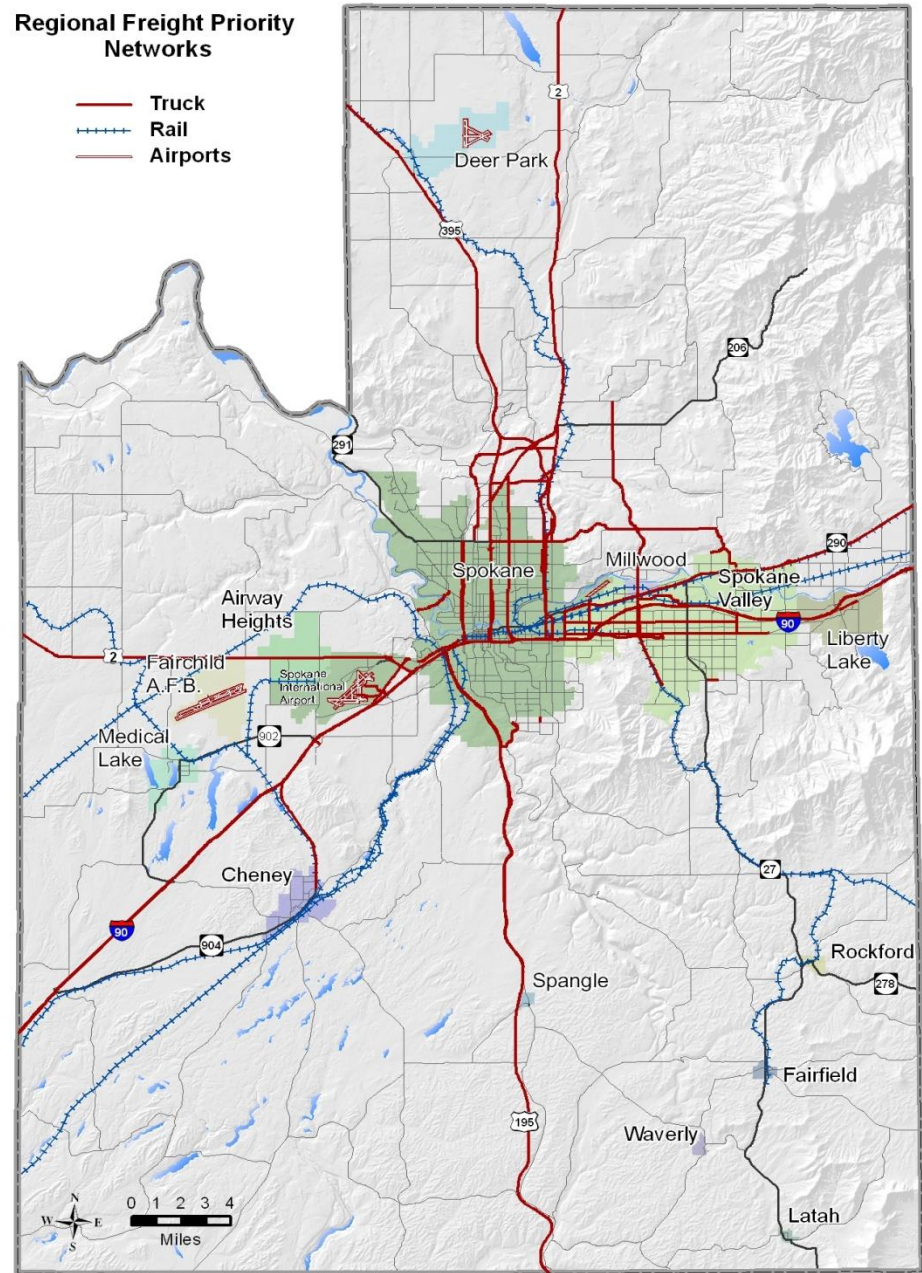
	Revenues	%
Regional (SRTC)	\$285 million	3%
Local Jurisdictions	\$3.7 billion	34%
Spokane Transit	\$3.4 billion	32%
WSDOT	\$3.5 billion	32%
Total	\$10.9 billion	

	Expenditures	%
Operations & Maintenance	\$4.9 billion	45%
Preservation	\$2.5 billion	23%
Regionally Significant Capital	\$2.3 billion	21%
Programs	\$1.1 billion	10%
Total	\$10.9 billion	

Regional Freight Network

Regional Freight Priority Networks

- Truck
- Rail
- Airports





Phase 2

Transportation Investment

Blueprint

Strategies for Implementation

Near Term (2014-2020)

- ▶ Barker Rd Overpass
- ▶ Bigelow Gulch/Forker Phases 2-4a
- ▶ I-90 Interchanges
 - Geiger
 - Medical Lake
 - Barker
- ▶ I-90 widening between Barker and Harvard
- ▶ North Spokane Corridor – Francis to Spokane River



Mid Term (2021-2030)

- ▶ Pines (SR 27) Underpass
- ▶ Bigelow Gulch/Forker Phases 5-6
- ▶ I-90 Interchange
 - Henry
- ▶ US 395 passing lanes
- ▶ SR 904 widening – Betz Rd to I-90
- ▶ North Spokane Corridor – Spokane River to I-90 (interim connection)



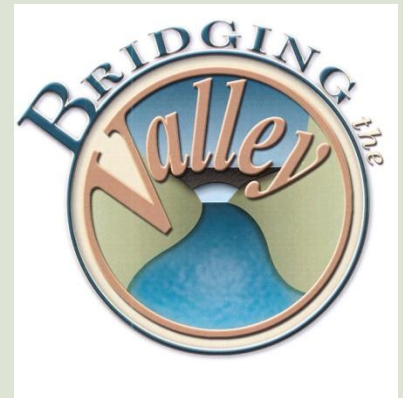
Long Term (2031-2040)

- ▶ Sullivan Rd Bridge over Trent (SR 290) and BNSF
- ▶ US 195 Interchanges
 - Hatch
 - Meadow Lane
- ▶ North Spokane Corridor – Spokane River to I-90 (full build)

What is Bridging the Valley?

Long Term Regional Strategy to:

- ▶ Separate train and vehicular traffic
- ▶ Consolidate two rail mainlines into one
 - Improve safety
 - Improve access
 - Reduce delay/improve traffic flow
 - Reduce noise levels
 - Enhance development opportunities

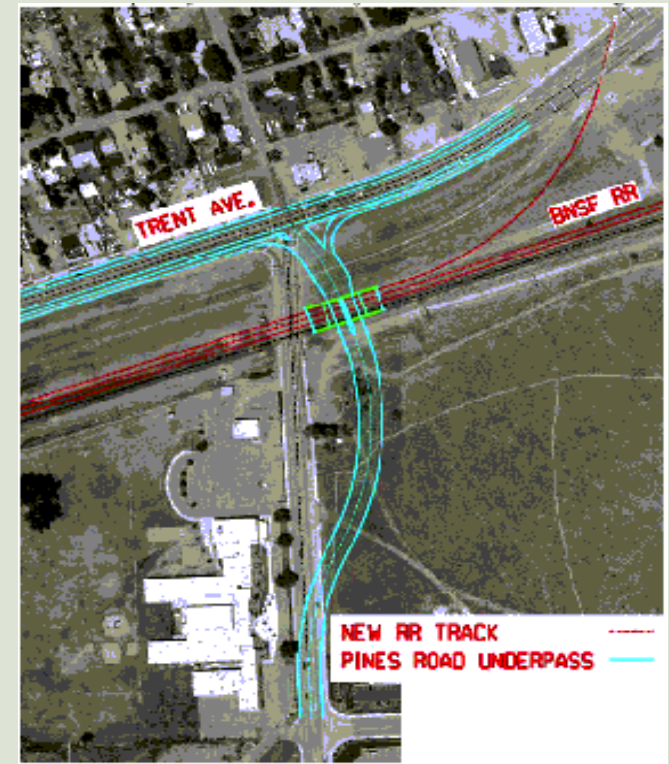


At Grade Crossings

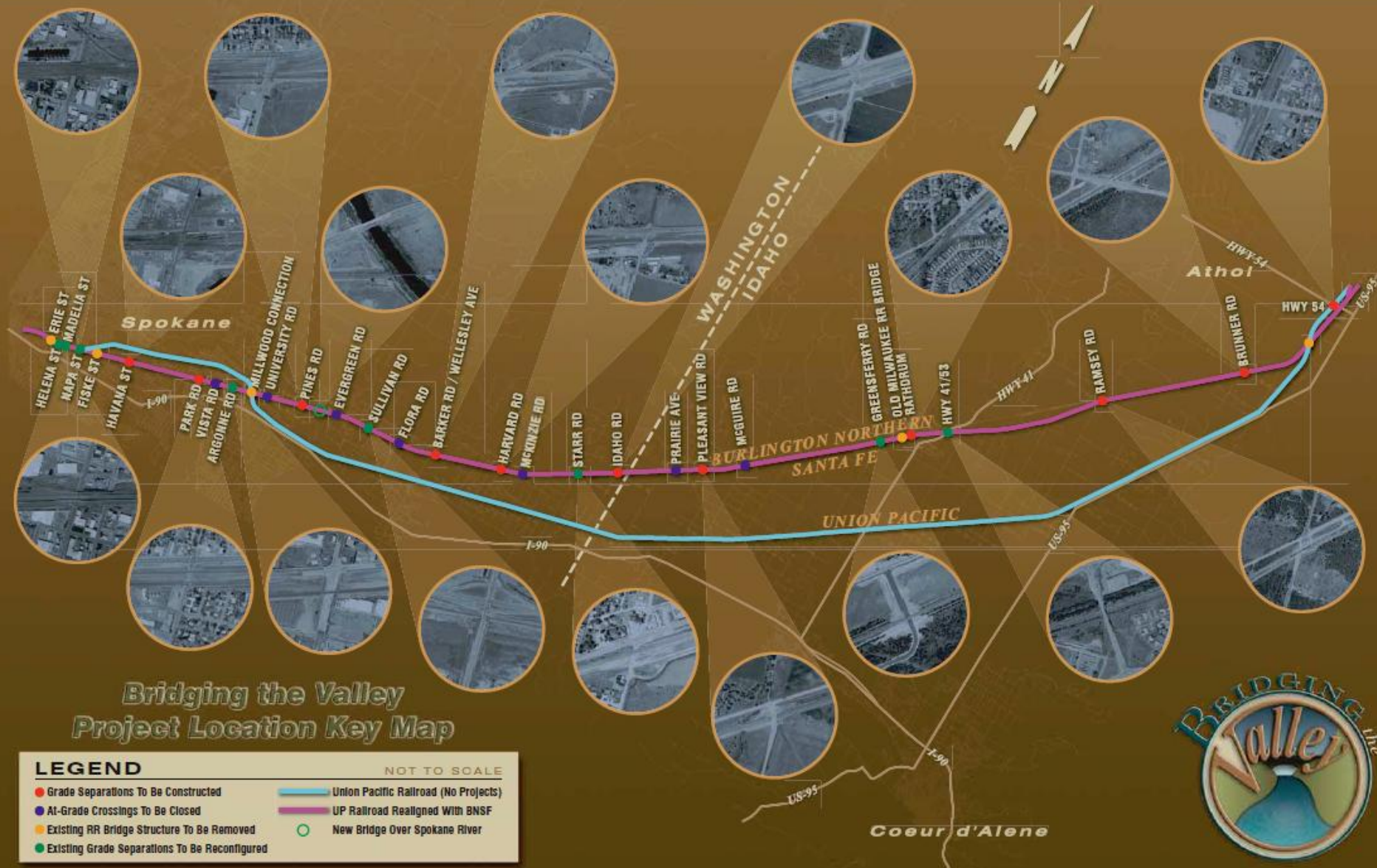


Grade Separations

- ▶ Separate vehicle traffic from train traffic in the 42 mile corridor between Spokane, WA and Athol, ID
- ▶ 75 railroad/roadway crossings
- ▶ 19 grade separation projects



Grade Separation Projects



Havana St. Bridge



\$23 million



Mainline Consolidation

- Construct additional track capacity on the BNSF corridor
- Improve existing centralized train control signaling system
- Construct a new two-track bridge over the Spokane River
- Construct a new UPRR Yard
- Provide other track improvements in yards and connections
- Remove majority of UPRR mainline and associated crossings



BtV Costs

Grade Separated Crossing and Structures	\$301 million
Earthwork, Civil, Track and Signal/Telecomm.	\$510 million
Right-of-Way	\$15 million
Total	\$827 million

HORIZON 2040: The Metropolitan Transportation Plan for the Spokane Metropolitan Planning Area



Horizon 2040 was adopted by SRTC's Board on December 12, 2013. Horizon 2040 is the Metropolitan Transportation Plan (MTP) for all of Spokane County. It is a long-term, multimodal "blueprint" for transportation aimed at meeting the mobility needs of the area through the year 2040. It is based on projections for growth in population, housing and jobs and takes into consideration every mode of transportation, such as private vehicles, public transit, bicycling, walking, freight movement, rail and air travel.

What is Horizon 2040 Folio Transportation Now & In the Future Folio Transportation Opportunities Folio

Horizon 2040 includes a financially-constrained list of transportation projects from each of the jurisdictions within Spokane County to construct or complete over the next 20+ years. The MTP process isn't over though. In 2014, staff will work to develop performance measures to implement Horizon 2040.

Approved by the SRTC Policy Board December 12, 2013.

**Executive Summary
Chapter 1- Who We Are
Chapter 2- Where We're At
Chapter 3- Where We're Going
Chapter 4- How We Will Get There**

**Appendix A - Public Comments
Appendix B - Land Use and Planning Assumptions
Appendix C - Financial Forecast
Appendix D - Glossary**





Questions?

Ryan Stewart
(509) 343-6370
rstewart@srtc.org