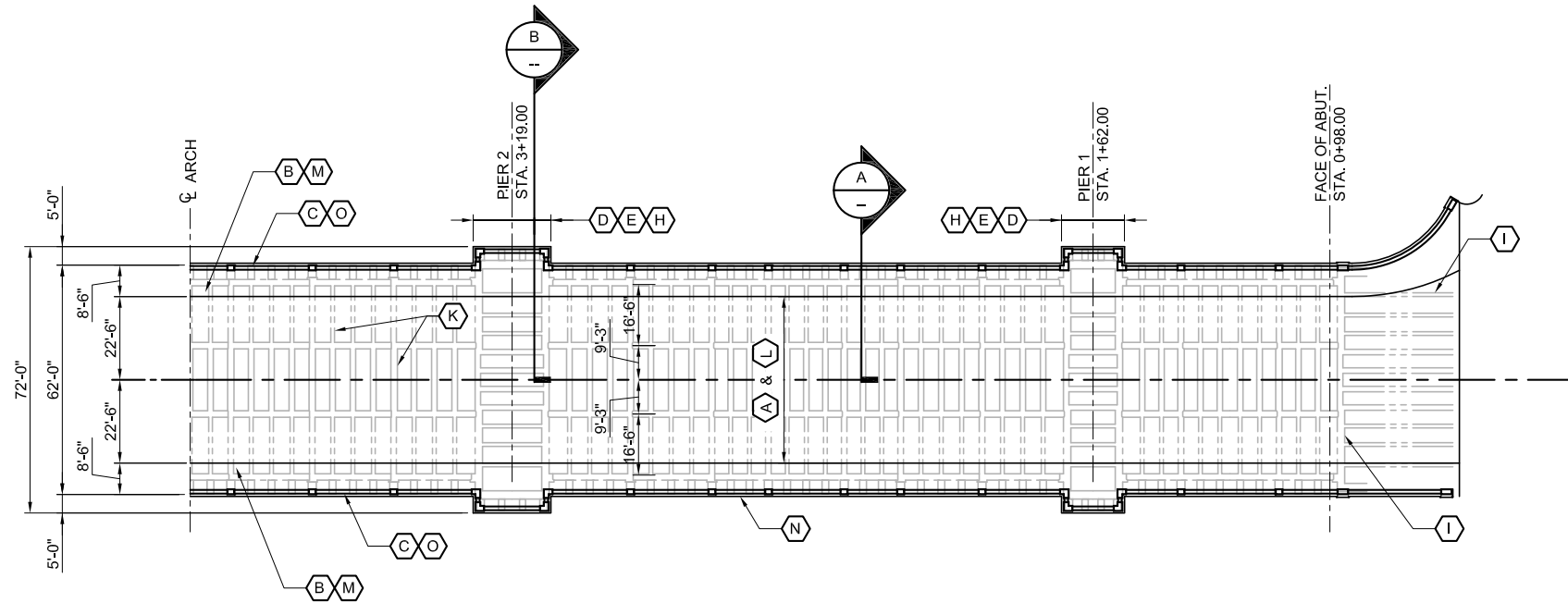
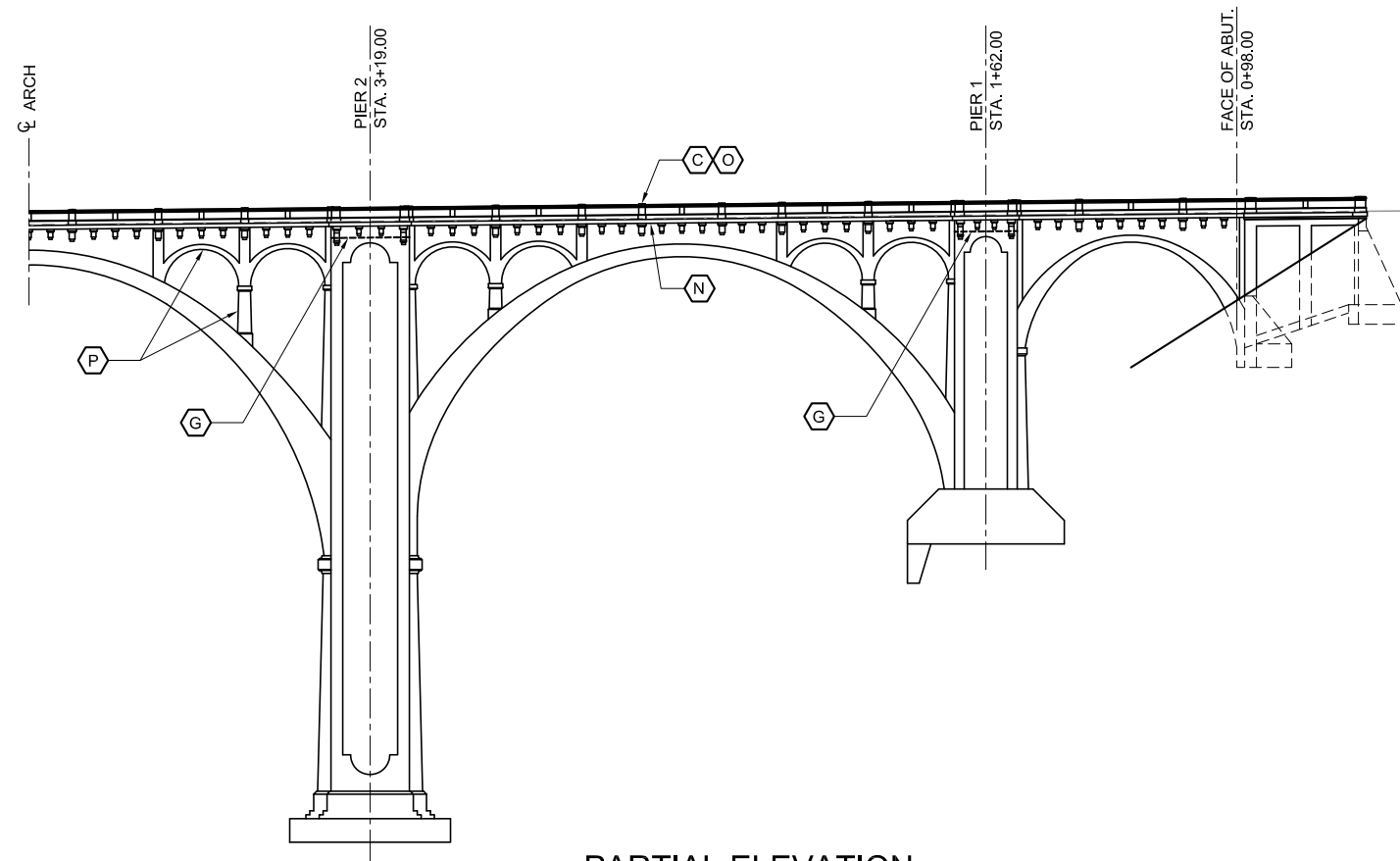


Exhibit C-1  
Plan & Elevation

Latah Bridge Rehabilitation Study



PARTIAL DECK PLAN

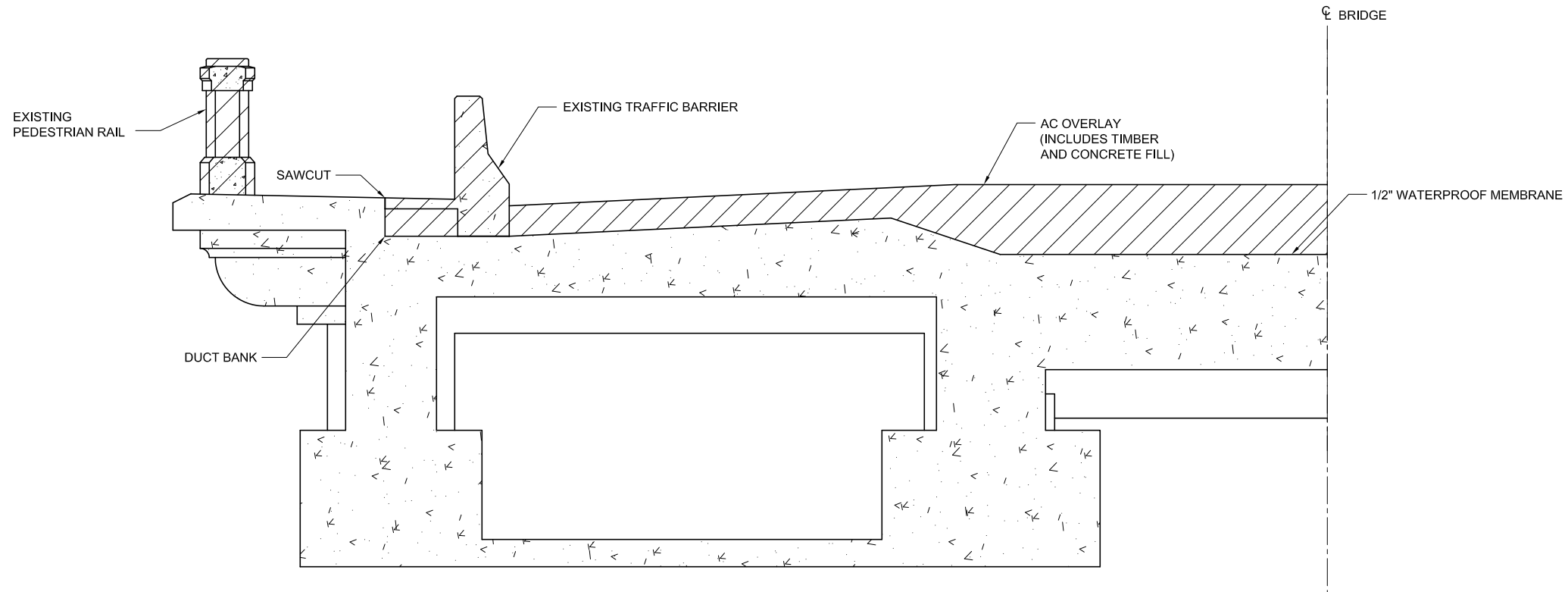


PARTIAL ELEVATION

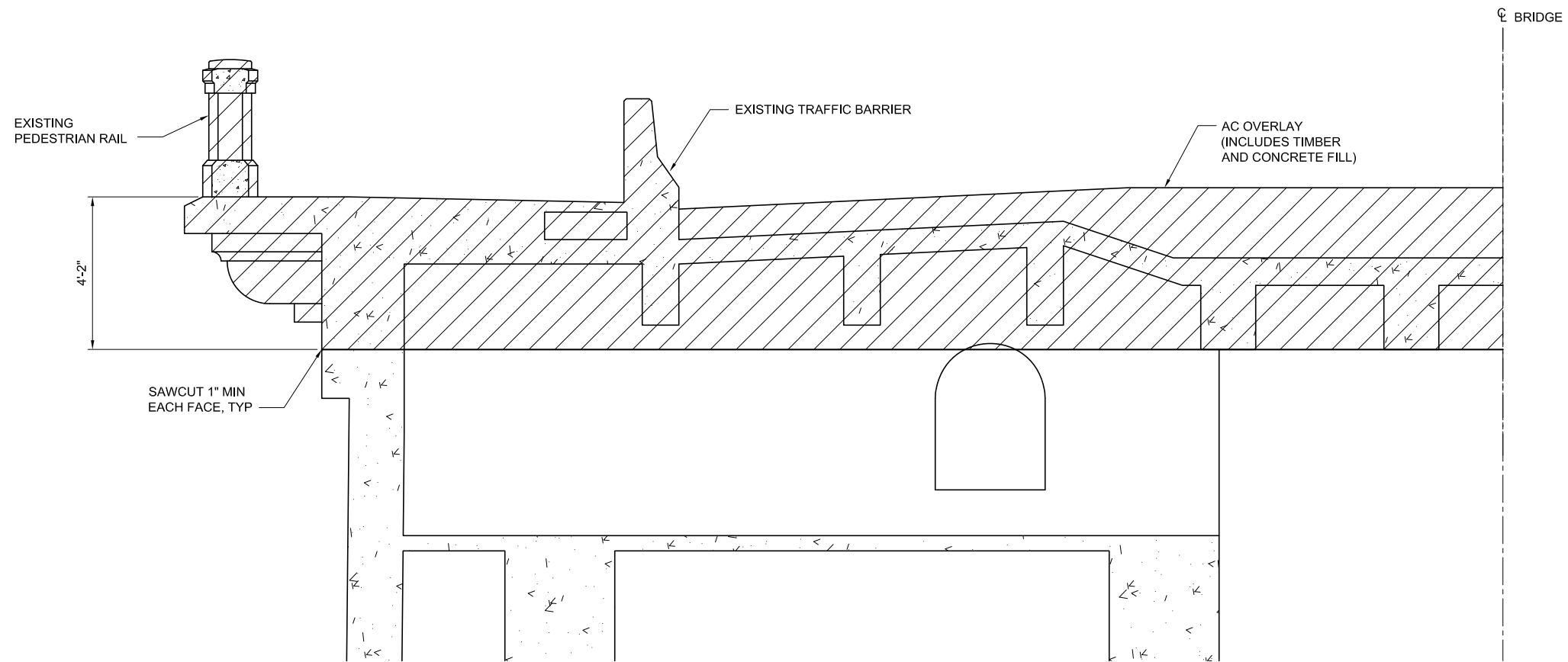
WORK ITEMS

- (A) REMOVE EXISTING OVERLAY.
- (B) REMOVE EXISTING TRAFFIC BARRIER AND PORTION OF SIDEWALK.
- (C) REMOVE EXISTING PEDESTRIAN RAIL.
- (D) REMOVE EXISTING PIER TOP.
- (E) REMOVE EXISTING DRAIN PIPE.
- (F) REMOVE EXISTING LIGHT POLE AND BASE (NOT SHOWN).
- (G) INSTALL NEW METAL GRATE FLOOR.
- (H) CONSTRUCT NEW PIER TOP.
- (I) REPAIR DELAMINATIONS IN FLOOR BEAMS & STRINGERS.
- (J) REPAIR DELAMINATIONS IN DECK SOFFIT.
- (K) REPAIR FLOOR BEAMS WHERE DESIGNATED.
- (L) INSTALL 6" REINFORCED CONCRETE OVERLAY.
- (M) INSTALL NEW TRAFFIC BARRIER.
- (N) REPAIR DELAMINATED DECK AT EDGE.
- (O) INSTALL NEW PEDESTRIAN RAIL.
- (P) REPAIR DELAMINATIONS IN SPANDREL ARCHES AND COLUMNS.

Exhibit C-2  
Structure Plan  
Alternative A  
20 - Year Design Life  
Latah Bridge Rehabilitation Study



**TYPICAL DECK SECTION**

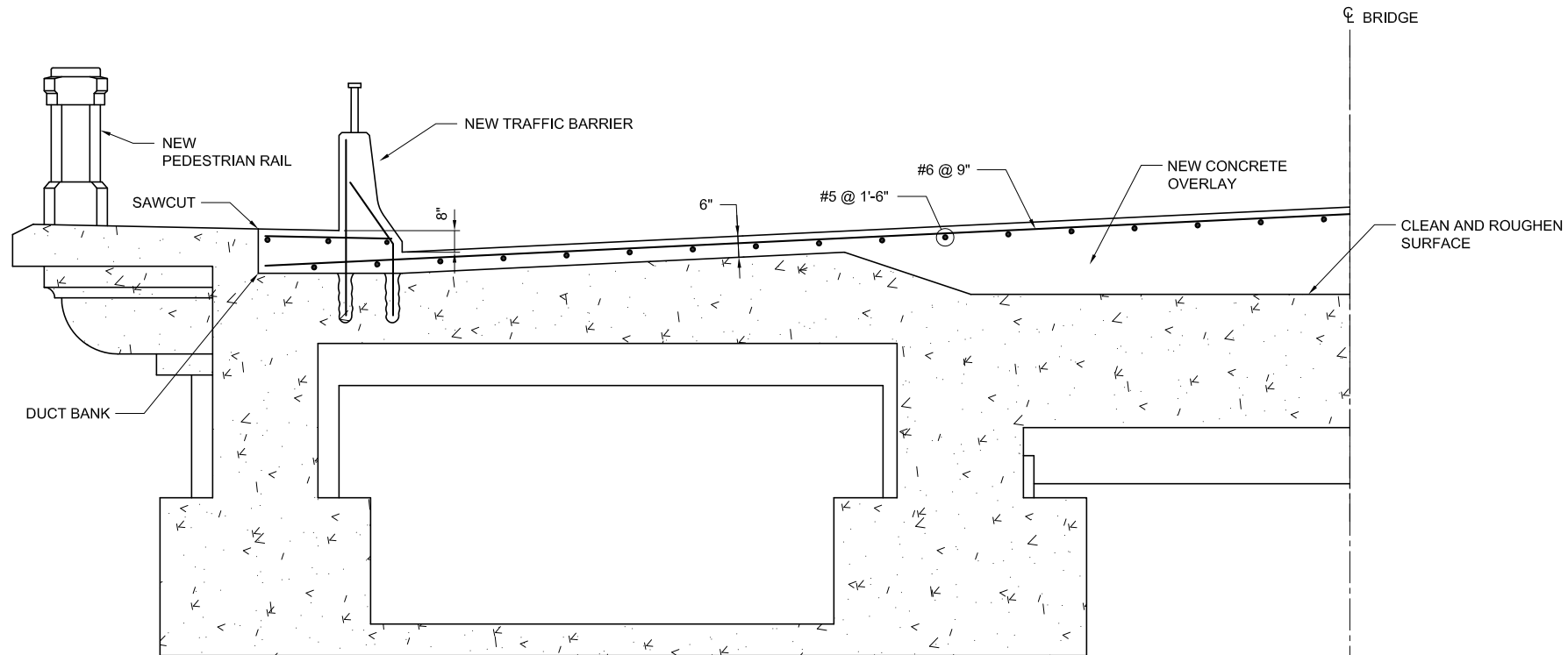


**TYPICAL PIER SECTION**

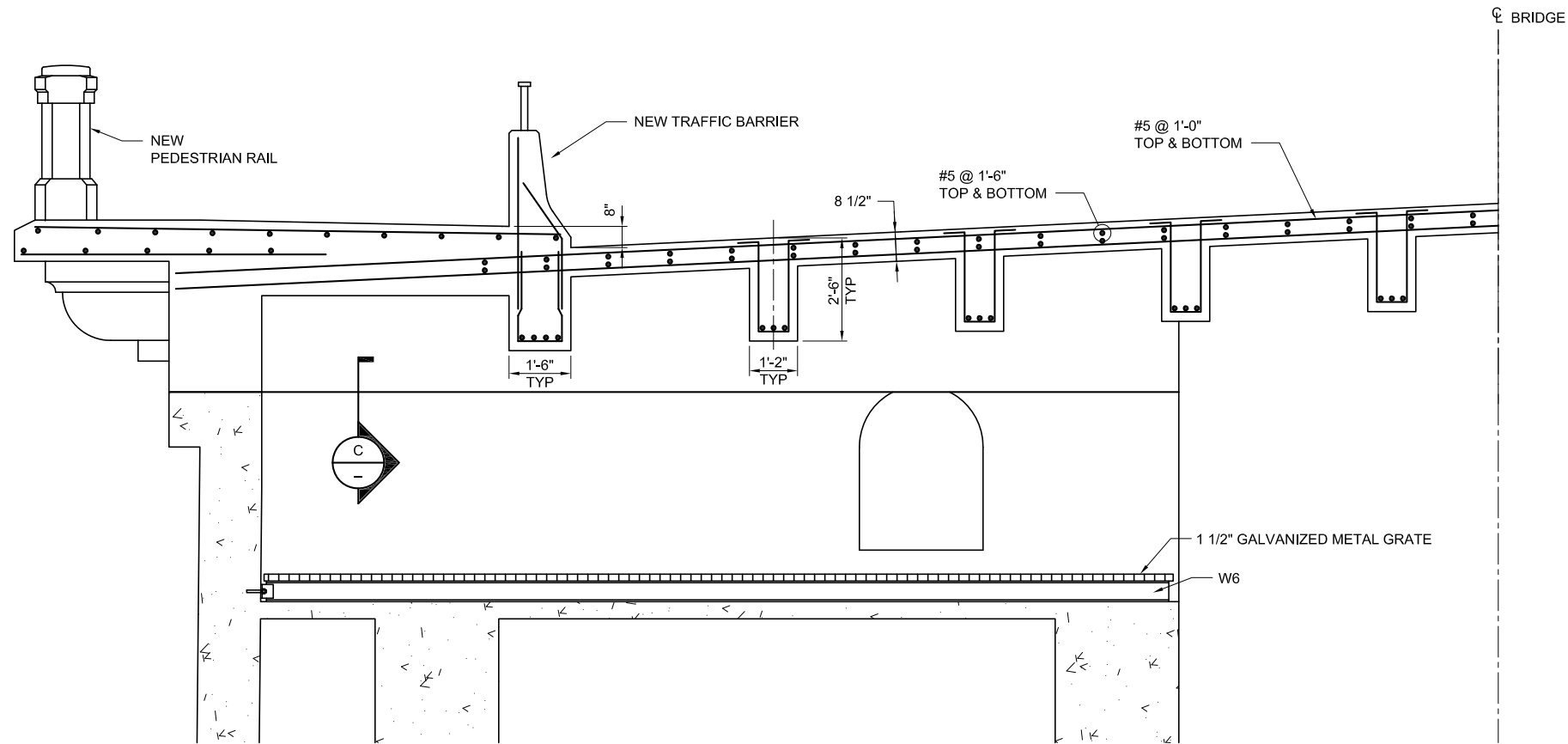
 DESIGNATED PORTION OF  
STRUCTURE TO BE REMOVED

Exhibit C-3  
Selective Removal Sections  
Alternative A  
20 - Year Design Life  
Latah Bridge Rehabilitation Study

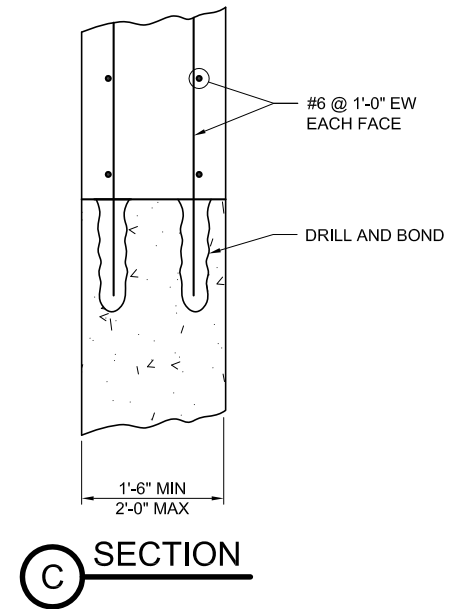
425825-Repairs-AltA-001.dwg November 09, 2012 3:20pm



**A** TYPICAL DECK SECTION



**B** TYPICAL PIER SECTION



**C** SECTION

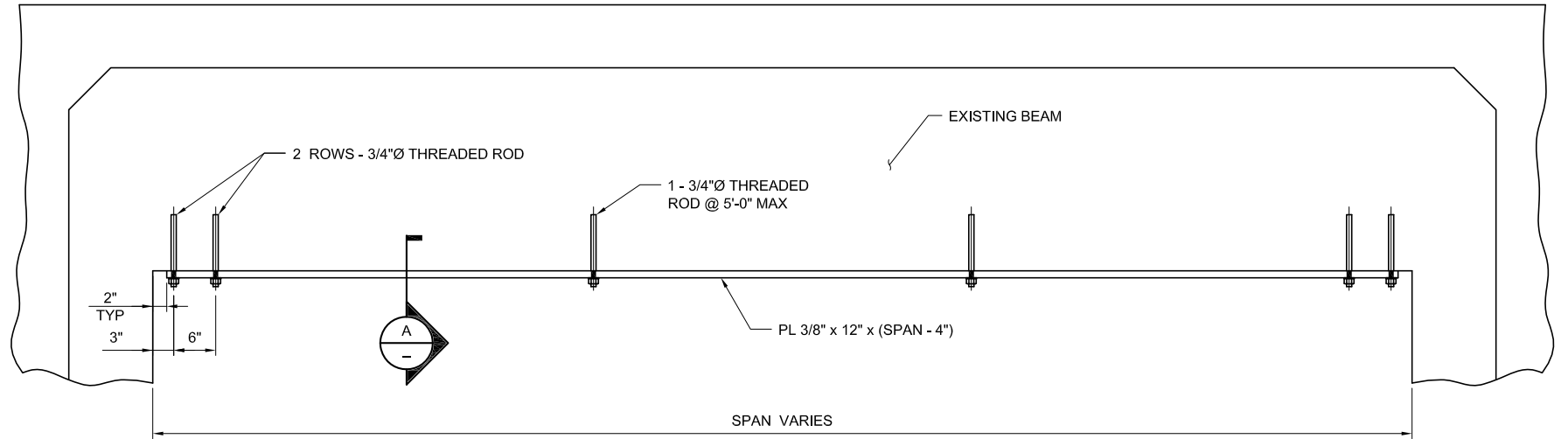
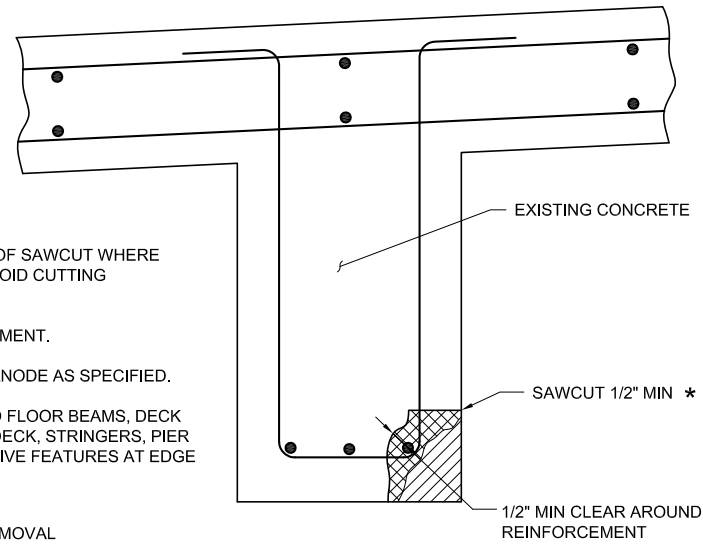
Exhibit C-4  
Repair Details No. 1  
Alternative A  
20 - Year Design Life  
Latah Bridge Rehabilitation Study

## NOTES

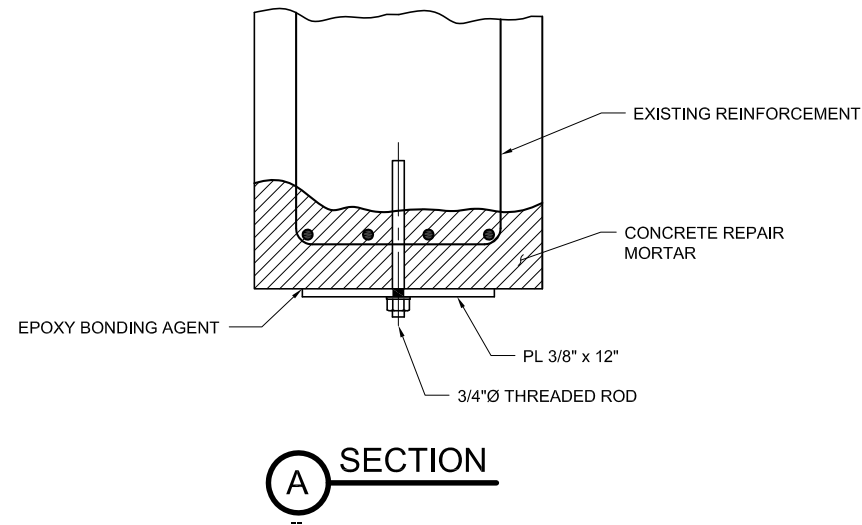
1. \* REDUCE DEPTH OF SAWCUT WHERE NECESSARY TO AVOID CUTTING REINFORCEMENT.
2. CLEAN REINFORCEMENT.
3. INSTALL PASSIVE ANODE AS SPECIFIED.
4. DETAIL APPLIES TO FLOOR BEAMS, DECK SOFFIT, EDGE OF DECK, STRINGERS, PIER FACES & DECORATIVE FEATURES AT EDGE OF DECK.



## CONCRETE REPAIR DETAIL

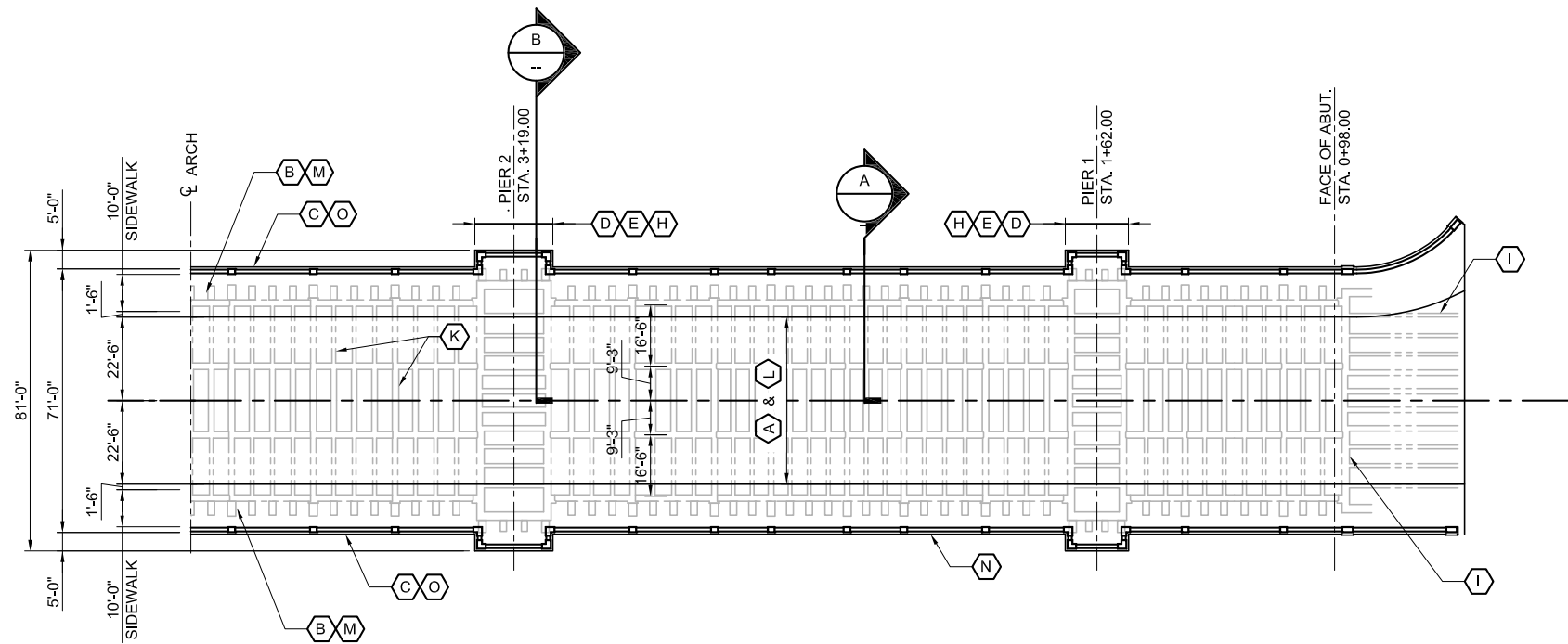


## BEAM REPAIR DETAIL

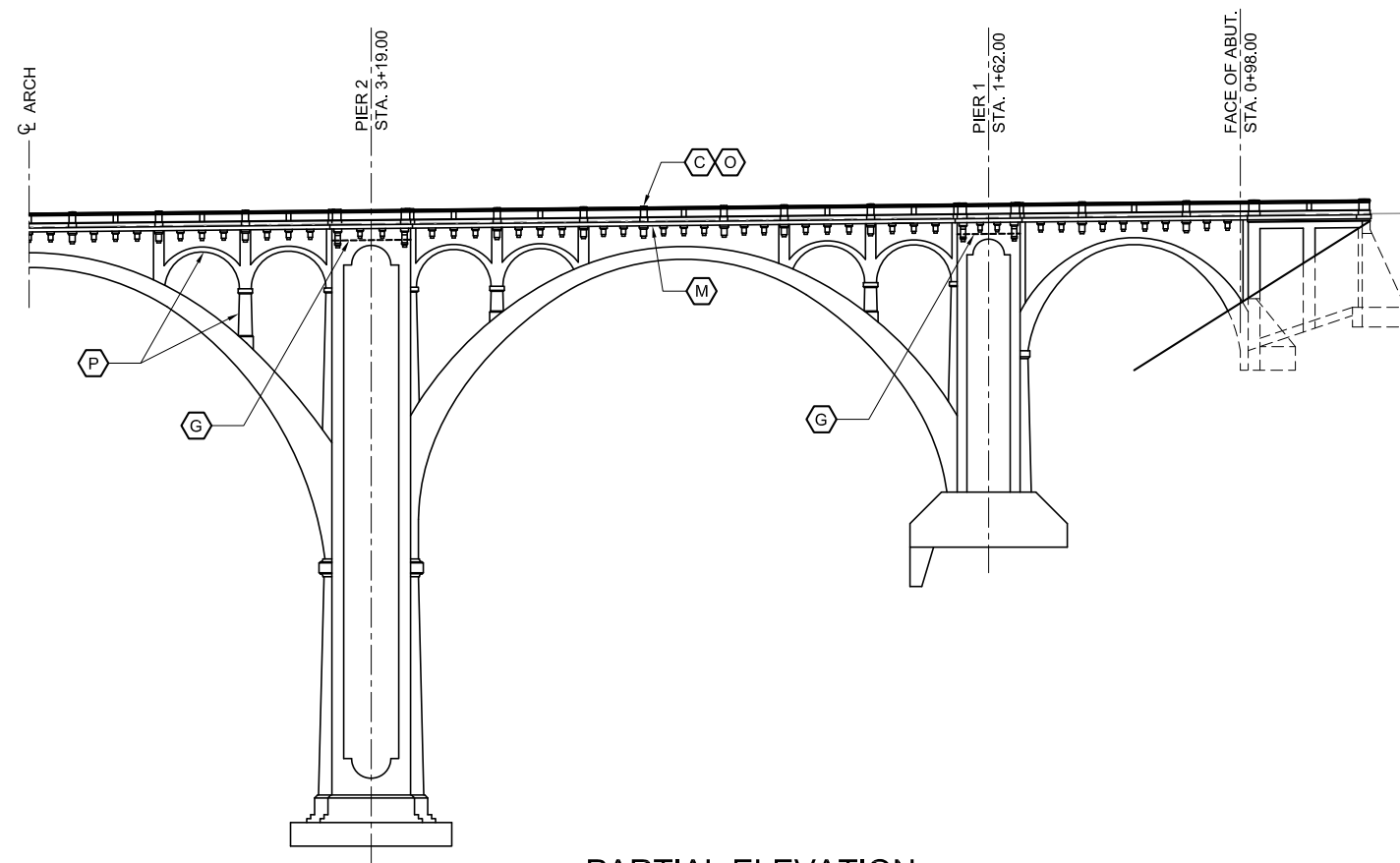


## NOTES

1. SEE CONCRETE REPAIR DETAIL FOR INFORMATION NOT SHOWN.
2. THREADED ROD, NUT & WASHER TO BE EPOXY COATED.
3. EPOXY BONDING AGENT TO BE SIKADUR 32 OR EQUIVALENT.
4. PAINT PLATE AFTER INSTALLATION.
5. INSTALL PLATE AFTER REMOVAL OF EXISTING OVERLAY & PRIOR TO INSTALLATION OF NEW CONCRETE OVERLAY.



PARTIAL DECK PLAN



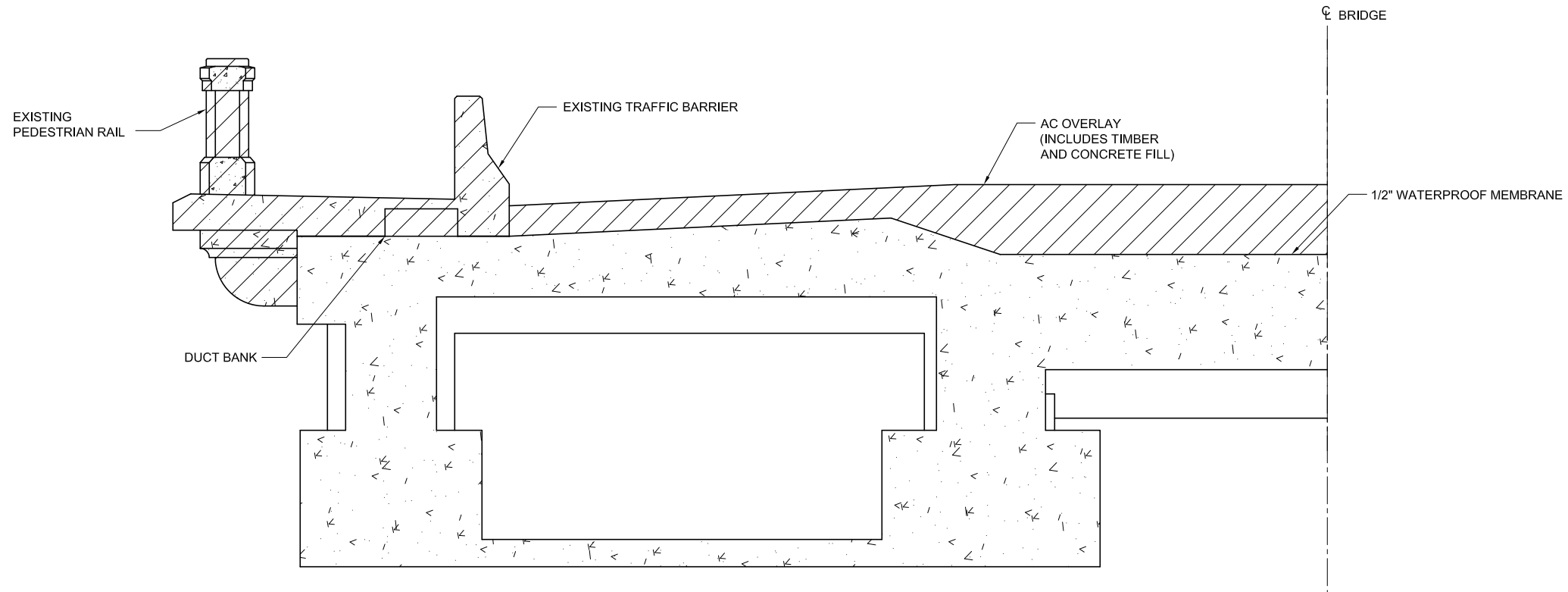
PARTIAL ELEVATION

WORK ITEMS

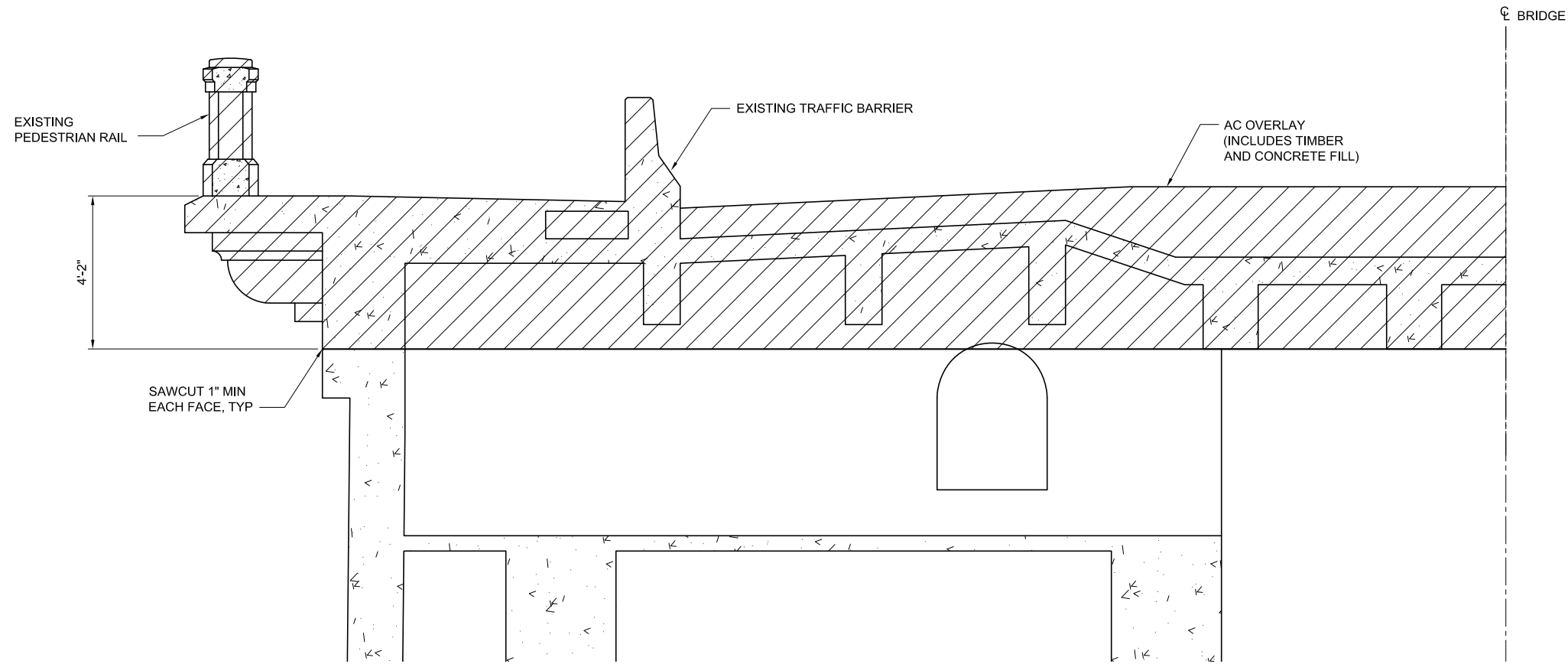
- (A) REMOVE EXISTING OVERLAY.
- (B) REMOVE EXISTING TRAFFIC BARRIER AND SIDEWALK.
- (C) REMOVE EXISTING PEDESTRIAN RAIL AND DECK OVERHANG.
- (D) REMOVE EXISTING PIER TOP.
- (E) REMOVE EXISTING DRAIN PIPE.
- (F) REMOVE EXISTING LIGHT POLE AND BASE (NOT SHOWN).
- (G) INSTALL NEW METAL GRATE FLOOR.
- (H) CONSTRUCT NEW PIER TOP.
- (I) REPAIR DELAMINATIONS IN FLOOR BEAMS & STRINGERS.
- (J) REPAIR DELAMINATIONS IN DECK SOFFIT.
- (K) REPAIR FLOOR BEAMS WHERE DESIGNATED.
- (L) INSTALL 6" REINFORCED CONCRETE OVERLAY.
- (M) CONSTRUCT NEW SIDEWALK.
- (N) NSTALL NEW TRAFFIC BARRIER.
- (O) INSTALL NEW PEDESTRIAN RAIL.
- (P) REPAIR DELAMINATIONS IN SPANDREL ARCHES AND COLUMNS.

Exhibit C-6  
Structure Plan  
Alternative B  
20 - Year Design Life  
With Expanded Sidewalks

Latah Bridge Rehabilitation Study



**TYPICAL DECK SECTION**



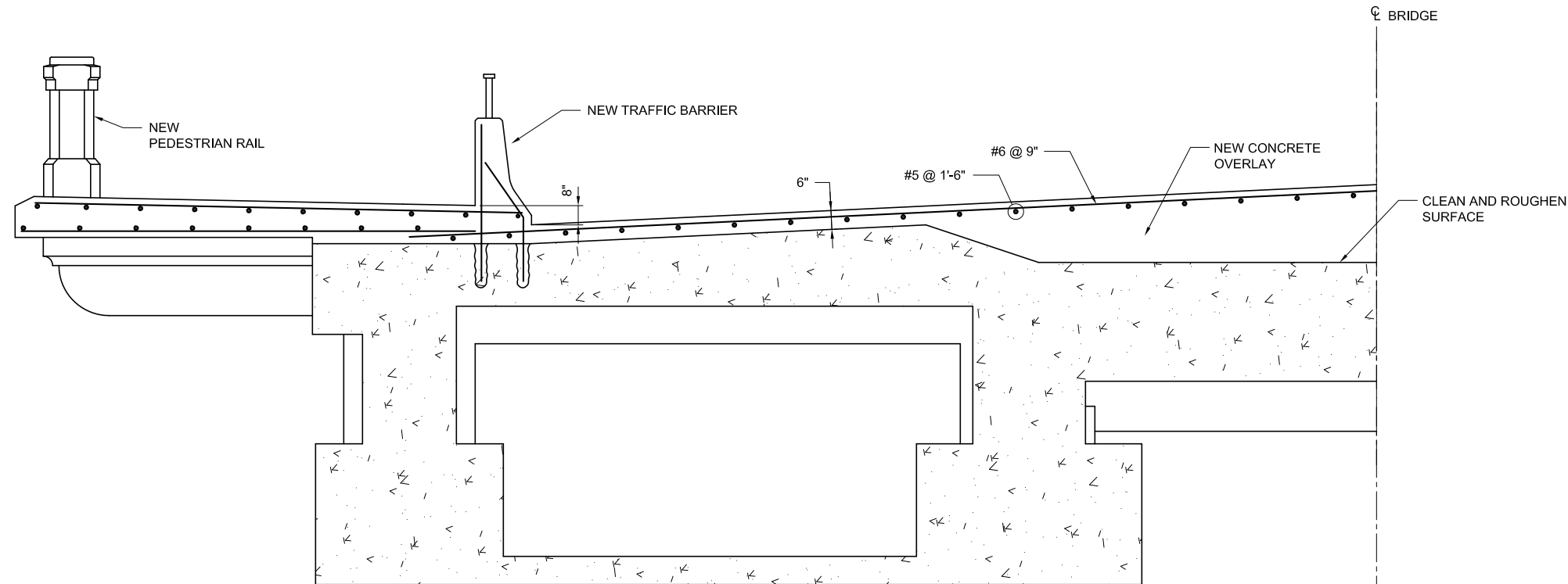
**TYPICAL PIER SECTION**

 DESIGNATED PORTION OF  
STRUCTURE TO BE REMOVED

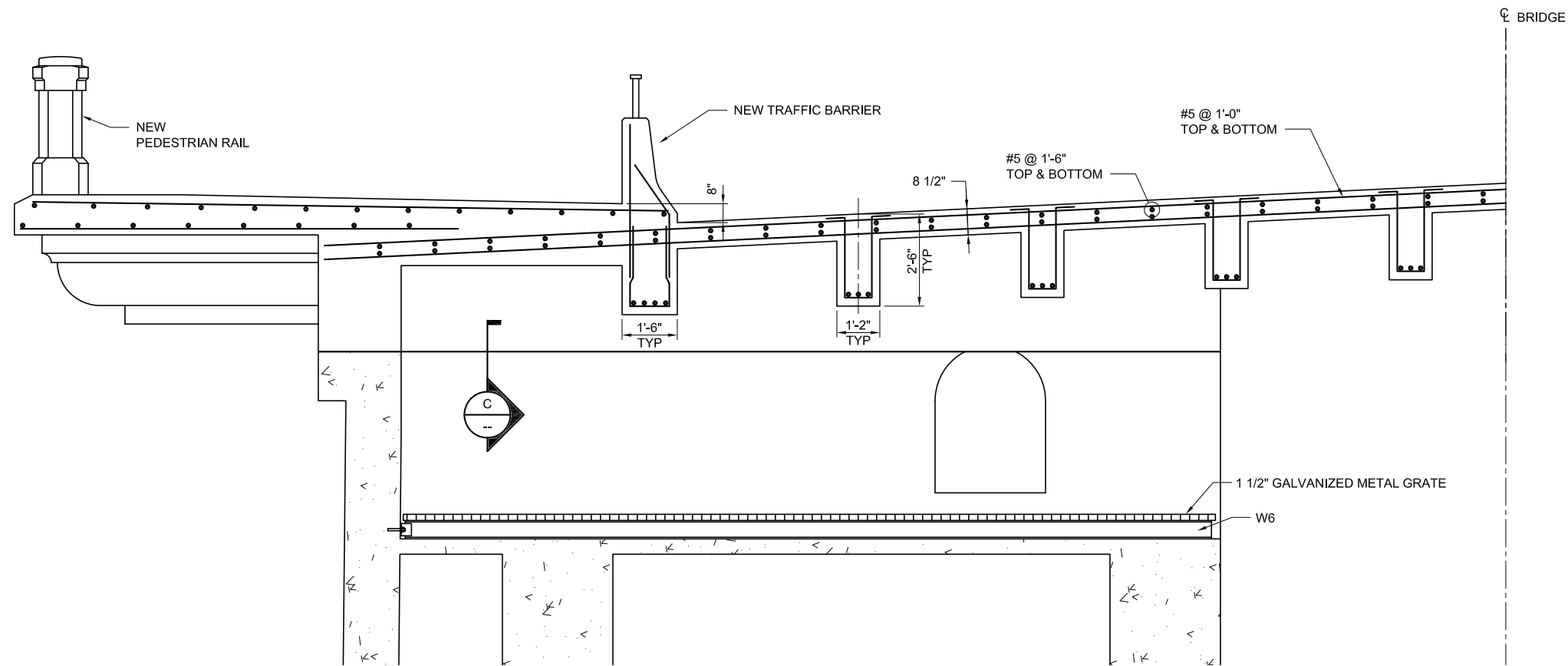
**Exhibit C-7**  
**Selective Removal Sections**  
**Alternative B**  
**20 - Year Design Life**  
**With Expanded Sidewalks**

Latah Bridge Rehabilitation Study

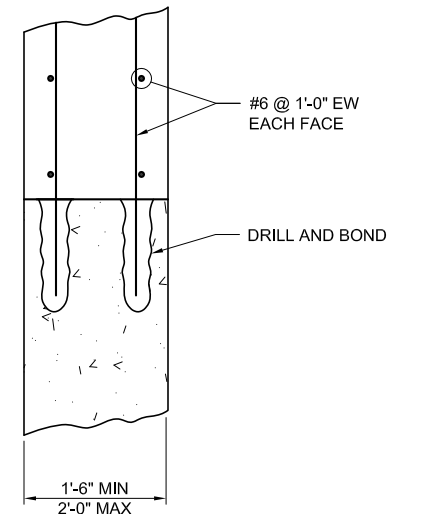
425825-Repairs-AltB-001.dwg November 09, 2012 - 3:26pm



**A** TYPICAL DECK SECTION



**B** TYPICAL PIER SECTION



**C** SECTION

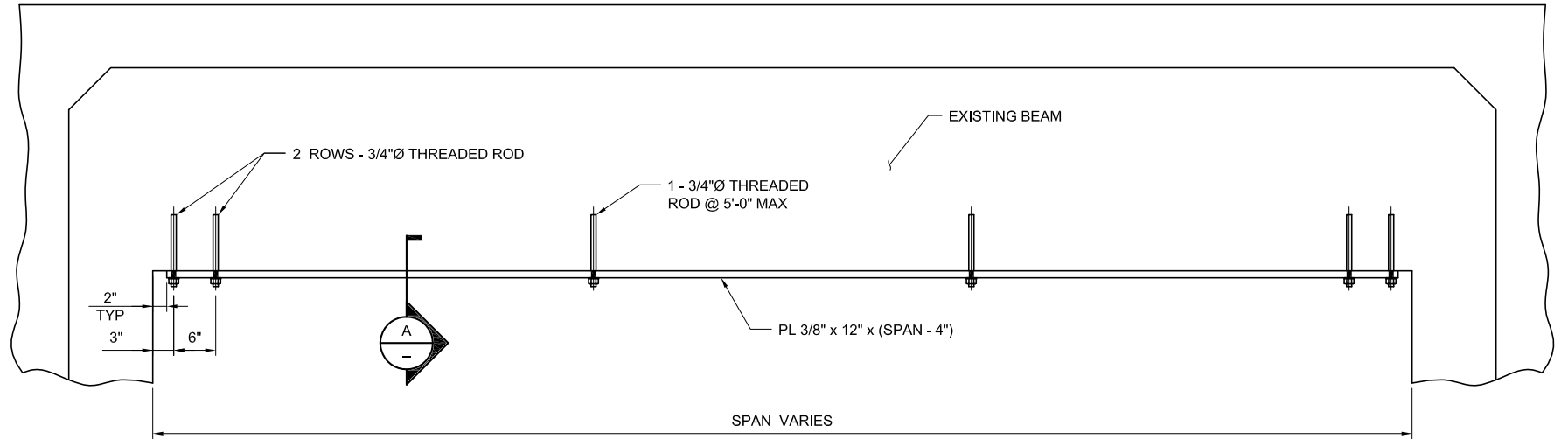
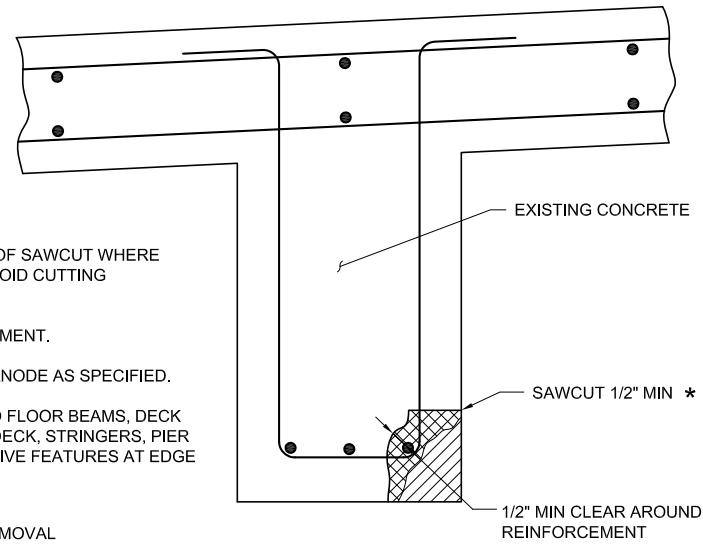
Exhibit C-8  
Repair Details No. 1  
Alternative B  
20 - Year Design Life  
With Expanded Sidewalks  
Latah Bridge Rehabilitation Study

## NOTES

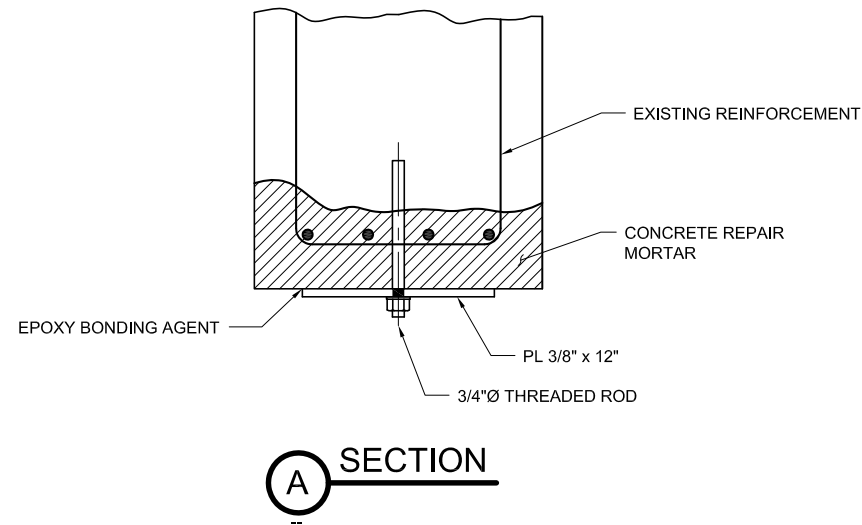
1. \* REDUCE DEPTH OF SAWCUT WHERE NECESSARY TO AVOID CUTTING REINFORCEMENT.
2. CLEAN REINFORCEMENT.
3. INSTALL PASSIVE ANODE AS SPECIFIED.
4. DETAIL APPLIES TO FLOOR BEAMS, DECK SOFFIT, EDGE OF DECK, STRINGERS, PIER FACES & DECORATIVE FEATURES AT EDGE OF DECK.



## CONCRETE REPAIR DETAIL



## BEAM REPAIR DETAIL

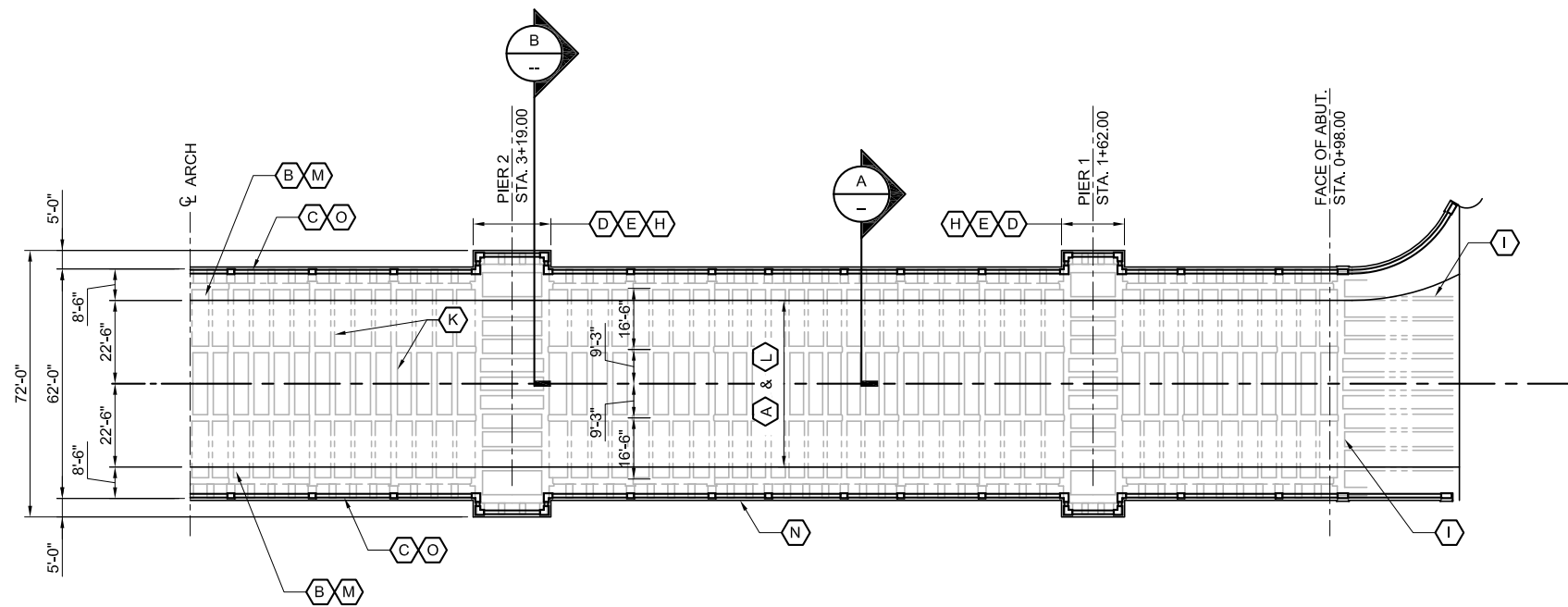


## NOTES

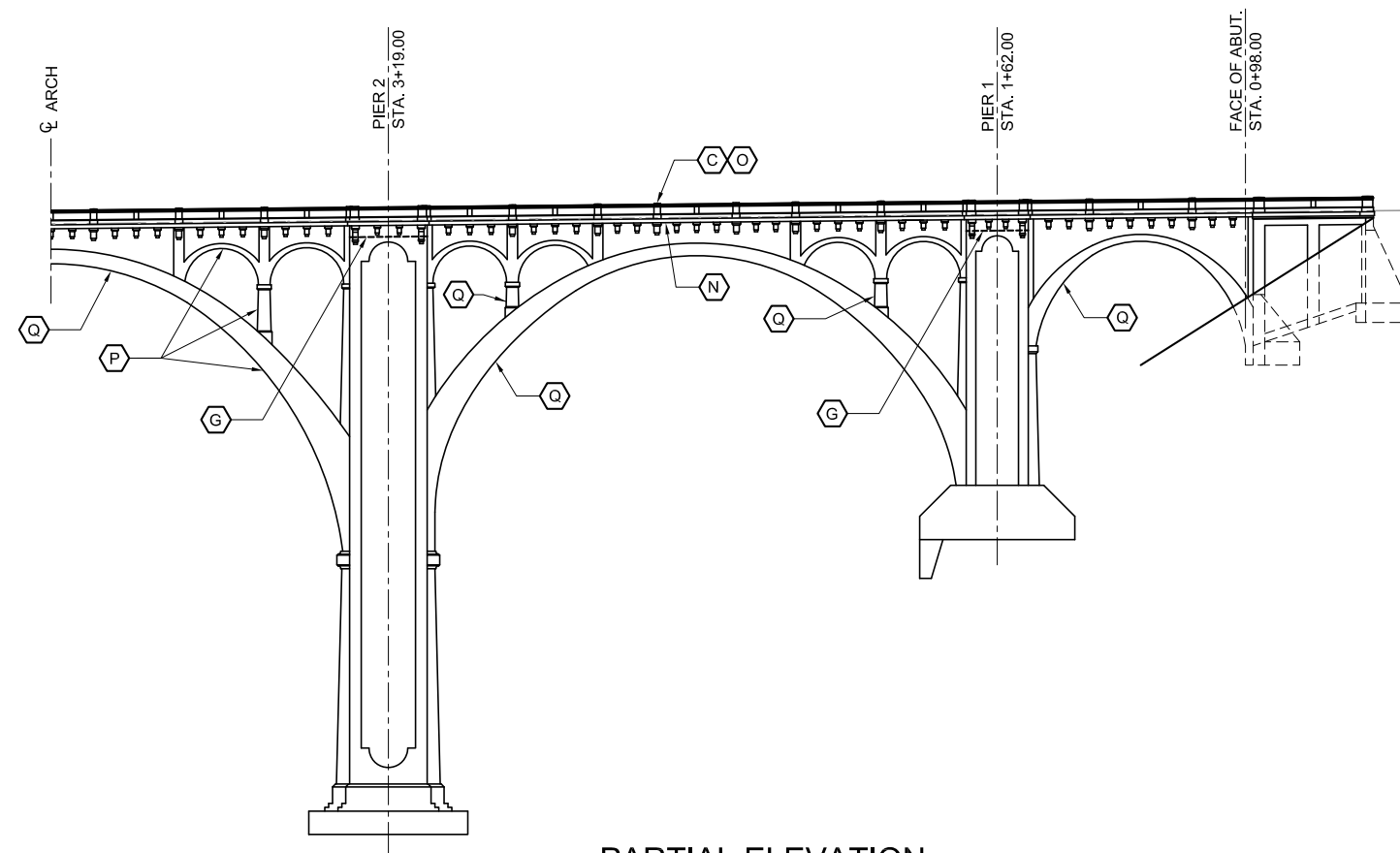
1. SEE CONCRETE REPAIR DETAIL FOR INFORMATION NOT SHOWN.
2. THREADED ROD, NUT & WASHER TO BE EPOXY COATED.
3. EPOXY BONDING AGENT TO BE SIKADUR 32 OR EQUIVALENT.
4. PAINT PLATE AFTER INSTALLATION.
5. INSTALL PLATE AFTER REMOVAL OF EXISTING OVERLAY & PRIOR TO INSTALLATION OF NEW CONCRETE OVERLAY.

Exhibit C-9  
Repair Details No. 2  
Alternative B  
20 - Year Design Life  
With Expanded Sidewalks

Latah Bridge Rehabilitation Study



**PARTIAL DECK PLAN**

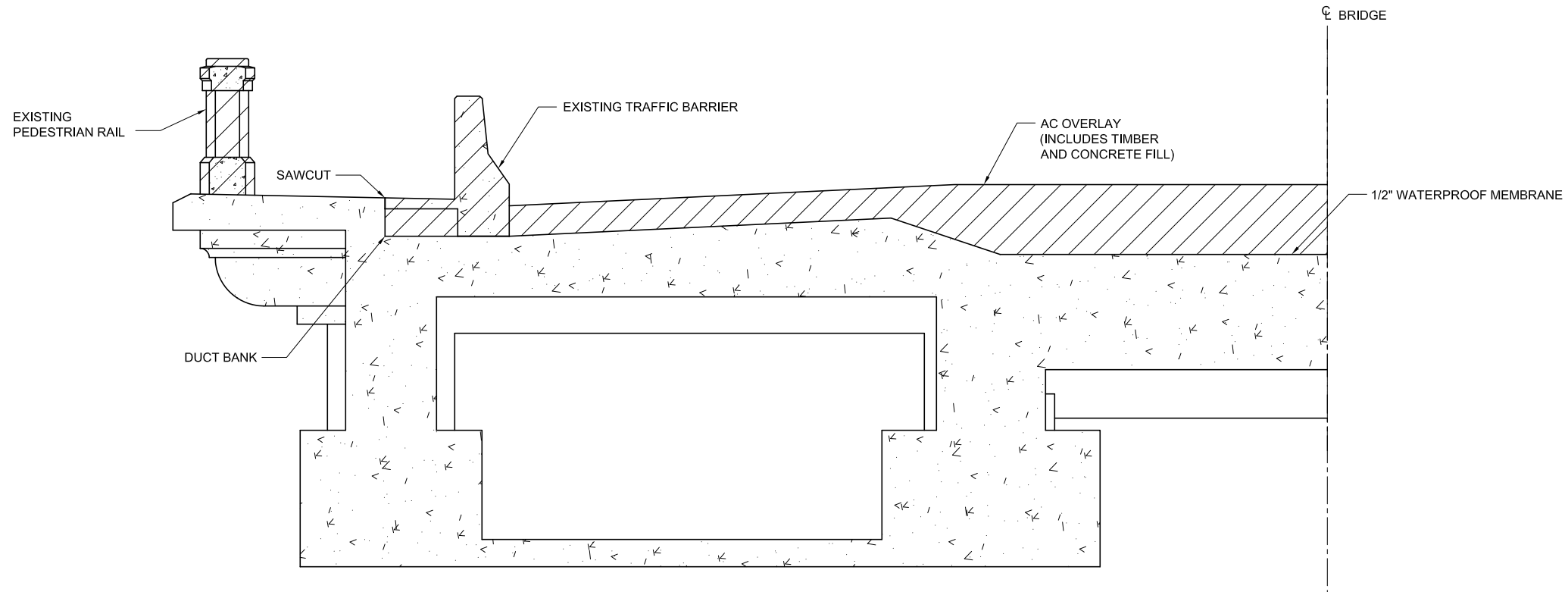


**PARTIAL ELEVATION**

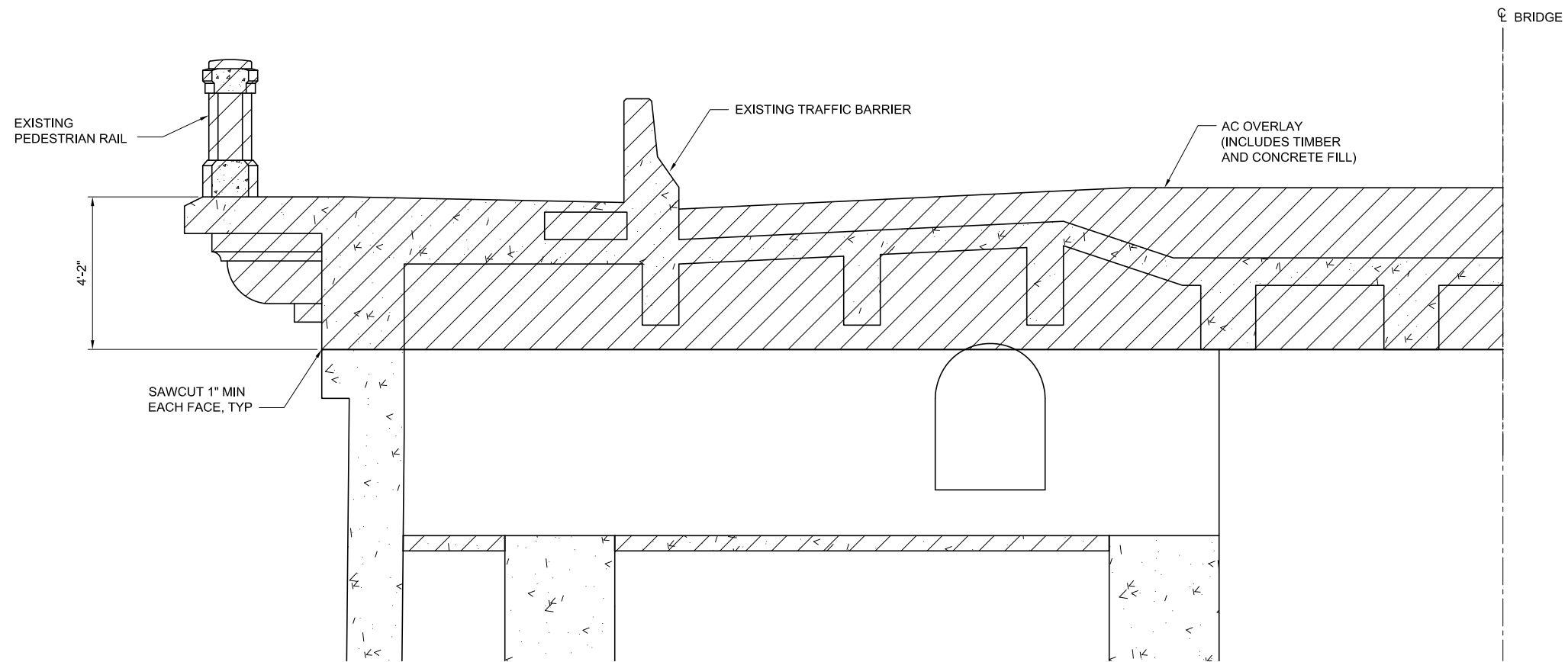
**WORK ITEMS**

- (A) REMOVE EXISTING OVERLAY.
- (B) REMOVE EXISTING TRAFFIC BARRIER AND PORTION OF SIDEWALK.
- (C) REMOVE EXISTING PEDESTRIAN RAIL.
- (D) REMOVE EXISTING PIER TOP.
- (E) REMOVE EXISTING DRAIN PIPE.
- (F) REMOVE EXISTING LIGHT POLE AND BASE (NOT SHOWN).
- (G) REMOVE EXISTING CONCRETE FLOOR AND INSTALL NEW METAL GRATE FLOOR.
- (H) CONSTRUCT NEW PIER TOP.
- (I) REPAIR DELAMINATIONS IN FLOOR BEAMS & STRINGERS.
- (J) REPAIR DELAMINATIONS IN DECK SOFFIT.
- (K) REPAIR FLOOR BEAMS WHERE DESIGNATED.
- (L) INSTALL 6" REINFORCED CONCRETE OVERLAY.
- (M) INSTALL NEW TRAFFIC BARRIER.
- (N) REPAIR DELAMINATED DECK AT EDGE.
- (O) INSTALL NEW PEDESTRIAN RAIL.
- (P) REPAIR DELAMINATIONS IN SPANDREL ARCHES, COLUMNS AND ARCHES.
- (Q) PERFORM ELECTROCHEMICAL CHLORIDE EXTRACTION AT EXTERIOR ARCH RIBS AND SPANDREL COLUMNS.

Exhibit C-10  
Structure Plan  
Alternative C  
Long - Term Design Life  
Latah Bridge Rehabilitation Study



**(A) TYPICAL DECK SECTION**

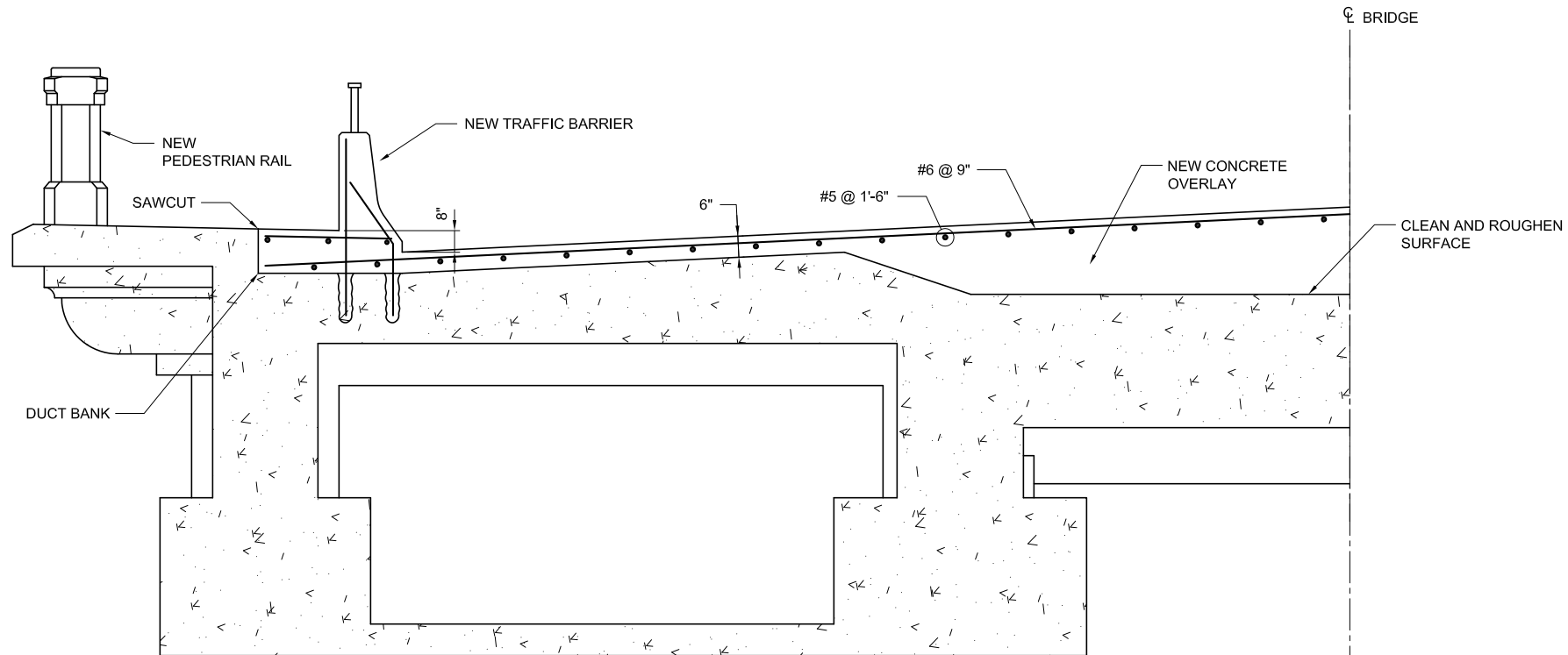


**(B) TYPICAL PIER SECTION**

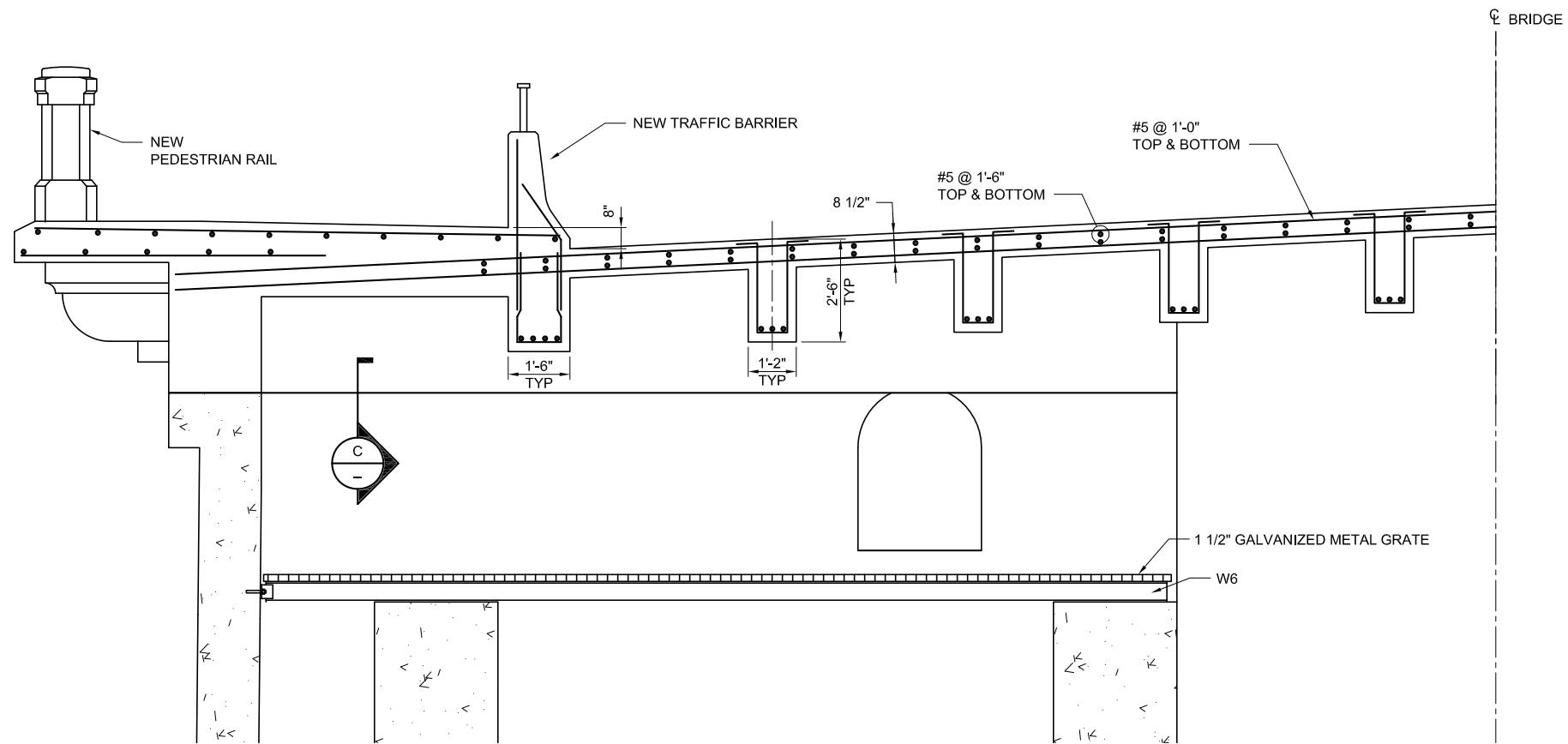
 DESIGNATED PORTION OF STRUCTURE TO BE REMOVED

Exhibit C-11  
 Selective Removal Sections  
 Alternative C  
 Long - Term Design Life  
 Latah Bridge Rehabilitation Study

425825-425825-Repairs-AltC-001.dwg November 09, 2012 3:34pm



**A** TYPICAL DECK SECTION



**B** TYPICAL PIER SECTION

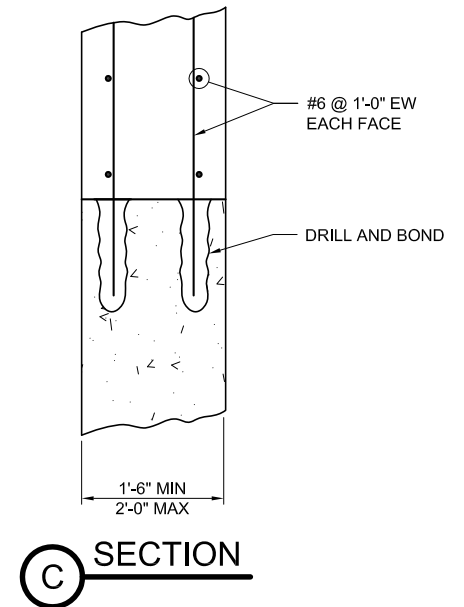


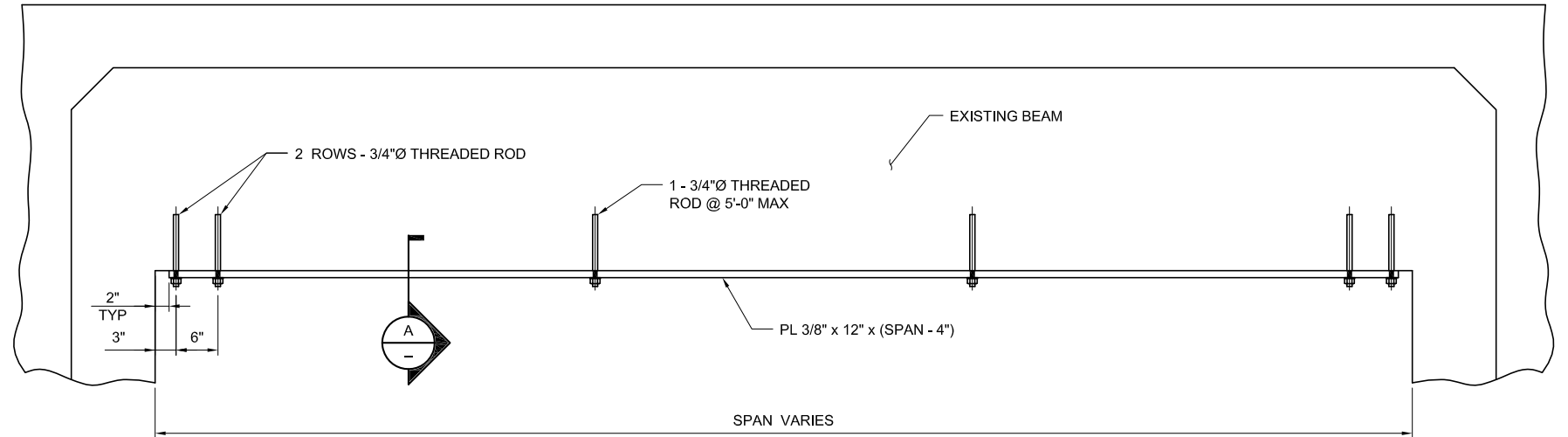
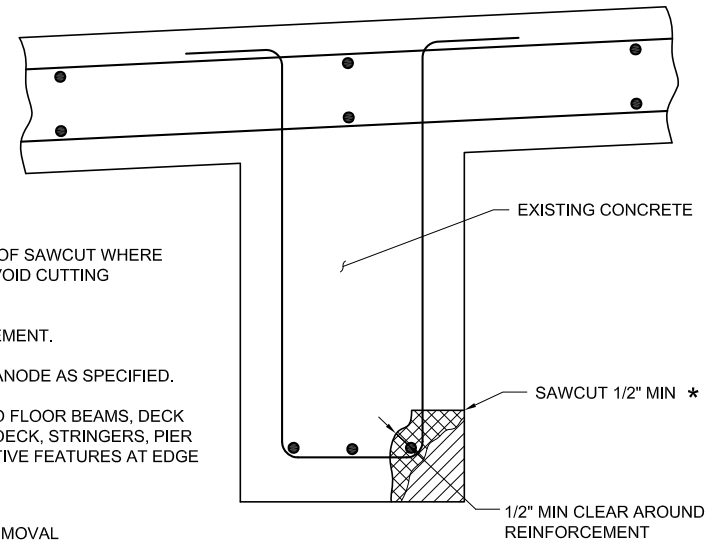
Exhibit C-12  
Repair Details No. 1  
Alternative C  
Long - Term Design Life  
Latah Bridge Rehabilitation Study

## NOTES

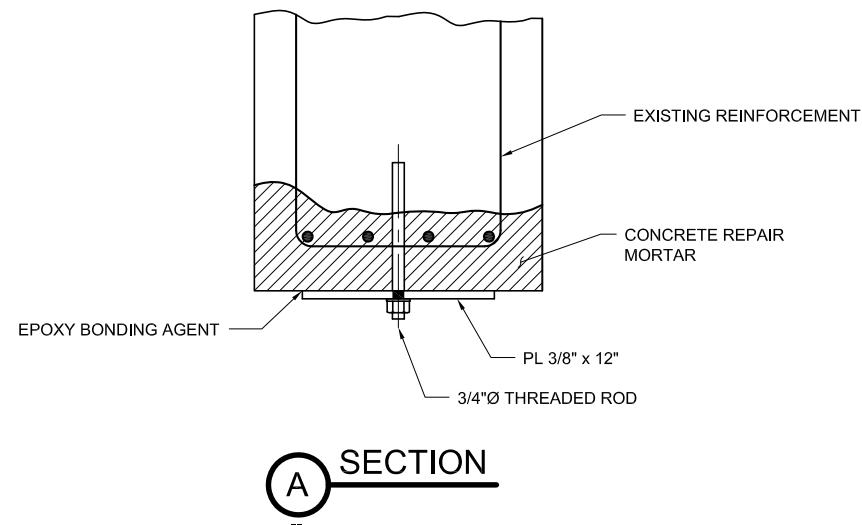
1. \* REDUCE DEPTH OF SAWCUT WHERE NECESSARY TO AVOID CUTTING REINFORCEMENT.
2. CLEAN REINFORCEMENT.
3. INSTALL PASSIVE ANODE AS SPECIFIED.
4. DETAIL APPLIES TO FLOOR BEAMS, DECK SOFFIT, EDGE OF DECK, STRINGERS, PIER FACES & DECORATIVE FEATURES AT EDGE OF DECK.



## CONCRETE REPAIR DETAIL

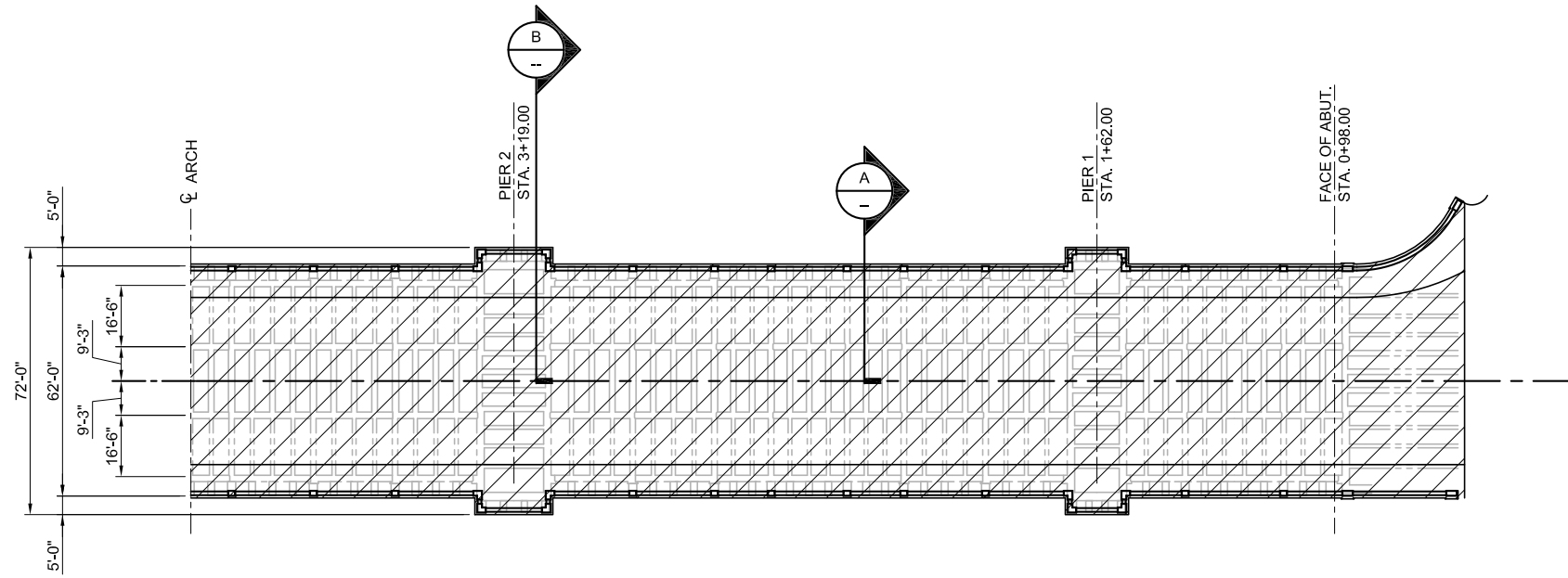


## BEAM REPAIR DETAIL

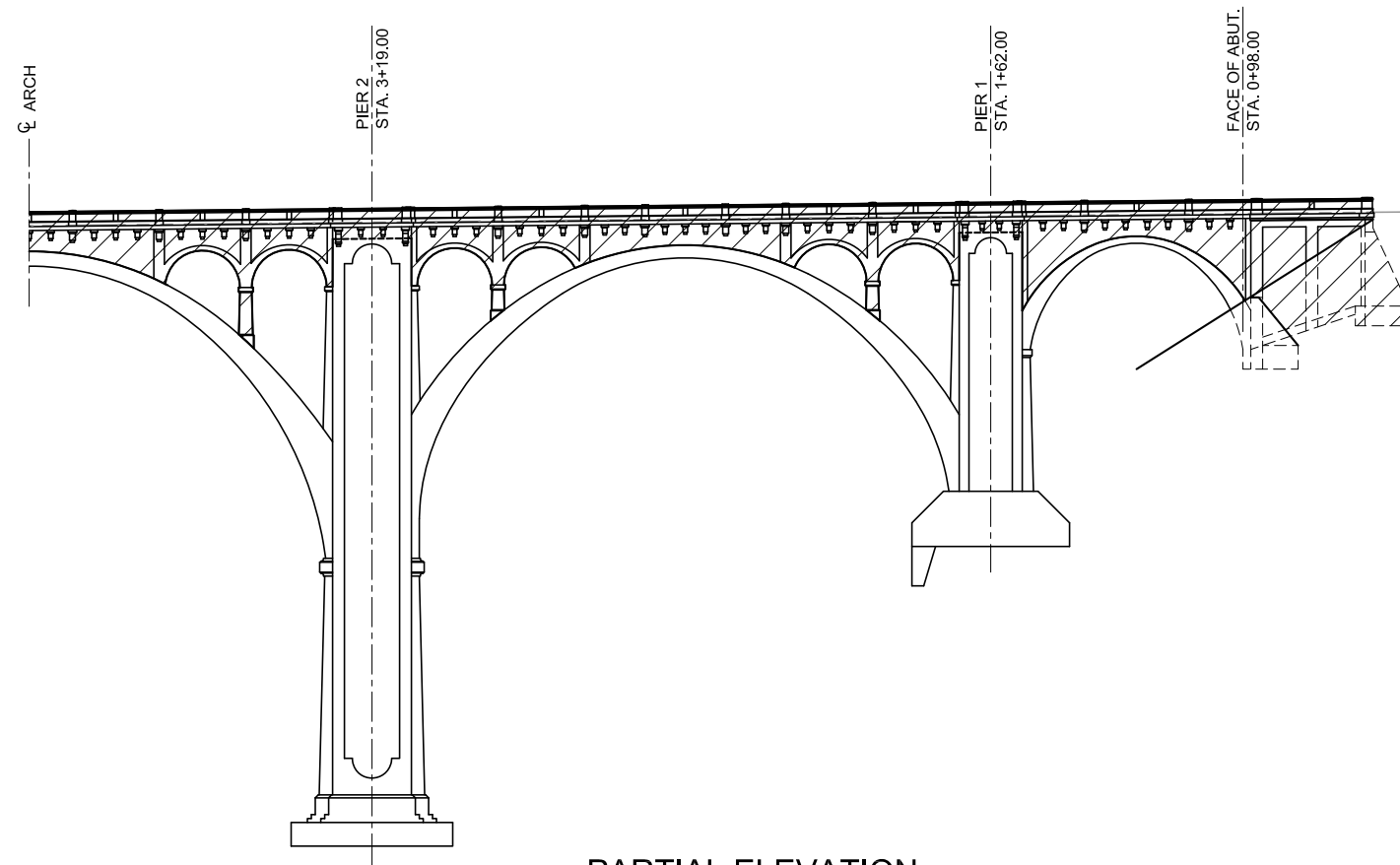


## NOTES

1. SEE CONCRETE REPAIR DETAIL FOR INFORMATION NOT SHOWN.
2. THREADED ROD, NUT & WASHER TO BE EPOXY COATED.
3. EPOXY BONDING AGENT TO BE SIKADUR 32 OR EQUIVALENT.
4. PAINT PLATE AFTER INSTALLATION.
5. INSTALL PLATE AFTER REMOVAL OF EXISTING OVERLAY & PRIOR TO INSTALLATION OF NEW CONCRETE OVERLAY.



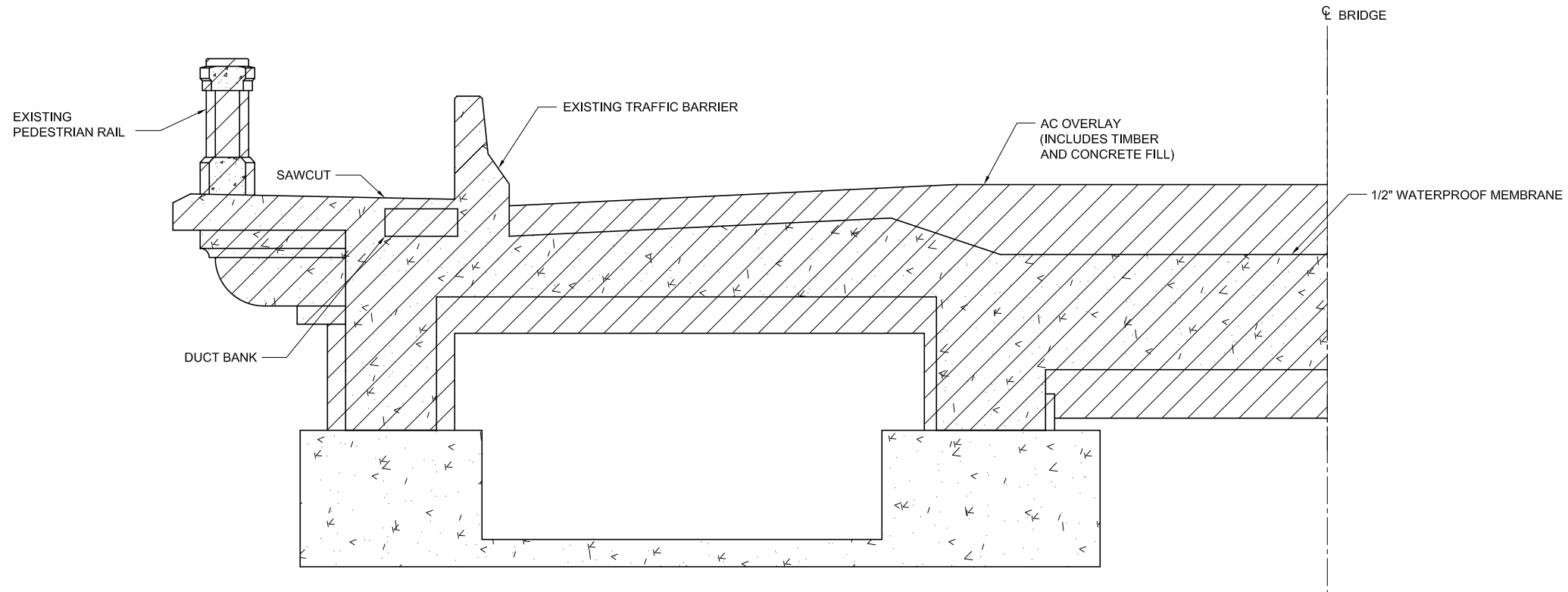
PARTIAL DECK PLAN



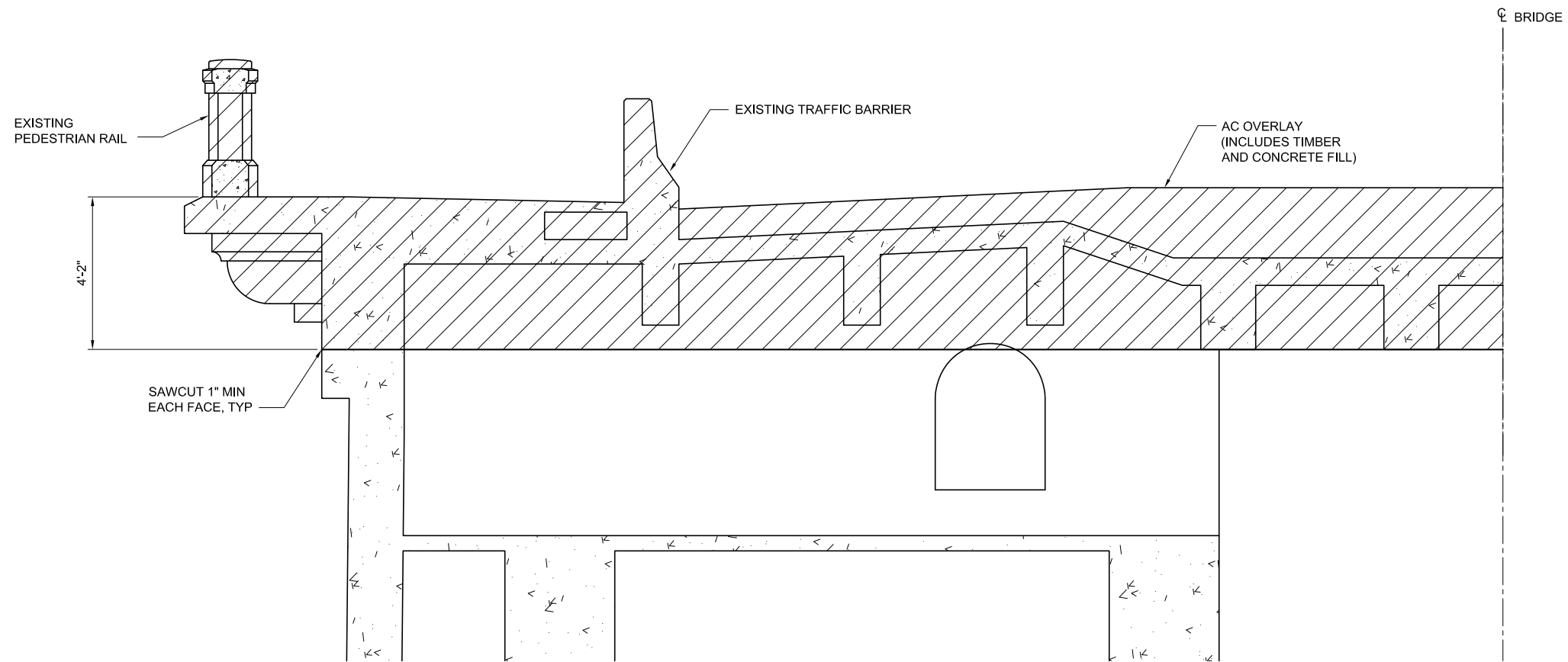
PARTIAL ELEVATION

 DESIGNATED PORTION OF  
STRUCTURE TO BE REMOVED

Exhibit C-14  
Selective Removal Elevation  
Alternative D  
4 Lanes with Bike Lanes  
Latah Bridge Rehabilitation Study



**(A) TYPICAL DECK SECTION**



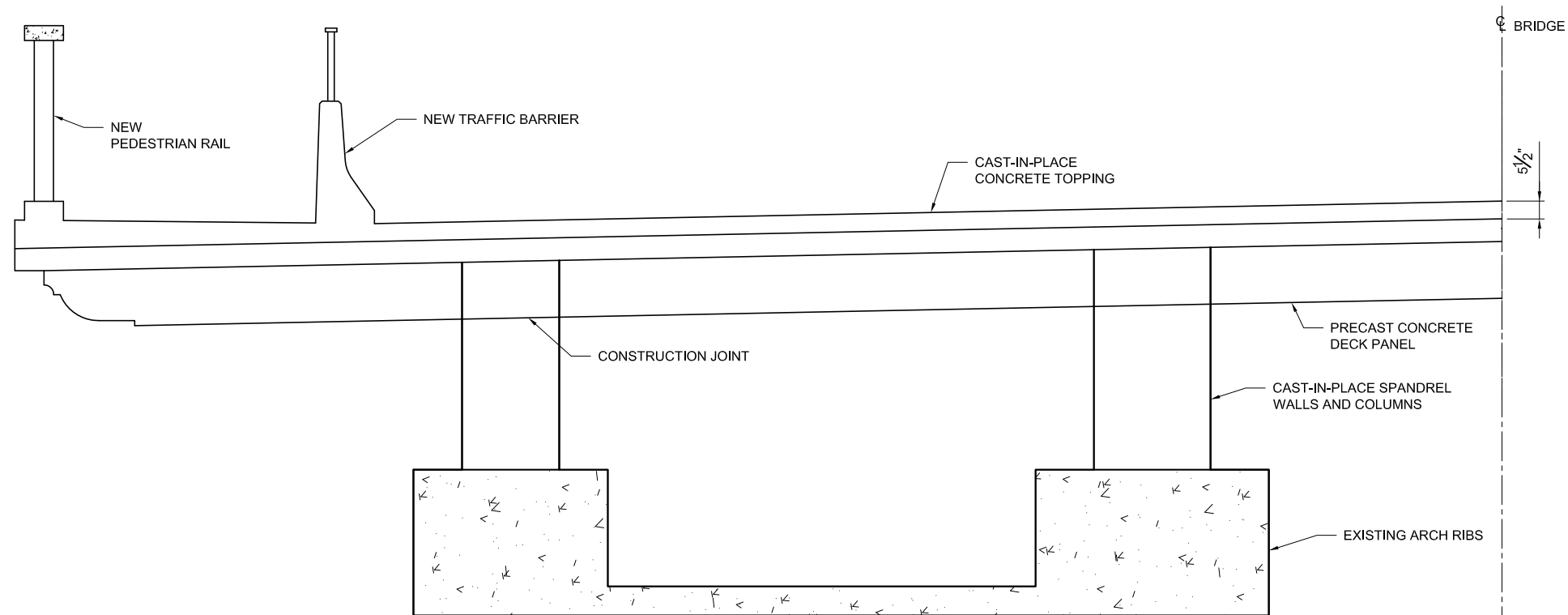
**(B) TYPICAL PIER SECTION**

 DESIGNATED PORTION OF  
STRUCTURE TO BE REMOVED

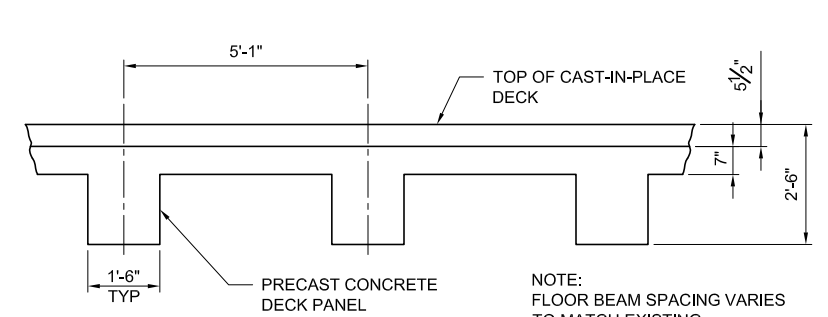
**Exhibit C-15**  
**Selective Removal Sections**  
**Alternative D**  
**4 Lanes with Bike Lanes**  
 Latah Bridge Rehabilitation Study



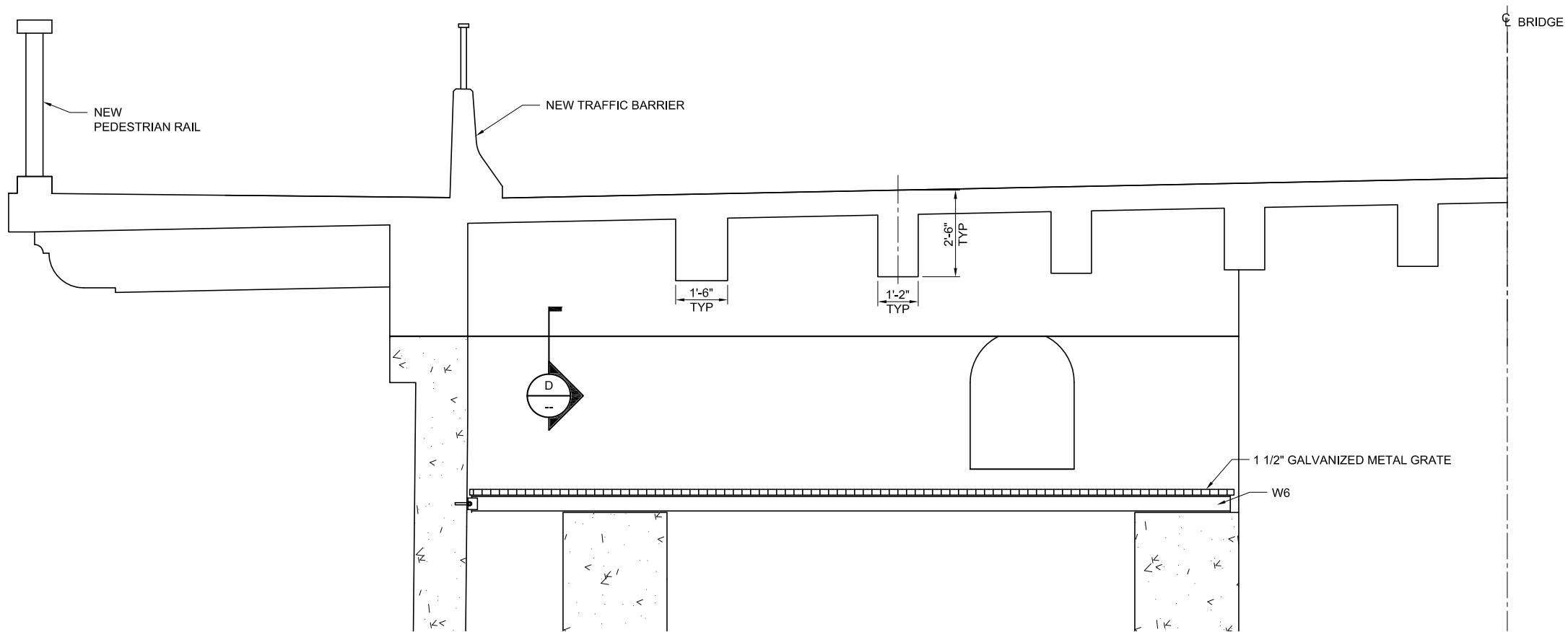
**CH2MHILL®**



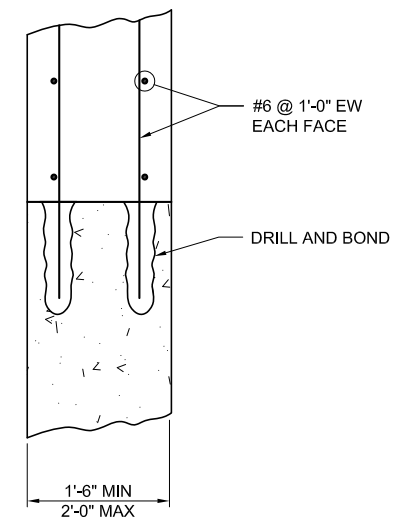
**A** TYPICAL DECK SECTION



**C** SECTION

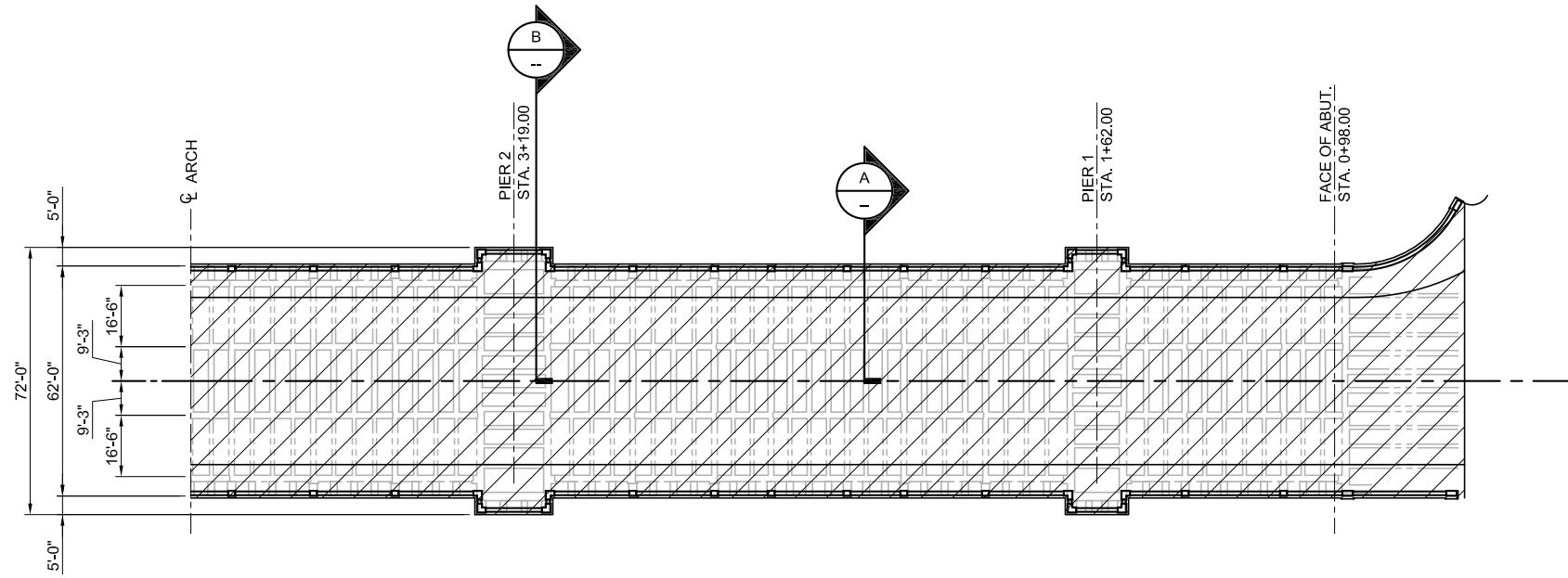


**B** TYPICAL PIER SECTION

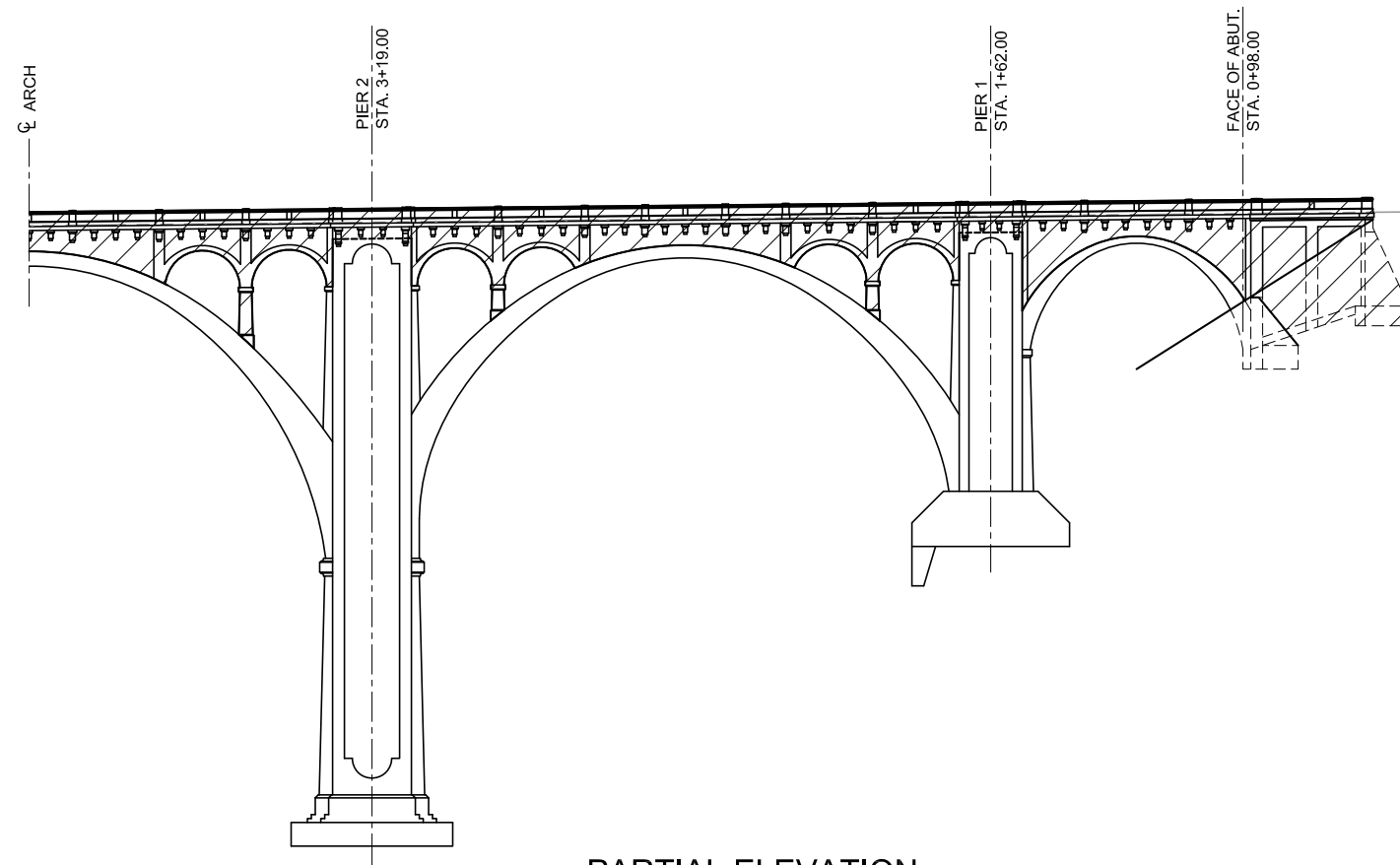


**D** SECTION

Exhibit C-17  
Superstructure  
Alternative D  
4 Lanes with Bike Lanes  
Latah Bridge Rehabilitation Study



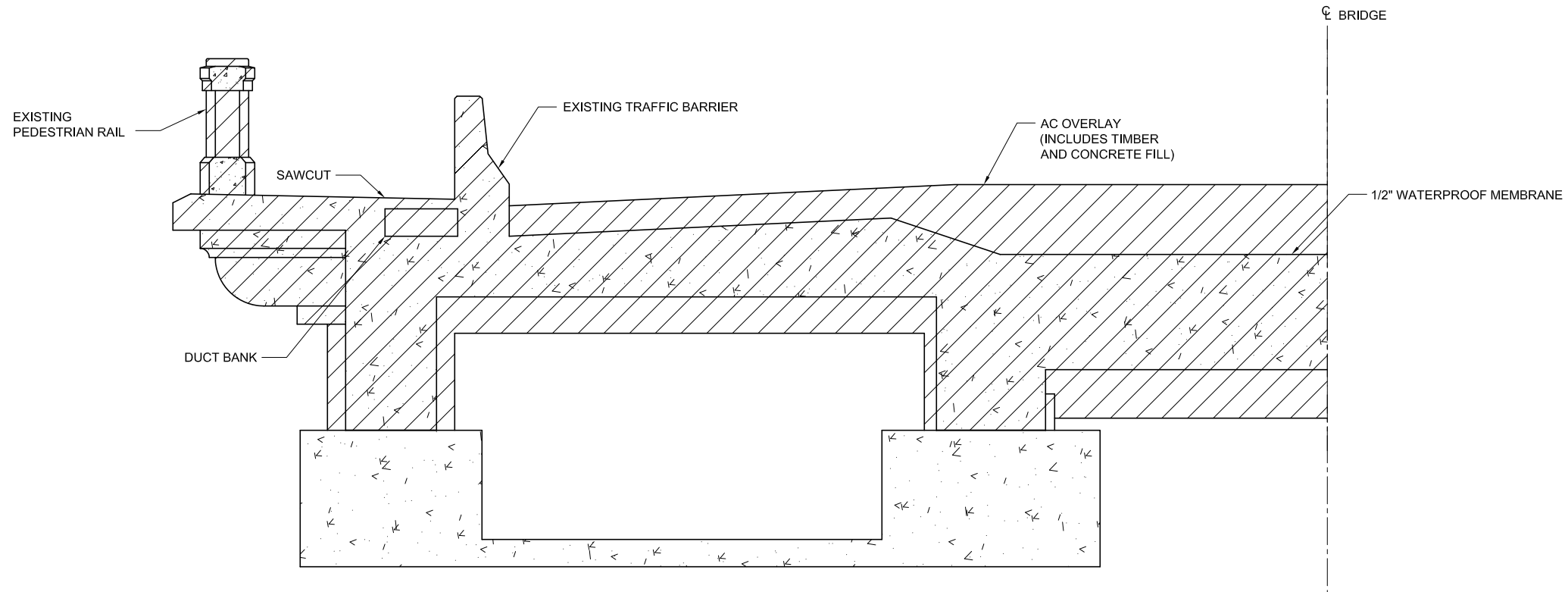
PARTIAL DECK PLAN



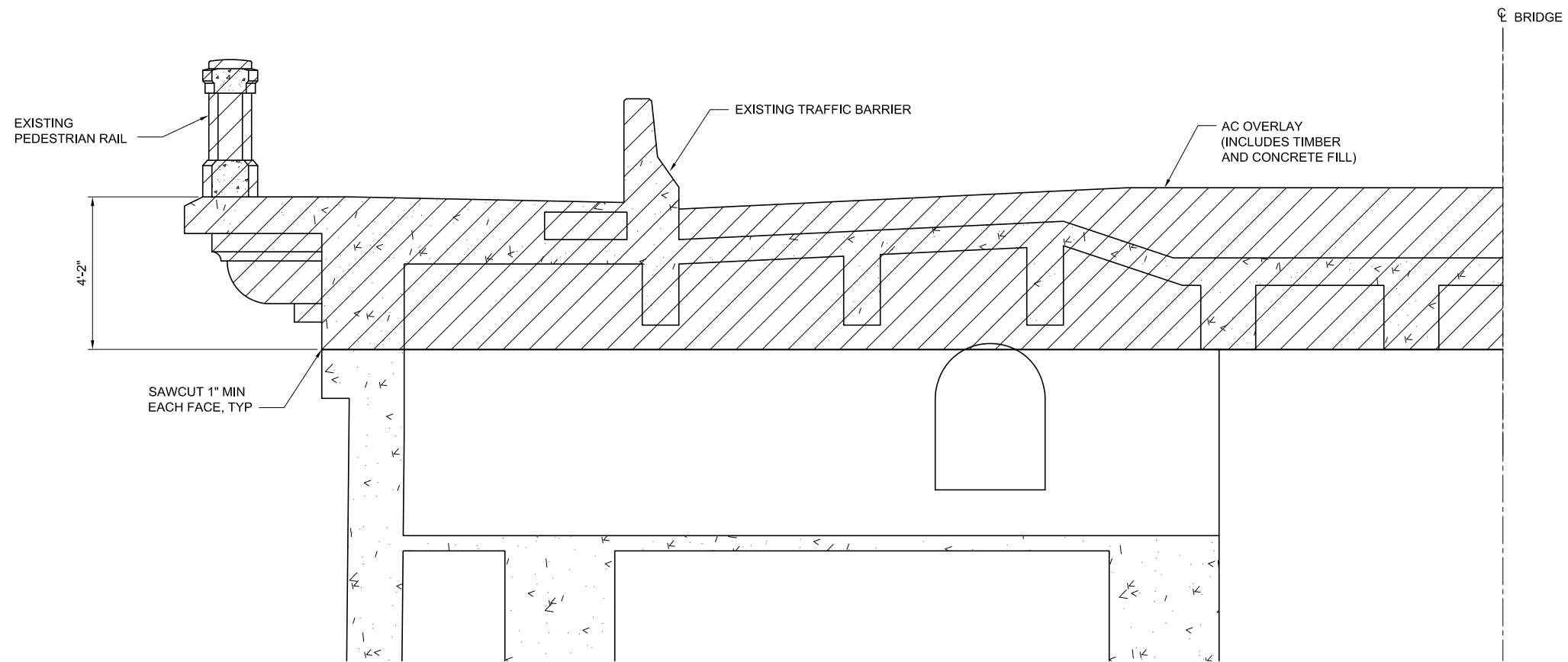
PARTIAL ELEVATION

 DESIGNATED PORTION OF  
STRUCTURE TO BE REMOVED

Exhibit C-18  
Selective Removal Elevation  
Alternative E  
4 Lanes with Light Rail (LRT)  
Latah Bridge Rehabilitation Study



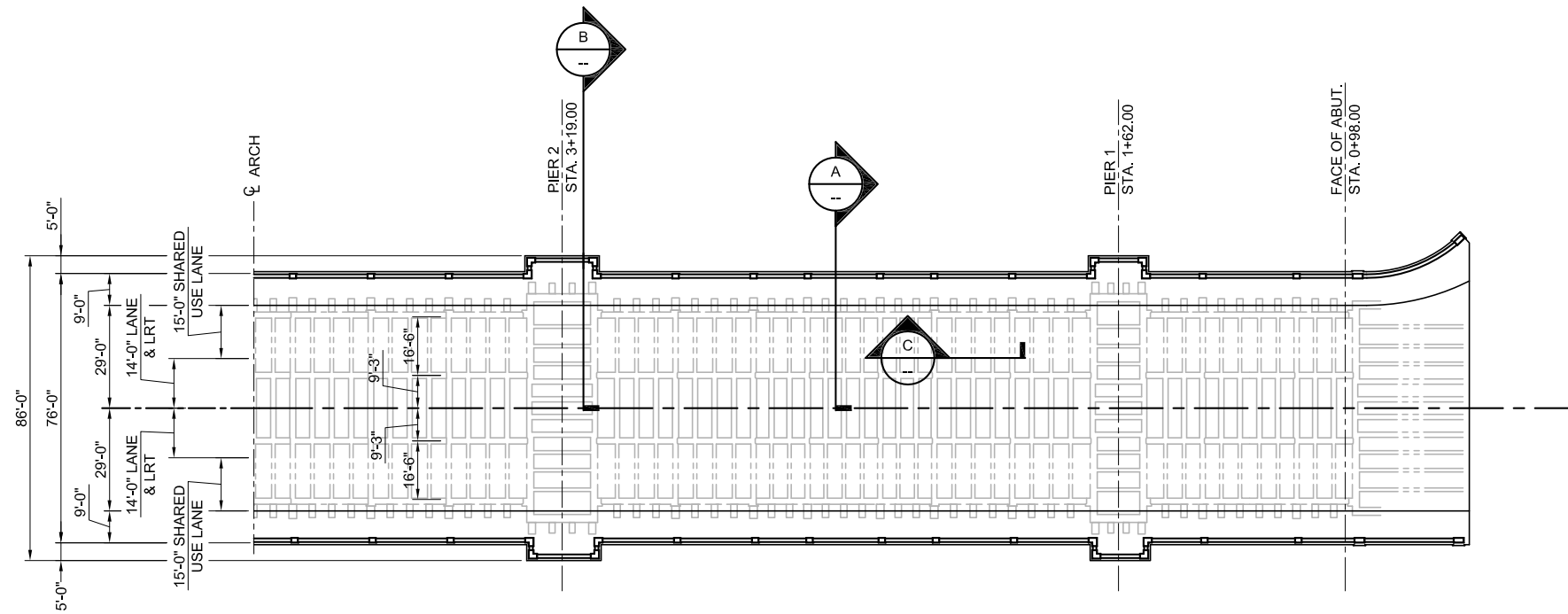
**(A) TYPICAL DECK SECTION**



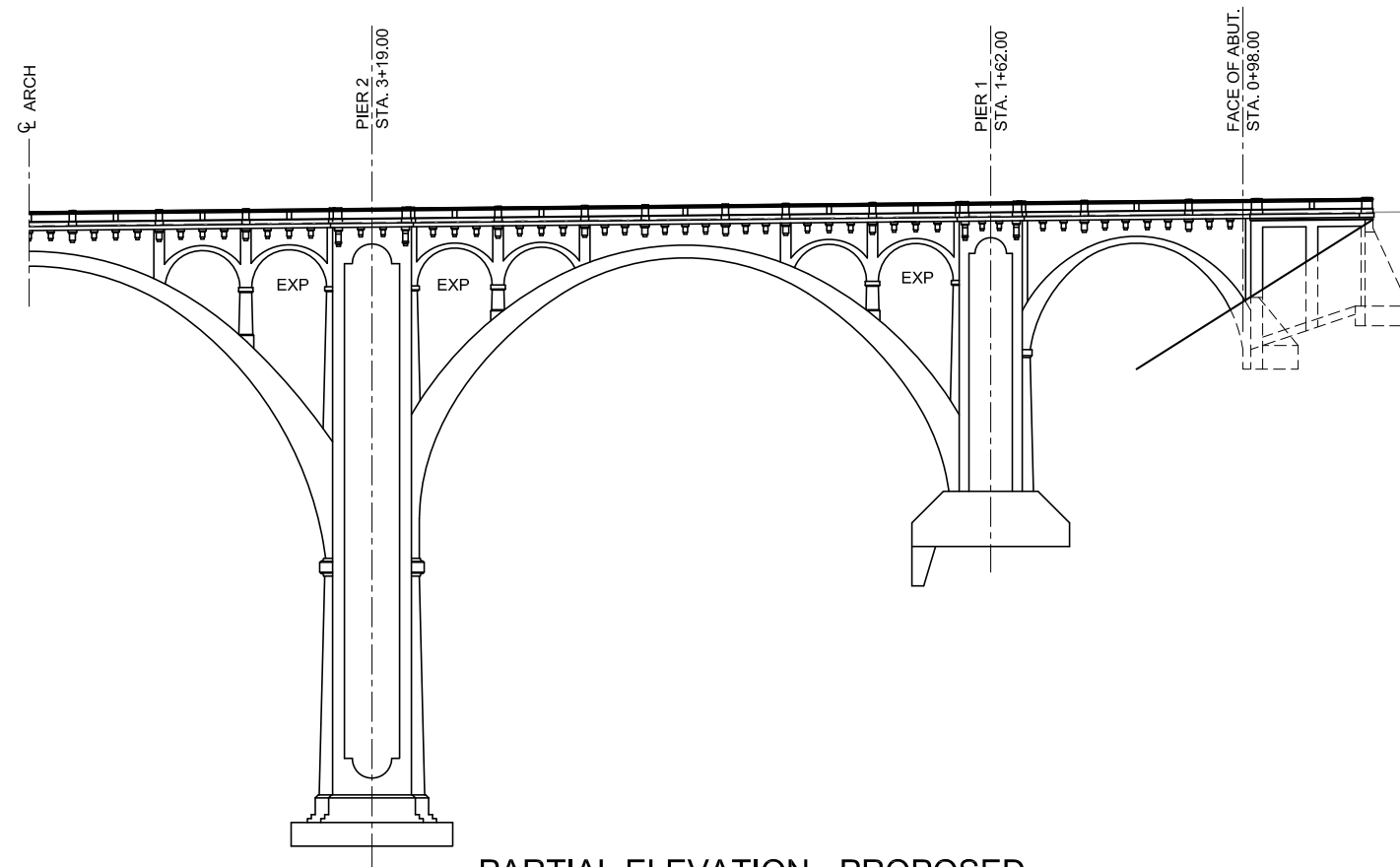
**(B) TYPICAL PIER SECTION**

 DESIGNATED PORTION OF STRUCTURE TO BE REMOVED

Exhibit C-19  
 Selective Removal Sections  
 Alternative E  
 4 Lanes with Light Rail (LRT)  
 Latah Bridge Rehabilitation Study

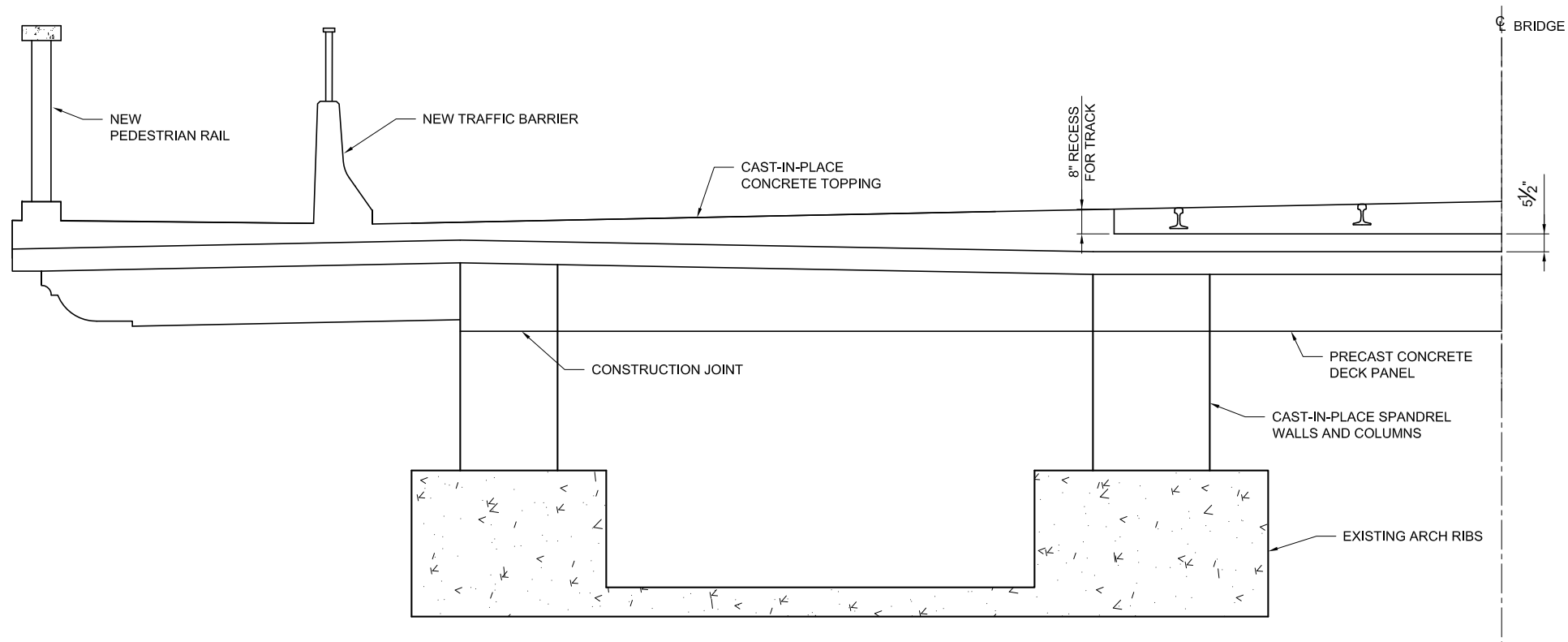


PARTIAL DECK PLAN - PROPOSED

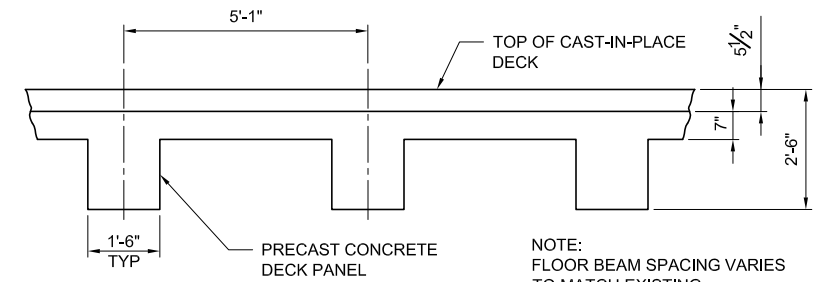


PARTIAL ELEVATION - PROPOSED

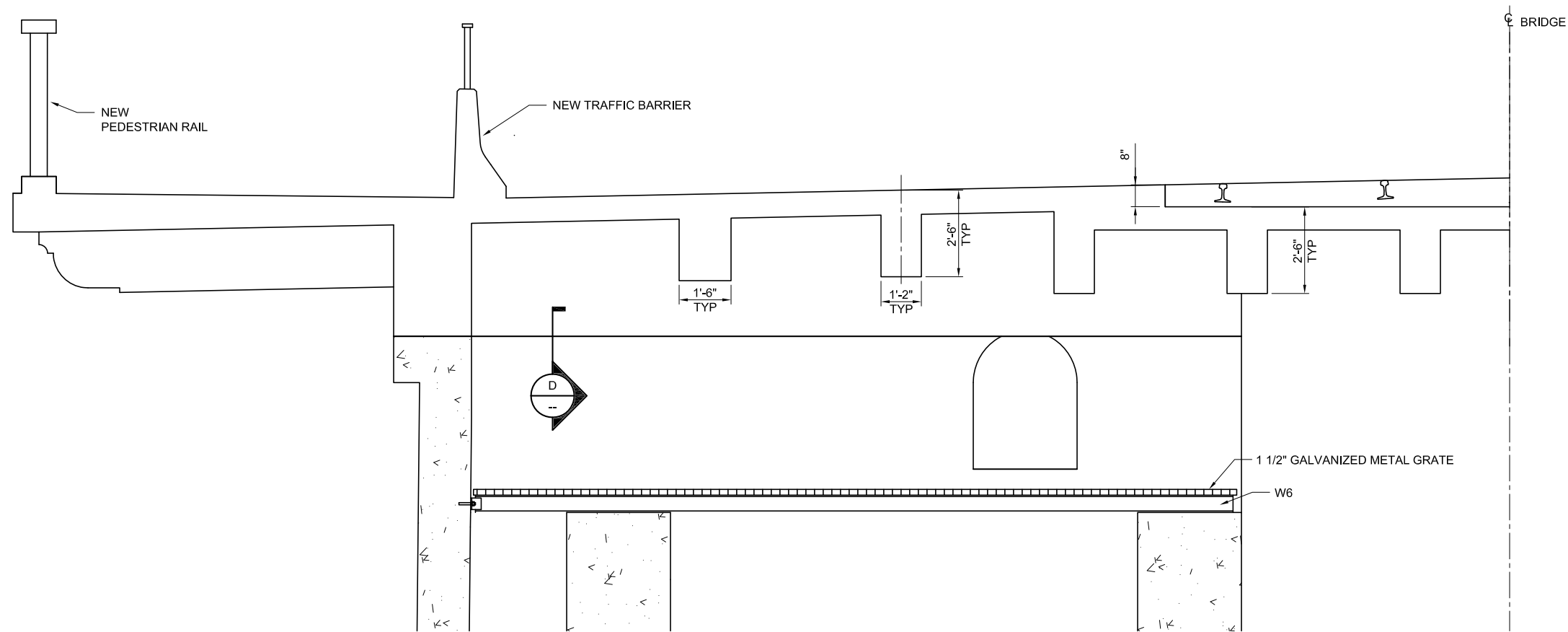
Exhibit C-20  
Structure Plan  
Alternative E  
4 Lanes with Light Rail (LRT)  
Latah Bridge Rehabilitation Study



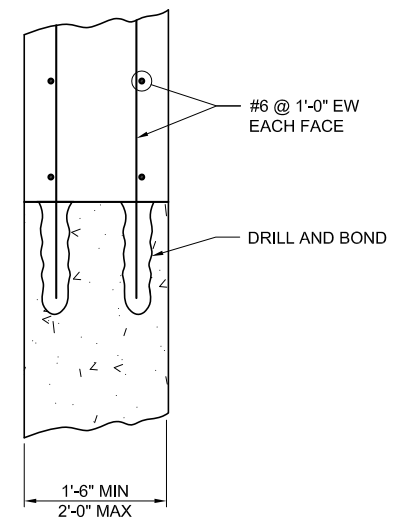
**(A) TYPICAL DECK SECTION**



**(C) SECTION**



**(B) TYPICAL PIER SECTION**



**(D) SECTION**

Exhibit C-21  
Superstructure  
Alternative E  
4 Lanes with Light Rail (LRT)  
Latah Bridge Rehabilitation Study