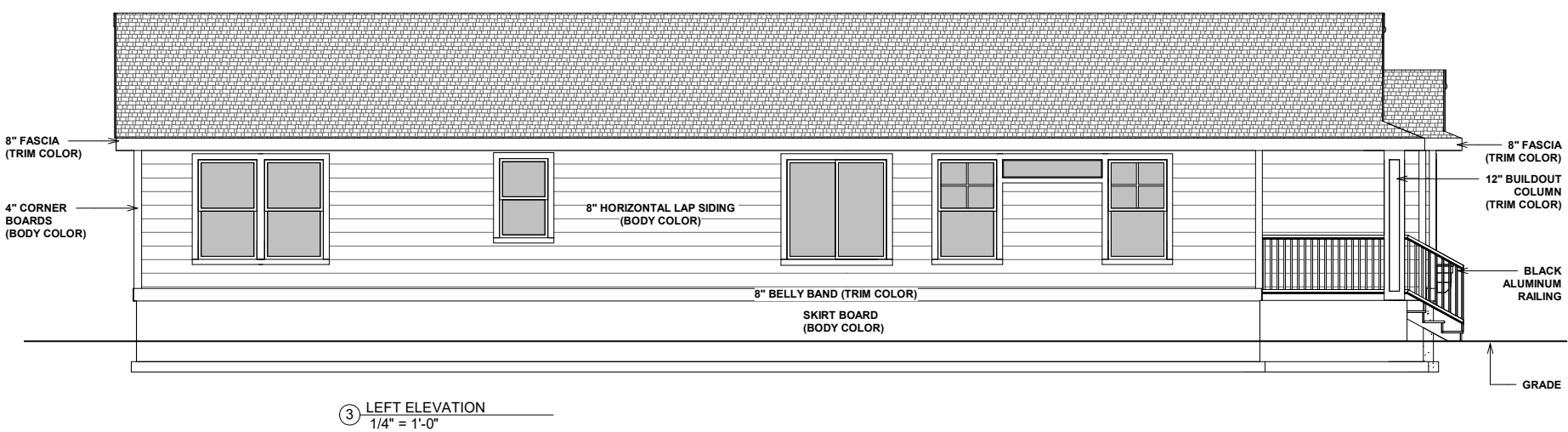
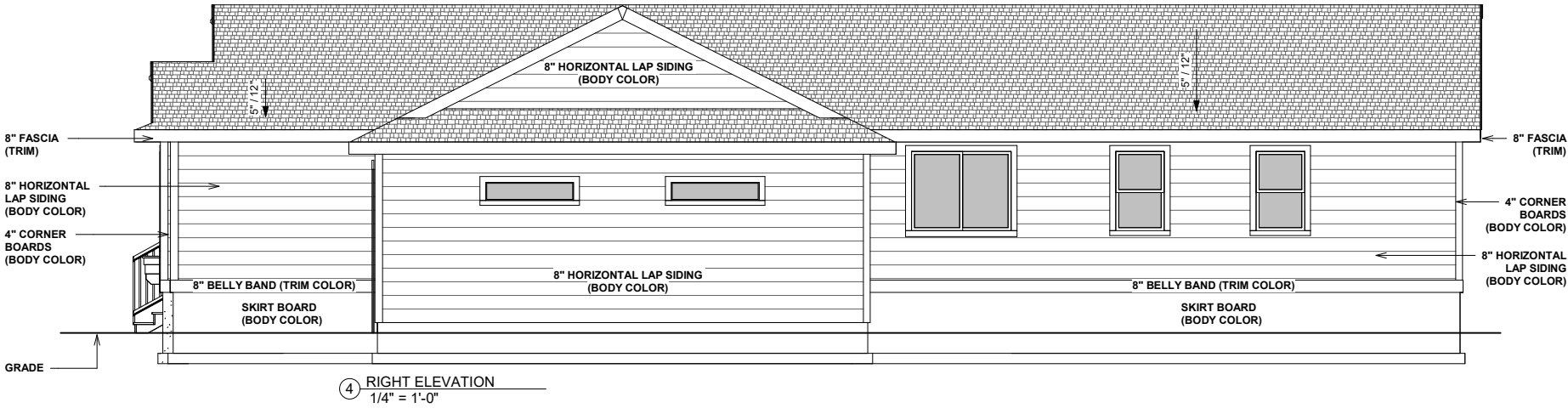
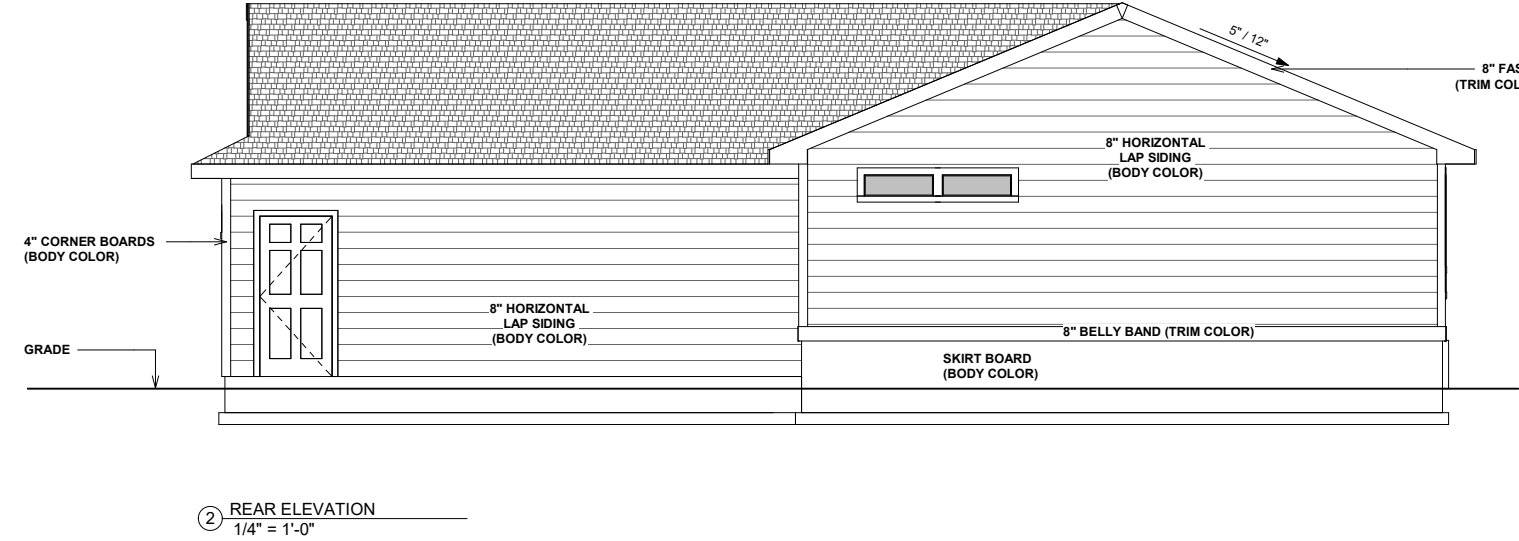
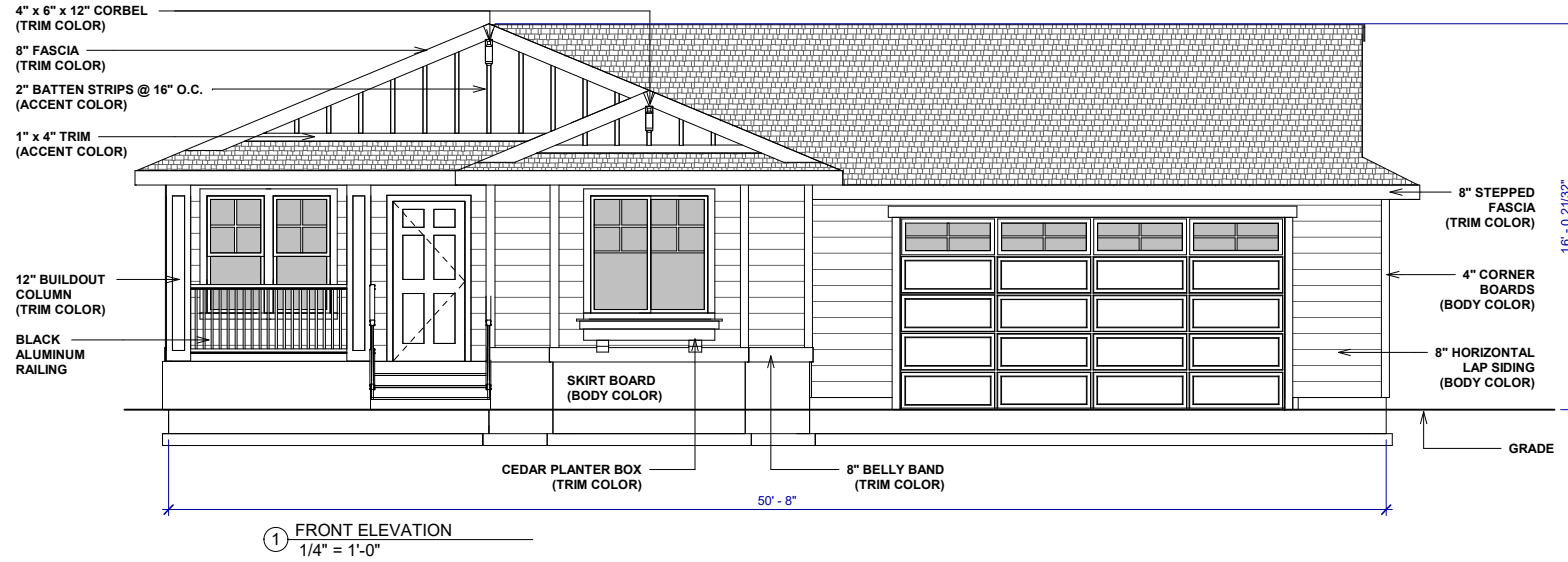




UNIT-B2 1580 S.F.
COLOR SCHEME #4

NOTE:

HOMES SHOWN REPRESENT THE DEVELOPMENT VISION, ACTUAL UNITS MAY VARY.
 GARAGE PLACEMENT WILL ACCOMODATE OFF-STREET PARKING ON DRIVEWAY.



UNIT-B2 1580 S.F.

- 8" HORIZONTAL LAP CEMENT BOARD (BODY COLOR)
- 2" BATTEN STRIPS ON NO GROOVE PANELS w/ 4" BOTTOM TRIM (ACCENT COLOR)
- 4" TRIM AT CORNERS (BODY COLOR)
- VINYL WINDOWS (WHITE)
- 3-1/2" WINDOW TRIM (TRIM COLOR)
- 8" ROOF FASCIA (TRIM COLOR)
- 4" x 6" x 12" CORBELS (TRIM COLOR)
- CEDAR PLANTER BOX (TRIM COLOR)
- ROOF MATERIAL COMPOSITE SHINGLES. PITCH PER PLAN
- 12" x 12" BUILD OUT COLUMN (TRIM COLOR)
- BLACK ALUMINUM RAILING
- GARAGE DOOR WITH WINDOWS (BODY COLOR)
- 8" BELLY BAND TRANSITION TO SKIRTING (TRIM COLOR)
- SKIRT BOARD (BODY COLOR)

NOTE:
 HOMES SHOWN REPRESENT THE DEVELOPMENT VISION, ACTUAL UNITS MAY VARY.
 GARAGE PLACEMENT WILL ACCOMODATE OFF-STREET PARKING ON DRIVEWAY.