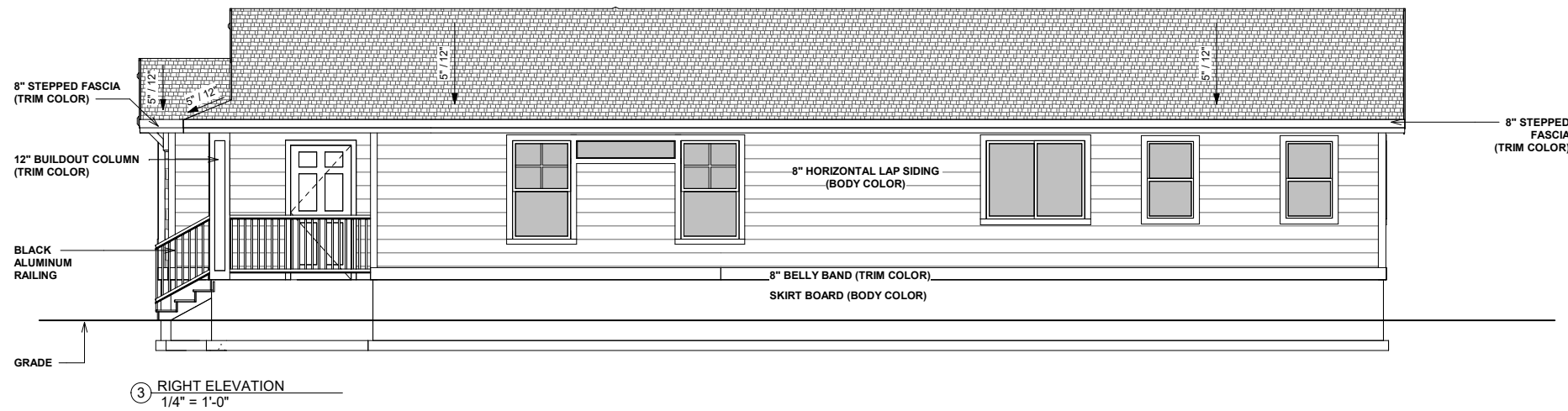
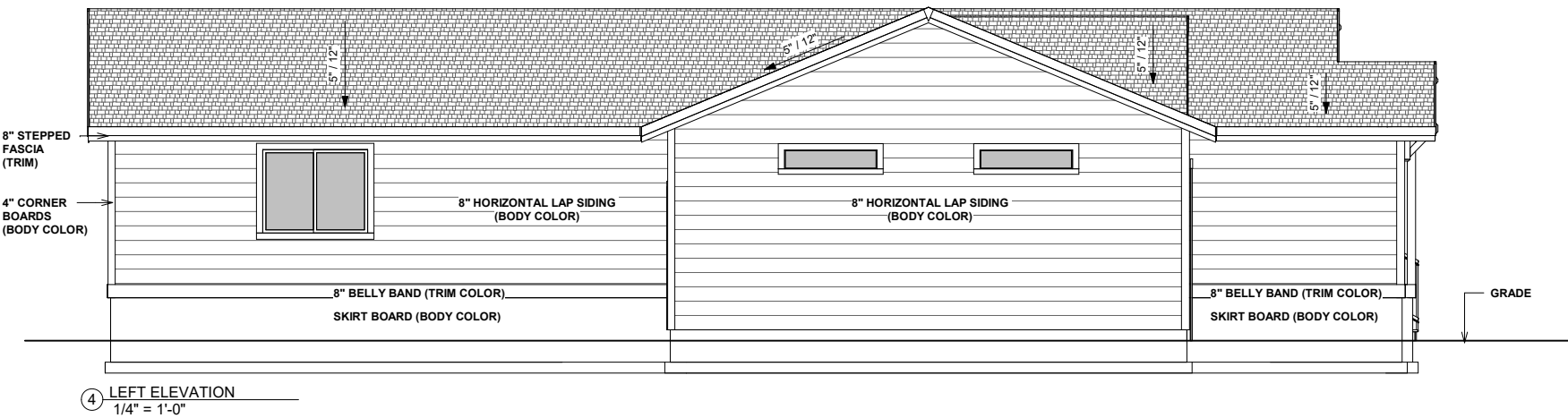
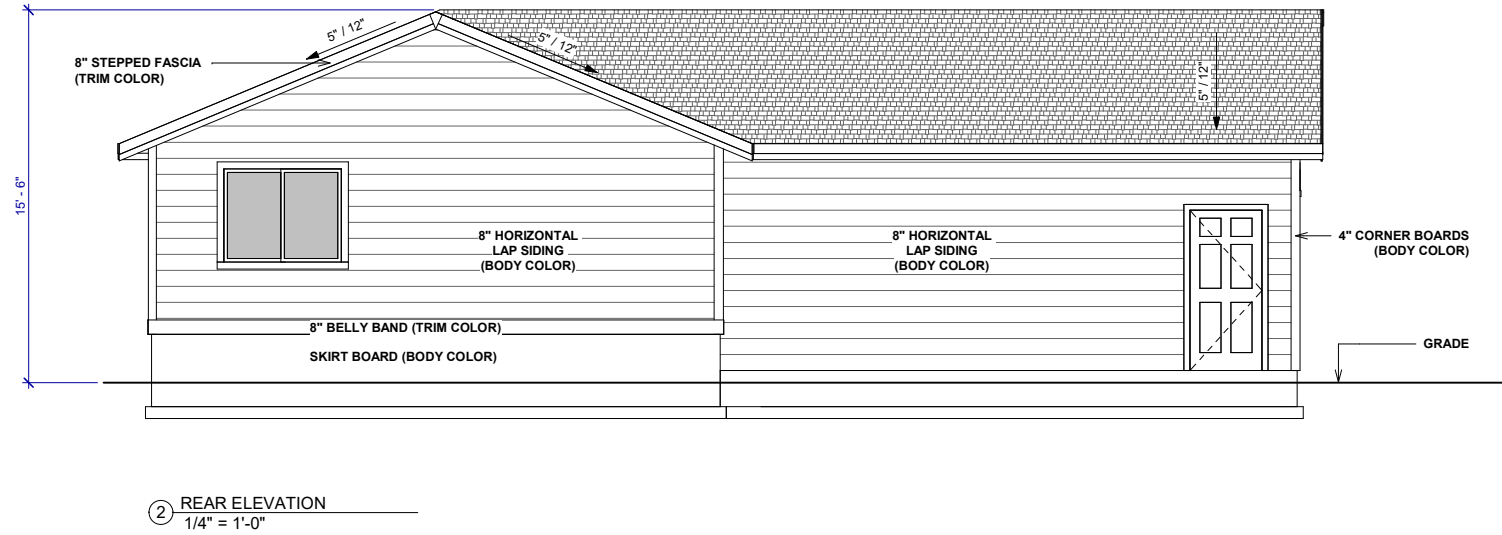
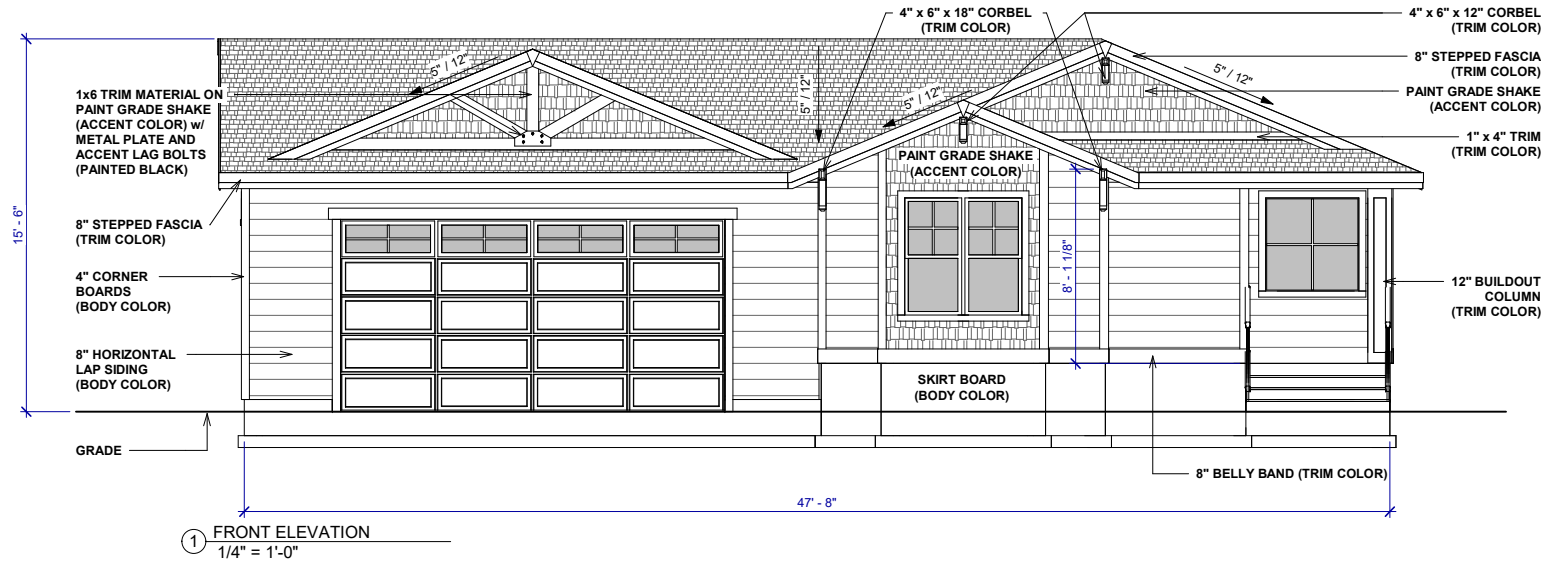




UNIT-B1 1336 S.F.
COLOR SCHEME #3

NOTE:

HOMES SHOWN REPRESENT THE DEVELOPMENT VISION, ACTUAL UNITS MAY VARY.
 GARAGE PLACEMENT WILL ACCOMODATE OFF-STREET PARKING ON DRIVEWAY.



UNIT-B1 1336 S.F.

- 8" HORIZONTAL LAP CEMENT BOARD (BODY COLOR)
- PAINT GRADE SHAKE SIDING (ACCENT COLOR)
- 4" TRIM AT CORNERS (BODY COLOR)
- VINYL WINDOWS (WHITE)
- 3-1/2" WINDOW TRIM (TRIM COLOR)
- 8" ROOF FASCIA w/ 6" STEPPED FASCIA (TRIM COLOR)
- 4" x 6" x 12" CORBELS (TRIM COLOR)
- 4" x 6" x 18" CORBELS (TRIM COLOR)
- 1" x 6" TRIM BOARD ON PAINT GRADE SHAKES (ACCENT COLOR) w/ METAL PLATE AND ACCENT LAG BOLTS (PAINTED BLACK)
- ROOF MATERIAL COMPOSITE SHINGLES. PITCH PER PLAN
- 12" x 12" BUILD OUT COLUMN (TRIM COLOR)
- BLACK ALUMINUM RAILING
- GARAGE DOOR WITH WINDOWS (BODY COLOR)
- 8" BELLY BAND TRIM TRANSITION TO SKIRTING (TRIM COLOR)
- SKIRT BOARD (BODY COLOR)

NOTE:

HOMES SHOWN REPRESENT THE DEVELOPMENT VISION, ACTUAL UNITS MAY VARY. GARAGE PLACEMENT WILL ACCOMODATE OFF-STREET PARKING ON DRIVEWAY.