

ADAMS STREET

JEFFERSON ST

MADISON ST

MONROE STREET

SITE DATA

CITY OF SPOKANE PLANTING REQUIREMENTS
146 REQUIRED 2" CAL. TREES

PLANTING PROPOSAL
137 PROPOSED 2" CAL. TREES
235 2 GAL. SHRUBS
126 3 GAL. SHRUBS

USING CITY OF SPOKANE VALLEY POINT SYSTEM

CITY OF SPOKANE
146 2" CAL. TREES = 1752 POINTS

PLANTING PROPOSAL
137 2" CAL. TREES = 1644 POINTS
235 2 GAL. SHRUBS = 235 POINTS
126 3 GAL. SHRUBS = 252 POINTS
8418 SF TURF = 532 (NO MORE THAN 25% OF TOTAL POINTS)

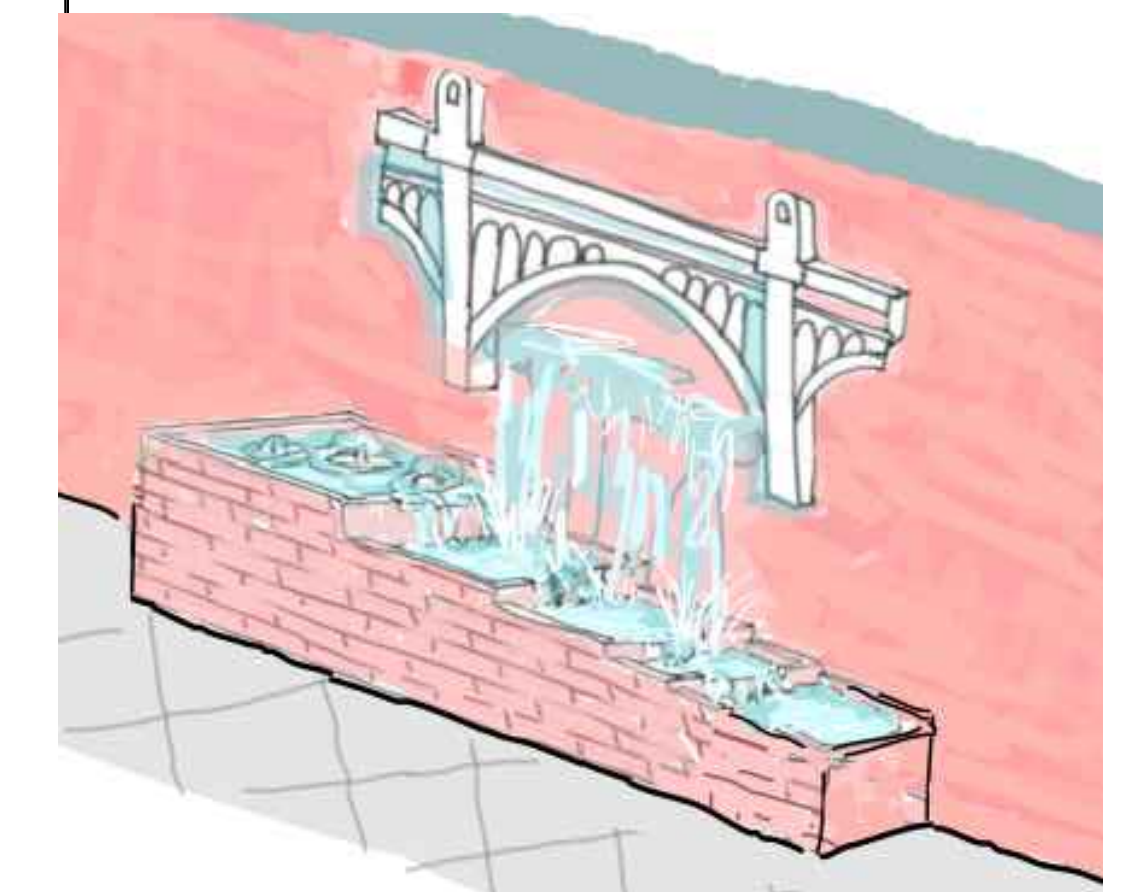
TOTAL = 2663 POINTS

CITY OF SPOKANE VALLEY POINT SYSTEM

2" CAL. TREES = 12 POINTS EACH
2 GAL. SHRUBS = 1 POINT EACH
3 GAL. SHRUBS = 2 POINTS EACH
1 SF OF TURF = .25 POINTS



AUTO DISTRICT MADALLION



BRICK WALL & WATER FEATURE



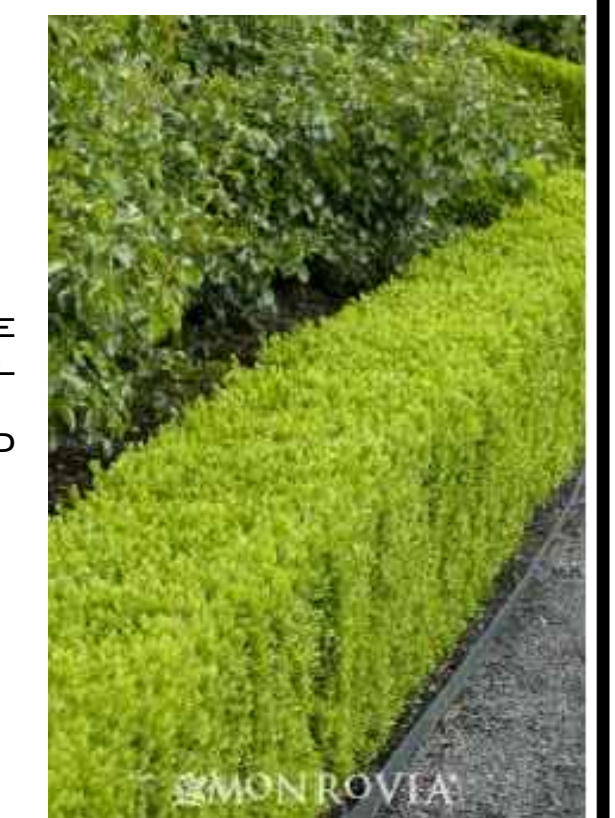
RAIN GARDEN PLANT MATERIAL



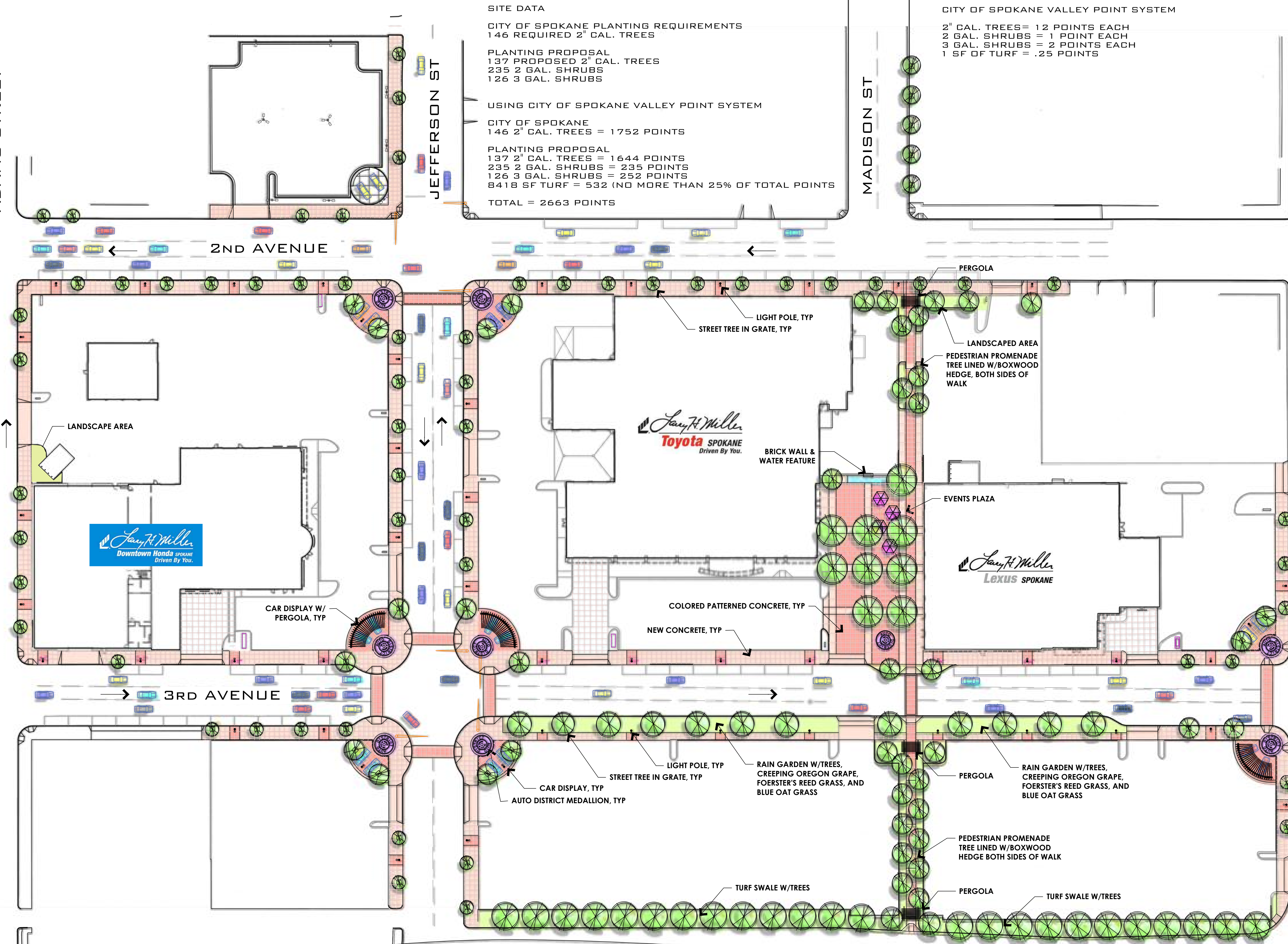
CREeping OREGON GRAPE
FOERSTER'S REED GRASS
BLUE OAT GRASS



PEDESTRIAN PROMENADE
PLANT MATERIAL



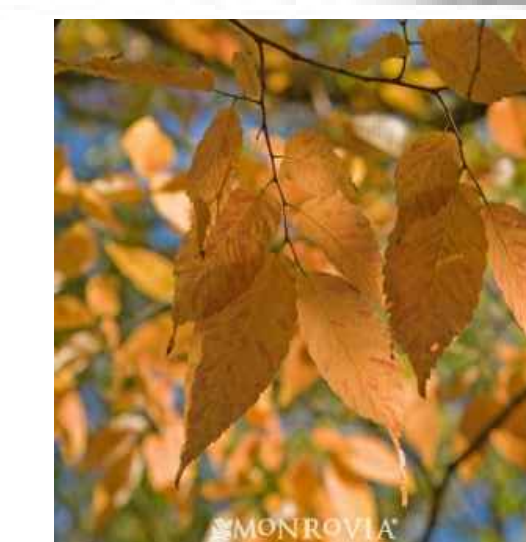
BOXWOOD



RAIN GARDEN W/TREES



PEDESTRIAN PROMENADE



STREET TREES
ZELKOVA
HORNBEAM
FLOWERING DRABAPPLE
TUPELO

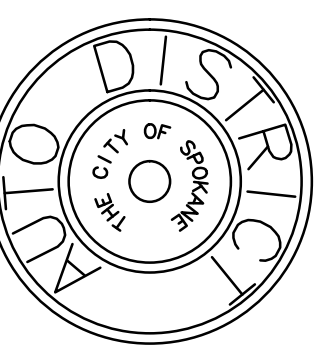
* ALL SHRUB AND TREE IMAGES ARE FROM THE MONROVIA WEB SITE



JOHN MAHONEY ARCHITECT
850 W. ELLIOT ROAD #108
TEMPE, ARIZONA 85284
P 480.345.8457 F 480.345.1759

IWCE

LARRY H. MILLER
DOWNTOWN AUTO DISTRICT MASTER PLAN
SPOKANE, WASHINGTON



PROJECT NO.: 1336
ISSUE DATE: 2/13/15

PLANTING PLAN

L100

PLANTING PLAN