

ELEVATIONS ARE TO NAVD88 DATUM

**LEGEND**

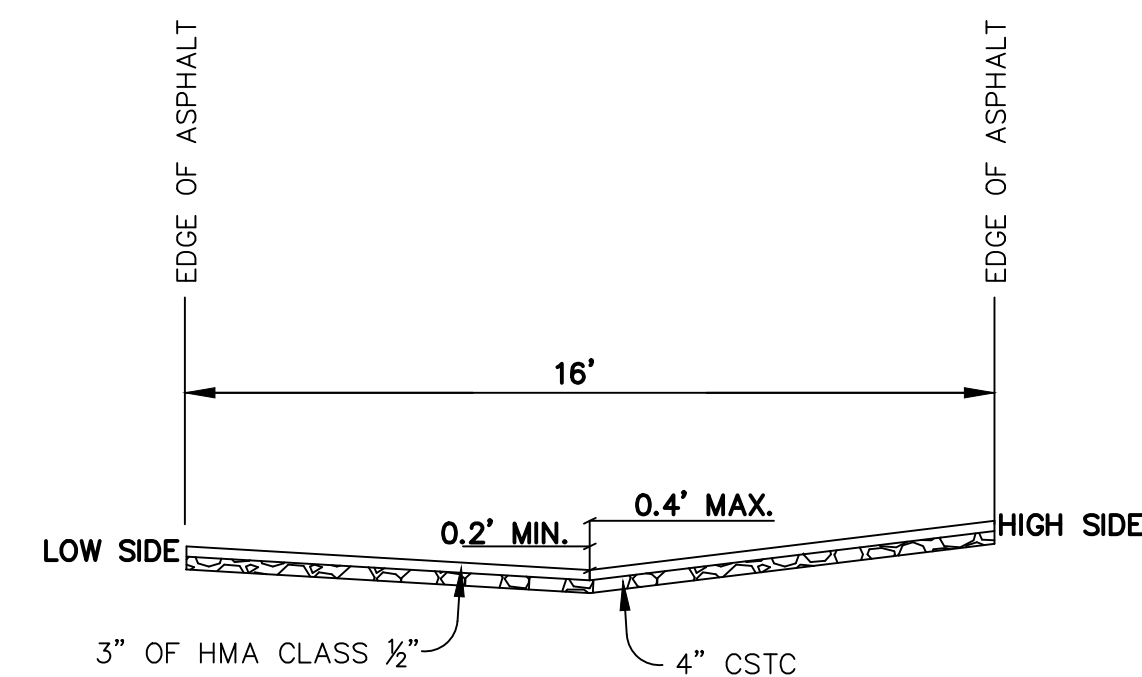
- P-O UTILITY POLE
- FH □ FIRE HYDRANT
- W M WATER VALVE
- MB □ MAILBOX
- SMH ○ SEWER MANHOLE
- CB □ CATCH BASIN
- MAG ▲ MAG NAIL
- - - FENCE
- - - UNDERGROUND WATER
- - - UNDERGROUND SEWER

**GENERAL NOTES:**

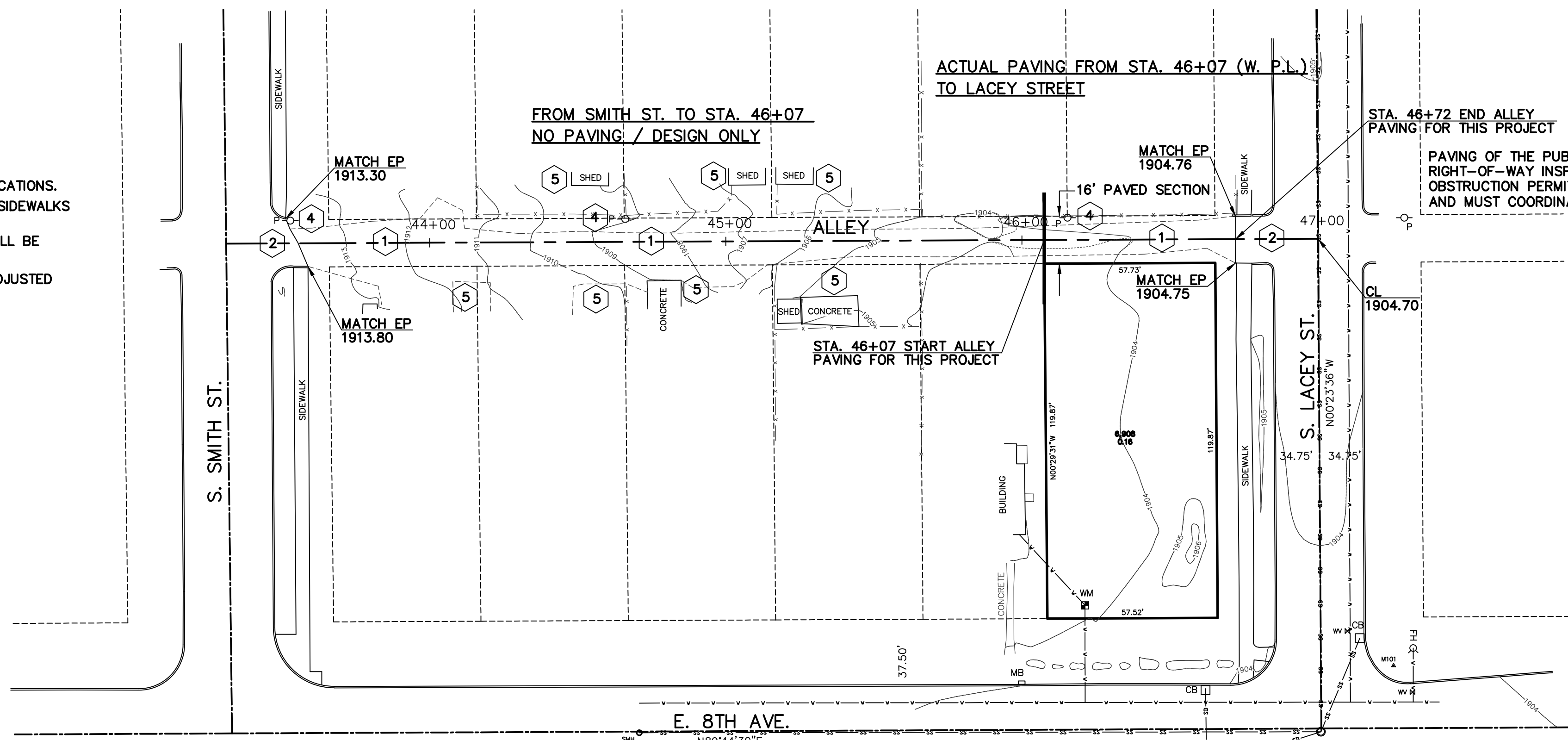
ALL METHODS AND MATERIALS SHALL COMPLY WITH THE LATEST EDITIONS OF THE UNIFORM BUILDING CODE; THE WASHINGTON STATE DEPARTMENT OF TRANSPORTATION'S STANDARD SPECIFICATIONS FOR ROAD BRIDGE AND MUNICIPAL CONSTRUCTION; THE CITY OF SPOKANE SUPPLEMENTAL SPECIFICATIONS; AWWA; APWA; AND ALL OTHER APPLICABLE LOCAL, STATE AND FEDERAL CODES, RULES, AND REGULATIONS.

**ALLEY PAVING NOTES:**

1. ALL PROVISIONS AND REQUIREMENTS PER CITY OF SPOKANE STANDARDS, PLANS AND SPECIFICATIONS.
2. PAVEMENT SUBGRADE SHALL BE PREPARED PER CITY OF SPOKANE STANDARDS AND SPECIFICATIONS.
3. CONTRACTOR SHALL FIELD VERIFY SLOPES OF ALL ACCESSIBLE ROUTES, CURB RAMP, AND SIDEWALKS PRIOR TO CONSTRUCTION AND NOTIFY DESIGN ENGINEER OF ANY CONFLICTS.
4. ALL BROKEN, HEAVED, OR SUNKEN SIDEWALK AND CURBS WITHIN CONSTRUCTION LIMITS, SHALL BE REPLACED OR REPAIRED.
5. ALL EXISTING UTILITY COVERS, LIDS AND GRATES WITHIN CONSTRUCTION LIMITS, SHALL BE ADJUSTED TO PROPOSED FINISH GRADES AND UPGRADED TO TRAFFIC RATED IF IN PAVEMENT AREAS.

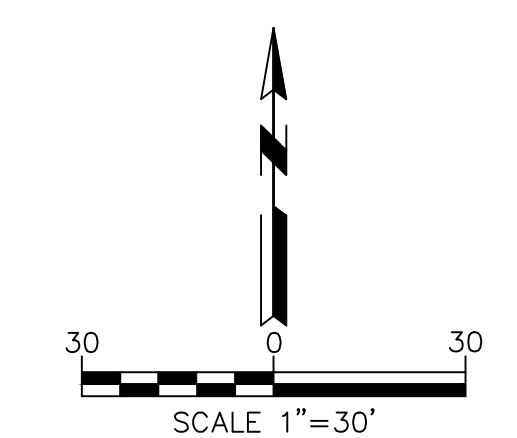


1 PAVED ALLEY TYPICAL SECTION  
NOT TO SCALE



**ALLEY PAVING PLAN KEY NOTES:**

- 1 16' PAVED ALLEY PER CITY STD DETAIL W-103 AND DETAIL 1.
- 2 ALLEY RETURN PER CITY STD DETAIL W-104.
- 3 ADJUST EXISTING STRUCTURE AS NEEDED TO MATCH NEW PAVEMENT. COORDINATE WITH UTILITIES.
- 4 PAVE AROUND EXISTING POWER POLES.
- 5 MATCH EXISTING ELEVATIONS AROUND EXISTING DRIVEWAYS/STRUCTURES.



**VERTICAL DATUM**

ELEVATIONS ARE BASED ON NAVD88 DATUM BASED ON A STATIC GPS SESSION COLLECTED BY LANDTEK LLC ON A 1/2" MAG NAIL NEAR THE INTERSECTION OF LACEY STREET & 8TH AVENUE. THE STATIC SESSION WAS PROCESSED USING NOAA OPUS WEBSITE.

M101 ▲ ELEVATION = 1904.15'

ALL SIDEWALKS, CURBS, AND DRIVEWAY APPROACHES ADJACENT TO THE PROPERTY WILL BE REVIEWED AT THE END OF THE PROJECT WHEN A CERTIFICATE OF OCCUPANCY IS REQUESTED. IF ANY ARE FOUND BROKEN, HEAVED, SUNKEN, OR MISSING, THEY MUST BE REPAIRED/REPLACED WHETHER THE DAMAGE WAS EXISTING OR CAUSED BY CONSTRUCTION. IF YOU WOULD LIKE A SIDEWALK INSPECTION PRIOR TO REQUESTING OCCUPANCY, PLEASE CONTACT THE CITY OF SPOKANE AT (509)625-6300 TO ARRANGE A SITE VISIT.

**UTILITIES NOTES**

1. SURFACE UTILITIES SHOWN ARE FROM VISIBLE EVIDENCE COLLECTED BY SURVEY ONLY. SUBSURFACE UTILITY LINES ARE NOT SHOWN. INVESTIGATION INTO RECORDS HELD BY UTILITY PURVEYORS HAS NOT BEEN PERFORMED. UTILITIES WERE NOT RECENTLY SURFACE-MARKED FOR LOCATION PRIOR TO SURVEY. PARTIAL UTILITY LINES ARE SHOWN AS SURVEYED.
2. SEWER AND WATER LOCATIONS ARE SHOWN FROM VISIBLE EVIDENCE & CITY GIS DATA. LANDTEK DOES NOT CERTIFY THE POSITIONS OF WATER AND SEWER SYSTEMS. WE DO CERTIFY THAT ALL CARE WAS TAKEN TO SHOW THESE UTILITIES AS ACCURATELY AS POSSIBLE WITH THE PROVIDED DATA.

CALL BEFORE YOU DIG: 811

NAV88 = USED LOW ELEV. (113.13) AS OF JANUARY, 2000 USE NORTH AMERICAN VERTICAL DATUM OF 1988 (NAV88)

NAV88 ELEV.	BAR IS ONE INCH ON ORIGINAL DRAWING	HORIZONTAL SCALE 1" = 30'	VERTICAL SCALE 1" = 10'
CSM NO.	IF NOT ONE INCH ON THIS SHEET, ADJUST SCALES ACCORDINGLY	SCALE	SCALE

CITY OF SPOKANE, WASHINGTON  
DEPARTMENT OF ENGINEERING SERVICES  
808 WEST SPOKANE FALLS BLVD.  
SPOKANE, WASHINGTON 99201-3343  
(509) 625-6300



FEB. 15, 2026

PROJECT NAME:	2629 E 8TH SHORT PLAT	
SEGMENT LIMITS:	ALLEY SMITH TO LACEY	PUBLIC STREET
PROJECT LIMITS:	8TH AVE. TO 9TH AVE.	ALLEY (1)3 21-25-43

DATE	BY	PROJ.	DESCRIPTION	DATE	BY	PROJ.	DESCRIPTION
			AS BUILT				