

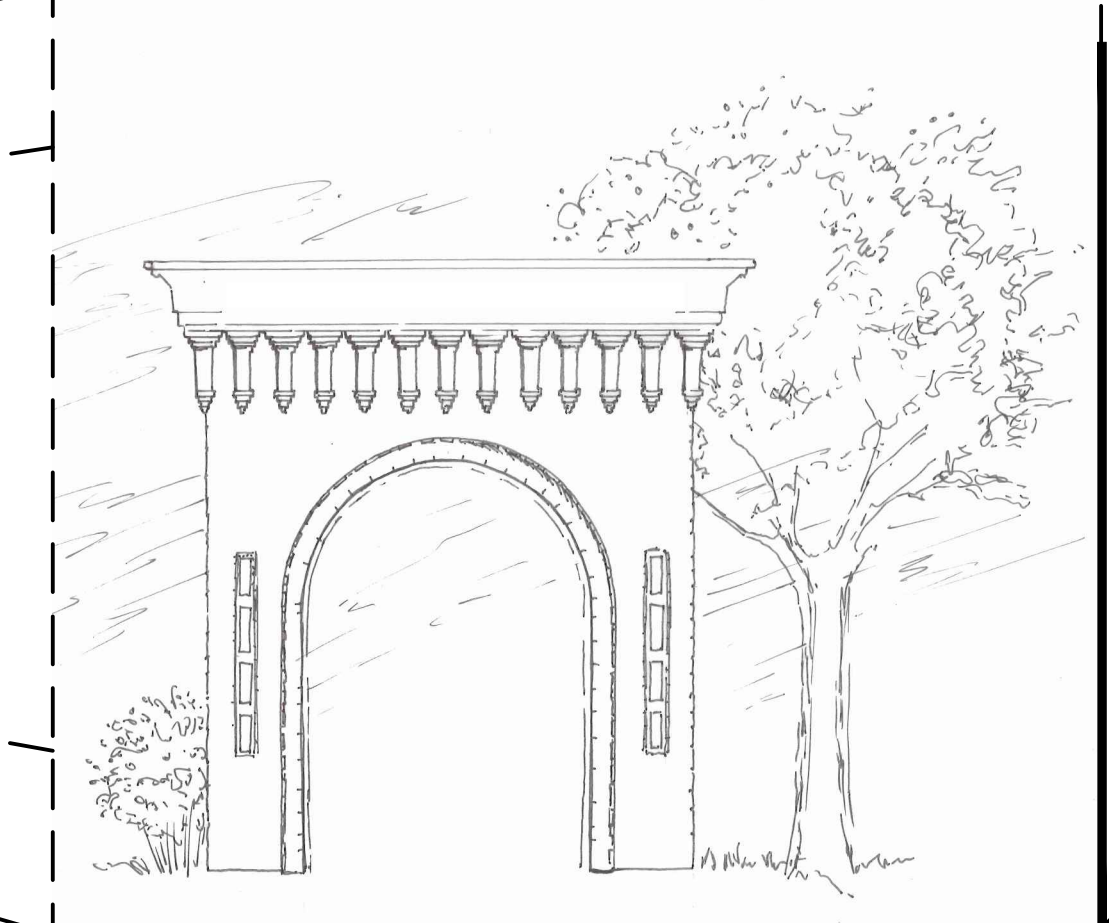
**LEGEND**

SYMBOL	DESCRIPTION	SYMBOL	DESCRIPTION
---	200' SETBACK	[Symbol]	NEW/POSSIBLE ROOF AND FAUX BASALT FINISH ON EXISTING BUILDING
---	PROPERTY LINE	[Symbol]	NEW/POSSIBLE FAUX BASALT FINISH
---	CONTOUR LINE (10' INTERVAL)	[Symbol]	NEW PART 8 SIGN
[Symbol]	EXISTING BUILDING	[Symbol]	NEW PEDESTRIAN GATE
[Symbol]	EXISTING POWERHOUSE	[Symbol]	NEW VEHICULAR GATE
[Symbol]	EXISTING GONDOLA COLUMN	[Symbol]	NEW PROJECT IDENTITY SIGN
[Symbol]	EXISTING ROCK OUTCROPPING	[Symbol]	*EXISTING EVERGREEN TREE
---	NEW WALL	[Symbol]	*NEW EVERGREEN TREE
---	NEW FENCE	[Symbol]	*EXISTING DECIDUOUS TREE
---	NEW PERMEABLE WALKWAY	[Symbol]	*NEW DECIDUOUS TREE
---	NEW CONCRETE SIDEWALK	[Symbol]	*NEW SHRUBBERY
---	NEW DECORATIVE SIDEWALK	[Symbol]	* NOTE: SEE PRELIMINARY PLANTING PLAN FOR PLANTING INTENT.
---	NEW STEPS/RISERS		
---	NEW GATEWAY		
---	NEW MOWCURB/EDGE OF SIDEWALK		
[Symbol]	NEW SITE FURNISHINGS		
[Symbol]	NEW RAISED PLANTER(S)		
[Symbol]	NEW BOLARD(S)		

**NOTES**

- HUNTINGTON PARK IS LEGALLY LOCATED AT S.18, T.25N, R.43E, W.M., WITHIN THE CITY OF SPOKANE, WA.
- 3.8 ACRE (LESS EXISTING AREAS TO REMAIN) ACCESS AND ENHANCEMENT WITH TRANSPORTATION & RECREATIONAL USES, AND ROUTINE MAINTENANCE ACTIVITIES OF LOW INTENSITY ARE PROGRAMMED.
- SEE PRELIMINARY PLANTING PLAN FOR PLANTING THEMES IN VARIOUS AREAS.

**GATEWAY CONCEPT-CITY PLAZA**

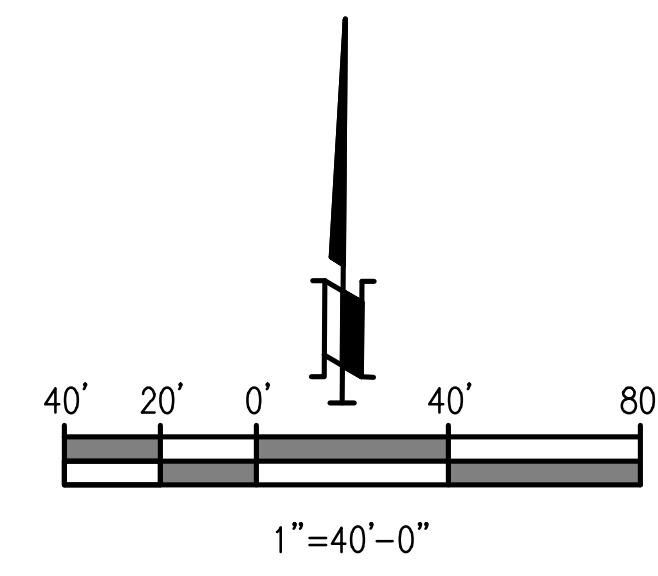


**GATEWAY CONCEPT-SPOKANE FALLS BLVD.**



STATE OF WASHINGTON  
REGISTERED  
LANDSCAPE ARCHITECT  
*Berry Stanley Ellison*  
BERRY STANLEY ELLISON  
CERTIFICATE NO. 1148

<b>MONROE STREET HED HUNTINGTON PARK</b>			
<b>CITY OF SPOKANE CONCEPT PLAN</b>			
AVISTA CORPORATION SPOKANE, WASHINGTON			
1"=40'-0"	04-03-13	APPROVED	
SCALE	DATE		
DESIGN DJN	CHECKED	DATE	
DRAWN BSE	NOTED	MFG. DWG. NO.:	
CHECKED CV	NOTED		
DWG. NO.: 204Exx-01-03			



4/2/2013 11:19 AM HUNTINGTON DESIGN REVIEW DOC.dwg