

High Drive – 29th Ave. to Hatch Rd



High Drive – 29th Ave. to Hatch Rd.



Project Goals

- “Signature Status”
- Complete a gap in the bicycle network
- Pedestrian safety
- High Drive Park Trail parking
- Reduce combined sewer overflows to the Spokane River
- Pavement replacement
- Water main replacement

High Drive Integrated Design

- Addresses all infrastructure needs with one project
- Neighborhood only inconvenienced once
- Cost savings

High Drive Integrated Design

- Features included in this project
 - Combined sewage storage facilities
 - Storm water grass swales
 - New storm water pipe
 - Replacement water main
 - New Street
 - New Sidewalks and paths
 - New Bike lanes
 - Overlook parking areas

Combined Sewage Storage Facilities

- Include a vault and large diameter inline storage pipe.
- Store flows during storm events to reduce combined sewer flows to Latah Creek and the Spokane River.
- Storage facilities will be constructed at:
 - Browne St.
 - Lamonte St.
 - Hatch St.

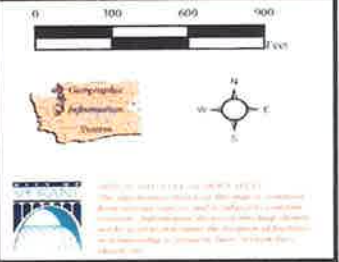


CSO 24 High Dr. Substorages

Printed by: bsfiger
Print date: 9/25/2013

Legend

- Browne Substorage 24-3
- Lamonte Substorage 24-4
- Hatch Substorage 24-6



Latah Creek Overflow






New Storm Water Systems

- Eliminates storm water flow into combined sewers.
- 29th Ave. to Manito Blvd. : New grass swales in the existing median.
- Manito Blvd. to Hatch Rd.: A new storm water pipe.

High Drive Storm Drainage Improvements

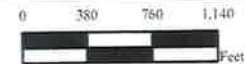
Printed by: rmcdermott
Print date: 8/20/2013

LEGEND

-  Existing Storm System
-  New Storm Routing
-  208 Swale & Drywells

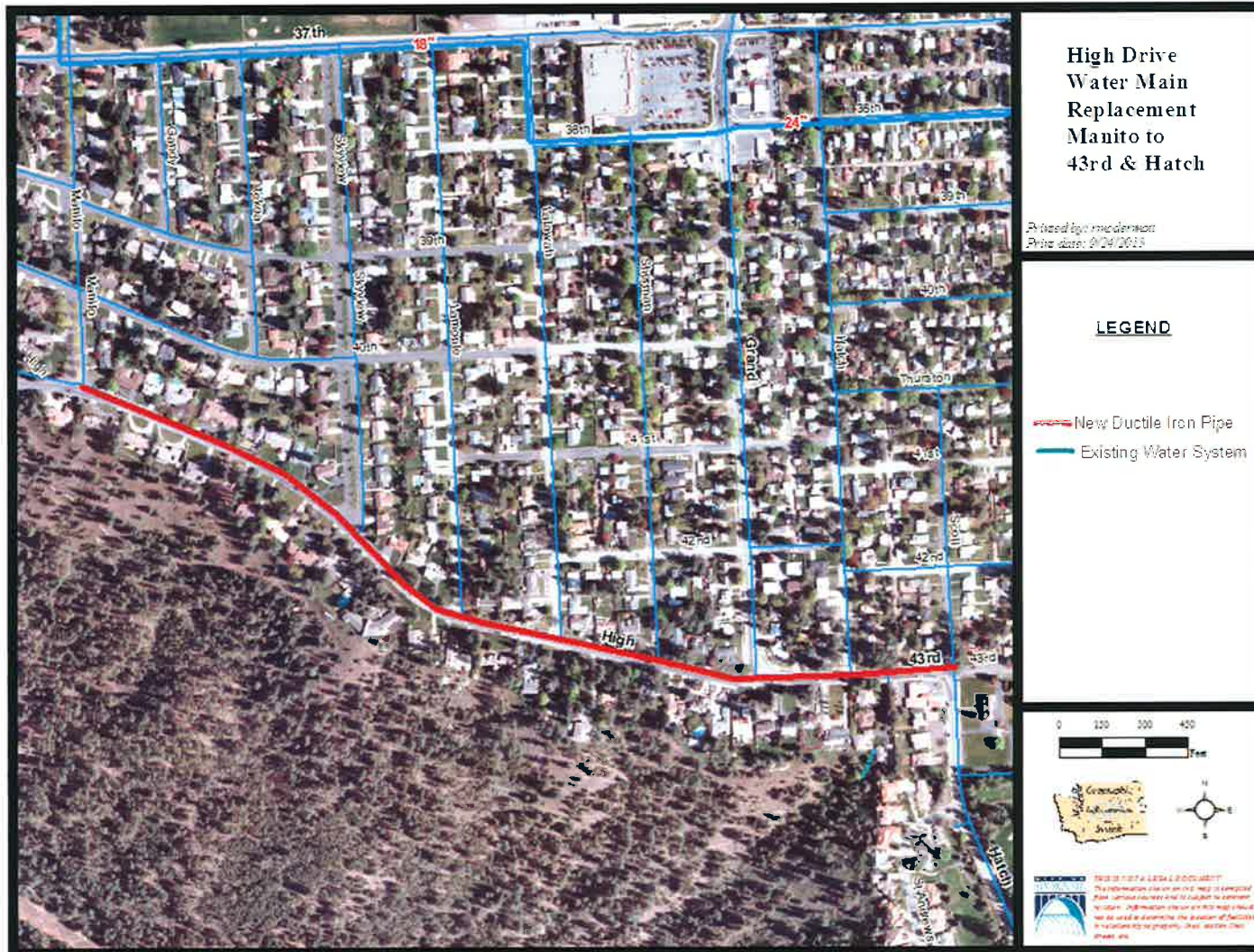
Swale sizes shall accomodate Design Storm, but care should be taken to retain the existing trees in the median, where possible.

The system of swales and drywells will be located on the North and East side of the road, which will be curb-crowned to accomodate this system.



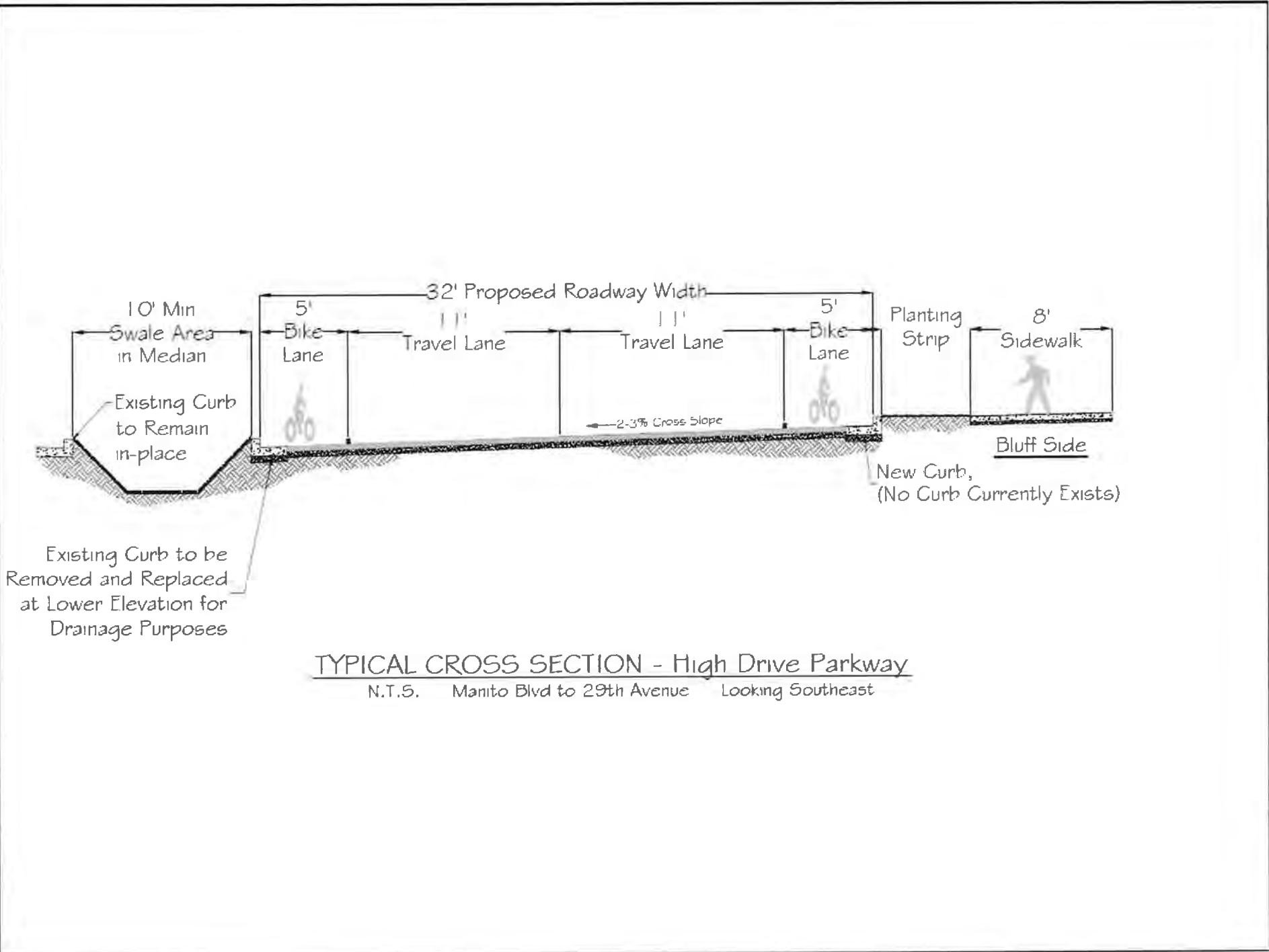
THIS IS NOT A LEGAL DOCUMENT
The information shown on this map is a computer-generated map and is not intended to be used as a legal document. The information shown on this map should not be used as a substitute for a professional survey or other legal document.

8-Inch Water Main Replacement Manito Blvd. to Hatch Rd.



Street Features

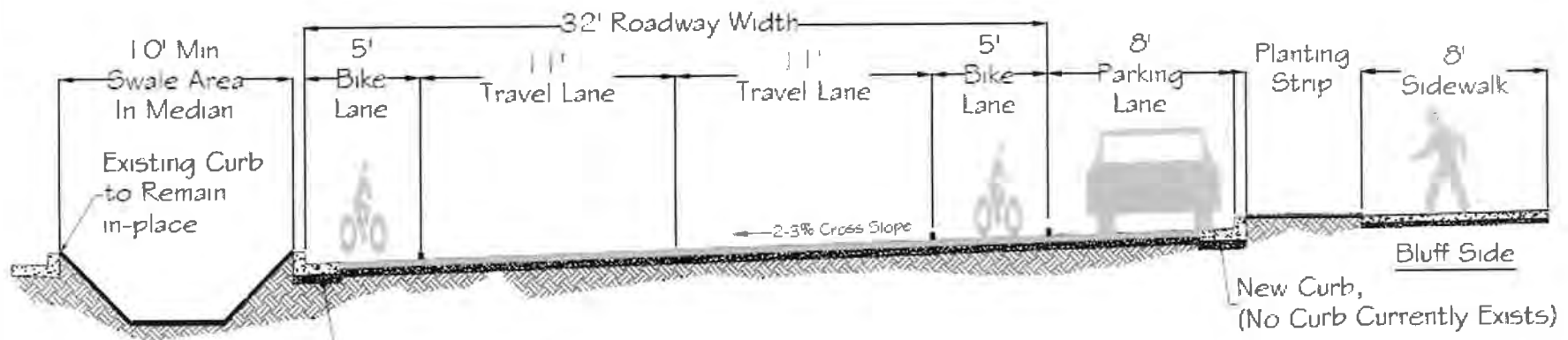
Segment #1 (29th Ave. to Manito
Blvd.)





Bluff Side Typical





Existing Curb to be Removed and Replaced at Lower Elevation for Drainage Purposes

TYPICAL CROSS SECTION - High Drive Parkway

N.T.S. Manito Blvd Near Bernard (Parking Pullout) Looking Southeast

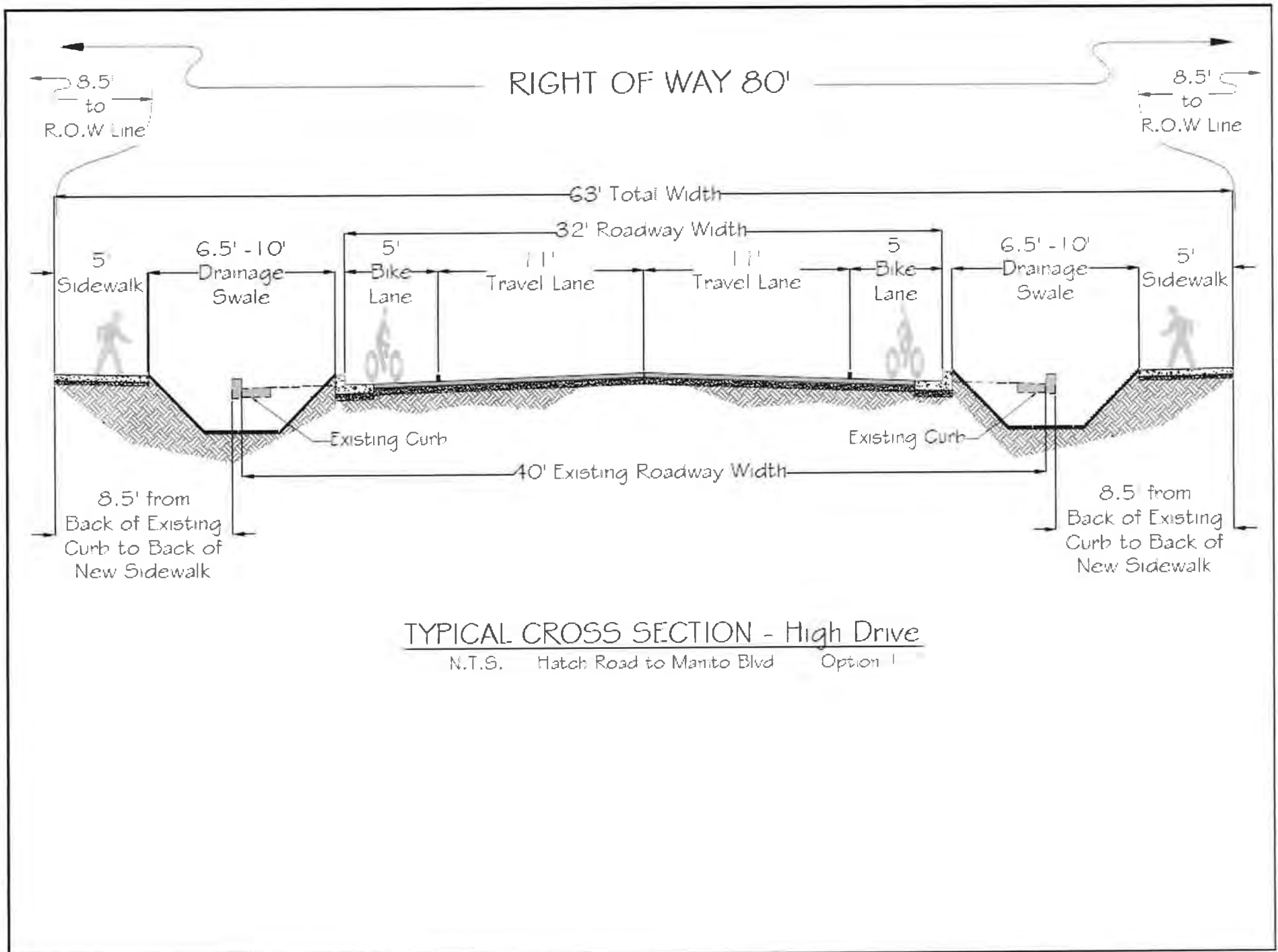


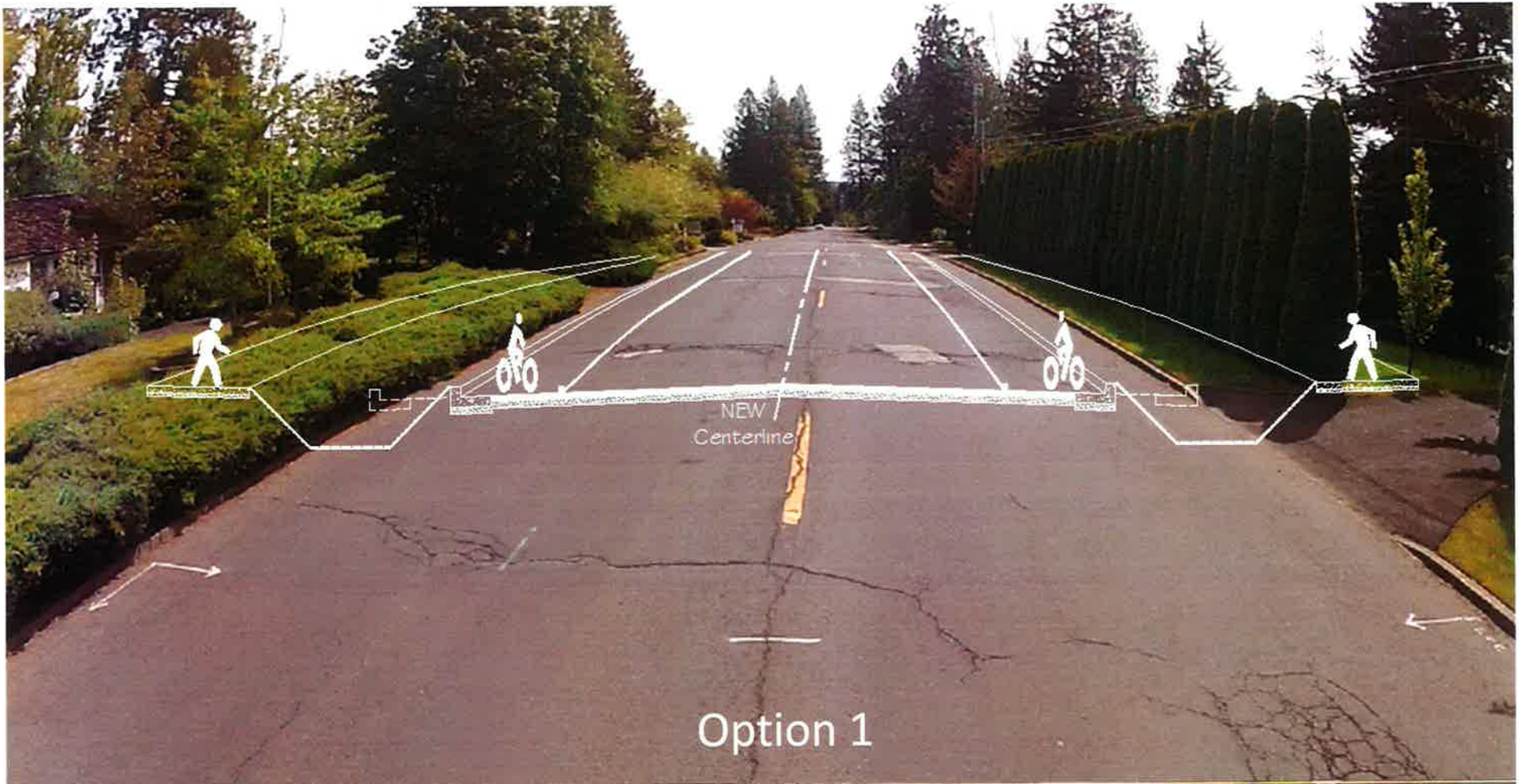
NEW
Centerline

Street Features

Segment #2 Options (Manito Blvd. to Grand Blvd.)

- Three options considered, as follows:





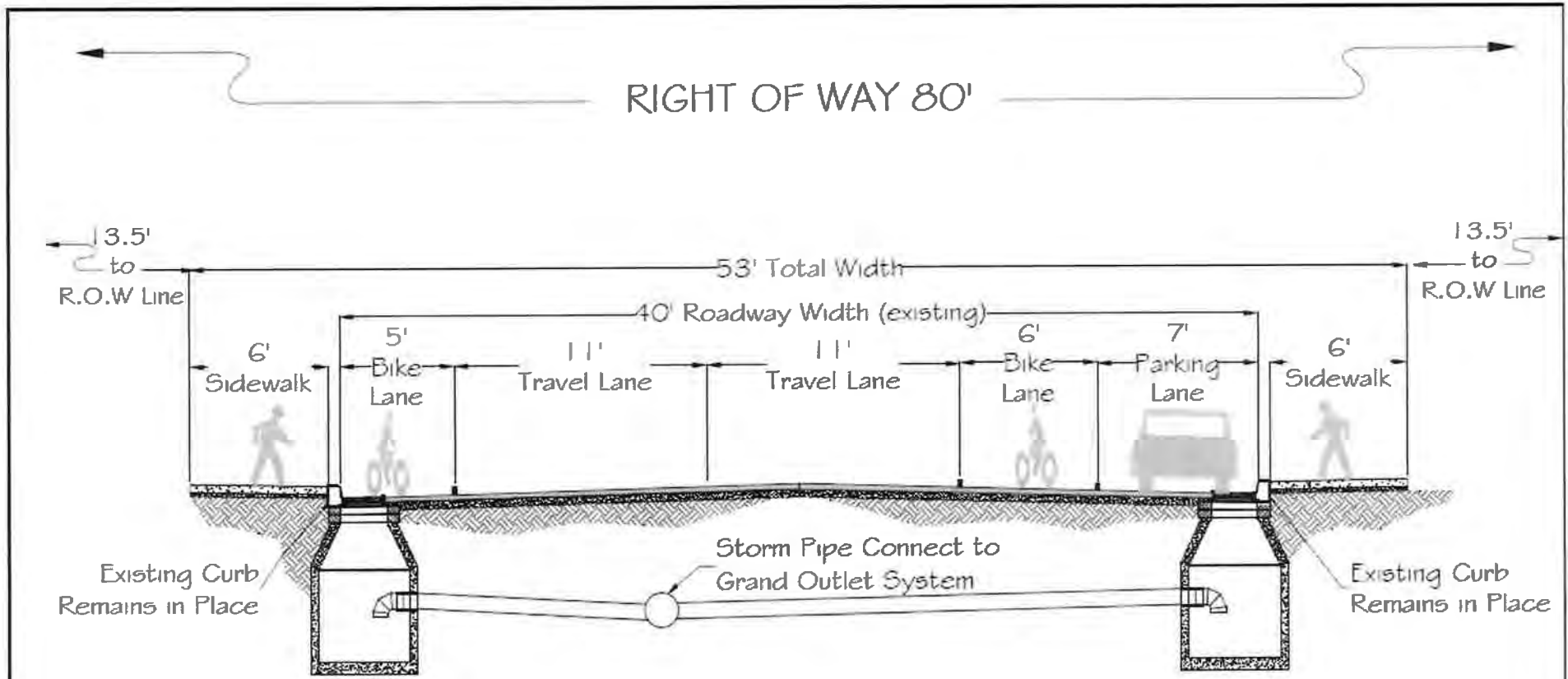
Option 1





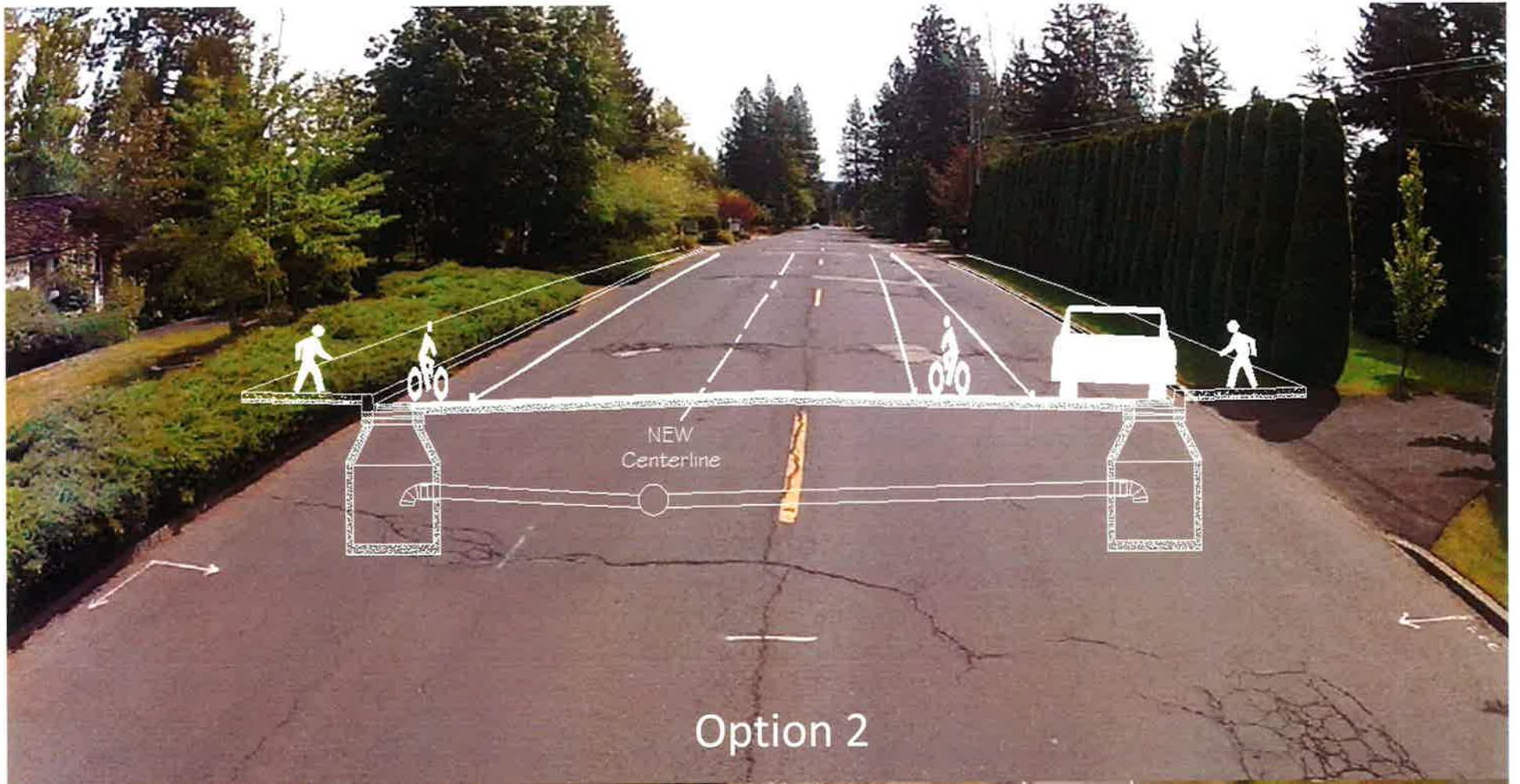
Option 1

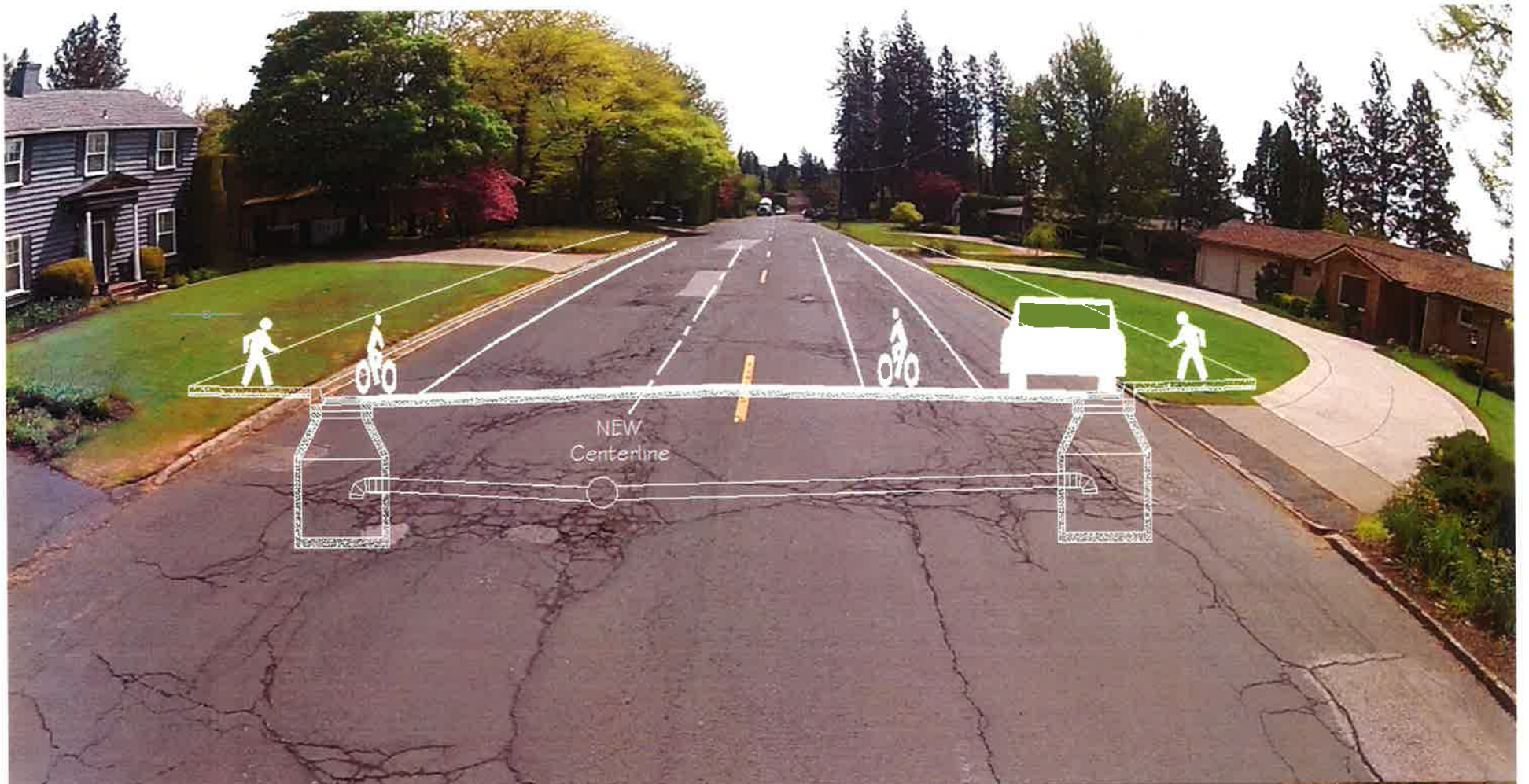


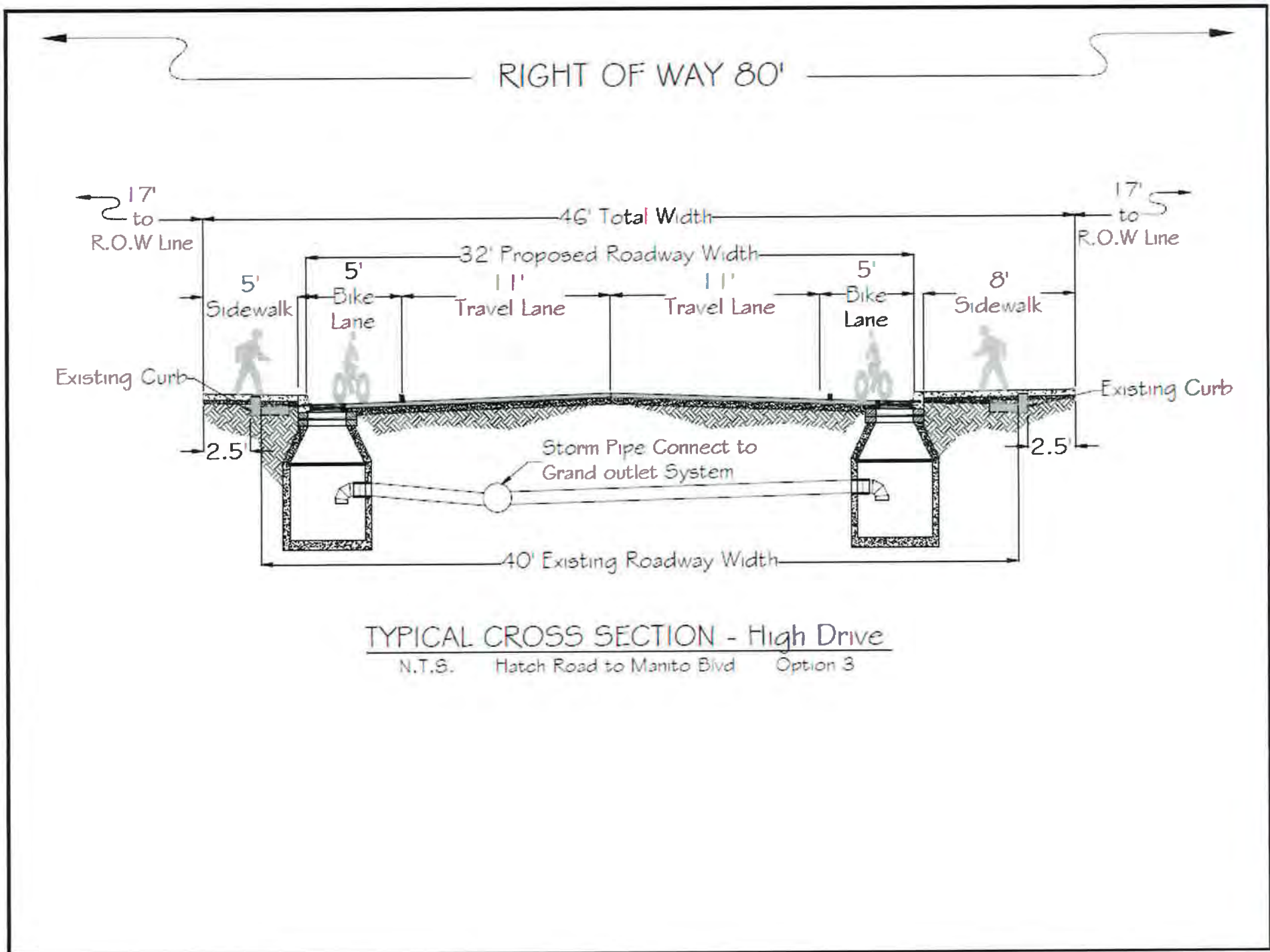


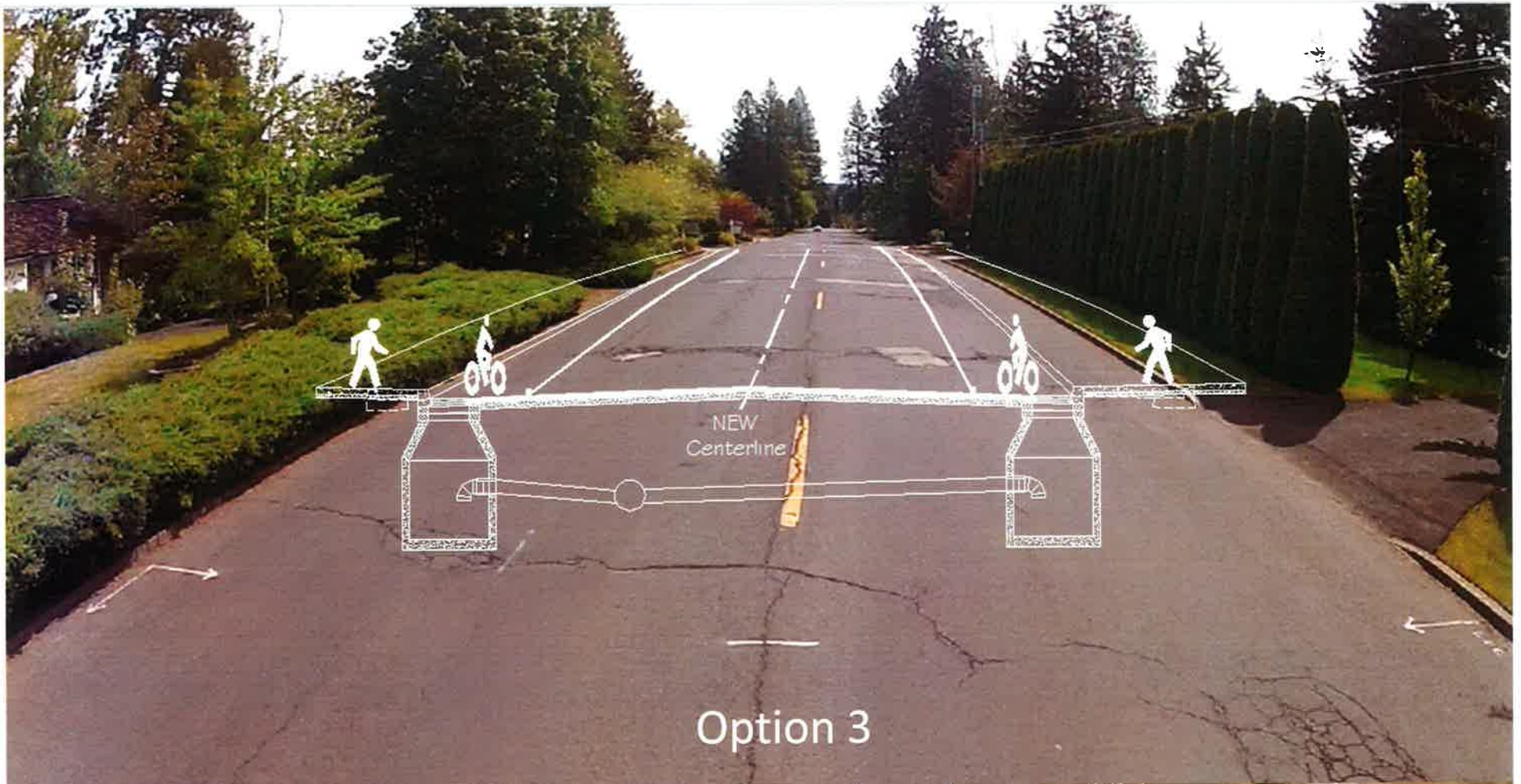
TYPICAL CROSS SECTION - High Drive

N.T.S. Hatch Road to Manito Blvd Option 2



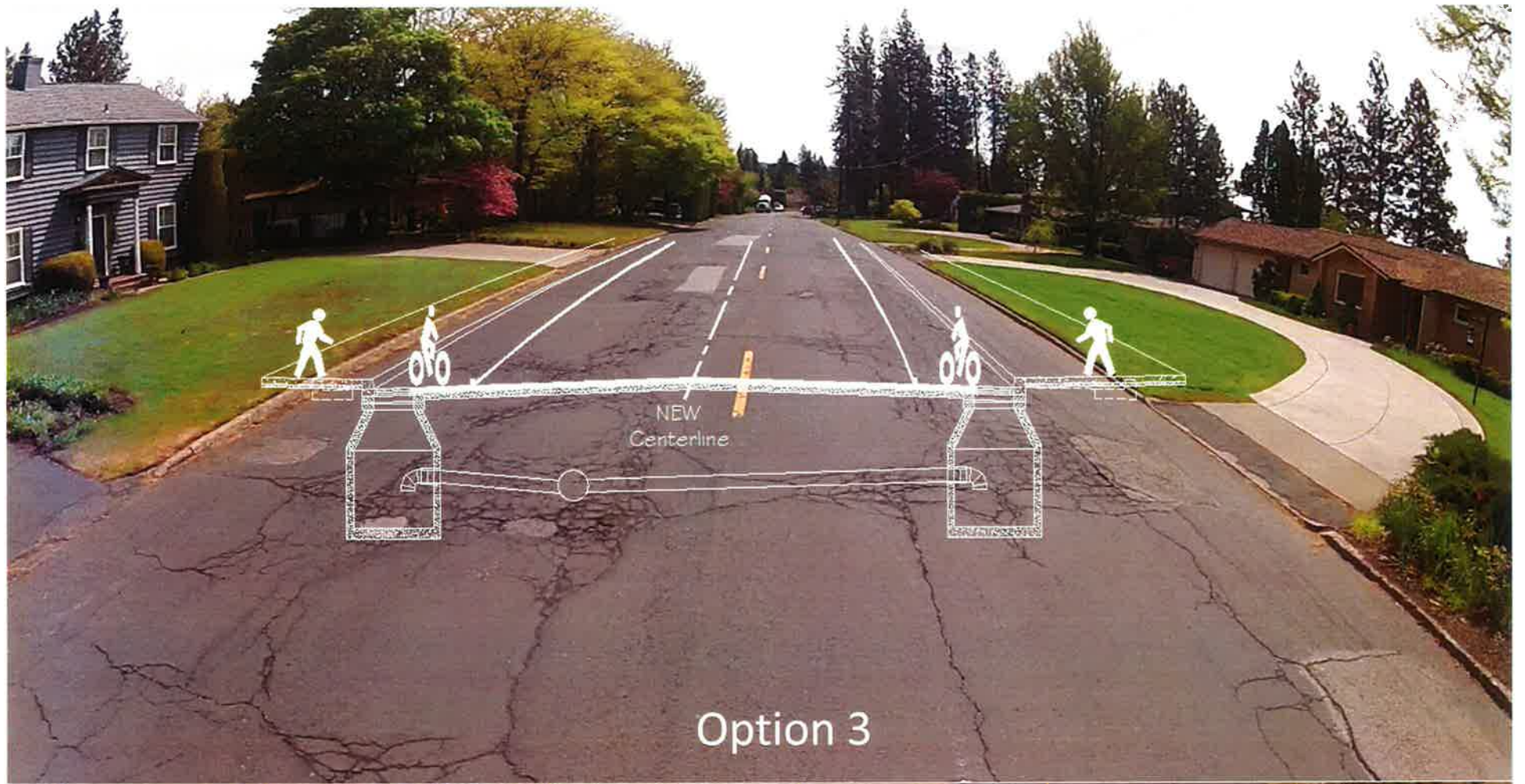






Option 3



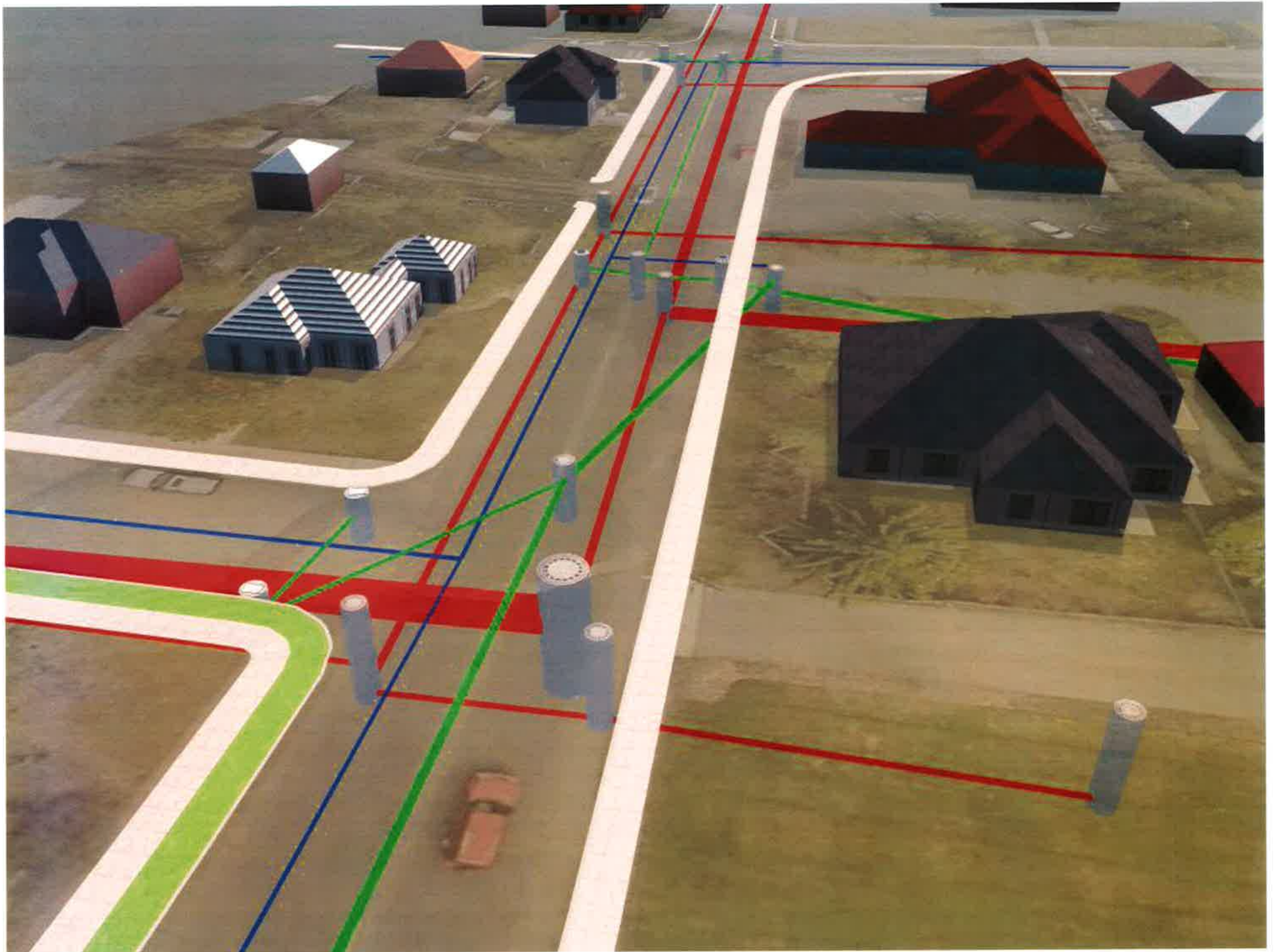


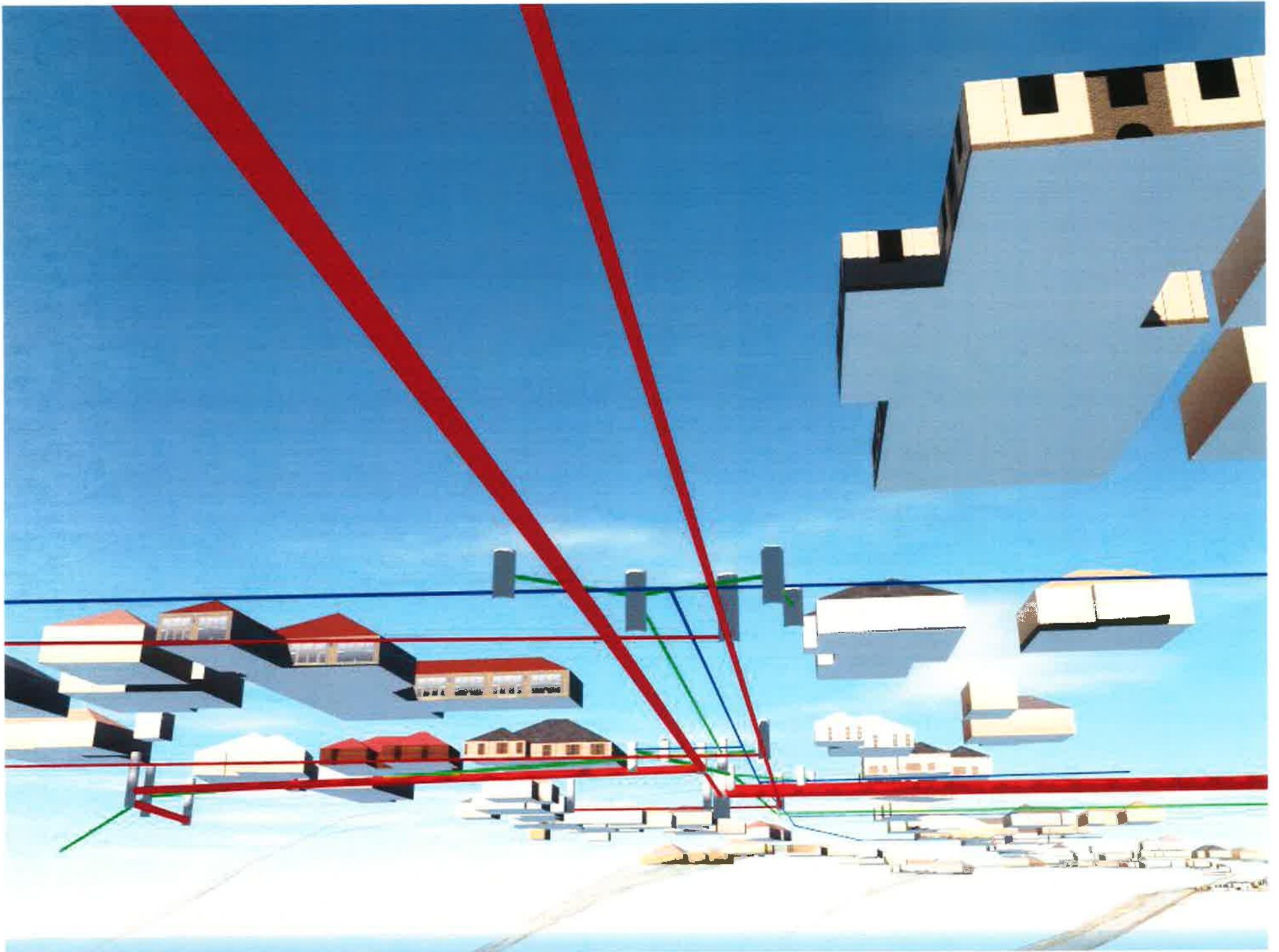
City selected option #3 because it supports integrated design goals with the least impact to the adjoining properties.



Project Schedule

- Advertise for construction bids in early Spring of 2014
- Construction start: Spring 2014
- Construction completion: Late Fall 2014





Discussion Tables

- Segment 1 Tables (29th Ave. to Manito Blvd.)
- Segment 2 Tables (Manito Blvd. to Hatch Rd.)
- Comment cards are available tonight or if you prefer you can email your comments to:

Julie Happy at

Highdriveproject@spokanecity.org