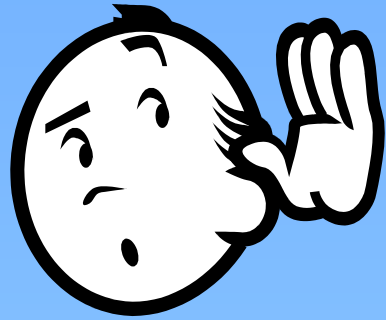


High Drive – 29th Ave. to Hatch Rd



Option 4

We listened

Project Goals

- “Signature Status”
- Complete a gap in the bicycle network
- Pedestrian safety
- High Drive Park Trail parking
- Reduce combined sewer overflows
- Pavement replacement
- Water main replacement

High Drive Integrated Design

- Features included in this project
 - Combined sewage storage facilities
 - Storm water grass swales
 - New storm water pipe
 - Replacement water main
 - New Street
 - New Sidewalks and paths
 - New Bike lanes
 - Overlook parking areas

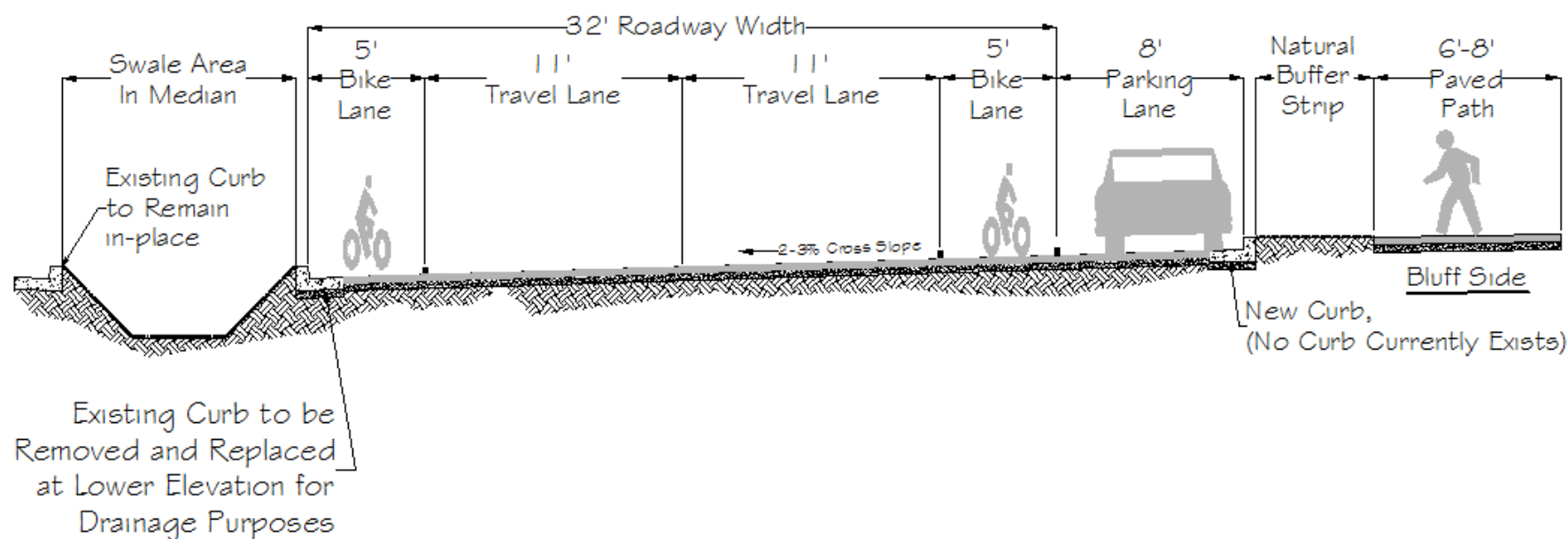
Communications



Option 4

Segment #1 (29th Ave. to Manito Blvd.)

- Maximizes amount of parking as topography allows
- Meandering paved path replaces sidewalk
- Bike lanes remain on both side of street



TYPICAL CROSS SECTION - High Drive Parkway

N.T.S.

29th Avenue to Manito Boulevard

Option 4

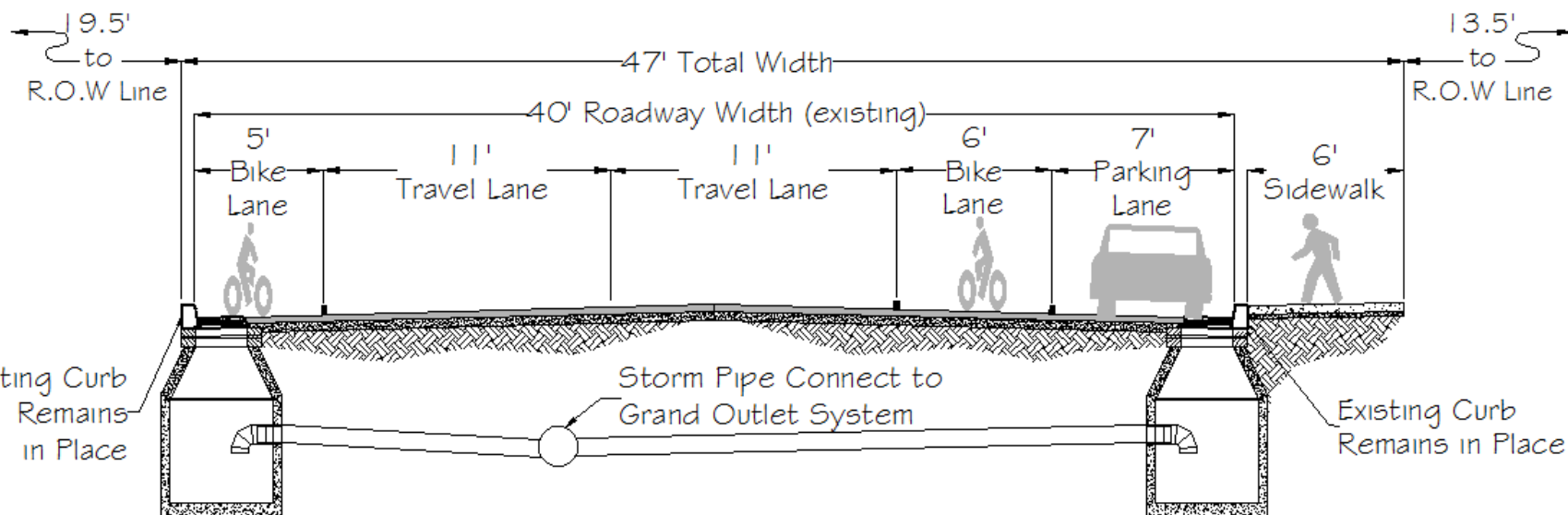


Option #4

Segment #2 (Manito Blvd. to Hatch Rd.)

- 6 foot sidewalk on bluff side only.
- Parking provided on the bluff side between Manito Blvd. and Skyview Dr.
- 4 foot planting strip on bluff side between Skyview Dr. and Grand Blvd.
- Bike lanes remain on both side of street

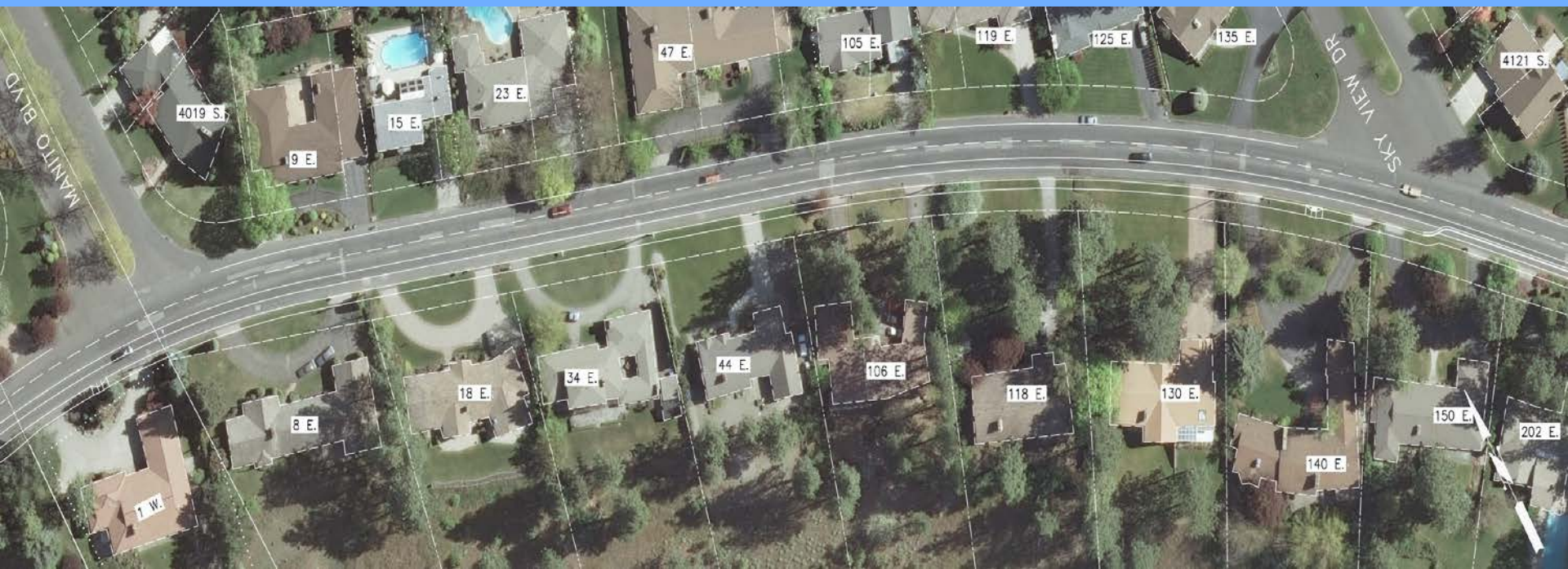
RIGHT OF WAY 80'



TYPICAL CROSS SECTION - High Drive

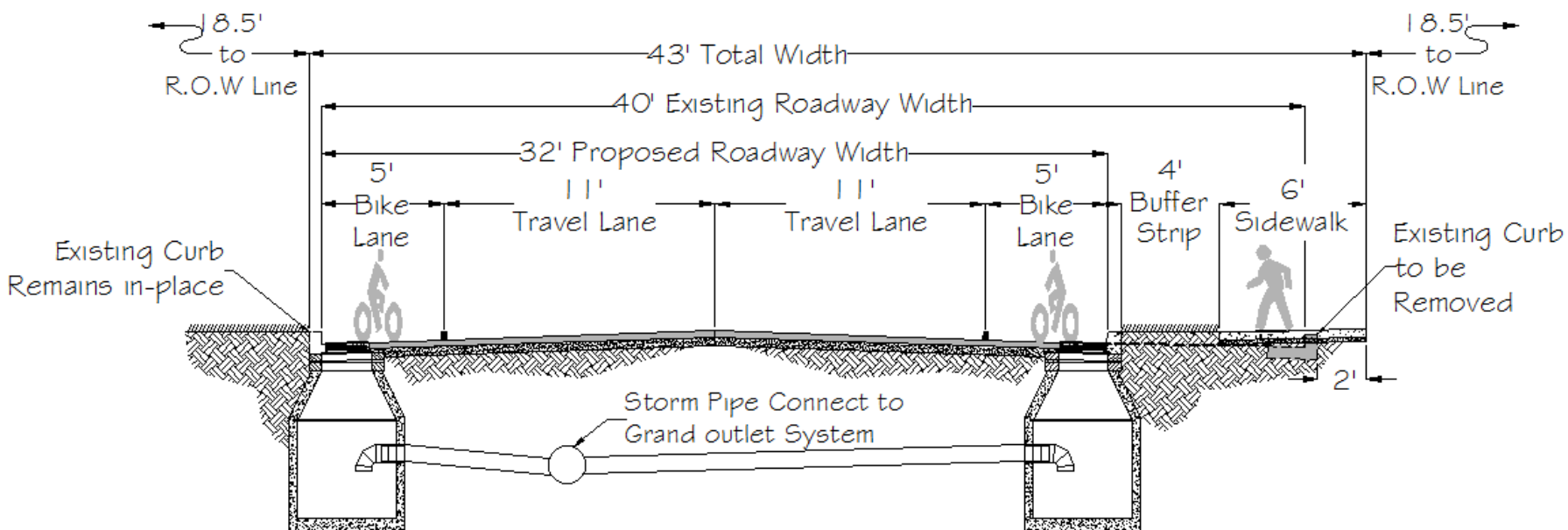
N.T.S. Manito Boulevard to Skyview Drive Option 4

Manito Blvd. to Skyview Dr.



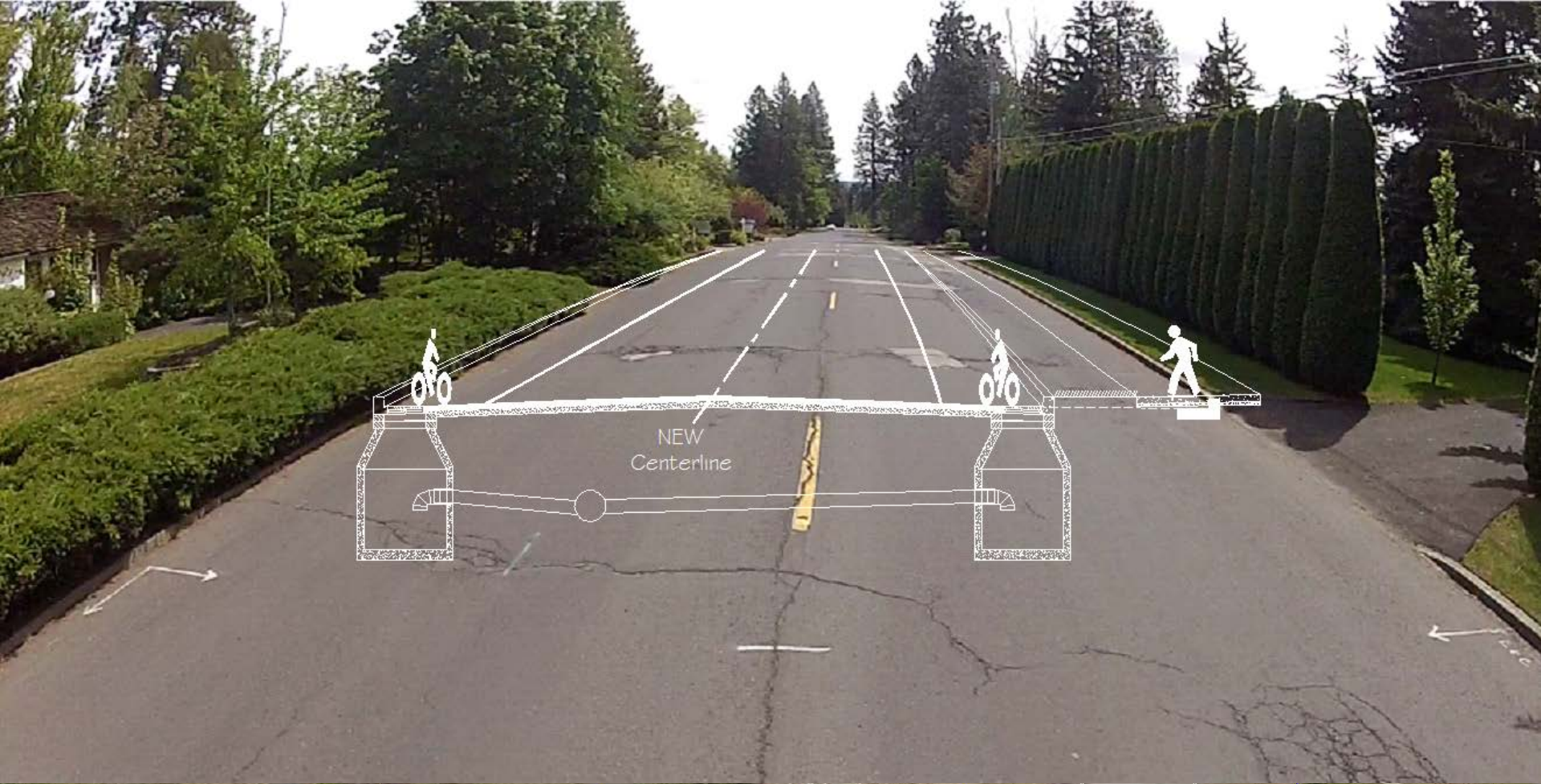


RIGHT OF WAY 80'



TYPICAL CROSS SECTION - High Drive

N.T.S. Skyview Drive to Grand Boulevard Option 4







Other questions you asked

- Bury Avista Lines ➡
- Trucks ➡
- Traffic Calming ➡
- Crosswalks ➡
- Roundabouts ➡

Our
Responses





Project Schedule

- Advertise for construction bids in Spring of 2014
- Construction start: Spring 2014
- Phased construction
- Construction completion: Summer 2015

Discussion Tables

- Segment 1 Tables (29th Ave. to Manito Blvd.)
- Segment 2 Tables (Manito Blvd. to Hatch Rd.)
- Comment cards are available tonight or if you prefer you can email your comments prior to November 21st to:

Julie Happy at

Highdriveproject@spokanecity.org

For updates throughout the project:

<http://beta.spokanecity.org/blog/2013/10/14/input-sought-on-high-drive-improvements/>